

Zeitschrift: Helvetia : magazine of the Swiss Society of New Zealand
Herausgeber: Swiss Society of New Zealand
Band: 67 (2001)
Heft: [6]

Artikel: Tradition supported with show of hands
Autor: Swiss Radio International
DOI: <https://doi.org/10.5169/seals-945136>

Nutzungsbedingungen

Die ETH-Bibliothek ist die Anbieterin der digitalisierten Zeitschriften auf E-Periodica. Sie besitzt keine Urheberrechte an den Zeitschriften und ist nicht verantwortlich für deren Inhalte. Die Rechte liegen in der Regel bei den Herausgebern beziehungsweise den externen Rechteinhabern. Das Veröffentlichen von Bildern in Print- und Online-Publikationen sowie auf Social Media-Kanälen oder Webseiten ist nur mit vorheriger Genehmigung der Rechteinhaber erlaubt. [Mehr erfahren](#)

Conditions d'utilisation

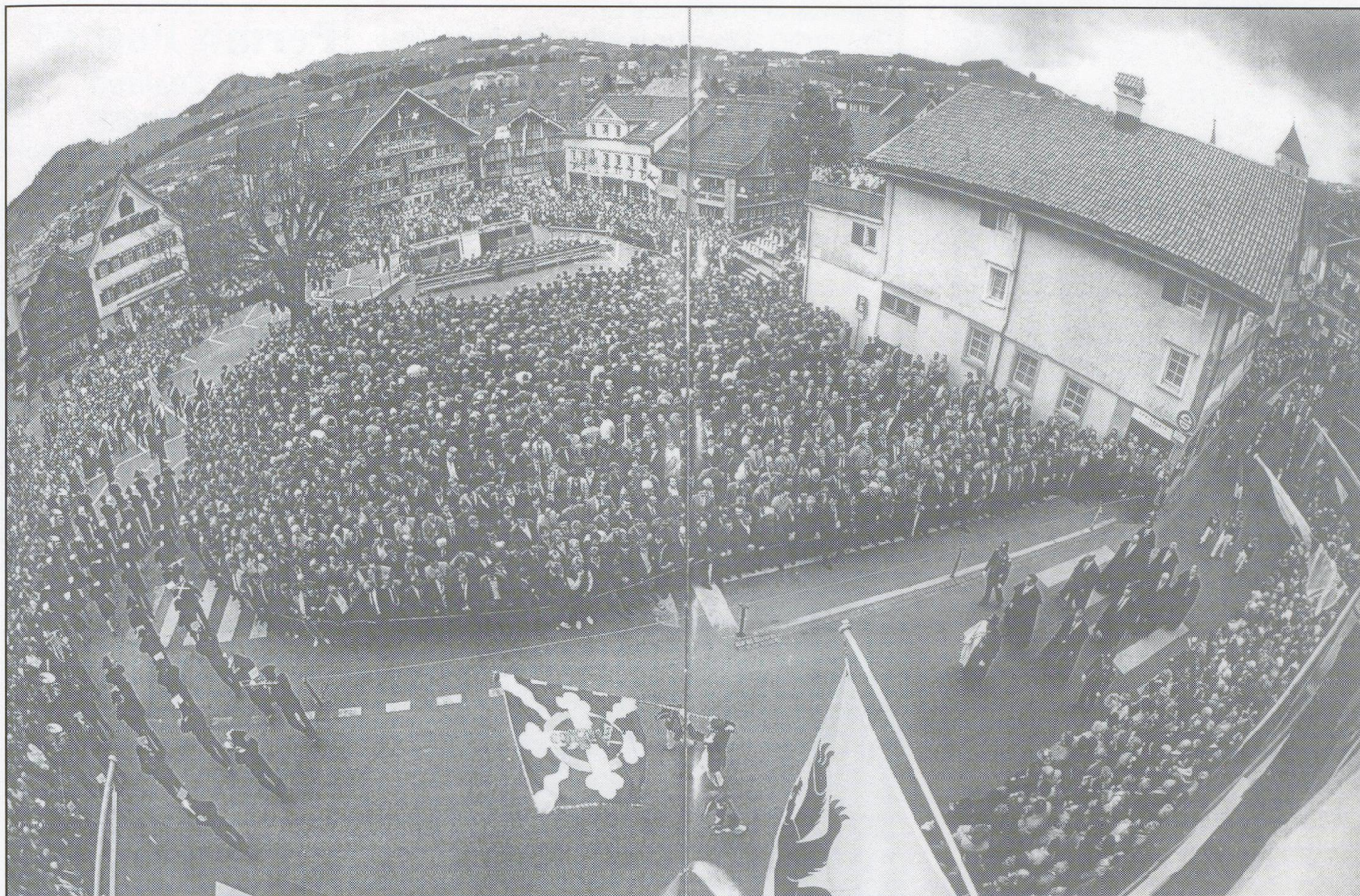
L'ETH Library est le fournisseur des revues numérisées. Elle ne détient aucun droit d'auteur sur les revues et n'est pas responsable de leur contenu. En règle générale, les droits sont détenus par les éditeurs ou les détenteurs de droits externes. La reproduction d'images dans des publications imprimées ou en ligne ainsi que sur des canaux de médias sociaux ou des sites web n'est autorisée qu'avec l'accord préalable des détenteurs des droits. [En savoir plus](#)

Terms of use

The ETH Library is the provider of the digitised journals. It does not own any copyrights to the journals and is not responsible for their content. The rights usually lie with the publishers or the external rights holders. Publishing images in print and online publications, as well as on social media channels or websites, is only permitted with the prior consent of the rights holders. [Find out more](#)

Download PDF: 18.02.2026

ETH-Bibliothek Zürich, E-Periodica, <https://www.e-periodica.ch>



Tradition supported with show of hands

Only card and sword carriers from the half canton are allowed to have their say.

Voting by a show of hands is still practiced in a few corners of Switzerland. The annual vote – or “Landsgemeinde” – in the half canton of Appenzell Innerrhoden in eastern Switzerland is one of the more colourful affairs.

The vote is an example of Switzerland’s direct democracy in action. Eligible voters in the half canton of Appenzell-Innerrhoden crowd into “Landsgemeinde” square on the last Sunday in April (April 29) to vote on local issues and elect the council.

The day begins with a religious service in the St Mauritius church – the town’s most imposing landmark. To the peal of church bells, the local authorities and guests of honour slowly make their way through the narrow streets of the old town to the podium in Landsgemeinde square.

Even though the tradition goes back about 600 years, the women of Ap-

penzell have only been allowed to take part since 1991. Appenzell was the last place in Switzerland to enfranchise them.

Women are required to present a voter identification card, while men can choose to present their card or stick to the age-old tradition of showing a sword as proof of their eligibility. In most cases, the swords are family heirlooms.

When the votes are eventually held, the officials judge the outcome by a quick glance at the crowd. In keeping with the social aspect of the affair, the day ends for most residents with a lively debate in one of the town’s many restaurants or bars.

Article by Swiss Radio International

FITTED BEDSHEETS for sale
towelling stretch, from Switzerland

Sizes: SINGLE ~ QUEEN ~ KING

Colours:

white ~ cream ~ green ~ cactus ~ yellow
pink ~ light blue ~ dark blue ~ burgundy

Ideal for Birthday or Wedding Presents

Ulrich and Ruth Baumberger, R D 4,
Hamilton. Phone/Fax 07 829 5886



NEW HORIZON
COLLEGE OF ENGLISH

Owned and Operated by New Horizon College Limited

Saletti zame!!

**English Language
in Napier**

Do you have friends or relations in Switzerland who would like to learn ENGLISH in the “Art Deco Capital of the World”, Napier, New Zealand?

Contact me at
New Horizon College of English
for details about our courses.

Christine Schmidli

Phone: 06-835-6423

06-TEL-NHCE

Fax: 06-835-6523

Email: english.newhorizon@clear.net.nz

www.nhce.ac.nz

*Very competitive rates.
Excellent quality programmes.
Wonderful modern campus.*