

Zeitschrift: Helvetia : magazine of the Swiss Society of New Zealand
Herausgeber: Swiss Society of New Zealand
Band: 60 (1994)
Heft: [1]

Artikel: Kapellbrücke back in operation in February 1994
Autor: [s.n.]
DOI: <https://doi.org/10.5169/seals-945472>

Nutzungsbedingungen

Die ETH-Bibliothek ist die Anbieterin der digitalisierten Zeitschriften auf E-Periodica. Sie besitzt keine Urheberrechte an den Zeitschriften und ist nicht verantwortlich für deren Inhalte. Die Rechte liegen in der Regel bei den Herausgebern beziehungsweise den externen Rechteinhabern. Das Veröffentlichen von Bildern in Print- und Online-Publikationen sowie auf Social Media-Kanälen oder Webseiten ist nur mit vorheriger Genehmigung der Rechteinhaber erlaubt. [Mehr erfahren](#)

Conditions d'utilisation

L'ETH Library est le fournisseur des revues numérisées. Elle ne détient aucun droit d'auteur sur les revues et n'est pas responsable de leur contenu. En règle générale, les droits sont détenus par les éditeurs ou les détenteurs de droits externes. La reproduction d'images dans des publications imprimées ou en ligne ainsi que sur des canaux de médias sociaux ou des sites web n'est autorisée qu'avec l'accord préalable des détenteurs des droits. [En savoir plus](#)

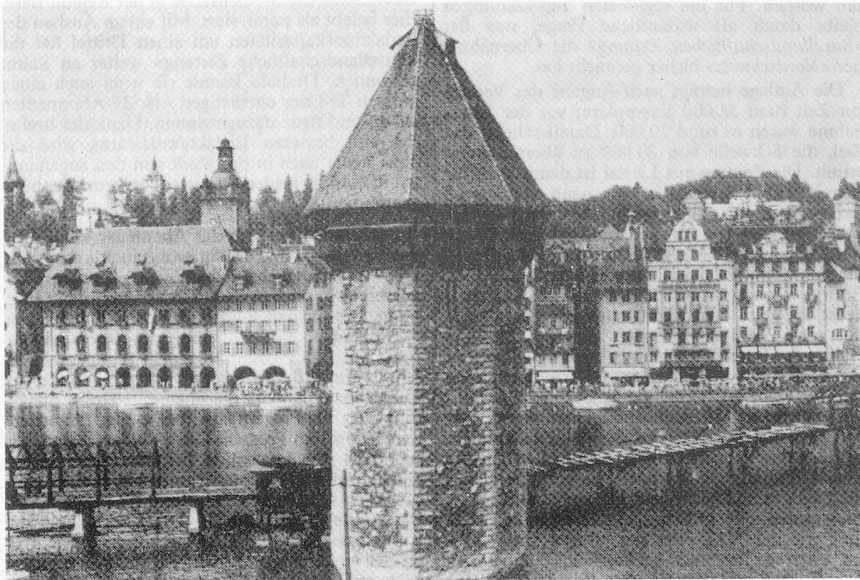
Terms of use

The ETH Library is the provider of the digitised journals. It does not own any copyrights to the journals and is not responsible for their content. The rights usually lie with the publishers or the external rights holders. Publishing images in print and online publications, as well as on social media channels or websites, is only permitted with the prior consent of the rights holders. [Find out more](#)

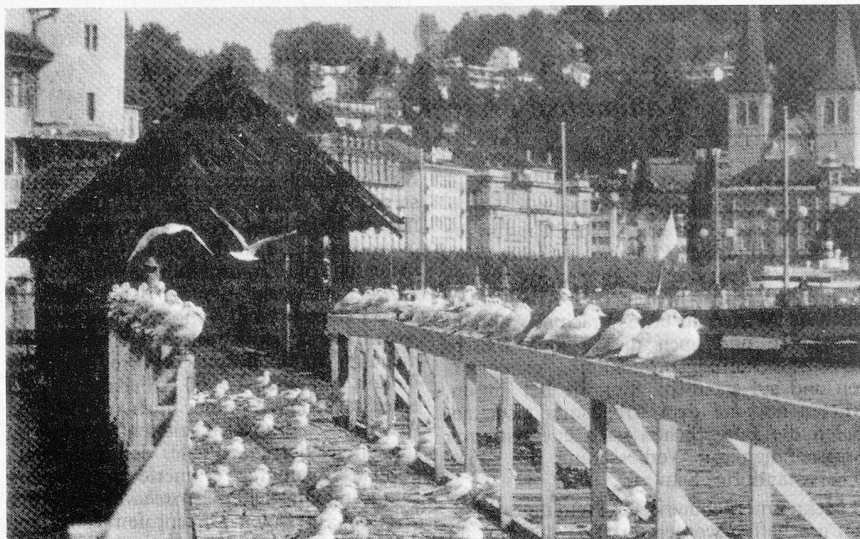
Download PDF: 22.02.2026

ETH-Bibliothek Zürich, E-Periodica, <https://www.e-periodica.ch>

KAPELLBRÜCKE BACK IN OPERATION IN FEBRUARY 1994



The picture shows what was left of the bridge after the disastrous fire of August 1993. The restoration of the bridge to its original state will have cost over 3.3 million SFR. The wooden construction has been re-built in timber taken from the local pine forests around Lucerne and match as best as possible both ends of the bridge which were saved from the fire. The cause of the fire has still not been fully established.



Sea-gulls take advantage of the temporary railings. In the background one of the two ends of the bridge that were saved from the fire.

ILLEGAL FREE TRAVEL

More and more people in Switzerland try to get free travel on railways, buses and trams. If this increase can be explained to a degree due to the recession,

it still puzzles the authorities as they catch not only pennyless drug addicts and down-and-out people, but also more and more well-to-do people such as bankers and wealthy housewives who try to travel without valid tickets on public transports.

In the Zurich area alone, over a period of 12 months, over 62,000 cases of illegal passengers were reported by the SBB who send out now an average of 100 requests for back-payment per week. The costs for not being in possession of a valid ticket is 50 SFR plus 14 SFR administration costs plus of course the actual unpaid fare. If these costs are not paid within 10 days, a fine of 150-300 SFR is imposed. But even so, in many cases the SBB has no hope of collecting any money at all, particularly from drug addicts, some of whom have been caught over a 100 times without tickets or money on trains in and out of Zurich.

HOW WELL DO YOU KNOW YOUR "FATHERLAND" ?

Here is a little fun quiz about Switzerland that might test your brains. See if you know all the answers (half cantons count as one canton each):

- 1) Which is the largest canton in size?
- 2) Which are the next five largest cantons in size?
- 3) Which is the smallest canton?
- 4) Which is the most populated canton?
- 5) Which are the next 5 most populated cantons?
- 6) Which is the least populated canton?
- 7) Which is the newest canton?
- 8) Which canton has the largest unproductive area of land percentage wise to its size?
- 9) Which canton has the highest productive land area percentage wise?
- 10) Which canton has the largest area of forest percentage wise to its size?
- 11) Which canton has the smallest area of forest percentage wise?
- 12) Which canton has the highest density of population?
- 13) Which canton has the lowest density of population?
- 14) Which canton has the highest average income per capita?
- 15) Which canton has the lowest average income per capita?
- 16) In which canton do people pay the highest income tax?
- 17) In which canton do people pay the lowest income tax?
- 18) Approximately how many motor vehicles would be registered in Switzerland? 1, 1½, 2, 2½, 3, 3½ million or more than 4 million?

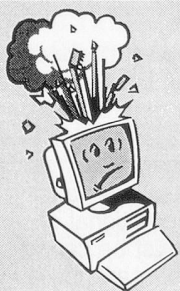
See how much you know or remember about your country. But do not be fooled by what you might remember from your school days, because things have changed a lot in Switzerland over the past few years.

Just to keep you in suspense, the answers will be published in the April issue of the Helvetia.

FÄSSLER Swiss Sausage Co.

**Cervelas - Schüblig
Wienerli (Frankfurters)
Bratwürst - Landjäger
Fleischkäs - Mostbrökli
Aufschnitt**

**Te Aroha West
(07) 884-8813**



COMPUTERS?

BEST PRICES, HIGH
QUALITY AND GOOD FREE
ADVICE
PHONE Edi ON
09/444-3020
FOR A COMPETITIVE
QUOTE!

E.G.B. ELECTRONIC SERVICES
P.O. Box 40-152, Auckland 10