

Zeitschrift: Helvetia : magazine of the Swiss Society of New Zealand
Herausgeber: Swiss Society of New Zealand
Band: 59 (1993)
Heft: [3]

Artikel: Swiss vineyards are small
Autor: [s.n.]
DOI: <https://doi.org/10.5169/seals-944688>

Nutzungsbedingungen

Die ETH-Bibliothek ist die Anbieterin der digitalisierten Zeitschriften auf E-Periodica. Sie besitzt keine Urheberrechte an den Zeitschriften und ist nicht verantwortlich für deren Inhalte. Die Rechte liegen in der Regel bei den Herausgebern beziehungsweise den externen Rechteinhabern. Das Veröffentlichen von Bildern in Print- und Online-Publikationen sowie auf Social Media-Kanälen oder Webseiten ist nur mit vorheriger Genehmigung der Rechteinhaber erlaubt. [Mehr erfahren](#)

Conditions d'utilisation

L'ETH Library est le fournisseur des revues numérisées. Elle ne détient aucun droit d'auteur sur les revues et n'est pas responsable de leur contenu. En règle générale, les droits sont détenus par les éditeurs ou les détenteurs de droits externes. La reproduction d'images dans des publications imprimées ou en ligne ainsi que sur des canaux de médias sociaux ou des sites web n'est autorisée qu'avec l'accord préalable des détenteurs des droits. [En savoir plus](#)

Terms of use

The ETH Library is the provider of the digitised journals. It does not own any copyrights to the journals and is not responsible for their content. The rights usually lie with the publishers or the external rights holders. Publishing images in print and online publications, as well as on social media channels or websites, is only permitted with the prior consent of the rights holders. [Find out more](#)

Download PDF: 09.08.2025

ETH-Bibliothek Zürich, E-Periodica, <https://www.e-periodica.ch>

GROUP TRAVEL TO SWITZERLAND

The Auckland Swiss Jodlers are off again to Switzerland this year to participate in the **22nd "EIDGENÖSSISCHES JODLERFEST"** in Samen, Obwalden, 18-19-20 June 1993.

The itinerary they have chosen to travel to Switzerland is quite unique and totally different from the usual routes to Europe. Travel will take them first to Taipei (Taiwan) where they will stay for 3 days and then to Seoul (South Korea) with a stop of 4 days there. In both places the Jodelgroup will present specially arranged public shows. The group will leave Auckland on Saturday June 5 and arrive in Zurich on Sunday June 13, in time to get to meet their families, settle in and get ready for the Jodel competition.

Anyone interested can join this group flight to Switzerland. Take the chance to visit Taipei and Seoul, two exotic and fascinating places not normally available on the usual routes to Europe. Visiting Taiwan and South Korea will be much more fun in a group than by yourselves.

Those members with limited time could still travel with the group as far as Taipei and then fly straight to Europe via Hong Kong.

Return travel from Europe back to New Zealand is on an individual basis. For all further details contact the Editor. But be quick, seats are limited.

MOTORWAY STICKERS IN GERMANY

Wenn Switzerland introduced motorway stickers a few years ago as a tax for the use of its motorway network, the most vocal complaints came from Germany. The German drivers felt it was unfair that foreign drivers had to pay a tax to be allowed to use the Swiss motorway network. (The French, Italians and Austrians could not really complain, because they all have had toll charges on their own motorways for quite some time).

The twist of the story is that Germany is now also planning to introduce motorway stickers on its very own network. So what were the Germans complaining about? User pays is the motto in Europe too, not just in New Zealand.

REINHART COLLECTION

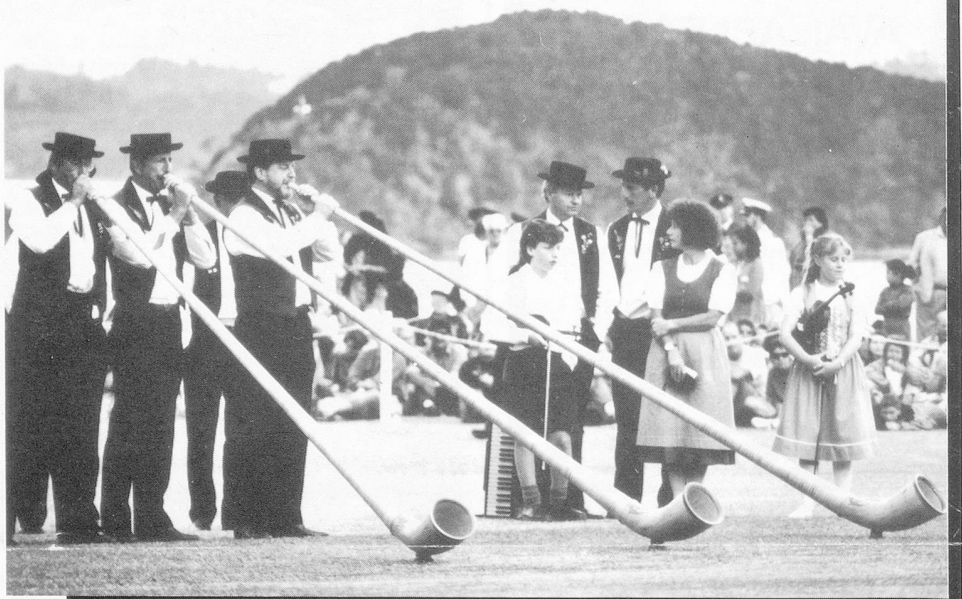
The Oskar Reinhart Art Collection of Winterthur will not be shipped to the New York Metropolitan Museum of Arts. The reason for the change of plans was due to public outcry, opposition and threats of court actions if the move should have taken place.

SWISS VINEYARDS ARE SMALL

Switzerland has 14933 hectares of vineyards spread over 32804 wine growers, thus the average vineyard is only around 4600 sq. meters in size, well under the European average of 15400 sq. meters.

THE SWISS AT WAITANGI

From left to right: Mink Abplanalp, Kurt Hirzel, Oscar and Pascal Roggen, Bruno Eberle, Peter and Ursula Arnold and Simone Roggen.



EX-KIWI CLUB SCHWEIZ



VERWANDTEN- BESUCHE NEUSEELAND

ZURICH - NEUSEELAND - ZURICH

Air New Zealand	SFr. 2'060.--	-	SFr. 2'970.--*
British Airways	SFr. 2'940.--	-	SFr. 3'050.--
Cathay Pacific	SFr. 2'460.--	-	SFr. 3'000.--
Malaysia Airlines	SFr. 2'160.--	-	SFr. 2'640.--
Singapore Airlines	SFr. 2'099.--	-	SFr. 2'760.--
Thai Airways	SFr. 2'960.--	-	SFr. 3'150.--
United Airlines	SFr. 2'280.--	-	SFr. 3'000.--

*from/to Frankfurt

Verlangen Sie den neuen Ozeanienkatalog beim Spezialisten für
Australien • Neuseeland • Südsee



**Zürcherstrasse 1 • 5400 Baden
Tel. 056/22 12 22**