

**Zeitschrift:** Helvetia : magazine of the Swiss Society of New Zealand  
**Herausgeber:** Swiss Society of New Zealand  
**Band:** 58 (1992)  
**Heft:** [12]  
  
**Artikel:** Classical music in construction site  
**Autor:** [s.n.]  
**DOI:** <https://doi.org/10.5169/seals-945264>

### **Nutzungsbedingungen**

Die ETH-Bibliothek ist die Anbieterin der digitalisierten Zeitschriften auf E-Periodica. Sie besitzt keine Urheberrechte an den Zeitschriften und ist nicht verantwortlich für deren Inhalte. Die Rechte liegen in der Regel bei den Herausgebern beziehungsweise den externen Rechteinhabern. Das Veröffentlichen von Bildern in Print- und Online-Publikationen sowie auf Social Media-Kanälen oder Webseiten ist nur mit vorheriger Genehmigung der Rechteinhaber erlaubt. [Mehr erfahren](#)

### **Conditions d'utilisation**

L'ETH Library est le fournisseur des revues numérisées. Elle ne détient aucun droit d'auteur sur les revues et n'est pas responsable de leur contenu. En règle générale, les droits sont détenus par les éditeurs ou les détenteurs de droits externes. La reproduction d'images dans des publications imprimées ou en ligne ainsi que sur des canaux de médias sociaux ou des sites web n'est autorisée qu'avec l'accord préalable des détenteurs des droits. [En savoir plus](#)

### **Terms of use**

The ETH Library is the provider of the digitised journals. It does not own any copyrights to the journals and is not responsible for their content. The rights usually lie with the publishers or the external rights holders. Publishing images in print and online publications, as well as on social media channels or websites, is only permitted with the prior consent of the rights holders. [Find out more](#)

**Download PDF:** 09.08.2025

**ETH-Bibliothek Zürich, E-Periodica, <https://www.e-periodica.ch>**



## HOW TO SAVE A MILLION SFR

In Switzerland, 131 Lotto players have so far become millionaires since LOTTO was introduced. The latest LOTTO millionaire in Switzerland has just collected a win of 6.6 million SFR. According to the Swiss law, lottery winnings are taxed at 35% before they are paid out. So the winner was left with some 4.290.000 SFR. But this is not the end of the matter as far as the taxman is concerned.

As you probably know, the level of taxes varies from county to county. So if the winner is lucky to live in Zug, where taxes are the lowest, he would receive a refund at the end of the year which would leave him with a final nett win of some 4.700.000 SFR. But if he is unfortunate enough to live in Geneva, where taxes are the highest, he would have to cough up a further 890.000 SFR, leaving him with "only" 3.400.000 SFR.

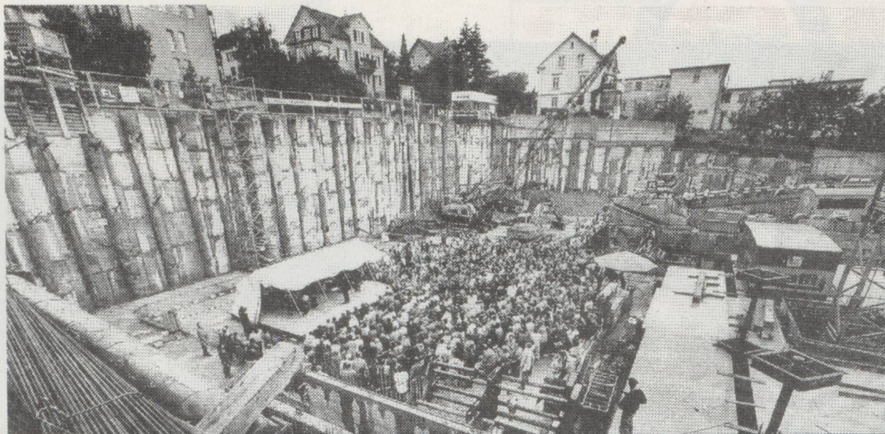
So by shifting his residence from Geneva to Zug he could make a cool 1.300.000 SFR additional profit. But the Catch 22 is that you should have shifted your residence to Zug before your win! Maybe the trick would be for all LOTTO players to register a residence in Zug before playing the game, just in case. (This would give Zug a population of several million people overnight, certainly a hefty headache for any administration).

## SEXIST STAMPS

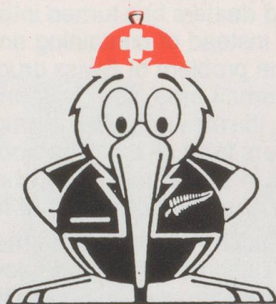


The new series of stamps issued by the Swiss PTT has been violently attacked by women's organisations as being sexist and degrading to women because they show the man in an active and the woman in a passive role. Even the fact that on one stamp the man is depicted as a rat did not pacify the women. For the PTT to take the stamps back is too late because, in view of the outcry against them, they had been snapped up immediately by collectors at such a fast rate that in most post offices they are now totally sold out.

## CLASSICAL MUSIC IN CONSTRUCTION SITE



In Thalwil (Zurich) neighbours to a huge construction site, tired of machinery noises, came up with the suggestion of holding a concert evening on the site itself. The experiment was a great success. With the help of some musicians from the Zurich Opera House, the local orchestra played in front of several hundred spectators. The construction site, well below street level, not only created quite a unique atmosphere but also provided excellent acoustics. With so many construction sites available, the experiment could easily be repeated in many places throughout Switzerland.



## EX-KIWI CLUB SCHWEIZ

## VERWANDTEN- BESUCHE NEUSEELAND

**ZÜRICH - NEUSEELAND - ZÜRICH**  
SFr. 2'580.-- — SFr. 3'100.--

### Gruppenflüge ab Zürich

#### Singapore Airlines (ohne Reiseleitung)

Hinflug	Rückflug
04. Nov. 92	05. Dez. 92
11. Nov. 92	12. Dez. 92
18. Nov. 92	19. Dez. 92
25. Nov. 92	26. Dez. 92
02. Dez. 92	05. Jan. 93
09. Dez. 92	12. Jan. 93
16. Dez. 92	19. Jan. 93
30. Dez. 92	30. Jan. 93
06. Jan. 93	06. Feb. 93
13. Jan. 93	13. Feb. 93
20. Jan. 93	20. Feb. 93
27. Jan. 93	27. Feb. 93
03. Feb. 93	06. März 93

#### British Airways (mit Knecht Reiseleitung auf dem Hinflug)

Hinflug	Rückflug
11. Dez. 92	08. Jan. 93
16. Dez. 92	15. Jan. 93
21. Dez. 92	22. Jan. 93

● Einzelflüge nach Neuseeland schon ab SFr. 2'060.- (Tiefsaison)



**Zürcherstrasse 1 • 5400 Baden**  
**Tel. 056/22 12 22**