

**Zeitschrift:** Helvetia : magazine of the Swiss Society of New Zealand  
**Herausgeber:** Swiss Society of New Zealand  
**Band:** 58 (1992)  
**Heft:** [11]  
  
**Nachruf:** Obituary  
**Autor:** R.D.

### **Nutzungsbedingungen**

Die ETH-Bibliothek ist die Anbieterin der digitalisierten Zeitschriften auf E-Periodica. Sie besitzt keine Urheberrechte an den Zeitschriften und ist nicht verantwortlich für deren Inhalte. Die Rechte liegen in der Regel bei den Herausgebern beziehungsweise den externen Rechteinhabern. Das Veröffentlichen von Bildern in Print- und Online-Publikationen sowie auf Social Media-Kanälen oder Webseiten ist nur mit vorheriger Genehmigung der Rechteinhaber erlaubt. [Mehr erfahren](#)

### **Conditions d'utilisation**

L'ETH Library est le fournisseur des revues numérisées. Elle ne détient aucun droit d'auteur sur les revues et n'est pas responsable de leur contenu. En règle générale, les droits sont détenus par les éditeurs ou les détenteurs de droits externes. La reproduction d'images dans des publications imprimées ou en ligne ainsi que sur des canaux de médias sociaux ou des sites web n'est autorisée qu'avec l'accord préalable des détenteurs des droits. [En savoir plus](#)

### **Terms of use**

The ETH Library is the provider of the digitised journals. It does not own any copyrights to the journals and is not responsible for their content. The rights usually lie with the publishers or the external rights holders. Publishing images in print and online publications, as well as on social media channels or websites, is only permitted with the prior consent of the rights holders. [Find out more](#)

**Download PDF:** 08.08.2025

**ETH-Bibliothek Zürich, E-Periodica, <https://www.e-periodica.ch>**



## HAMILTON SWISS CLUB

### FORTHCOMING EVENTS

#### YEAR END XMAS FUNCTION:

Sunday **29th November**, 4.00 pm, Hamilton Lake (meet by Yacht Club). An afternoon and evening function for young and old to close off the year. Games for the children will be available and those feeling energetic may decide to walk around the lake. B.Y.O. food and drink. B.B.Q. facilities will be available. Hope to see you there!

#### PICNIC AND SPORTS COMPETITION:

**27th/28th February**, Villigers farm in Kiwitahi.

**Saturday 27th** Shooting competition, 11.00 am start.

**Sunday 28th** Picnic with shotput and kegel competition, 11.00 am start. Food and drink available with games to entertain the children.

#### WELCOME TO NEW CLUB MEMBERS:

The Hamilton Swiss Club welcomes the following new members:

*Mr F. Arnold, Mr F. Schuler, Mr and Mrs Santner, Mr and Mrs Morgentaler.*

Word of Thanks: The Hamilton Swiss Club wishes to thank **Mr Zuest** for the organisation of the 1992 Jass competition. The club received its consolation prizes of cards much to the appreciation of the participants, as well as a refund of **\$346.50**, which will be used for the benefit of the club. Many thanks again **Mr Zuest** for all the work done by you in organising the Jass competition.

#### FONDUE EVENING:

Approximately 120 members and friends arrived at Eureka Hall for the traditionally popular Fondue and Medal Presentation evening. Yet again, the members' support for competition events was shown with the large number of medal winners who received their medal that evening. We hope this effort will continue at next year's picnic and card evenings. This year 16 commemorative medals were presented to the 6 card evening winners, the overall card winners, the highest scoring person in shotput, shooting and Kegeln competition. Everyone had an enjoyable evening of food, drink and dance. Many thanks to all those who contributed in making the evening such a success.

E.R.

*The Swiss PTT have announced that there are now over 200,000 mobile telephone subscribers in Switzerland.*

## WELLINGTON SWISS CLUB

**TRAMPING IN THE BELMONT REGIONAL PARK, SUNDAY, 15 NOVEMBER 1992, 10.00 AM sharp (Weather permitting).**

We will meet in Stratton Street, Normandale, the easiest access to Belmont Park. This park stretches over the Belmont hills between the Western Hutt Valley suburbs and the Johnsonville/Porirua Basin and from Wellington Harbour almost to Pauatahanui Inlet. It combines both public and private land use. There are many walking tracks and we will follow the track to Belmont Trig (457m), over reverting farmland and wind-swept native bush. Views across the harbour to the Heads, the Kaikouras, the Marlborough Sounds and the Tararua and Rimutaka Ranges provide an excuse for stopping and making the climb worth the effort.

This walk is suitable for fit children, but take good footwear, jerseys, parkas and adequate marching rations and drink with you. For further information give Walter Hartmann a ring (Ph. 236 6754 after 6.00 pm).

#### CHRISTMAS PARTY

**Saturday, 5 December 1992, 7.30 pm at the Club House.**

This is always a very popular event, so mark it in your calendar and come along to catch up with old friends and meet some new ones too! We will be serving a buffet style dinner and will start off the evening with our traditional Sangria. Please remember that the door next to the kitchen will be closed off again, to give the people who are preparing the lovely meal more room. The evening will cost **\$18.00 for members and \$22.00 for non-members**. Please make your bookings no later than **1 December 1992** with either R. Messmer (Ph 388-6249) or U. Dunn (Ph 237-8171).

#### CHILDREN'S CHRISTMAS PARTY

**Sunday, 6 December 1992, 3.00 pm at the Club House.**

Dear children, Father Christmas promised me he would visit us again this year and he said he is really looking forward to your poems and music items. So start practicing now! Could you please ask your Mum and Dad to bring along a plate for afternoon tea? Don't worry about the drinks. Auntie Ruth will have them ready for you! See you there.

#### SWISS CHOIR "BERGGLOECKLI"

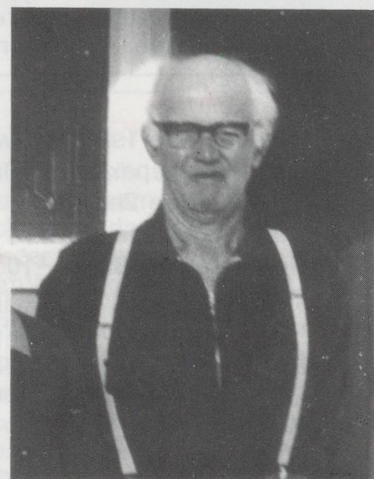
This 40 member strong choir will be visiting us on **3 and 4 February 1993**. At this stage we are looking for billets for the 40 visitors. If you can offer any accommodation for 1 or more of the visitors, we would like to hear from you. For further information please get in touch with Walter Hartmann (PH 236-6754 after 6.00 pm).



#### OBITUARY

The funeral service for the late **FRANZ VON-LANTHEN** was held at the Purewa crematorium chapel on Tuesday 29th of September 1992. Franz went to school in Alterswil. He worked as a farmer on his parents' farm. He trained as a cheese maker at a number of Swiss dairy factories before moving on to Canada. On his return to Switzerland he became a dealer in cheese. In 1938 Franz emigrated to New Zealand. Soon after his arrival he had a very bad motorcycle accident. After he became a dairy farmer in Turua before moving to Auckland. To his wife, daughter and three sons, we offer our sympathy. He will be remembered in Switzerland by his village. His ashes will be returned to Alterswil in Switzerland to be laid to rest.

J.R.B.



#### OBITUARY

**Mr. Herman Steiner 1911-1992**

Herman Steiner past away at his home at Hastings Road at the age of 81 years. He was born at Mahoe into a family of 8. With 21 years he moved on to the Hastings Road farm where he stayed all his life. In 1935 he married Anny Müller. He was a very well respected Member of the Swiss community, a man from "alten Stock", a very hard worker all his life, and his first priority was the family and the farm. He is survived by his wife and their three sons.

R.D.