

**Zeitschrift:** Veröffentlichungen des Geobotanischen Institutes der Eidg. Tech. Hochschule, Stiftung Rübel, in Zürich

**Herausgeber:** Geobotanisches Institut, Stiftung Rübel (Zürich)

**Band:** 106 (1991)

**Artikel:** Land use and vegetation changes in the hay meadows of the Ojcow National Park during the last thirty years

**Autor:** Korna, Jan / Dubiel, Eugeniusz

**DOI:** <https://doi.org/10.5169/seals-308928>

### **Nutzungsbedingungen**

Die ETH-Bibliothek ist die Anbieterin der digitalisierten Zeitschriften auf E-Periodica. Sie besitzt keine Urheberrechte an den Zeitschriften und ist nicht verantwortlich für deren Inhalte. Die Rechte liegen in der Regel bei den Herausgebern beziehungsweise den externen Rechteinhabern. Das Veröffentlichen von Bildern in Print- und Online-Publikationen sowie auf Social Media-Kanälen oder Webseiten ist nur mit vorheriger Genehmigung der Rechteinhaber erlaubt. [Mehr erfahren](#)

### **Conditions d'utilisation**

L'ETH Library est le fournisseur des revues numérisées. Elle ne détient aucun droit d'auteur sur les revues et n'est pas responsable de leur contenu. En règle générale, les droits sont détenus par les éditeurs ou les détenteurs de droits externes. La reproduction d'images dans des publications imprimées ou en ligne ainsi que sur des canaux de médias sociaux ou des sites web n'est autorisée qu'avec l'accord préalable des détenteurs des droits. [En savoir plus](#)

### **Terms of use**

The ETH Library is the provider of the digitised journals. It does not own any copyrights to the journals and is not responsible for their content. The rights usually lie with the publishers or the external rights holders. Publishing images in print and online publications, as well as on social media channels or websites, is only permitted with the prior consent of the rights holders. [Find out more](#)

**Download PDF:** 02.04.2026

**ETH-Bibliothek Zürich, E-Periodica, <https://www.e-periodica.ch>**

## **Land use and vegetation changes in the hay meadows of the Ojcow National Park during the last thirty years**

Jan KORNAŚ and Eugeniusz DUBIEL

### **1. INTRODUCTION**

Secondary hay meadows of the *Arrhenatheretalia* order formed a very typical component of the agricultural landscape in Europe 30-40 years ago. Since then most of them have been destroyed or strongly modified due to the changes in management practices. Such processes have been reported e.g. from Great Britain (HOPKINS and WAINWRIGHT 1989, HUGHES and HUNTLEY 1988), Holland (BAKKER 1987, OOMES and MOOI 1981), Norway (LOSVIK 1988, NORDENHAUG 1988), Switzerland (ANON. 1987, SCHMID and THOMET 1986, ZOLLER et al. 1983), Germany (DIERSCHKE 1978, 1980, HUNDT 1964, MEISEL 1983, MEISEL and HÜBSCHMANN 1976, ROSENTHAL and MÜLLER 1988, WEGENER and REICHHOFF 1989, WOLF 1979), Czechoslovakia (NEUHÄUSL and NEUHÄUSLOVA 1985) and other countries. They are presently very intensive in Poland. Methods of vegetation mapping are particularly suitable in documenting them. We should like to illustrate this by the example of the Ojcow National Park.

#### **Acknowledgements**

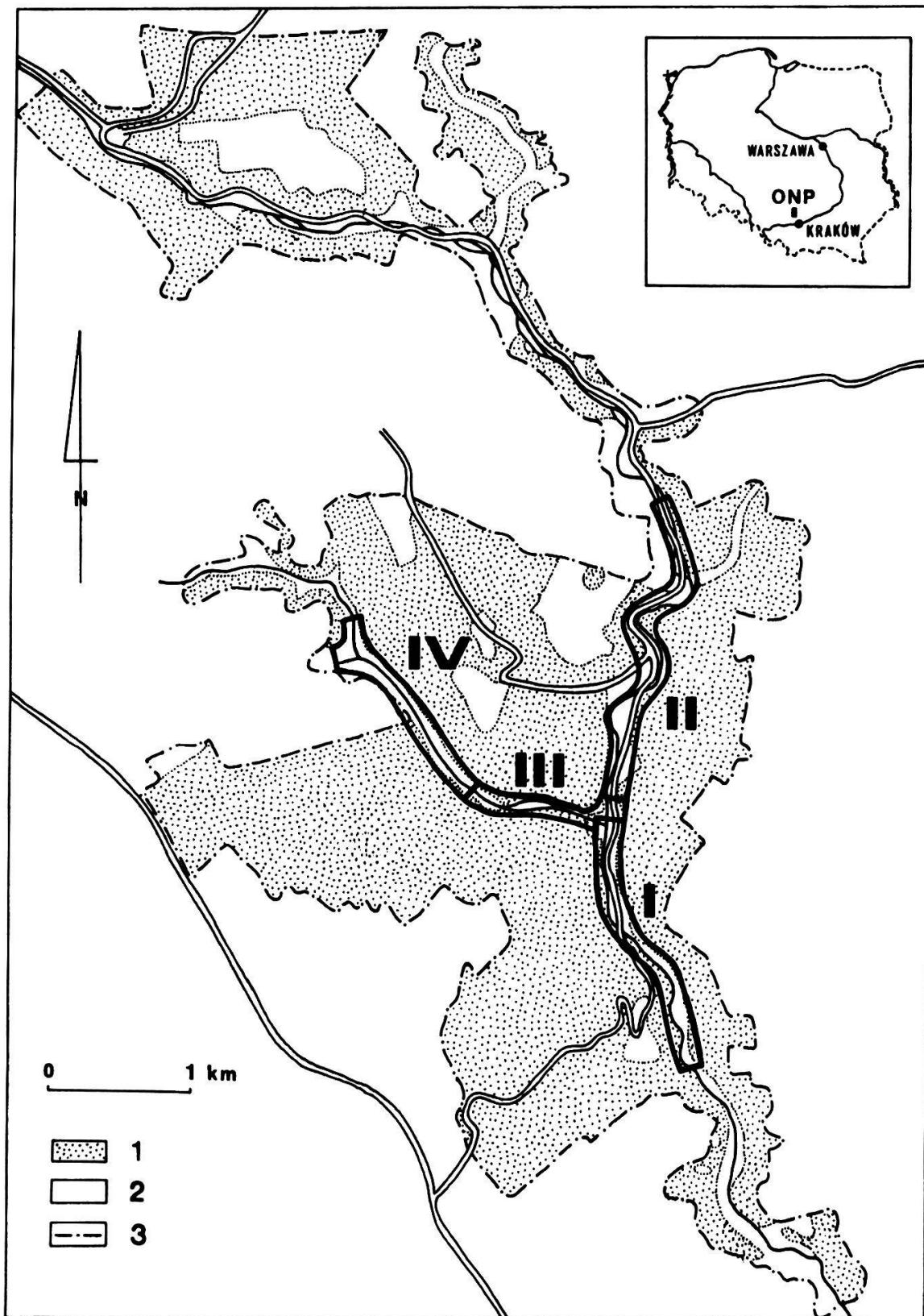
The project was partly supported by the grant of the Polish Academy of Sciences CPBP 04.04.

## 2. STUDY AREA AND METHODS

The Ojcow National Park (1570 ha), established in 1956, is located 22 km NNW of Cracow, in the southern part of the Cracow-Czestochowa Upland (Fig. 1). It includes the Pradnik River valley, 300 m a.s.l., with some secondary valleys and the adjacent plateau areas, rising to an altitude of 478 m. On the slopes, still covered with forests, picturesque rocks of white Jurassic limestone project from under younger deposits of Pleistocene loams and loess. On valley bottoms warp soils of alluvial origin prevail.

In 1958-1961 the actual vegetation was surveyed in the Ojcow National Park; 22 plant community types have been distinguished and their distribution has been mapped in the scale of 1:10'000 (MEDWECKA-KORNAS 1962, MEDWECKA-KORNAS and KORNAS 1963a,b,c). At that time, only two years after the National Park was established, the valley bottoms were covered mainly with semi-natural grassland vegetation, formed through the long-lasting traditional methods of mowing and grazing. Colourful hay meadows of the *Arrhenatheretum medioeuropaeum* association dominated. A minor part was played by fertile pastures (*Lolio-Cynosuretum*), wet meadows (*Cirsietum rivularis*), small-sedge communities (*Scheuchzerio-Caricetea fuscae*) and tall-sedge reeds (*Magnocaricion*). There were also scattered areas of arable fields and fragments of riverside forests (*Alno-Padion*), as well as tall-forb communities (*Geranio-Petasitetum hybridi*) along the rivulets.

Around 1960 the *Arrhenatheretum* in the Ojcow National Park was very homogenous and species-rich. In a single relevé 41-58 species of vascular plants per 100 m<sup>2</sup> were noted (average: 50 species per 100 m<sup>2</sup>). The community occupied mostly the habitats of the potential natural oak-hornbeam forests (*Tilio-Carpinetum*). It was very stable under the existing conditions, being maintained by the firmly settled traditional forms of human interference: hand-mowing (usually twice a year), extensive grazing (after the haymaking, especially in autumn) and regular manuring with stable dung. This dynamic equilibrium has been correctly defined in the first papers on the vegetation of the Ojcow National Park by Anna MEDWECKA-KORNAS and coworkers (MEDWECKA-KORNAS 1962, 1977a,b, MEDWECKA-KORNAS and KORNAS 1963a,b,c), and confirmed experimentally. For this purpose a permanent plot consisting of one of the most typical *Arrhenatheretum* stands in the Ojcow area has been excluded from mowing and studied continuously since 1964 by Krystyna JANKOWSKA and her colleagues (JANKOWSKA 1967, 1971, 1975, JANKOWSKA and WITKOWSKI 1978, MEDWECKA-KORNAS 1977a,b, WITKOWSKI 1969). Al-



**Fig. 1.** Ojcow National Park

1 - forests, 2 - arable fields and hay meadows, 3 - Park boundaries.

I, II, III, IV - segments of valley bottoms mapped in 1959-1961 and 1988 (see Figs. 2-4)

ready in the first year of observations, the amount of the dead organic matter increased considerably, tall hygrophilous grasses (such as *Dactylis glomerata* and *Deschampsia caespitosa*) became dominant, and several dicotyledonous plants decreased in number quite drastically. After 3-4 years of continual retrogression the plot no longer represented a stand of *Arrhenatheretum*, and after ten years shrubs and young trees became abundant, showing the incipience of forest encroachment.

To avoid this type of successional change in the meadows of the Ojcow National Park, recommendations for optimal management of the valley bottoms have been formulated, with strong emphasis on the active preservation of the existing greenland communities through traditional management practices (MEDWECKA-KORNAS 1977a,b). Unfortunately, very few of these demands have been realized. On the majority of meadows in the Park land use methods have been radically modified, and this resulted in a sweeping change in the plant cover. To document this change a second survey of vegetation of the valley bottoms was carried out by Eugeniusz DUBIEL and Jan KORNAS 30 years after the first one (KORNAS and DUBIEL in print). The phytosociological relevés from the years 1958-1959 were repeated in 1986-1987 (Tables 1, 2, 3), and the actual vegetation was remapped in 1988 (Figs. 2, 3, 4).

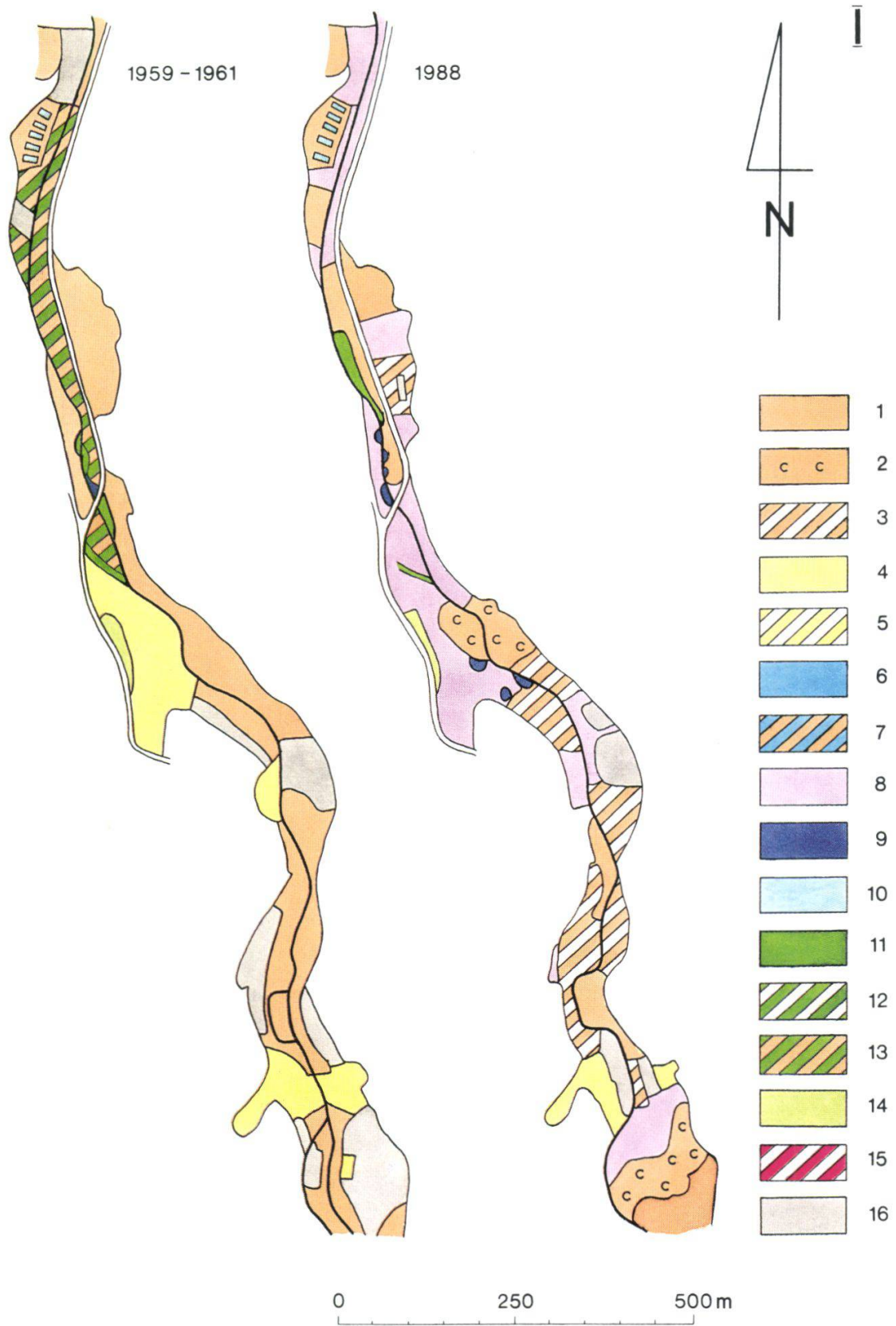
### 3. RESULTS

The results obtained may be summarized as follows: Mown grassland is still the dominant form of land use on the valley bottoms in the Ojcow National Park. Its total area even increased by 1 1/2 during the last 30 years. Plant community types distinguished in 1958-1959 still occur there, although the majority of stands appear to be profoundly modified. The most essential changes are those concerning the dominant community of *Arrhenatheretum medioeuropaeum*; they perfectly agree with the results of the successional

---

**Figs. 2-4** (p. 212-214). Plant communities on valley bottoms of the Ojcow National Park in 1959-1961 and 1988.

1 - *Arrhenatheretum*, 2 - *Arrhenatheretum*, *Cirsium oleraceum* variant, 3 - *Arrhenatheretum*, fragmentary stands, 4 - *Lolio-Cynosuretum*, 5 - *Lolio-Cynosuretum*, fragmentary stands, 6 - *Calthion*, 7 - transitional stands between *Calthion* and *Arrhenatheretum*, 8 - *Urtica dioica*-*Cirsium oleraceum* community, 9 - *Geranio-Petasitetum*, 10 - ponds, 11 - *Alno-Padion*, 12 - *Alno-Padion*, fragmentary stands, 13 - *Alno-Padion* and *Arrhenatheretum* complex, 14 - *Tilio-Carpinetum*, 15 - *Origano-Brachypodietum*, fragmentary stands, 16 - *Ruderali-Secalieta*.



**Fig. 2.** Plant communities on valley bottoms of the Ojcow National Park in 1959-1961 and 1988. (For further details see p. 211).

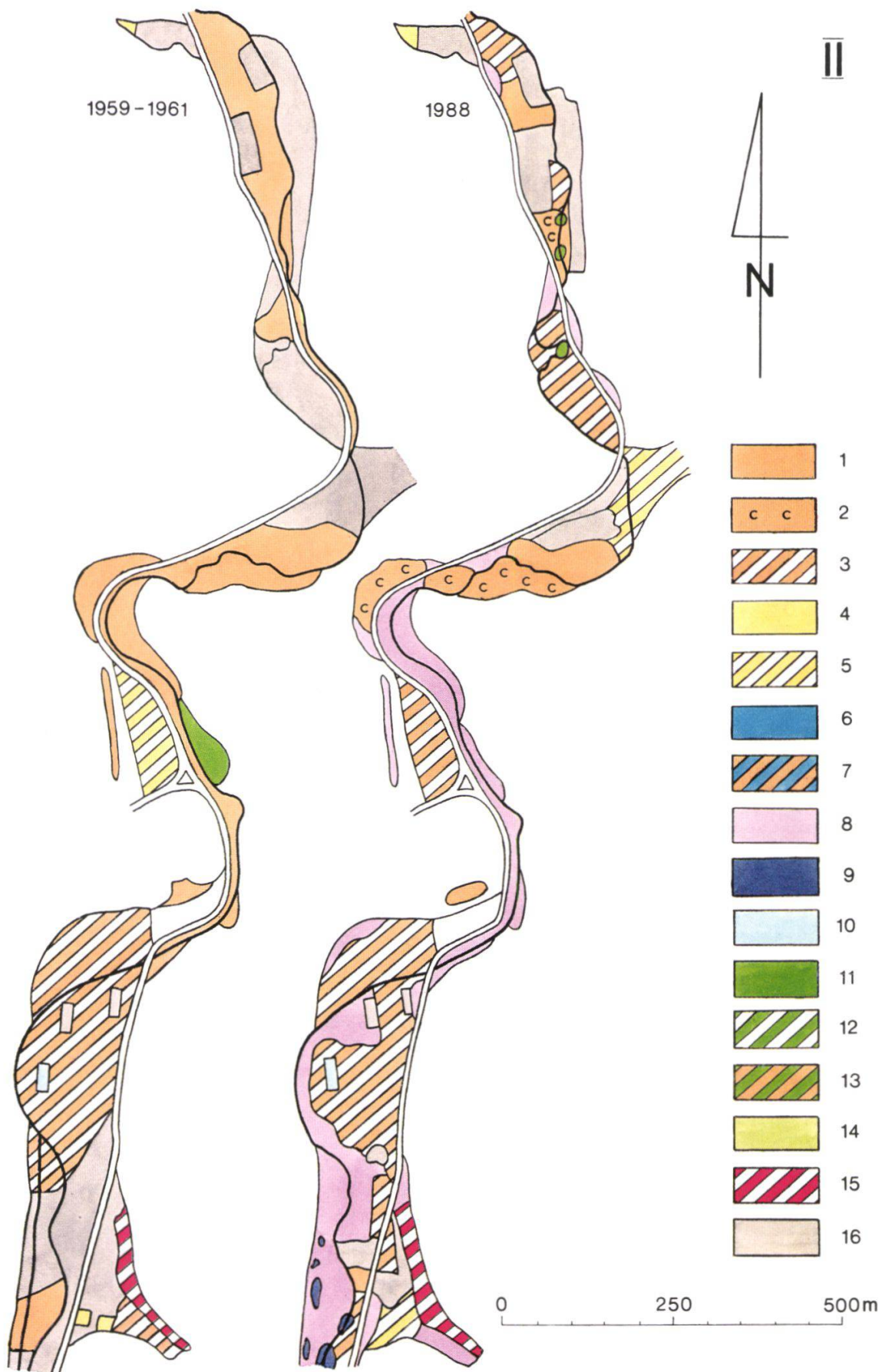


Fig. 3. Plant communities on valley bottoms of the Ojcow National Park in 1959-1961 and 1988. (For further details see p. 211).

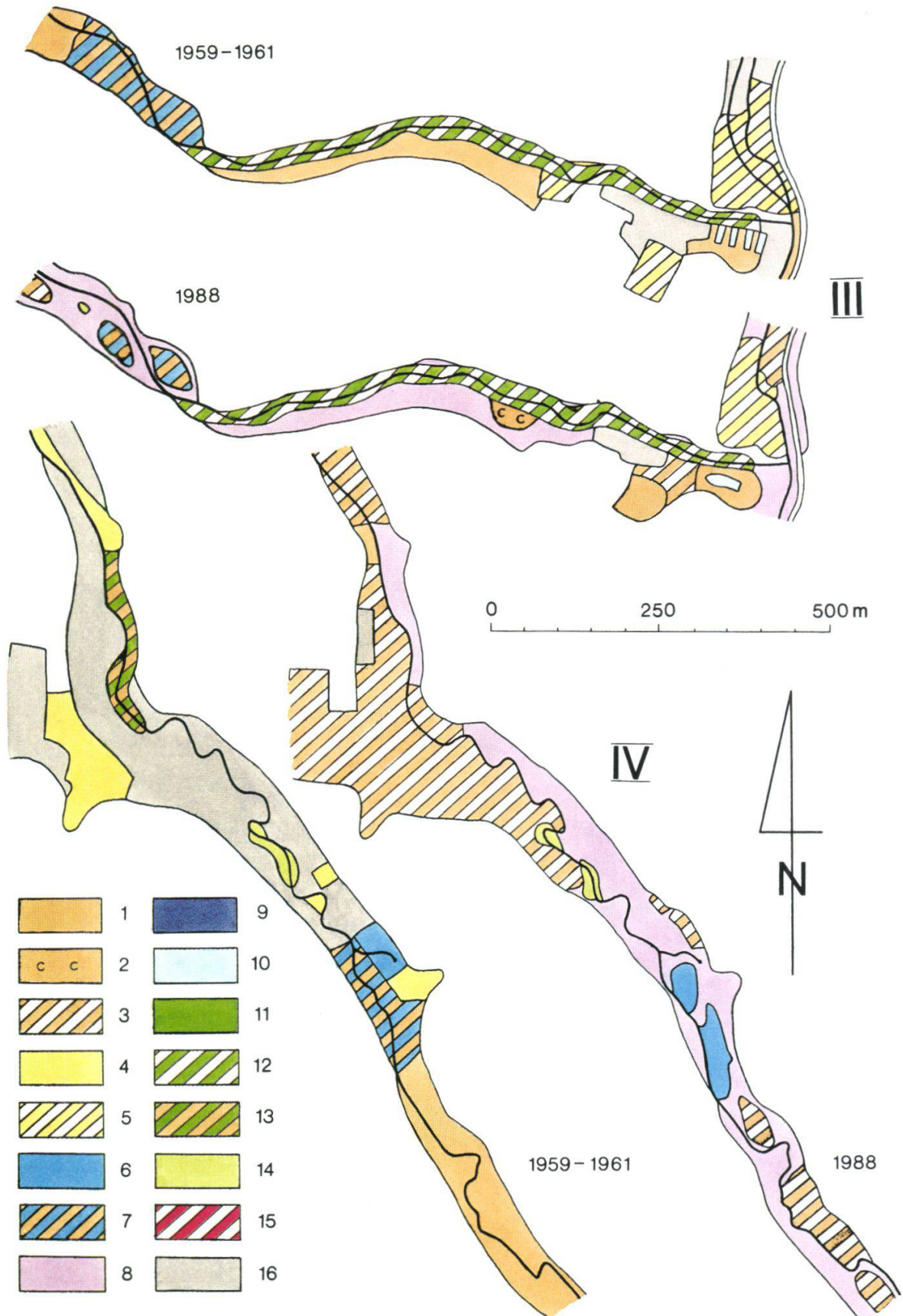


Fig. 4. Plant communities on valley bottoms of the Ojcow National Park in 1959-1961 and 1988. (For further details see p. 211).

experiment of Krystyna JANKOWSKA and her colleagues (JANKOWSKA 1967, 1971, 1975, JANKOWSKA and WITKOWSKI 1978, MEDWECKA-KORNAS 1977a,b, WITKOWSKI 1969).

The most important cause of the vegetation changes are changes in plant cover management practices. Three divergent trends have been discovered on meadows treated in three different ways:

**Trend I** (Table 1). On the meadows owned by individual farmers the hay is still being collected. The meadows are being fertilized with large quantities of mineral compounds (especially nitrogen) and mown regularly twice a year (usually by machinery). The former extensive grazing has been abandoned. Fodder-grass seeds are often sown, with or without ploughing of the sward. As a consequence of this type of management, the hay yields increased considerably, but at the same time the plant community became destabilized. The formerly homogeneous stands became much poorer and heterogenous with regard to their floristic composition, abundance-dominance values and vegetation structure. The average species number per 100 m<sup>2</sup> decreased from 50 to 33. As much as 32% of formerly recorded plant species disappeared, and only 19.4% of newcomers appeared in their stead. Thus, the total species list became poorer by 12.6%. Presence degrees and abundance-dominance values of the majority of the old components of the community markedly diminished. Many species formerly common in the *Arrhenatheretum* stands became very scanty and sporadic. The meadow turf is now usually composed mainly of one or a few fodder-grasses favoured by the farmers (e.g. *Arrhenatherum elatius*, *Dactylis glomerata*, *Festuca pratensis*, *Alopecurus pratensis*, *Poa pratensis*) and a few tall-forbs (e.g. *Geranium pratense*, *Heracleum sphondylium*, *Rumex acetosa*). The legumes (*Papilionaceae*, e.g. *Trifolium medium*, *T. pratense*, *Vicia cracca*) disappeared nearly completely, as also did the majority of species of the ground layer, more or less depending on sporadic grazing (e.g. *Prunella vulgaris*, *Leontodon hispidus*, *Plantago media*, etc.). Among the species which appeared as newcomers or expanded visibly, the most outstanding are the tall nitrophytes (e.g. *Rumex obtusifolius*, *Urtica dioica*, *Chaerophyllum aromaticum*). Changes in soil conditions, parallel to those in the plant cover, are testified by an increase in the average Ellenberg ecological indices with regard to assimilable nitrogen and - to some extent - to the soil reaction (pH).

**Table 1.** Trend I: Extensification  
a) *Arrhenatherum* (traditional use) → b) impoverished *Arrhenatherum* (intensive use)

|                                       | 1   | 2   | 3   | 4   | 5   | 6   | 7   | 1'   | 2'   | 3'   | 4'   | 5'   | 6'   | 7'   |   |   |
|---------------------------------------|-----|-----|-----|-----|-----|-----|-----|------|------|------|------|------|------|------|---|---|
| Table No. of record                   | 124 | 143 | 150 | 140 | 148 | 144 | 172 | 124' | 143' | 150' | 140' | 148' | 144' | 172' |   |   |
| Field No. of record                   | 59. | 59. | 59. | 59. | 59. | 59. | 60. | 87.  | 86.  | 86.  | 87.  | 87.  | 87.  | 87.  |   |   |
| Date                                  | 06. | 06. | 06. | 06. | 06. | 06. | 06. | 06.  | 06.  | 06.  | 06.  | 06.  | 06.  | 06.  |   |   |
|                                       | 15. | 15. | 17. | 16. | 15. | 15. | 15. | 20.  | 19.  | 17.  | 25.  | 25.  | 25.  | 25.  |   |   |
| Maximum height of plants (cm)         | 80  | 90  | 90  | 80  | 80  | 50  | 120 | 100  | 80   | 130  | 80   | 80   | 80   | 130  |   |   |
| Average height of plants (cm)         | 20  | 30  | 30  | 20  | 30  | 20  | 30  | 40   | 30   | 50   | 35   | 40   | 60   | 60   |   |   |
| Cover of herbaceous plants (%)        | 95  | 100 | 100 | 100 | 100 | 98  | 100 | 100  | 100  | 100  | 100  | 100  | 100  | 100  |   |   |
| Area of sample plot (m <sup>2</sup> ) | 100 | 100 | 100 | 100 | 100 | 100 | 100 | 100  | 100  | 100  | 100  | 100  | 100  | 100  |   |   |
| Number of species                     | 49  | 51  | 58  | 46  | 54  | 49  | 43  | 50   | 37   | 33   | 37   | 29   | 19   | 28   |   |   |
|                                       | ←   |     |     |     |     |     |     | →    |      |      |      |      |      |      | a | b |
|                                       | ←   |     |     |     |     |     |     | →    |      |      |      |      |      |      | a | b |

|                                       |     |     |     |     |     |     |     |     |     |     |     |     |     |     |    |     |
|---------------------------------------|-----|-----|-----|-----|-----|-----|-----|-----|-----|-----|-----|-----|-----|-----|----|-----|
| <b>Ch. Arrhenatherion</b>             |     |     |     |     |     |     |     |     |     |     |     |     |     |     |    |     |
| <i>Geranium pratense</i>              | 3.2 | 2.2 | 2.1 | 2.2 | 3.2 | 2.2 | +   | 3.2 | 1.2 | +   | +2  | 2.2 | +2  | .   | V  | V   |
| <i>Knautia arvensis</i>               | 2.1 | +   | +   | 1.1 | +   | 1.1 | 1.1 | +2  | .   | +2  | +   | .   | .   | +   | V  | III |
| <i>Crepis biennis</i>                 | +   | 2.1 | +   | 2.1 | 1.1 | 2.2 | .   | .   | 1.1 | +   | +   | .   | .   | .   | V  | III |
| <i>Arrhenatherum elatius</i>          | 2.2 | +   | .   | +2  | +2  | 1.1 | .   | 2.2 | 2.3 | 3.3 | .   | .   | .   | .   | IV | III |
| <i>Galium mollugo</i>                 | 2.1 | +   | +2  | .   | +2  | +2  | .   | +   | 2.2 | 1.2 | .   | .   | .   | .   | IV | III |
| <i>Campanula patula</i>               | .   | +   | +   | +   | +   | +   | +   | .   | .   | .   | +   | +   | .   | .   | IV | II  |
| <i>Alchemilla gracilis</i>            | .   | +   | +   | +   | +   | .   | .   | .   | .   | .   | .   | .   | .   | .   | IV | -   |
| <i>Alchemilla monticola</i>           | .   | +   | .   | .   | .   | .   | .   | .   | .   | .   | .   | .   | .   | .   | I  | I   |
| <i>Alchemilla</i> cfr. <i>walasii</i> | .   | .   | +   | .   | .   | .   | .   | .   | .   | .   | .   | .   | .   | .   | I  | -   |
| <i>Pastinaca sativa</i>               | 1.1 | .   | .   | .   | .   | .   | .   | .   | .   | .   | .   | .   | .   | .   | I  | -   |
| <b>Ch. Cynosurion</b>                 |     |     |     |     |     |     |     |     |     |     |     |     |     |     |    |     |
| <i>Bellis perennis</i>                | +   | 2.2 | 2.2 | 1.1 | +   | +   | +   | .   | 1.1 | +   | +   | +   | .   | .   | V  | III |
| <i>Phleum pratense</i>                | .   | +   | +2  | +   | +2  | +2  | +2  | .   | +   | .   | +   | +   | 2.2 | +   | V  | IV  |
| <i>Trifolium repens</i>               | 2.1 | 1.2 | 2.2 | 2.3 | 1.1 | 1.1 | 2.2 | .   | .   | .   | 1.2 | 2.2 | 1.2 | 2.2 | V  | III |
| <i>Cynosurus cristatus</i>            | .   | .   | +   | .   | +2  | .   | .   | .   | .   | .   | +2  | .   | .   | .   | II | I   |
| <i>Lolium perenne</i>                 | .   | +   | +   | .   | .   | .   | .   | .   | .   | .   | +   | .   | .   | .   | II | I   |

Table 1 (continued)

| Table No. of record                | 1   | 2   | 3   | 4   | 5   | 6   | 7   | 1'  | 2'  | 3'  | 4'  | 5'  | 6'  | 7'  | a   | b   |
|------------------------------------|-----|-----|-----|-----|-----|-----|-----|-----|-----|-----|-----|-----|-----|-----|-----|-----|
|                                    | ←   | ←   | ←   | ←   | ←   | ←   | ←   | ←   | ←   | ←   | ←   | ←   | ←   | ←   | ←   | ←   |
| <b>Ch. Arrhenatheretalia</b>       |     |     |     |     |     |     |     |     |     |     |     |     |     |     |     |     |
| <i>Dactylis glomerata</i>          | +   | 3.2 | 1.1 | 1.1 | 2.2 | 2.2 | 2.1 | 1.1 | 3.3 | 1.2 | +2  | +2  | 3.3 | 3.3 | V   | V   |
| <i>Heracleum sphondylium</i>       | +   | 2.1 | 1.1 | 2.2 | 1.1 | 1.1 | 2.2 | +   | 2.2 | 1.1 | +   | 1.1 | 1.1 | 1.1 | V   | V   |
| <i>Taraxacum officinale</i>        | +   | 1.2 | 1.1 | 1.1 | 1.1 | +   | 2.1 | 1.2 | +   | +3  | +2  | 1.1 | 1.2 | 1.1 | V   | V   |
| <i>Leucanthemum vulgare</i>        | 3.2 | +2  | 2.2 | 1.1 | 2.2 | +2  | +   | 2.2 | 2.2 | 2.2 | 1.1 | 1.1 | 1.1 | 1.1 | V   | III |
| <i>Trisetum flavescens</i>         | 2.2 | +2  | 2.2 | 1.1 | 1.1 | +   | 2.2 | 2.2 | 2.2 | 2.2 | 1.1 | 1.1 | 1.1 | 1.1 | V   | III |
| <i>Trifolium dubium</i>            | +   | 2.2 | 2.2 | 2.2 | 1.1 | +   | 2.2 | 2.2 | 2.2 | 2.2 | 1.1 | 1.1 | 1.1 | 1.1 | V   | -   |
| <i>Tragopogon orientalis</i>       | +   | 2.2 | 2.2 | 2.2 | 1.1 | +   | 2.2 | 2.2 | 2.2 | 2.2 | 1.1 | 1.1 | 1.1 | 1.1 | III | -   |
| <i>Pimpinella major</i>            | +   | 2.2 | 2.2 | 2.2 | 1.1 | +   | 2.2 | 2.2 | 2.2 | 2.2 | 1.1 | 1.1 | 1.1 | 1.1 | I   | II  |
| <b>Ch. Molinietalia</b>            |     |     |     |     |     |     |     |     |     |     |     |     |     |     |     |     |
| <i>Deschampsia caespitosa</i>      | 1.2 | +2  | +2  | +2  | +2  | +2  | 2.2 | 2.2 | +2  | 2.2 | 3.2 | 3.2 | 3.2 | 3.2 | V   | III |
| <i>Lychnis flos-cuculi</i>         | +   | +   | +   | +   | +   | +   | 1.1 | 1.1 | 1.1 | +   | +   | +   | 1.1 | 1.1 | III | III |
| <i>Cirsium rivulare</i>            | +   | +   | +   | +   | +   | +   | +2  | +   | +   | +   | +   | +   | +   | +2  | II  | I   |
| <i>Equisetum palustre</i>          | +   | +   | +   | +   | +   | +   | +   | +   | +   | +   | +   | +   | +   | +   | II  | -   |
| <i>Cirsium oleraceum</i>           | +   | +   | +   | +   | +   | +   | 1.2 | 1.2 | 1.2 | 1.2 | 1.2 | 1.2 | 1.2 | 1.2 | I   | II  |
| <b>Ch. Molinio-Arrhenatheretea</b> |     |     |     |     |     |     |     |     |     |     |     |     |     |     |     |     |
| <i>Festuca pratensis</i>           | +   | 2.2 | 2.2 | 2.2 | 2.2 | 3.2 | 3.2 | +2  | 2.2 | 2.2 | 2.2 | 2.2 | 2.2 | 2.2 | V   | V   |
| <i>Ranunculus acris</i>            | +   | 1.1 | 2.1 | 1.1 | 1.1 | 1.1 | 1.1 | 1.1 | 1.1 | 1.1 | +   | +   | 1.1 | 1.1 | V   | V   |
| <i>Rumex acetosa</i>               | 1.1 | 2.2 | 2.1 | 1.2 | 2.1 | 2.1 | 1.1 | 1.1 | 1.1 | +   | 3.2 | 2.1 | 1.1 | 2.1 | V   | V   |
| <i>Veronica chamaedrys</i>         | 1.1 | 1.2 | 1.1 | 1.1 | 1.2 | 1.1 | +2  | 2.1 | 2.2 | 2.2 | +   | 1.1 | 1.1 | 1.1 | V   | V   |
| <i>Alopecurus pratensis</i>        | +   | 2.2 | 2.2 | 2.2 | 2.2 | 2.2 | 2.1 | 1.1 | 1.1 | 1.1 | +   | 1.1 | 1.1 | 3.3 | V   | IV  |
| <i>Cerastium vulgatum</i>          | +   | 1.1 | 2.1 | 1.1 | 1.1 | 2.1 | 1.1 | 1.1 | 1.1 | 1.1 | 2.2 | 2.2 | +   | 1.1 | V   | IV  |
| <i>Achillea millefolium</i>        | +   | 1.1 | 1.1 | 1.1 | 1.1 | 1.1 | +   | +   | 1.2 | +   | 1.2 | 1.2 | 1.2 | 1.2 | V   | III |
| <i>Festuca rubra</i>               | 1.1 | 1.2 | 2.2 | 2.2 | 2.2 | 1.2 | 3.2 | +   | 2.2 | 2.2 | 2.2 | 2.1 | 2.1 | 2.1 | V   | III |
| <i>Lathyrus pratensis</i>          | 1.1 | 1.1 | +   | +   | +   | +   | 1.1 | 2.2 | 1.1 | 1.1 | 1.1 | 1.1 | 1.1 | 1.1 | V   | III |
| <i>Plantago lanceolata</i>         | 1.1 | +   | 2.1 | 1.1 | 1.1 | 2.1 | 2.1 | 1.1 | 1.1 | 1.1 | 1.1 | 1.1 | 1.1 | 1.1 | V   | III |
| <i>Poa trivialis</i>               | +   | 2.1 | +   | 1.1 | 2.1 | 1.2 | 1.1 | +   | +   | 1.2 | 1.2 | 1.2 | 1.2 | 3.3 | V   | III |



Table 1 (continued)

| Table No. of record   | 1 | 2   | 3  | 4 | 5 | 6 | 7 | 1'  | 2'  | 3'  | 4' | 5'  | 6'  | 7'  | a  | b   |  |
|---|---|-----|----|---|---|---|---|-----|-----|-----|----|-----|-----|-----|----|-----|--|
|   | ← |     |    | ← |   |   | ← |     |     | ←   |    |     | ←   |     |    |     |  |
|   | ← |     |    | ← |   |   | ← |     |     | ←   |    |     | ←   |     |    |     |  |
| <i>Carex muricata</i>   | + | .   | +2 | . | . | . | . | +2  | .   | .   | .  | .   | .   | .   | II | I   |  |
| <i>Equisetum arvense</i>  | . | .   | .  | + | . | + | . | .   | .   | .   | .  | +   | .   | .   | II | I   |  |
| <i>Carex hirta</i>  | . | .   | +2 | . | . | . | + | .   | .   | .   | .  | .   | .   | .   | II | -   |  |
| <i>Eurynchium hians</i> (d)   | . | 1.1 | .  | + | . | . | . | .   | .   | .   | .  | .   | .   | .   | II | -   |  |
| <i>Potentilla reptans</i>   | + | .   | +  | . | . | . | . | .   | .   | .   | .  | .   | .   | .   | II | -   |  |
| <i>Sinapis arvensis</i>   | . | +   | .  | . | . | . | . | .   | .   | .   | .  | .   | .   | .   | II | -   |  |
| <i>Rumex obtusifolius</i>   | . | .   | +2 | . | . | . | + | .   | .   | .   | .  | 2.3 | 1.2 | 1.2 | II | III |  |
| <i>Vicia sepium</i>   | + | .   | .  | . | . | . | . | +2  | 1.1 | 1.1 | .  | .   | .   | .   | I  | III |  |
| <i>Anthriscus sylvestris</i>  | . | .   | .  | . | . | . | . | .   | +   | +   | .  | +2  | 1.1 | .   | -  | III |  |
| <i>Urtica dioica</i>  | . | .   | .  | . | . | . | . | .   | +2  | +2  | .  | +2  | 1.2 | .   | -  | III |  |
| <i>Agropyron repens</i>   | . | .   | .  | . | . | . | . | .   | .   | .   | +  | .   | 3.3 | .   | -  | II  |  |
| <i>Chaerophyllum aromaticum</i>   | . | .   | .  | . | . | . | . | .   | +   | +   | .  | .   | .   | .   | -  | II  |  |
| <i>Galium aparine</i>   | . | .   | .  | . | . | . | . | +   | .   | +   | .  | .   | .   | .   | -  | II  |  |
| <i>Geranium phaeum</i>  | . | .   | .  | . | . | . | . | 2.1 | .   | 1.2 | .  | .   | .   | .   | -  | II  |  |
| <b>Sporadic species</b>   |   |     |    |   |   |   |   |     |     |     |    |     |     |     |    |     |  |
| <i>Ch. Cynosurion</i> : <i>Leontodon autumnalis</i> 6, 4'.  |   |     |    |   |   |   |   |     |     |     |    |     |     |     |    |     |  |
| <i>Ch. Arrhenatheretalia</i> : <i>Carum carvi</i> 4, <i>Lotus corniculatus</i> 6.   |   |     |    |   |   |   |   |     |     |     |    |     |     |     |    |     |  |
| <i>Ch. Molinieta</i> : <i>Filipendula ulmaria</i> 7, <i>Geranium palustre</i> 1 (1.1), 3' (3.2), <i>Mentha longifolia</i> 3', <i>Scirpus sylvaticus</i> 7.  |   |     |    |   |   |   |   |     |     |     |    |     |     |     |    |     |  |
| <i>Ch. Molinio-Arrhenatheretea</i> : <i>Agrostis stolonifera</i> 7, 5' (1.2).   |   |     |    |   |   |   |   |     |     |     |    |     |     |     |    |     |  |
| Other species: <i>Acer pseudoplatanus</i> 3, 1', <i>Ajuga reptans</i> 1, 1', <i>Alchemilla subcrenata</i> 5, <i>Anthemis arvensis</i> 3, <i>Arabis hirsuta</i> 1', <i>Arenaria serpyllifolia</i> 1, <i>Asarum europaeum</i> 1' (1.1), <i>Brachypodium pinnatum</i> 1' (1.2), <i>Calligonella cuspidata</i> (d) 6, 5', <i>Carpinus betulus</i> 1', <i>Cerastium arvense</i> 1', <i>Clinopodium vulgare</i> 1, 1', <i>Coronilla varia</i> 1, 1' (1.2), <i>Fragaria viridis</i> 1 (3.2), 1', <i>Galium verum</i> 1 (1.1), 1', <i>Hypericum maculatum</i> 4, <i>H. perforatum</i> 1, <i>Lamium maculatum</i> 1', <i>Lophocolea</i> sp. (d) 2, <i>Mentha arvensis</i> 5, <i>Moehringia trinervia</i> 1', <i>Myosotis sylvatica</i> 1', <i>Phalaris arundinacea</i> 7, <i>Pimpinella saxifraga</i> 1 (1.1), 2', <i>Plantago major</i> 4', <i>Poa annua</i> 5, <i>Potentilla anserina</i> 6', <i>Primula elatior</i> 3, 3' (1.1), <i>Salix caprea</i> 1', <i>Salvia pratensis</i> 1, <i>Sedum sexangulare</i> 1, <i>Stellaria holostea</i> 1' (+2), <i>Thymus pulegioides</i> 1 (1.2), <i>Viola collina</i> 1. |   |     |    |   |   |   |   |     |     |     |    |     |     |     |    |     |  |

**Table 2.** Trend II: Extensification

a) *Arrhenatheretum* (traditional use) → c) truncated *Arrhenatheretalia* community (mowing without hay removal).

| Table No. of record                   | 1     | 2   | 3   | 4   | 5   | 1'    | 2'  | 3'   | 4'   | 5'  |          |     |
|---------------------------------------|-------|-----|-----|-----|-----|-------|-----|------|------|-----|----------|-----|
| Field No. of record                   | 145   | 9   | 157 | 158 | 8   | 145'  | 9'  | 157' | 158' | 8'  |          |     |
| Date                                  | 59.   | 58. | 59. | 59. | 58. | 87.   | 86. | 86.  | 87.  | 86. |          |     |
|                                       | 06.   | 07. | 06. | 06. | 07. | 06.   | 06. | 06.  | 06.  | 06. |          |     |
|                                       | 15.   | 08. | 17. | 17. | 08. | 25.   | 17. | 17.  | 19.  | 17. |          |     |
| Maximum height of plants (cm)         | 80    | 80  | 100 | 80  | 80  | 160   | 90  | 140  | 140  | 130 |          |     |
| Average height of plants (cm)         | 30    | 25  | 30  | 15  | 40  | 70    | 20  | 50   | 30   | 70  |          |     |
| Cover of herbaceous plants (%)        | 100   | 100 | 98  | 100 | 98  | 100   | 95  | 100  | 100  | 100 | Presence |     |
| Area of sample plot (m <sup>2</sup> ) | 100   | 250 | 100 | 100 | 100 | 100   | 250 | 100  | 100  | 100 | degree   |     |
| Number of species                     | 52    | 56  | 55  | 61  | 63  | 26    | 42  | 35   | 39   | 29  | a        | c   |
|                                       | ← a → |     |     |     |     | ← c → |     |      |      |     |          |     |
| <b>Ch. Arrhenatherion</b>             |       |     |     |     |     |       |     |      |      |     |          |     |
| <i>Arrhenatherum elatius</i>          | .     | 2.2 | +2  | +2  | 1.1 | 3.2   | 2.2 | +    | .    | 1.1 | IV       | IV  |
| <i>Crepis biennis</i>                 | .     | 1.1 | +   | +   | 1.1 | .     | .   | .    | .    | .   | IV       | -   |
| <i>Alchemilla gracilis</i>            | .     | 1.1 | +   | .   | +   | .     | +   | .    | +    | .   | III      | II  |
| <i>Galium mollugo</i>                 | .     | +   | +2  | .   | 1.1 | .     | 2.2 | .    | .    | 2.2 | III      | II  |
| <i>Knautia arvensis</i>               | .     | 1.1 | .   | +   | 1.1 | .     | 1.1 | .    | +2   | .   | III      | II  |
| <i>Alchemilla</i> cfr. <i>walasii</i> | .     | +   | .   | +   | .   | .     | +2  | .    | +    | .   | II       | II  |
| <i>Campanula patula</i>               | .     | .   | .   | +   | +   | .     | .   | .    | +    | .   | II       | I   |
| <i>Geranium pratense</i>              | .     | .   | +   | 2.2 | .   | 1.2   | .   | .    | .    | .   | II       | I   |
| <i>Alchemilla monticola</i>           | .     | +   | .   | .   | .   | .     | .   | .    | .    | .   | I        | -   |
| <b>Ch. Cynosurion</b>                 |       |     |     |     |     |       |     |      |      |     |          |     |
| <i>Phleum pratense</i>                | 1.2   | 1.1 | +   | +   | +   | +     | .   | .    | .    | .   | V        | I   |
| <i>Trifolium repens</i>               | +     | 3.3 | 2.3 | 3.3 | 1.1 | .     | .   | .    | .    | .   | V        | -   |
| <i>Bellis perennis</i>                | 2.1   | +   | 2.2 | .   | +   | .     | .   | .    | .    | .   | IV       | -   |
| <i>Cynosurus cristatus</i>            | .     | 1.1 | 1.2 | +   | 1.1 | .     | .   | .    | .    | .   | IV       | -   |
| <i>Leontodon autumnalis</i>           | .     | 1.1 | .   | +   | 1.1 | .     | .   | .    | .    | .   | III      | -   |
| <i>Lolium perenne</i>                 | .     | .   | 1.1 | +   | .   | .     | .   | .    | .    | .   | II       | -   |
| <b>Ch. Arrhenatheretalia</b>          |       |     |     |     |     |       |     |      |      |     |          |     |
| <i>Leucanthemum vulgare</i>           | +     | 2.2 | 2.2 | 2.2 | +   | .     | +   | +    | +    | +   | V        | IV  |
| <i>Taraxacum officinale</i>           | 2.1   | +   | 2.2 | 1.1 | 2.2 | +     | .   | +    | .    | .   | V        | II  |
| <i>Dactylis glomerata</i>             | .     | 1.1 | +   | +2  | 2.2 | 2.2   | 2.2 | +2   | +2   | 2.2 | IV       | V   |
| <i>Trisetum flavescens</i>            | .     | +   | +2  | 2.2 | 2.2 | .     | +2  | 1.2  | 1.1  | 1.2 | IV       | IV  |
| <i>Heracleum sphondylium</i>          | +     | 1.2 | .   | 1.1 | +2  | .     | +   | .    | .    | .   | IV       | I   |
| <i>Trifolium dubium</i>               | +     | .   | 1.1 | 1.2 | +2  | .     | .   | .    | .    | .   | IV       | -   |
| <b>Ch. Molinietalia</b>               |       |     |     |     |     |       |     |      |      |     |          |     |
| <i>Deschampsia caespitosa</i>         | 2.2   | 2.3 | 2.2 | 1.2 | 4.3 | +2    | 1.2 | 1.2  | 3.2  | 3.3 | V        | V   |
| <i>Lychnis flos-cuculi</i>            | +     | .   | 2.1 | +   | +   | 1.1   | +   | +    | +    | +   | IV       | V   |
| <i>Geranium palustre</i>              | .     | +   | .   | +   | 1.1 | .     | 2.2 | 1.2  | 2.2  | 2.2 | III      | IV  |
| <i>Cirsium oleraceum</i>              | 1.2   | +2  | .   | .   | .   | 1.2   | 1.2 | 2.3  | +    | 3.3 | II       | V   |
| <i>Equisetum palustre</i>             | .     | .   | 2.1 | +   | .   | .     | .   | 1.1  | +    | 1.1 | II       | III |
| <b>Ch. Molinio-Arrhenatheretea</b>    |       |     |     |     |     |       |     |      |      |     |          |     |
| <i>Rumex acetosa</i>                  | 2.1   | 1.1 | 2.1 | 2.2 | 2.2 | +     | 2.2 | 2.2  | 2.1  | 1.1 | V        | V   |
| <i>Lathyrus pratensis</i>             | 1.1   | 1.2 | +   | 1.1 | +   | .     | 2.2 | 1.2  | 1.1  | 2.2 | V        | IV  |
| <i>Veronica chamaedrys</i>            | +     | +   | 2.2 | 1.1 | +   | 1.1   | .   | 2.2  | 1.1  | 2.2 | V        | IV  |
| <i>Cerastium vulgatum</i>             | 1.1   | 1.1 | 2.1 | 2.2 | +   | 1.1   | .   | +    | 1.1  | .   | V        | III |
| <i>Festuca rubra</i>                  | 3.2   | +   | 3.2 | 2.2 | 1.2 | .     | .   | +2   | +2   | .   | V        | II  |

Table 2 (continued)

| Table No. of record              | 1     | 2   | 3   | 4   | 5   | 1'    | 2'  | 3'  | 4'  | 5'  |     |     |
|----------------------------------|-------|-----|-----|-----|-----|-------|-----|-----|-----|-----|-----|-----|
|                                  | ← a → |     |     |     |     | ← c → |     |     |     |     | a   | c   |
| <i>Plantago lanceolata</i>       | 1.1   | 1.1 | 2.2 | 2.2 | 1.1 | .     | +   | .   | .   | .   | V   | I   |
| <i>Prunella vulgaris</i>         | +     | +   | 1.1 | +   | +   | .     | .   | +   | .   | .   | V   | I   |
| <i>Alchemilla crinita</i>        | .     | 2.2 | +   | 1.2 | 2.2 | .     | 2.2 | 2.2 | 1.1 | 2.2 | IV  | IV  |
| <i>Alchemilla glabra</i>         | .     | 2.2 | +   | +   | 2.2 | .     | 1.2 | +   | 1.1 | 2.2 | IV  | IV  |
| <i>Ranunculus acris</i>          | 2.2   | 1.1 | 2.1 | .   | 1.1 | 1.1   | 2.2 | 1.1 | +   | .   | IV  | IV  |
| <i>Anthoxanthum odoratum</i>     | .     | +   | 2.1 | 2.1 | +   | .     | 1.1 | +   | +   | .   | IV  | III |
| <i>Festuca pratensis</i>         | 3.2   | .   | 1.1 | 1.2 | +   | 3.3   | .   | 3.3 | +   | .   | IV  | III |
| <i>Achillea millefolium</i>      | .     | +   | +   | +   | +   | +     | .   | .   | +   | .   | IV  | II  |
| <i>Agrostis capillaris</i>       | .     | +   | 1.2 | 1.2 | +   | .     | 1.2 | .   | .   | .   | IV  | I   |
| <i>Leontodon hispidus</i>        | .     | 1.1 | +   | +   | 1.1 | .     | +   | .   | .   | .   | IV  | I   |
| <i>Leontodon hispidus glabr.</i> | +     | .   | +   | 1.1 | +   | .     | .   | .   | .   | .   | IV  | -   |
| <i>Trifolium pratense</i>        | 1.2   | 2.2 | +2  | .   | +   | .     | .   | .   | .   | .   | IV  | -   |
| <i>Alopecurus pratensis</i>      | 2.2   | .   | 3.2 | 1.2 | .   | +2    | .   | 3.3 | 4.3 | .   | III | III |
| <i>Avenula pubescens</i>         | .     | 3.2 | .   | 1.1 | 1.1 | .     | 1.2 | .   | 2.2 | .   | III | II  |
| <i>Vicia cracca</i>              | +     | +   | +   | .   | .   | .     | 1.1 | .   | 1.1 | .   | III | II  |
| <i>Briza media</i>               | .     | 1.1 | .   | 2.1 | +   | .     | +   | .   | .   | .   | III | I   |
| <i>Bromus hordaceus</i>          | +     | .   | +   | +   | .   | .     | .   | .   | .   | .   | III | -   |
| <i>Luzula campestris</i>         | .     | +   | .   | 1.1 | +2  | .     | .   | .   | .   | .   | III | -   |
| <i>Poa trivialis</i>             | +     | .   | 2.2 | .   | .   | 2.2   | 3.3 | 4.3 | 3.3 | 3.3 | II  | V   |
| <i>Poa pratensis</i>             | .     | .   | +   | 2.1 | .   | .     | +   | .   | +   | 1.2 | II  | III |
| <i>Stellaria graminea</i>        | .     | .   | .   | +   | +   | .     | 2.2 | 1.1 | +   | .   | II  | III |
| <b>Other species</b>             |       |     |     |     |     |       |     |     |     |     |     |     |
| <i>Ranunculus repens</i>         | 2.2   | +   | 2.2 | +   | 3.2 | 3.3   | .   | 1.2 | 1.1 | .   | V   | III |
| <i>Plantago media</i>            | +     | 2.2 | +   | 3.3 | 2.2 | .     | +   | .   | .   | .   | V   | I   |
| <i>Carex hirta</i>               | 1.1   | +   | +2  | +   | +2  | .     | .   | .   | .   | .   | V   | -   |
| <i>Primula elatior</i>           | .     | +   | +   | +   | 2.1 | .     | 1.1 | 2.1 | +   | +   | IV  | IV  |
| <i>Equisetum arvense</i>         | +     | +   | .   | +   | +2  | +     | +   | .   | .   | .   | IV  | II  |
| <i>Lysimachia nummularia</i>     | +     | .   | +   | +   | +   | .     | 2.2 | 1.2 | .   | .   | IV  | II  |
| <i>Rhynchospora</i>              |       |     |     |     |     |       |     |     |     |     |     |     |
| <i>squarrosus</i> (d)            | .     | 2.2 | +   | 1.1 | +   | .     | .   | .   | +   | .   | IV  | I   |
| <i>Carex muricata</i>            | +2    | +   | +   | .   | +2  | .     | .   | .   | .   | .   | IV  | -   |
| <i>Plagiomnium elatum</i> (d)    | 1.1   | .   | 1.1 | 2.2 | 3.3 | .     | .   | .   | .   | .   | IV  | -   |
| <i>Galium vernum</i>             | .     | 1.1 | .   | +2  | 1.1 | .     | 2.2 | .   | +   | .   | III | II  |
| <i>Brachythecium</i>             |       |     |     |     |     |       |     |     |     |     |     |     |
| <i>rutabulum</i> (d)             | +     | .   | 1.1 | .   | .   | .     | .   | 1.2 | .   | .   | II  | I   |
| <i>Glechoma hederacea</i>        | +     | .   | .   | .   | +   | .     | .   | .   | .   | 1.2 | II  | I   |
| <i>Alchemilla glaucescens</i>    | .     | .   | +   | +   | .   | .     | .   | .   | .   | .   | II  | -   |
| <i>Brachythecium</i>             |       |     |     |     |     |       |     |     |     |     |     |     |
| <i>mildeanum</i> (d)             | .     | +   | .   | 1.1 | .   | .     | .   | .   | .   | .   | II  | -   |
| <i>Euphrasia rostkoviana</i>     | .     | +   | .   | +   | .   | .     | .   | .   | .   | .   | II  | -   |
| <i>Hieracium pilosella</i>       | .     | .   | +   | +   | .   | .     | .   | .   | .   | .   | II  | -   |
| <i>Medicago lupulina</i>         | +     | +   | .   | .   | .   | .     | .   | .   | .   | .   | II  | -   |
| <i>Plagiomnium</i>               |       |     |     |     |     |       |     |     |     |     |     |     |
| <i>cuspidatum</i> (d)            | .     | 2.2 | .   | .   | +   | .     | .   | .   | .   | .   | II  | -   |
| <i>Pimpinella saxifraga</i>      | .     | .   | .   | +   | +   | .     | .   | .   | .   | .   | II  | -   |
| <i>Hypericum maculatum</i>       | .     | .   | .   | +2  | +   | .     | +2  | .   | +2  | 1.2 | II  | III |

Table 2 (continued)

| Table No. of record       | 1     | 2 | 3 | 4 | 5 | 1'    | 2'  | 3'  | 4' | 5'  |   |    |
|---------------------------|-------|---|---|---|---|-------|-----|-----|----|-----|---|----|
|                           | ← a → |   |   |   |   | ← c → |     |     |    |     | a | c  |
| <i>Rumex obtusifolius</i> | +     | . | . | . | . | 3.4   | .   | .   | .  | +2  | I | II |
| <i>Galium aparine</i>     | .     | . | . | . | . | +2    | .   | 1.1 | +  | 1.1 | - | IV |
| <i>Urtica dioica</i>      | .     | . | . | . | . | +2    | 1.2 | +2  | +2 | 3.4 | - | V  |

**Sporadic species**  
*Ch. Arrhenatheretalia*: *Carum carvi* 1, *Pimpinella major* 2. *Ch. Molinietalia*: *Cirsium rivulare* 1, *Climacium dendroides* (d) 2, *Lotus uliginosus* 4', *Mentha longifolia* 1, 3' (1.1), *Myosotis scorpioides* 1', *Scirpus sylvaticus* 1, *Trollius europaeus* 3'. *Ch. Molinio-Arrhenatheretea*: *Agrostis stolonifera* 3', *Cardamine pratensis* 3', *Centaurea jacea* 2 (1.2), 2', *Holcus lanatus* 1, 2' (1.2), *Luzula multiflora* 3 (1.1), *Rhinanthus angustifolius* 1.  
 Other species: *Acer pseudoplatanus* 2', *Aegopodium podagraria* 5, 5', *Agropyron repens* 4 (+2), 4', *Alchemilla acutiloba* 4', *Alnus glutinosa* 5, *Anthriscus sylvestris* 1' (1.1), *Calliergonella cuspidata* (d) 1 (1.1), *Carex acuta* 1 (2.2), *C. nigra* 1, *C. ovalis* 3, *C. pallescens* 2, *C. sylvatica* 2', *Chaerophyllum aromaticum* 5, 1', *Cirriphyllum piliferum* (d) 5, 3', *Cirsium arvense* 1, 2', *Galium verum* 2' (2.3), *Eleocharis palustris* 1, *Geranium phaeum* 5 (+2), 5' (2.1), *Lolium multiflorum* 1' (1.1), *Myosotis sylvatica* 1, *Parnassia palustris* 2, *Phalaris arundinacea* 1, *Polygala comosa* 4, *Potentilla reptans* 1, 5', *Rosa* cfr. *canina* 2', *Rorippa sylvestris* 1, *Rumex crispus* 1, *Sagina procumbens* 3, *Salix caprea* 5, *Senecio jacobaea* 5, *Sinapis arvensis* 3, *Stellaria nemorum* 5' (1.2), *Thuidium philiberti* (d) 5, *Tripleurospermum inodorum* 1', *Vicia sepium* 5'.

**Trend II** (Table 2). Meadows belonging to the National Park administration, especially those situated in more remote valley areas, are being mown irregularly, once a year or even less often, the hay being left on the spot. Such a procedure, aimed to prevent the meadows becoming overgrown by shrubs and trees, is equivalent to a very intensive organic fertilization (composting) of the soil. The organic matter deposited on the meadow (estimated as 5-8 t/ha/year) by far exceeds all the fertilizer doses used by the farmers. Accordingly, the general trend in vegetation change here is similar to that of the meadows intensively fertilized with mineral compounds, but goes still much further. This is especially evident in the impoverishment of the floristic composition (decrease in average species number from 57 to 34; loss of 43.5% of formerly recorded species, increase by 15.8% of new species, net result 27.7% of species impoverishment). The sharp decrease in the share of characteristic species of association, alliance and order has to be especially emphasized, and the total elimination from the ground layer of the pasture elements (of the *Cynosurion* alliance). On the other hand, the share of hygrophilous

grasses markedly increased (especially with regard to *Poa trivialis*, which became dominant in numerous stands). Very abundant became also the ubiquitous dicotyledonous nitrophytes: *Urtica dioica*, *Galium aparine* and *Rumex obtusifolius*. Mean Ellenberg ecological indices confirm a marked increase in assimilable nitrogen and soil humidity, as well as slight increase in soil pH. In spite of such profound modifications the stands under discussion still retain the general features of fresh hay-meadows and may be classified as extremely impoverished ("truncated") communities ("Rumpfgesellschaften") of the *Arrhenatheretalia* order.

**Trend III** (Table 3). Quite a few less accessible meadows on forest edges and rivulet banks have come into complete disuse. This has caused the most radical vegetation changes. However, the expected encroachment by the potential natural forest vegetation is not yet clearly visible. Instead of this, a fairly stable community of tall-forbs developed, dominated by *Urtica dioica* and *Cirsium oleraceum*, and strikingly poor in species (10-25 species per 100 m<sup>2</sup>, average: 17 species instead of the initial number of 56 species). As much as 62.5% of species of the former *Arrhenatheretum* have been lost, only 21.9% of new species emerged, and the net floristic impoverishment culminated at 40.6%. The Ellenberg ecological indices prove a very high increase in assimilable nitrogen, a marked increase in humidity and a high increase in soil pH. Nitrophilous tall-forb communities, similar to that of *Urtica dioica* and *Cirsium oleraceum* in the Ojcow area, have already been described from the forest edges by many authors ("nitrophile Saumgesellschaften" DIERSCHKE 1974, HILBIG et al. 1972, KOPECKY and HEJNY 1971, OBERDORFER 1983, WILMANN 1984). They have been called *Urtico-Aegopodietum podagrariae* (Tx. 1963) Oberd. 1964, and included in the higher syntaxa of *Aegopodion podagrariae* Tx. 1967, *Galio-Alliarietalia* (Tx. 1950) Oberd. 1967 or *Glechometalia* Tx. in Tx. et Brun Hol 1972, and *Galio-Urticetea* Passarge 1967 em. Kopecky 1969. Changes of the same type as those discussed for the *Arrhenatheretum medioeuropaeum* have also been noticed in fertile pastures (*Lolio-Cynosuretum*) in the Ojcow area. Lack of grazing resulted also in this case in the development of the nitrophilous *Urtica dioica-Cirsium oleraceum* community. On the contrary, the humid meadows (*Cirsietum rivularis*) remained nearly unchanged until recently.







Table 3 (continued)

| Table No. of record             | 1              | 2  | 3 | 4              | 5 | 1'  | 2'   | 3'  | 4'  | 5'  | 6   | 7   | 8   | 9   | 10  | a  | d   |
|---------------------------------|----------------|----|---|----------------|---|-----|------|-----|-----|-----|-----|-----|-----|-----|-----|----|-----|
| <i>Carex muricata</i>           | .              | +2 | . | +              | . | .   | .    | .   | .   | .   | .   | .   | .   | .   | .   | II | -   |
| <i>Euphrasia rostkoviana</i>    | .              | +  | . | +              | . | .   | .    | .   | .   | .   | .   | .   | .   | .   | .   | II | -   |
| <i>Hypericum maculatum</i>      | +              | .  | . | +              | . | .   | .    | .   | .   | .   | .   | .   | .   | .   | .   | II | -   |
| <i>Aegopodium podagraria</i>    | + <sup>0</sup> | .  | . | + <sup>0</sup> | . | +   | +    | .   | +   | +   | .   | .   | 1.2 | .   | .   | II | IV  |
| <i>Ranunculus repens</i>        | +              | .  | . | +              | . | 2.2 | 1.2  | 2.2 | 2.2 | +   | .   | .   | .   | .   | .   | II | III |
| <i>Galium aparine</i>           | +              | .  | . | .              | . | 1.1 | +    | .   | +   | 1.1 | 1.1 | 1.1 | 1.1 | 1.1 | 1.1 | I  | V   |
| <i>Geranium phaeum</i>          | +              | .  | . | .              | . | .   | +    | .   | 1.1 | 1.1 | 1.1 | +   | .   | +   | +   | I  | IV  |
| <i>Agropyron repens</i>         | +              | .  | . | .              | . | 2.2 | .    | .   | .   | .   | +   | +   | 2.2 | 1.2 | 2.3 | I  | III |
| <i>Urtica dioica</i>            | .              | .  | . | .              | . | 3.3 | 5.5  | 4.4 | 4.4 | 5.5 | 3.3 | 3.3 | 4.4 | 5.5 | 4.4 | -  | V   |
| <i>Asperula rivalis</i>         | .              | .  | . | .              | . | 2.2 | .    | .   | .   | .   | 3.3 | .   | 2.2 | 2.2 | +2  | -  | III |
| <i>Chaerophyllum aromaticum</i> | .              | .  | . | .              | . | +   | .    | .   | .   | .   | 4.4 | 2.2 | 1.2 | +2  | 1.2 | -  | III |
| <i>Rumex obtusifolius</i>       | .              | .  | . | .              | . | 3.3 | +2   | +2  | +2  | .   | .   | 1.1 | 2.3 | .   | .   | -  | III |
| <i>Stellaria nemorum</i>        | .              | .  | . | .              | . | .   | 1.1  | .   | .   | 1.1 | .   | +   | .   | +   | +   | -  | III |
| <i>Carduus crispus</i>          | .              | .  | . | .              | . | +   | .    | .   | .   | .   | .   | +   | +   | .   | +   | -  | II  |
| <i>Lamium maculatum</i>         | .              | .  | . | .              | . | 1.1 | 1.1. | .   | .   | .   | .   | 1.1 | .   | .   | 1.1 | -  | II  |
| <i>Phalaris arundinacea</i>     | .              | .  | . | .              | . | +3  | .    | .   | .   | .   | .   | .   | .   | +2  | +2  | -  | II  |

**Sporadic species**  
*Ch. Moliniatalia: Filipendula ulmaria* 2, 8 (1.2), *Petasites hybridus* 1, 1' (+.2).  
*Ch. Molinio-Arrhenatheretea: Agrostis stolonifera* 1, *Centaurea jacea* 5, *Stellaria graminea* 5, 3' (+.2), 4' (1.2).  
Other species: *Acer pseudoplatanus* 3, 3' (1.1), *Alchemilla subcrenata* 2, *A. xantochlora* 1, *Alnus glutinosa* 3', *Anthriscus sylvestris* 6, *Arctium tomentosum* 7 (+.2), *Brachythecium rutabulum* (d) 5 (1.1), 5' (3.3), *Bromus benekenii* 10, *Calligonella cuspidata* (d) 2, *Carex brizoides* 4, *Cerastium arvense* 3 (+.2), *Chaerophyllum hirsutum* 9, 10, *Cirriphyllum piliferum* (d) 2, *Cirsium arvense* 1, *Convolvulus arvensis* 2, *Fraxinus excelsior* 2', *Geum urbanum* 7, *Hieracium pilosella* 4, *Impatiens noli-tangere* 9, *Impatiens parviflora* 7, *Linum cathartica* 5, *Plagiomnium undulatum* (d) 5', *Potentilla reptans* 1, *Sinapis arvensis* 2, *Stachys sylvatica* 8, *Tanacetum vulgare* 8 (+.2), *Thuidium philiberti* (d) 4, *Tussilago farfara* 1, *Vicia sepium* 1.

#### 4. CONCLUSIONS

Modifications of management practices in the valley bottoms of the Ojcow National Park caused notable shifts in the share and distribution patterns of various community types (Table 4). The area of riverine forest remnants (*Alno-Padion*) decreased nearly by half. The total areas of greenland increased by 1 1/2. However, a large majority of it is presently formed of highly disturbed and impoverished (truncated) stands. Normally developed *Arrhenatheretum* maintained only 1/3 of its former area, and the pastures of *Lolio-Cynosuretum* only 1/10. As a new element the tall forb community of *Urtica dioica-Cirsium oleraceum* emerged, not recorded 30 years ago. It now occupies 1/5 of the valley bottoms. The decrease by nearly 2/5 of the arable fields is also notable. They are being continuously transformed into grassland (as proved by the presence of new fallow land). The general balance of all these processes is an ever more pronounced impoverishment of the flora and fauna

**Table 4.** Changes in areas occupied by various types of plant communities on valley bottoms in the Ojcow National Park during the last 30 years.

| Plant communities                                      | 1959-1961    |               | 1988         |               |
|--|--------------|---------------|--------------|---------------|
|  | ha           | %             | ha           | %             |
| <b>Natural vegetation</b>                              | <b>7.99</b>  | <b>11.48</b>  | <b>5.09</b>  | <b>7.32</b>   |
| <i>Alno-Padion</i> fragm.                              | 6.62         | 9.51          | 3.01         | 4.32          |
| <i>Geranio-Petasitetum hybridi</i>                     | 0.11         | 0.16          | 0.46         | 0.67          |
| <i>Scirpo-Phragmitetum</i>                             | 0.21         | 0.30          | 0.25         | 0.36          |
| open waters - ponds                                    | 1.05         | 1.51          | 1.37         | 1.97          |
| <b>Semi-natural vegetation</b>                         | <b>35.12</b> | <b>50.51</b>  | <b>52.91</b> | <b>76.08</b>  |
| <i>Calthion</i>  | 0.39         | 0.56          | 0.83         | 1.19          |
| <i>Calthion/Arrhenatherion</i>                         | 2.39         | 3.44          | 1.90         | 2.73          |
| <i>Arrhenatheretum medioeuropaeum</i>                  | 14.47        | 20.81         | 4.86         | 6.98          |
| <i>Arrhenatheretum</i> with <i>Cirsium oleraceum</i>   | -            | -             | 4.01         | 5.76          |
| <i>Arrhenatheretalia</i> fragm.                        | 3.52         | 5.06          | 20.88        | 30.03         |
| <i>Arrhenatheretum</i> / comm. of <i>Urtica dioica</i> | -            | -             | 0.38         | 0.54          |
| community of <i>Urtica dioica</i>                      | -            | -             | 14.55        | 20.93         |
| <i>Lolio-Cynosuretum</i>                               | 10.05        | 14.46         | 1.14         | 1.65          |
| <i>Lolio-Cynosuretum</i> fragm.                        | 4.30         | 6.18          | 4.36         | 6.27          |
| <b>Synanthropic vegetation</b>                         | <b>26.44</b> | <b>38.01</b>  | <b>11.55</b> | <b>16.60</b>  |
| arable fields and built over areas                     | 26.44        | 38.01         | 11.14        | 16.02         |
| fallow land  | -            | -             | 0.41         | 0.58          |
| <b>Total</b>   | <b>69.55</b> | <b>100.00</b> | <b>69.55</b> | <b>100.00</b> |

(especially the entomofauna) of the Park, and an ever more pronounced decrease of the landscape value. Reversing these trends represents certainly the most important task of nature conservation in the Ojcow area (MICHALIK 1985).

## SUMMARY

Secondary hay meadows (*Arrhenatheretum medioeuropaeum*), which dominated 30 years ago on valley bottoms in the Ojcow National Park, became highly modified during the last years due to far-going changes in the management practices. In places where hay is still being harvested and the meadows are being intensively fertilized, impoverished stands of *Arrhenatheretum* still exist. In places where the meadows are being mown to prevent the forest encroachment, but the hay is being left on the spot, "truncated" communities of the *Arrhenatheretalia* order developed. In meadows completely abandoned, nitrophilous tall forb community, dominated by *Urtica dioica* and *Cirsium oleraceum*, was formed. These changes result in a drastic reduction of the floristic and faunistic diversity of the Park.

## REFERENCES

- ANON., 1987: Blumenreiche Heumatten. Empfehlungen des Kantons Solothurn für die Erhaltung artenreicher Wiesen im Solothurner Jura. Bau-Landw.-Departement des Kantons Solothurn, Solothurn. 16 p.
- BAKKER J.P., 1987: Restoration of species-rich grassland after a period of fertilizer application. In: ANDEL J.V., BAKKER J.P. and SNAYDON R.W. (eds.), Disturbance in grasslands: causes, effects and processes. Junk, Dordrecht. 185-200.
- DIERSCHKE H., 1974: Saumgesellschaften im Vegetations- und Standortgefälle an Waldrändern. Scripta Geobot. 6, 1-246.
- DIERSCHKE H., 1978: Monokultur - Monotonie? Naturopa 31, 29-32.
- DIERSCHKE H., 1980: Erstellung eines Pflegeplanes für Wiesenbrachen des Westharzes auf pflanzensoziologischer Grundlage. Verh.Ges.Ökol. 8, 205-212.
- HILBIG W., HEINRICH W. and NIEMANN E., 1972: Übersicht über die Pflanzengesellschaften des südlichen Teiles der DDR. IV. Nitrophile Saumgesellschaften. Hercynia 9, 229-270.
- HOPKINS A. and WAINWRIGHT J., 1989: Changes in botanical composition and agricultural management of enclosed grassland in upland areas of England and Wales, 1970-86, and some conservation implications. Biol.Conservation 47, 219-235.
- HUGHES J. and HUNTLEY B., 1988: Upland hay meadows in Britain - their vegetation, management and future. In: BIRKS H.H., BIRKS H.J.B., KALAND P.E. and MOE D. (eds.), The cultural landscape - past, present and future. Cambridge Univ.Press, Cambridge. 91-110.
- HUNDT F., 1964: Die Bergwiesen des Harzes, Thüringer Waldes und Erzgebirges. Pflanzensoziologie 14, 1-284.
- JANKOWSKA K., 1967: Seasonal changes of vegetation and net primary production of the fresh meadow *Arrhenatheretum elatioris*. (In Polish with English summary). Stud.Nat. A 1, 153-173.
- JANKOWSKA K., 1971: Net primary production during a three-year succession on an unmown meadow of the *Arrhenatheretum elatioris* plant association. Bull.Acad.Polon. Sci., Sér.Sci.Biol. 19(12), 789-794.
- JANKOWSKA K., 1975: The ecology and primary production of the fresh meadow in the Oj-

- cow National Park and of the xerothermic grassland in the Skowronno steppe reserve near Pinczow. (In Polish with English summary). Stud.Nat. A, 11, 1-79.
- JANKOWSKA K. and WITKOWSKI Z., 1978: Succession studies of plants and weevils (*Coleoptera, Curculionidae*) on an unmown meadow *Arrhenatherum elatioris* in the Ojcow National Park. Phytocenosis 7(1/2, 3/4), 333-350.
- KOPECKY K. and HEJNY S., 1971: Nitrophile Saumgesellschaften mehrjähriger Pflanzen Nordost- und Mittelböhmens. (In Czech with German summary). Rozpr.Ceskoslov.Akad.Ved 81(9), 1-126.
- KORNAS J. and DUBIEL E., (in print): Changes of vegetation of the hay-meadows in the Ojcow National Park (S Poland) during the last 30 years. Phytocoenosis, Suppl.Car-togr.Geobot.
- LOSVIK M.H., 1988: Phytosociology and ecology of old hay meadows in Hordaland, western Norway in relation to management. Vegetatio 78, 157-187.
- MEDWECKA-KORNAS A., 1962: What was the origin of the map of the vegetation growing in the Ojcow National Park and what can be learned from it. (In Polish with English summary). Chronmy Przyr. Ojczysta 18(4), 3-12, 57-58.
- MEDWECKA-KORNAS A., 1977a: Ecological problems in the conservation of plant communities with special reference to Central Europe. Environm.Conserv. 4(1), 27-33.
- MEDWECKA-KORNAS A., 1977b: Plant communities. In: ZABIEROWSKI K. (ed.), The nature of the Ojcow National Park. (In Polish with English summary). Stud.Nat. B 28, 199-235.
- MEDWECKA-KORNAS A. and KORNAS J., 1963a: Vegetation map of the Ojcow National Park. (In Polish with English summary). Ochr.Przyr. 29, 17-87.
- MEDWECKA-KORNAS A. and KORNAS J., 1963b: Plant communities of the Ojcow National Park (Southern Poland) and their successions. Bull.Acad.Polon.Sci.,Ser.Sci.Biol. 11(7), 353-355.
- MEDWECKA-KORNAS A. and KORNAS J., 1963c: Potential natural vegetation of the Ojcow National Park (Southern Poland). Bull.Acad.Polon.Sci., Ser.Sci.Biol. 11(7), 357-359.
- MEISEL K., 1983: Zum Nachweis von Grünlandveränderungen durch Vegetationserhebungen. Tuexenia 3, 407-415.
- MEISEL K. and HÜBSCHMANN A.V., 1976: Veränderungen der Acker- und Grünlandvegetation im nordwestdeutschen Flachland in jüngerer Zeit. Schriftenreihe Vegetationsk. 10, 109-124.
- MICHALIK S., 1985: Active ecological protection of biocenoses and landscape in the Ojcow National Park. (In Polish with English summary). Parki Nar.Rezerwaty Przyr. w Polsce, 6(2), 43-56.
- NEUHÄUSL R. and NEUHÄUSLOVA Z., 1985: Verstaudung auf aufgelassenen Rasen am Beispiel von *Arrhenatherion*-Gesellschaften. Tuexenia 5, 247-258.
- NORDENHAUG A., 1988: Studies of remaining species-rich hay meadows in Norway. In: BIRKS H.H., BIRKS H.J.B., KALAND P.E. and MOE D. (eds.), The cultural landscape - past, present and future. Cambridge Univ.Press, Cambridge. 477-488.
- OBERDORFER E. (Hrsg.), 1983: Süddeutsche Pflanzengesellschaften. (2. Aufl.). Teil 3. VEB Fischer, Jena. 455 p.
- OOMES M.J.M. and MOOI H., 1981: The effect of cutting and fertilizing on the floristic composition and production of an *Arrhenatherion elatioris* grassland. Vegetatio 46/47 (11), 233-239.
- ROSENTHAL G. and MÜLLER J., 1988: Wandel der Grünlandvegetation im mittleren Ostetal - ein Vergleich 1952-1987. Tuexenia 8, 79-99.
- SCHMID W. and THOMET P., 1986: Unsere Naturwiesen im Spannungsfeld zwischen Landwirtschaft und Naturschutz. Schweiz.Landw.Monatsh. 64, 325-331.
- WEGENER U. and REICHHOFF L., 1989: Zustand, Entwicklungstendenzen und Pflege der Bergwiesen. Hercynia 26, 190-198.

- WILMANN O., 1984: Ökologische Pflanzensoziologie. (3. Aufl.). Quelle & Meyer, Heidelberg. 372 p.
- WITKOWSKI Z., 1969: The community of weevils (*Coleoptera, Curculionidae*) on the mown and unmown meadow in the Ojcow National Park. (In Polish with English summary). *Ochr.Przyr.* 34, 185-204.
- WOLF G., 1979: Veränderungen der Vegetation und Abbau der organischen Substanz in aufgegebenen Wiesen des Westerwaldes. *Schriftenreihe Vegetationsk.*, 13, 1-117.
- ZOLLER H., STRUBIN S. and AMIET T., 1983: Zur aktuellen Verbreitung einiger Arten der Glatthaferwiese. *Bot.Helv.* 93, 221-238.

Address of the authors: Prof. Dr. Jan KORNAS  
Dr. Eugeniusz DUBIEL  
Institute of Botany  
Jagiellonian University  
Lubicz 46  
31-512 Krakow, Poland