

Figures

Objektyp: **Appendix**

Zeitschrift: **Entomologica Basiliensia et Collectionis Frey**

Band (Jahr): **35 (2016)**

PDF erstellt am: **22.06.2024**

Nutzungsbedingungen

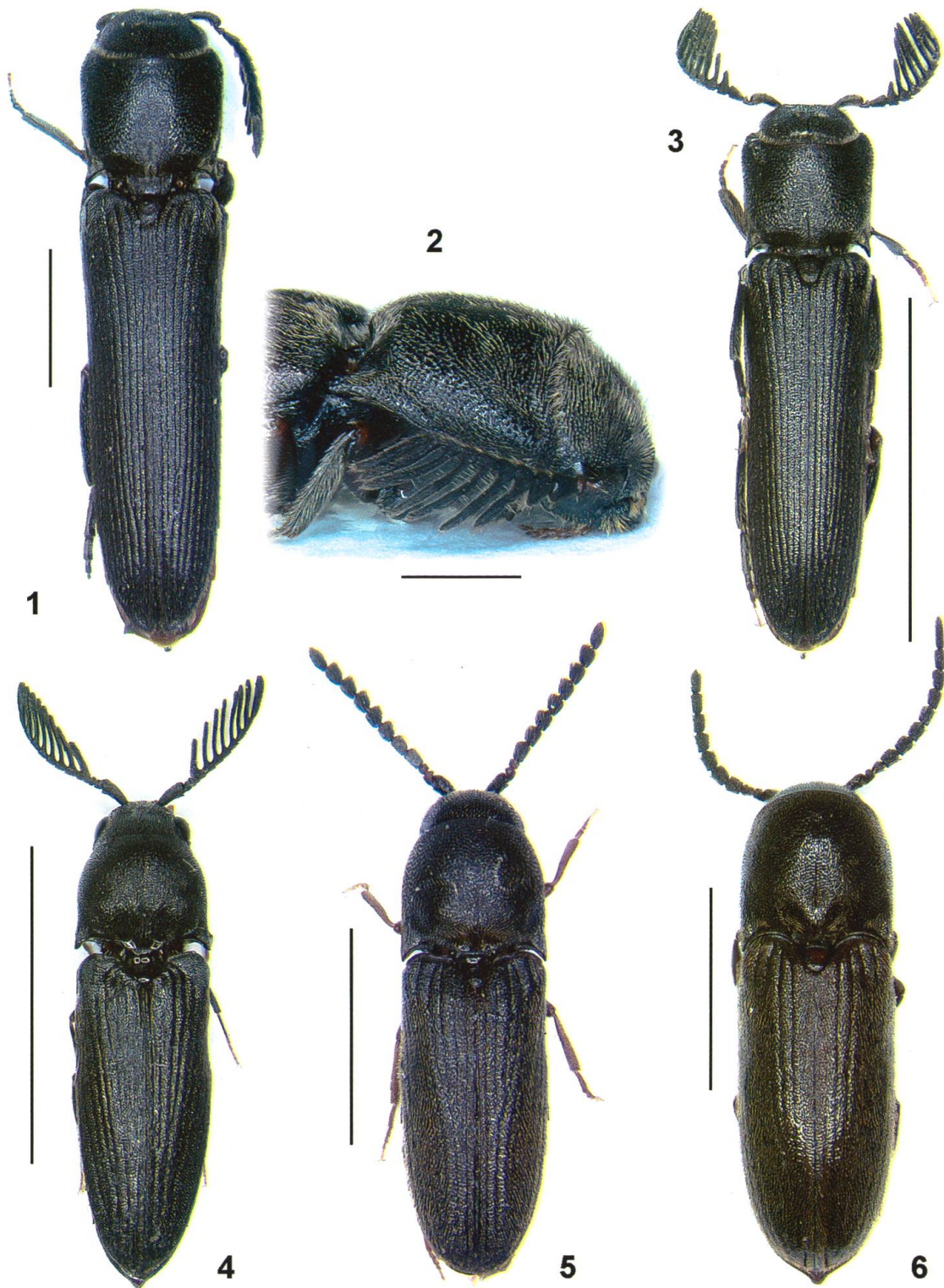
Die ETH-Bibliothek ist Anbieterin der digitalisierten Zeitschriften. Sie besitzt keine Urheberrechte an den Inhalten der Zeitschriften. Die Rechte liegen in der Regel bei den Herausgebern.

Die auf der Plattform e-periodica veröffentlichten Dokumente stehen für nicht-kommerzielle Zwecke in Lehre und Forschung sowie für die private Nutzung frei zur Verfügung. Einzelne Dateien oder Ausdrucke aus diesem Angebot können zusammen mit diesen Nutzungsbedingungen und den korrekten Herkunftsbezeichnungen weitergegeben werden.

Das Veröffentlichen von Bildern in Print- und Online-Publikationen ist nur mit vorheriger Genehmigung der Rechteinhaber erlaubt. Die systematische Speicherung von Teilen des elektronischen Angebots auf anderen Servern bedarf ebenfalls des schriftlichen Einverständnisses der Rechteinhaber.

Haftungsausschluss

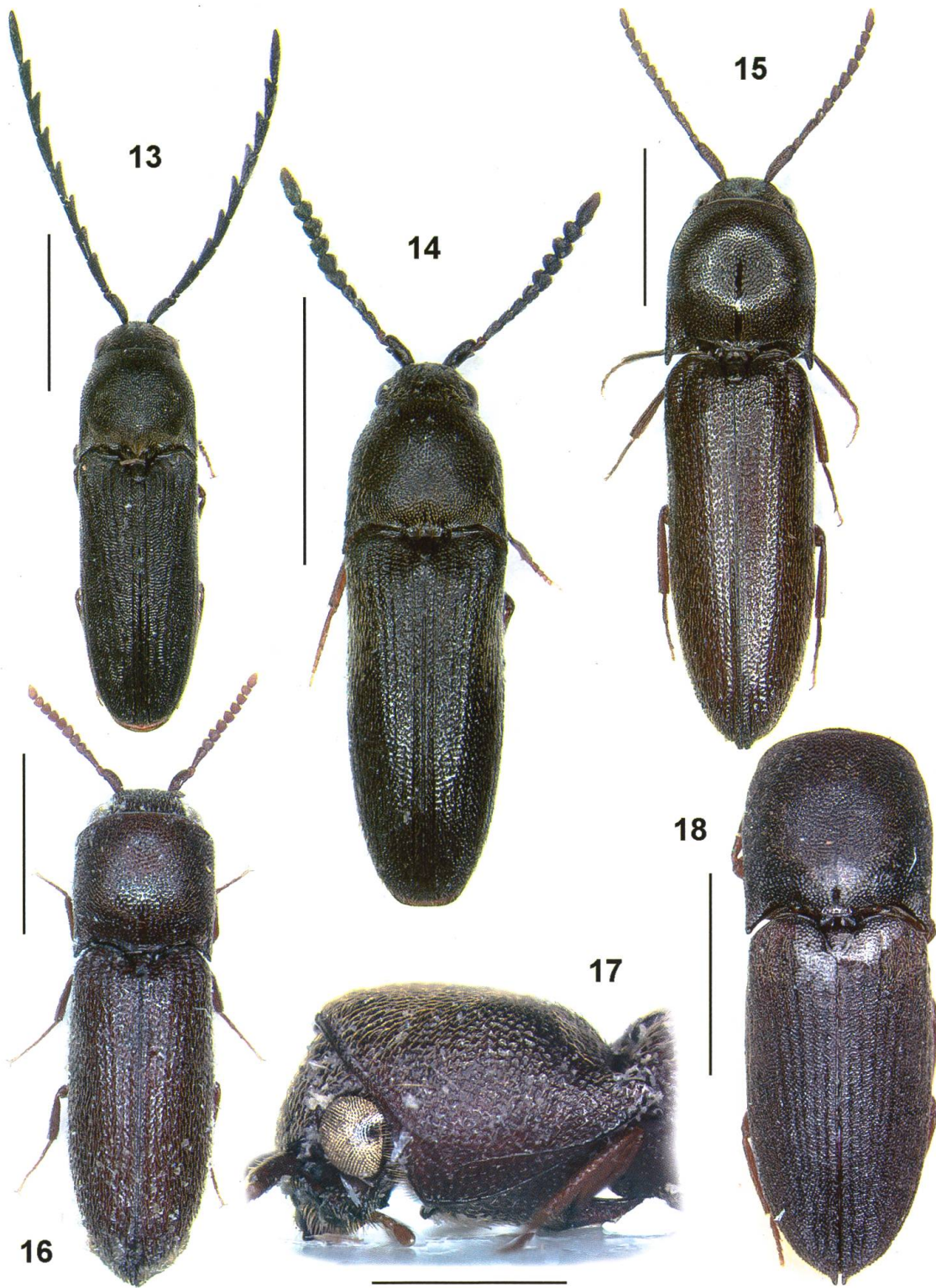
Alle Angaben erfolgen ohne Gewähr für Vollständigkeit oder Richtigkeit. Es wird keine Haftung übernommen für Schäden durch die Verwendung von Informationen aus diesem Online-Angebot oder durch das Fehlen von Informationen. Dies gilt auch für Inhalte Dritter, die über dieses Angebot zugänglich sind.



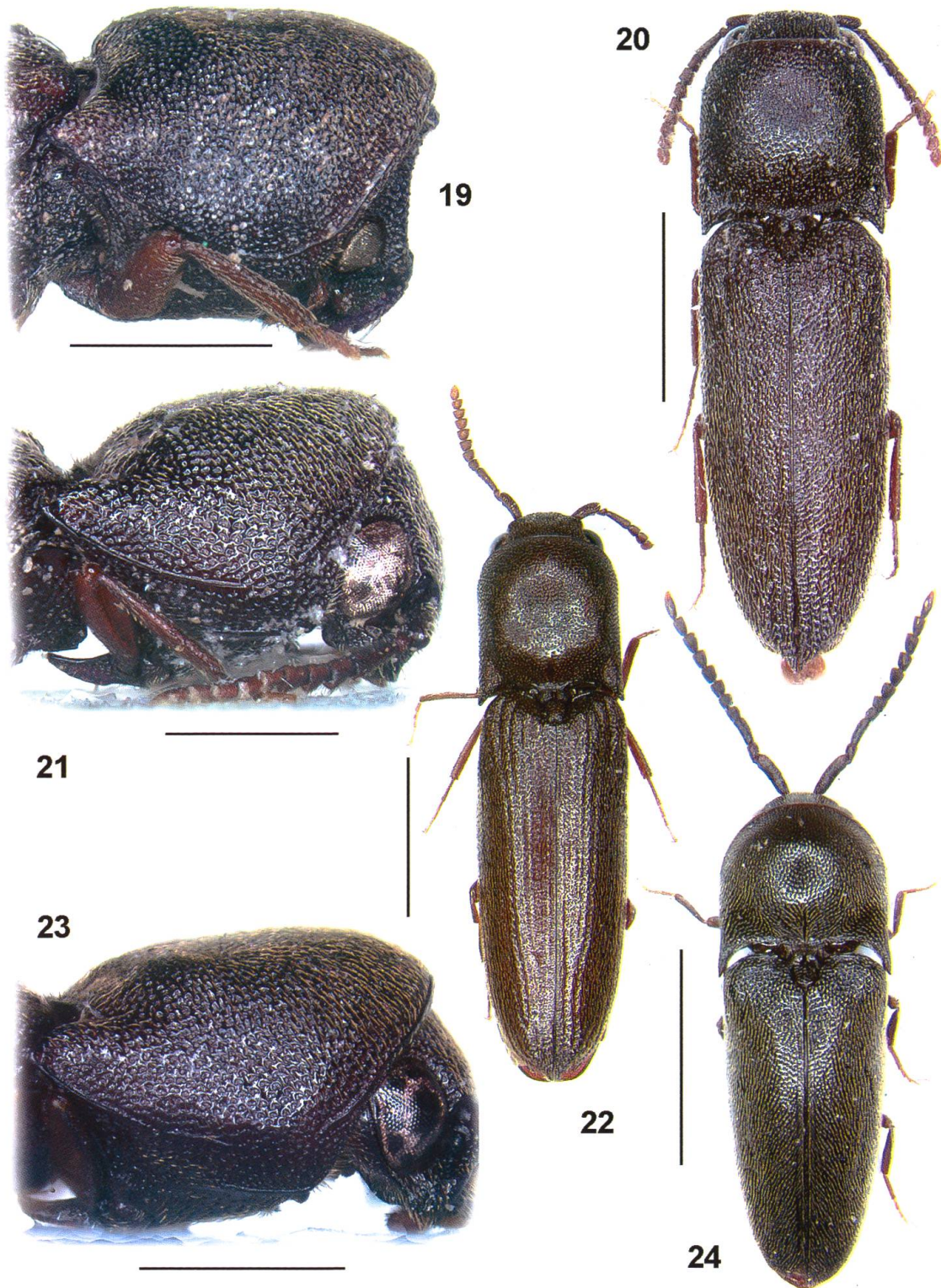
Figs 1–6. Eucnemidae from Laos: 1–2 – *Melasis balwanti* ♂ non type BMNH; 3 – *Melasis bringchangii* ♂ non type BMNH; 4 – *Otho coomani* ♂ non type BMNH; 5 – *Xylophilus hylocharoides* ♀ holotype NHMB; 6 – *Xylophilus laosianus* ♂ holotype BMNH. Dorsal habitus: 1, 3–6. Oblique frontal view: 2. (Scale 2 = 1.0 mm; 1, 5–6 = 2.0 mm; 3–4 = 5.0 mm.)



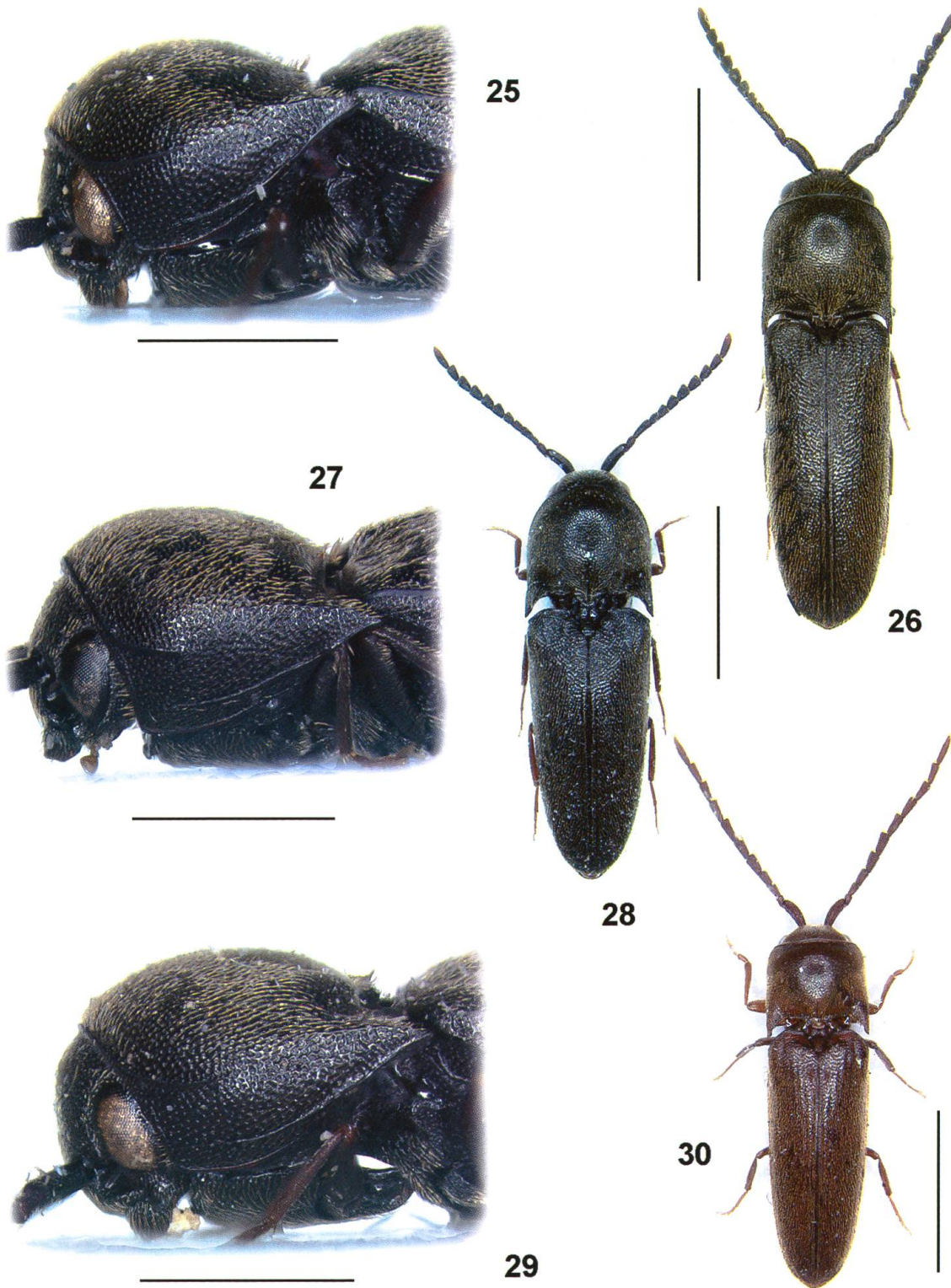
Figs 7–12. Eucnemidae from Laos: 7 – *Saproxylobius crassicollaris* ♂ non type AAC; 8 – *Bioxylylus bakeri* ♂ non type NHMB; 9 – *Bioxylylus barclayi* ♂ holotype BMNH; 10 – *Bioxylylus castaneus* ♂ holotype BMNH; 11 – *Bioxylylus granulatus* ♂ holotype NHMB; 12 – *Proxylobius gardneri* ♂ non type NHMB. Dorsal habitus: 7–12. (Scale = 2.0 mm.)



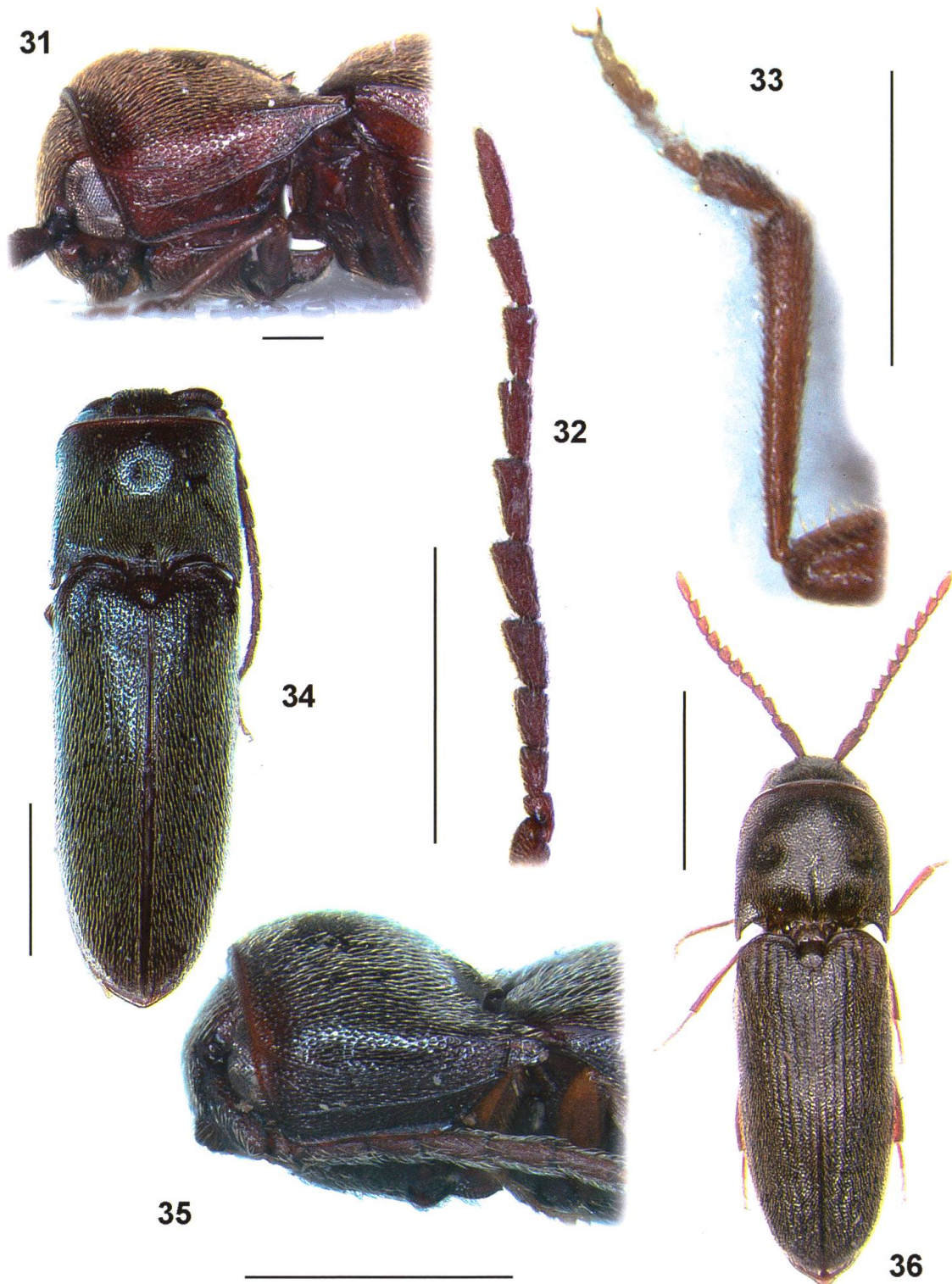
Figs 13–18. Eucnemidae from Laos: 13 – *Proxylobius orientalis* ♂ non type BMNH; 14 – *Hylis parallelus* ♀ holotype BMNH; 15 – *Farsus salvazai* ♂ non type BMNH; 16–17 – *Arrhipis capucina* ♀ non type NHMB; 18 – *Arrhipis cavifrons* ♂ non type BMNH. Dorsal habitus: 13–16, 18. Lateral view: 17. (Scale 17 = 1.0 mm; 13–16, 18 = 2.0 mm.)



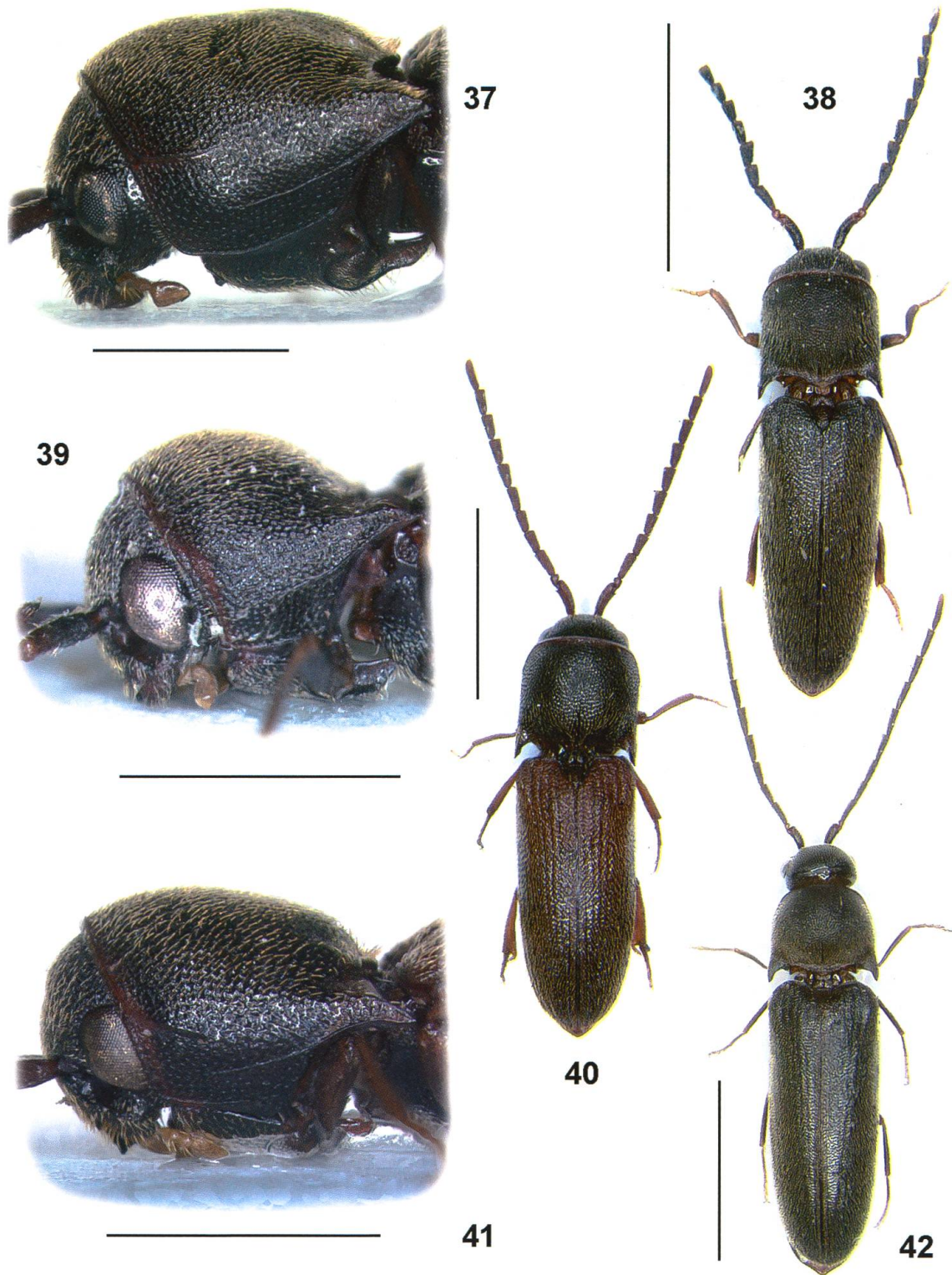
Figs 19–24. Eucnemidae from Laos: 19 – *Arrhipis cavifrons* ♂ non type BMNH; 20–21 – *Arrhipis orientalis* ♀ non type GERP; 22–23 – *Arrhipis striata* ♂ non type GERP; 24 – *Balistica cuneiforma* ♀ holotype NHMB. Dorsal habitus: 20, 22, 24. Lateral view: 19, 21, 23. (Scale 19, 21, 23 = 1.0 mm; 20, 22, 24 = 2.0 mm.)



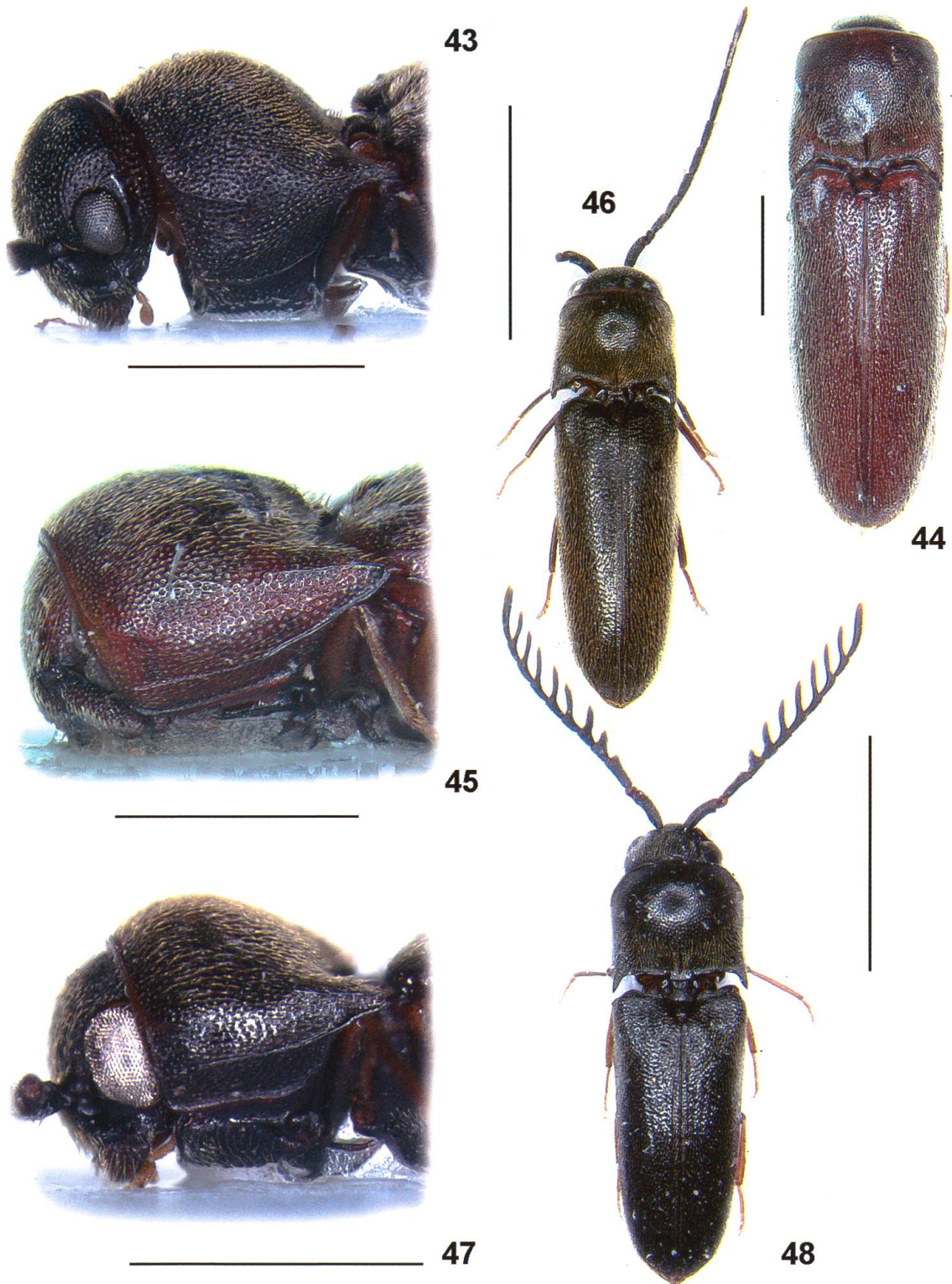
Figs 25–30. Eucnemidae from Laos: 25 – *Balistica cuneiforma* ♀ holotype NHMB; 26–27 – *Balistica distincta* ♀ non type BMNH; 28–29 – *Balistica vicina* non type GERP; 30 – *Brevisegmentus miyatakei* ♂ non type NHMB. Dorsal habitus: 26, 28, 30. Lateral view: 25, 27, 29. (Scale 25, 27, 29 = 1.0 mm; 26, 28, 30 = 2.0 mm.)



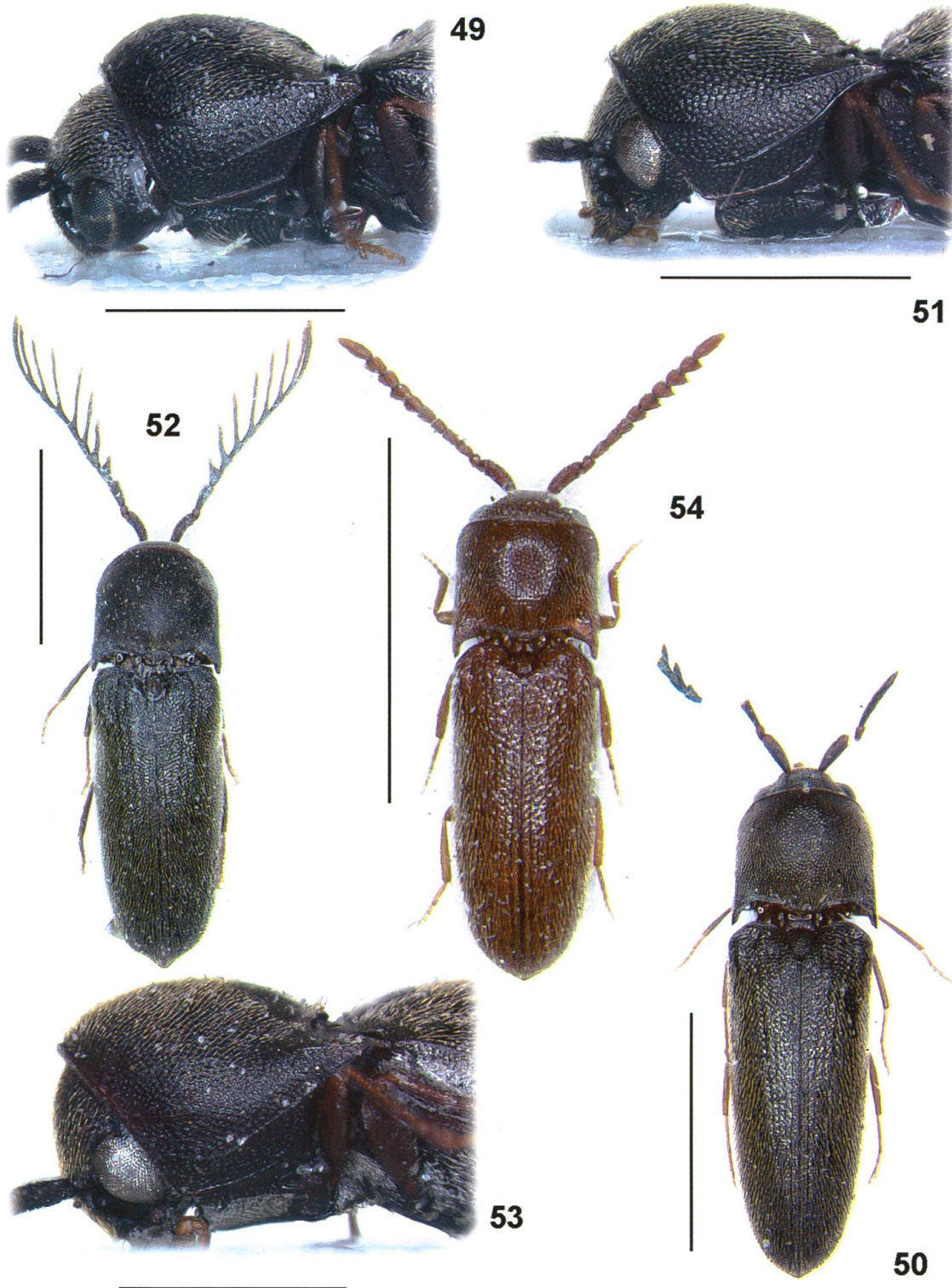
Figs 31–36. Eucnemidae from Laos: 31–33 – *Brevisegmentus miyatakei* ♂ non type NHMB; 34–35 – *Entomophthalmus coomani* ♀ non type JMC; 36 – *Rhagomicrus cylindriformis* ♀ holotype BMNH. Antenna: 32. Prothoracic tarsomere I: 33. Dorsal habitus: 34, 36. Lateral view: 31, 35. (Scale 33 = 0.5 mm; 31–32, 34–35 = 1.0 mm; 36 = 2.0 mm.)



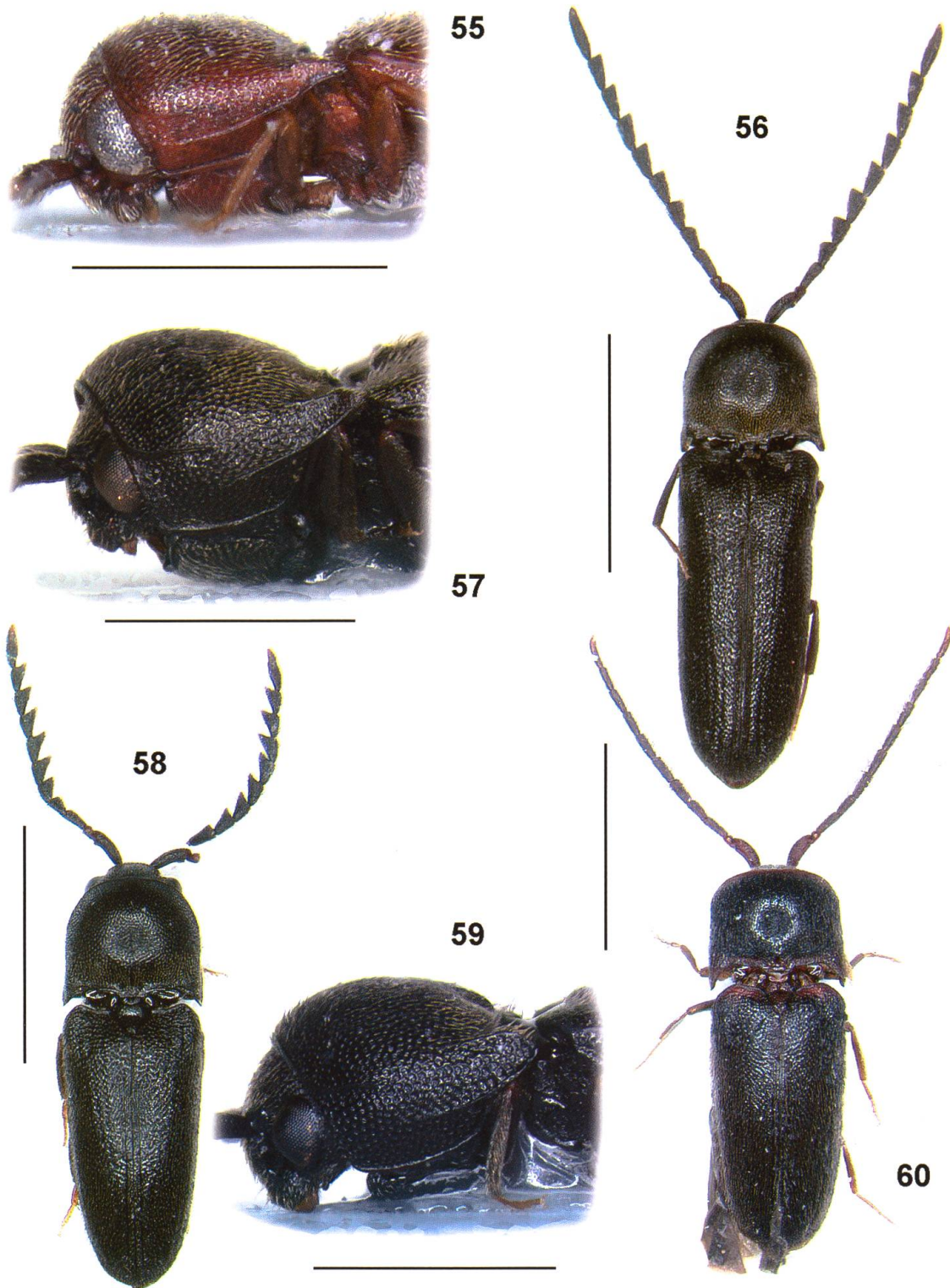
Figs 37–42. Eucnemidae from Laos: 37 – *Rhagomicrus cylindriformis* ♀ holotype BMNH; 38–39 *Rhagomicrus haucki* ♂ holotype NHMB; 40–41 – *Rhagomicrus tibialis* ♂ holotype BMNH; 42 – *Siniugum huaphanensis* ♂ holotype BMNH. Dorsal habitus: 38, 40, 42. Lateral view: 37, 39, 41. (Scale 37, 39, 41 = 1.0 mm; 38, 40, 42 = 2.0 mm.)



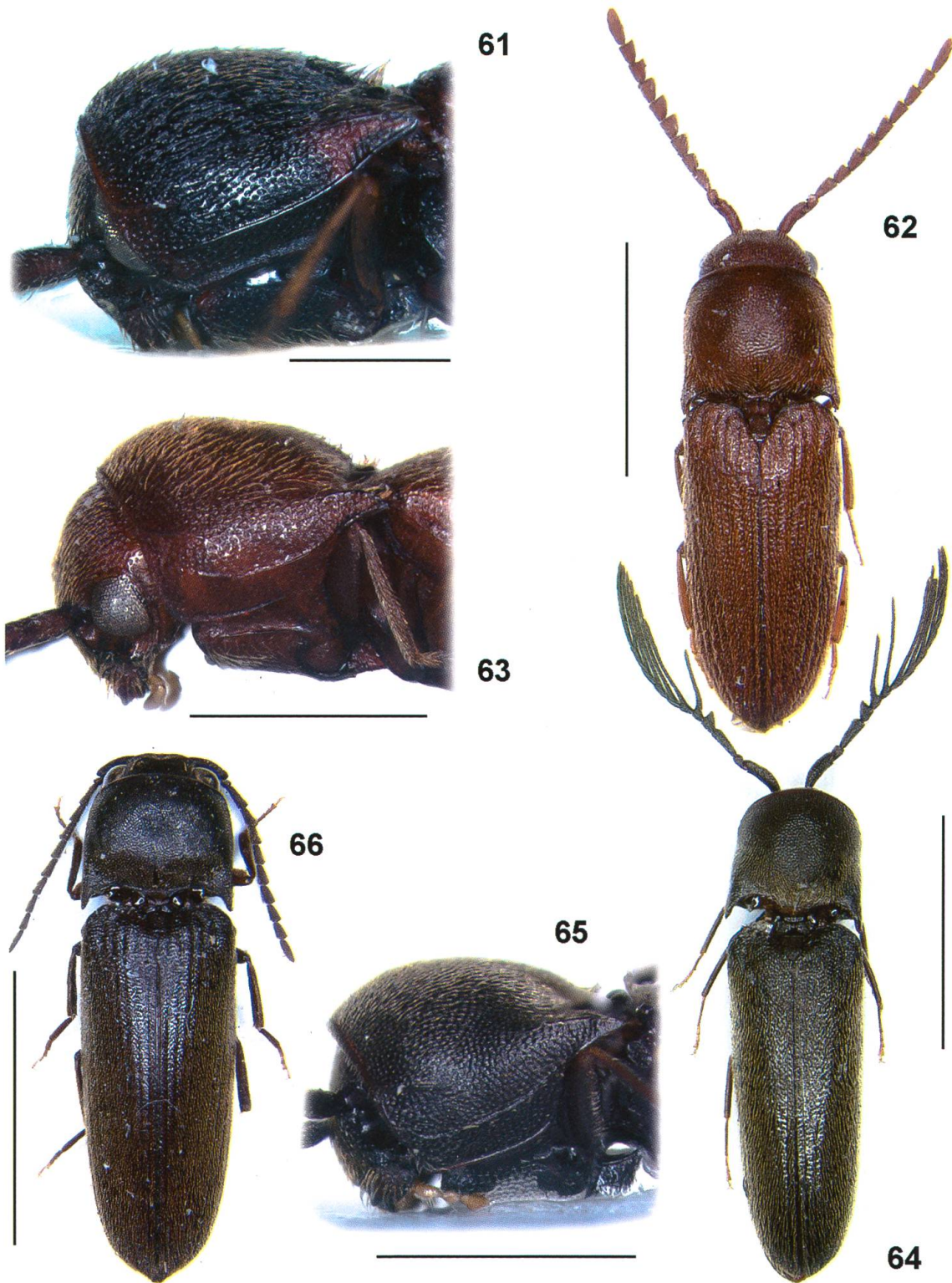
Figs 43–48. Eucnemidae from Laos: 43 – *Siniugum huaphanensis* ♂ holotype BMNH; 44–45 – *Microrhagus bolavenensis* ♀ holotype JMC; 46–47 – *Microrhagus entomophthalmoides* ♂ holotype BMNH; 48 – *Microrhagus hoabinus* ♂ non type NHMB. Dorsal habitus: 44, 46, 48. Lateral view: 43, 45, 47. (Scale 43–45, 47 = 1.0 mm; 46, 48 = 2.0 mm.)



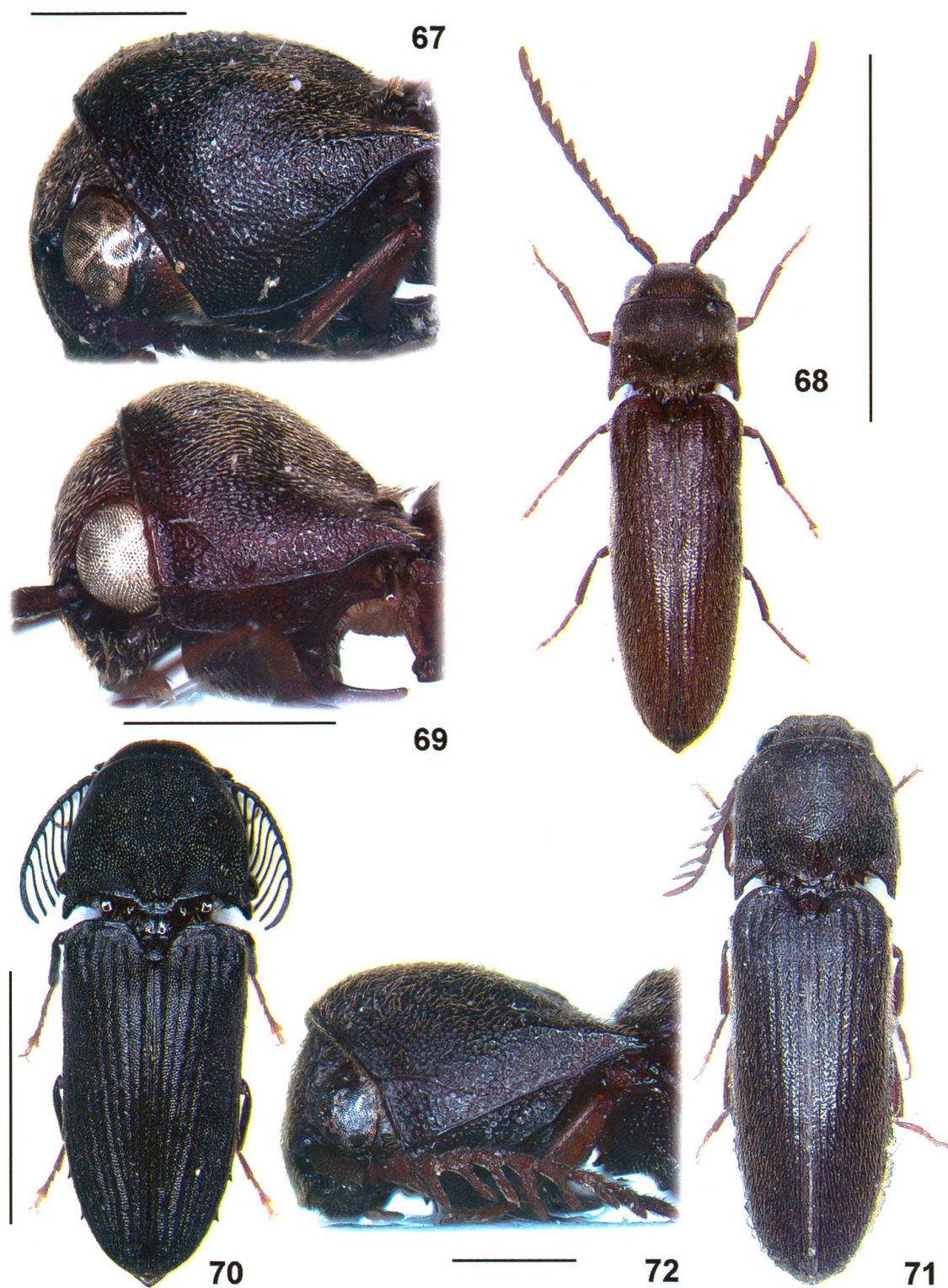
Figs 49–54. Eucnemidae from Laos: 49 – *Microrhagus hoabinus* ♂ non type NHMB; 50–51 – *Microrhagus inconsultus* ♂ non type NHMB; 52–53 – *Microrhagus luzonicus* non type GERP; 54 – *Microrhagus minimus* non type GERP. Dorsal habitus: 50, 52, 54. Lateral view: 49, 51, 53. (Scale 49, 51, 53 = 1.0 mm; 50, 52, 54 = 2.0 mm.)



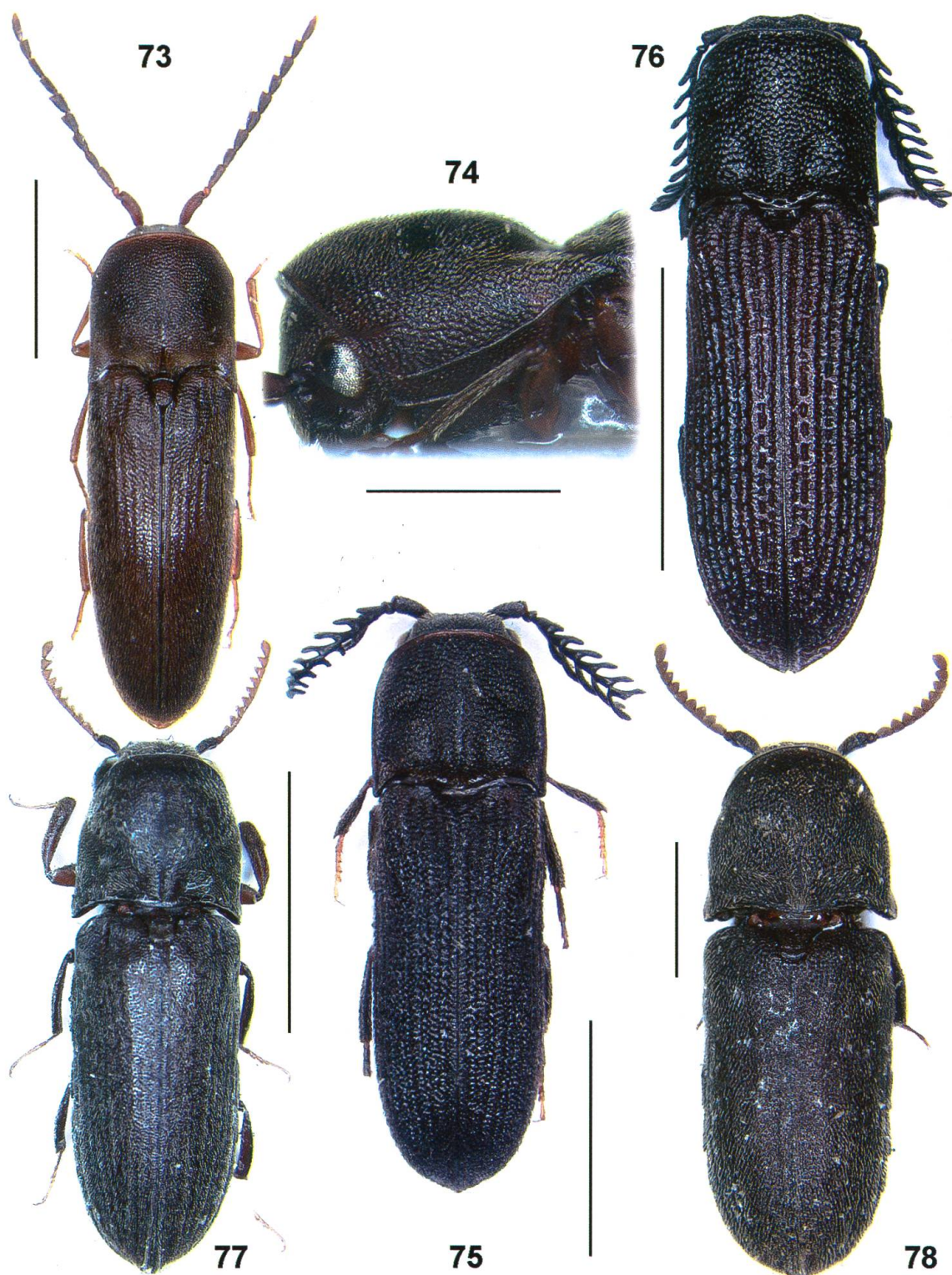
Figs 55–60. Eucnemidae from Laos: 55 – *Microrhagus minimus* non type GERP; 56–57 – *Microrhagus pavidus* non type BMNH; 58–59 – *Microrhagus posticus* ♂ non type BMNH; 60 – *Microrhagus rufoantennatus* ♂ holotype NHMB. Dorsal habitus: 56, 58, 60. Lateral view: 55, 57, 59. (Scale 55, 57, 59 = 1.0 mm; 56, 58, 60 = 2.0 mm.)



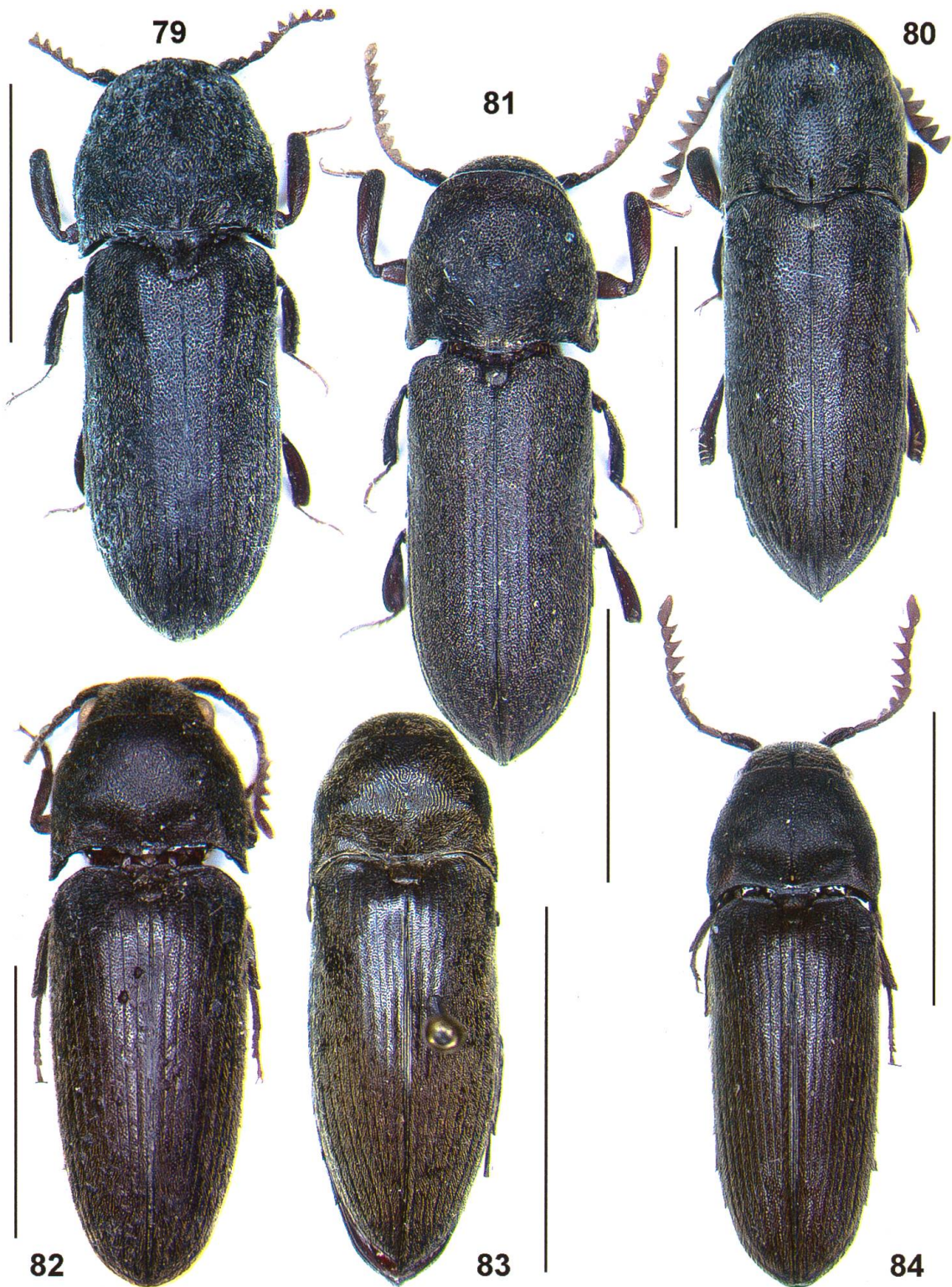
Figs 61–66. Eucnemidae from Laos: 61 – *Microrhagus rufoantennatus* ♂ holotype NHMB; 62–63 – *Microrhagus rufus* ♀ holotype NHMB; 64–65 – *Microrhagus walkeri* ♂ holotype BMNH; 66 – *Dirrhagofarsus foveicollis* ♀ holotype NHMB. Dorsal habitus: 62, 64, 66. Lateral view: 61, 63, 65. (Scale 61 = 0.5 mm; 63, 65 = 1.0 mm; 62, 64 = 2.0 mm; 66 = 5.0 mm.)



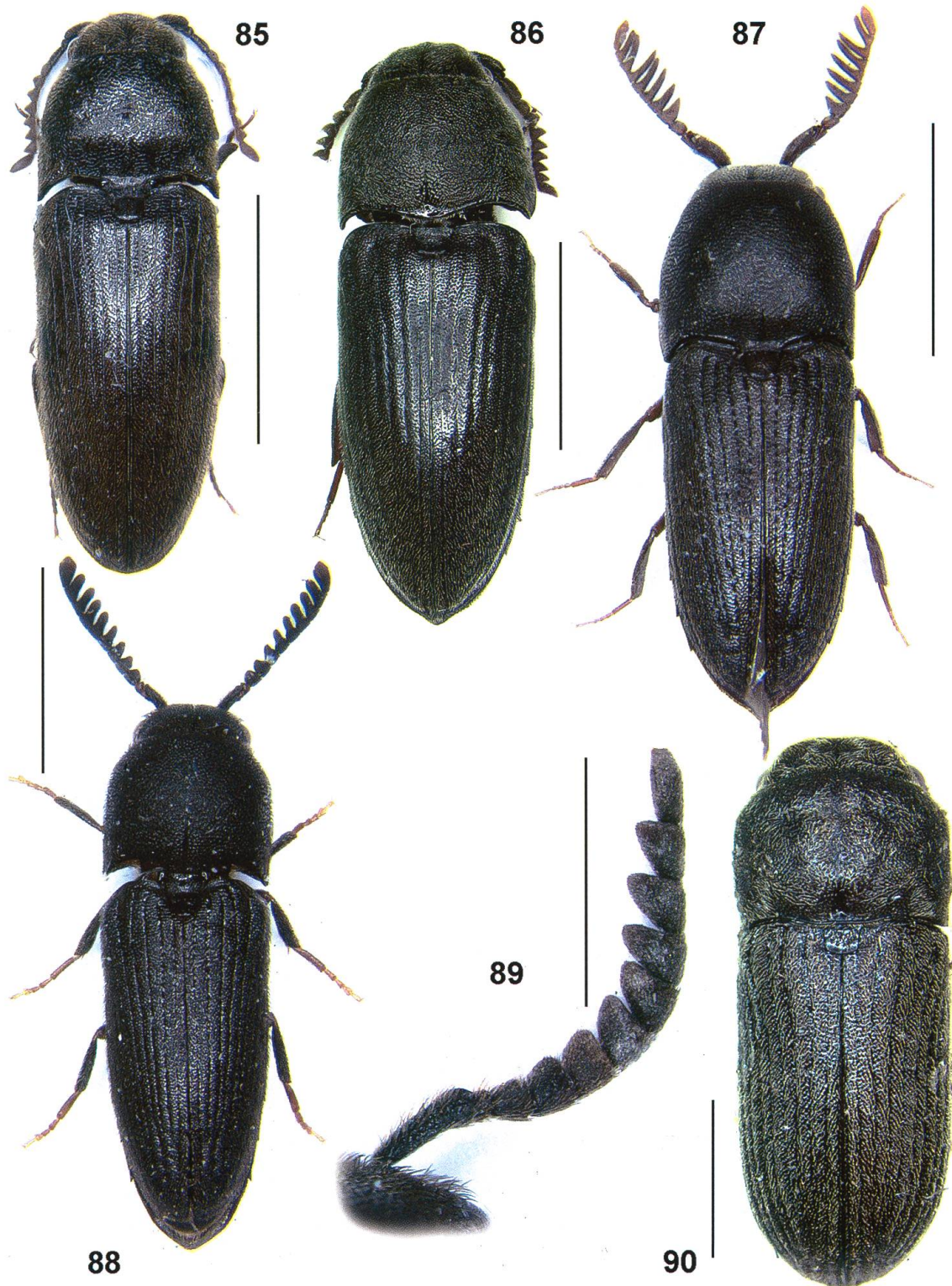
Figs 67–72. Eucnemidae from Laos: 67 – *Dirrhagofarsus foveicollis* ♀ holotype NHMB; 68–69 – *Rhacopus olexai* ♂ non type NHMB; 70 – *Cafolus crassus* ♂ non type NHMB; 71–72 – *Prodirhagus kresli* ♂ holotype JMC. Dorsal habitus: 68, 70, 71. Lateral view: 67, 69, 72. (Scale 67, 69, 72 = 1.0 mm; 68, 70–71 = 5.0 mm.)



Figs 73–78. Eucnemidae from Laos: 73–74 – *Prodirhagus subparallelus* ♀ non type NHMB; 75 – *Sarpedon apicalis* ♂ holotype BMNH; 76 – *Sarpedon bipectinatus* ♂ non type BMNH; 77 – *Scopulifer asiaticus* ♂ paratype JMC; 78 – *Scopulifer atkinsoni* ♀ non type NHMB. Dorsal habitus: 73, 75–78. Lateral view: 74. (Scale 74 = 1.0 mm; 73, 75, 78 = 2.0 mm; 76–77 = 5.0 mm.)



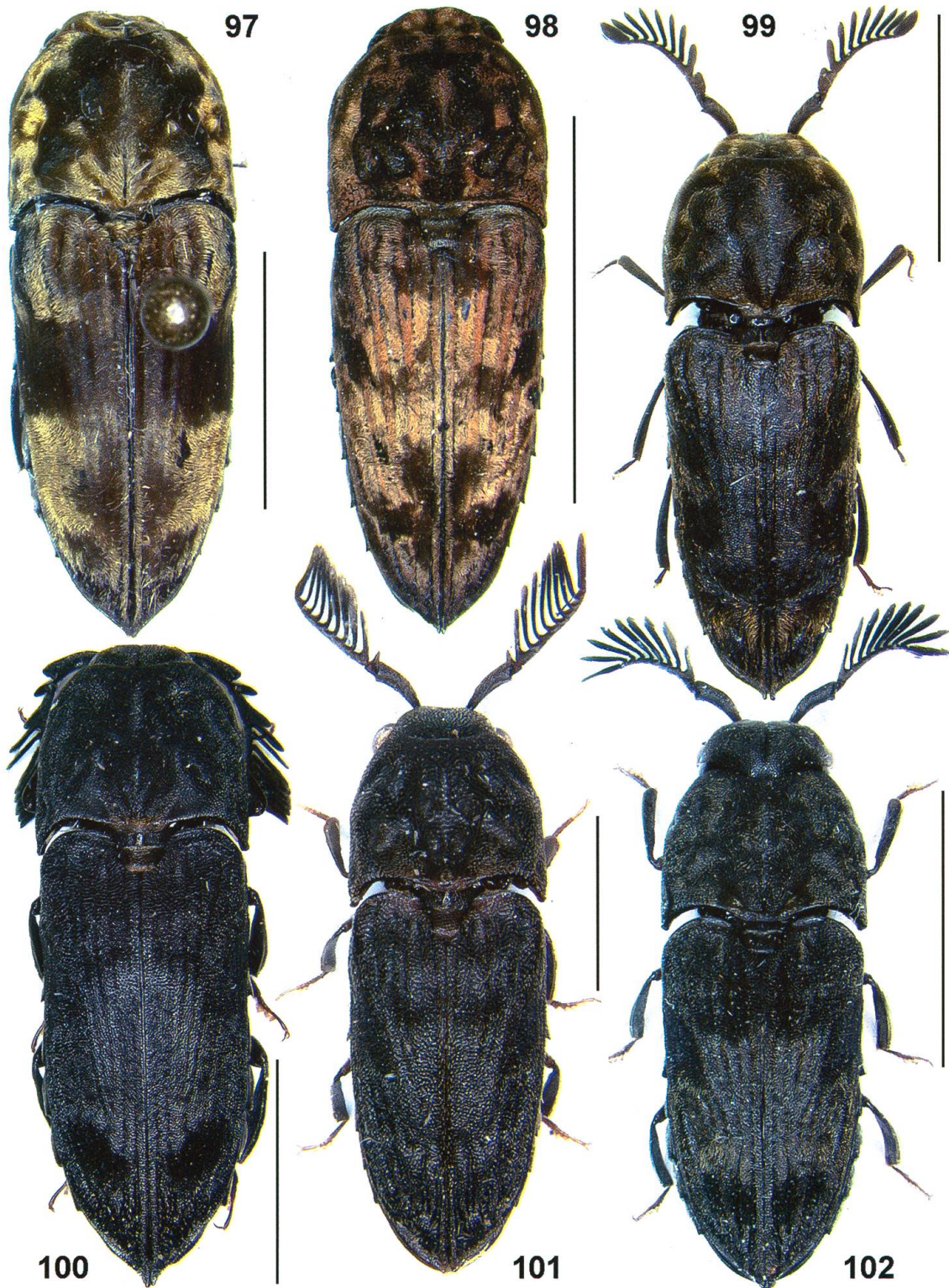
Figs 79–84. Eucnemidae from Laos and Southeast Asia: 79 – *Scopulifer laosianus* ♀ holotype JMC; 80 – *Dendrocharis intermedia* non type BMNH; 81 – *Dendrocharis rouyeri* non type JMC; 82 – *Arisus bituberculatus* non type NHMB; 83 – *Arisus castelnaui* holotype MNHM; 84 – *Arisus orientalis* non type NHMB. Dorsal habitus: 79–84. (Scale 79–82, 84 = 5.0 mm; 83 = 10.0 mm.)



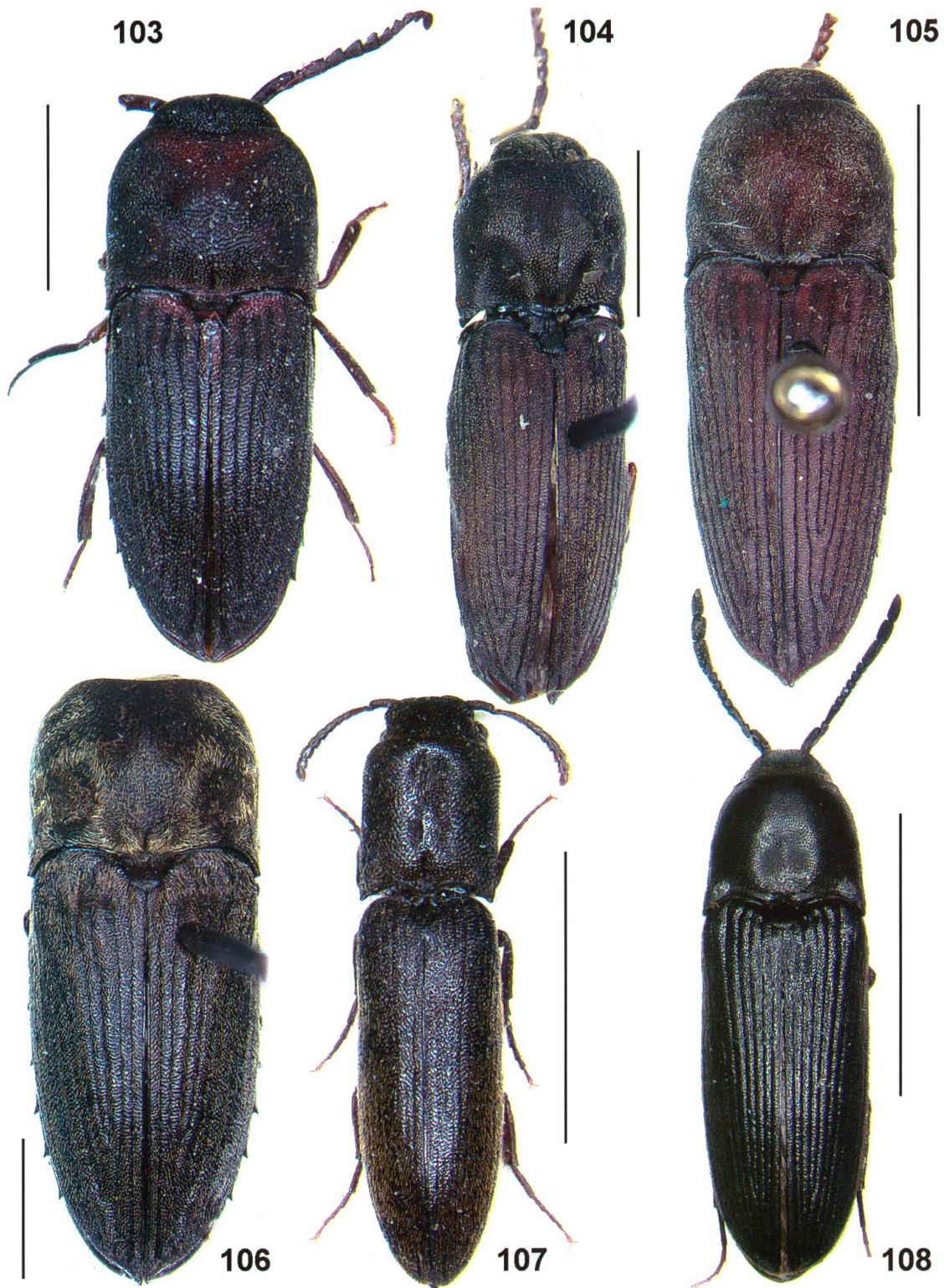
Figs 85–90. Eucnemidae from Laos: 85 – *Arisus wicardi* non type NHMB; 86 – *Euryostus asiaticus* ♂ holotype BMNH; 87 – *Vitellius singularis* non type NHMB; 88–89 – *Feaia geiseri* (♂ holotype NHMB; ♀ allotype BMNH); 90 – *Mesogenus harmandi* non type NHMB. Dorsal habitus: 85–88, 90. Antenna: 89. (Scale 89 = 1.0 mm; 87–88, 90 = 2.0 mm; 85–86 = 5.0 mm.)



Figs 91–96. Eucnemidae from Laos and Southeast Asia: 91 – *Mesogenus siamensis* ♀ (allotype of *Mesogenus laosianus*) (image provided by Mercedes París of Museo Nacional de Ciencias Naturales in Madrid, Spain (MNCN)); 92 – *Poecilochrus cordieri* non type BMNH; 93 – *Poecilochrus piceus* non type NHMB; 94 – *Poecilochrus striatus* non type NHMB; 95 – *Agastocerus frontalis* non type NHMB; 96 – *Galbites albiventris* non type NHMB. Dorsal habitus: 91–96. (Scale 93, 95 = 2.0 mm; 92, 94, 96 = 5.0 mm.)



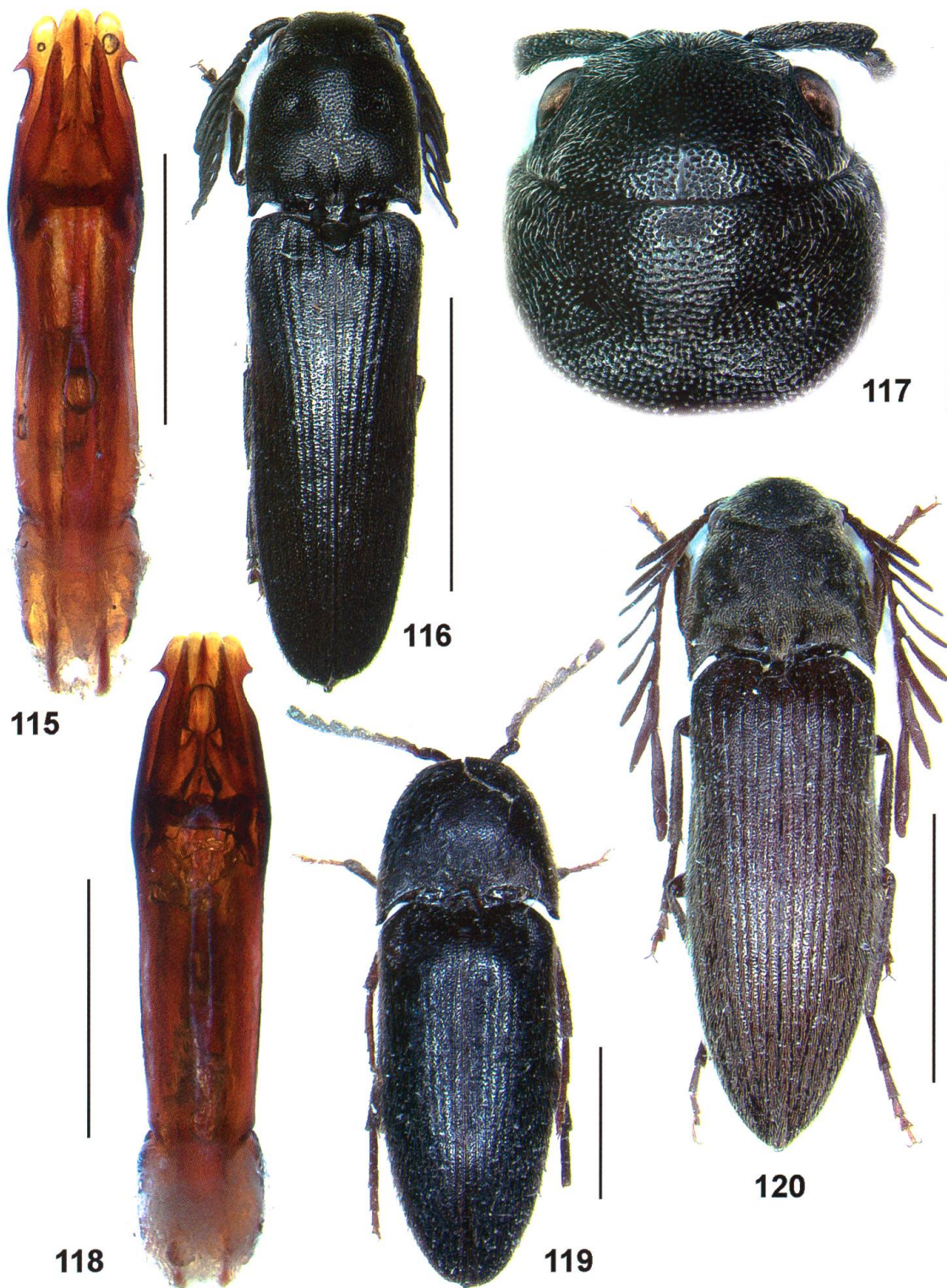
Figs 97–102. Eucnemidae from Laos and Southeast Asia: 97 – *Galbites australiae* non type GERP; 98 – *Galbites chrysocoma* non type GERP; 99 – *Galbites fulva* non type GERP; 100 – *Galbites funebris* non type NHMB; 101 – *Galbites nigrita* non type NHMB; 102 – *Galbites tuberculata* non type NHMB. Dorsal habitus: 97–102. (Scale 101 = 2.0 mm; 97, 99–100, 102 = 5.0 mm; 98 = 10.0 mm.)



Figs 103–108. Eucnemidae from Laos and Southeast Asia: 103 – *Galbimorpha agasteceroides* ♂ non type BMNH; 104 – *Galbimorpha curta* ♀ holotype MNHN; 105 – *Galbimorpha ferruginea* ♀ lectotype MNHN; 106 – *Galbimorpha quadricollis* ♀ lectotype MNHN; 107 – *Henecocerus angusticollis* non type GERP; 108 – *Euryptychus pasteuri* ♂ non type BMNH. Dorsal habitus: 103–108. (Scale 103–104, 106 = 2.0 mm; 105, 107–108 = 5.0 mm.)



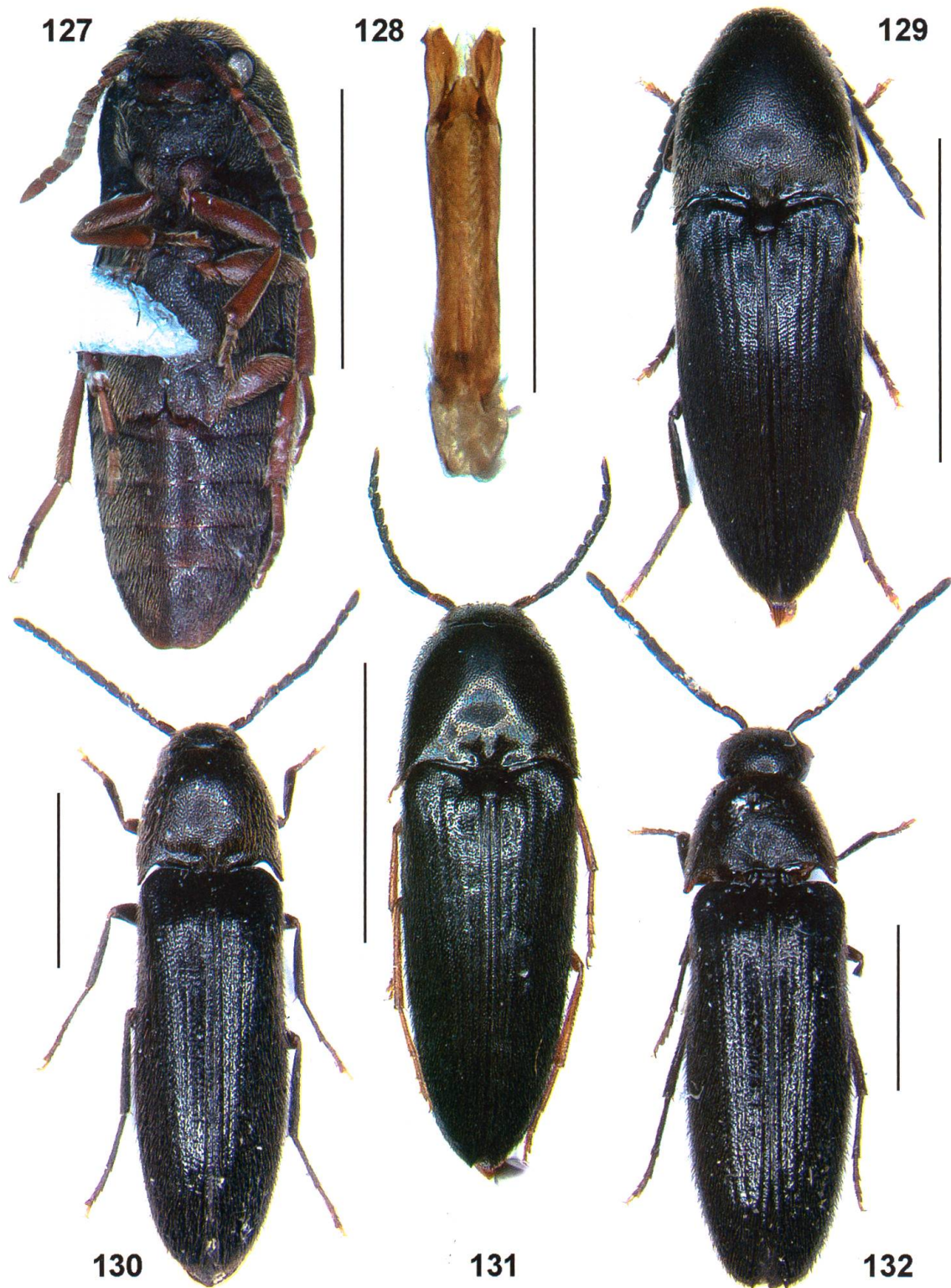
Figs 109–114. Eucnemidae from Laos and Southeast Asia: 109 – *Eudorus javanicus* non type BMNH; 110 – *Chapianus monilicornis* ♂ non type NHMB; 111 – *Heterotaxis elongata* ♀ holotype JMC; 112 – *Procladidus coomani* ♂ non type NHMB; 113–114 – *Semnodema harmandi* ♂ non type BMNH. Dorsal habitus: 109–113. Head (dorsal view): 114. (Scale 111 = 1.0 mm; 109–110, 114 = 2.00 mm; 112–113 = 5.0 mm.)



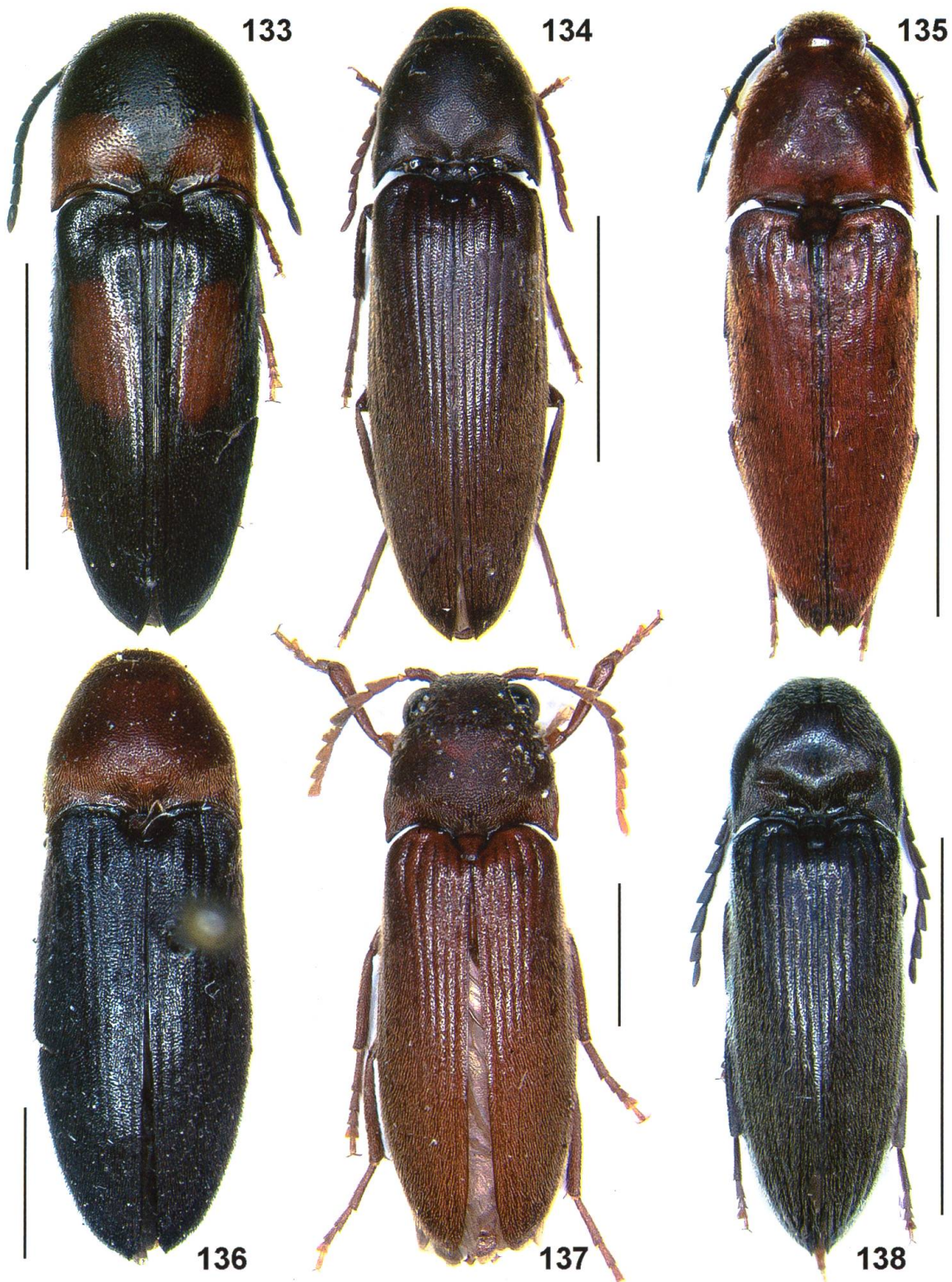
Figs 115–120. Eucnemidae from Laos: 115 – *Semnodema harmandi* ♂ non type BMNH; 116–118 – *Semnodema punctata* (116, 117 – ♂ holotype BMNH; 118 – ♂ paratype BMNH); 119 – *Hodocerus ceratoides* ♂ holotype BMNH; 120 – *Hodocerus malaisiensis* ♂ non type GERP. Dorsal habitus: 116, 119, 120. Head (dorsal view): 117. Aedeagus: 115, 118. (Scale 115, 118 = 1.0 mm; 117, 119 = 2.0 mm; 116, 120 = 5.0 mm.)



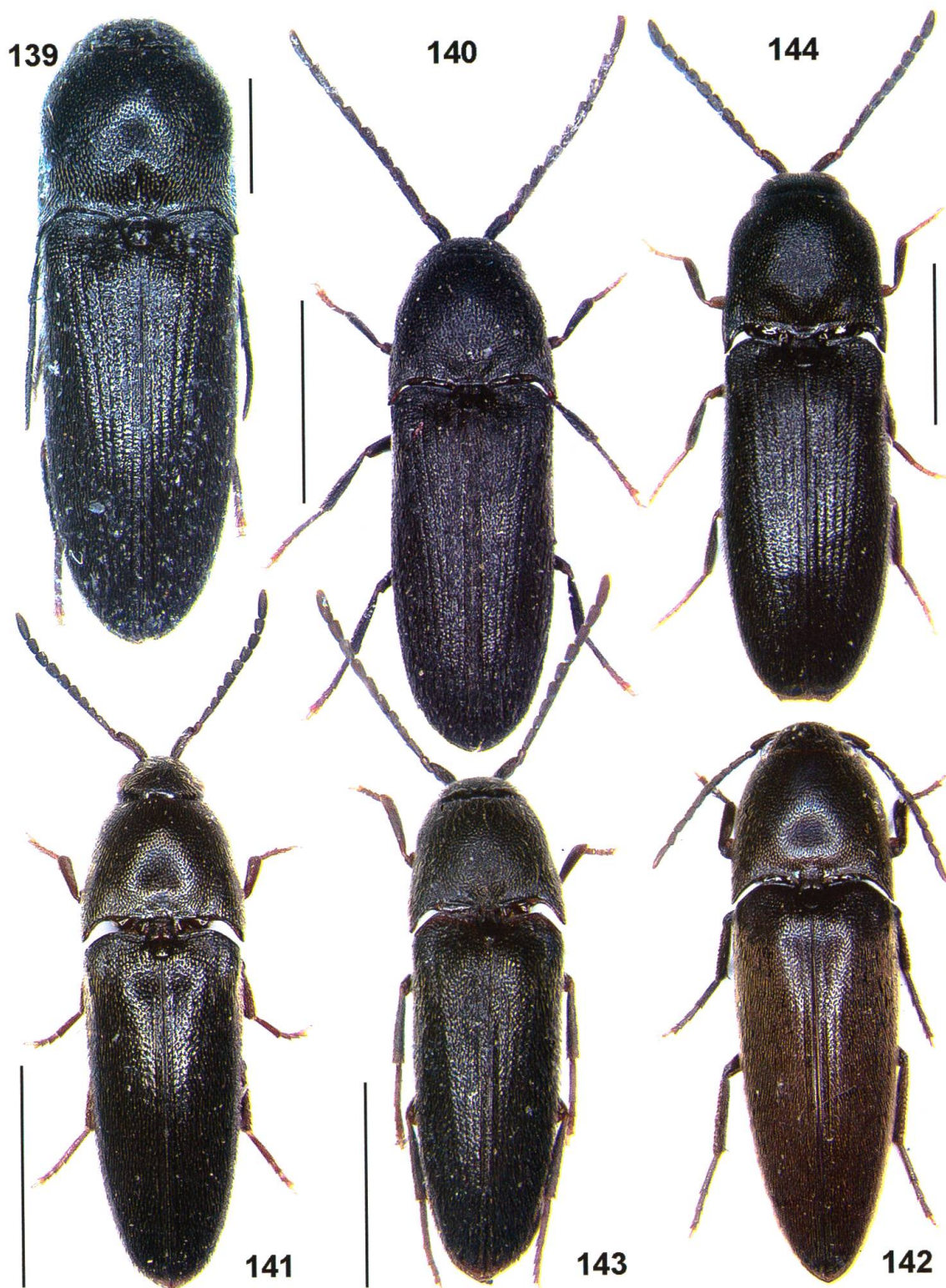
Figs 121–126. Eucnemidae from Laos: 121 – *Melanoscython monilicornis* ♂ holotype MNHN; 122 – *Melanoscython ohmomi* ♀ non type GERP; 123 – *Scython apicalis* ♂ non type NHMB; 124 – *Macroscython coomani* ♂ non type JMC; 125 – *Macroscython granulosus* ♂ holotype NHMB; 126 – *Pseudoisarthus annamensis* ♂ holotype BMNH. Dorsal habitus: 121–126. (Scale 121–122, 126 = 2.0 mm; 123, 125 = 5.0 mm.)



Figs 127–132. Eucnemidae from Laos: 127–128 – *Pseudoisarthrus annamensis* (127 – ♂ holotype BMNH; 128 – ♂ paratype GERP); 129 – *Spinifornax carissae* ♂ non type NHMB; 130 – *Spinifornax dubius* ♂ non type NHMB; 131 – *Spinifornax nigridorsus* ♂ holotype BMNH; 132 – *Spinifornax pacholatkoii* ♂ holotype NHMB. Dorsal habitus: 129–132. Ventral habitus: 127. Aedeagus: 128. (Scale 128 = 1.0 mm; 127, 130, 132 = 2.0 mm; 129, 131 = 5.0 mm.)



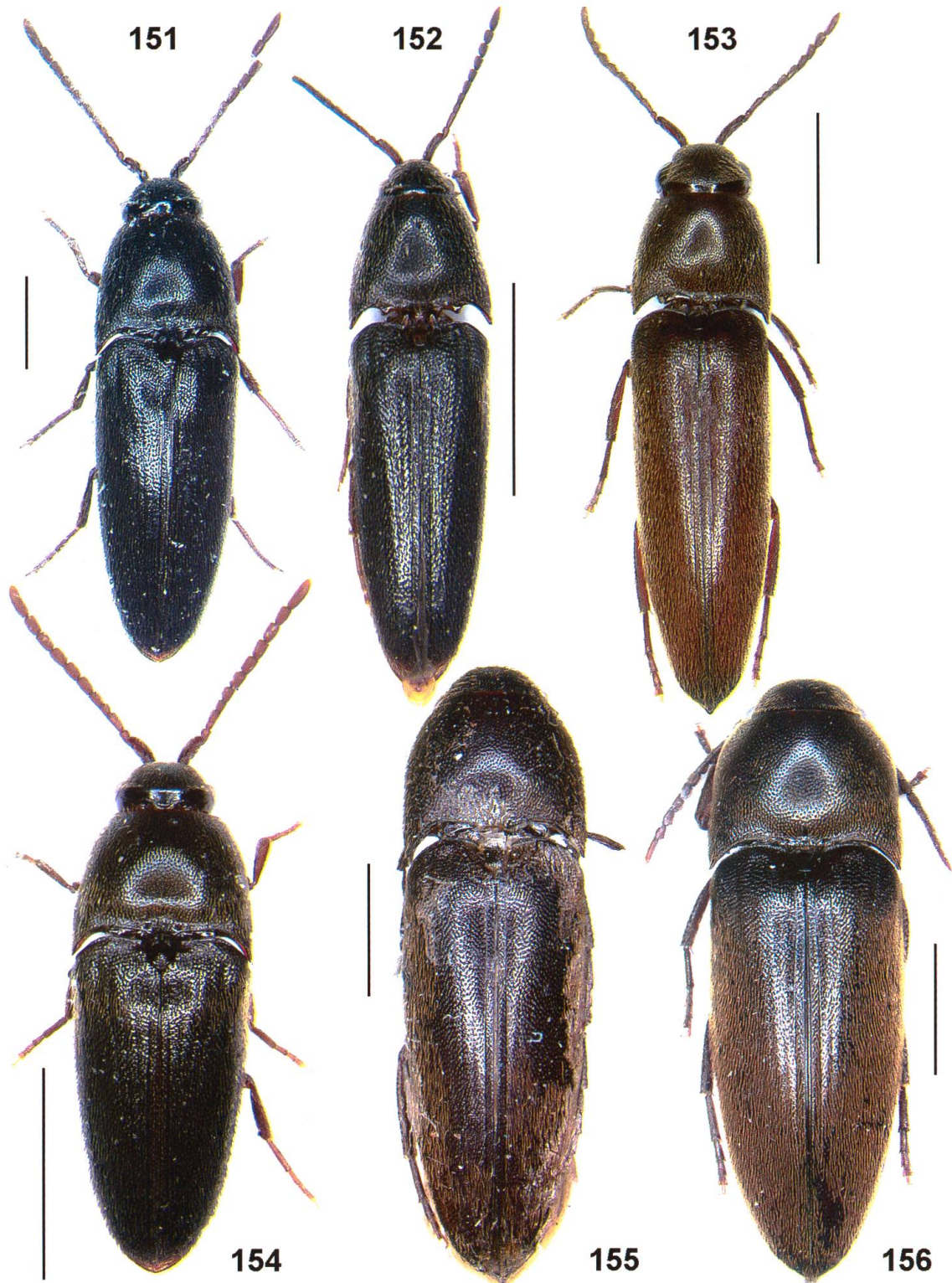
Figs 133–138. Eucnemidae from Laos: 133 – *Spinifornax salvazai* ♂ non type BMNH; 134 – *Spinifornax striatus* ♀ holotype NHMB; 135 – *Spinifornax superbus* ♀ non type NHMB; 136 – *Spinifornax vitalisi* ♀ holotype MNHN; 137 – *Serrifornax brevicollis* ♂ non type NHMB; 138 – *Serrifornax tumidicollis* non type WSC. Dorsal habitus: 133–138. (Scale 136–137 = 2.0 mm; 133–134 = 5.0 mm; 135, 138 = 10.0 mm.)



Figs 139–144. Eucnemidae from Laos: 139 – *Ceratus antennatus* ♂ non type JMC; 140 – *Ceratus phoupaniensis* ♂ holotype NHMB; 141 – *Fornax astriatus* ♂ paratype NHMB; 142 – *Fornax attenuatus* ♀ non type BMNH; 143 – *Fornax brancuccii* ♂ holotype NHMB; 144 – *Fornax carinicollis* ♀ holotype NHMB. Dorsal habitus: 139–144. (Scale 139 = 1.0 mm; 140–141, 143–144 = 2.0 mm; 142 = 5.0 mm.)



Figs 145–150. Eucnemidae from Laos: 145 – *Fornax collega* ♀ non type NHMB; 146 – *Fornax concolor* non type GERP; 147 – *Fornax differens* ♀ non type NHMB; 148 – *Fornax incisus* ♀ non type NHMB; 149 – *Fornax morosus* ♀ non type JMC; 150 – *Fornax nicotianae* ♀ non type NHMB. Dorsal habitus: 145–150. (Scale 149 = 1.0 mm; 146–147, 150 = 2.0 mm; 145, 148 = 5.0 mm.)



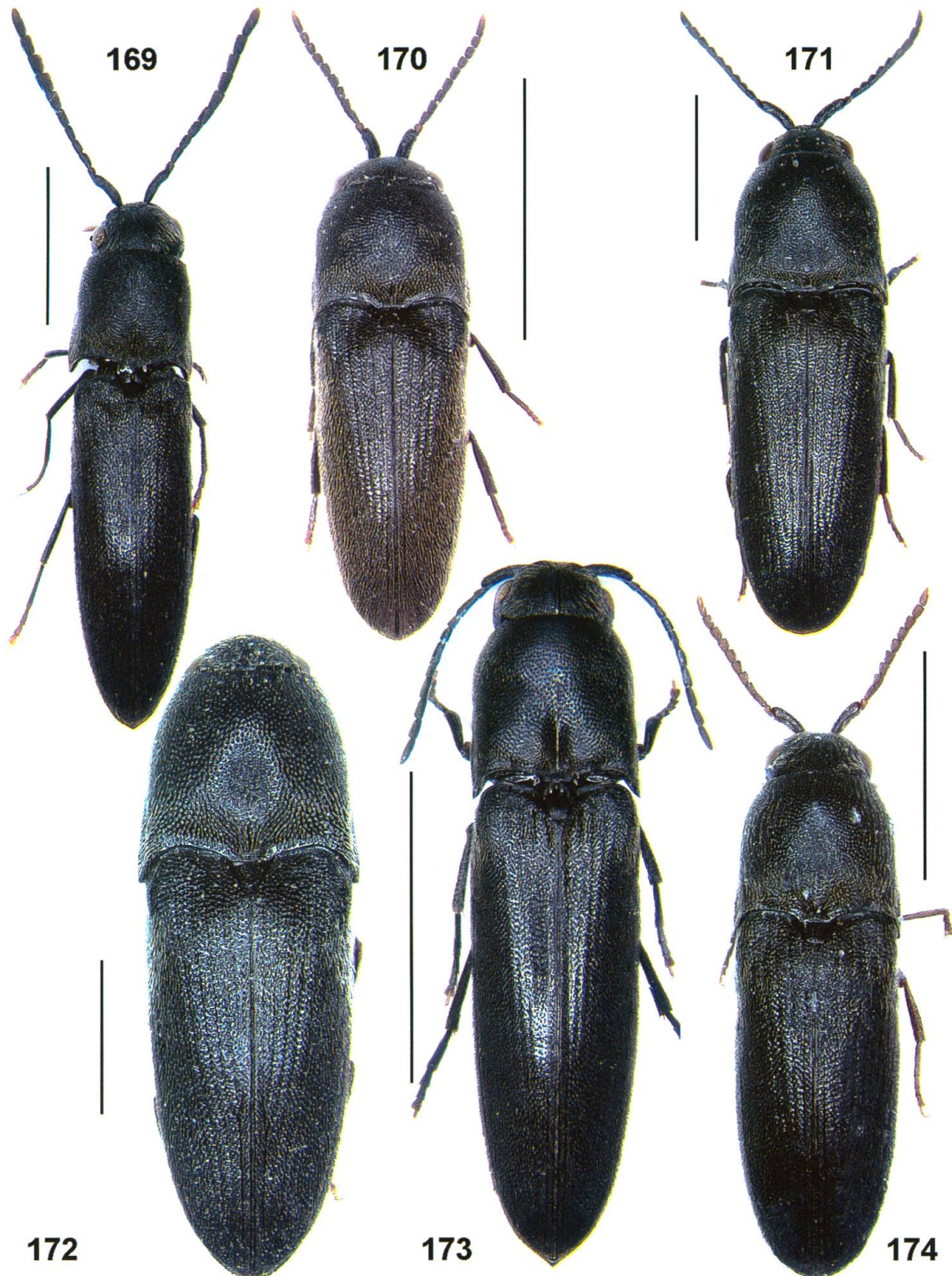
Figs 151–156. Eucnemidae from Laos: 151 – *Fornax oudomxaiensis* ♂ holotype JMC; 152 – *Fornax phoupaniensis* ♂ holotype NHMB; 153 – *Fornax rotundicollis* ♀ non type BMNH; 154 – *Fornax rufoantennatus* ♂ holotype NHMB; 155 – *Fornax subacuminatus* ♂ non type BMNH; 156 – *Fornax vestitus* ♀ non type NHMB. Dorsal habitus: 151–156. (Scale 151 = 1.0 mm; 152–156 = 2.0 mm.)



Figs 157–162. Eucnemidae from Laos: 157 – *Raapia sauteri* ♂ non type NHMB; 158 – *Dorsifornax borikhamxaiensis* ♀ holotype NHMB; 159–161 – *Xylofornax dromaeoloides* ♀ holotype JMC; 162 – *Xylofornax piceus* ♀ holotype JMC. Dorsal habitus: 157–159, 162. Antenna: 160. Venter: 161. (Scale 159–162 = 1.0 mm; 157 = 2.0 mm; 158 = 5.0 mm.)



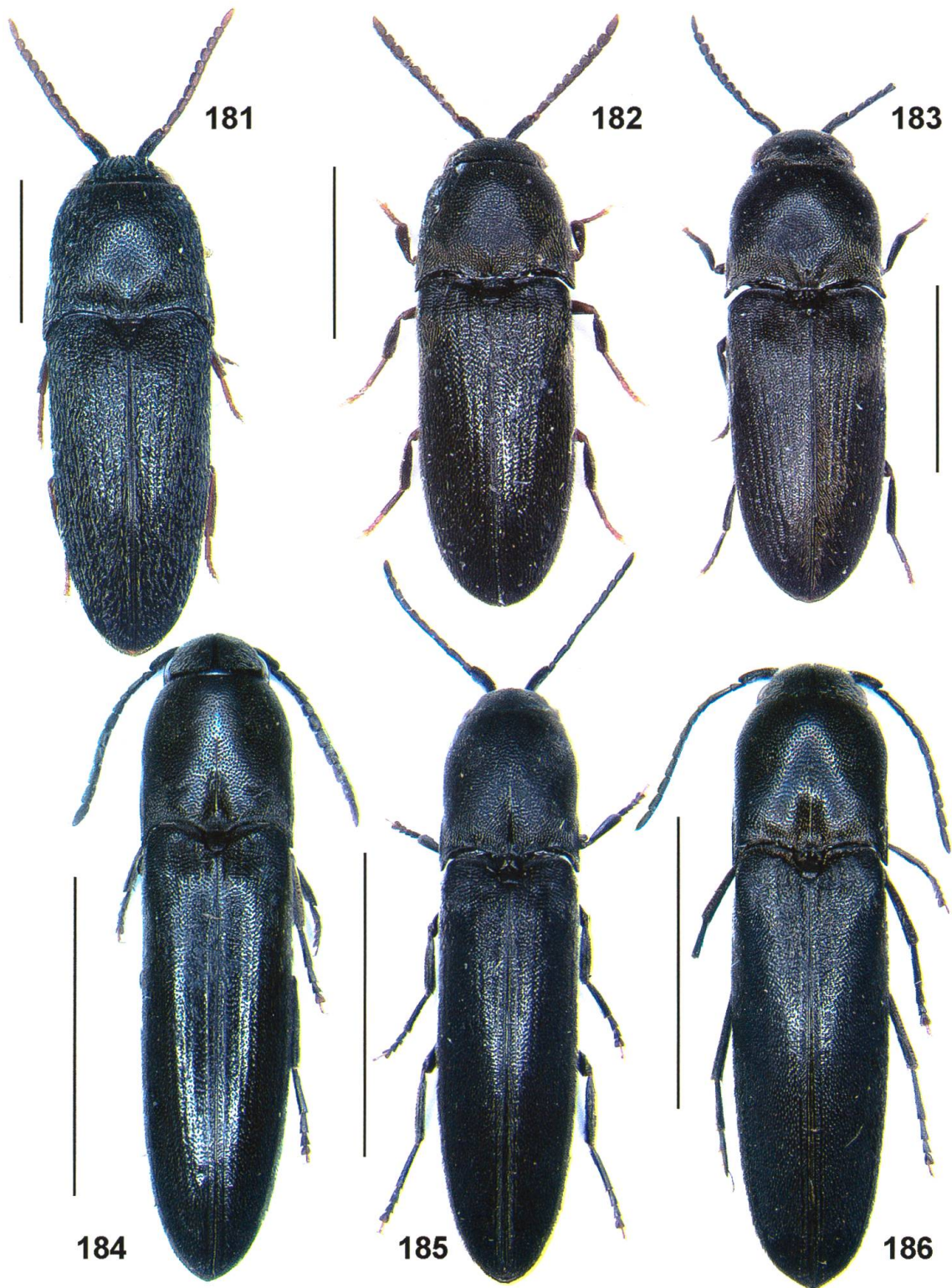
Figs 163–168. Eucnemidae from Laos: 163 – *Dromaeolus amicus* ♀ non type NHMB; 164 – *Dromaeolus assamensis* ♀ non type NHMB; 165 – *Dromaeolus bolavenensis* ♀ holotype JMC; 166 – *Dromaeolus confusus* ♀ non type NHMB; 167 – *Dromaeolus congener* ♂ non type BMNH; 168 – *Dromaeolus coomani* ♀ non type BMNH. Dorsal habitus: 163–168. (Scale 165 = 1.0 mm; 163–164, 166–167 = 2.0 mm; 168 = 5.0 mm.)



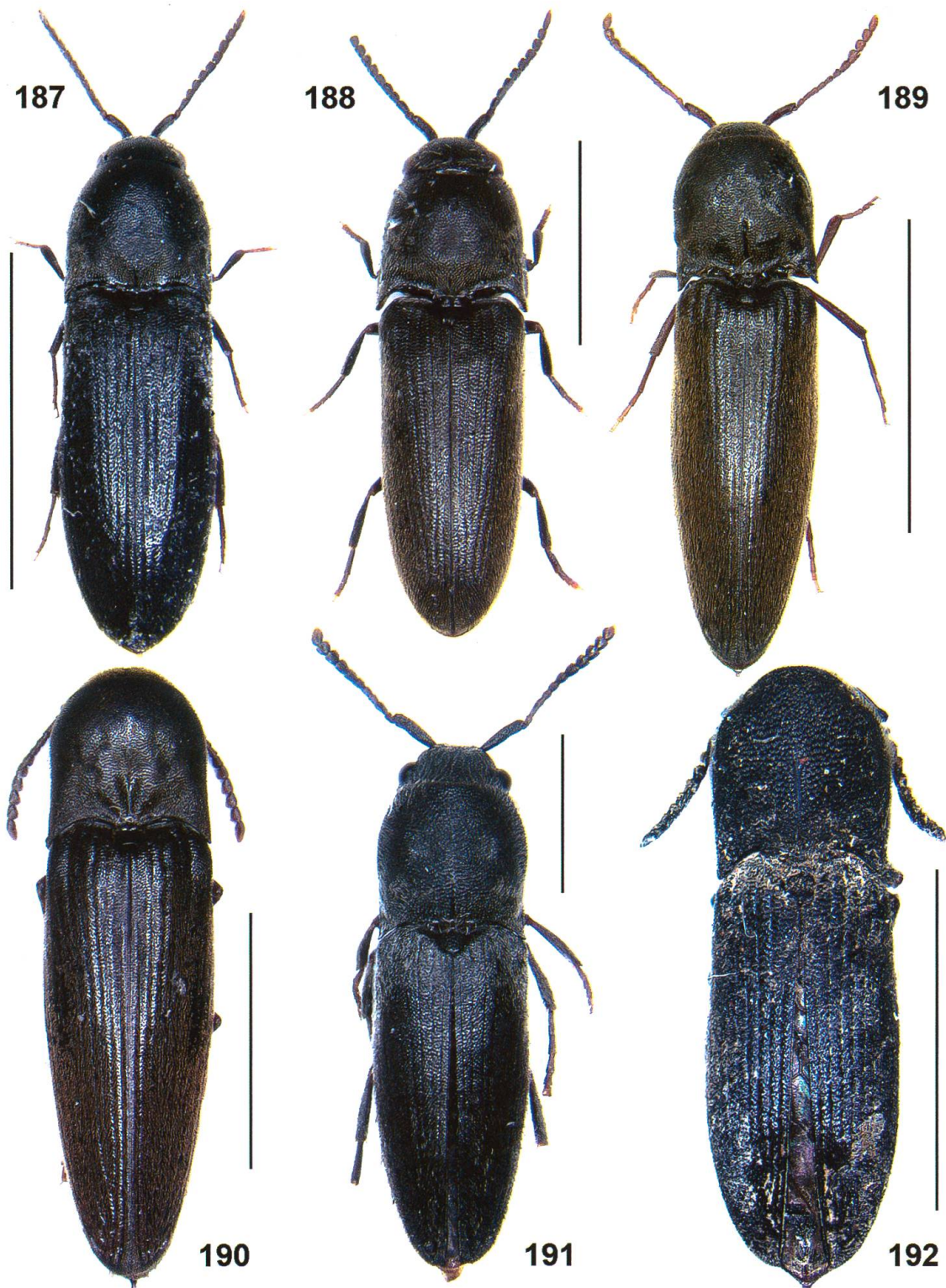
Figs 169–174. Eucnemidae from Laos: 169 – *Dromaeolus cylindricus* ♂ non type BMNH; 170 – *Dromaeolus depressifrons* ♂ holotype NHMB; 171 – *Dromaeolus dissimilis* ♀ non type NHMB; 172 – *Dromaeolus divergentus* ♂ holotype JMC; 173 – *Dromaeolus exilis* ♂ non type BMNH; 174 – *Dromaeolus ferruginipes* ♀ non type NHMB. Dorsal habitus: 169–174. (Scale 172 = 1.0 mm; 169–171, 174 = 2.0 mm; 173 = 5.0 mm.)



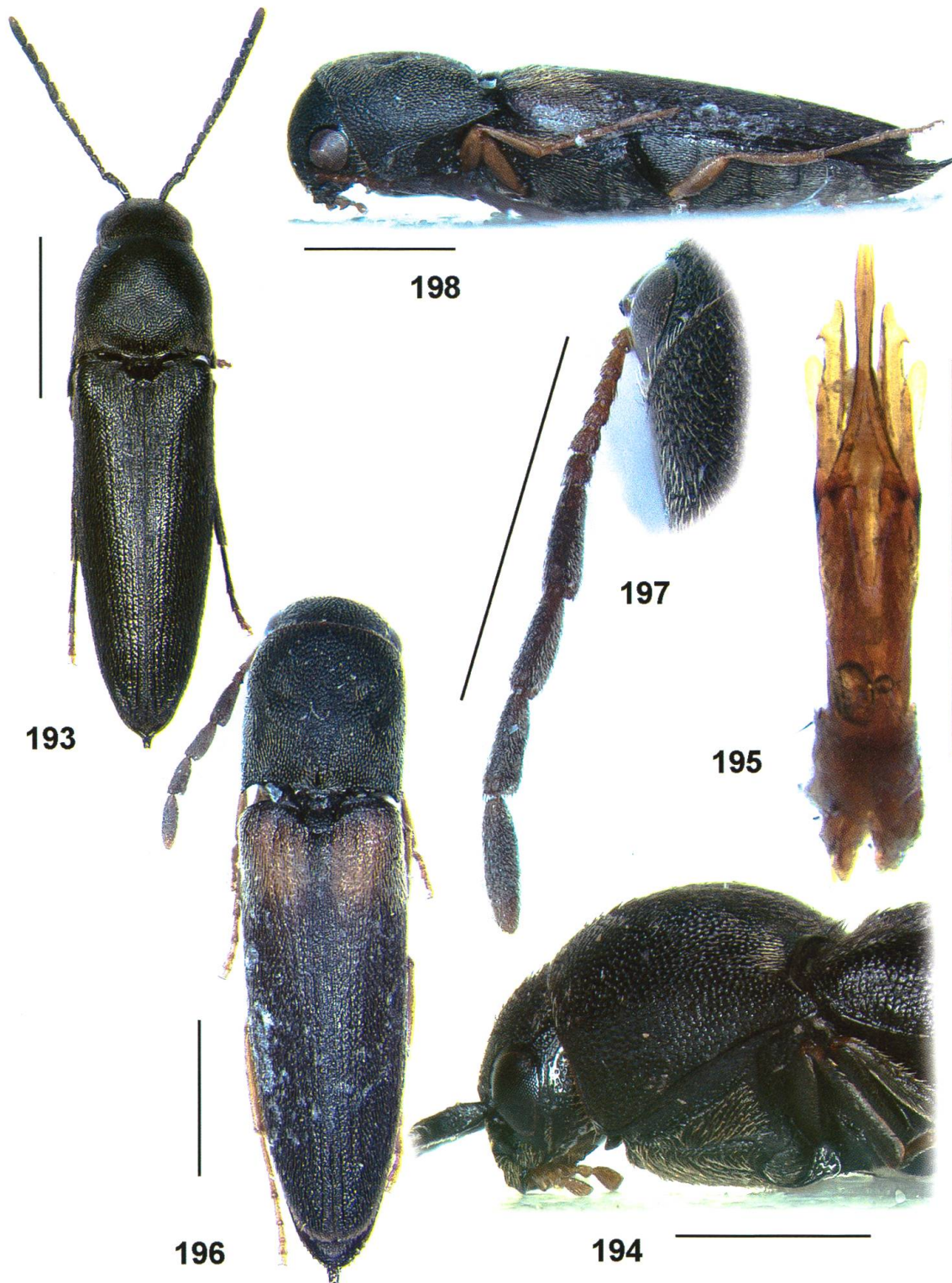
Figs 175–180. Eucnemidae from Laos: 175 – *Dromaeolus foveatus* ♀ non type BMNH; 176 – *Dromaeolus granosus* ♀ non type BMNH; 177 – *Dromaeolus indicus* ♂ non type NHMB; 178 – *Dromaeolus kubani* ♀ holotype NHMB; 179 – *Dromaeolus laosianus* ♂ holotype NHMB; 180 – *Dromaeolus longicollis* ♂ non type BMNH. Dorsal habitus: 175–180. (Scale 175, 177–180 = 2.0 mm; 176 = 5.0 mm.)



Figs 181–186. Eucnemidae from Laos: 181 – *Dromaeolus minimus* ♂ non type JMC; 182 – *Dromaeolus modiglianii* ♀ non type NHMB; 183 – *Dromaeolus phonsavanicus* ♀ holotype NHMB; 184 – *Dromaeolus semigriseus* ♂ non type BMNH; 185 – *Dromaeolus simplicifrons* ♂ holotype NHMB; 186 – *Dromaeolus sulcicollis* ♀ non type BMNH. Dorsal habitus: 181–186. (Scale 181 = 1.0 mm; 182–183 = 2.0 mm; 184–186 = 5.0 mm.)



Figs 187–192. Eucnemidae from Laos: 187 – *Dromaeolus vicinus* ♀ non type NHMB; 188 – *Dromaeolus xiengkhouangensis* ♀ holotype NHMB; 189 – *Nematodes feai* ♀ non type BMNH; 190 – *Nematodes lateralis* ♀ holotype BMNH; 191 – *Nematodes suturalis* ♀ non type BMNH; 192 – *Coomanius lugubris* ♀ non type ZSM. Dorsal habitus: 187–192. (Scale 188, 191 = 2.0 mm; 187, 189–190, 192 = 5.0 mm.)



Figs 193–198. Eucnemidae from Laos: 193–195 *Graciliforma rufoapicalis* ♂ holotype BMNH; 196–198 *Miruantennus basalis* ♂ holotype JMC. Dorsal habitus: 193, 196. Hypomeron: 194, 198. Aedeagus: 195. Antenna: 197. (Scale 194–198 = 1.0 mm; 193 = 2.0 mm.)

