

Zeitschrift: Entomologica Basiliensia
Herausgeber: Naturhistorisches Museum Basel, Entomologische Sammlungen
Band: 18 (1995)

Artikel: A new Lachesilla in the pedicularia group from Venezuela (Psocoptera: Lachesillidae)
Autor: García Aldrete, A. N.
DOI: <https://doi.org/10.5169/seals-980459>

Nutzungsbedingungen

Die ETH-Bibliothek ist die Anbieterin der digitalisierten Zeitschriften auf E-Periodica. Sie besitzt keine Urheberrechte an den Zeitschriften und ist nicht verantwortlich für deren Inhalte. Die Rechte liegen in der Regel bei den Herausgebern beziehungsweise den externen Rechteinhabern. Das Veröffentlichen von Bildern in Print- und Online-Publikationen sowie auf Social Media-Kanälen oder Webseiten ist nur mit vorheriger Genehmigung der Rechteinhaber erlaubt. [Mehr erfahren](#)

Conditions d'utilisation

L'ETH Library est le fournisseur des revues numérisées. Elle ne détient aucun droit d'auteur sur les revues et n'est pas responsable de leur contenu. En règle générale, les droits sont détenus par les éditeurs ou les détenteurs de droits externes. La reproduction d'images dans des publications imprimées ou en ligne ainsi que sur des canaux de médias sociaux ou des sites web n'est autorisée qu'avec l'accord préalable des détenteurs des droits. [En savoir plus](#)

Terms of use

The ETH Library is the provider of the digitised journals. It does not own any copyrights to the journals and is not responsible for their content. The rights usually lie with the publishers or the external rights holders. Publishing images in print and online publications, as well as on social media channels or websites, is only permitted with the prior consent of the rights holders. [Find out more](#)

Download PDF: 03.04.2026

ETH-Bibliothek Zürich, E-Periodica, <https://www.e-periodica.ch>

Entomologica Basiliensia	18	25–28	1995	ISSN 0253-2484
--------------------------	----	-------	------	----------------

A new *Lachesilla* in the *pedicularia* group from Venezuela (Psocoptera: Lachesillidae)

by A. N. García Aldrete

Abstract: A new species of *Lachesilla*, from western Venezuela is here described. It belongs in species group *pedicularia*, and its male genitalia is very similar to that of a species of *Nadleria*, the sister genus of *Lachesilla*.

Key words: Psocoptera – *Lachesilla* – *Nadleria* – Venezuela.

As defined by GARCIA ALDRETE (1974a), the species group *pedicularia*, of the genus *Lachesilla*, is now known to include 78 species, 33 of which remain to be described. The group is best represented in Africa and in South America, with 27 and 25 species respectively; 11 species occur in Europe and nine each occur in México and the area of the U.S. and Canada; four species each have been collected in Central America and the Antilles, and only three species have been recorded in the Oriental Region. Two species in this group are known in Australia, both of them introduced.

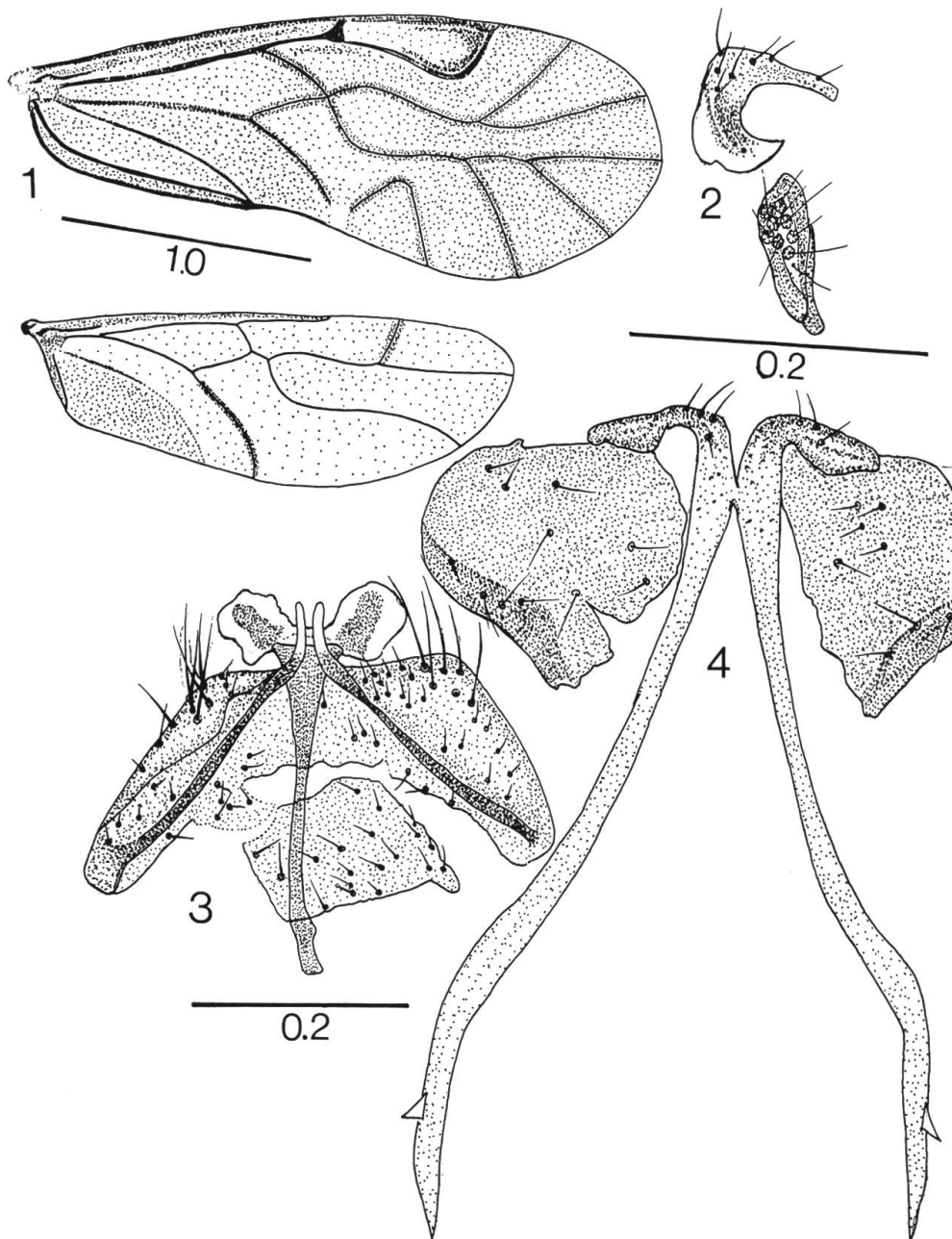
MOCKFORD (1985), has shown that the genital characters presented by males of species in the *pedicularia* group are plesiomorphous to *Lachesilla*, as they are shared, by common ancestry, with the males of *Nadleria* BADONNEL and GARCIA ALDRETE (1979, 1980); these genera maintain a sister group relationship. I describe herewith a *Lachesilla* species with genitalia strongly reminiscent of a recently discovered male of *Nadleria*, both occurring in northern South America (García Aldrete, in press).

Measurements, of lengths of right hand appendages mounted in Euparal, are in microns. The following abbreviations are used for parts measured: FW: fore wing; HW: hind wing; F: femur; T: tibia, t1 and t2: tarsomeres of hind leg; f1 ... f11: flagellomeres f1 ... f11; IO: minimum distance between compound eyes; D: antero-posterior diameter of compound eye; d: transverse diameter of compound eye, PO: d/D (IO, D and d measured in frontal view of head, permanently mounted on a slide).

***Lachesilla trujillense* n.sp.**

Figs 1–4.

Male. Color (in 80% alcohol). Body dark reddish brown. Compound eyes black, ocelli clear, without pigmented centripetal cres-



Figs 1–4: *Lachesilla trujillense* n.sp. (Male): 1, Fore and hind wings. 2, Sensorium and prong of right paraproct. 3, Hypandrium (damaged), claspers and phallic apodemes. 4, Clunium (torn in the middle), and epiproct. Scales in mm. Figure 4 to same scale as Figure 3.

cents. Maxillary palps uniformly brown. Antennae and legs pale brown. Fore wing (Fig. 1) slightly dark, fumose; veins dark brown, those on distal half of wing with a slender brown wash along their length. Distal end of pterostigma ochre, much more pigmented than

rest of wing. Hind wing almost hyaline, with a brown wash along anterior edge, fading towards R1; R2+3 and Cu1 with a slender brown wash along their lengths. Membrane between Cu2 and wing margin pale brown. Abdomen with transverse, reddish brown, subcuticular bands, less conspicuous ventrally; genital segments dark brown.

Morphology. Vertex extended beyond compound eyes, slightly impressed; ocelli close together. Phallic apodemes (Fig. 3), fused to form an elongated baculum that widens posteriorly, each side extended into a membranous area, with elongated center pigmented. Claspers fused to sides of hypandrium, each terminating posteriorly in a digitiform process; postero-lateral corners almost straight; sides next to hypandrium with a slender, strongly sclerotized band; setae as illustrated (Fig. 3). Epiproct divided in two symmetrical halves, each projected posteriorly into an extremely long, acuminate process, bearing a tooth on outer edge, near the apex (Fig. 4). Paraprocts (Fig. 2), articulated to clunium; with elongate sensoria surrounded by a stout, sclerotized band; each with 8–9 trichobothria, one, on outer edge, without basal rosette. Paraproctal prong elongate, sclerotized; setae as illustrated. Clunium (Fig. 4), limited anteriorly by a wide, sclerotized band, with row of setae along its length.

Measurements. FW: 2702; HW: 2044; F: 530; T: 1012; t1: 371; t2: 128; ctt1: 21; P4: 121; f1: 368; f2: 300; f3: 265; f4: 191; f5: 116; f6: 98; f7: 92; f8: 90; f9: 79; f10: 84; f11: 103; IO: 313; D: 178; d: 116, IO/D: 1.75; PO: 0.65

Holotype (Male). Venezuela, Trujillo, old road, 44 km E Trujillo, 2526 m., 6.VIII.1988, Charles and Lois B. O'Brien, and Guillermo Wibmer (Instituto de Biología, UNAM., México).

Comments

L. trujillense n.sp. is close to *L. aldretei* Badonnel, from Colombia, and to two other undescribed *Lachesilla* from Brazil and from Perú, with which it shares a similar phallosome and epiproct with two elongated processes; in no other species, however, are these processes as spectacularly long and armed as in *L. trujillense* n.sp. In the undescribed Brazilian species the processes are shorter and stouter, each armed with a claw on the inner edge of each process. Fore wing veins with pigmentation somewhat similar, although not identical to the pattern of *L. trujillense* are shown by *L. rena* Sommerman, in the *pedicularia* group, and by several species in the *andra* and the *forcepe-*

ta groups (GARCIA ALDRETE, 1974a, 1974b; BADONNEL, 1955). A similar phallosome, and epiproct with long, acuminate, unarmed processes, is presented by *Nadleria mariateresae* García Aldrete (MS name, in press), from the Peruvian Amazonia.

Acknowledgements

I wish to thank Drs. Charles W. and Lois B. O'Brien, Florida A & M University, Tallahassee, Florida, U.S.A., for the gift of the specimen on which this paper is based.

References

- BADONNEL, A. (1955): *Psocoptères de l'Angola*. Publ. cult. Co. Diam. Ang. No. 26: 1–267.
- BADONNEL, A. (1986): *Psocoptères de Colombie (Insecta, Psocoptera)*. Missions écologiques du Professeur Sturm (1956 à 1978). Spixiana. 9: 179–223.
- BADONNEL, A. & GARCIA ALDRETE, A. N. (1979): *Nadleria, un nouveau genre de Lachesillidae (Psocoptera) du Brésil*. Nouv. Rev. Ent. 9: 3–8.
- BADONNEL, A. & GARCIA ALDRETE, A.N. (1980). *Description de Nadleria mockfordi n.sp., avec compléments sur le genre Nadleria et l'espèce Nadleria alpha Badonnel et García Aldrete (Psocoptera: Lachesillidae)*. Nouv. Rev. Ent. 10: 229–233.
- GARCIA ALDRETE, A. N. (1974a): *A classification above species level of the genus Lachesilla Westwood (Psocoptera: Lachesillidae)*. Folia Entomol. Mex. 27: 1–88.
- GARCIA ALDRETE, A. N. (1974b): *Lachesilla bilobata sp.nov. y L. chiapensis sp.nov., nuevas especies del grupo "andra" (Psocoptera: Lachesillidae)*. Rev. Soc. Mex. Hist. Nat. 35: 143–148.
- GARCIA ALDRETE, A. N. (in press). *A new species of Nadleria (Psocoptera: Lachesillidae) from the Tambopata Reserved Zone, Madre de Dios, Perú*, Ent. News.
- MOCKFORD, E. L. (1985): *Systematics of the genus Nadleria (Psocoptera: Lachesillidae) with description of a new species and hypotheses on evolution of male external genitalia in the family Lachesillidae*. Ann. Entomol. Soc. Am. 78: 94–100.

Author's address:

Dr. Alfonso Neri García Aldrete
 Instituto de Biología, UNAM.
 Departamento de Zoología
 Apartado Postal 70–153
 04510 México, D. F. MEXICO