

Zeitschrift: Entomologica Basiliensia
Herausgeber: Naturhistorisches Museum Basel, Entomologische Sammlungen
Band: 16 (1993)

Artikel: New species of Chrysomelidae from South Asia from the Natural History Museum in Basel
Autor: Medvedev, L.
DOI: <https://doi.org/10.5169/seals-980491>

Nutzungsbedingungen

Die ETH-Bibliothek ist die Anbieterin der digitalisierten Zeitschriften auf E-Periodica. Sie besitzt keine Urheberrechte an den Zeitschriften und ist nicht verantwortlich für deren Inhalte. Die Rechte liegen in der Regel bei den Herausgebern beziehungsweise den externen Rechteinhabern. Das Veröffentlichen von Bildern in Print- und Online-Publikationen sowie auf Social Media-Kanälen oder Webseiten ist nur mit vorheriger Genehmigung der Rechteinhaber erlaubt. [Mehr erfahren](#)

Conditions d'utilisation

L'ETH Library est le fournisseur des revues numérisées. Elle ne détient aucun droit d'auteur sur les revues et n'est pas responsable de leur contenu. En règle générale, les droits sont détenus par les éditeurs ou les détenteurs de droits externes. La reproduction d'images dans des publications imprimées ou en ligne ainsi que sur des canaux de médias sociaux ou des sites web n'est autorisée qu'avec l'accord préalable des détenteurs des droits. [En savoir plus](#)

Terms of use

The ETH Library is the provider of the digitised journals. It does not own any copyrights to the journals and is not responsible for their content. The rights usually lie with the publishers or the external rights holders. Publishing images in print and online publications, as well as on social media channels or websites, is only permitted with the prior consent of the rights holders. [Find out more](#)

Download PDF: 13.08.2025

ETH-Bibliothek Zürich, E-Periodica, <https://www.e-periodica.ch>

| | | | | |
|--------------------------|----|---------|------|----------------|
| Entomologica Basiliensia | 16 | 359–376 | 1993 | ISSN 0253-2484 |
|--------------------------|----|---------|------|----------------|

New species of Chrysomelidae from South Asia from the Natural History Museum in Basel

by L. Medvedev

Abstract: The following genera of Chrysomelidae new to science are described: *Pagriella* (Eumolpinae) and *Luperaria* (Alticinae). The following species of Chrysomelidae new to science are described: *Zeugophora brancuccii* (Nepal), *Zeugophora wittmeri* (Kashmir) from Zeugophorinae, *Paracrothinium rufus* (China), *Pagriella marginata* (Vietnam), *Hyperaxis brancuccii* (Nepal) from Eumolpinae, *Apophyllia samoderzhenskovi* (Nepal), *A. himalayana* (Nepal, India) from Galerucinae, *Sebaethe bocaki* (China), *S. ornatus* (China), *Taizonia tulva* (India, Nepal), *Hespera elegans* (China), *H. mimica* (Bhutan), *Aphthona postmaculata* (India), *Longitarsus flavicollis* (Pakistan), *Crepidoderoides suturalis* (China), *Crepidodera ovata* (Bhutan), *Lipromima ornata* (Sikkim), *L. confusa* (China), *Pseudoliprus chinensis* (China), *Podagricomela nigripes* (India), *Chaetocnema himalayana* (India), *Luperaria elongata* (China) from Alticinae, *Callispa submarginata* (China), *C. himalayana* (Nepal), *Dactylispa bulbifera* (India) from Hispinae.

A key for Zeugophorinae of Himalaya is proposed.

Key words: Coleoptera Chrysomelidae – South Asia *Zeugophora*, *Paracrothinium*, *Pagriella*, *Hyperaxis*, *Apophyllia*, *Sebaethe*, *Taizonia*, *Hespera*, *Aphthona*, *Longitarsus*, *Crepidoderoides*, *Crepidodera*, *Lipromima*, *Pseudoliprus*, *Podagricomela*, *Chaetocnema*, *Luperaria*, *Callispa*, *Dactylispa* – systematics – new genera – new species.

Thanks to amiability of Dr. M. Brancucci and Dr. W. Wittmer I have received a nice opportunity to examine large materials of Chrysomelidae from Himalaya, China and Vietnam. In this article I describe 2 new genera and 25 new species from these regions. All types are deposited in the above mentioned museum, duplicate para-types are in the author's collection.

***Zeugophora* (*Pedrillia*) *wittmeri* n.sp.**

Light fulvous, antennae except two basal segments, apices of femora, tibiae and tarsi black.

Head shining, finely punctured, with smooth central stripe; clypeus at least 3 times as broad as long. Antennae long and thin, segment 3 more than twice as long as the second, segments 8–10 twice as long as broad. Prothorax 1.4 times as broad as long, with broadly rounded lateral tubercles, densely punctured. Elytra with dense punctures, more coarse than on prothorax. Length of body 3.4–3.7 mm.

Holotype and 42 paratypes: Kashmir: Daksum, 9–13.VII.1976, 2400–2700 m, W. Wittmer. This species was erroneously determined as *Z. indica* Jac. (LOPATIN, 1984).

***Zeugophora (Pedrillia) brancuccii* n.sp.**

Reddish fulvous with black antennae and legs; 1–2 basal antennal segments, bases of mid and hind femora and usually fore femora reddish fulvous.

Head dull, finely punctured, with smooth central stripe; clypeus a little more than twice as broad as long. Antennae short, with thickened 5–11 segments, segment 3 about 1.5 times as long as the second, preapical segments as broad as long or slightly transverse. Prothorax 1.5 times as broad as long, lateral tubercles broadly rounded, surface with strong dense punctures. Elytra with dense punctures, more coarse than on prothorax.

Length 3.7–4.2 mm.

Holotype: East Nepal: Arun Valley, Chichila, 31. V. 1983, 1950 m, M. Brancucci; Central Nepal: Chitra, 19. IX. 1978, 1800–2300 m, B. Bhaktra, 1 paratype; Sheopuri, N. Kathmandu, 27. VI. 1980, 1800–2500 m, C. Holzschuh, 1 paratype; East Nepal: Hillo, 28. IV. 1988, S. Bily, 1 paratype.

A key for Zeugophorinae of Himalaya

- 1(2) Body long and narrow. Supraocular furrows deep and sharp. Black, elytra dirty fulvous with more or less darkened suture. Fore and hind margins of prothorax more or less red. Length 4.8–7 mm. Sikkim. Assam.

***Pedrilliomorpha atrosuturalis* Pic**

- 2(1) Body more short and plump, elytra not very elongate. Supraocular grooves usually feeble or indistinct (*Zeugophora*, subg. *Pedrillia*).
- 3(12) Upperside fulvous or flavous.
- 4(11) Underside fulvous or flavous.
- 5(8) Legs fulvous.
- 6(7) Entirely fulvous with black antennae. Antennae: segment 3 twice as long as 2. Length 4–5 mm. India.

***Z. indica* Jacoby**

- 7(6) Entirely fulvous with black vertex and apices of antennae.

- Antennae: 3 about 1.5 times as long as segment 2. Length 3–3.2 mm. Kumaon. **Z. parva** Crowson
- 8(5) Legs more or less black.
- 9(10) Apices of femora, tibiae and tarsi black. Antennae: segment 3 twice as long as 2; segments 8–10 twice as long as broad. Length 3.4–3.7 mm. Kashmir. **Z. wittmeri**, n.sp.
- 10(9) Legs black with fulvous bases of femora, often fulvous. Antennae: segment 3 about 1.5 times as long as 2, segments 8–10 as long as broad. Length 3.7–4.2 mm. Nepal. **Z. brancuccii**, n.sp.
- 11(4) Underside, legs except fore femora and antennae except 2 basal segments black. Antennae: segment 3 almost twice as long as 2, segments 8–10 slightly elongate. Prothorax with lateral tubercles large, lobe – like, forming a right angle behind. Length 4–5 mm. Northern India, Nepal. **Z. longicornis** Westwood
- 12(3) Upperside more or less black.
- 13(14) Elytra black with pale flavous median band. Underside and hind femora black, antennae fulvous. Length 4.5–5 mm. Sikkim, Assam, Nepal. **Z. pallidicincta** Gressitt
- 14(13) Prothorax black, elytra reddish brown, underside and legs black. A specimen from Nepal has head and apices of elytra black, venter fulvous. Length 4–5 mm. Thailand, Laos, ? Nepal. **Z. maai** Kimoto & Gressitt

Paracrothinium rufus n.sp.

Dark reddish brown; antennae except basal segments, apices of femora, tibiae and tarsi black. Pubescence of upperside white.

Head strongly punctured, with short sparse pubescence. Antennae about half of body length, with segments 3–11 elongate, thin and more or less subequal. Prothorax 1.5 times as broad as long, with side margins rounded and more or less undulate, fore and hind angles acute, surface densely punctured. Elytra with strong and dense punctures, not arranged in rows, without basal convexity. Femora not toothed, claws appendiculate.

Length of body 8.2–8.4 mm.

Holotype: China; Sichuan, Mt. Emei, 800–1050 m, 5–19.V.1989, L. Bocák; same locality, 500–1200 m, 4–18.V.1989, Kolibač, 1 paratype.

Near *P. collare* Gressitt & Kimoto, 1982, differs in the absence of metallic coloration.

Pagriella n.gen.

Head sulcate above eyes. Prothorax margined on sides, anterior margin of proepisternum straight, proepisternal sutures distinct. Elytra with regular rows of punctures. Upperside glabrous. Mid and hind tibiae emarginate apically, femora not toothed, tarsal claws appendiculate. Pygidium with a well-defined median groove, having a longitudinal ridge in the middle.

Similar in all main features with *Pagria* Lefevre 1884, but differs immediatly in an unusual structure of a pygidium.

Generotype: *Pagriella marginata* n.sp.

Pagriella marginata n.sp.

Pale fulvous, antennae except basal segments and tarsi black, elytra paler than prothorax, a common basal triangle, epipleurae and narrow lateral and sutural margins black.

Head shining, with strong, but very sparse punctures, especially on vertex. Antennae with segments 3–11 elongate and almost equal in length. Prothorax 1.7 times as broad as long, obtusely angulate in a basal third, with large sparse punctures, almost impunctured on sides and near fore angles (except a row of punctures along all margins). Elytra with distinct humerus and very weak basal convexity; rows of punctures weakened behind middle, especially on sides. Propleurae without punctures.

Length of body 2.7–3.4 mm.

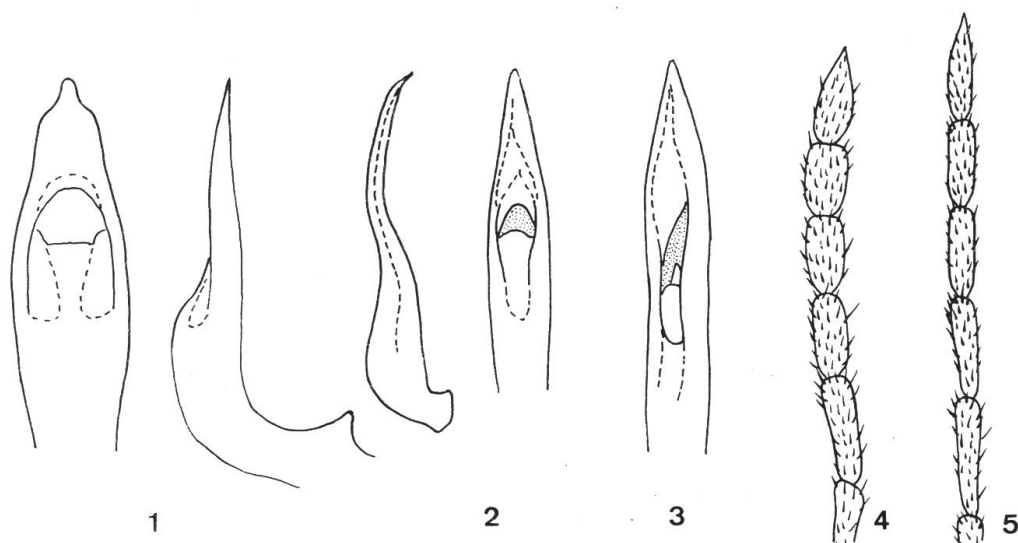
Holotype and 2 paratypes: Vietnam, Tam Dao, 900 m, 6.V. 1989, L. Medvedev; same locality, 20–27.VI.1990, A. Olexa, 8 paratypes.

Hyperaxis brancuccii n.sp.

Fig. 1.

Dark reddish fulvous to pitchy, upperside covered with dense yellow or white scales, underneath mostly with white scales.

Head punctured, with sparse hairs on clypeus and dense scales on frons and vertex. Antennae about half of body length, with 5 apical segments slightly thickened, basal segments thin and long, the 3rd segment is the longest. Prothorax almost subquadrate, 1.1 times as broad as long, surface uneven, with distinct impressions near fore



Figs 1–5: 1–3: Aedeagus dorsal and lateral of: 1, *Hyperaxis brancuccii* n.sp. 2, *Apophyllia samoderzhenkovi* n.sp. 3, *A. himalayana* n.sp. 4–5: Apical segments of antennae of: 4, *Apophyllia samoderzhenkovi* n.sp. 5, *A. himalayana* n.sp.

angles and more feeble ones in a laterobasal area. Punctures coarse, interspaces narrow and rugose, lateral margins not serrate. Scutellum subquadrate, slightly narrowed to behind. Elytra 1.5 times as long as broad, with acute and prominent humeral tubercles and uneven surface, incised on apex, with acute sutural angle; punctures deep and strong, partly arranged in irregular rows, mostly posteriorly near suture. Scales of upperside long, adpressed, covering practically all surface; erect scales or bristles absent. All femora with small acute tooth, mid femora distinctly more short and thin than fore and hind ones, mid and hind tibiae with 2 spurs. Aedeagus fig. 1.

Length of body 6.4–8.5 mm.

Holotype: ♂ Nepal: Mechi, Gorza-Dobhan, 2100–700 m, 6.VI.1985, M. Brancucci; Koshi, Waku-Sakranti-Thaklung, 1600–2200–1500 m, 10.VI.1985, M. Brancucci, 1 paratype; Kathmandu Valley, Burhanilkanth, 1440–1650 m, 16.VI.1983, M. Brancucci, 1 paratype; Kathmandu Valley, Godavari, 1500 m, 22–25.VI.1983, M. Brancucci, 1 paratype.

Differs well in the absence of erect bristles and large size.

***Apophyllia samoderzhenkovi* n.sp.**

Figs 2,4.

Body black, anterior part of head, 2–3 basal segments of antennae, all margins of prothorax and legs fulvous or dark fulvous. Pubescence of upperside silvery white, very short.

Head densely punctured, punctures large, interspaces very narrow, carinate. Antennae as long as body, the 3rd segment twice as long as the second, the 4th is the longest, 3 apical segments slightly shortened, but more thick than preceeding ones (fig. 4). Prothorax 1.7–1.8 times as broad as long, with maximal width just before middle, surface without distinct central groove, with large oblique lateral impressions, finely and densely punctate and granulate. Elytra densely punctured. Aedeagus fig. 2.

Length of male 4.4–4.8 mm, of female 5–5.5 mm.

Holotype ♂ and 6 paratypes; Nepal, Dhawalagiri Myagdi Distr., Kali-Gandaki, Khola Tatopani, 1100–1400 m, 14–17.VI.1986, C. Holzschud; same locality, 1100–1200 m, 22–24.V.1984, B. Bhakta, 2 paratypes.

Near *A. pallipes* Jacoby 1892 and *A. assamensis* Jacoby 1891, differs in having dark fulvous margins of black prothorax and structure of aedeagus, which is carinate on underside and quite straight in a lateral view. Species is dedicated to specialist of oriental Galerucinae Dr. E. Samoderzhenkov.

***Apophyllia himalayana* n.sp.**

Body black, 2–3 basal segments of antennae, knees and trochanters dark fulvous, elytra dark violaceous blue or blue-green, sutural area sometimes aeneous. Pubescence of upperside silvery white.

Head coarsely punctured, punctures large, interspaces narrow, frontal tubercles shining, impunctured. Antennae more long, than 3/4 of body length, the 3rd segment twice as long as the second, 3 apical segments are shortened, but not thicker than preceeding ones (fig. 5). Prothorax 1.7–1.8 times as broad as long, with the maximal width before middle, with distinct central groove and feeble lateral depressions, densely punctured, more or less granulate near hind margin. Elytra densely punctured. Aedeagus fig. 3.

Length of male 4.7–4.9 mm, of female 5.4–5.9 mm.

Holotype: Nepal: Arun Valley, Lamobagar Gola, 1400 m, 28–31.V.1980, C. Holzschuh; Arun Valley, Hum-Hedangna, 750–1500 m, 24–26.V.1980, C. Holzschuh, 1 ♂, 1 ♀ paratypes; Kali Gandaki Khola, Tatopani, 1100–1400 m, 12–14.V.1984, C. Rai, 1 ♀ paratype. India, Darjeeling Distr.: Kalimpong: Chibo, 900 m, 27. IV.1987, C. Rai, 1 ♂ paratype; Low Bombusty, 950 m, 28.IV.1987, C. Rai, 1 ♀ paratype.

Differs from *A. nilakrishna* Maulik, 1928, with elongate, not widened 5–11 antennal segments and simple abdomen of male, from *A. schawalleri* L. Medvedev, 1990, with structure of abdomen and aedeagus of male and dark fulvous knees.

***Sebaethe bocaki* n.sp.**

Fig. 6.

Body black with blue elytra, basal segments of antennae and tibiae sometimes pitchy or reddish.

Vertex with large deep punctures throughout or mostly at sides. A middle lobe of last abdominal sternite in male broadly rounded and grooved. Aedeagus (fig. 6) distinctly constricted before apex, apical part of underside with 3 impressions divided with sharp ridges; all surface before constriction smooth.

Length 3.2–4.3 mm.

Holotype ♂ and 6 paratypes: China, N Yunnan: Lijiang, 2600 m, 30.VI.–2.VII.1990, L. & M. Bocak.

This species is almost identical with *S. plagioderoides* Motschulsky, 1860, differs however in form of aedeagus, which in the latter species is not constricted, with other form of impressions on underside and with longitudinal strigosity before these impressions; a middle lobe of last sternite is triangular with acute apex. The size of the latter species is usually 4–5.3 mm and prothorax is as a rule metallic blue, not black.

***Sebaethe ornatus* n.sp.**

Fig. 7.

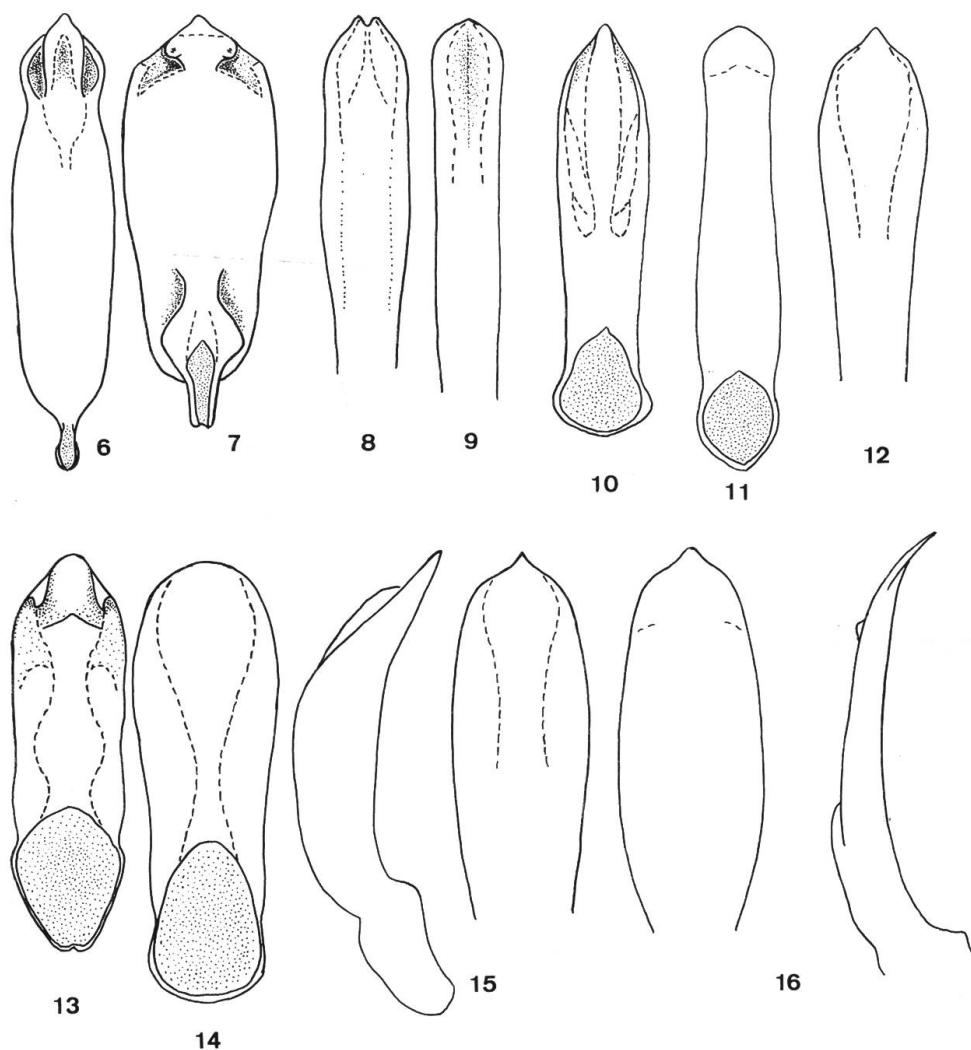
Body dark brown, elytra with large elongate pale yellow patch, which occupies most part of elytral surface.

Head impunctured, antennae about half of body length, 3rd antennal segment 1.5 time as long as the 2nd. Prothorax impunctured. Elytra finely punctured. The first segment of fore and mid tarsi widened in male. Aedeagus (fig. 7) with triangular apex and 2 grooves on underside before apex.

Length of body 4.2–4.4 mm.

Holotype: China, Yunnan: Kunming (Western Hills), 9.VII.1990, L. & M. Bocak; N Yunnan: Lijiang, 2600 m, 30.VI.–2.VIII.1990, L. & M. Bocak, 1 ♀ paratype.

Near *S. lusca* Fabricius, 1801, differs with enlarged elytral patch, unicolorous antennae and grooves on underside of aedeagus.



Figs 6–16: Aedeagus ventral and lateral of: 6, *Sebaethe bocaki* n.sp. 7, *S. ornatus* n.sp. 8, *Aphithona postmaculata* n.sp. 9, *Crepidoderoides suturalis* n.sp. 10, *Crepidodera ovata* n.sp. 11, *Lipromima ornata* n.sp. 12, *L. confusa* n.sp. 13, *Pseudoliprus chinensis* n.sp. 14, *Podagricomela nigripes* n.sp. 15, *Chaetocnema himalayana* n.sp. 16, *Luperaria elongata* n.sp.

Taizonia fulva n.sp.

Dirty fulvous, antennal segments 3–10 pitchy brown.

Head schining, with feeble microsculpture, distinctly punctured on clypeus and sparsely on vertex. Frontal tubercles feeble, triangular. Antennae about half of body length, proportions of segments are as 9–6–6–5–6–7–7–7–7–7–10. Prothorax 2.5 times as broad as long, fore angles rounded, hind angles acute, lateral margin arcuate, with setigerous pore in the middle; surface shining, indistinctly punc-

tured, with thickened side margins. Scutellum very small, triangular. Elytra shining, smooth, with traces of microsculpture and numerous dark brown spots under cuticle. Epipleura broad. Wings absent. Metasternum triangular, slightly emarginate behind. Hind tibiae curved, spur long, but shorter as the first tarsal segment; outer margin of tibiae slightly serrate.

Length of body 1.9–2 mm.

Holotype ♂; India, Darjeeling Distr.; Kafer, 1360 m, 29.VII.1980, B. Bhaktra; same region, Monshong, 1400 m, 23.XI.1980, B. Bhaktra, 1 paratype; same region, Pedong, 3.XI.1980, B. Bhaktra, 3 paratypes; East Nepal, Chandan Bari, 3350 m, 26.VI.1979, B. Bhaktra, 1 paratype. 2 paratypes in author's collection.

Near *T. castanea* Gruev, 1985, from China, differs in light coloration of body and other coloration of antennae.

Hespera elegans n.sp.

Upperside metallic green, antennae, legs and underside black, bases of tibiae more or less pitchy reddish. Pubescence whitish, suberect, sparse on head, moderately dense on prothorax and elytra.

Vertex shining, with a few punctures. Antennae about 2/3 of body length, proportions of segments as 9–5–6–7–8–8–8–8–9–9–9. Prothorax with straight lateral margins, narrowed to base, 1.2 times as broad as long, surface shining, densely punctured. Elytra twice as long as broad at base, broadened to behind, truncate at apex, without humeral tubercle, densely punctured. Wings absent.

Length of body 2.8–2.2 mm.

Holotype and 16 paratypes: China, N. Yunnan: Lijiang, 2600 m, 30.VI.–2.VII.1990, L. & M. Bocak, all specimens seems to be females.

Near *H. bengalensis* Scherer, 1969, but smaller, apterous, with truncate apices of elytra and rather dense pubescence of upperside. From *H. brachelytra* Chen & Wang, 1984, differs in green, not aeneous upperside.

Hespera mimica n.sp.

Fulvous; scutellum, narrow sutural stripe and underside pitchy black, apical antennal segments and epipleurae more or less darkened.

Head shining, frontal tubercles subquadrate, vertex with a few setigerous punctures. Antennae about $2/3$ of body length, proportions of segments as 9–5–5–5–6–6–6–6–6–9. Prothorax 1.5 times as broad as long, narrowed to base, with straight lateral margins, surface shining, distinctly punctured and very sparsely pubescent. Elytra with sparse erect hairs, distinctly punctured, truncate at apex.

Length of body 3–3.1 mm.

Holotype ♂: Bhutan; vicinity of Thimphu, VIII.1975; Charee, 16.VIII.1975, Khandu Dukpa, 2 ♀ paratypes.

Very similar at *H. schawalleri* L. Medvedev, 1990, but body smaller, upperside with very sparse pubescence, prothorax distinctly trapeziform etc.

***Aphthona postmaculata* n.sp.**

Fig. 8.

Body fulvous; hind part of head, antennae except basal segments, basal margin of elytra, sutural stripe, shortened behind, small humeral spot, rather large round spot before apex of elytra and apical half of hind femora black or dark pitchy; underside more dark than upperside.

Interantennal space with convex blunt carina, frontal tubercles triangular, feebly delimited behind, vertex excavated on each side near eyes, microsculptured. Antennae about $2/3$ of body length, segments 2 and 3 subequal. Prothorax 1.5 times as broad as long, without any depressions, finely punctured. Elytra widened to behind, shining, finely confusedly punctured. Segment 1 of hind tarsus thin and long, about 0.4 of tibia length. Segment 1 of fore and middle tarsi elongate and feebly widened in male. Aedeagus (fig. 8) with bidentate apex, slightly grooved on underside before apex.

Length of body 2.3–2.4 mm.

Holotype ♂ and 4 paratypes: India, Uttar Pradesh: Ranikhet-Garampani, 1800–2000 m, 5.VI.1978, W. Wittmer; Bhimtal, 1400–1500 m, 1–15.V.1978, W. Wittmer, 8 paratypes.

Near *A. binotata* Baly, 1876, differs in the absence of basal impression of prothorax and other elytral pattern.

***Longitarsus flavicollis* n.sp.**

Body black, basal segments of antennae, prothorax, fore legs, knees and tarsi of mid and hind legs fulvous.

Head shining, with acute interantennal ridge and almost indistinct frontal tubercles, supraocular grooves are developed, beginning

from frontal tubercles; vertex with very fine and sparse punctures, with a group of large punctures near eye. Antennae about 2/3 of body length, segments 2 and 3 subequal, more short than 4th. Prothorax 1.5 times as broad as long, convex, with very small sparse punctures. Elytra ovate, more or less truncate at apex, not covering pygidium, without humeral tubercles, twice as wide as prothorax, punctures of surface much larger than on prothorax, moderately dense. Wings absent. Hind tibia straight, slightly widened at apex and denticulate along outer margin, spur almost as long as a width of tibia, tarsal segment 1 thin, about 0.6 of tibia length.

Length of body 3.4–3.7 mm.

Holotype and paratype: Pakistan; Nothia Gali, Hazara, 8200', 14.VI.1974, C. Baroni Urbani, 2 ♀

Differs from all oriental species with unusual for the genus bicolorous upperside.

***Crepidoderoides suturalis* n.sp.**

Fig. 9.

Body fulvous or reddish fulvous, 3 or 4 apical segments of antennae, vertex and rather broad, badly limited sutural stripe on the elytra pitchy brown; underside black. Sutural stripe usually occupies one or two interspaces of punctured rows and widened to base.

Head punctured on vertex, frontal tubercles narrow and elongate, extending to interantennal space and not touching each other, delimited behind with supraocular grooves; sides of vertex excavated above eye, as in *Neorthaea*. Antennae with apical segments feebly widened, their proportions are as 10–6–6–7–7–8–8–9–9–9–11. Prothorax 1.5 times as broad as long, with sides slightly rounded, basal groove deep and straight, surface densely punctured, except basal groove and basal margin. Elytra 1.5 times as long as broad, more or less parallel, humerus feeble but distinct, punctured rows are quite regular, not weakened up to apex, interstices flat, shining, finely punctured. The first segment of pro- and mesotarsus of male slightly widened. Claws with a small tooth. Aedeagus (fig. 9) thin and elongate with a longitudinal groove in apical part of underside.

Length of body 2.3–2.4 mm.

Holotype and 1 paratype; China, Sichuan Prov.: Mt. Emei, 500–1200 m, 4–18.V.1989, S. & J. Kolibáč; same locality, 1000 m, 4–20.V.1989, V. Kubán, 3 paratypes.

Differs from *C. chui* Chujo, 1942, in having dark sutural stripe and toothed, not bifid tarsal claws.

Crepidodera ovata n.sp.

Fig. 10.

Metalic green or bluish green, antennae and legs fulvous, hind femora black or darkened, apices of antennae slightly darkened.

Body ovate, not so elongate as usually in the genus. Head with deep supraocular grooves and small triangle frontal tubercles, not touching each other; interantennal space broad and flat, vertex impunctured, with setigerous pore on each side. Prothorax 1.5 times as broad as long, with side margins almost straight, basal groove feeble and broad, surface densely punctured. Elytra 1.3 times as long as broad, much wider than prothorax, ovate, with small humerus and not quite regular rows of punctures, especially in basal part near suture.

Aedeagus fig. 10.

Length of body 2.5–2.8 mm.

Holotype: Bhutan: Nobding, 41 km E Wangdi Phodrang, 2800 m, 18.VI.1972; 21 km E Wangdi Phodrang, 1700–2000 m, 15.VI.1972, 2 paratypes; 37 km from Phuntsholing, 21–23.V.1972, 1 paratype; materials of Bhutan Expedition, Nat.-Hist. Mus. Basel.

Lipromima ornata n.sp.

Fig. 11.

Reddish fulvous, elytra with a round spot at base near scutellum and another more or less transverse behind middle black; basal spots sometimes united in a common triangular patch.

Head smooth, impunctured, with sparse and long erect hairs on vertex, clypeus and labrum; supraocular grooves arcuate, very deep; frontal tubercles small, triangular, not very distinct. Antennae more long than half of body, with segments more or less subequal. Prothorax 1.5 times as broad as long, 0.75 times as broad as base of elytra, slightly cordiform, with setigerous pore behind fore angles, surface shining, with sparse deep punctures and erect hairs, mostly along margins, basal groove flat and broad, feebly limited on sides, with short longitudinal impressions. Elytra with distinct humerus and basal convexity, rows of large punctures are quite regular, interspaces narrow and smooth.

Aedeagus fig. 11.

Length of body 2–2.5 mm.

Holotype ♂ and 1 paratype: India, Darjeeling distr.: Kalimpong, Iharpal, 1355 m, 13.IV.1984, C. I. Rai; Pala, 900 m, 3.IV.1983, B. Bhakta, 1 paratype; Pudung, 700 m, 27.IX.1981, B. Bhakta,

1 paratype; India, W Sikkim: Pang Thang, 1700 m, 21.X.1985, C I. Rai, 1 paratype.

Near *L. minuta* Jacoby, 1885, from East Asia, but much larger and with additional spot on base of elytra.

Lipromima confusa n.sp.

Fig. 12.

Body fulvous, apical antennal segments slightly darkened.

Head with sharp supraocular grooves and distinct interantennal ridge, frontal tubercles absent, vertex with large punctures, bearing long erect hairs. Antennae about 2/3 of body length, with thickened 6 apical segments, proportions of segments as 12–11–6–9–11–10–10–10–10–10–15. Prothorax 1.3 times as broad as long, feebly cordiform, with deep narrow basal groove, indistinctly limited on sides; surface before groove with dense large punctures, side margins finely denticulate. Elytra 1.7 times as long as broad, parallel, elytral rows of strong punctures are quite confused in the basal third near suture and not quite regular behind humerus.

Aedeagus fig. 12.

Length of body 2.6–2.8 mm.

One specimen has a darkened prothorax and suture, with length only 2.3 mm, but in all morphological features it is quite identical with typical form.

Holotype ♂ and 1 paratype; China, N. Yunnan, 30 km N of Lijiang, 3000 m, 3.VII.1990, L. & M. Bocák; Lijiang, 2600 m, 30.VI.–2.VII.1990, L. & M. Bocák, 2 paratypes.

This species differs well in partly confused elytral punctures as well as in unspotted upperside.

Pseudoliprus chinensis n.sp.

Fig. 13.

Body fulvous, vertex and scutellar area of elytra usually more or less darkened.

Head with supraocular grooves weakened near eyes, vertex shagreened, with a few large setiferous punctures. Antennae about 0.7 of body length, with all segments elongate and more or less subequal. Prothorax 1.3 times as broad as long, moderately constricted behind middle, with deep and arched transverse grooves, surface shagreened and distinctly punctured, punctures rather large, but not deep. Scutellum with setiferous punctures at apex. Elytra with distinct horizontal and vertical part and elevated scutellar area, all rows of

punctures are quite regular, a short scutellar row not anastomosing with next one. Pygidium large, bended to underside. Abdominal sternites 2–4 narrowed in the middle, 4th sternite with a tubercle in the middle, 5th sternite with longitudinally grooved central part (fig. 17). Aedeagus short and plump, with rounded apex and complicated sculpture of underside (fig. 13). Length of body 2.2–2.4 mm.

Holotype ♂ and 3 paratypes: China, Sichuan: Mt. Emei, 1000 m, 4–20.V.1989, V. Kuban.

Near *P. kurosawai* Nakane, 1958, from Japan, differs in other structure of abdominal segments and peculiar sculpture of aedeagus.

Podagricomela nigripes n.sp.

Fig. 14.

Body fulvous, 5–11 antennal segments and legs black.

Head shining, frontal grooves deep, vertex with a few small punctures, bearing short hairs. Antennae about half of body length, proportions of segments as 17–10–9–10–11–12–13–13–13–21. Prothorax twice as broad as long, narrowed anteriorly, with feebly rounded side margins, surface shining, finely punctured. Elytra with regular rows of large punctures; interstices smooth, shining, flat in the inner part, more or less convex laterally. Segment 1 of fore and middle tarsi triangularly widened in male.

Aedeagus fig. 14.

Length of body 3.2–4 mm.

Holotype (male) and 9 paratypes: India, Darjeeling dist., Magghal Dhara, 1200 m, 26.IV.1983, B. Bhakta.

Near *P. costipennis* Chen, 1934, from Tonkin, differs in having elytral interspaces not costate.

Chaetocnema himalayana n.sp.

Fig. 15.

Upperside metallic blue or greenish blue, underside dark piceous to black, hind femora with metallic lustre, basal segments of antennae and bases of fore and mid tibiae red brown.

Vertex with extremely fine punctures, without any large punctures, ocular grooves curved twice, clypeal carina broad and flattened. The third antennal segment almost 1.5 times as long as the second and more long than the fourth. Prothorax finely and moderately dense punctured, without basal row of punctures. Elytra broadly ovate, punctures in rows more large, than on prothorax, interstices smooth, impunctured, flat on dorsum, moderately, convex near side margin.

Aedeagus fig. 15.

Length of body 3.1–3.7 mm.

Holotype ♂ and 1 paratype: India, Darjeeling distr.: Makal Dara, 31.V.1987, B. Bhakta; Gurubathan, 350 m, 15–19.V.1986, B. Bhakta, 1 paratype; Namthing-Lokapul, 1450 m, 23.VII.1984, C. I. Rai, 1 paratype; Kalimpong, Nunsong, 890 m, 18.VII.1984, C. I. Rai, 3 paratypes; Kalimpong, Maelli, 380 m, 18.VII.1978, B. Bhakta, 1 paratype.

Near *Ch. melonae* Chen, 1934, from Tonkin, but larger, with third antennal segment more long, elytral interstices impunctured, legs more dark.

Luperaria n.gen.

Figs 18–19.

Body narrow, elongate, apterous. Frontal tubercles (fig. 18) narrow and elongate, with their anterior processes prolonged to interantennal space, delimited behind with grooves, without supraocular lines. Interantennal space broad and flat, clypeus short and transverse, divided from frons with depressed line, in lateral sight forms an obtuse angle with frons. Prothorax as long as broad (male) or feebly transverse (female), feebly depressed along basal margin, but without distinct basal groove. Elytra elongate ovate, with small humeral tubercle, confusedly punctate, with tendency to form rews and very feeble longitudinal ridges, with sparse fine hairs on apical edge. Fore coxal cavities narrowly open, prosternum narrow, moderately widened behind. Hind femora feebly thickened, tibiae cylindrical, without any ridges on outer margin, short spurs. The third tarsal segment bilobed. Claws of male split at apex and feebly dentate at base (fig. 19), of female – with large basal tooth.

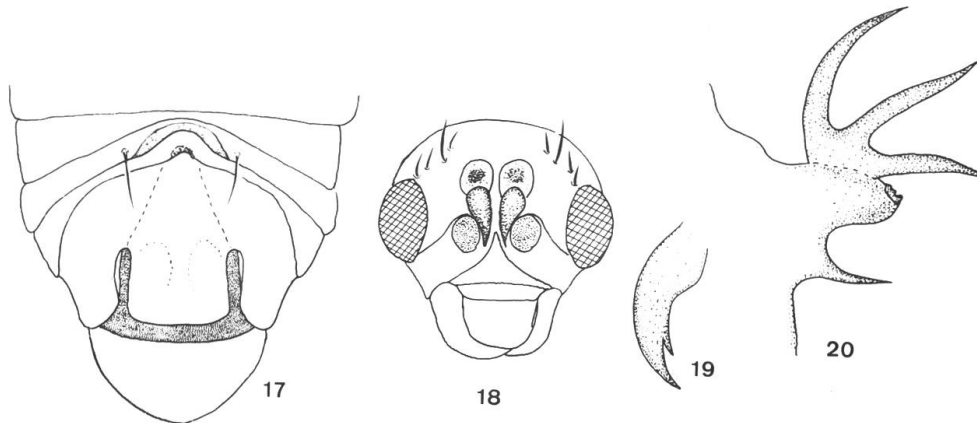
Near *Luperomorpha* Weise 1887, differs in structure of head, basal depression of prothorax, absence of wings and split claws of male. From *Trachyaphthona* Heikertinger 1924 differs in quite other structure of short and transverse clypeus and broad interantennal space.

Luperaria elongata n.sp.

Fig. 16.

Male. Greenish blue, antennae black with fulvous basal segments, anterior part of head, prothorax and legs fulvous, tarsi more or less darkened, epipleura more or less reddish.

Vertex with sparse setiferous punctures. Antennae about 3/5 of body length, proportion of segments as 26–12–18–20–19–18–18–17–17–17–21. Prothorax 1.2 times as broad as long, narrowed to



Figs 17–20: 17, Abdomen of *Pseudoliprus chinensis* n.sp. 18–19: *Luperaria elongata* n.sp.: 18, head. 19, claw. 20, Lateral spines of prothorax of *Dactylispa bulbifera* n.sp.

base, with straight side margins, impunctured. Elytra shagreened, finely and unevenly punctured, epipleura very broad, narrowed to behind and disappeared just before apex. The first tarsal segment of fore and mid tarsi widened.

Aedeagus fig. 16.

Length of body 4.2 mm.

Female. Body black with dark greenish blue elytra, antennal segments 2 and 3 dark red. Prothorax 1.3 times as broad as long, elytra more broad. Length of body 3.8–4.2 mm.

Holotype and 2 paratypes: China, N. Yunnan; 10 km N of Lijiang, 3000 m, 3.VII.1990, L. & M. Bocák.

***Callispa submarginata* n.sp.**

Fulvous, antennae, tarsi and elytra black, explanate margin of elytra in basal 2/3 fulvous.

Body elongate, slightly widened to behind, 1.8 times as long as broad. Head impunctured, frons with triangular fore margin. Antennae with segments 2–10 subequal, about 1.6–1.8 times as long as broad. Prothorax with strong sparse punctures, feebly impressed on sides and before scutellum. Elytra 1.35 times as long as broad, with an explanate margin about 1/4 of elytron width, with regular rows on disc and confusedly punctured on an explanate margin.

Length of body 5.2–6 mm.

Holotype and 2 paratypes: China, Sichuan; Mt. Emei, 500–1200 m, 4–18.V.1989, S. & J. Kolibáč.

Differs well with unusual coloration of elytra, seems to be near indian *C. vittata* Baly, 1858.

***Callispa himalayana* n.sp.**

Fulvous or flavous, antennae, scutellum, underside and legs black.

Body very narrow and elongate, 2.5 times as long as broad. Head impunctured, frons with triangular fore margin. Antennae slightly thickened to apex, with segments 2–10 feebly elongate, segment 3 a little longer than the 2nd. Prothorax 1.2 times as broad as long, with 4 longitudinal depressions, provided with strong punctures and small transverse depression before scutellum. Elytra 1.9 times as long as broad, without explanate margin, with 10 regular rows of punctures.

Length of body 4.9–5.2 mm.

Holotype: Nepal: Dandapakhar, 1700 m, 7.VI.1976, W. Wittmer; India, Darjeeling Distr.: Chim-Khona (Ghum), 2200 m, 4.VI.1975, W. Wittmer, 1 paratype; Singmari-Bharapatea Bung, 10.V.1975, W. Wittmer, 1 paratype.

Differs from fulvous indian species with very narrow body and unexplanate side margin of elytra.

***Dactylispa bulbifera* n.sp.**

Fig. 20.

Fulvous or pale fulvous, 2 spots on prothorax, dorsal spines of elytra together with a thickened spines on posterolateral angle and sides of breast black.

Antennae not thickened to apex, segment 3 twice as long as 2. Prothorax flat, pubescent, densely punctured, with transverse basal depression and indistinct elongate elevation in the middle; fore margin with a pair of branching spines, a fore spine branching before apex, hind spine with very small spinules. Side margin with a finger-like protuberance, more or less globular on apex and with 3 spines, branching from a preapical part of protuberance; the fourth lateral spine placed just behind this protuberance (fig. 20). Elytra slightly widened to behind, with very narrow explanate margin, short yellow pubescence, surface with moderately long dorsal spines, humeral ridge with 3–4 short and 2–3 long spines, scutellar ridge usually with 6 short spines. Side margin with thin long spines, usually 10–11 before thick postero-lateral spine and about 10 behind it.

Length of body 4.5–5.2 mm.

Holotype: India, Uttar Pradesh: Sattal, 1400 m, 21.VI.1981, M. Brancucci; Nainital, 3.V.1978, 1800–2000 m, W. Wittmer, 1

paratype; Bhimtal, 1300–1500 m, 22.IV.1982, F. Smetaček, 1 paratype.

Differs from all known oriental species with unusual structure of prothoracic lateral spines.

Literatur

LOPATIN, I. (1984): *Chrysomelidae aus dem Himalaja*. Entom. Basiliensia, 9: 328–339.

Author's address:

Prof. Dr. Lev. N. Medvedev

Inst. Evol. Morphol. & Ecol. Anim.

Leninsky prospect 33

Moskva 117 071 Russia