

**Zeitschrift:** Entomologica Basiliensia  
**Herausgeber:** Naturhistorisches Museum Basel, Entomologische Sammlungen  
**Band:** 6 (1981)

**Artikel:** Description of a new Danacaea from Calabria (Italy) (Col., Dasytidae)  
**Autor:** Liberti, G.  
**DOI:** <https://doi.org/10.5169/seals-980725>

### **Nutzungsbedingungen**

Die ETH-Bibliothek ist die Anbieterin der digitalisierten Zeitschriften auf E-Periodica. Sie besitzt keine Urheberrechte an den Zeitschriften und ist nicht verantwortlich für deren Inhalte. Die Rechte liegen in der Regel bei den Herausgebern beziehungsweise den externen Rechteinhabern. Das Veröffentlichen von Bildern in Print- und Online-Publikationen sowie auf Social Media-Kanälen oder Webseiten ist nur mit vorheriger Genehmigung der Rechteinhaber erlaubt. [Mehr erfahren](#)

### **Conditions d'utilisation**

L'ETH Library est le fournisseur des revues numérisées. Elle ne détient aucun droit d'auteur sur les revues et n'est pas responsable de leur contenu. En règle générale, les droits sont détenus par les éditeurs ou les détenteurs de droits externes. La reproduction d'images dans des publications imprimées ou en ligne ainsi que sur des canaux de médias sociaux ou des sites web n'est autorisée qu'avec l'accord préalable des détenteurs des droits. [En savoir plus](#)

### **Terms of use**

The ETH Library is the provider of the digitised journals. It does not own any copyrights to the journals and is not responsible for their content. The rights usually lie with the publishers or the external rights holders. Publishing images in print and online publications, as well as on social media channels or websites, is only permitted with the prior consent of the rights holders. [Find out more](#)

**Download PDF:** 16.01.2026

**ETH-Bibliothek Zürich, E-Periodica, <https://www.e-periodica.ch>**

## Description of a new *Danacaea* from Calabria (Italy) (Col., Dasytidae)

by G. Liberti

Abstract: A new species of *Danacaea*, *D. scyllea* n. sp., is described from Aspromonte, Calabria, Italy and characteristics distinguishing it from related species are discussed.

### ***Danacaea scyllea* n. sp.**

Figs 1–2.

Description: A *Danacaea* with the pronotal hairs all parallel and pointing apically, belonging to the 1<sup>st</sup> group of SCHILSKY (1897). The aedeagus of *D. scyllea* (Figs 1–2) is clearly different from all others of this group (LIBERTI, 1978), mainly by its rounded apex, without deep emargination.

♂. Antennae rather short, distinctly clubbed, 3<sup>rd</sup> and 4<sup>th</sup> segments longer than wide, 5<sup>th</sup> segment a little longer than wide, 6<sup>th</sup>, 7<sup>th</sup> and 8<sup>th</sup> as wide as long, 9<sup>th</sup> and 10<sup>th</sup> wider than long. Forehead nearly flat, not impressed. Pronotal sides enlarged, fairly rounded, slightly angular. Elytra shorter (compared to the body length) than in related species (*ambigua* Muls., *aurichalcea* Küst., *trinacriae* Lib., *imperialis* Gené), a little enlarged in apical third; hairs whitish-yellow, rather short and thin, not obscuring dark green colour. Legs, antennae and mouth yellowish, antennal extremities darkened.

Length: 3–3.5 mm.

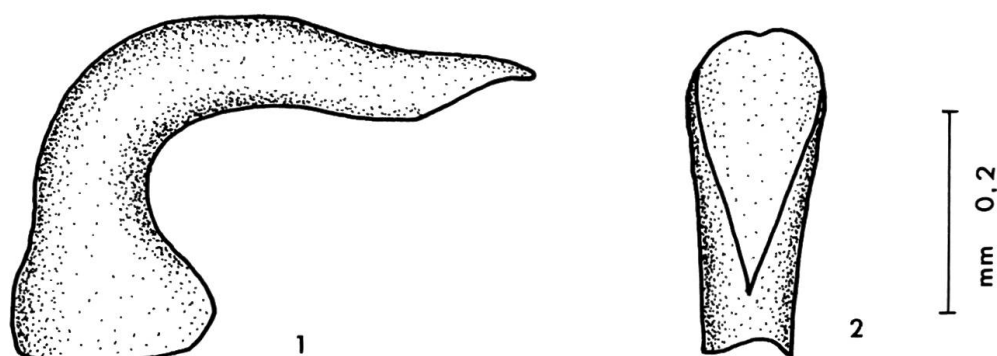
♀. Antennal segments with the same length/width ratio as in the male, but shorter and thicker. Elytra distinctly bellied. Overall body colour as in the male.

Length: 3.8–4.5 mm.

Types: Holotype ♂ and allotype ♀ (coll. W. Wittmer). Locality: Calabria, Sante Eufemia, leg. Paganetti. 1 paratype ♂ and 1 paratype ♀ (Museo di Storia Naturale, Milano), same locality. 1 paratype ♂ (Museo di Storia Naturale, Genova). Locality: Aspromonte (RC), Portella Zagaria 24/27.V.1971, leg. G. Bartoli.

Etymology: *scyllea* from a mythological creature related to the Aspromonte ancient history.

*Danacaea scyllea* n. sp. can be distinguished from related species as follow: From *D. aurichalcea* Küst. by the shorter elytra and by the shorter and wider antennae; the latter may be seen fairly well in antennal segments 5<sup>th</sup> to 7<sup>th</sup> of the female and 5<sup>th</sup> to 10<sup>th</sup> of the male; from



Figs 1–2: *Danacaea scyllea* n.sp., holotype. 1, Aedeagus, lateral aspect. 2, Aedeagus, ventral aspect.

*ambigua* Muls. by the less angular pronotal sides and the shorter elytra; and from *trinacriae* Lib., *leonardii* Lib. and *imperialis* Gené by the wider head, more bulging eyes, and sharper apex of the elytra. As usual in the genus *Danacaea*, an accurate determination must take into account the aedeagus.

All five specimens I have seen of this species came from Aspromonte, Calabria. Worth noting, up to now I have seen no other 1<sup>st</sup> group *Danacaea* from this locality.

### Bibliography

- LIBERTI, G. (1978): *Revisione delle specie italiane del genere Danacaea, primo gruppo*. Mem. Soc. Ent. Ital. 57: 29–45.  
SCHILSKY, J. (1897): In Küster H. C., Kraatz G. *Käfer Europas XXXIII*, 33 C, D, F.

Author's address:  
Dr. Gianfranco Liberti  
Via Ugo Bassi, 13  
I-20159 Milano