

Zeitschrift: Entomologica Basiliensia
Herausgeber: Naturhistorisches Museum Basel, Entomologische Sammlungen
Band: 4 (1979)

Artikel: The Galerucinae (Coleoptera: Chrysomelidae) of Nepal, Bhutan and Northern territories of India, in the Natural History Museum in Basel, I.
Autor: Kimoto, S.
DOI: <https://doi.org/10.5169/seals-980774>

Nutzungsbedingungen

Die ETH-Bibliothek ist die Anbieterin der digitalisierten Zeitschriften auf E-Periodica. Sie besitzt keine Urheberrechte an den Zeitschriften und ist nicht verantwortlich für deren Inhalte. Die Rechte liegen in der Regel bei den Herausgebern beziehungsweise den externen Rechteinhabern. Das Veröffentlichen von Bildern in Print- und Online-Publikationen sowie auf Social Media-Kanälen oder Webseiten ist nur mit vorheriger Genehmigung der Rechteinhaber erlaubt. [Mehr erfahren](#)

Conditions d'utilisation

L'ETH Library est le fournisseur des revues numérisées. Elle ne détient aucun droit d'auteur sur les revues et n'est pas responsable de leur contenu. En règle générale, les droits sont détenus par les éditeurs ou les détenteurs de droits externes. La reproduction d'images dans des publications imprimées ou en ligne ainsi que sur des canaux de médias sociaux ou des sites web n'est autorisée qu'avec l'accord préalable des détenteurs des droits. [En savoir plus](#)

Terms of use

The ETH Library is the provider of the digitised journals. It does not own any copyrights to the journals and is not responsible for their content. The rights usually lie with the publishers or the external rights holders. Publishing images in print and online publications, as well as on social media channels or websites, is only permitted with the prior consent of the rights holders. [Find out more](#)

Download PDF: 03.04.2026

ETH-Bibliothek Zürich, E-Periodica, <https://www.e-periodica.ch>

The Galerucinae (Coleoptera: Chrysomelidae) of Nepal, Bhutan and Northern Territories of India, in the Natural History Museum in Basel, I.

By S. Kimoto

Abstract: 37 species of Galerucinae (Chrysomelidae) collected in Nepal, Bhutan and northern territory of India are enumerated. *Pyrrhalta darjeelingensis* and *Lochmea maculata* are described as new species. *Galleruca scutellata* Hope is transferred to *Pyrrhalta*, and *Pyrrhalta tumida* Gressitt & Kimoto becomes a new synonym of this species. *Menippus dimidiaticornis* Jacoby is transferred to *Pyrrhalta*, and both *Gallerucella sericea* Weise and *Gallerotella garoana* Maulik become new synonyms of this species. *Leptarthra collaris* Baly is transferred to *Spitiella*, and *Spitiella auriculata* Laboissière becomes a new synonym of this species. *Sastra actipennis* is treated as a new synonym of *Sastroides purpurescens* (Hope). 18 species are photographed.

Pyrrhalta darjeelingensis n. sp. Fig. 1

Yellowish brown, with antennal segments and tarsi somewhat infusate in certain specimens.

Head with vertex closely impressed with shallow but distinct punctures, thickly covered with fine hairs; frontal tubercle distinctly raised, subquadrate with anterior angle acute, inserted between antennal insertions and separated to each other by a longitudinal line; surface convex, smooth, without any distinct puncture. Antenna slenderer, nearly $\frac{3}{4}$ as long as length of body, in preapical segments nearly three times as long as wide; first segment long, robust, somewhat clubshaped; second shortest, nearly $\frac{2}{3}$ as long as first; third longest, nearly $2\frac{1}{4}$ times as long as second; fourth slightly shorter than third; fifth nearly $\frac{3}{4}$ as long as fourth; sixth slightly shorter than fifth; seventh subequal to sixth in length and shape; eighth slightly shorter than seventh; eighth to tenth subequal to each other in length and shape; eleventh $1\frac{1}{3}$ times as long as tenth and its apex pointed. Prothorax transverse, nearly $1\frac{2}{3}$ times as wide as long, widest almost at middle, strongly narrowed anteriorly and posteriorly, anterior margin straight or slightly emarginate at middle, posterior margin strongly arched posteriorly with a distinct emargination at middle; anterior and posterior corners each with a setigerous puncture; dorsal surface closely impressed with shallow but distinct punctures, thickly covered with fine hairs, and with a shallower longitudinal furrow at middle and a pair of deep depressions laterally. Scutellum subtriangular with apex truncated, surface impressed with

fine punctures and covered with fine hairs. Elytron broader at base than prothorax, slightly widened posteriorly and rounded at apex, surface closely impressed with shallow but distinct punctures and closely covered with fine hairs, and with a distinct costa bordering along lateral margin.

Length: 5.5–6.0 mm.

Holotype: India: Chim-Khona (Ghum), 2200 m, Darjeeling Distr., W. Wittmer, 4.6.1975.

Paratypes: India: Same data as the holotype, 4 exs. Mane Bganjang, Sukhla Pakri, Darjeeling Distr., W. Wittmer, 9.6.1975, 1 ex. Tiger Hill, 2150 m, Darjeeling Distr., India, W. Wittmer, 6.6.1975, 1 ex. “Darjeeling”, W. Wittmer, Nepal: Mure, 25.5.1975, 1 ex. W. Wittmer, C. Baroni Urbani, Jiri-Thodung, 6.6.1976, 1 ex. W. Wittmer, C. Baroni Urbani, 28.5.1976, 1 ex.

Distribution: India (Darjeeling), Nepal.

This species most closely resembles *Pyrrhalta meifena* Kimoto, from Taiwan, China, but differs in having prothorax longer, more strongly and deeply impressed by longitudinal furrow and lateral depressions.

***Pyrrhalta scutellata* (Hope, 1831) New Combination Fig. 2**

In Gray, Zool. Misc., 29 (*Galleruca*) (Nepal).

Pyrrhalta tumida GRESSITT and KIMOTO, 1963, Pacif. Ins. Monogr. 1B: 467, fig (China).

KIMOTO, 1977, Entom. Basiliensia 2: 351 (Bhutan). New Synonym.

Nepal: Gokarhaban, Kathmandu, W. Wittmer, C. Baroni Urbani, 24.5.–21.6.1976, 3 exs., 12.6.1976, 1 ex. Distribution: Nepal, Bhutan, W. China.

***Pyrrhalta dimidiaticornis* (Jacoby, 1889) New Combination Fig. 3**

Ann. Mus. Civ. Genova, 27: 218 (*Menippus*) (Burma; type in Genova). MAULIK, 1936, Fauna India, Galerucinae, 243 (*Menippus*) (Burma).

Galerucella sericea WEISE, 1889, Horae Soc. Ent. Rossicae 23: 569, 622 (China: Kansu, Szetschuan; cotype in Zool. Mus. Berlin). KIMOTO and GRESSITT, 1973, Pacif. Ins. Monogr. 1B: 464, fig. (*Pyrrhalta*) (China). KIMOTO, 1969, Esakia, 7: 24 (*Pyrrhalta*) (Taiwan). New Synonym.

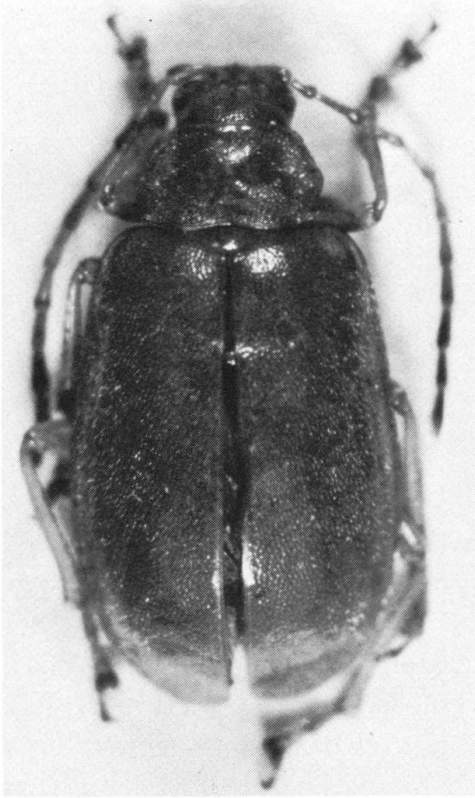
Galerotella garoana MAULIK, 1936, Fauna India, Galerucinae, 271 (Assam; type in Brit. Mus. Nat. Hist.). New Synonym.

Assam, India: Kaziranga, 75 m, W. Wittmer, C. Baroni Urbani, 7–9.5.1976, 18 exs.

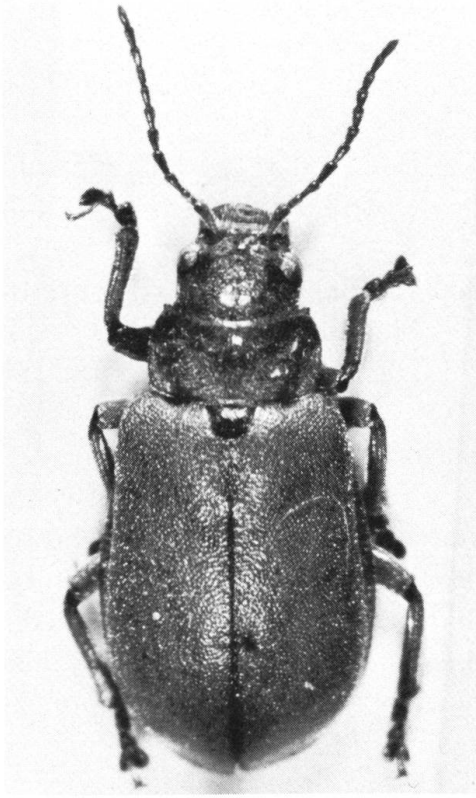
Meghalaya, India: Darugiri, Garo Hills, 450 m, W. Wittmer, C. Baroni Urbani, 19.5.1971, 1 ex.

Distribution: India, Burma, China, Taiwan.

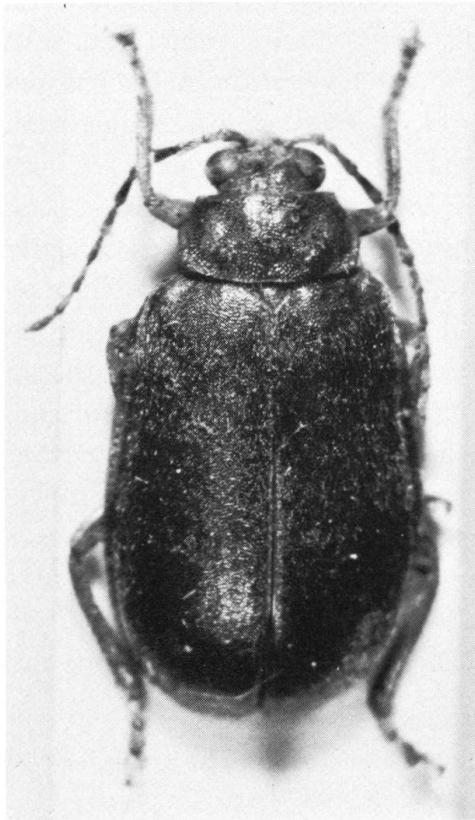
Fig. 1: *Pyrrhalta darjeelingensis* n. sp.; Fig. 2: *Pyrrhalta scutellata* (Hope); Fig. 3: *Pyrrhalta dimidiaticornis* (Jacoby); Fig. 4: *Galerucella placida* Baly



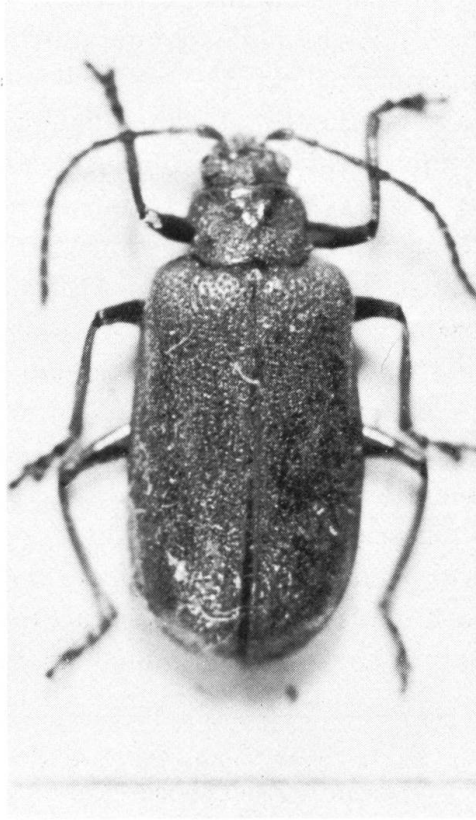
1



2



3



4

Galerucella placida (Baly, 1878) Fig. 4

= *Galerucella rugosa* JACOBY, 1884

Nepal: Jiri, 1800–1900 m, W. Wittmer, C. Baroni Urbani, 27.5.1976, 1 ex.

U. P., India: Dimli Pass, Sivalik Hills, W. Wittmer, 26.6.1971, 1 ex.

Distribution: Afganistan, India, Nepal, Burma, Sumatra, Java.

Galerucella birmanica (Jacoby, 1889) Fig. 5

Bhutan: Kharbandi, 700 m, D. K. Dukpa, 9.1975, 1 ex.

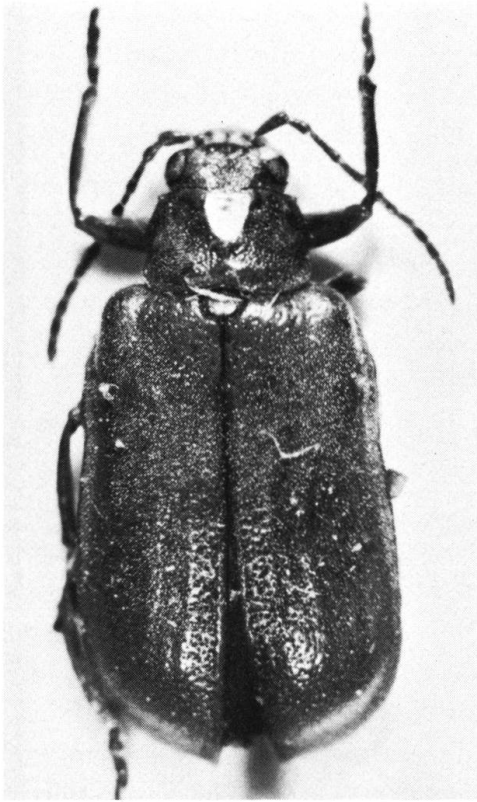
Distribution: India, Nepal, Bhutan, Burma.

Lochmaea maculata n. sp. Fig. 6

Yellowish brown; head yellowish brown with vertex pitchy black and frontal tubercle pitchy brown; scutellum pitchy black with apex brownish, elytron with basisutural, humeral and postmedian markings black; in one specimen postmedian marking divided into two smaller ones; ventral surfaces pitchy black; antenna dark brown with basal portion of each segment more paler, especially in basal segments; legs yellowish brown with tarsi and apical portions of tibiae much darker.

Head with vertex impressed with a longitudinal shallow depression in middle, finely shagreened with seven or eight very large punctures on each side of middle; frontal tubercle distinctly raised, subquadrate with anterior angle acute, inserted between antennal insertions and separated to each other by a longitudinal line; surface convex, slightly shagreened, without distinct punctures. Antenna robust, nearly $\frac{3}{4}$ as long as length of body, in preapical segments, nearly $2\frac{1}{2}$ times as long as wide, first segment long, robust, somewhat clubshaped; second shortest, nearly half as long as first; third slender, longest, nearly twice as long as second; fourth nearly $\frac{3}{4}$ as long as third; fifth slightly shorter than fourth; fifth to tenth subequal to each other in length and shape; eleventh nearly $1\frac{2}{5}$ times as long as tenth and its apex pointed. Prothorax transverse, nearly $1\frac{4}{5}$ times as wide as long, widest almost at middle, strongly narrowed anteriorly and less strongly so posteriorly, anterior margin nearly straight, posterior margin strongly arched posteriorly and slightly emarginate at middle; anterior and posterior corners each with a setigerous puncture; dorsal surface glabrous, sparsely impressed with large punctures, especially on laterobasal portion, and

Fig. 5: *Galerucella birmanica* (Jacoby); Fig. 6: *Lochmaea maculata* n. sp.; Fig. 7: *Nepalogaleruca elegans* Kimoto; Fig. 8: *Sastroides indicus* Jacoby



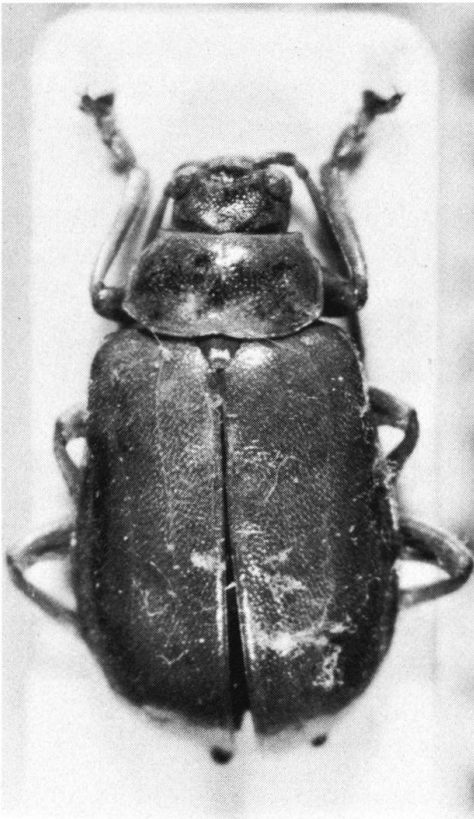
5



6



7



8

Sastroides purpurescens (Hope, 1831)

In GREY, Zool. Misc., 29 (*Sastra*) (Nepal). BRYANT, 1923, Ann. Mag. Nat. Hist. ser. 9.12.:146 (*Gastroides*; typographical error of *Sastroides*). MAULIK, 1936, Fauna India, Galerucinae, 267 (*Sastra*) (Nepal, Burma).
 = *Haplosonyx sublaevicollis* JACOBY, 1889, Ann. Mus. Civ. Genova, 27: 218 (Burma). MAULIK, 1936, t. c. (= *purpurescens*).
 = *Sastra actipennis* LABOISSIÈRE, 1932, Bull. Mus. Hist. Nat. Paris, ser. 2, 4: 960 (Sikkim; type in Paris). New Synonym

Nepal: Godavari, W. Wittmer, C. Baroni Urbani, 25.5.1976, 1 ex.
 Distribution: N. India, Nepal, Burma.

Agetocera hopei (Baly, 1865)

Bhutan: Dorjula, 3100 m, Dorjee Khandu, 2.9. 1976, 1 ex. Tongsa, 2150 m, 24.6.1972, 3 exs. Changra, 18 km S. Tongsa, 1900 m, 1972, 1 ex. 87 km von Phuntsoling, 22.5.1972, 1 ex.

Darjeeling, India: Chim-Khona (Ghum), 2200 m, 4.6.1975, 1 ex. Kalimpong Umg. Bhakta Bahdur, 10.1976, 1 ex.

Distribution: N. India, Nepal, Bhutan, Burma, China (Tibet), Java.

Agetocera mirabilis (Hope, 1831)

Nepal: Jiri, 1800–1900 m, W. Wittmer, C. Baroni Urbani, 27.5.1976, 1 ex.

Darjeeling, India: Tiger Hill, 2150 m, W. Wittmer, 6.6.1975, 1 ex.

Distribution: N. India, Nepal, Bhutan, Laos, China.

Hoplasoma unicolor (Illiger, 1800)

Bhutan, Kharbandi, 700 m, D.K. Dukpa, 8.1975, 9 exs., 9.1975, 16 exs.

Nepal: 5 km E. Manhari, 350 m, W. Wittmer, C. Baroni Urbani, 2.6.1976, 5 exs. Pokhara, 820 m, W. Wittmer, C. Baroni Urbani, 15.–18.6.1976, 10 exs. Godavari, 1500–1700 m, W. Wittmer, Brancucci, 21.5.1977, 1 ex.

Assam, India: Kaziranga, 75 m, W. Wittmer, C. Baroni Urbani, 7.–9.5.1976, 51 exs.

U.P., India: Dimli Pass, Sivalik Hills, W. Wittmer, 26.6.1976, 9 exs.

Darjeeling, India: Umg. Kalimpong, Bhakta Bahadur, 16.10.1975, 2 exs., 9.1976, 1 ex. Jhepi, 1300–1400 m, 17.5.1975, W. Wittmer, 1 ex.

Meghalaya, India, Darugiri, Garo Hills, 450 m, W. Wittmer, C. Baroni Urbani, 19.5.1976, 2 exs.

Distribution: India, Nepal, Bhutan, S. China, Hainan, Malaya, Sunda Is., Philippines.

with shallower anteromedian and posteromedian depressions, and deeper a pair of large lateral depressions. Scutellum subtriangular with apex rounded; surface impressed with fine punctures and covered with fine hairs. Elytron broader at base than prothorax, slightly widened posteriorly and rounded at apex; surface closely impressed with distinct punctures, and sparsely covered with short hairs.

Length: 3.5–4.0 mm.

Holotype: Tiger Hill, 2500 m, Darjeeling, India, W. Wittmer, 7.6.1975.

Paratypes: Same data as the holotype, 3 exs., 17.6. 1975, 1 ex. Tongula – Garibas, 3050–2600 m, Darjeeling, India, W. Wittmer, 7.6.1975, 1 ex.

Distribution: India (Darjeeling).

This new species slightly differs from the typical *Lochmaea* species, in having the elytron sparsely covered with short hairs. This species is somewhat intermediate between *Lochmaea* and *Pyrrhalta*, but seems to be more closely related to *Lochmaea*. In the species of *Pyrrhalta*, the dorsal surfaces of thorax and elytron are closely covered with long hairs.

This species can be separable from the known species of *Lochmaea*, in having the characteristic elytral markings, besides the short elytral hairs. The elytral markings of this new species somewhat resembles that of *Pyrrhalta shirozui* Kimoto, from Taiwan, China, but *L. maculata* is separable from the latter in having pronotum glabrous and the elytral hairs much shorter.

Nepalogaleruca elegans (Kimoto, 1970) Fig. 7

Nepal: Thodung via Those, 3100 m, W. Wittmer, C. Baroni Urbani, 29–31. 5.1975, 7 exs. Mure, W. Wittmer, C. Baroni Urbani, 11.6.1976, 1 ex. – Distribution: Nepal.

Periclitena vigrosi (Hope, 1831)

Nepal: Pokhara, 320 m, W. Wittmer, C. Baroni Urbani, 13.–18.6.1976, 2 exs.

Meghalaya, India: Darugiri, Garo Hills, 450 m, 19.5.1976, 1 ex.

Distribution: India, Nepal, Burma, Indo-China, Malaya.

Sastroides indicus (Jacoby, 1894) Fig. 8

Nepal: Godavari, 1500–1700 m, W. Wittmer, Brancucci, 21.5.1977, 1 ex.

Distribution: India (Assam), Nepal, Vietnam.

Hoplasoma costipennis (Jacoby, 1896)

Meghalaya, India, Barapani Old Road, 1000 m, W. Wittmer, C. Baroni Urbani, 14.5.1976, 8 exs. Gauhati, W. Wittmer, C. Baroni Urbani, 10.5.1976, 1 ex.

Assam, India: Kaziranga, 75 m, 7.–9.5.1976, 2 exs.

Distribution: India, Ceylon.

Hoplasoma sexmaculata (Hope, 1831) Fig. 9

Nepal: Jiri, 1800–1900 m, W. Wittmer, C. Baroni Urbani, 27.5.1976, 2 exs. Mali near Jiri, W. Wittmer, C. Baroni Urbani, 1.6.1976, 1 ex.

Darjeeling, India: Rimbick – Lodhama, 2350–1100 m, W. Wittmer, 22.5.1975, 12 exs. Bijanbai, 800 m, W. Wittmer, 12.5.1975, 1 ex. Lebung, 1600–1800 m, W. Wittmer, 8.5.1975, 3 exs., 2.6.1975, 1 ex. Jhepi, 1300–1400 m, W. Wittmer, 17.5.1975, 2 exs.

Distribution: India, Nepal, Bhutan, SW China.

Hoplasoma carinata (Kimoto, 1977) Fig. 10

Darjeeling, India: Bijanbari, 800 m, W. Wittmer, 12.5.1975, 9 exs.

Distribution: India, Bhutan.

Paridea eberti (Kimoto, 1970) Fig. 11

Nepal: Phulchoki, 2600 m, W. Wittmer, C. Baroni Urbani, 11.–14.6.1976, 3 exs.

U. P., India: Mussoorie, 1300–2000 m, W. Wittmer, 27.6.1976, 1 ex.

Distribution: India, Nepal, Bhutan.

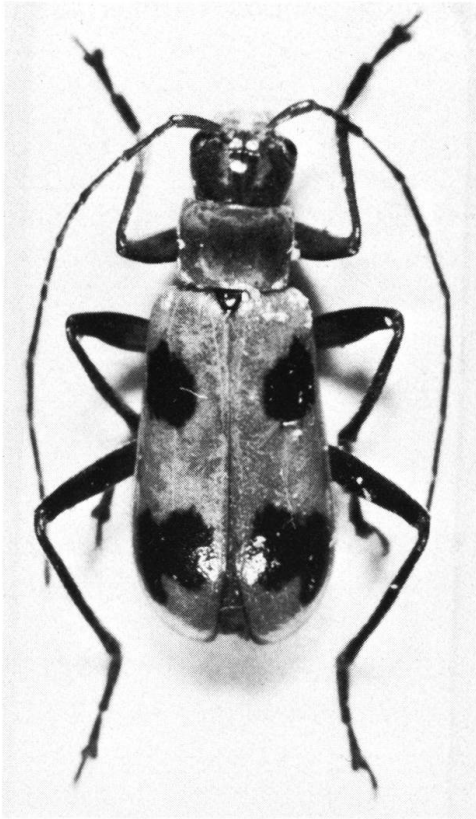
Haplosomoides egena (Weise, 1922)

Bhutan: Kharbandi, 700 m, Dorjee Khandu Dukpa, 1.1975, 1 ex.

Nepal: Pkhara, 820 m, 15.–18.6.1976, W. Wittmer, C. Baroni Urbani, 3 exs.

Darjeeling, India: Lopchu, 1500 m, W. Wittmer, 3.5.1976, 6 exs., 9.5.1975, 6 exs. Ghoom – Jorbang – la, W. Wittmer, 5.5.1976, 8 exs.

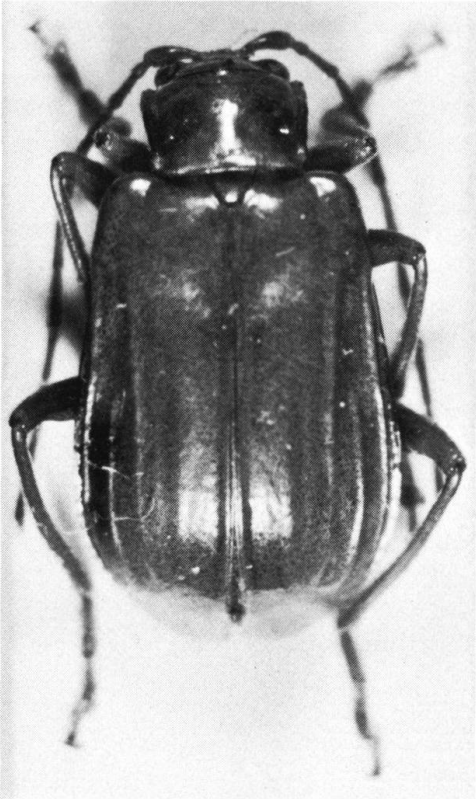
Assam, India: Kaziranga, 75 m, W. Wittmer, C. Baroni Urbani, 7.–9.5.1976, 10 exs.



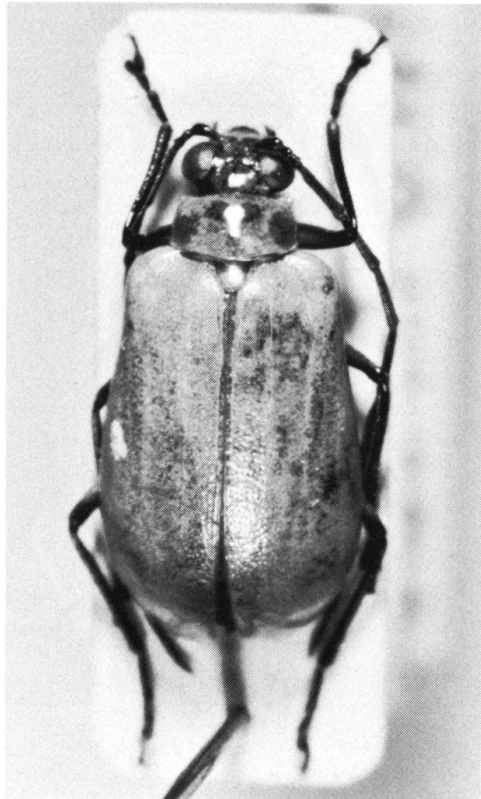
9



10



11



12

Meghalaya, India: Darugiri, Garo Hills, 450 m, W. Wittmer, C. Baroni Urbani, 450 m, 19.5.1976, 1 ex.

Distribution: India, Nepal, Bhutan, Vietnam, SE China.

Liroetis nepalensis (Chûjô, 1966)

Nepal: Phulchoki, 2600 m, W. Wittmer, C. Baroni Urbani, 12.6.1976, 12 exs. Same locality, 2000 m, J. Plante, 1977, 1 ex.

Darjeeling, India: Tiger Hill, 2500 m, W. Wittmer, 12.5.1975, 1 ex. Ramam, 2400–2500 m, 19.5.1975, 1 ex.

Distribution: India (Darjeeling), Nepal, Bhutan.

Arthrohidea nepalensis (Kimoto, 1970) Fig. 12

Nepal: Phul Choki, 2000 m, J. Plante, 3 exs. Jiri – Thodung, W. Wittmer, C. Baroni Urbani, 28.5. 1976, 1 ex. Chisapani, W. Wittmer, C. Baroni Urbani, 3.6.1976, 1 ex. Mure, W. Wittmer, C. Baroni Urbani, 6.6.1976, 1 ex.

Darjeeling, India: Darjeeling, 2150 m, W. Wittmer, 26.5.1975, 1 ex. – Distribution: India (Darjeeling), Nepal.

Mimastra gracilis (Baly, 1878) Fig. 13

Nepal: Phulchoki, 2600 m, W. Wittmer, C. Baroni Urbani, 11.–14.6.1976, 3 exs. Jumla – Padmara, 2300–2750 m, W. Wittmer, 27.5. 1977, 1 ex.

Darjeeling, India: Rimbick – Ramam, 1950–2450 m, W. Wittmer, 19.5.1975, 5 exs. Lebong, 1800–1900 m, W. Wittmer, 11.5. 1975, 1 ex. Chim – Khona (Ghum) 2200 m, W. Wittmer, 4.6.1975, 1 ex.

Assam, India: Kaziranga, 75 m, W. Wittmer, C. Baroni Urbani, 7.–9.5.1976, 1 ex.

Distribution: India (Darjeeling), Nepal, Bhutan, China (Sinkiang, Tibet).

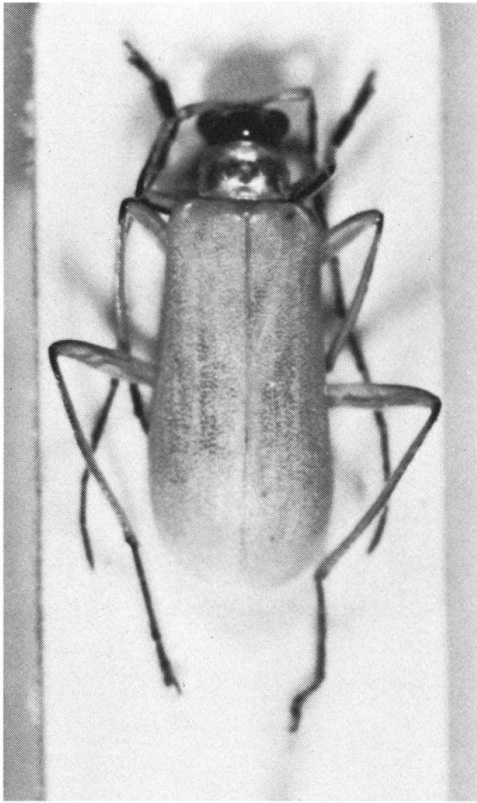
Mimastra unicitarsus (Laboissière, 1940)

Nepal: Jiri, 1800–1900 m, W. Wittmer, C. Baroni Urbani, 27.5.1976, 1 ex. 5 km E. Manhari, 350 m, W. Wittmer, C. Baroni Urbani, 2.6.1976, 1 ex.

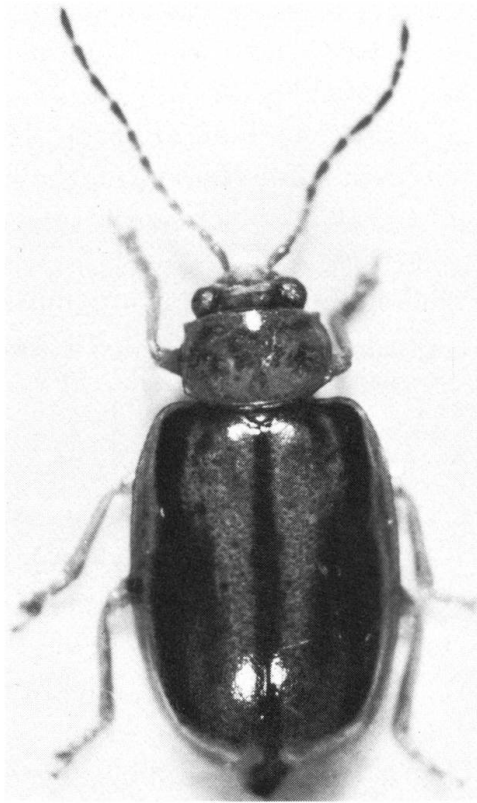
U. P., India: Dimli Pass, Sivalik Hills, W. Wittmer, 26.6.1976, 1 ex.

Distribution: India, Nepal, Burma, Bhutan, S. China.

Fig. 13: *Mimastra gracilis* Baly; Fig. 14: *Pseudoides flavovittis* (Motschulsky); Fig. 15: *Leptarthra fasciata* Jacoby; Fig. 16: *Spitiella collaris* (Baly)



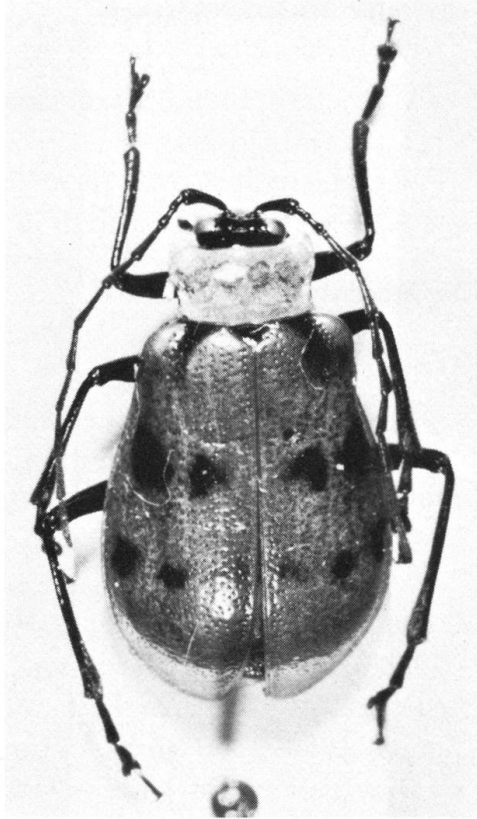
13



14



15



16

Doryscus testaceus (Jacoby, 1887)

Nepal: Godavari, W. Wittmer, C. Baroni Urbani, 25.5.1976, 14 exs., 10.6.1976, 26 exs.

Darjeeling, India: Lopchu, 1500 m, 31.5.1975, 1 ex.

Distribution: India, Nepal, Bhutan, Indo-China, SE China, Taiwan, Sumatra, Philippines.

Pseudoides flavovittis (Motschulsky, 1858) Fig. 14

Etud. Ent. 7: 101 (*Calomicrus*) (Burma). WILCOX, 1971, Col. Cat. Suppl. ed. 2, Galerucinae, 153 (Burma, Cambodia, Vietnam).

Pseudoides bivittata JACOBY, 1892, Ann. Mus. Civ. Genova 32: 966 (Burma; type in Genova). MAULIK, 1936, Fauna India, Galerucinae, 303, fig. (Burma). WILCOX, 1971, *t. c.* (= *flavovittis*). KIMOTO and TAKIZAWA, 1973, Kontyû 41 (2): 177 (Nepal).

Bhutan: Kharbandi, Dorjee Khandu Dukpa, 700 m, 9.1975, 23 exs., 8.1975, 5 exs. Phuntsholing, Darjee Khandu Dukpa, 2/400 m, 8.1975, 1 ex.

Distribution: Nepal, Bhutan, Burma, Cambodia, Vietnam.

Kanarella unicolor (Jacoby, 1896)

Nepal: Godavari, W. Wittmer, C. Baroni Urbani, 25.5.1976, 1 ex.

India: Darjeeling Distr., Lopchu, W. Wittmer, 1955 m, 3.5.1976, 1 ex. Goom – Jorbang – la, W. Wittmer, 5.5.1976, 1 ex.

Maghalaya, India: Maghalaya, Umtyngar – Cherrapunjee, W. Wittmer, C. Baroni Urbani, 16.5.1976, 1 ex.

Assam, India: Kaziranga, 75 m, W. Wittmer, Baroni Urbani, 7.–9.5.1976, 1 ex. – Distribution: India, Nepal

Merista dohrni (Baly, 1861)

Nepal: Godavari, 1500–1700 m, W. Wittmer, Brancucci, 21.5.1977, 1 ex.

Darjeeling, India: Lebong, W. Wittmer, 2.6.1975, 4 exs., 11.5.1975, 2 exs. Singmari-Barapatea Bung, W. Wittmer, 1975, 2 exs. Kalimpang Umg, Bhakta Bahadur, 10.1976, 1 ex.

Distribution: N. India, Nepal, Bhutan, Burma.

Merista sexmaculata (Kollar & Redtenbacher, 1848)

Darjeeling, India: Darjeeling, 2150 m, W. Wittmer, 26.5.1975, 1 ex. Singmari-Bharapatea Bung, W. Wittmer, 10.5.1975, 1 ex. Rimbick-Ramam, 1950–2450 m, W. Wittmer, 19.5.1975, 1 ex.

Distribution: Kashmir, N. India, Nepal, Bhutan.

Merista trifasciata (Hope, 1831)

Darjeeling, India: Lebong, 1800–1900 m, W. Wittmer, 2.6.1975, 3 exs., 8.5.1975, 2 exs. Tiger Hill, 2150 m, W. Wittmer, 6.6.1975, 5 exs. Singmari-Bharapatea Bung, W. Wittmer, 10.5.1975, 1 ex. Lopchu, W. Wittmer, 9.5.1975, 1 ex. Mane Bhanjang-Sukhia Pokri, W. Wittmer, 9.6.1975, 1 ex. Chim-Khona (Ghum), 2200 m, W. Wittmer, 28.5.1975, 1 ex. Jhepi-Rimbick, 1300–2350 m, W. Wittmer, 18.5.1975, 1 ex.

Assam, India: Kaziranga, 75 m, W. Wittmer, C. Baroni Urbani, 7.–9.5.1976, 1 ex.

Assam, India: Kaziranga, 75 m, W. Wittmer, C. Baroni Urbani, 7.–9.5.1976, 1 ex.

U. P., India: Mussorie, 1300–2000 m, W. Wittmer, 27.6.1976, 2 exs.

Distribution: N. India, Nepal, Bhutan.

Merista quadrifasciata (Hope, 1831)

Nepal: Godavari, W. Wittmer, C. Baroni Urbani, 1500–1700 m, 25.5.1976, 7 exs. Phulchoki, W. Wittmer, C. Baroni Urbani, 12.6.1976, 1 ex.

Pakistan: Muree, 2050 m, W. Wittmer, Brancucci, 6.1977, 1 ex.

Distribution: Kashmir, N. India, Nepal, Bhutan.

Merista pulunini (Bryant, 1952)

Nepal: Thodung via Those, 3100 m, W. Wittmer, C. Baroni Urbani, 29.–31.5.1976, 1 ex. Jiri Lukla, O. Nepal, 2/2600 m, E. de Broas, 1.–10.4.1975, 1 ex.

Distribution: Nepal.

Aplosonyx chalybaeus (Hope, 1831)

Bhutan: Kharbandi, Dorjee Khandu Dukpa, 700 m, 8.1975, 4 exs.

Nepal: Dandapakhar, 1700 m, W. Wittmer, C. Baroni Urbani, 7.6.1976, 1 ex.

Darjeeling, India: Jhepi, W. Wittmer, 22.5.1975, 4 exs. Lebong, W. Wittmer, 1800/1900 m, 8.5.1975, 1 ex. Rimbick – Ramam, W. Wittmer, 19.5.1975, 1 ex.

Meghalaya, India: Songsak, Garo Hills, W. Wittmer, C. Baroni Urbani, 19.5.1976, 7 exs.

Distribution: India, Nepal, Bhutan, Burma.

Aplosonyx scutellatus (Baly, 1879)

Nepal: Mure, W. Wittmer, C. Baroni Urbani, 6.6.1976, 1 ex.

Darjeeling, India: Kalimpong Umg., Bhakta Bahadur, 10.1976, 20 exs.

Assam, India: Kaziranga 75 m, W. Wittmer, C. Baroni Urbani, 7.–9.5.1976, 1 ex.

Distribution: India, Nepal.

Aplosonyx orientalis (Jacoby, 1892)

Meghalaya, India: Darugiri, Garo Hills, 450 m, W. Wittmer, C. Baroni Urbani, 19.5.1976, 3 exs.

Distribution: N. India, Burma.

Sphenorais (Sphenoraioides) rutilans (Hope, 1831)

Nepal: Godavari, W. Wittmer, C. Baroni Urbani, 25.5.1976, 1 ex. Jhepi, W. Wittmer, 22.5.1975, 1 ex. Jiri, W. Wittmer, C. Baroni Urbani, 1800–1900 m, 27.5.1976, 1 ex. Jiri – Thodung, W. Wittmer, C. Baroni Urbani, 28.5.1976, 3 exs.

Darjeeling, India: Umg. Kalimpong, Bhakta Bahadur, 19.10.1975, 1 ex. Lopchu, W. Wittmer, C. Baroni Urbani, 3.5.1976, 1 ex.

Distribution: Kashmir, N. India, Nepal, Bhutan, W. China.

Leptarthra abdominalis (Baly, 1881)

Darjeeling, India: Rimbick – Ramam, 1950–2450 m, W. Wittmer, 19.5. 1975, 2 exs.

Distribution: N. India, Bhutan.

Leptarthra fasciata (Jacoby, 1894) Fig. 15

Nepal: Jiri, 1800–1900 m, W. Wittmer, C. Baroni Urbani, 27.5.1976, 1 ex. Jiri – Thodung, W. Wittmer, C. Baroni Urbani, 18.5.1976, 1 ex. Godavari, 1000–1700 m, W. Wittmer, Brancucci, 21.5.1977, 1 ex.

Distribution: Nepal, N. India.

Spitiella collaris (Baly, 1878) New Combination Fig. 16

Cist. Ent., 2: 382 (*Leptarthra*) (Muree; type in Brit. Mus. Nat. His.). MAULIK, 1936, Fauna India, Galerucinae, 611 (*Leptarthra*) (Western Himalaya). *Spitiella auriculata* LABOISSIÈRE, 1931, Ann. Soc. Ent. France, 100: 151, fig. (India: Punjab; cotype in Hamburg). KIMOTO, 1970, Khumbu Himal, 3 (3):416 (Nepal). KIMOTO and TAKIZAWA, 1972, Kontyû 40 (4): 220 (Nepal). KIMOTO, 1977, Entom. Basiliensia 2: 391 (Bhutan). New Synonym.



17



18

Fig. 17: *Gallerucida nigricornis* (Laboissière), nominate form; Fig. 18: Ibid, variation (prothorax blackish)

Nepal: Padmara – Khari Langa 3400 m Bumra 2750 m, W. Wittmer, 28.5.1977, 1 ex. 5 km E. Manhari, 350 m, W. Wittmer, C. Baroni Urbani, 2.6.1976, 1 ex.

Darjeeling, India: Tonglu – Garibas, 3050–2600 m, W. Wittmer, 7.6.1975, 1 ex. Lihenwan, 950, SE Srinagar, Y. Plante, 21.1976, 2 exs.

Distribution: N. India, Nepal, Bhutan.

According to the study on the type preserved in the British Museum Natural History, *Leptarthra collaris* Baly should be transferred to *Spitiella*, and *Spitiella auriculata* Laboissière becomes a junior synonym of this species.

***Gallerucida nigricornis* (Laboissière, 1880) Fig. 17 and 18**

Bull. Mus. H. n. Belg. 16 (3): 24 (*Galerucida*) (Kurseong, Sikkim).

Darjeeling, India: Mane Bhanjang, Sukhia Pakri, 2000 m, W. Witt-

mer, 9.vi.1975, 3 exs. Lopchu, W. Wittmer, 9.5.1975, 3 exs., 31.5.1975, 1 ex.; W. Wittmer, C. Baroni Urbani, 3.5.1975, 1 ex.

Distribution: N. India (Darjeeling).

This species seems to be a variable species for the coloration of prothorax and legs. In the most dark colored specimens, the prothorax is almost entirely pitchy black, instead of reddish brown, and the legs are reddish brown to pitchy black in various degrees.

Author's address:

Prof. Dr. Shinsaku Kimoto

Biological Laboratory, Dept. of General Education, School of Medicine
Kurume University, Kurume, Japan