

Zeitschrift: Swiss review : the magazine for the Swiss abroad
Herausgeber: Organisation of the Swiss Abroad
Band: 30 (2003)
Heft: 2

Artikel: www.swissgeo.org - your perfect holiday companion!
Autor: [s.n.]
DOI: <https://doi.org/10.5169/seals-907372>

Nutzungsbedingungen

Die ETH-Bibliothek ist die Anbieterin der digitalisierten Zeitschriften auf E-Periodica. Sie besitzt keine Urheberrechte an den Zeitschriften und ist nicht verantwortlich für deren Inhalte. Die Rechte liegen in der Regel bei den Herausgebern beziehungsweise den externen Rechteinhabern. Das Veröffentlichen von Bildern in Print- und Online-Publikationen sowie auf Social Media-Kanälen oder Webseiten ist nur mit vorheriger Genehmigung der Rechteinhaber erlaubt. [Mehr erfahren](#)

Conditions d'utilisation

L'ETH Library est le fournisseur des revues numérisées. Elle ne détient aucun droit d'auteur sur les revues et n'est pas responsable de leur contenu. En règle générale, les droits sont détenus par les éditeurs ou les détenteurs de droits externes. La reproduction d'images dans des publications imprimées ou en ligne ainsi que sur des canaux de médias sociaux ou des sites web n'est autorisée qu'avec l'accord préalable des détenteurs des droits. [En savoir plus](#)

Terms of use

The ETH Library is the provider of the digitised journals. It does not own any copyrights to the journals and is not responsible for their content. The rights usually lie with the publishers or the external rights holders. Publishing images in print and online publications, as well as on social media channels or websites, is only permitted with the prior consent of the rights holders. [Find out more](#)

Download PDF: 02.08.2025

ETH-Bibliothek Zürich, E-Periodica, <https://www.e-periodica.ch>


In addition, according to Michel Chevallier, the canton of Geneva media officer responsible for e-voting, "the government also wants to introduce the electronic collection of signatures for initiatives and referenda, as part of its efforts to promote electronic options for exercising people's rights."

The project launched by the canton of Neuchâtel addresses precisely this objective. Polling booths have traditionally been an ideal place for political parties to collect sig-

natures for their initiatives, but this has proved increasingly difficult since more and more people are now casting their votes by mail (in Geneva, only five percent of voters now go in person to the polling booth). Here, too, the Internet could offer an ideal solution: all in all, a veritable boon for direct democracy!

The legal basis for pilot projects will be in place until 2004, after which the government will rule definitively. So, while not exactly

round the corner, electronic voting is not too far off!

Isabelle Eichenberger 

The government pilot projects:

<http://www.admin.ch/ch/f/egov/ve/index.html>

Translated from German.

swissinfo / SRI NEWS

www.swissgeo.org – your perfect holiday companion!

At www.swissgeo.org Internet surfers can consult electronic maps featuring more than 30,000 interesting locations in Switzerland. The maps are ideal for organising your next holidays in Switzerland or for locating addresses

Looking for a particular street? Or perhaps you want to find the location of an embassy, garage, club, bar, car park or monument? Just enter <http://www.swissgeo.org> to access the geographic information system of swissinfo/Swiss Radio International (SRI).

[swissgeo.org](http://www.swissgeo.org) also provides detailed information on each geographical location: address, telephone, website etc. Added to this, the swissinfo geographical information system offers a wide range of functions, from zoom to sending an e-card to your friends, parents or colleagues!

Last but not least, www.swissgeo.org is available in ten languages: English, German, French, Italian, Romansh, Spanish, Portuguese, Japanese, Arabic and Chinese.

swissmusic – the best of Swiss music on the Internet

With its four linguistic regions, Switzerland offers a huge diversity of music. "swissmusic" is an English-language site devoted, as the name implies, to Swiss music. And it contains a new and exclusive anthology of the Swiss pop and rock scene.

"swissmusic" (<http://swissmusic.swissinfo.org>) offers surfers a complete cross-section of the best Swiss musical productions free of charge, from the national anthem to the latest Stephan Eicher hit. It covers all musical styles: rock, pop, classical, jazz, folk music etc.

The well-researched sections of the new www.swissinfo.org music site are aimed at specialists as well as the general public. A number of links provide visitors with easy access to other sites dedicated to Swiss music.

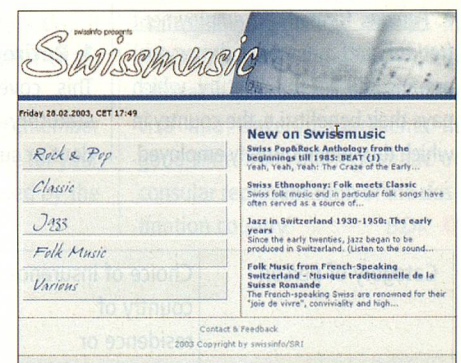
"Best of new releases" is for all those who want to keep up with the latest music. Here you will find a selection of recently-released Swiss albums and singles. The "Anthology" gives you

the opportunity to rediscover some golden oldies.

30 years of Swiss pop-rock: new on the Internet

Alongside the history of jazz, folk and classical music, "swissmusic" offers an exclusive anthology of Swiss pop and rock. Over 100 tracks, more than half of which have never been released previously on CD, trace the development of this musical genre from the hugely popular rock 'n' roll of the 1950s to the major pop and rock hits of the 1980s.

The anthology, produced by swissinfo/Swiss Radio International (SRI) and the SUISA Foundation for Music, is also available as a 5-CD boxed set entitled "Swiss Pop & Rock" (issued by SUISADISC/distributor: SoundService).



swissmusic: meet the big names of Swiss music on the Web.

Information

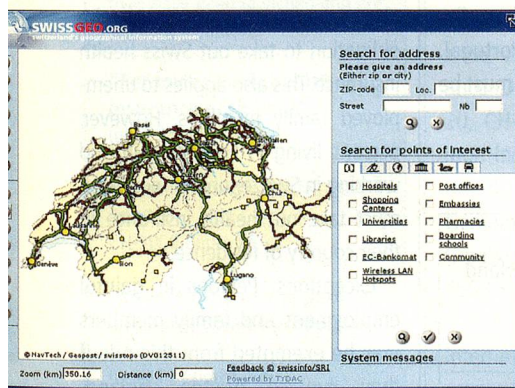
swissinfo/Swiss Radio International (SRI)

Virginie Carniel

Head of Marketing-Communication

E-mail: virginie.carniel@swissinfo.ch

Tel.: ++41 79 476 14 86



Find more than 30,000 interesting locations in Switzerland thanks to the geographic maps at www.swissgeo.org!

To make your search easier, the information provided by [swissgeo.org](http://www.swissgeo.org) is divided into different categories (tourism, sport and leisure, mobility etc) and subcategories (hotels, Vitaparcours tracks, railway stations etc). Just click on the relevant field and start your search. You can then use the relevant map to pinpoint the location you seek.