

**Zeitschrift:** Swiss review : the magazine for the Swiss abroad  
**Herausgeber:** Organisation of the Swiss Abroad  
**Band:** 19 (1992)  
**Heft:** 4-5

**Anhang:** Regional news : USA

### **Nutzungsbedingungen**

Die ETH-Bibliothek ist die Anbieterin der digitalisierten Zeitschriften auf E-Periodica. Sie besitzt keine Urheberrechte an den Zeitschriften und ist nicht verantwortlich für deren Inhalte. Die Rechte liegen in der Regel bei den Herausgebern beziehungsweise den externen Rechteinhabern. Das Veröffentlichen von Bildern in Print- und Online-Publikationen sowie auf Social Media-Kanälen oder Webseiten ist nur mit vorheriger Genehmigung der Rechteinhaber erlaubt. [Mehr erfahren](#)

### **Conditions d'utilisation**

L'ETH Library est le fournisseur des revues numérisées. Elle ne détient aucun droit d'auteur sur les revues et n'est pas responsable de leur contenu. En règle générale, les droits sont détenus par les éditeurs ou les détenteurs de droits externes. La reproduction d'images dans des publications imprimées ou en ligne ainsi que sur des canaux de médias sociaux ou des sites web n'est autorisée qu'avec l'accord préalable des détenteurs des droits. [En savoir plus](#)

### **Terms of use**

The ETH Library is the provider of the digitised journals. It does not own any copyrights to the journals and is not responsible for their content. The rights usually lie with the publishers or the external rights holders. Publishing images in print and online publications, as well as on social media channels or websites, is only permitted with the prior consent of the rights holders. [Find out more](#)

**Download PDF:** 17.04.2026

**ETH-Bibliothek Zürich, E-Periodica, <https://www.e-periodica.ch>**

## "Bilder aus der Schweiz"

Swiss Television for the USA – Now every week on "German Television in America" (DFA)

Since September 13, 1992, "German Television in America" (DFA) which is operated by American Television News (ATN) in Los Angeles broadcasts a weekly magazine entitled "Bilder aus der Schweiz" (Images from Switzerland). This half-hour program can be seen on the International Channel nationwide at 17:30 EST and 14:30 PST via Satellite F4/12 and on cable in most major US cities.

Based on a format originally designed for European viewers, this program will be specially tailored to the American viewing audience by the 3SAT-production staff of the "Television for German and Reto-romanch speaking Switzerland" (DRS). It contains news and other information of actuality about Switzerland. The idea for development of this program originated with SRI and is being implemented thanks to the close cooperation between DFA, the Consulate General of Switzerland in Los Angeles and SRI. "Bilder aus der Schweiz" rounds out the news program which SRI has been producing since

1986 for the CNN World Report as well as the English-language monthly magazine "Swiss World" first aired last year. Both programs "Swiss World" and "Bilder aus der Schweiz" are primarily underwritten by the "Commission for the Coordination of Switzerland's Presence Abroad" (Koko).

These Swiss media contributions would not have been possible without close cooperation between SRI and the three networks (French-Italian- and German-language) of the Swiss Radio and TV Corporation (SRG). For many years SRI has been taking advantage of such synergies by also broadcasting regional Swiss programs via short-wave radio and most recently via ASTRA satellite geared especially to the Swiss living abroad.

The "German Television in America" targets the largest German-speaking customer base outside of Europe. Over fifty million people emigrated to the US from the German-speaking regions of Europe and approximately ten million are currently able

to follow German-language broadcasts. About 100,000 mostly German-speaking Swiss presently live in the US.

Further details about how to tune into this program are available from the International Channel at (310) 478-

1818. For questions regarding programming, advertising, sponsorships and German-language videos please contact ATN/German TV in America, P.O. Box 4328, West Hills, CA 91308, phone (818) 888-8673, Fax 888-2029. ■

## Youth Exchange 1993

Spending unforgettable holidays in a foreign country, getting to know a new language and a different culture, making friends for life – all this and more through the youth exchange program for young Swiss Abroad. The idea is to provide a six-week holiday in a Swiss family here at home in exchange for a holiday in the home of your Swiss family abroad. And if you feel like it, you can take a week's trial apprenticeship in Switzerland or arrange for future studies.

Dates: July 1–August 14, 1993

Conditions: Age 15–25; overseas 16–25. Mother or father must be a Swiss citizen.

Price: About Sfr. 400.– per participant without travel. This includes introductory camp, trial apprenticeship or

training course, evaluation day and problem solving. Applications: By the end of March to your local coordinator or direct to the Secretariat for the Swiss Abroad.

USA/ETATS-UNIS  
Mrs. Lilo Holzer  
261 W. Kenneth Road  
USA-Glendale, CA 91202  
Tel. P. 001 818 240 0970  
Tel. G. 001 818 543 0092  
Fax 001 818 543 7096

Mrs. Betty Pircher  
74 Crestline Drive, Apt. 12  
USA-San Francisco, CA 94131  
Tel. 001 415 641 8528

SCHWEIZ/SUISSE  
Projektleiterin AFS  
Frau Sylvia Witschi  
Rifishaltenstrasse 27  
3145 Niederscherli  
Tel. 031 849 00 08  
Fax 031 849 12 55

Projektleiterin ASS  
Frau Edith Locher  
Auslandschweizer-Sekretariat  
Alpenstrasse 26  
3000 Bern  
Tel. 031 44 66 25  
Fax 031 44 21 58

Attention Residents of New York, New Jersey, Connecticut, Pennsylvania and Delaware

## Pellegrini Scholarship Grants

The Pellegrini Scholarship Fund of the Swiss Benevolent Society of New York and the Swiss Benevolent Society of Philadelphia assist qualified applicants to obtain a formal education in any field of endeavour at an accredited institution above high school level.

Scholarships are granted on the basis of need and merit, and are limited to partial financial assistance.

In addition to these grants, the PSF Committee may present the Sonia Streuli Maguire Outstanding Scholastic Achievement (OSA) award to a student at the upper college- or graduate level, based on merit alone.

**Written requests for application forms for the academic year 1993/94 must be received by January 31, 1993** and should be addressed to:

## Editorial

*This is the third issue of the Swiss Review which is mailed to you directly from Switzerland, and is the second edition which features four pages of "US Regional News". Our search for a US-based editor has been very promising and we would like to thank you for all the interest you have shown – the "US Regional News" depends strongly upon the goodwill of all our readers.*

*Our first experience with the procedure which enables the Swiss abroad to vote on federal matters has been a positive one. Swiss Review readers should be reminded that the US State Department advised the Swiss Embassy in Washington in 1990 that "foreign nationals are free to avail themselves of this right without interference from the United States regardless of the fact that they may also possess United States nationality". Such being the case, if you have not already done so, contact the Consulate General of Switzerland responsible for your area and find out how you can exercise this new right.* ■

Pellegrini Scholarship Fund Committee of the Swiss Benevolent Society of NY  
37 West 67<sup>th</sup> Street  
New York, NY 10023

To be eligible, the following qualifications must be met:

1. One of the applicant's parents must be a Swiss national.

2. The applicant, or his/her parents must be permanently domiciled in one of the above named states.

3. The applicant must demonstrate need for financial support, except for the OSA award.

4. The applicant must be of good academic standing and must show aptitude in his or her chosen field. ■

## Swiss Immigration to Wisconsin Project

Since 1980, an intensive and comprehensive study of the immigration of the Swiss to the state of Wisconsin during the 19th century has been in progress. This important undertaking will produce brief biographical and genealogical studies of all persons of Swiss-birth who came to Wisconsin prior to 1900. The ultimate goal will be to produce a complete study of the Swiss. In addition to information of a biographical nature, the project will focus on the major sources of emigration, the journey to America and migration to Wisconsin, and the settlement process.

The purpose of the research is to identify the individuals by name, age and occupation; to locate the immigrant's commune or canton of origin; to chronicle their settlements; and to identify their descendants. This study will bring together all that is currently known about each immigrant and gather together material pertaining to the Swiss in general.

The total number of Swiss immigrants who came to Wisconsin in the 19th century is approximately 12,000, according to the most reliable estimates. Because these figures were mostly gleaned from census records, it is likely that other Swiss were included in groups speaking a common language, i.e. German, French or Italian. Therefore it is possible that 15,000 would be a more realistic number.

It appears that the first Swiss settled in the Wisconsin Territory (then part of Michigan and Illinois) in the middle of the 1820's. The greatest number immigrated to the state in the 1840's and 1850's, with a significant increase appearing in the 1880's. The main cantons contributing citizens were Bern, Graubunden, Glarus and Zuerich. Noteworthy Wisconsin-Swiss communities were located in Buffalo, Green, LaCrosse, Milwaukee and Sauk counties, but Swiss were dispersed widely throughout the state.

A number of prominent national figures in religion, politics, and art have Wisconsin-Swiss connections, namely Archbishop J.M. Henni, C. Hermann Boppe, E.L. Philipp, P. Rindisbacher, and Dr. N. Senn, to name just a few.

In the first five years, the project focused on the naturalization records of seven counties, followed by a complete search of the vital records. Census records, cemetery transcriptions, diaries, genealogies, family bibles, letters, and newspapers provided additional information. Two research trips to Swiss archives were made in 1980 and 1985. During this period, a complete history of the Swiss settlements in Fond du Lac, Waukesha, Waupaca, and Wood counties were compiled. Since 1985, partial studies of the Swiss in Buffa-

lo, LaCrosse, Milwaukee, and Winnebago counties have been progressing. Travel to county courthouses, historical societies, and Area Research Centers sustains the project during the year.

By and large, the story of the Swiss presence in Wisconsin has not been told. With the help and cooperation of a number of people, especially the descendants of the Swiss themselves, the story will unfold, resulting in a definitive history of this important and interesting ethnic group. Before this, articles on Swiss origins and

settlements generated by the project's research activities will appear in genealogical and historical journals.

Due to the scope of this undertaking, no deadline for completion has been set. Anyone with a "Swiss connection" is invited to submit information on an early Swiss immigrant. No contribution is too small. For further information on this project, send a self-addressed stamped envelope to:

**Maralyn A. Wellauer,**  
3239 North 58th Street,  
Milwaukee, Wisconsin  
53216 USA ■

## Swiss Roots

The Swiss American Review is The Voice of Switzerland in America – a weekly review of events in Switzerland and world news as it affects Switzerland – in English, German, French, Italian and Romansch. Our editorial board provides hard news and insights you can't get in any other newspaper, magazine or on TV.

**Here's what The New York Times, Wall Street Journal, USA Today and your local newspaper don't tell you about Switzerland.**

Sports, political news, cultural events, Swiss stock quotations and other financial news. Summaries, from Switzerland's respected, opinion-making publications, the best from the best as it applies to Switzerland and Swiss living in the USA. Put together by an enthusiastic editorial board representing all walks of life.

Now it's your move. Do it for your reading pleasure or just for being a good Swiss American citizen. Thank you for subscribing.

**Yes, I'd like to get acquainted with Swiss American Review.**

Send coupon to: Swiss American Review Inc.  
608 Fifth Avenue/Room 609  
New York, N.Y. 10020

Name \_\_\_\_\_

Address \_\_\_\_\_

City \_\_\_\_\_

State \_\_\_\_\_ Zip \_\_\_\_\_

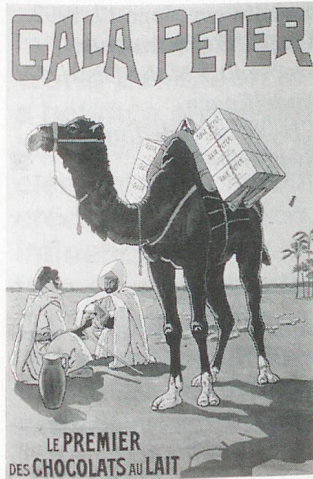
Subscription Rates      USA and Canada  
1 Year US\$ 30/2 Years US\$ 55  
3 Years US\$ 80  
Switzerland US\$ 38 per year.

Payment      Make check or money order payable within the USA

## Bread and Chocolate

A documentary exhibition on the culinary traditions of Switzerland

In the spring of 1993, The Birmingham Alabama Festival of the Arts will feature the first venue of the traveling exhibition "Bread and Chocolate". Curated by Cynthia Rubin, a Folk Art specialist living in New York City,



"Bread and Chocolate" will assemble approximately 150 objects and documents pertaining to the rich culinary tradition of Switzerland.

For moviegoers, the classic film "Bread and Chocolate" epitomized the way many people continue to view Switzerland – as a land of blond Heidis eating chocolate between slices of bread. Like many myths, this one contains a grain of truth, too; as it is, those who know Switzerland understand that this small country contains a great diversity of peoples and culinary traditions.

Today, no traveler in Switzerland can help but notice the "confiseries" or chocolate shops that line the streets of every town, big or small. Many "living" chocolate and confectionary traditions will therefore be on display in this exhibition: Geneva's "Marmite de l'Escalade", "Truites" and "Canetons" of Lucerne or "Pfirsichsteine" from Chur.

Also, when it comes to bread, Switzerland has a splendid selection of very

different breads: light, dark or a mixture of the two, made with different types of flour. These breads vary considerably from canton to canton and even locally, in flavor, texture and shape.

The exhibit will describe their history in cooperation with "La Maison du Blé et du Pain" in Echallens near Lausanne, a national center devoted to the instruction and documentation of farming and the making of bread; the "Fachschule Richemont" in Lucerne, Craft School and Research Laboratory of the Swiss Master Bakers and Confectioners Association; and "La Società Mastri Pannettieri-Pasticcieri del Ticino", "the Swiss Italian Society of Master Bakers and Confectioners" in Lugano.

A large portion of the exhibition will be devoted to documents depicting antique artifacts such as molds and pots, and ephemera, such as antique packaging and posters (as the one illustrated here). "Bread and Chocolate" also provides a background for a boundless array of programming including gastronomic dinners; workshops in candy and bread making; and lectures on culinary history.

Cynthia Rubin, who in 1991 has curated the show "Swiss Folk Art" for the Museum of American Folk Art in New York, has been invited by Pro Helvetia, the Arts Council of Switzerland, for an extended stay in Switzerland in order to collect material for this project. However additional funding is still needed in order to make sure the exhibit can be realized. For all questions regarding the exhibition and its tour through the United States please contact: Cynthia E. Rubin, 20 West 72nd Street, New York, N.Y. 10023, Tel. (212) 877-3800. ■

## General John A. Sutter

– a documentary film

"The United Swiss Lodge of California is preparing to embark on an exciting journey – the creation of a docudrama film on the life of General John A. Sutter, the founder of Sacramento, the capital of the country's largest State.

The full and true story of California's most famous Swiss immigrant has never been presented in a docudrama film format. His contributions to California – pioneering the settlement of the Sacramento valley, serving as the first major general of the California militia, constructing "Neu Helvetia", the Sutter's Fort – are recounted in exhibits and publications, but Sutter's true story has never been brought to life on the "big screen".

In Sacramento, we are fortunate to have the recreated Sutter's Fort and other displays to keep Sutter's memory alive. A docudrama film will be a perfect complement to existing tributes.

The United Swiss Lodge of California has assembled a roster of talented individuals who are eager to begin work on the project. The team will be led by the innovative Swiss film producer and director, Benny Fasnacht.

Filming will be done in Switzerland and in Sacramento.

We are seeking your financial support for the: "General John A. Sutter: A Docudrama Film". We estimate our production costs to be close to \$ 500,000. Thus far we have raised \$ 50,000, roughly ten percent of our goal. As you can see, we have taken a significant step toward the realization of our dream. Any contribution you might be able to make will be greatly appreciated. For every \$ 10.– contributed, you will be given one chance in a special price drawing that will be held at the premiere of the film in 1993.

The first prize in the drawing is a pair of round-trip tickets to Switzerland aboard SWISSAIR.

Second prize is a pair of round-trip tickets, business class, to Switzerland by BALAIR.

Third prize is a one week use of a Swiss Chalet in Meeks Bay, with a beautiful view of Lake Tahoe, California.

ACT TODAY: Make out a check to the "General Sutter Film". Clip and fill out the coupon below and mail it with your check to:

**GENERAL JOHN A. SUTTER DOCUDRAMA FILM**  
P.O. Box 22526  
Sacramento, Ca. 95822-0526

Please, mail me my tickets for the drawing to:

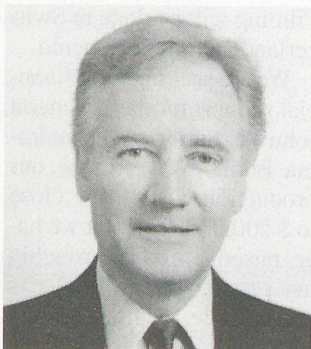
Name: \_\_\_\_\_ Tel. area code( ) Nr. \_\_\_\_\_

Address: \_\_\_\_\_

City: \_\_\_\_\_ State: \_\_\_\_\_ Zip Code: \_\_\_\_\_

NOTE: SHOULD THE FILM NOT BE PRODUCED FOR LACK OF FINANCIAL SUPPORT, YOUR DONATION WILL BE REFUNDED TO YOU IF YOU REQUEST IT. DONATIONS MADE WITHOUT A REQUEST FOR A REFUND WILL BE TRANSFERRED TO THE GENERAL SUTTER SCHOLARSHIP FUND. ■

## New Honorary Consul in Buffalo, N.Y.



Mr. Jean Marcel Kuebler has been appointed as the new Honorary Consul in Buffalo, N.Y., in succession to Mr. André R. Jaccard. Born in 1942 in Geneva, Switzerland, Mr. Kuebler lives in the United States since 1968. He was educated at Public School in Winterthur, Switzerland, and at the Swiss Federal Institute of Technology. After several years of professional activity

as a technical designer he moved to Clarence, N.Y., to become a design engineer at Kistler Instrument Corp. From 1970 to 1979, Mr. Kuebler pursued a career with Sundstrand Data Control in Redmond, W.A., before joining again Kistler Instrument Corp. at Amherst, N.Y., where he presently occupies the position of a Vice President in the department of Engineering.

Mr. Kuebler who is a citizen of both the United States and Switzerland, is married to Elisabeth Kuebler and has two daughters, Denise and Yvonne. The new address of the Honorary Consulate in Buffalo will be: Consulate of Switzerland Buffalo, 75 John Glenn Drive, Amherst, N.Y. 14228-2171. ■

## Invitation to Heirs

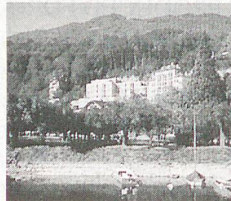
On December 19, 1991 in Zurich, Switzerland, occurred the death of **Emil Graf**, single, born on June 9, 1901, from Rafz/ZH, whose last residence was at Gartenstr. 10, 8902 Urdorf; he was the son of Kaspar Graf and Emilie, nee Ehrensperger.

The legal heirs are from the grandparents' families, namely the descendants of the grandparents on the father's side, Kaspar Graf and Salomea, nee Rubli, and on the mother's side, Friedrich Ehrensperger and Magdalena, nee Bernhard. The legal heirs from the grandparents' families are known, except for descendants of the mother's brother, Hermann Ehrensperger, and are considered registered.

Any descendants of **Hermann Ehrensperger**, born on June 8, 1874, said to have emigrated to America, are asked to report for the inheritance.

The invited persons are requested to report within one year from the publication of this invitation to the undersigned office and present documents proving their capacity as heirs, as otherwise the estate, in care of the testamentary executor, will be left to the known legal heirs. Zurich, June 26, 1992.

*District Court of Zurich  
Sole judge in estate matters  
B. Hadjikhani, lic. jur.  
Kanzleistr. 4  
8004 Zurich, Switzerland* ■



### WOHN-PARK SCHLOSS MARIAHALDEN WEESEN, SWITZERLAND

*Luxurious development. Unforgettable views.*

Call: Franziska Amacher Amacher Quinn Architects  
Phone (617) 868-3755 136 Mt. Auburn Street  
Fax (617) 868-0280 Cambridge, MA 02138

## Calling of Heirs

1. **Maria Martha Keller**, born on May 29, 1882 in Thalheim ZH and

2. **Maria Lidia Keller**, born on June 4, 1887 in Thalheim ZH, both citizens of Schweizersholz TG and Thalheim ZH, daughters of Johann Jacob (1854 to 1902) and Maria née Bosshart (1848 to 1913) are missing. Presumably, the last place of residence of the missing persons was in the United States of America. For the rest, no data are

available on the two missing persons.

Anyone who can provide information on the fate of the missing persons is requested to report to the undersigned judge by December 31, 1992. In the event that the calling should be unsuccessful, the two missing persons would be declared as legally dead. Andelfingen, June 17, 1992  
*Magistrate in summary proceeding of the District Andelfingen  
CH-8450 Andelfingen/Switzerland* ■

## Notice to Heirs

The Inheritance Department of the City of Basel seeks the heirs of

**Hans Hofmann**, born 6-9-1903, single, of Basel and Kirchdorf/BE. Deceased 6-24-1991.

1. The cousin, Hans Wegmüller-Halseth, born 4-14-1900 in Berne, married to Inga Halseth on 8-10-1940 in Red Deer, Canada, or his children Rose Ann Elise, born 6-9-1941, Carol Lee, born 10-2-1942, Sonya Faye, born 1-28-1944, and John Wilfred, born 4-2-1945.

2. The cousin, Emma Thalmer-Wegmüller, born 12-7-1893 in Berne, married to Johann Ernst Thalmer on 10-27-1923 in Stettler, Canada, or her children.

3. The cousin, Emil Maag, born 1-20-1885, had resided in 1976 in Long Beach, California, or his children.

4. The cousin, Emil Brandenberger, born 11-14-1893, had resided in 1939 in Chicago, or his children.

Persons deriving their hereditary succession from the persons named above are herewith requested to report within a period of one year, counted from the publication of this notice, to the undersigned estate office, with simultaneous presentation of proof of ancestry, from which the relationship is evident.

*Erbschaftsamt Basel-Stadt  
Rittergasse 10  
4001 Basel/Switzerland* ■

## Geschenke aus der Heimat:

JURA-Brezeleisen, electric, 110V	\$ 125.-
STOECKLI-Electric Raclette Stove for 6	\$ 90.-
Electric Raclette Stove w. grill for 6	\$ 90.-
Stone-Grill w. 2 burners	\$ 90.-
+Shipping: East of Miss. \$5.-	West of Miss. \$ 7.50

**EUROPE CONNECTION, INC.**  
38 Stumpfield Rd. - East Kingston, N.H. 03827.  
Tel. (603) 778-9205

Live in this high caliber community in a customized condominium of one to seven rooms. Amenities include pool, hydrotherapy and sauna. This area abounds with excellent leisure facilities including skiing, walking, sailing, golf, four-star restaurants, museums and historic sites. Weesen is 45 minutes from Zurich and direct train access to the airport is nearby.