

Zeitschrift: Swiss review : the magazine for the Swiss abroad
Herausgeber: Organisation of the Swiss Abroad
Band: 2 (1975)
Heft: 4

Anhang: Local news : Swiss Society of New Zealand

Nutzungsbedingungen

Die ETH-Bibliothek ist die Anbieterin der digitalisierten Zeitschriften auf E-Periodica. Sie besitzt keine Urheberrechte an den Zeitschriften und ist nicht verantwortlich für deren Inhalte. Die Rechte liegen in der Regel bei den Herausgebern beziehungsweise den externen Rechteinhabern. Das Veröffentlichen von Bildern in Print- und Online-Publikationen sowie auf Social Media-Kanälen oder Webseiten ist nur mit vorheriger Genehmigung der Rechteinhaber erlaubt. [Mehr erfahren](#)

Conditions d'utilisation

L'ETH Library est le fournisseur des revues numérisées. Elle ne détient aucun droit d'auteur sur les revues et n'est pas responsable de leur contenu. En règle générale, les droits sont détenus par les éditeurs ou les détenteurs de droits externes. La reproduction d'images dans des publications imprimées ou en ligne ainsi que sur des canaux de médias sociaux ou des sites web n'est autorisée qu'avec l'accord préalable des détenteurs des droits. [En savoir plus](#)

Terms of use

The ETH Library is the provider of the digitised journals. It does not own any copyrights to the journals and is not responsible for their content. The rights usually lie with the publishers or the external rights holders. Publishing images in print and online publications, as well as on social media channels or websites, is only permitted with the prior consent of the rights holders. [Find out more](#)

Download PDF: 27.12.2025

ETH-Bibliothek Zürich, E-Periodica, <https://www.e-periodica.ch>

LOCAL NEWS

SWISS SOCIETY OF NEW ZEALAND

Patron: Charge d'affaires Mr F. ADAMS

Embassy of Switzerland: P.O. Box 386 Wellington
Phone 721-593

President: Mr A. K. BINDER, 34 Kinross Street
Blockhouse Bay, Phone 678-767 Auckland

"Helvetia": Mr ARNOLD BILAND
Frankton R.D.8 Phone 493-539 Hamilton

Riflemaster: Mr A. W. MULLER, 11 Catton Cres.
Mt Roskill, Phone 674-725 Auckland

CLUB PRESIDENTS

Auckland: Mr HANS HESS, 26 Glendhu Rd
Auckland 10, Phone 446-972

Christchurch: Mr W. SCHIBLI, 72 Howford Rd
Phone 325-525 Christchurch 2

Hamilton: Mr E. P. STAHELI, 25 Carlson Cres.
Phone 69-957 Hamilton

Taranaki: Mr LEN CHAMBERLAIN
Skeet Road, Kapuni, Phone 8767 Manaia

Wellington: Mrs L. NAPP, 61 Pembroke Road
Northland, Phone 757-594 Wellington

NEWS FROM THE EMBASSY

**Message from our Charge d'Affaires
Mr Fritz Adams**

My Dear Compatriots,

I am sorry that since my wife and I, together with our two children, arrived in New Zealand in May this year, it has not been possible for us personally to make as many contacts within the Swiss Community as we would have liked to. However, the coming Festive Season gives me the opportunity to wish each and every one of you, also in the name of my wife, a Very Happy Christmas and to send you our sincere thoughts for good health and prosperity in the coming year.

We are looking forward very much indeed to the pleasure of meeting as many of our compatriots as possible in the near future.

Yours sincerely,
F. ADAMS

CHRISTMAS MESSAGE

from

THE PRESIDENT OF THE SWISS SOCIETY

Once again the Christmas season is upon us. This is a time for the celebrating of the birth of Christ, a time also for the coming together of families to share in this annual rejoicing with their children, and friends. Presents will be exchanged, and the scene will be one of much gaiety and happiness.

I sincerely trust that for all Swiss living in New Zealand, this Christmas and New Year will be a most enjoyable one, with memories of the happy occasion extending well into the years.

A. K. BINDER,
President

NEWS FROM SWITZERLAND

F.C. Brugg is visiting N.Z. late in January. They will stay in Hamilton from the 24th to the 26th and play one game against Hamilton A.F.C. on Sunday the 25th at Muir Park, Frankton.

We hope to see plenty of Swiss supporters at the game.

FORTHCOMING EVENTS

Hamilton Swiss Club

Our first big event next year will be the traditional Picnic on Sunday, 8th February, at Mr and Mrs Villiger's farm in Kiwitahi.

The President and Committee of your Hamilton Swiss Club wish all members and friends a most enjoyable Christmas and good health and prosperity in the coming year.

R.E.W.

Wellington Swiss Club

KEGELN AND/OR JASSEN:

February 14th, at the Clubhouse, Mr Fuhrer's farm, Ohariu Valley. Free transport from Johnsonville Railway Station by arrangement, ring 788-872.

SHOOTING:

On the afternoon of February 1st, on Mr Cherer's farm, Whiteman's Valley. For further information and transport please ring Mr T. Hangarther, phone 768-841.

— L.N.

SPORTS IN SWITZERLAND

FUSSBALL RESULTATE

Meisterschaft Nationalliga A

Biel - Zurich 1:3 (0:0)
 La Chaux-de-Fonds - Basel 1:2 (0:0)
 Grasshoppers - Young Boys 2:1 (0:1)
 Lausanne - St. Gallen 2:0 (0:0)
 Lugano - Xamax 0:1 (0:0)
 Servette - Chenois 3:1 (1:0)
 Winterthur - Sitten 0:3 (0:1)

Meisterschaft Nationalliga B

Gossau - Vevey 1:2 (1:1)
 Luzern - Grenchen 3:1 (0:1)
 Martigny - Bellinzona 1:1 (0:0)
 Nordstern - Aarau 0:0
 Wettingen - Chiasso 3:0 (0:0)
 Etoile Carouge - Raron (1:0)
 Freiburg - Young Fellows 0:1 (0:0)

DIE RANGLISTEN

Nationalliga A

1. Zurich	13	9	3	1	28:12	21
2. Servette	13	7	4	2	26:10	18
3. Basel	13	7	4	2	31:16	18
4. Grasshoppers	13	8	2	3	24:16	18
5. St. Gallen	13	7	3	3	24:17	17
6. Lausanne	13	7	3	3	21:19	17
7. Young Boys	13	5	6	2	17:9	16
8. Xamax	13	6	3	4	18:14	15
9. Chenois	13	4	4	5	20:20	12
10. Sitten	13	2	6	5	20:28	10
11. Winterthur	13	3	1	9	11:29	7
12. Biel	13	2	2	9	9:25	6
13. Lugano	13	-	4	9	4:18	4
14. La Chaux-de-F.	13	1	1	11	10:30	3

SYLVANA WINES

Turangi



ALL ROADS LEAD TO TURANGI

Highway No. 1



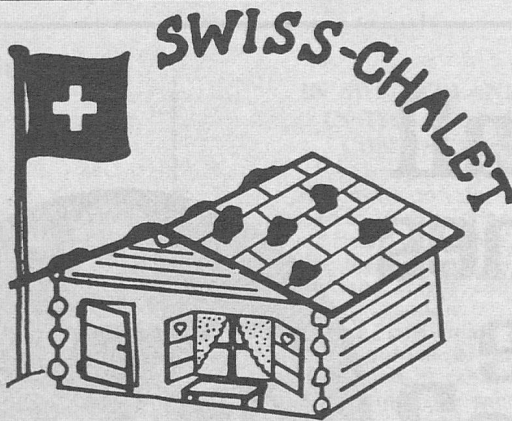
Specialty Table Wines



Proprietor:

MAX A. MULLER

TURANGI TOWN CENTRE



HOMEMADE cakes
our speciality

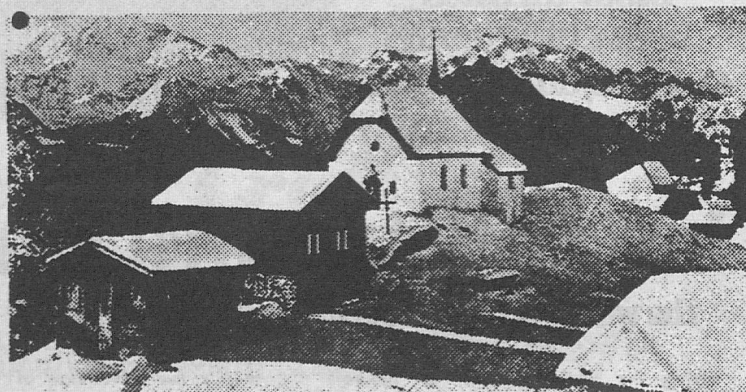
PROPRIETORS: MR & MRS BERT FLUHLER

Open
7 Days

Restaurant
and
Coffee-Bar

ENGLISH and
CONTINENTAL
MEALS

Hamilton
270 Victoria Street
(Opposite
Commercial Hotel)
Phone 82-305



Go home with
DALGETY TRAVEL
The Nationwide complete
travel service Worldwide
Land-Sea-Air

Put your travel arrangements in the experienced hands of Dalgety Travel. The Dalgety Travel office near you will give you all the help and information you'll need. And while you're there—ask for details about THE SWISS HOLIDAY PASS which enables you to travel freely around Switzerland by rail, boat or postal coach at special low cost.

Hamilton:
548 Victoria St, PO Box 942.
Tel. 80-929.

Te Awamutu:
7 Bank St, PO Box 508. Tel. 7105.

Te Kuiti:
Taupiri St, PO Box 273. Tel. 1017.

Hawera:
151 Princes St, PO Box 429.
Tel. 84-181.

Wanganui:
Victoria Ave, PO Box 448.
Tel. 30-969 or 4029.

Wellington:
161 Featherston St, PO Box 1498.
Tel. 70-389.

Christchurch:
Cnr Cashel and Liverpool Sts.,
PO Box 908. Tel. 62-079.

Plus—32 other
offices throughout New Zealand.
Also throughout Australia and Office in
London.

Auckland:
36 Fort St, PO Box 959.
Tel. 74-969 or 362-156.



BONDED MEMBER OF TRAVEL AGENTS ASSOCIATION OF N.Z.

7899

Are all airlines the same?

Most airlines boast of French cuisine, champagne and savoir-faire



but only two are French

the whole thing comes naturally to UTA & Air France.

Flying the world's largest air network naturally has its advantages. For a start, being French takes care of the "Joie de vivre": warm genuine French hospitality, a smiling French Welcome Service at every stopover, French gourmet meals and wines, in-flight movies and 7 channel stereophonic sound. Then

there's the advantage of flying in our airliners — the giant DC8 Super 62, the Boeing 727-200, our very French Caravelles and later the supersonic Concorde. Only UTA French Airlines and Air France weave a network of exclusive French delights wherever you fly in the world. Ask your travel agent or UTA.

UTA WORLD AIR
WIDE FRANCE

Nationalliga B

1. Luzern	12	9	1	2	34:12	19
2. Bellinzona	12	6	4	2	21:15	16
3. Etoile Carouge	12	6	3	3	22:17	15
4. Young Fellows	12	6	2	4	17:16	14
5. Freiburg	12	5	3	4	26:20	13
6. Wettingen	12	5	3	4	17:18	13
7. Nordstern	12	4	3	5	21:18	11
8. Gossau	12	4	3	5	20:21	11
9. Raron	12	5	1	6	13:20	11
10. Grenchen	12	4	2	6	24:22	10
11. Martigny	12	3	4	5	13:24	10
12. Vevey	12	3	3	6	14:23	9
13. Aarau	12	2	4	6	12:19	8
14. Chiasso	12	1	6	5	11:20	8

Fussball-WM 78: Schweiz gegen Schweden und Norwegen. Die Schweizer Fussball-Nationalmannschaft trifft in der Ausscheidung für die Weltmeisterschaft 1978 in Argentinien auf Schweden und Norwegen. Ohne Zweifel hatte die Schweiz bei der Auslosung in Guatemala City schwerere Gegner ziehen können als Schweden, den Weltmeisterschaftsfünften von 1974, und die international noch kaum einmal hervorgetretenen Norweger. So haben beispielsweise Italien und England, die beiden Benelux-Rivalen Holland und Belgien, Schottland und die Tschechoslowakei sowie Jugoslawien, Spanien und Rumänien gegeneinander anzutreten.

"WELDING 75," A NEW SPECIALISED TRADE FAIR IN ZURICH

A new fair specialising in welding and cutting equipment is to be held for the first time, from 24th to 29th November, 1975, in Zurich. Manufacturers of welding and cutting equipment will have an opportunity of displaying their products there. "Welding 75," as the new fair is called, will number 24 exhibitors in an exhibition area covering some 60,000 sq. ft. This event will be completed by press days, and a number of instructive and interesting demonstrations. (SODT)

AN INGENUOUS SWISS IDEA FOR THE BUILDING TRADE

Builders are familiar with the problems raised by fixing collectors at the foot of a rainwater pipe. These small cement decantation cubes collecting the water draining from gutters and pipes are generally placed on brackets before the foundations have been filled in, which calls for the use of scaffolding and takes a comparatively long time. Thanks to the ingenious idea of a Lausanne (Vaud - Switzerland) firm, which thought of hanging these collectors in place instead of laying them on a bracket, they have become much more rapid and economical to put in position. The system perfected by the Swiss firm is simple: before filling with cement, a piece of galvanised metal, previously bent and bored, is inserted in the mould; the fixing lugs

are therefore firmly anchored in the sides of the collector which can thus be stored and handled quite easily. On the building site, before being secured in position, the bent part of the metal sheet is unfolded, two holes are bored in the wall, and the two screws and plugs supplied with the collector inserted. All that remains is for the collector to be hung in position. This system, for which a patent has been applied, offers many advantages: the collector is firmly attached to the building in less than 10 minutes; owing to the fact that it is placed in position before filling in the foundations, the architect can check that it has been properly connected to the drainpipes; in addition its square shape makes it easier to fit into the paving of a garden. (SODT)

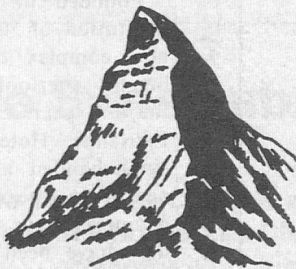
**WHEN IN WELLINGTON
VISIT THE**

Matterhorn Coffee Bar

AT 106 CUBA STREET

Delicious Morning & Afternoon Teas — Light Luncheons

Proprietors: Mr and Mrs Juerg Stucki.



IN SWITZERLAND, THE RISE IN THE COST OF LIVING CONTINUES TO DROP

According to the Swiss Economic Research Commission, several signs would seem to suggest that the slowing up in the rise in consumer prices in Switzerland might continue during the next few months. These signs are visible in particular in the past and future evolution of the foodstuffs and raw materials markets, from the answers to a questionnaire sent out to retailers concerning prospects with regard to purchase prices, as well as from the fact that several plans to increase prices have been abandoned. The Commission considers that, between now and the end of the present year, the rate of rise in the cost of living calculated according to the consumer price index will be reduced to about 5%. (SODT)

SOLAR POWER MADE ACCESSIBLE TO THE CONSUMER

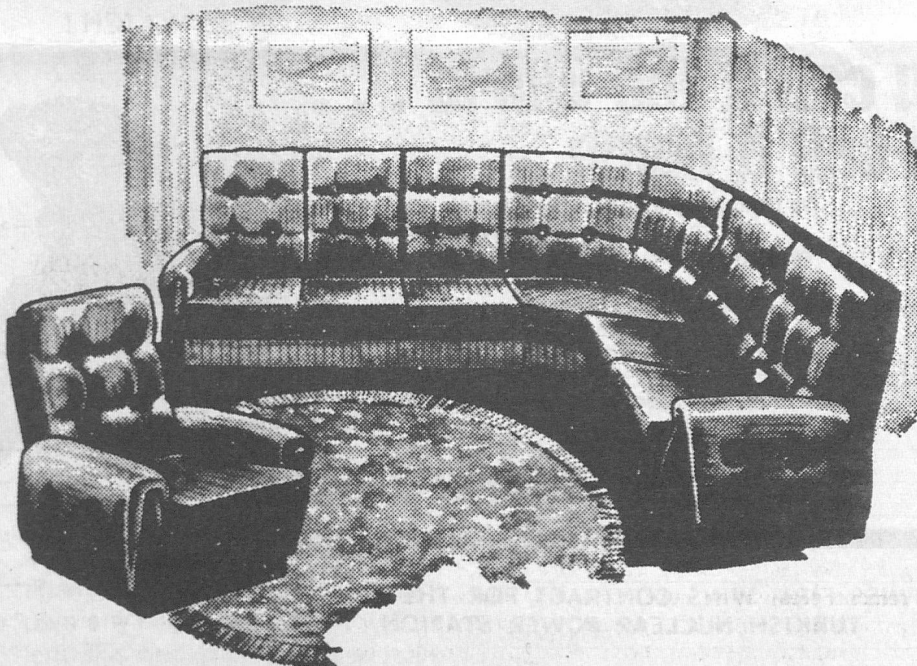
For the first time in Switzerland, a solar energy water-heater has been made on the industrial scale and is thus accessible to the general public. This system, which has just been put on the market, is the result of the combined efforts of two Lausanne firms (Vaud - Switzerland). The water heater comprises an extremely efficient selective surface captor, connected to a calory storage device. It is designed to supply, both winter and summer alike, a family's daily hot water needs. Thought has also been given to its appearance, so that it can be incorporated as unobtrusively as possible on a conventional roof, a flat roof, in a garden or next to a swimming pool. In most cases this device will be connected up to an existing hot-water heating system, which can then be brought into use in the event of a prolonged period without sunshine. The two Swiss firms are also working on the prototype of a solar facade for heating buildings. In addition, one of them has worked out plans for the first industrial waste purification plant to be run exclusively on solar energy. The technique used is galvanoplasty. Operating in a closed recycling circuit, the industrial waste purification plant will enable all raw materials used to be recuperated and thus avoid any risk of pollution. This project will later be made accessible to other firms facing the same problems and will result in considerable savings. (SODT)

Swiss Craft Ltd

Manufacturers of

FINE LOUNGE SUITES

**AVAILABLE THROUGH ALL LEADING FURNITURE SHOPS
THROUGHOUT THE NORTH ISLAND . . .**



• SAN MORITZ Corner Suite

- ☆ **We have a range of attractive and very popular Lounge Suites with Rubber, Foam Plastic and Dacron Cushions.**
- ☆ **You select the Covers in any Colour and Price Range.**

**Details from the Factory
39 COLOMBO STREET, FRANKTON**

**P.O. Box 5253
Frankton**

**Manager:
J. A. STAHELI**

**Telephone
77-229 Hamilton**



You call it the world . . . We call it home

We fly to more than 100 cities in over 65 countries. That's why we know the world so well we call it home.

Wherever you want to go Pan Am can take you - quickly, with a minimum of fuss and bother.

We have regular flights to Los Angeles where you connect with our 747 Polar route service to London. We fly to Melbourne. And to Sydney where you can connect with our services to Europe via the Orient.

See your travel agent or Pan Am for full details of fares and departure times.

PAN AM

8691

SWISS FIRM WINS CONTRACT FOR THE FIRST TURKISH NUCLEAR POWER STATION

An agreement was recently signed in Ankara between the Turkish State Electricity Company (TEK) and the Suselectra engineering consultants firm (Basel - Switzerland) in its capacity as head of a consortium of engineers, concerning the provision of plans for the first nuclear power station to be constructed in Turkey. The members of the consortium headed by Suselectra are the Swiss engineering consultants firms of Emch & Berger Co. Ltd. in Berne, and Basler & Hofman, in Zurich, as well as the Group for Atomic and Advanced Activities (France). The work entrusted to the consortium comprises all the services of an engineering consultants firm, from the initial drawing up of the plans to the final supervision of the starting up of the plant, including the supervision of the actual construction work. The power station is due to go into operation in 1984. (SODT)

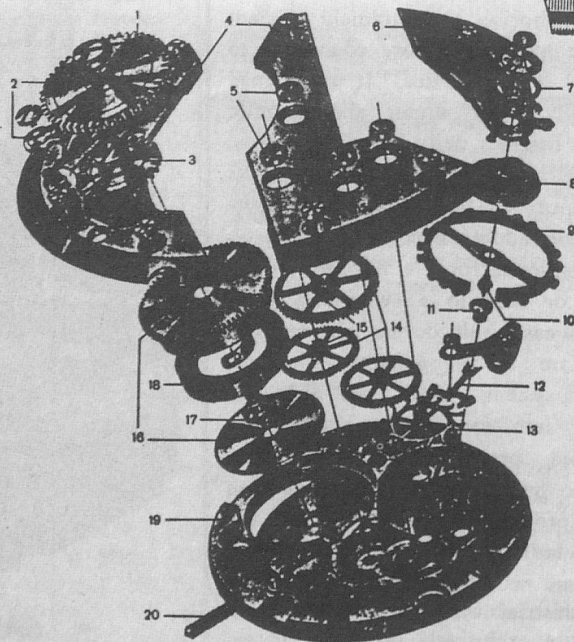
HOTELKEEPERS FROM ALL OVER THE WORLD TRAINED IN LAUSANNE

Founded in 1893, the Lausanne Hotel School, the first institution of its kind in the world, has just moved into the new complex of buildings it had built for itself on the heights overlooking this town on the Lake of Geneva. In the 3½ year course, combining theory and practice, the Lausanne Hotel School prepares its students to manage single-handed an establishment with a restaurant. So far, nearly eighteen thousand students, from some eighty countries, have passed through the school in Lausanne where they have been instructed in the most modern management methods and let into the secrets of Switzerland's renowned hotelkeeping tradition. But the Lausanne Hotel School owes its reputation not only to the high standard of its graduates; for many years, it has assisted in the foundation of hotelkeeping schools all over the world and cooperated in the training of their teaching staff. In particular, it sponsors the hotelkeeping schools in Nairobi and Bandung. (SODT)

The Watch for a World

where every second counts.

It must be a SWISS
WATCH!



The Swiss Watchmakers and Jewellers of Papakura have the Tradition of Three Generations in the Watch-making Field and stock the best brands of only Swiss Watches

J. & R. Baumann

SALES & SERVICE

Great South Road, Papakura. Tel. 85-569. P.O. Box 7