

**Zeitschrift:** Cahiers d'archéologie romande  
**Herausgeber:** Bibliothèque Historique Vaudoise  
**Band:** 165 (2016)

**Artikel:** Ornementation et discours architectural de la "villa" romaine d'Orbe-Boscéaz : volume 3 : planches  
**Autor:** Dubois, Yves  
**Rubrik:** Plans  
**DOI:** <https://doi.org/10.5169/seals-835632>

### **Nutzungsbedingungen**

Die ETH-Bibliothek ist die Anbieterin der digitalisierten Zeitschriften auf E-Periodica. Sie besitzt keine Urheberrechte an den Zeitschriften und ist nicht verantwortlich für deren Inhalte. Die Rechte liegen in der Regel bei den Herausgebern beziehungsweise den externen Rechteinhabern. Das Veröffentlichen von Bildern in Print- und Online-Publikationen sowie auf Social Media-Kanälen oder Webseiten ist nur mit vorheriger Genehmigung der Rechteinhaber erlaubt. [Mehr erfahren](#)

### **Conditions d'utilisation**

L'ETH Library est le fournisseur des revues numérisées. Elle ne détient aucun droit d'auteur sur les revues et n'est pas responsable de leur contenu. En règle générale, les droits sont détenus par les éditeurs ou les détenteurs de droits externes. La reproduction d'images dans des publications imprimées ou en ligne ainsi que sur des canaux de médias sociaux ou des sites web n'est autorisée qu'avec l'accord préalable des détenteurs des droits. [En savoir plus](#)

### **Terms of use**

The ETH Library is the provider of the digitised journals. It does not own any copyrights to the journals and is not responsible for their content. The rights usually lie with the publishers or the external rights holders. Publishing images in print and online publications, as well as on social media channels or websites, is only permitted with the prior consent of the rights holders. [Find out more](#)

**Download PDF:** 12.01.2026

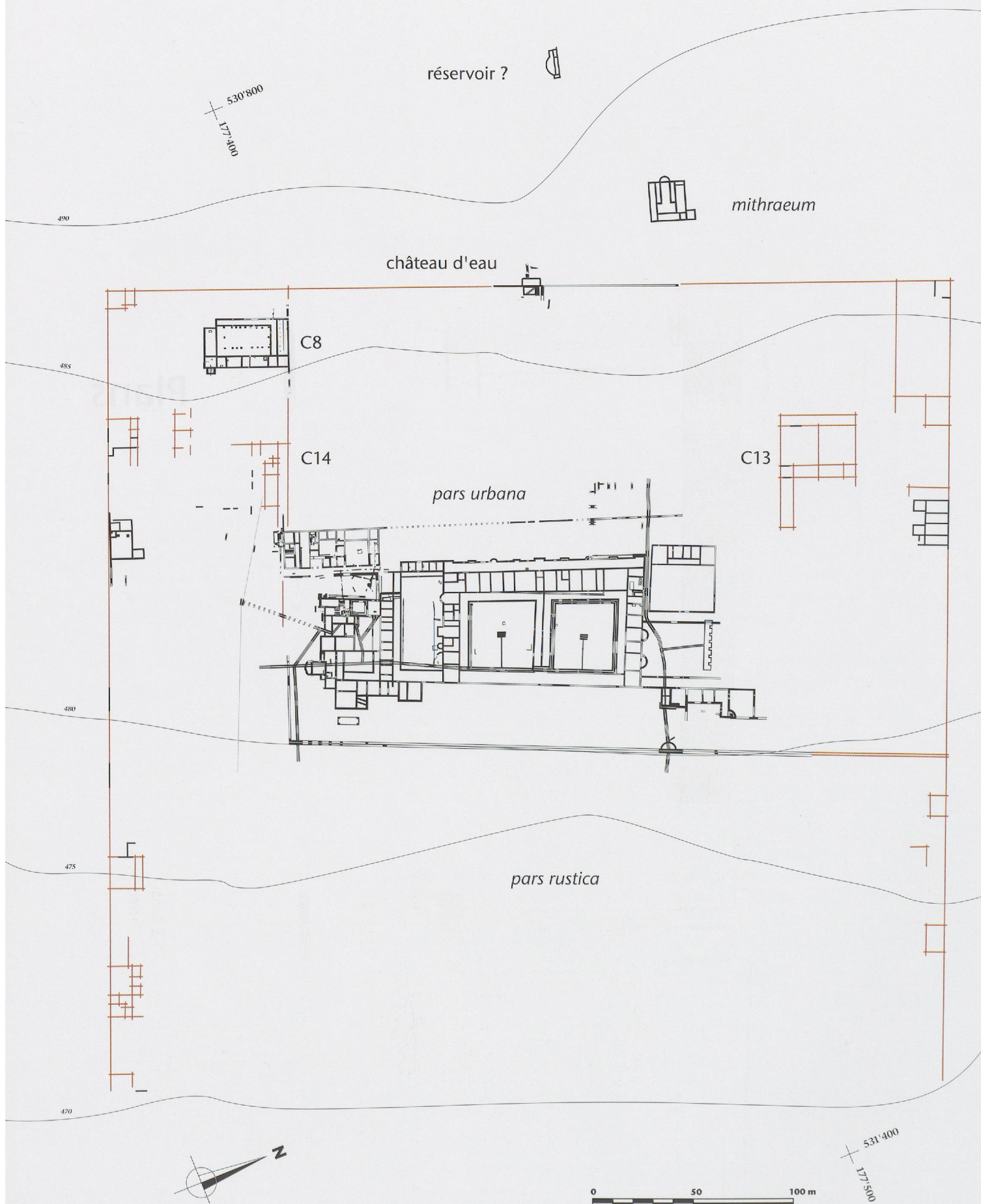
**ETH-Bibliothek Zürich, E-Periodica, <https://www.e-periodica.ch>**

## Plans



Planche 1  
Planche 2

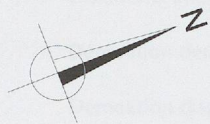
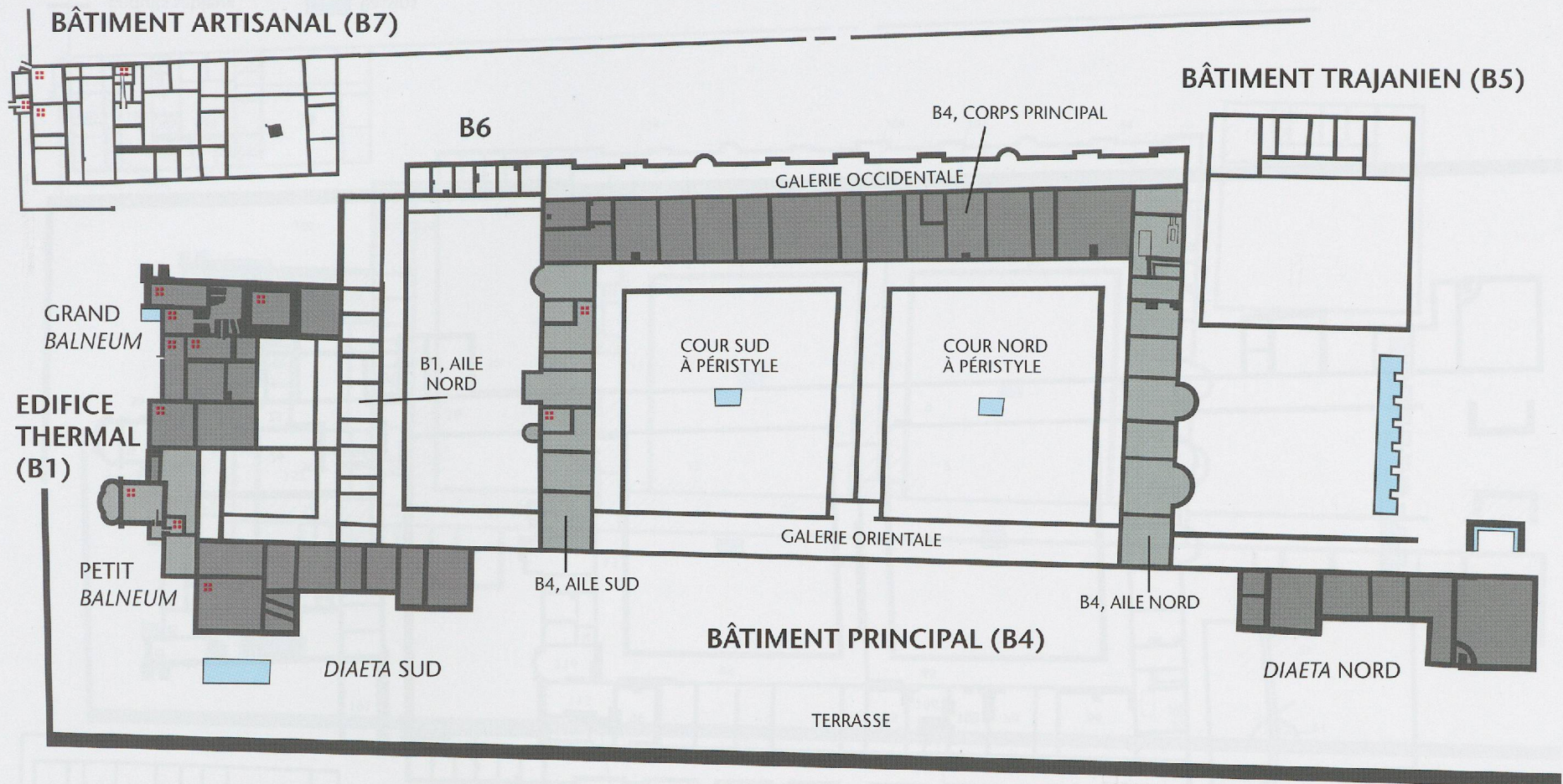




**Planche 1**

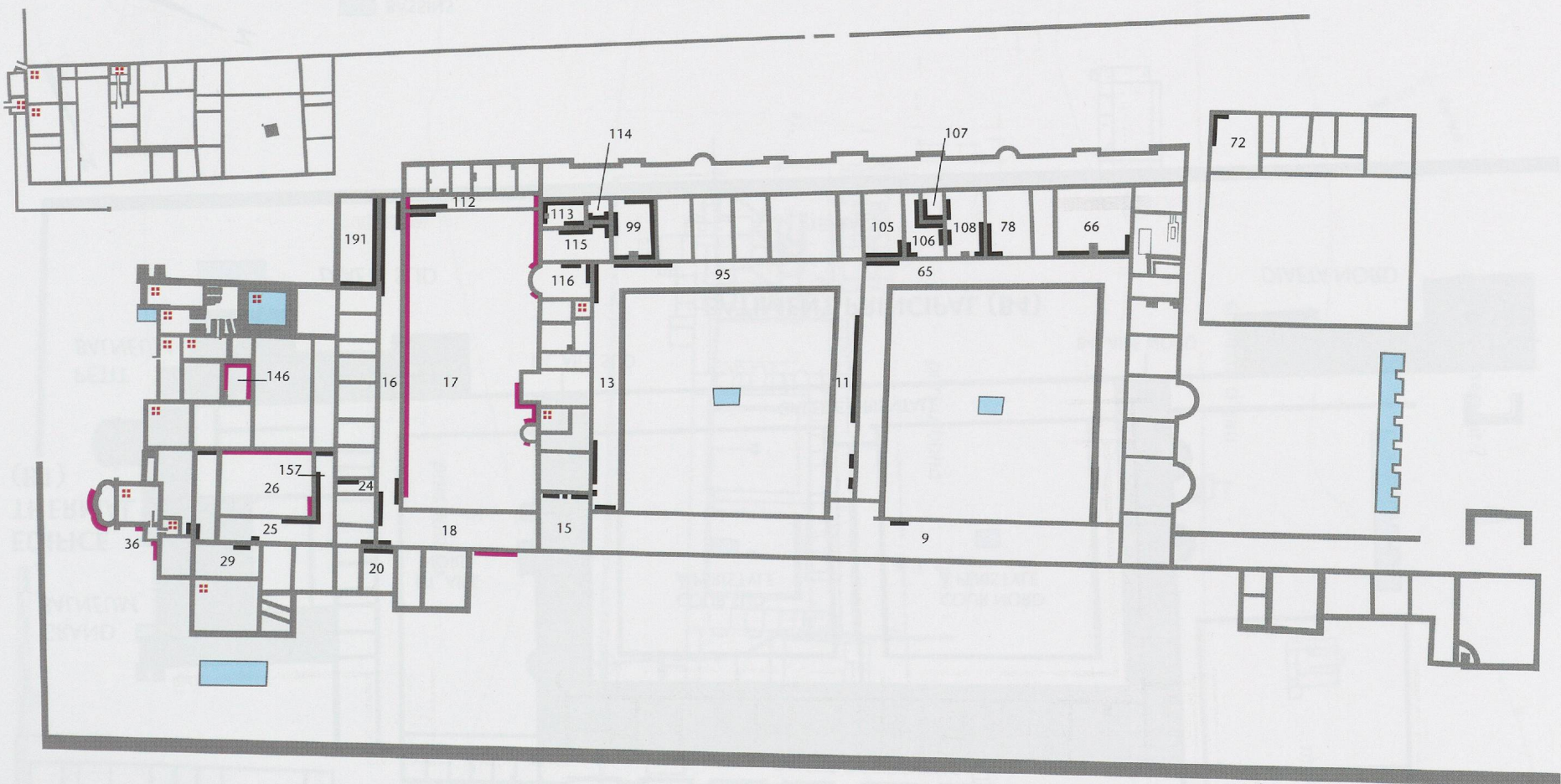
La villa d'Orbe-Boscéaz dans son environnement topographique; état 2006.  
En traits fins bruns, les structures repérées par photo aérienne (éch.: 1:2500).





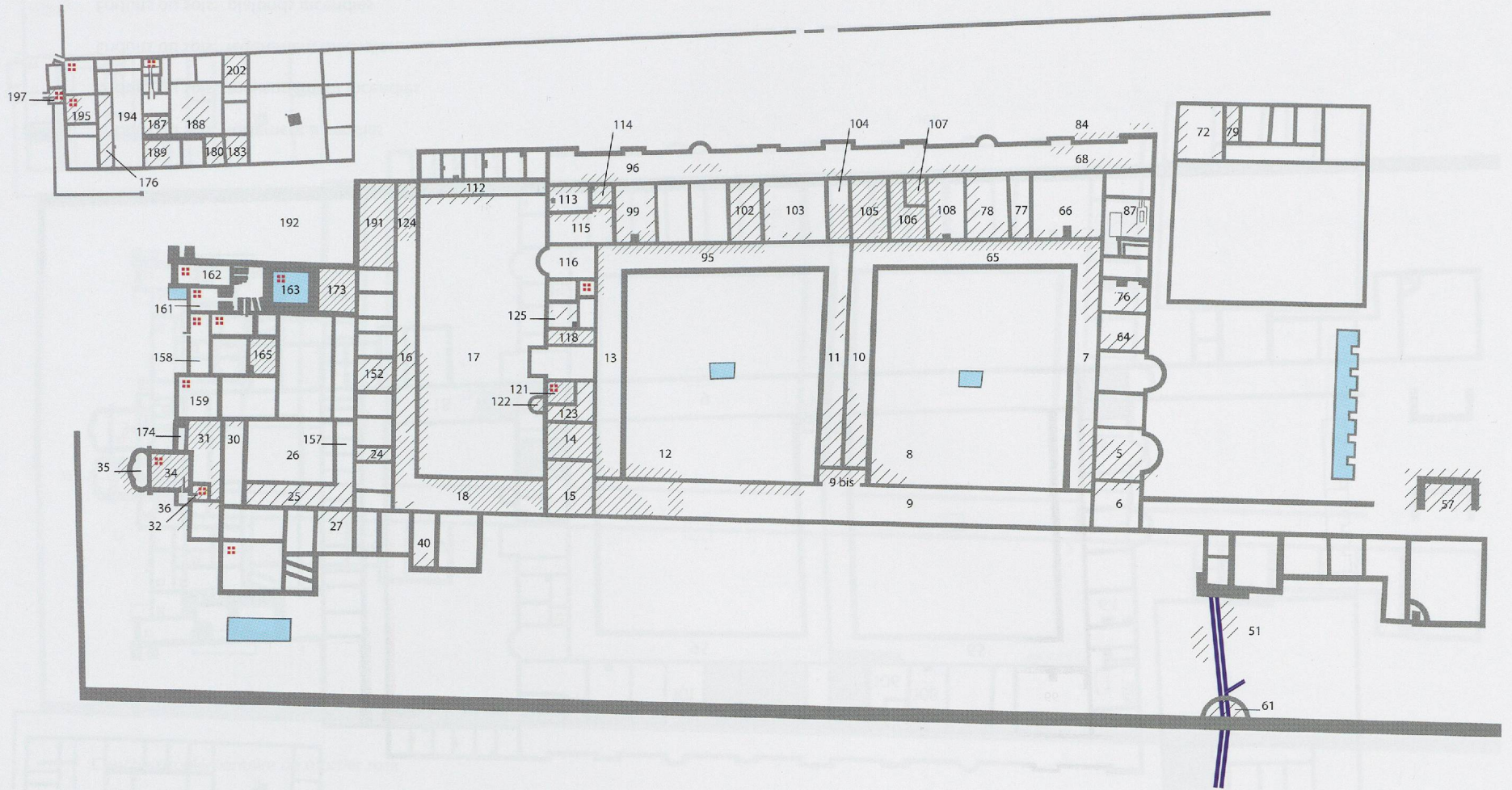
- BASSINS
- HYPOCAUSTES



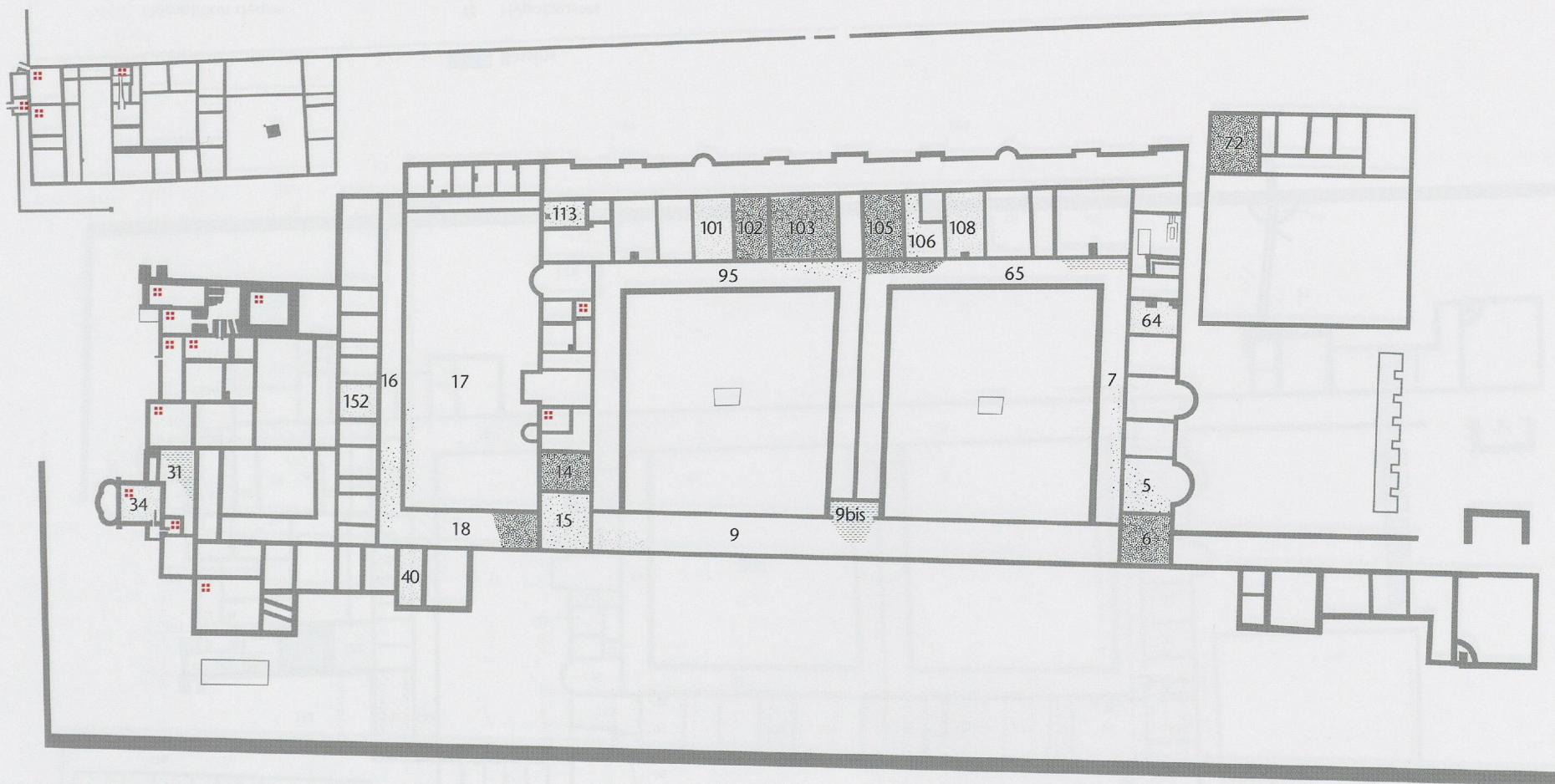







- |                      |               |
|----------------------|---------------|
| — Enduits sableux    | ■ Bassins     |
| — Enduits de tuileau | ■ Hypocaustes |



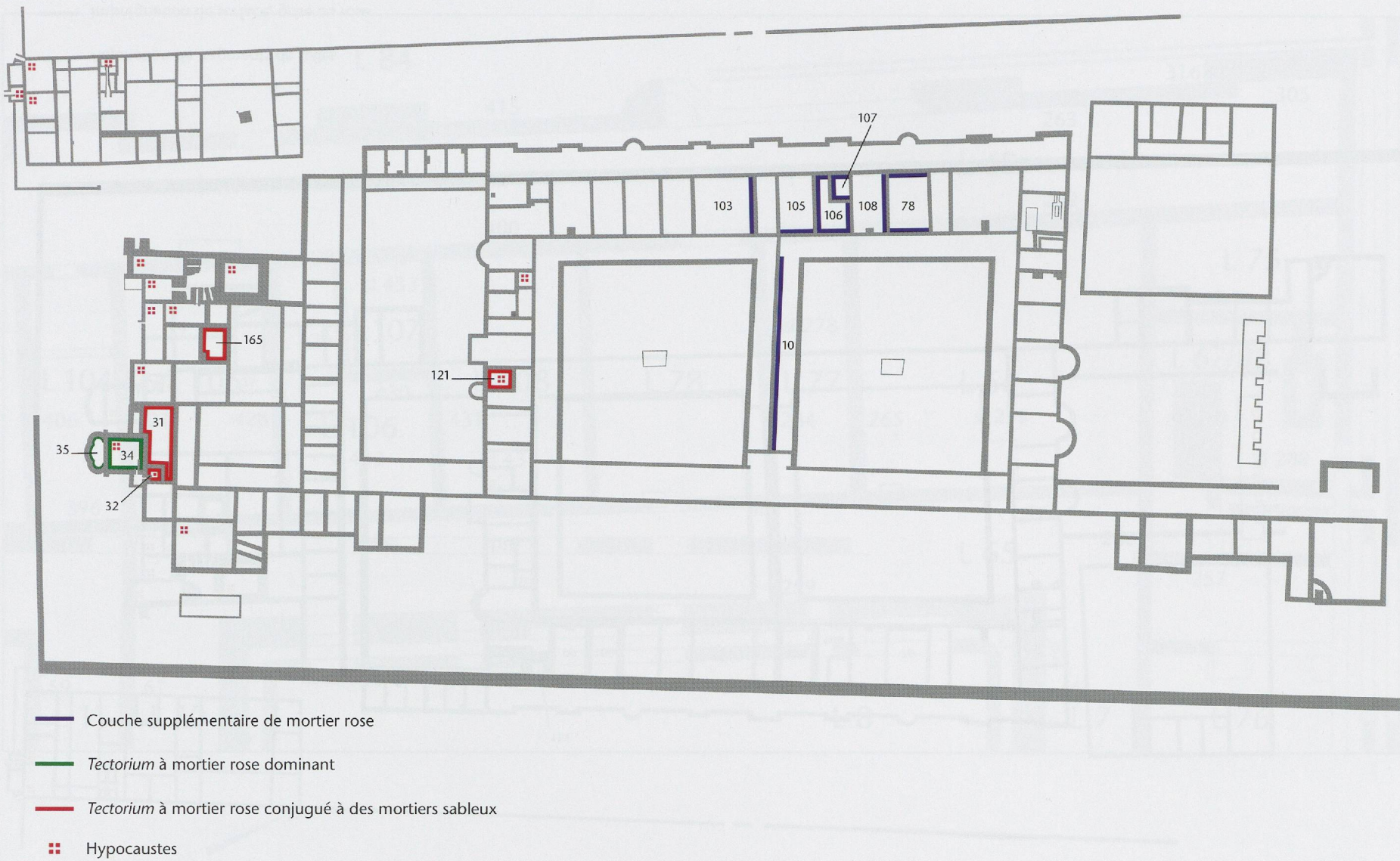




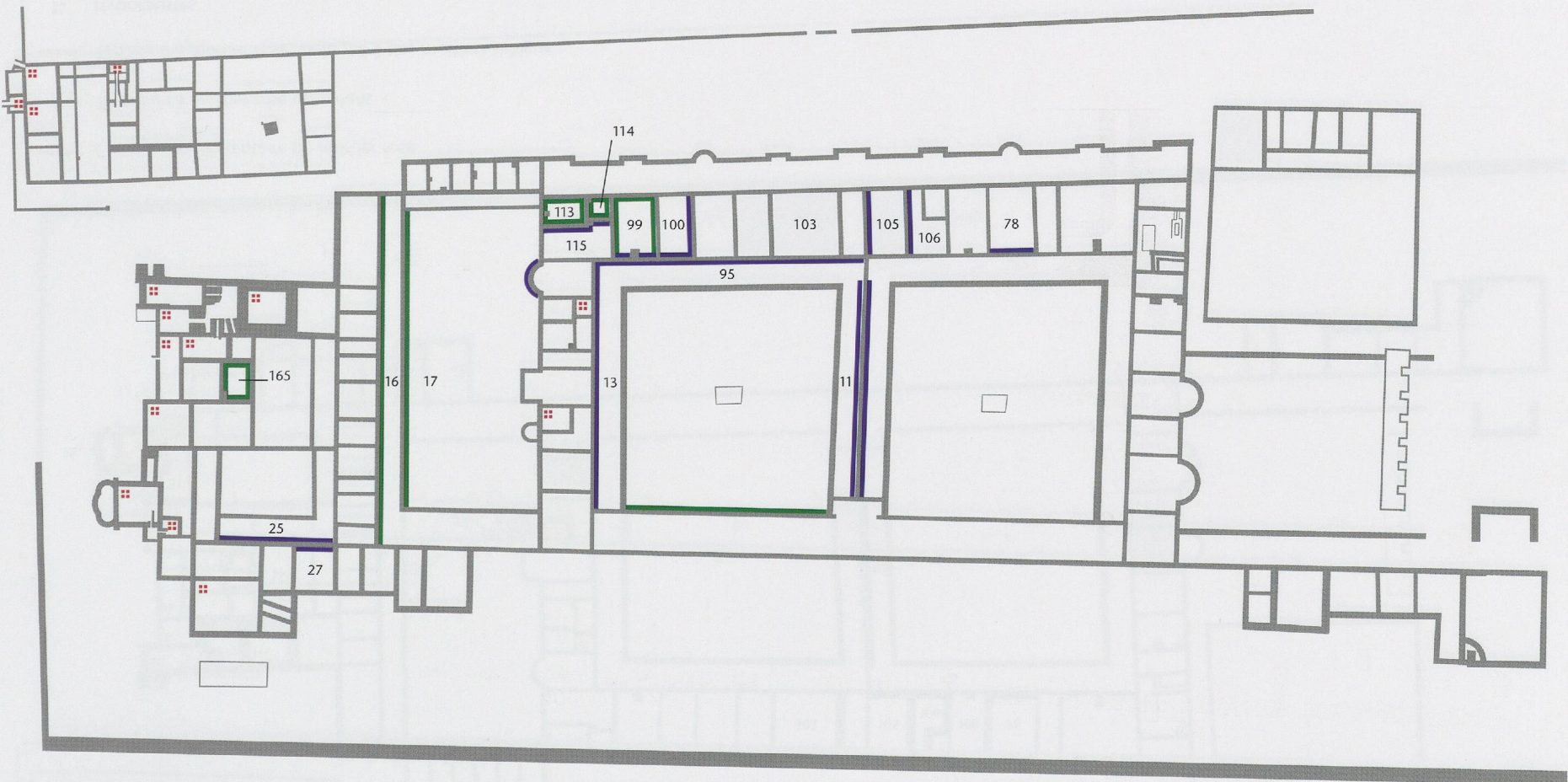


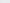
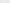
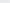
-  Enduits ou sols: fortement incendiés
-  Enduits ou sols: moyennement incendiés
-  Enduits ou sols: légèrement incendiés
-  Enduits ou sols: plafonds incendiés
-  Hypocauste









-  Adjonction de fragments de tuiles
-  Imprégnation de surface, grise ou rose
-  Hypocaustes



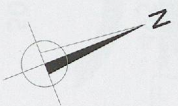
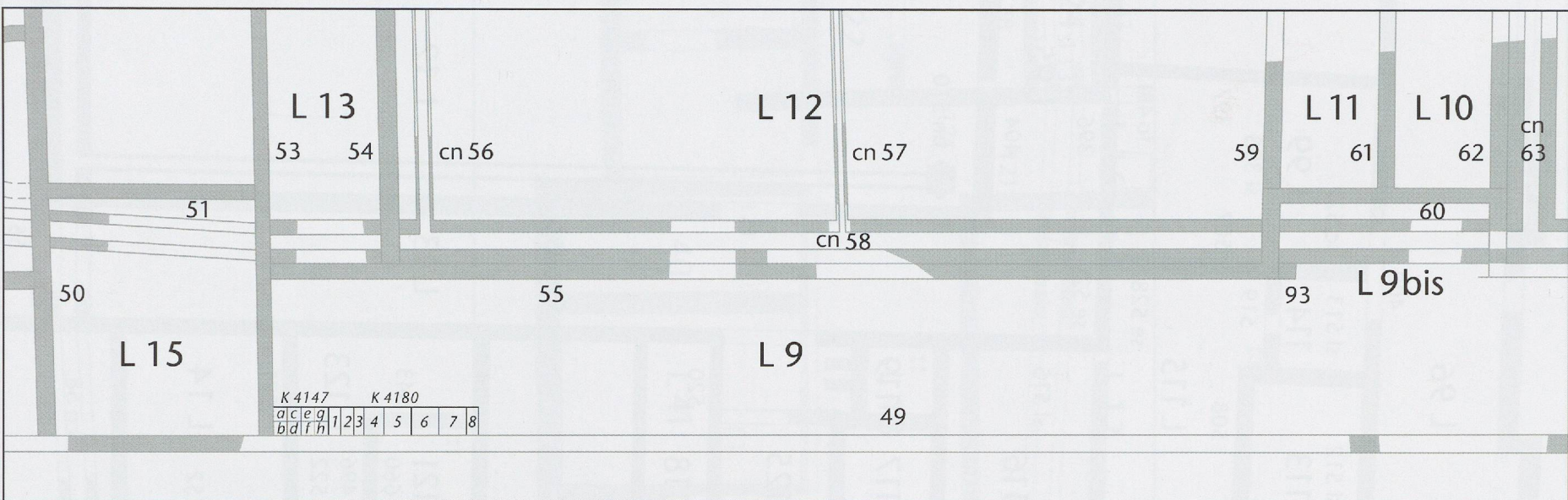


A horizontal scale bar with a black line and vertical tick marks. The number '0' is at the left end and '10m' is at the right end. There are three major tick marks between 0 and 10m, dividing the scale into four equal segments of 2.5m each.









0 10m



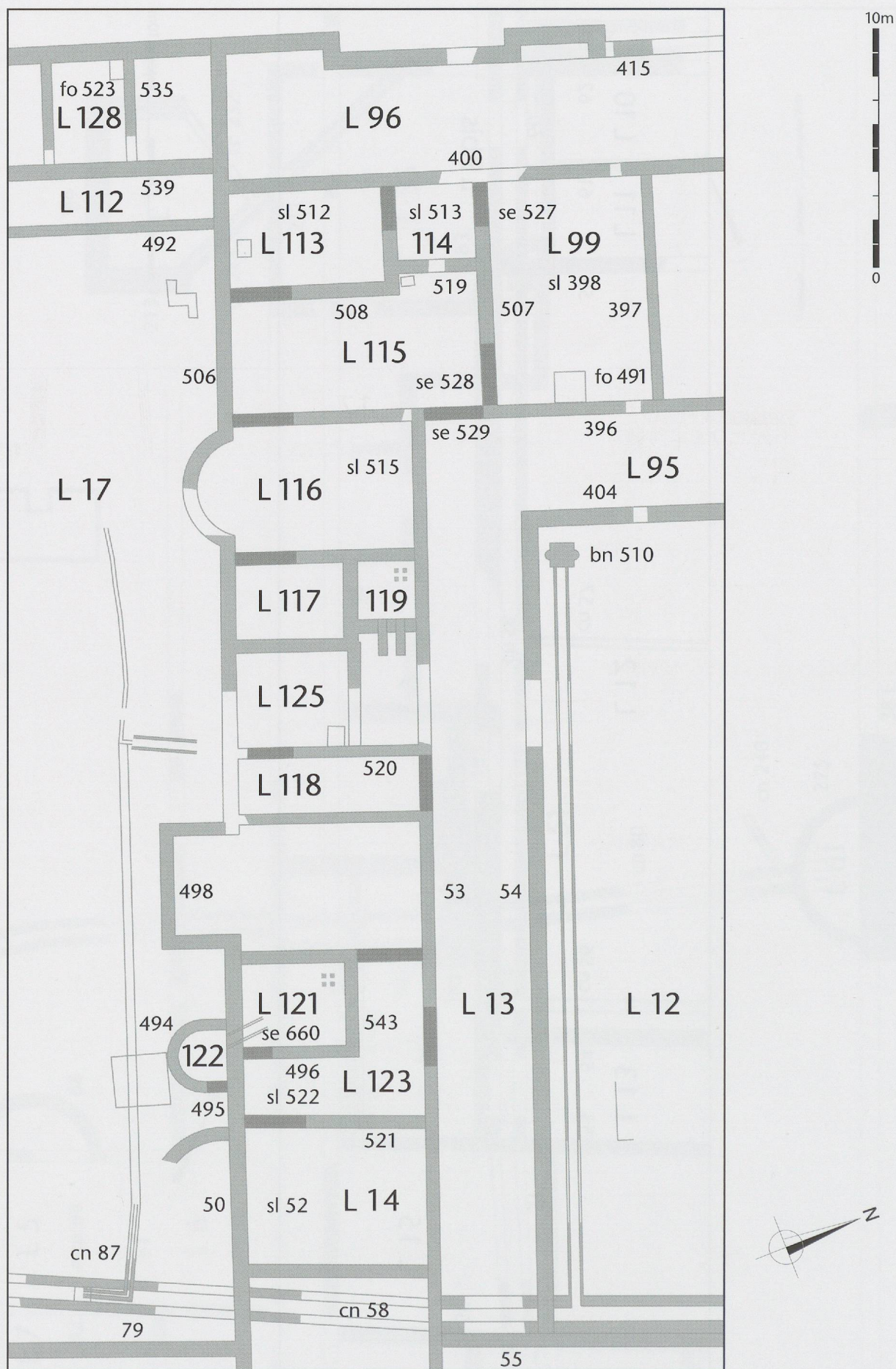
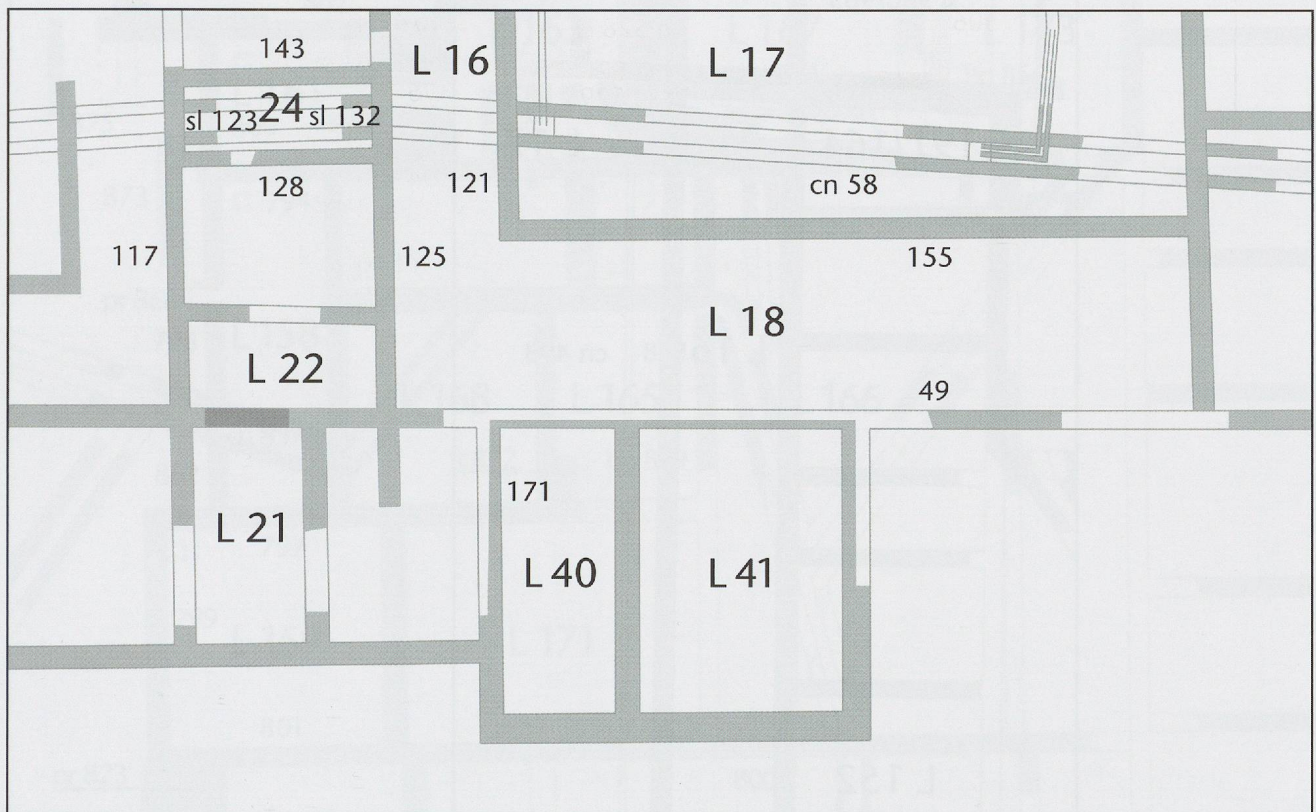


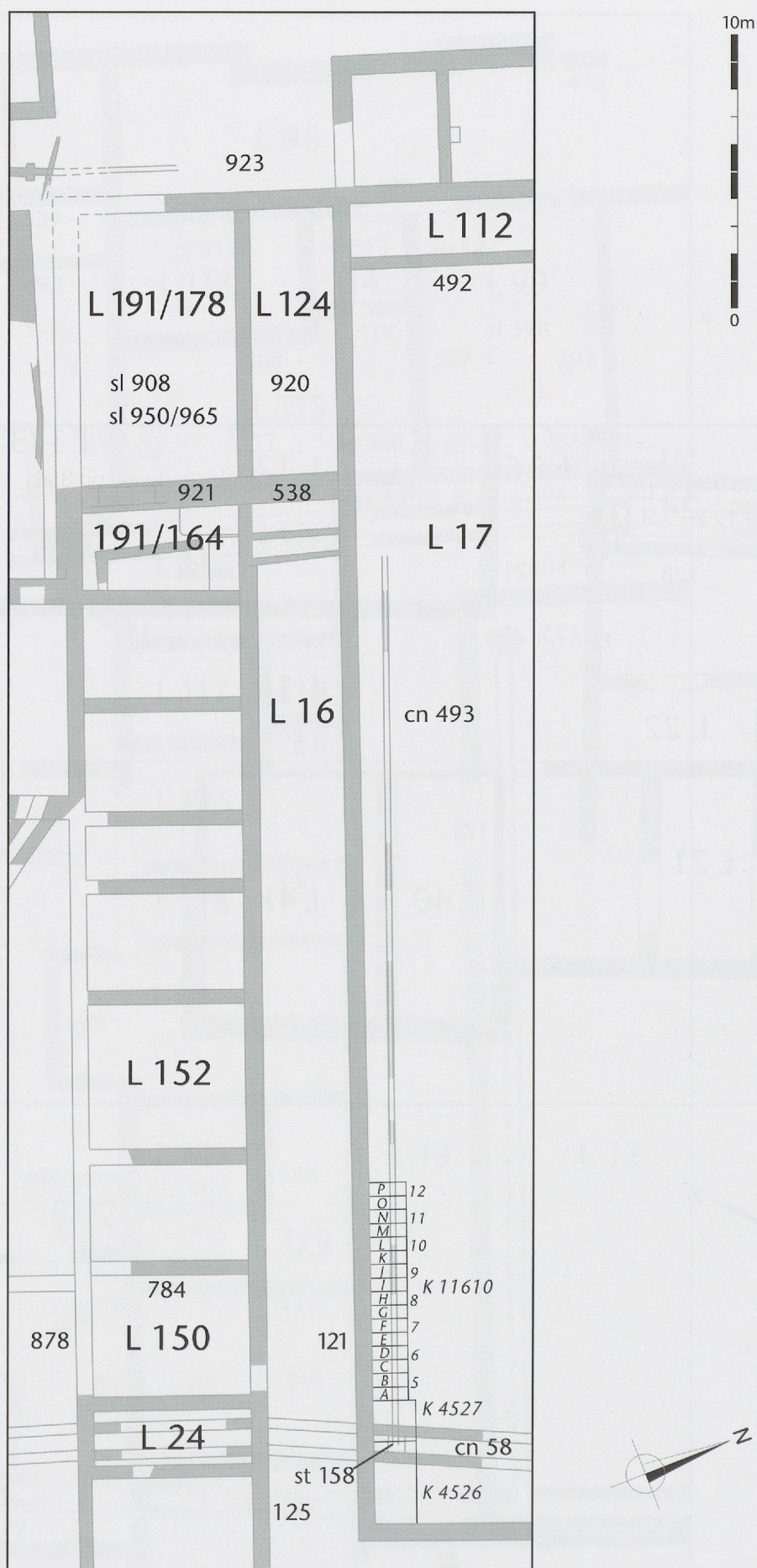
Planche 11 B4, aile sud; locaux, murs et structures.





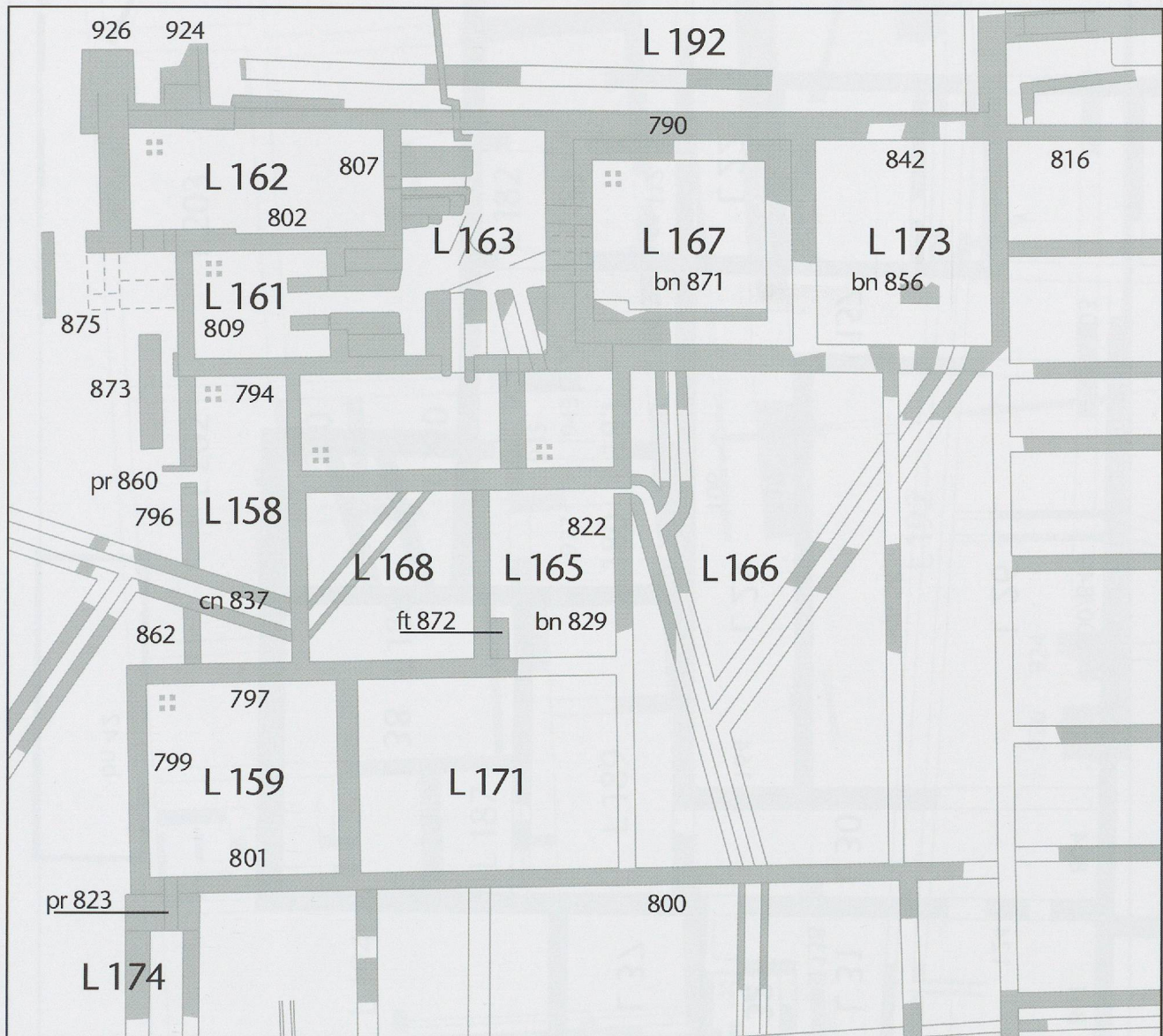
0 10m





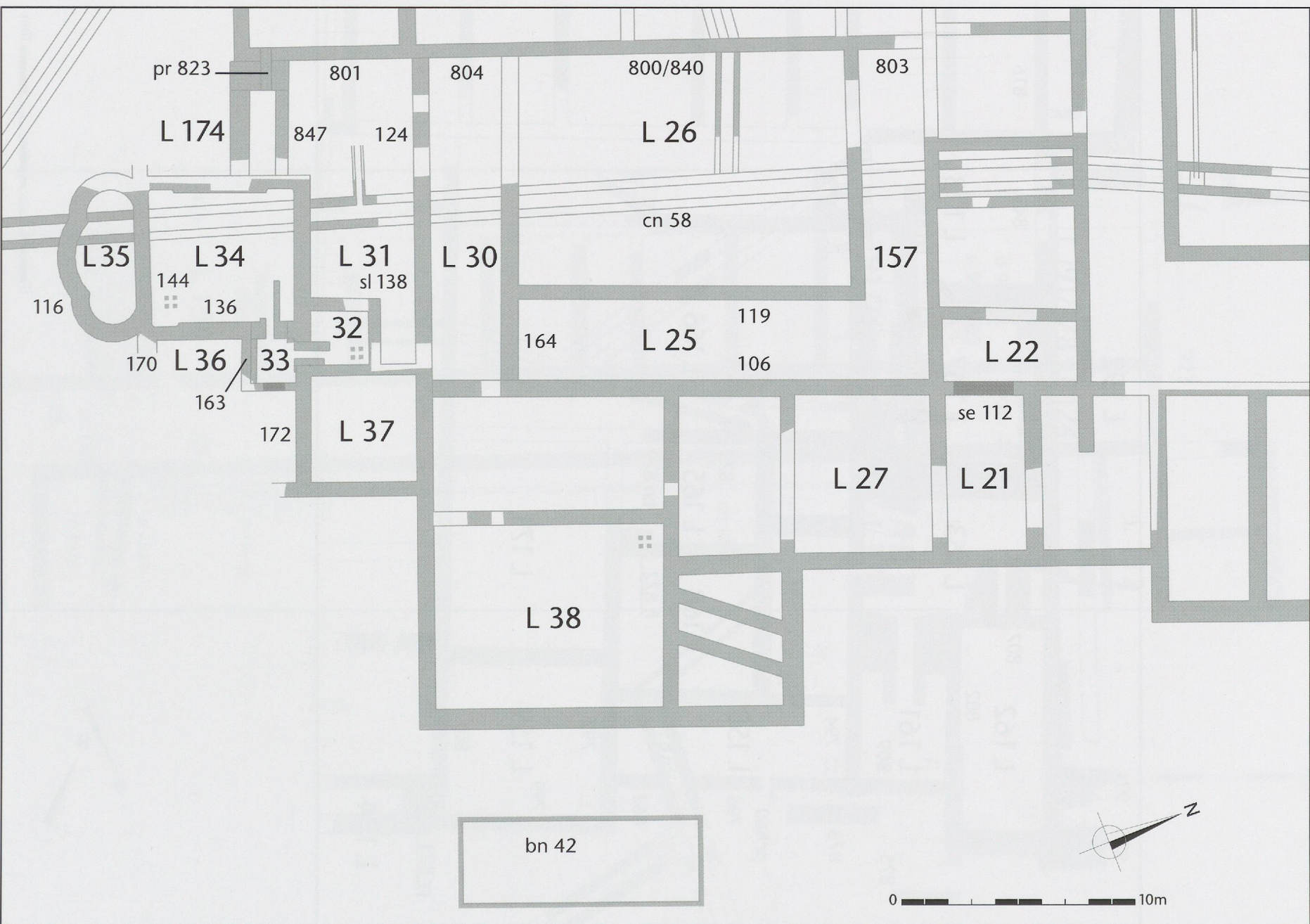
**Planche 13** B4, aile nord; locaux, murs et structures; situation des prélèvements.





**Planche 14** B1, grand balneum; locaux, murs et structures.

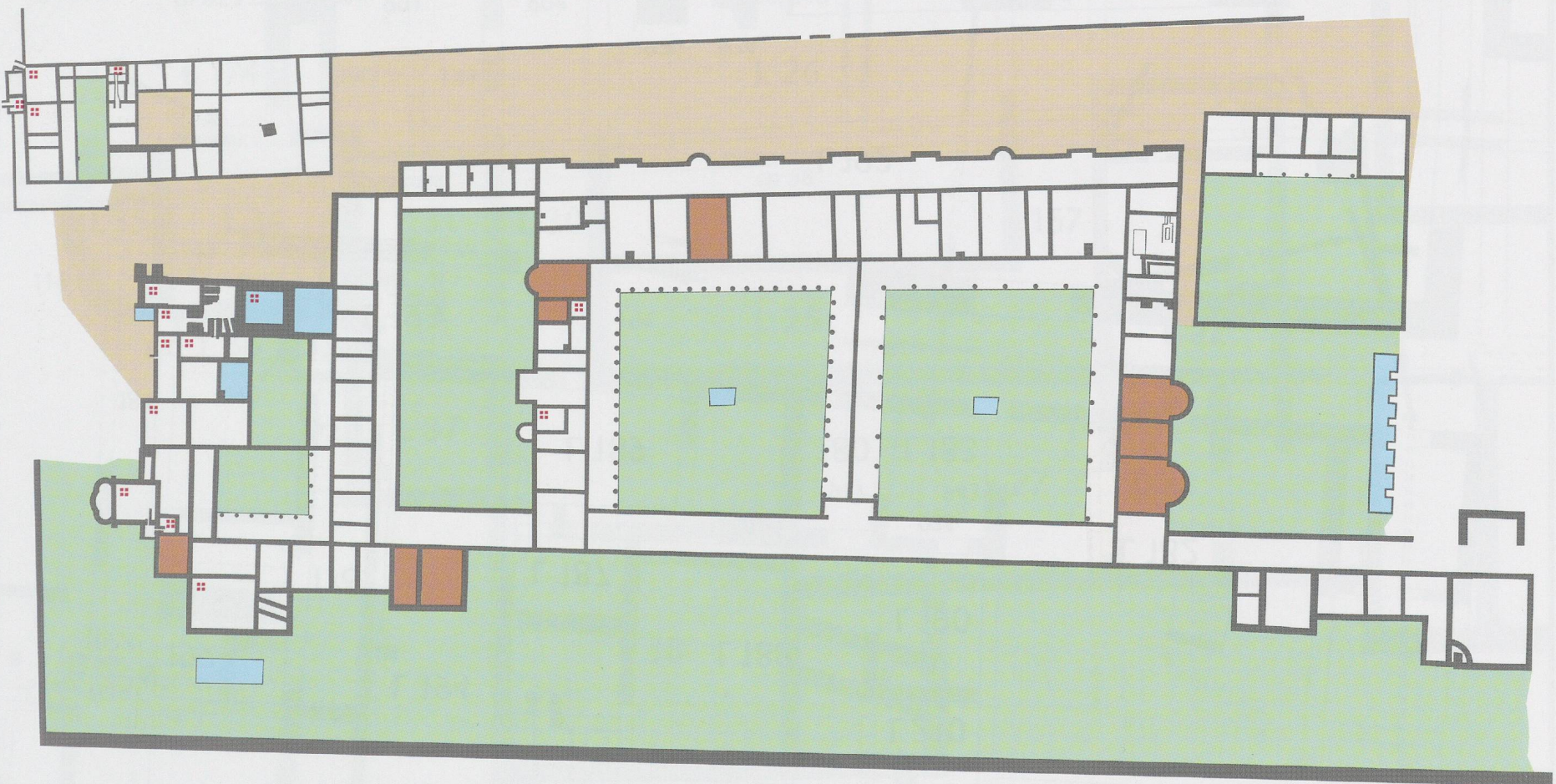




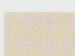






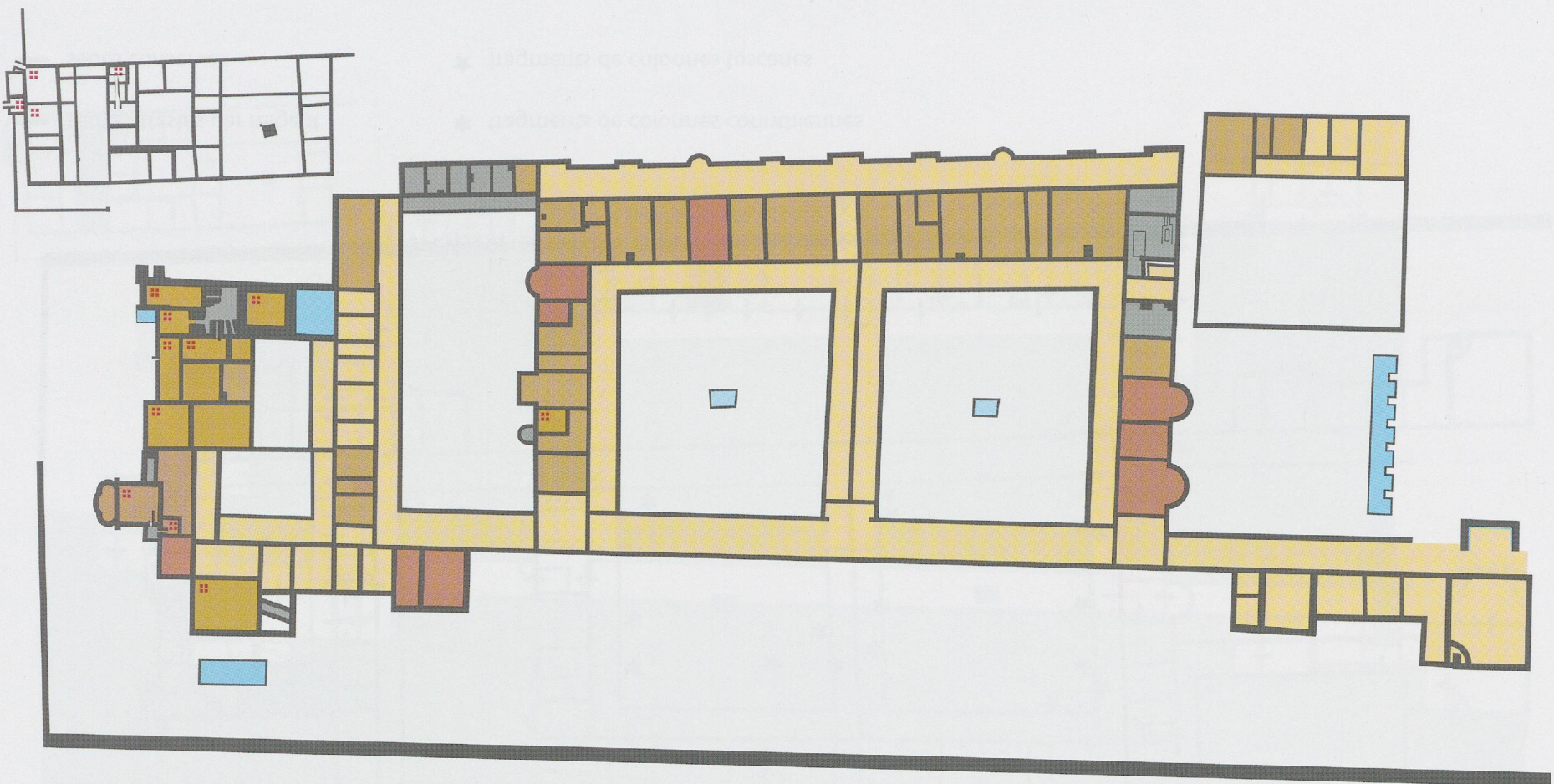













- |   |   |   |             |
|---|---|---|-------------|
|  | jardins et palestres  |  | bassins     |
|  | cours de service  |  | mosaïques   |
|   |  |   | hypocaustes |





- |   |           |   |  |
|---|-----------|---|--|
|  | mosaïques |  | <i>suspensurae</i> et sols du grand <i>balneum</i>   |
|  | terrazzi  |  | <i>opus signinum</i> et sols du petit <i>balneum</i> |
|  | dallages  |  | sols de terre battue                                 |
|   |           |  | hypocaustes  |





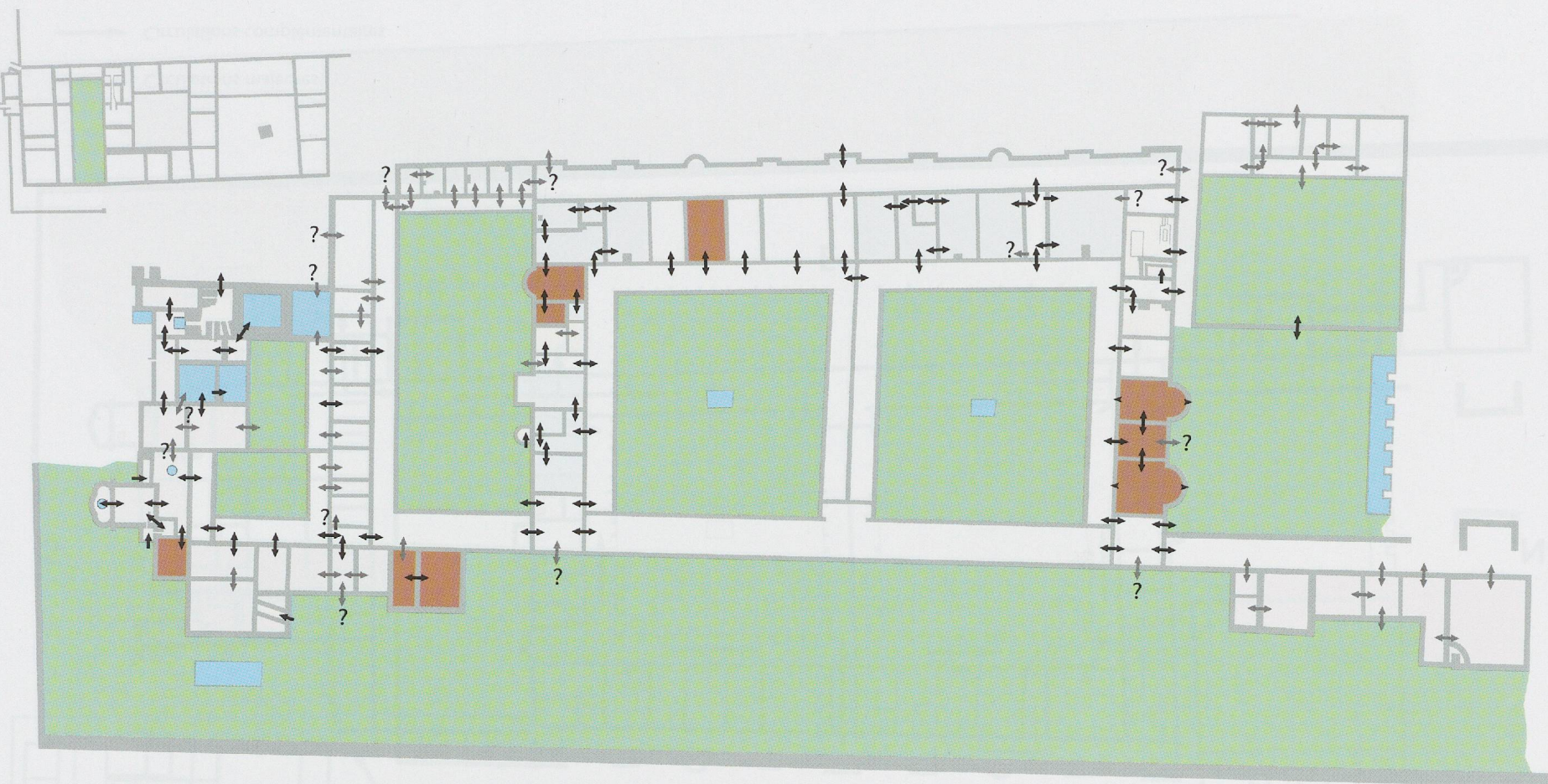
— seuels attestés par négatif

\* fragments de colonnes corinthiennes

— seuels conservés

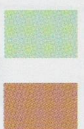
★ fragments de colonnes toscanes





↔ accès conservés ou logiques

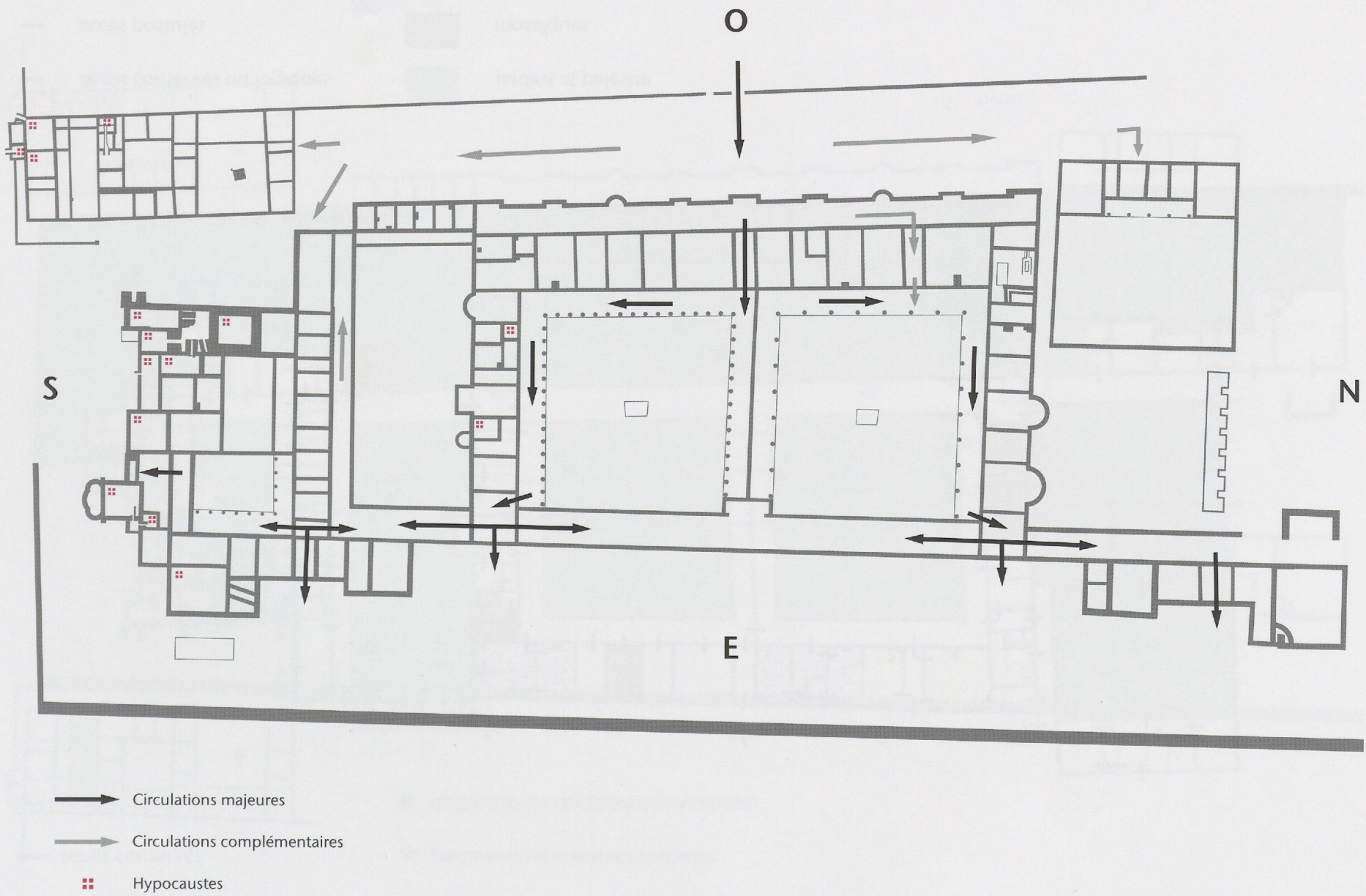
↔ accès postulés



jardins et palaestre

mosaïques









- |  |   |   |
|--|---|---|
| <span style="display: inline-block; width: 20px; height: 15px; background-color: red; border: 1px solid black;"></span> pavillons saillants        | <span style="display: inline-block; width: 20px; height: 15px; background-color: yellow; border: 1px solid black;"></span> locaux de service (cuisines, latrines, <i>praefurnia</i> ) | <span style="display: inline-block; width: 10px; height: 10px; background-color: red; border: 1px solid black;"></span> hypocaustes |
| <span style="display: inline-block; width: 20px; height: 15px; background-color: orange; border: 1px solid black;"></span> petit <i>balneum</i>    | <span style="display: inline-block; width: 20px; height: 15px; background-color: green; border: 1px solid black;"></span> pièces de réception ( <i>triclinia</i> , <i>oeci</i> etc.)  |   |
| <span style="display: inline-block; width: 20px; height: 15px; background-color: lightblue; border: 1px solid black;"></span> grand <i>balneum</i> | <span style="display: inline-block; width: 20px; height: 15px; background-color: blue; border: 1px solid black;"></span> appartements privés  |   |



