

**Zeitschrift:** Cahiers d'archéologie romande  
**Herausgeber:** Bibliothèque Historique Vaudoise  
**Band:** 130 (2011)  
  
**Rubrik:** Planches : dessins du mobilier par inventaires des tombes : planches couleur

### **Nutzungsbedingungen**

Die ETH-Bibliothek ist die Anbieterin der digitalisierten Zeitschriften auf E-Periodica. Sie besitzt keine Urheberrechte an den Zeitschriften und ist nicht verantwortlich für deren Inhalte. Die Rechte liegen in der Regel bei den Herausgebern beziehungsweise den externen Rechteinhabern. Das Veröffentlichen von Bildern in Print- und Online-Publikationen sowie auf Social Media-Kanälen oder Webseiten ist nur mit vorheriger Genehmigung der Rechteinhaber erlaubt. [Mehr erfahren](#)

### **Conditions d'utilisation**

L'ETH Library est le fournisseur des revues numérisées. Elle ne détient aucun droit d'auteur sur les revues et n'est pas responsable de leur contenu. En règle générale, les droits sont détenus par les éditeurs ou les détenteurs de droits externes. La reproduction d'images dans des publications imprimées ou en ligne ainsi que sur des canaux de médias sociaux ou des sites web n'est autorisée qu'avec l'accord préalable des détenteurs des droits. [En savoir plus](#)

### **Terms of use**

The ETH Library is the provider of the digitised journals. It does not own any copyrights to the journals and is not responsible for their content. The rights usually lie with the publishers or the external rights holders. Publishing images in print and online publications, as well as on social media channels or websites, is only permitted with the prior consent of the rights holders. [Find out more](#)

**Download PDF:** 30.12.2025

**ETH-Bibliothek Zürich, E-Periodica, <https://www.e-periodica.ch>**

Planches 1-32 :

## DESSINS DU MOBILIER PAR INVENTAIRES DES TOMBES

*Dessins : Max Klausener, MHA VD*

*Montage : Eric Soutter, Archeodunum SA*

Planches I-VIII :

## PLANCHES COULEUR

*Photos : Fibbi-Aeppli, Grandson*



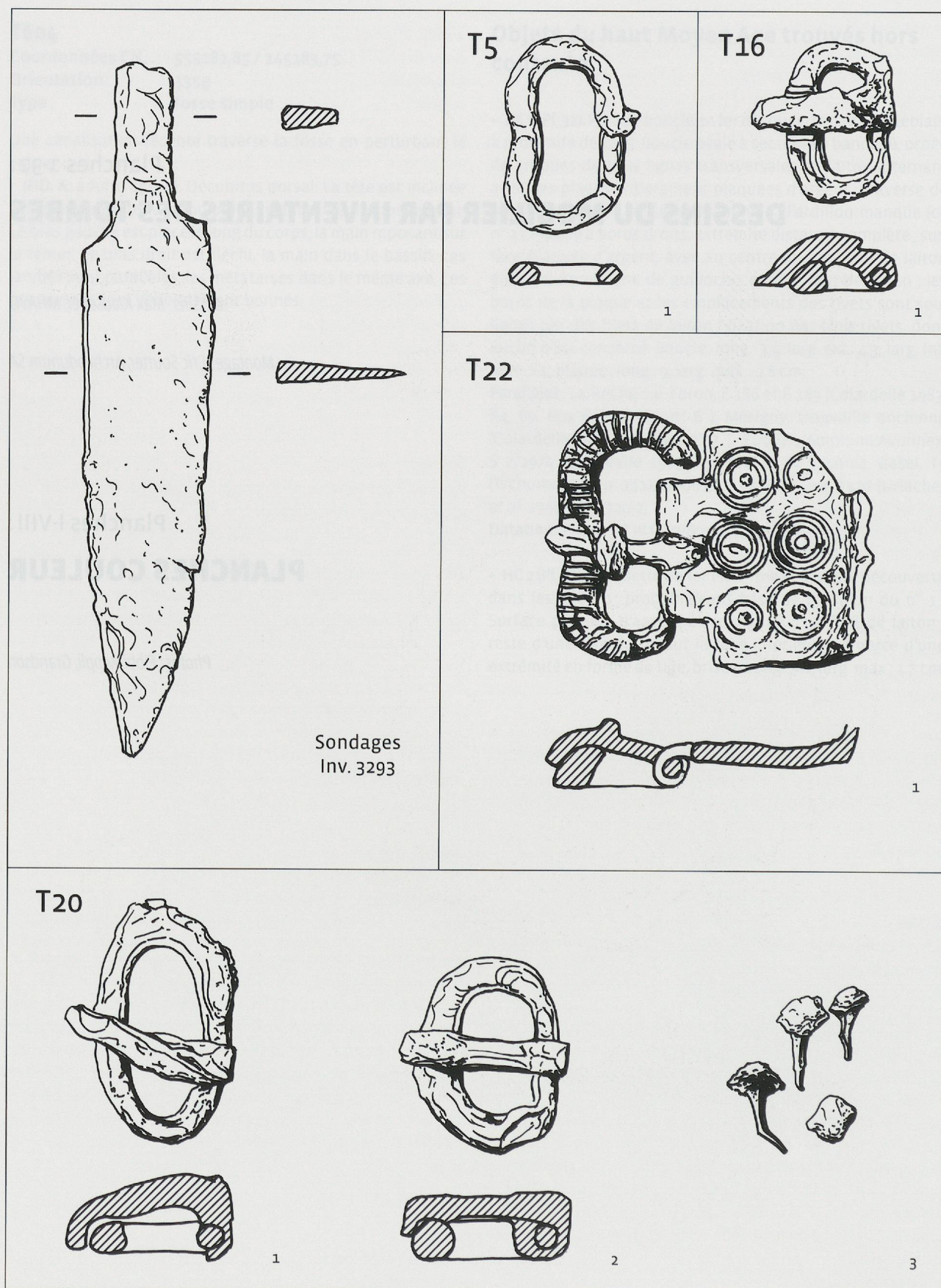


PLANCHE 1 - La Tour-de-Peilz, Clos d'Aubonne. Inv. 3293, T5-1, T20-1 à 3 : fer. T16-1: fer damasquiné d'argent. T22-1: fer damasquiné de laiton et de cuivre. Ech. 1:1.



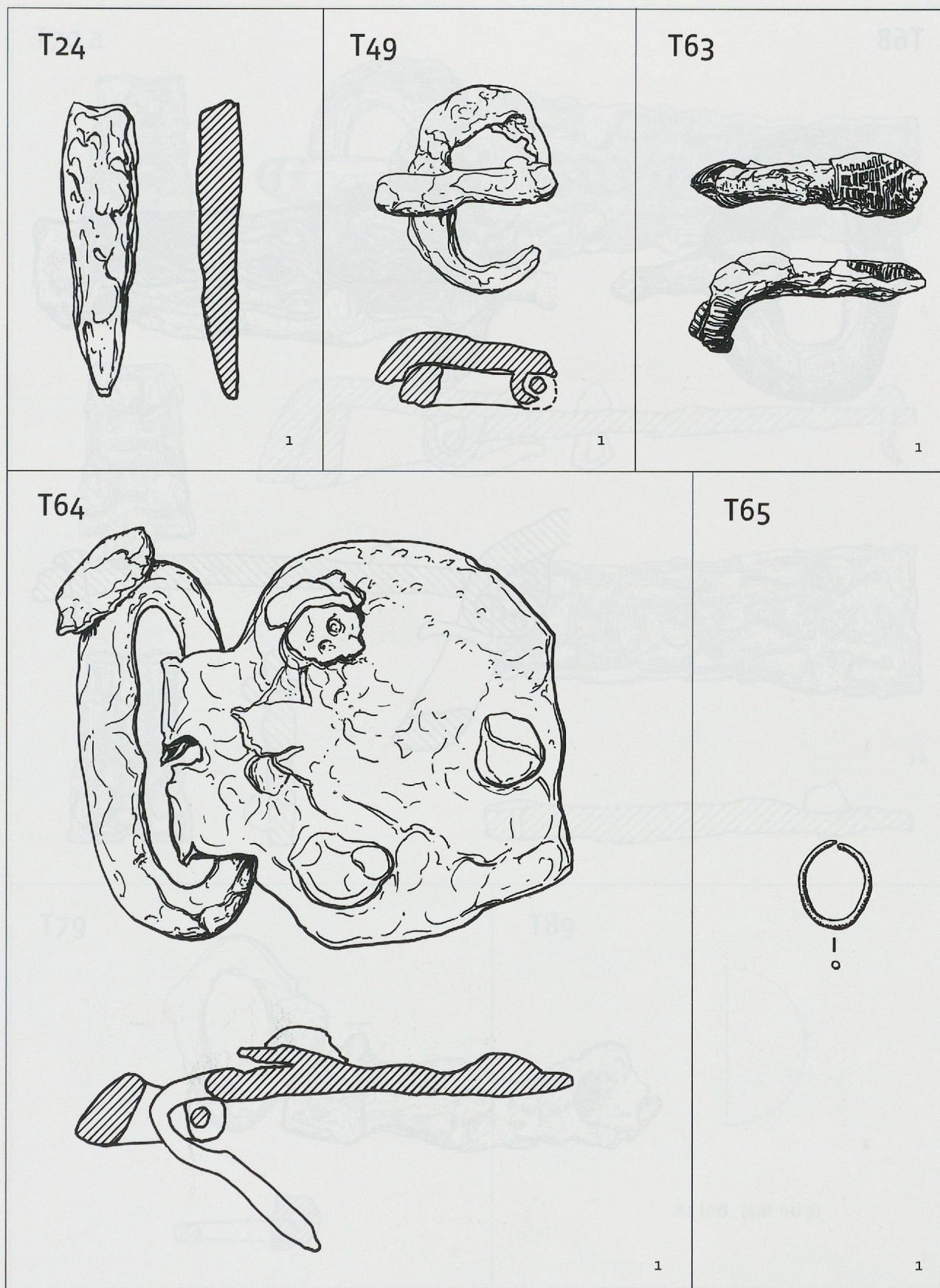
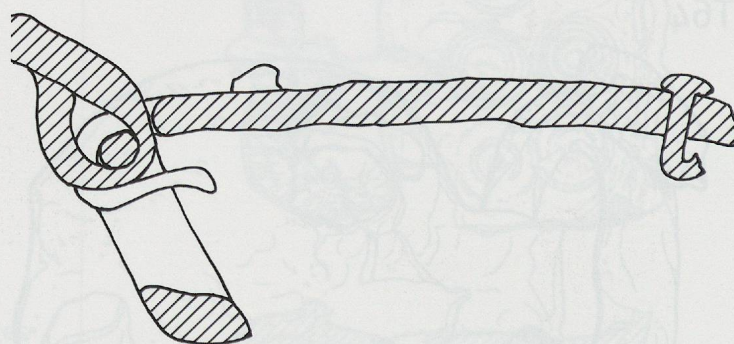
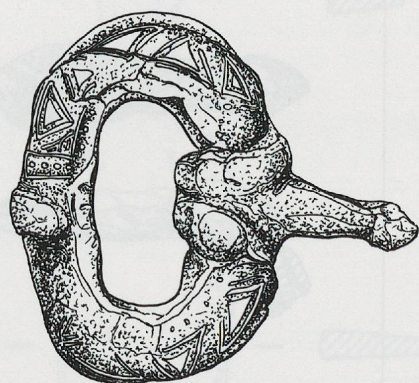


PLANCHE 2 - La Tour-de-Peilz, Clos d'Aubonne. T24-1, T49-1, T64-1 : fer. T63-1: fer damasquiné d'argent. T65-1: argent. Ech. 1:1.



T68



1

2

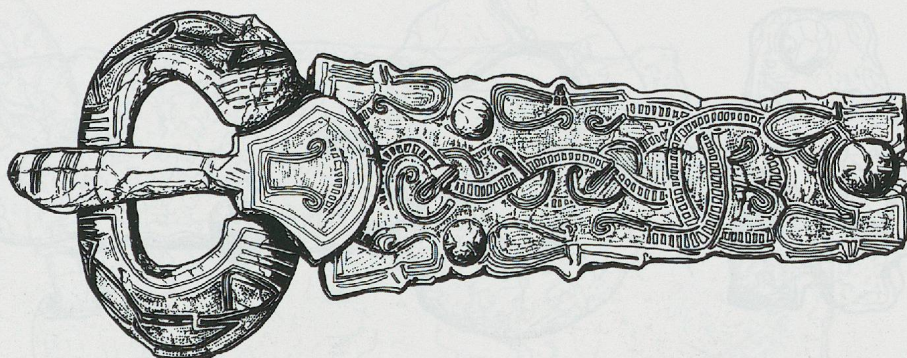




T70 a



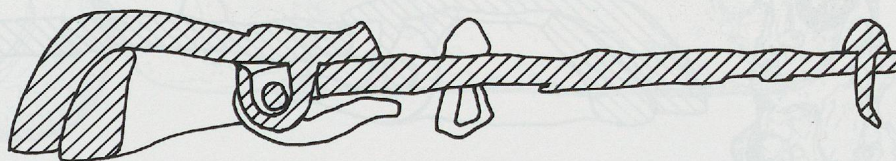
5



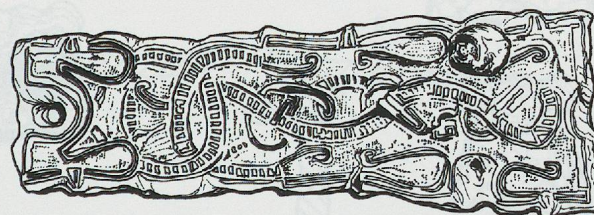
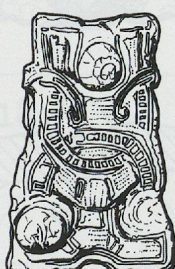
6



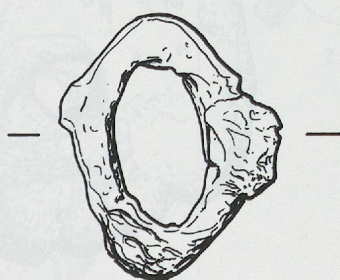
3 b



3 a

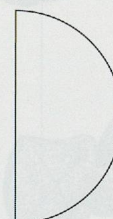


T79



1

T89



As ind. (cat no 3)

1

311

PLANCHE 4 - La Tour-de-Peilz, Clos d'Aubonne. T70a: fer damasquiné d'argent et de laiton. T79-1: fer. T89: bronze (cat. monnaies no 3). Ech. 1/1.



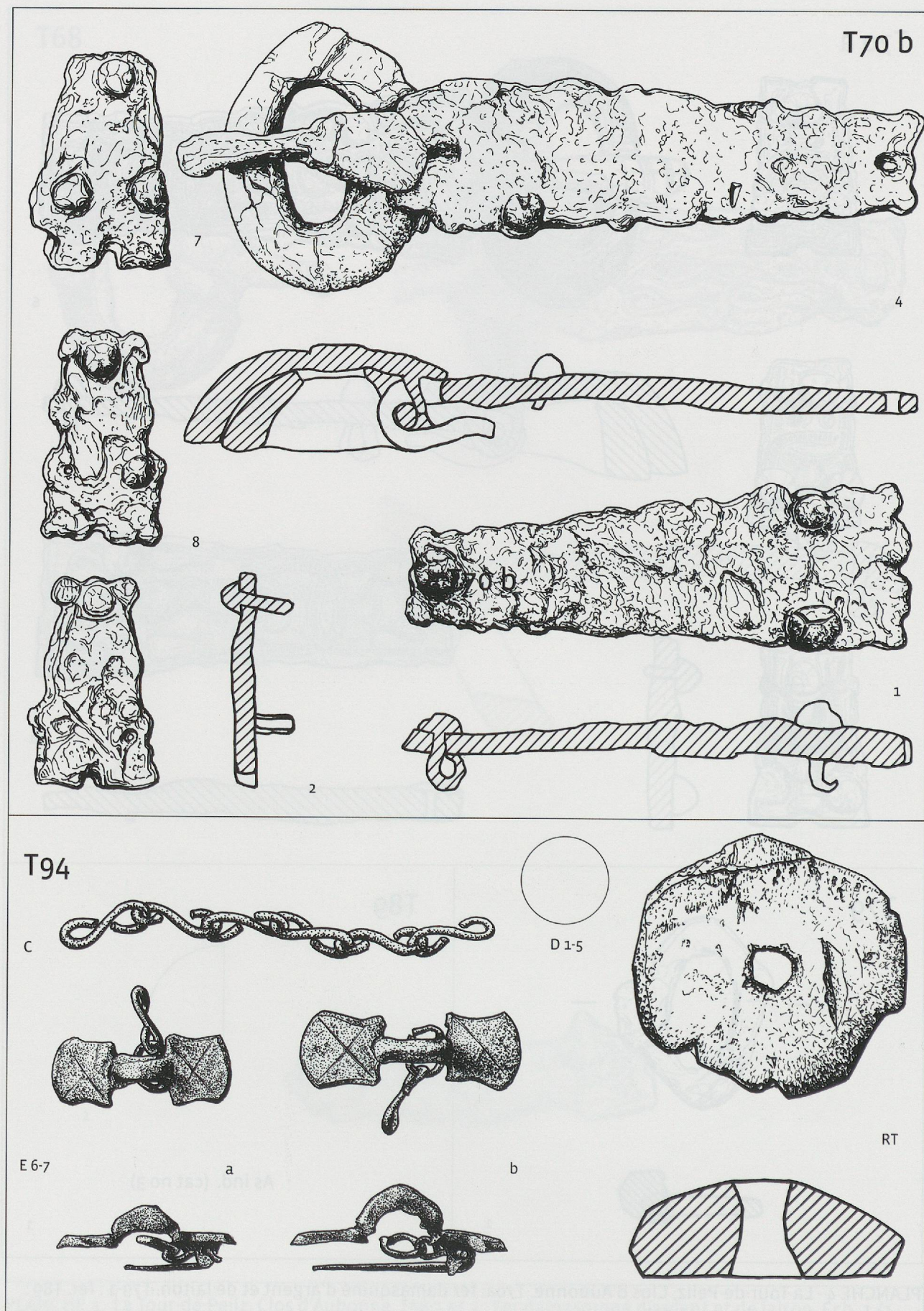
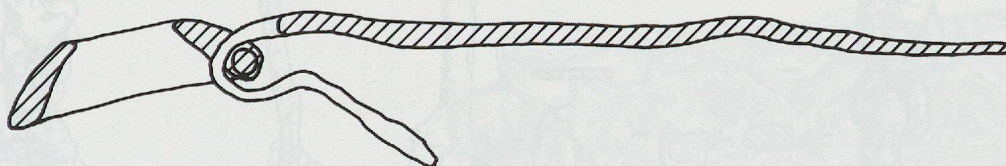
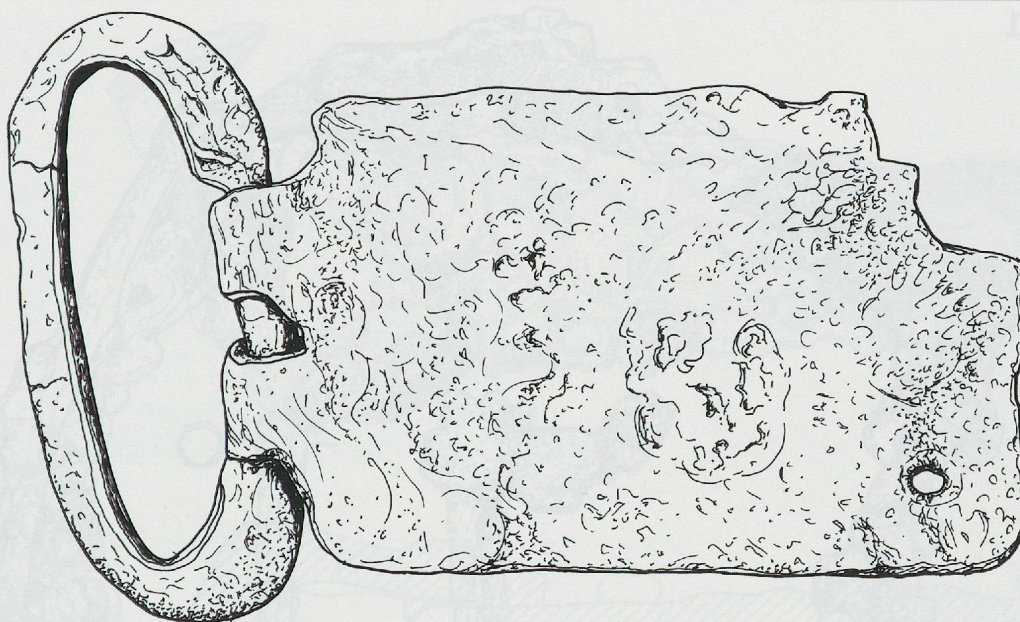


PLANCHE 5 - La Tour-de-Peilz, Clos d'Aubonne. T70b: fer. T94-1 à 5 : argent (cat. monnaies nos 18-22) ; T94-6 et 7 : bronze. T94 sans no : os. Ech. 1:1.

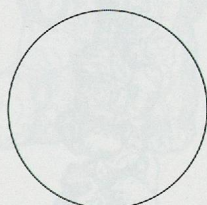


T108

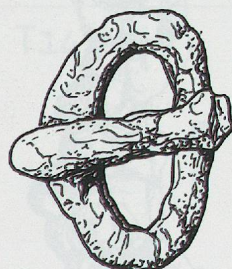


1

T118



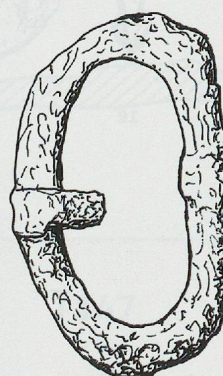
A-1



B-1



T24



1

T137



13



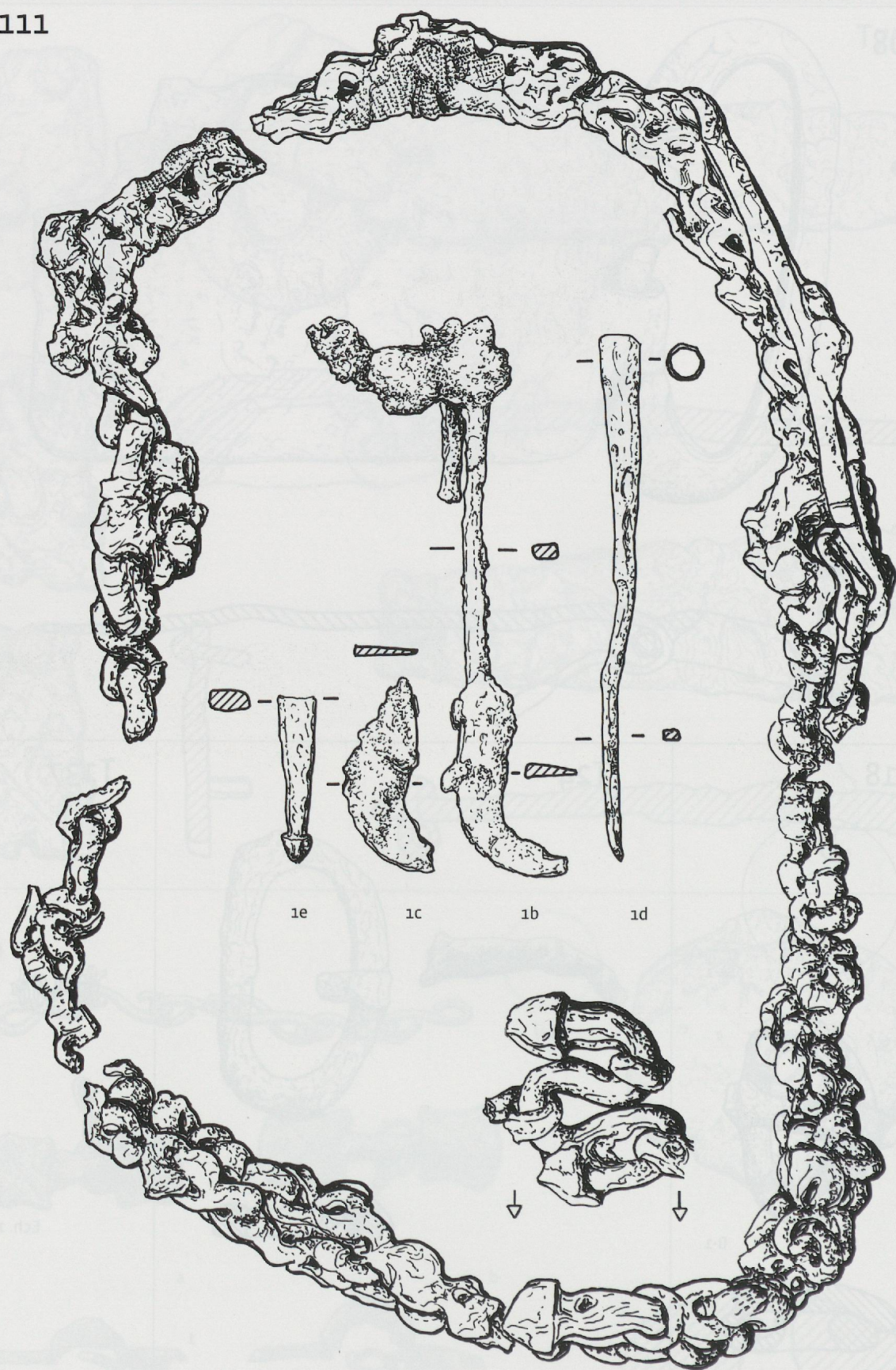
14

Ech. 1.5:1

PLANCHE 6 - La Tour-de-Peilz, Clos d'Aubonne. T108-1, T118B-1, T124-1 : fer. T118A-1 : argent (cat. monnaies no 23). T137-13 : fils d'or. T137-14 : cristal de roche. Ech. 1:1; T137-13 et 14 : 1.5:1.

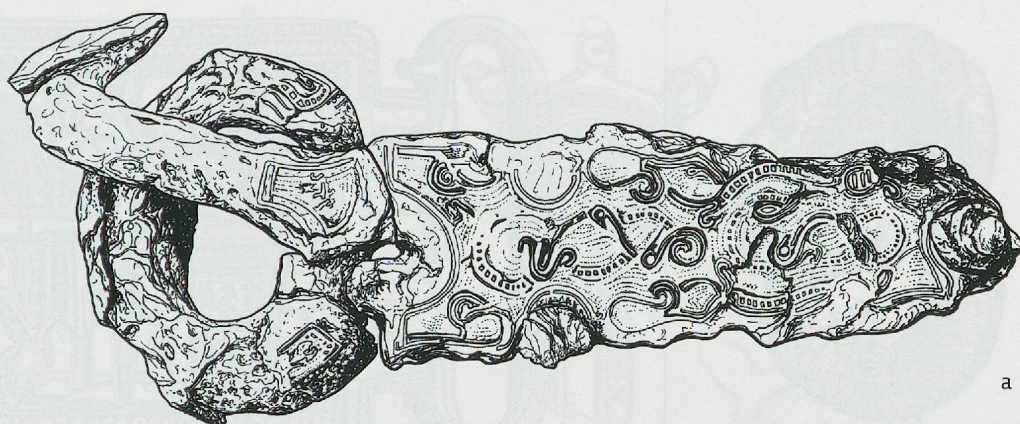


T111

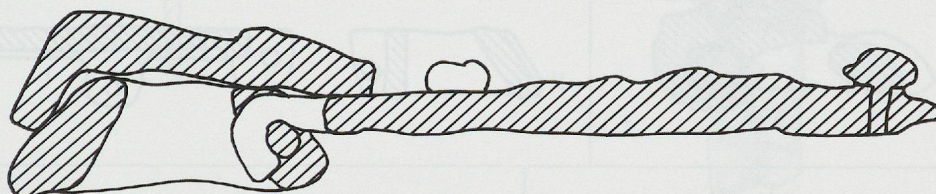




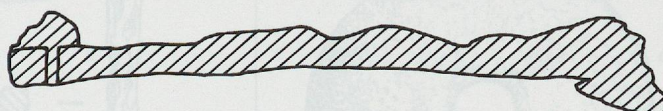
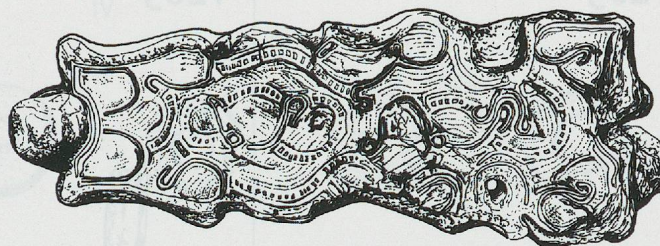
T139



a

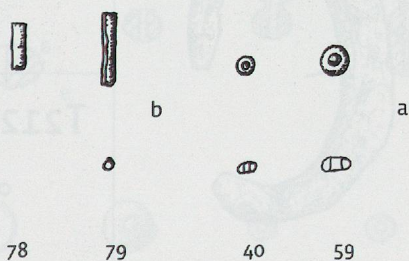


c



b

T143



78

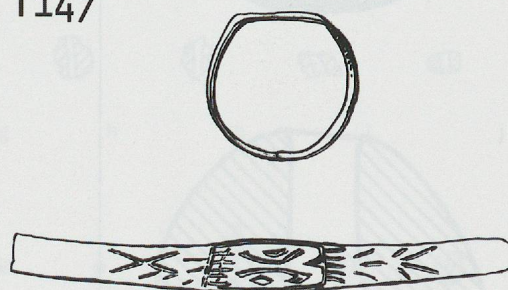
79

40

59

Ech. 1.5 : 1

T147

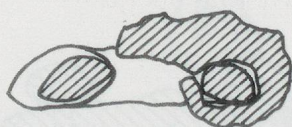
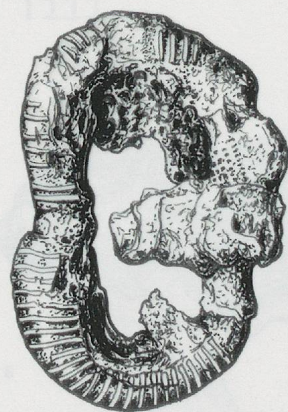


1

PLANCHE 8 - La Tour-de-Peilz, Clos d'Aubonne. T139 : fer damasquiné d'argent et de laiton. T143a : verre ; T143b : or. T147-1 : bronze. Ech. 1:1 ; T143 1.5:1.

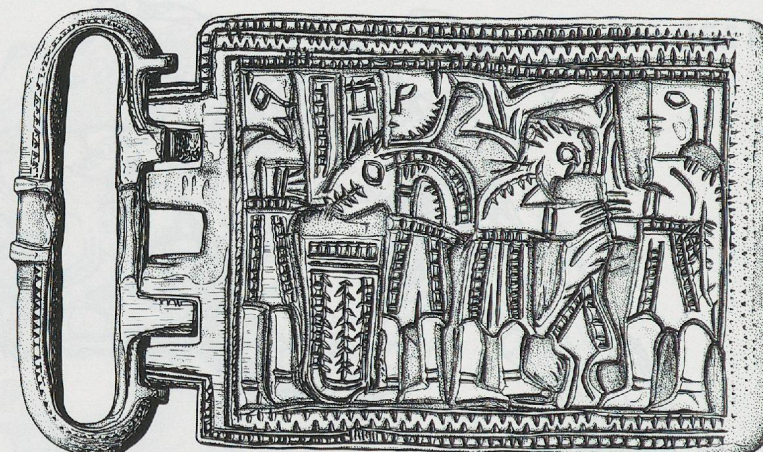


T161



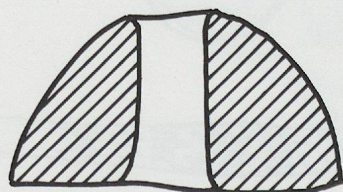
1

T167



1

T165

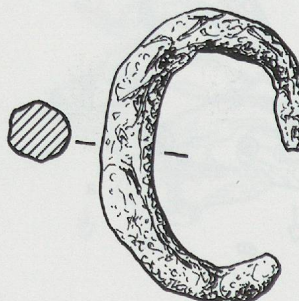


1

T205

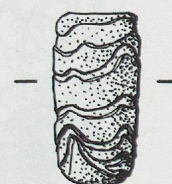


2



3

T192.1



1

T197.1

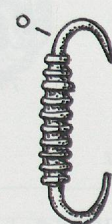


a



b

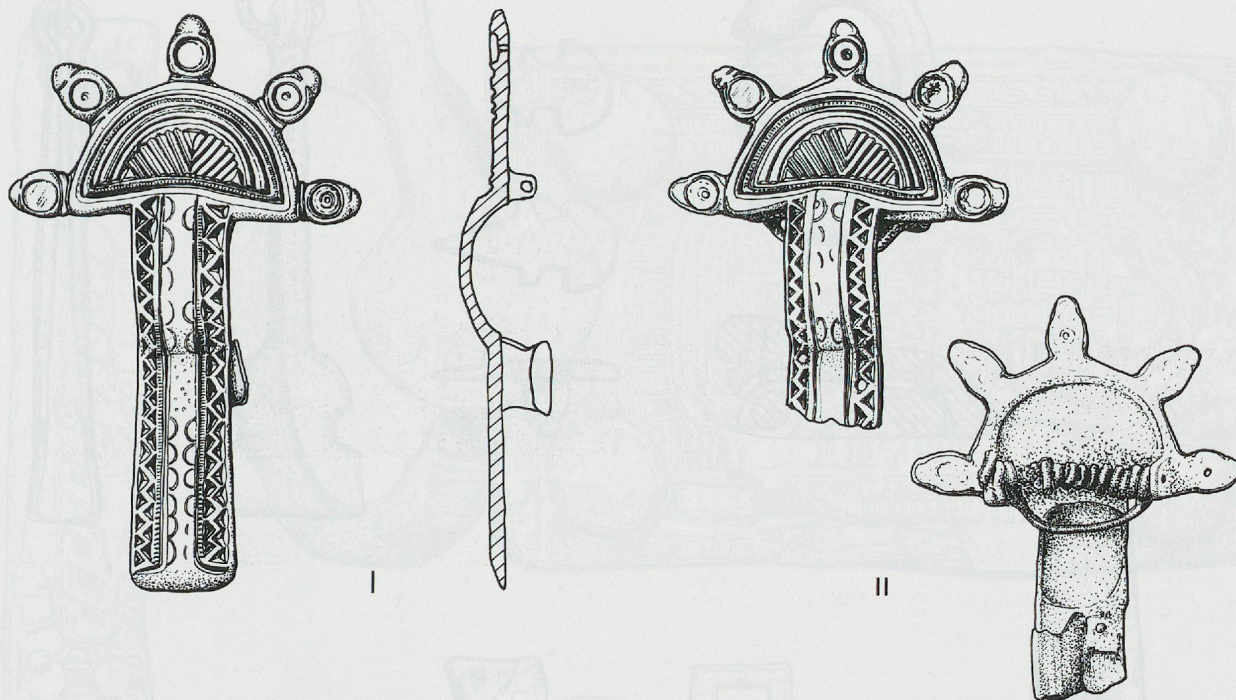
T212/T213



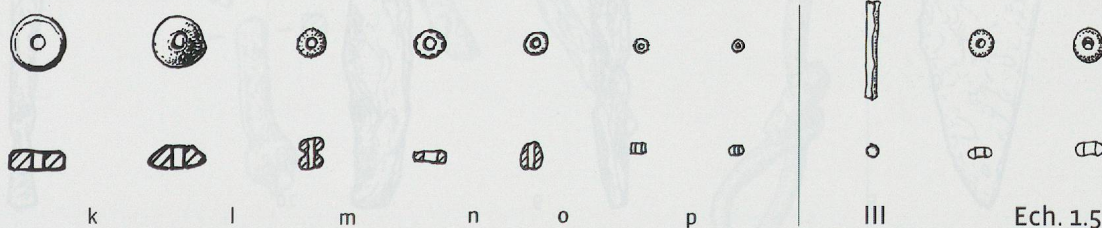
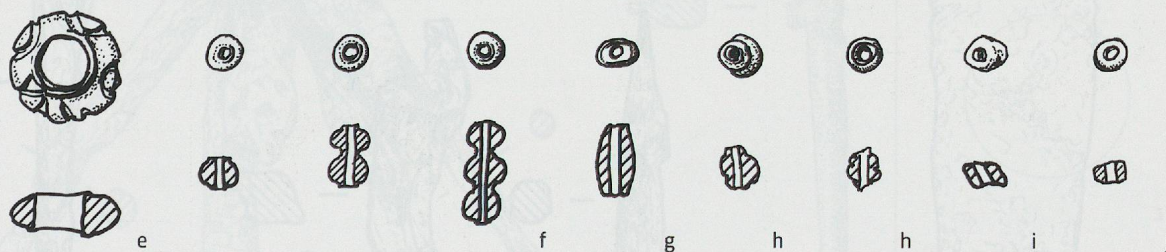
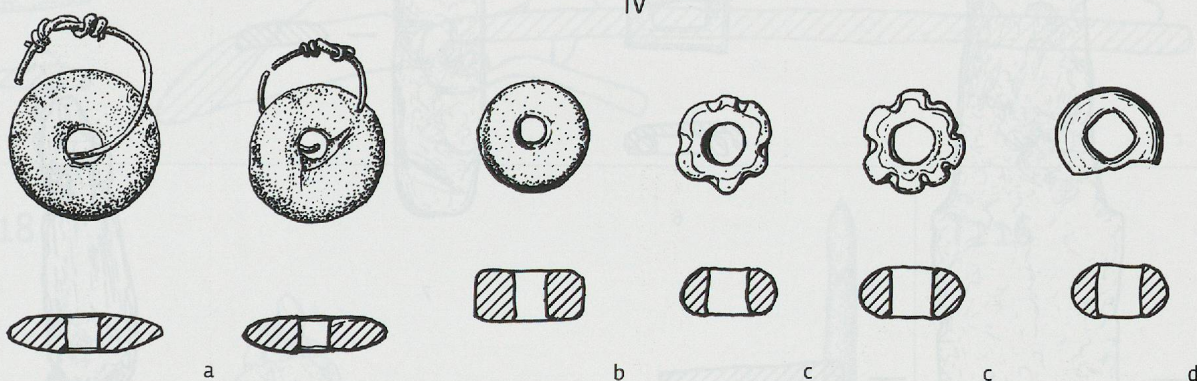
1



T170



IV

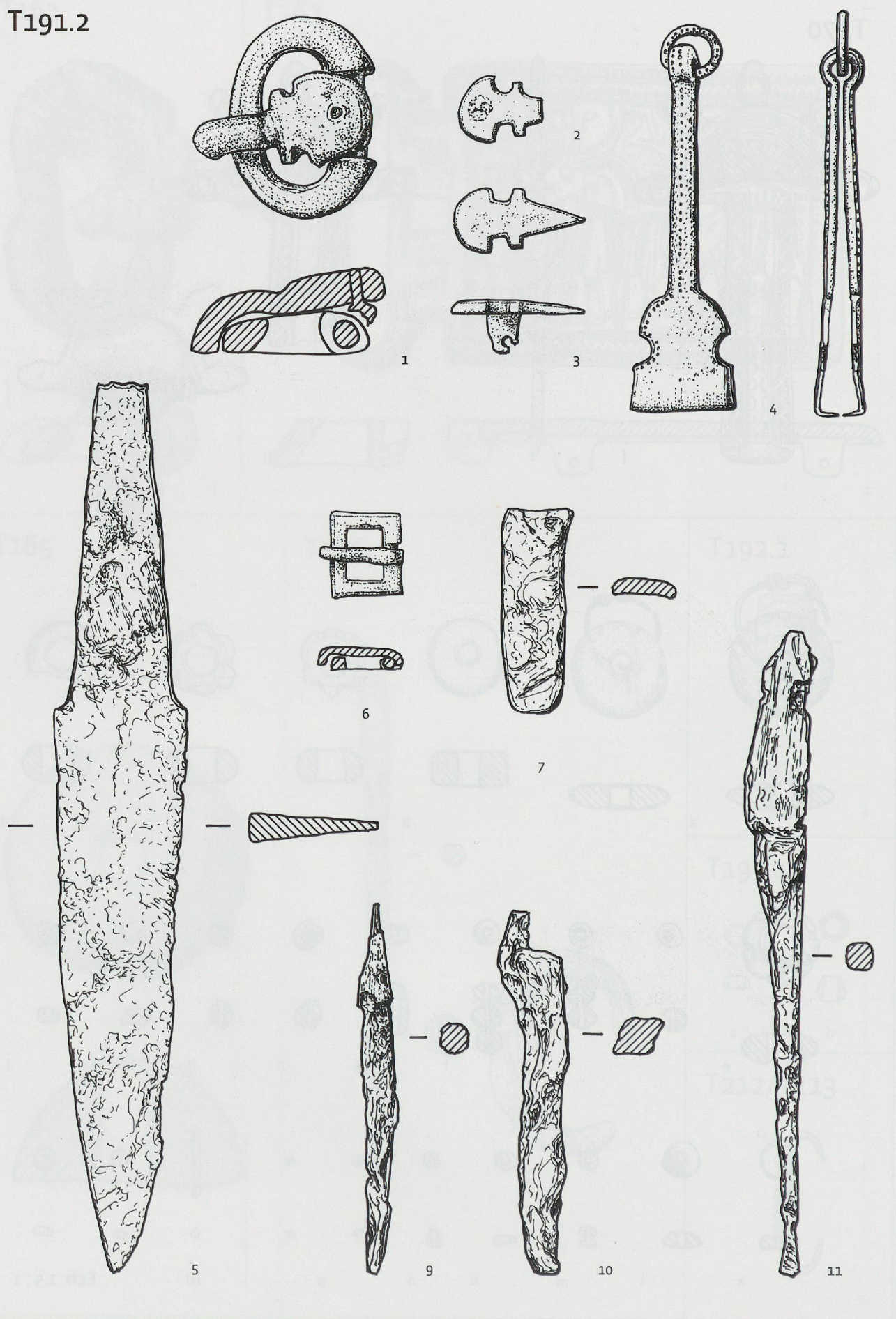


Ech. 1.5 : 1

PLANCHE 10 - La Tour-de-Peilz, Clos d'Aubonne. T170-I et II : argent doré et niellé, grenat. III : verre, or. IVa, b, g : ambre ; IVc à p : verre. Ech. 1:1, III : 1.5:1.

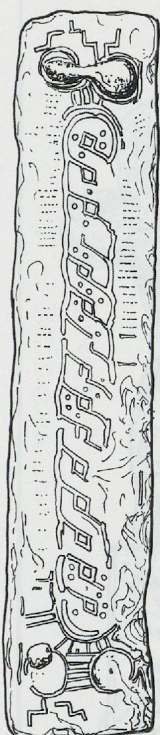


T191.2

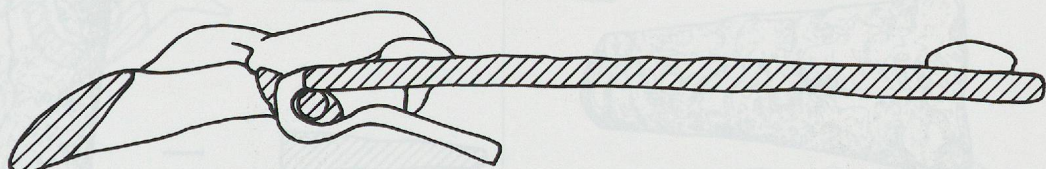
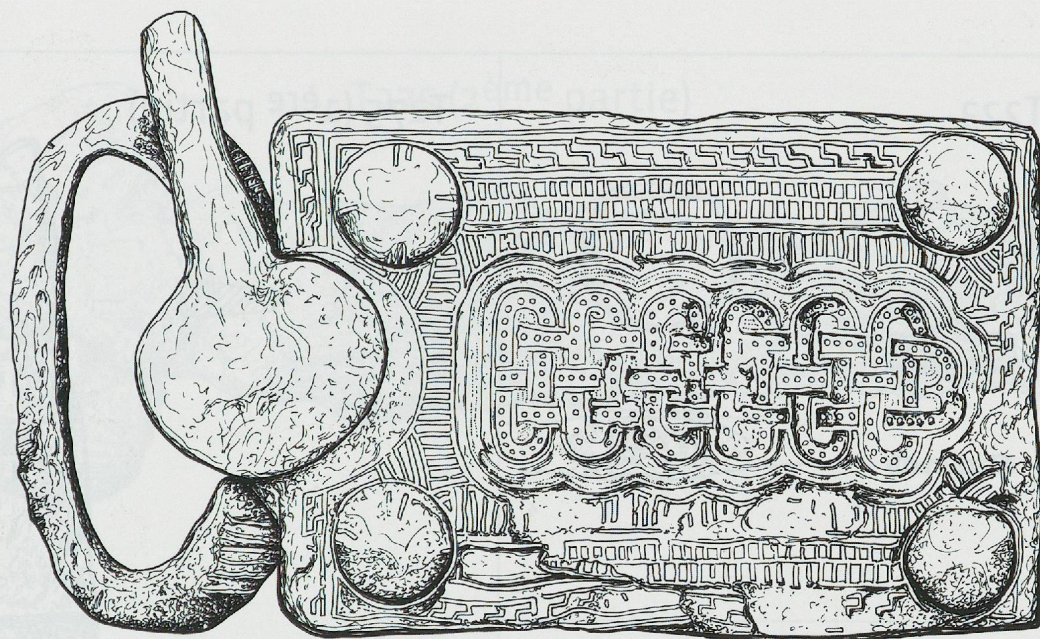




T217

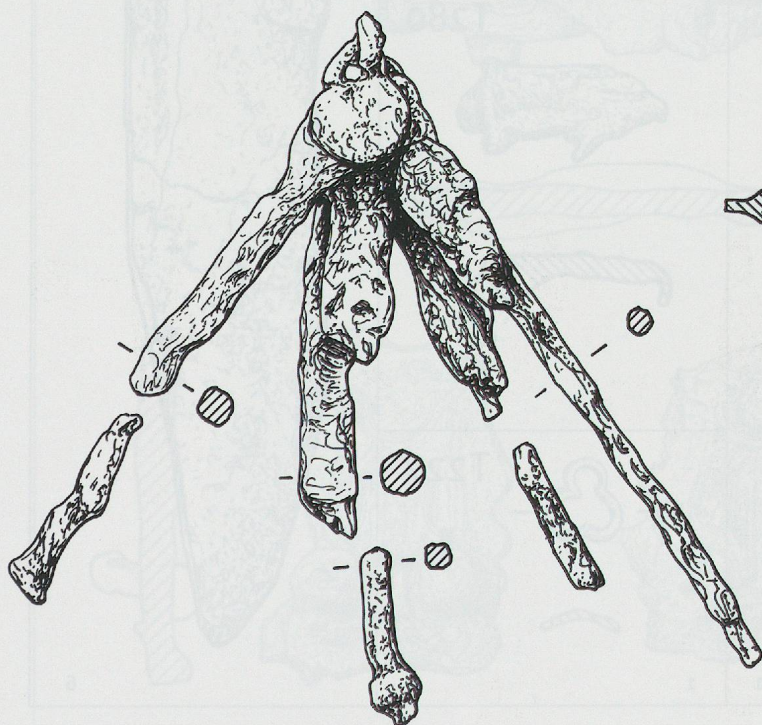


2



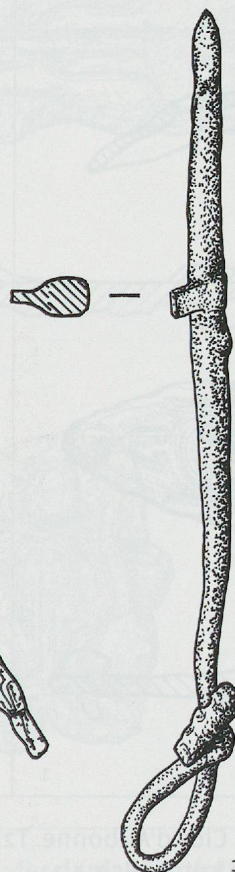
1

T218

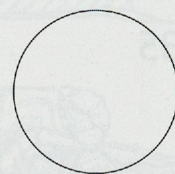


2

T216



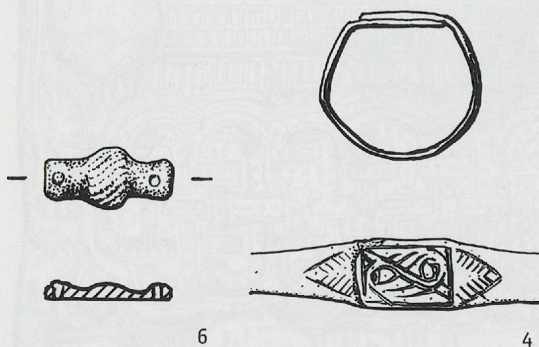
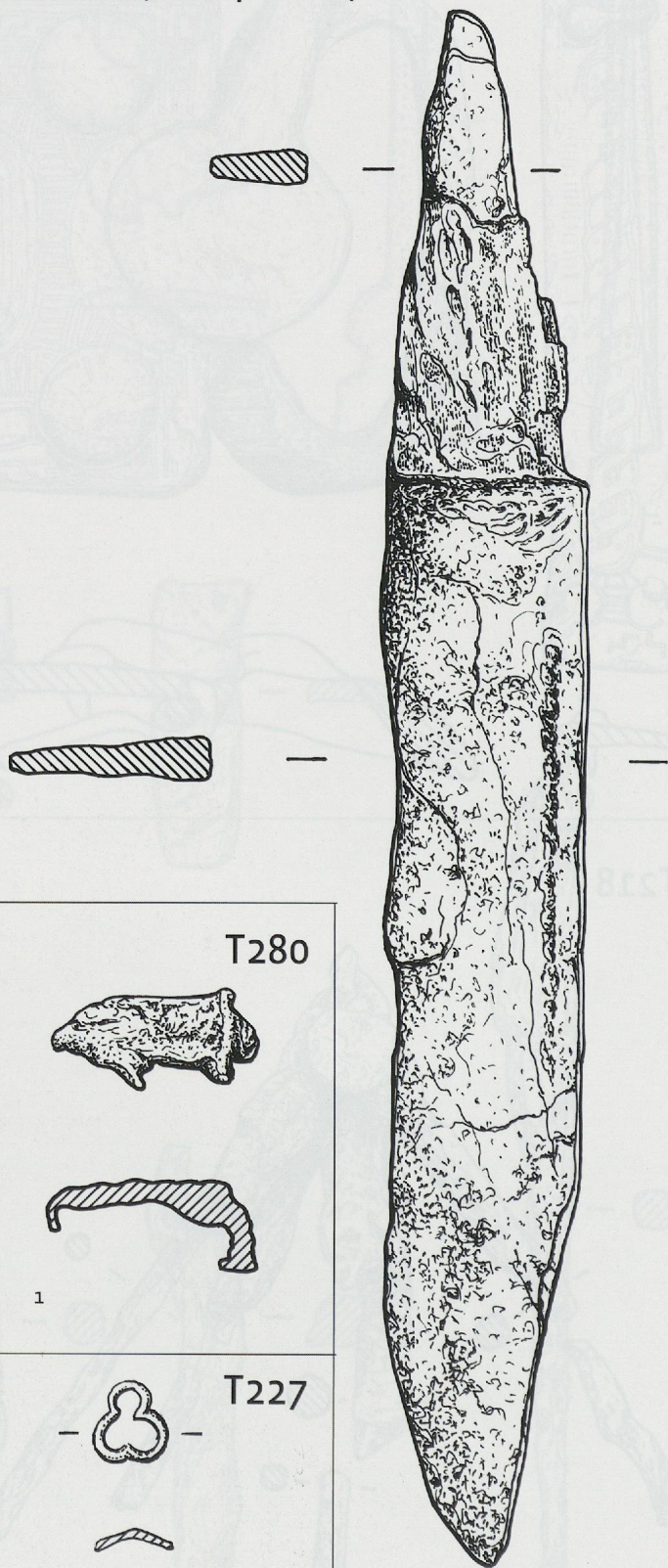
1



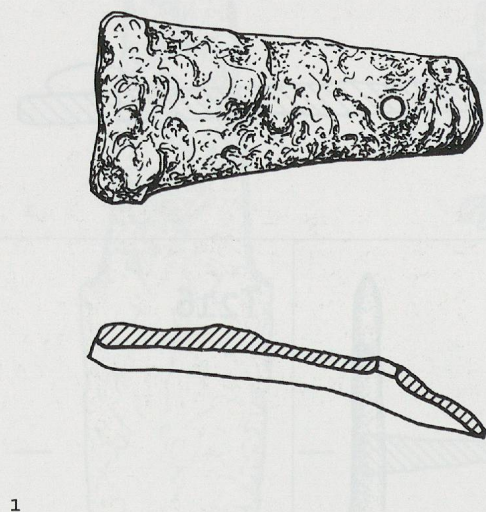
1



T223

T275 (1<sup>ère</sup> partie)

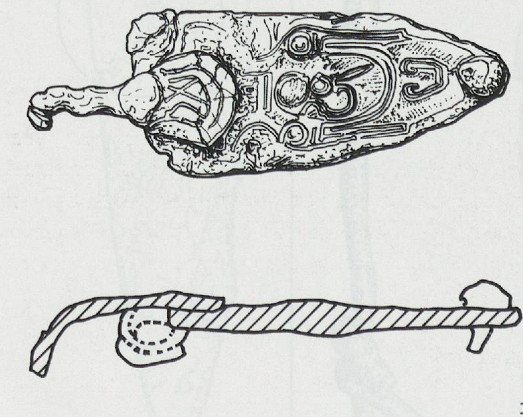
T276



T280



T235



T227

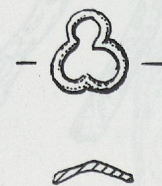
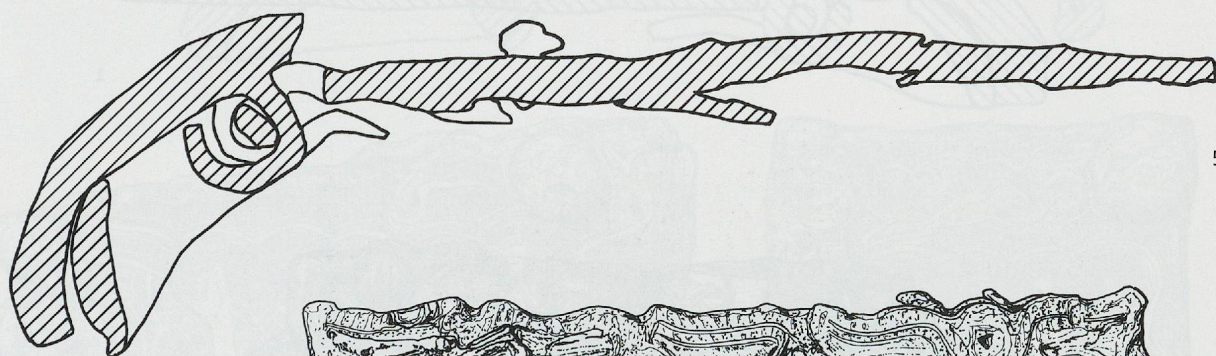
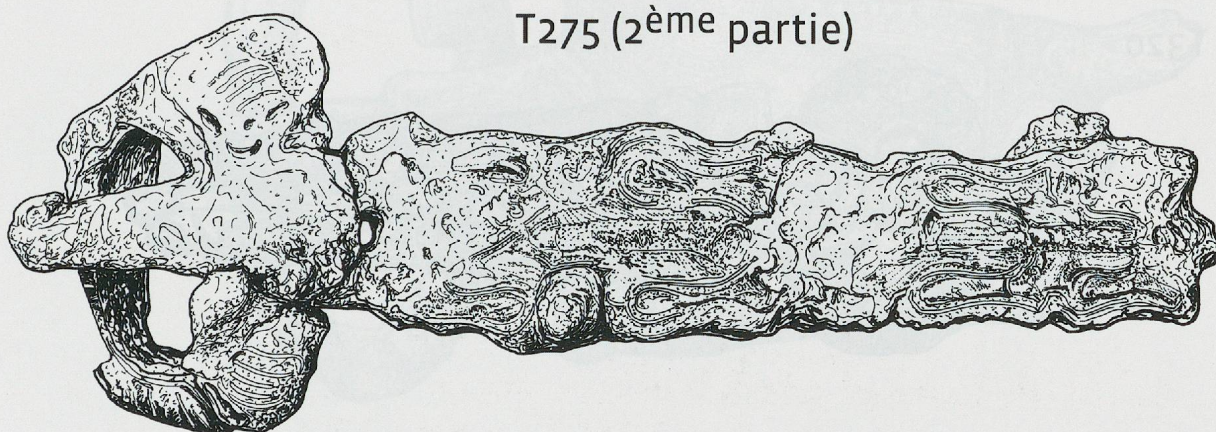


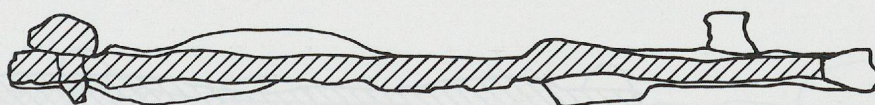
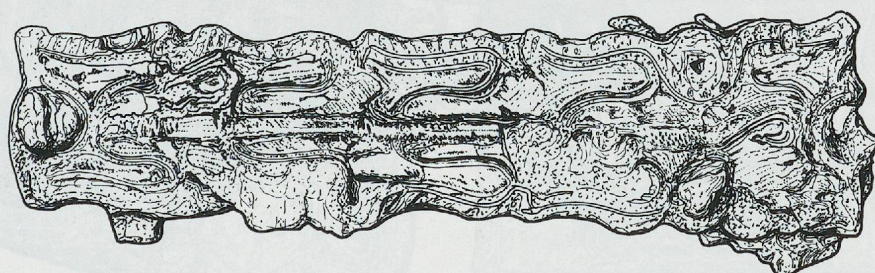
PLANCHE 13 - La Tour-de-Peilz, Clos d'Aubonne. T223-4 et 6, T227-1 : bronze. T280-1, T275-6, T276-1 : fer. T235-1 : fer damasquiné d'argent et de laiton. Ech. 1:1.



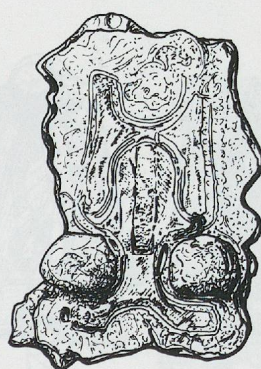
T275 (2<sup>ème</sup> partie)



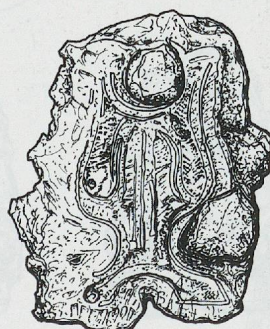
5



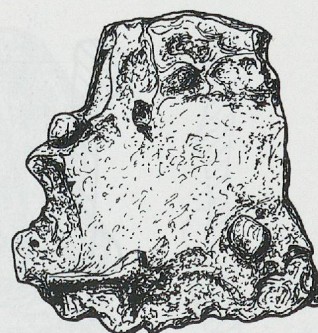
4



1



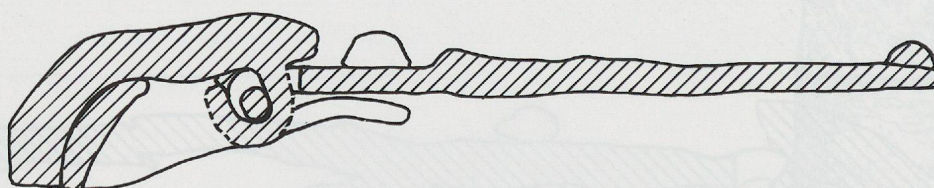
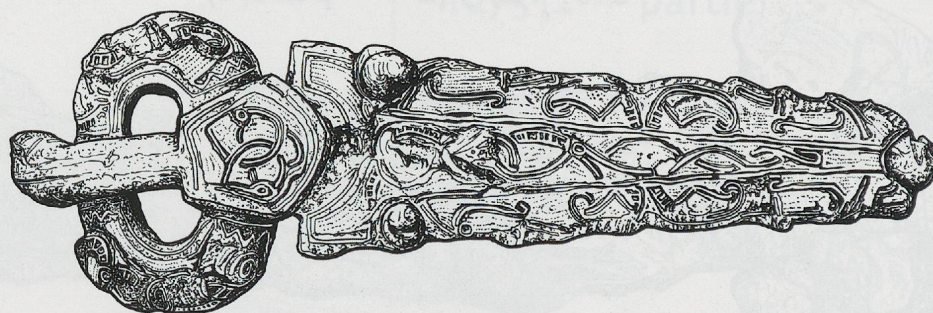
2



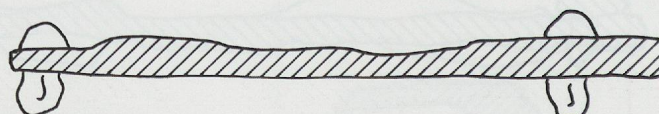
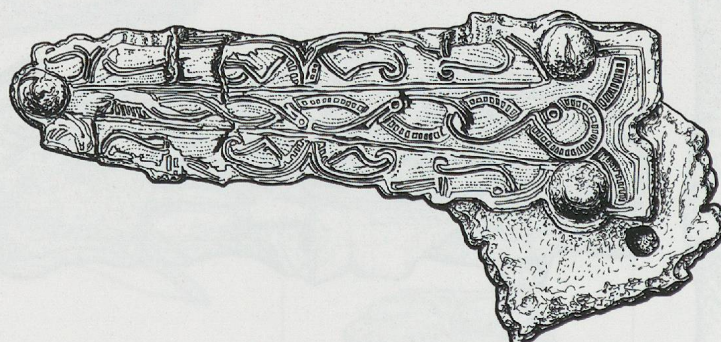
3



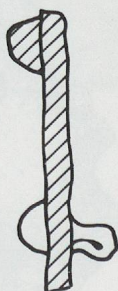
T320



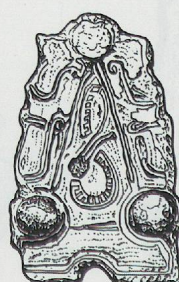
1



2



4



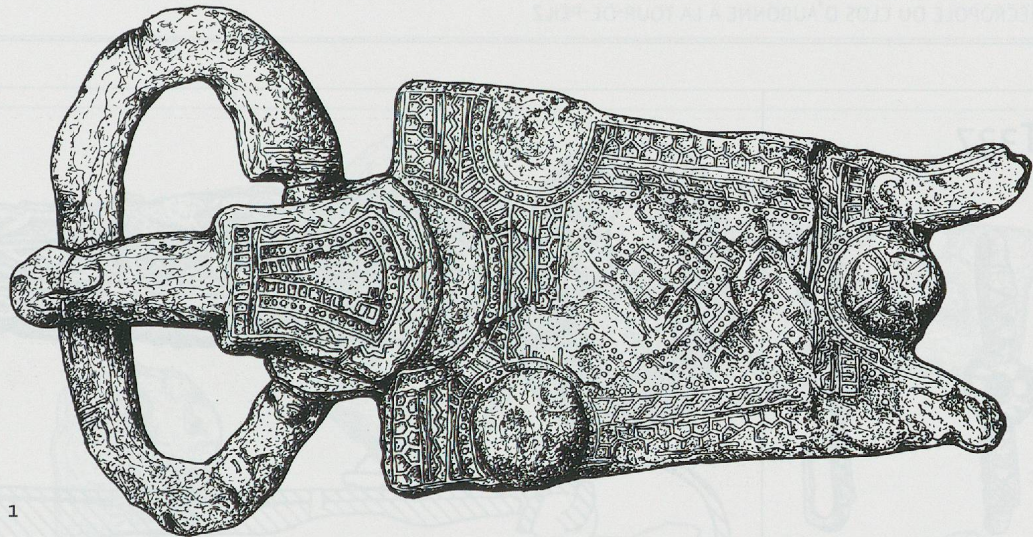
5



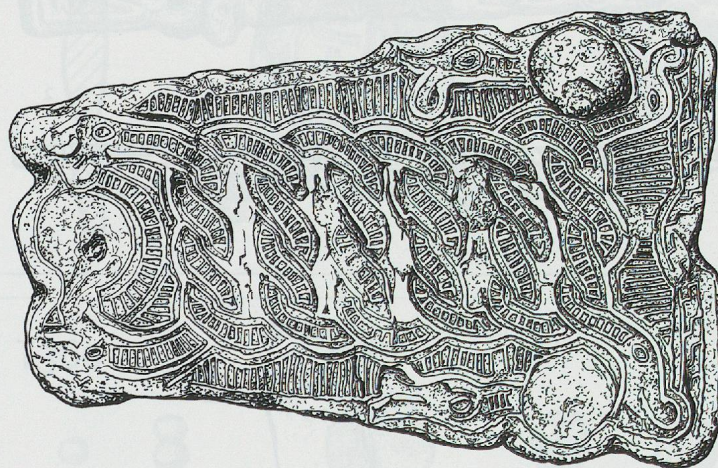
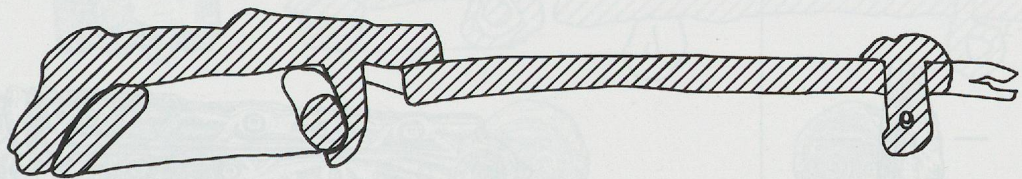
3



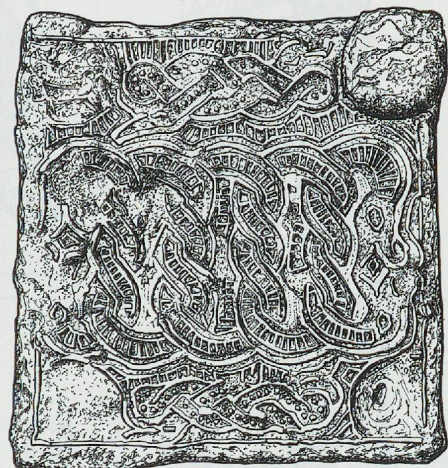
T332



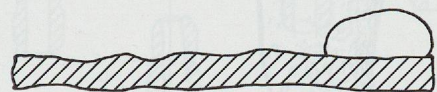
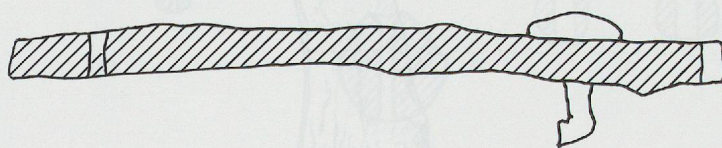
1



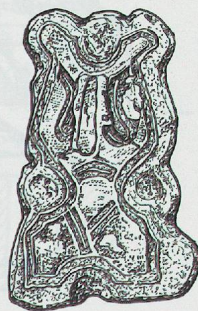
2



3



5

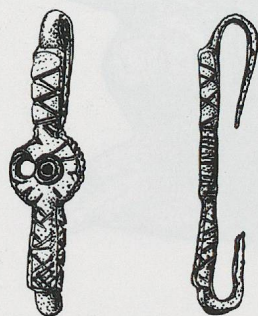


4

PLANCHE 16 - La Tour-de-Peilz, Clos d'Aubonne. T332-1 à 3 : fer damasquiné d'argent ; 4 et 5 : fer damasquiné d'argent et de laiton. Ech. 1:1.



T337



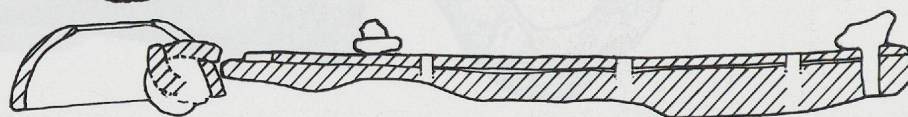
A-1



B-1

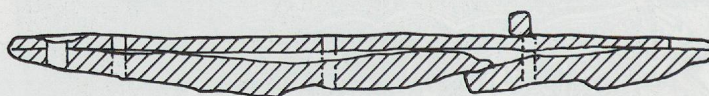


1



2

T336



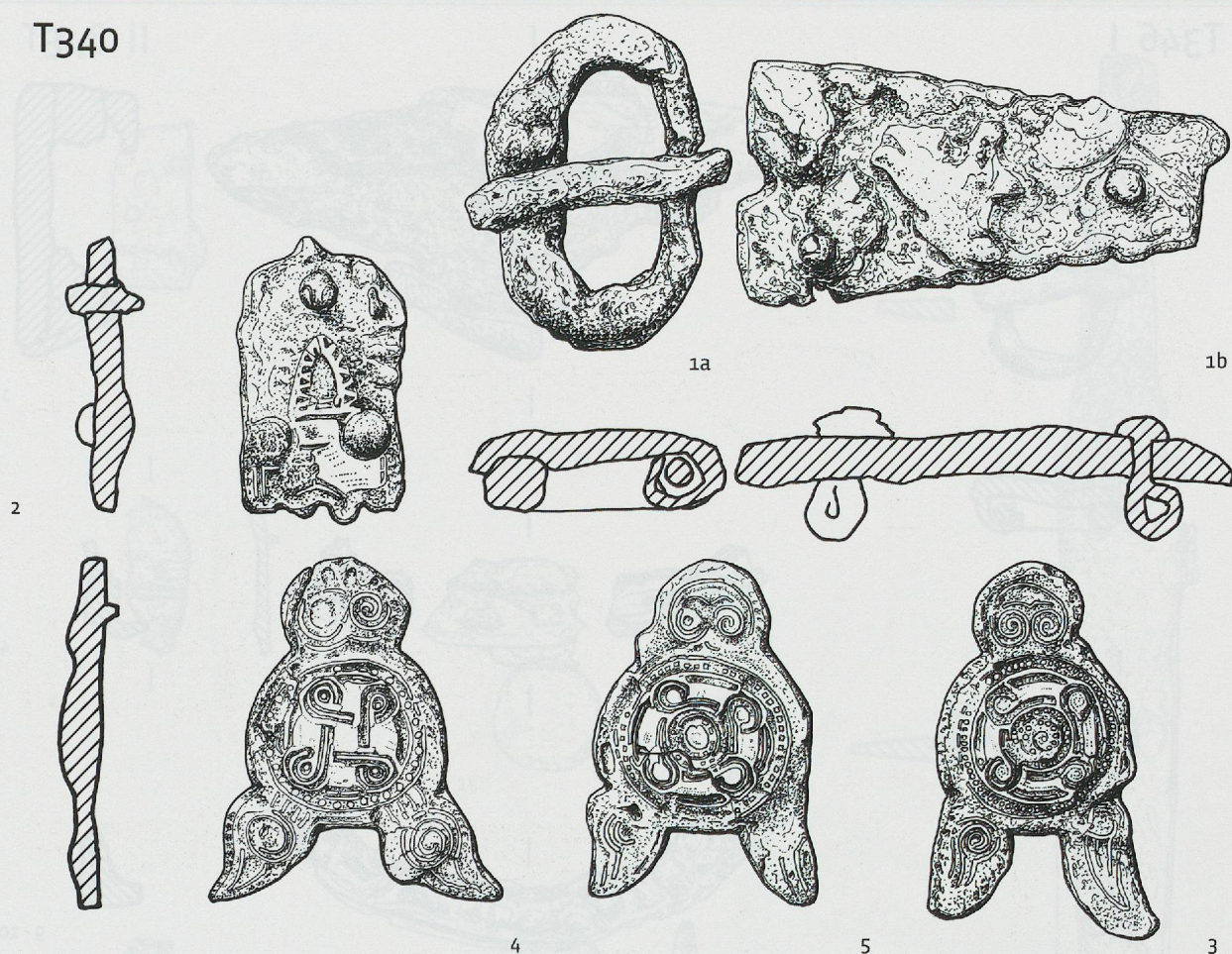
T357



3



T340



T360

1 à 118

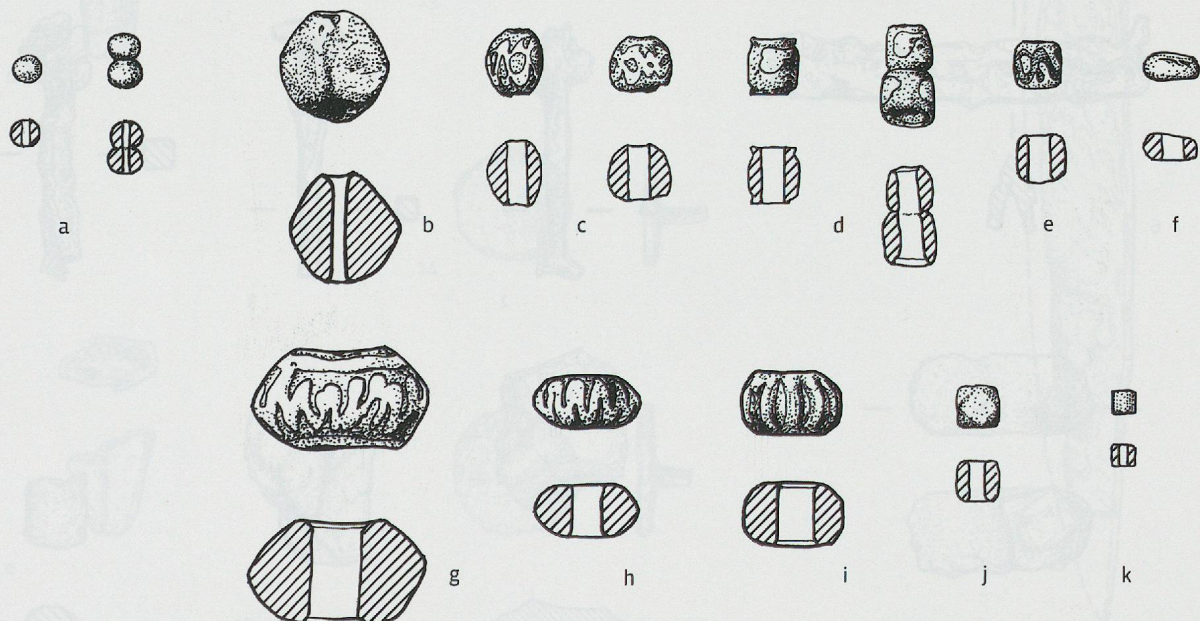


PLANCHE 18 - La Tour-de-Peilz, Clos d'Aubonne. T340-1a et b : fer ; 2 à 5 : fer damasquiné d'argent et de laitton. T360-a, c à k : verre ; b : ambre. Ech. 1:1.



T346 I

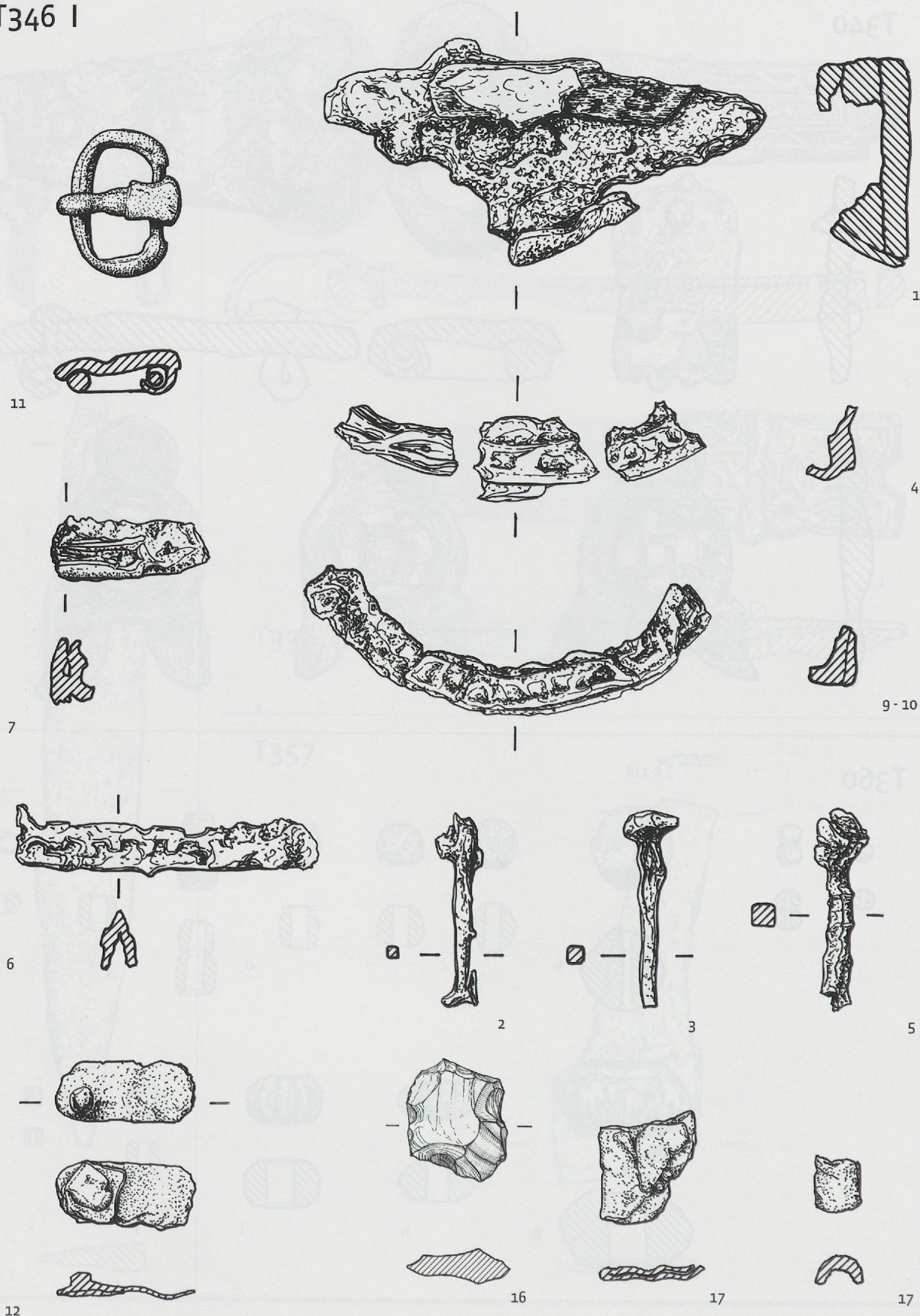


PLANCHE 19 - La Tour-de-Peilz, Clos d'Aubonne. T346 I : 1, 4, 6, 7, 9, 10 : fer oxydé avec empreintes de matériaux organiques ; 2, 3, 5 : fer ; 11, 12 : bronze ; 16 : silex ; 17 : plomb. Ech. 1/1.



## T346 II

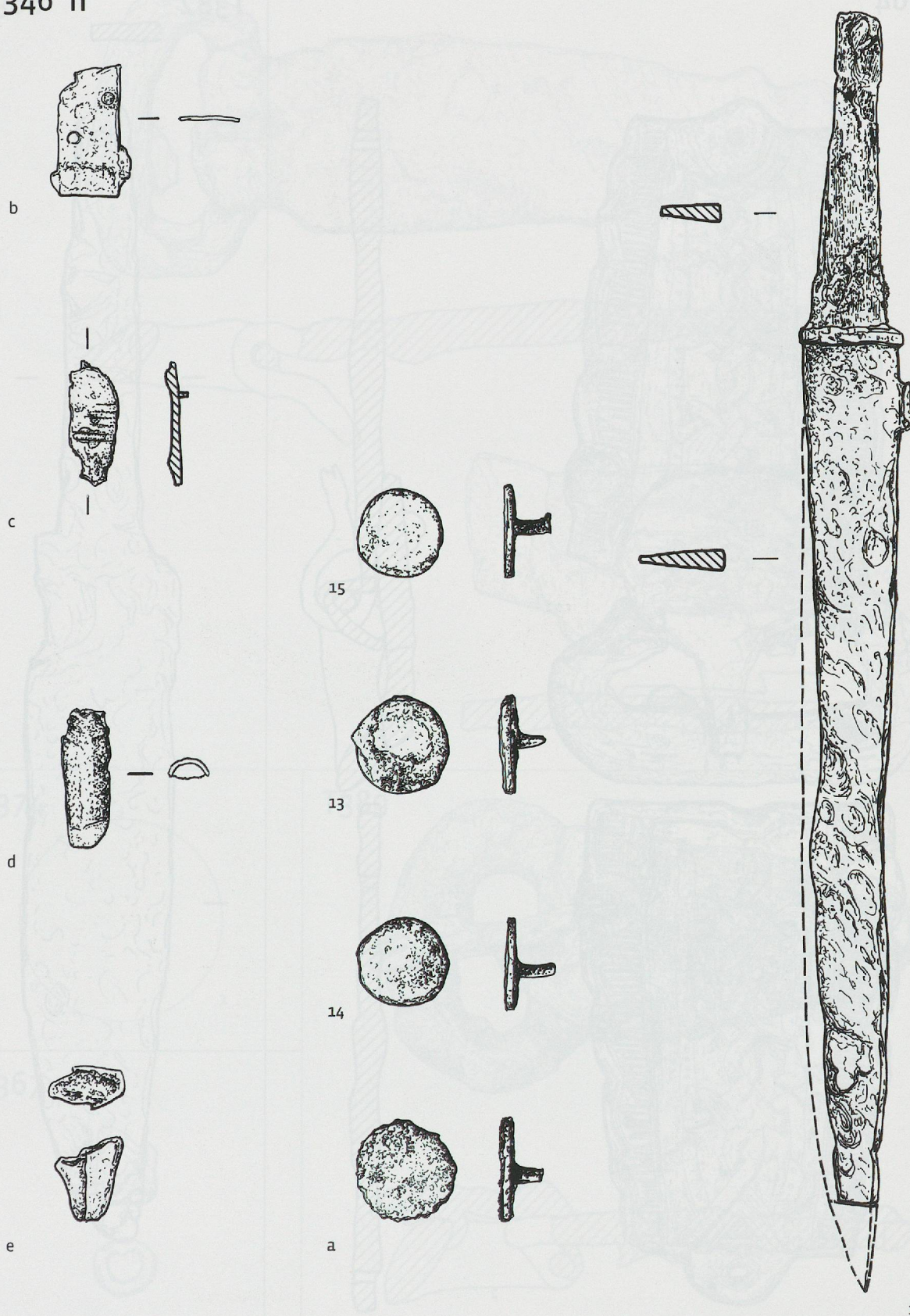
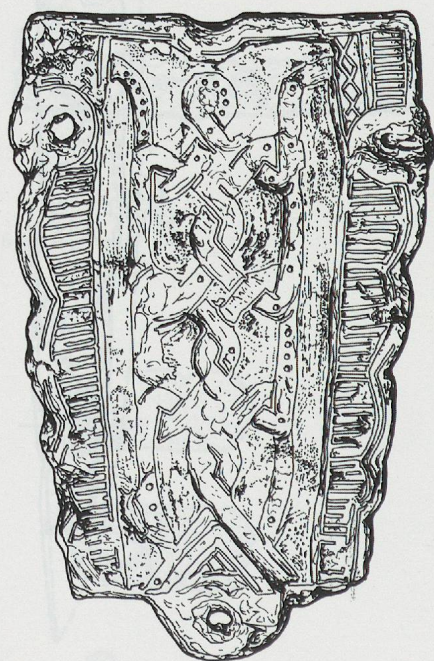
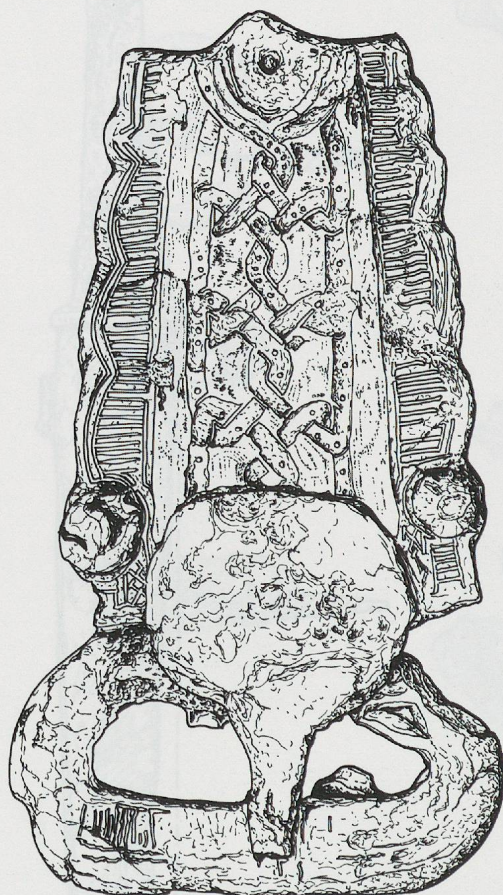


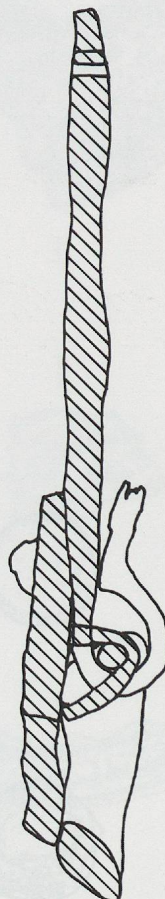
PLANCHE 19 bis - La Tour-de-Peilz, Clos d'Aubonne. T346 II : 13 à 15, a, b : bronze ; c, d, e : fer et bronze ; 18 : fer. Ech. 1:1; 18 : 1:2.



T364



1



2



T382



1

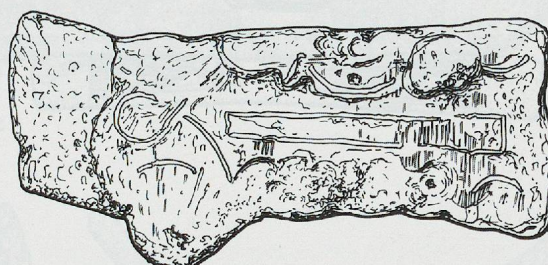
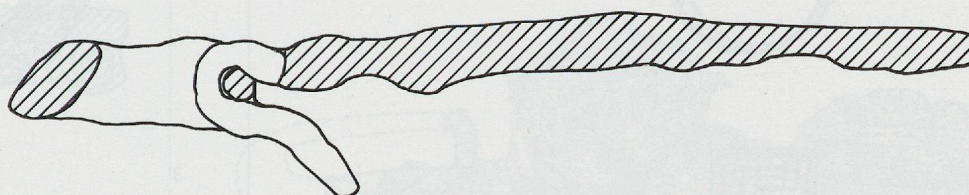




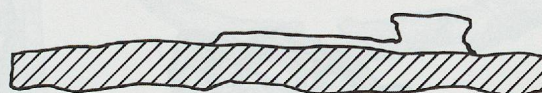
T366



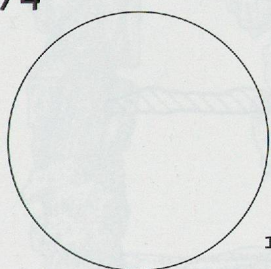
1



2

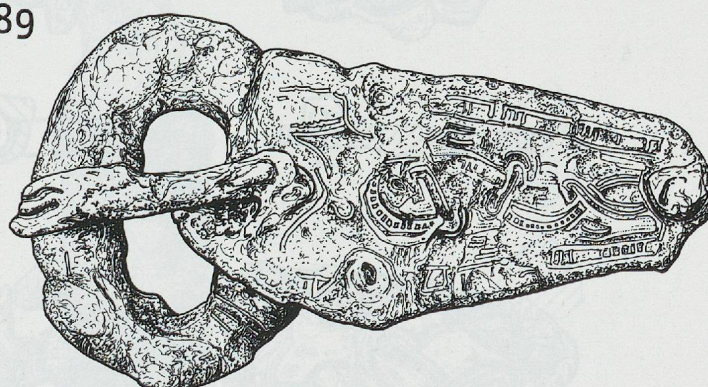


T374

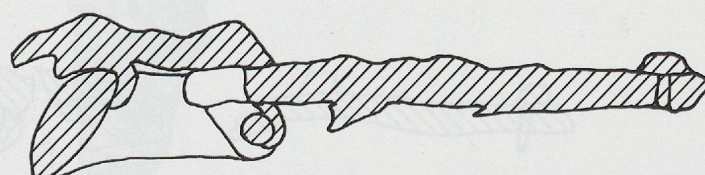


1

T389



T367





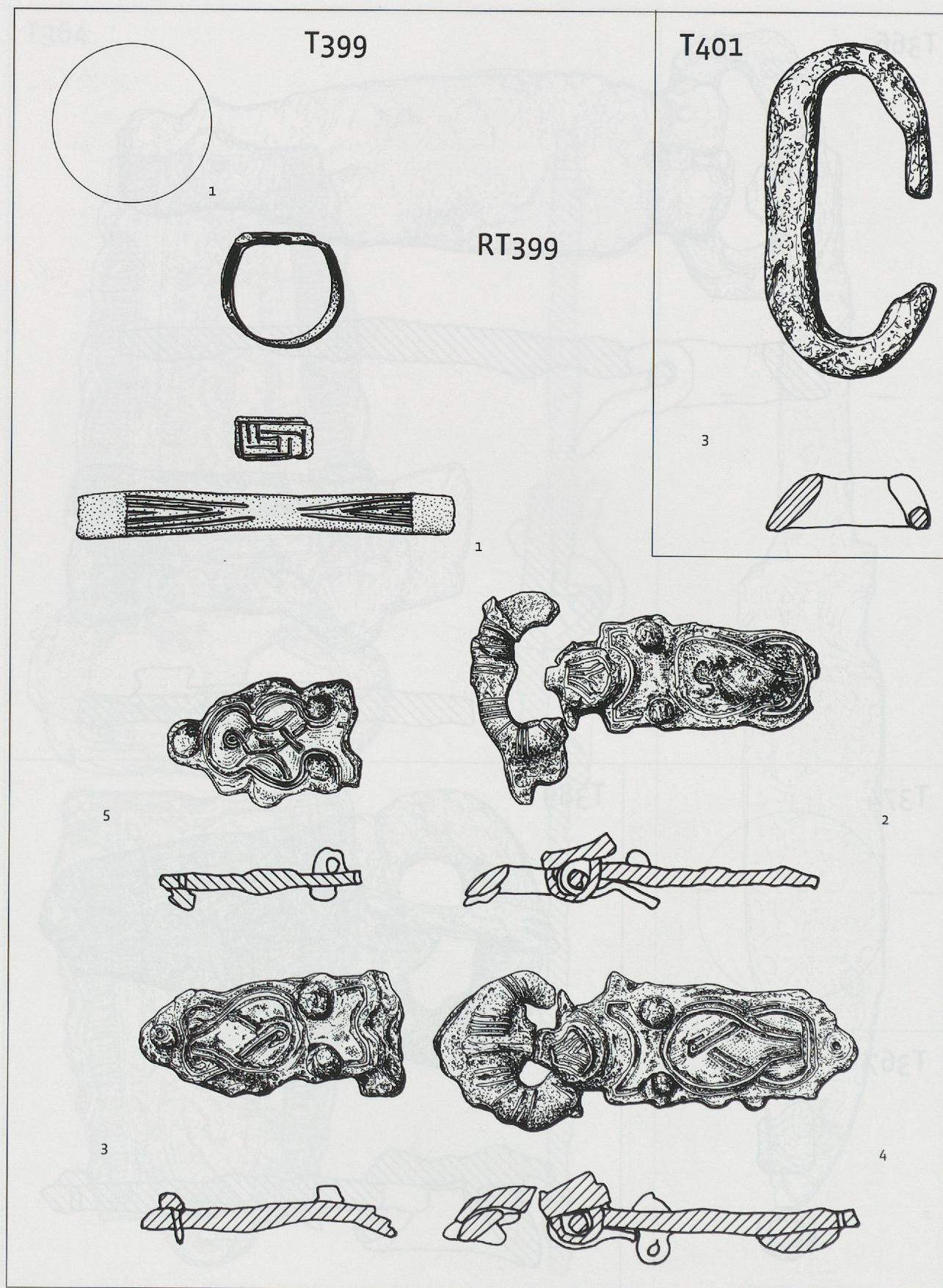


PLANCHE 22 - La Tour-de-Peilz, Clos d'Aubonne. T399-1 (cat. monnaies no 2), RT399-1 : bronze. RT399-2 à 5 : fer damasquiné d'argent et de laiton. T401-3 : fer. Ech. 1:1.



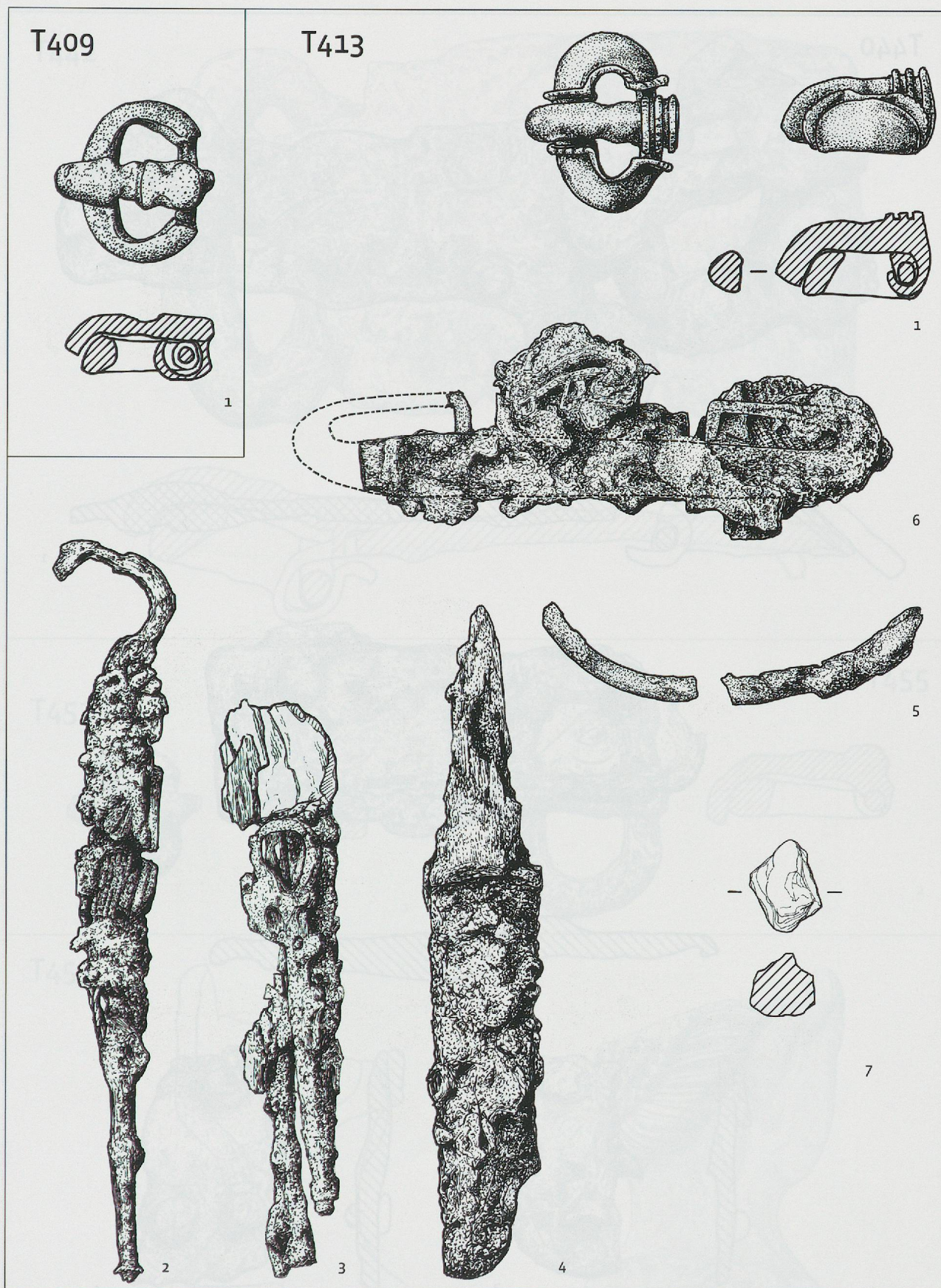
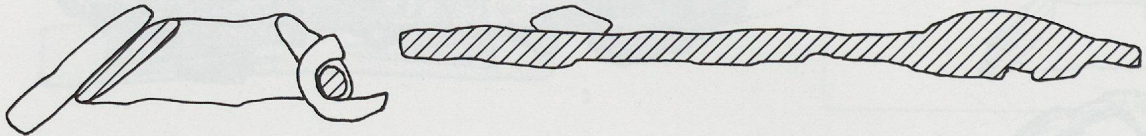
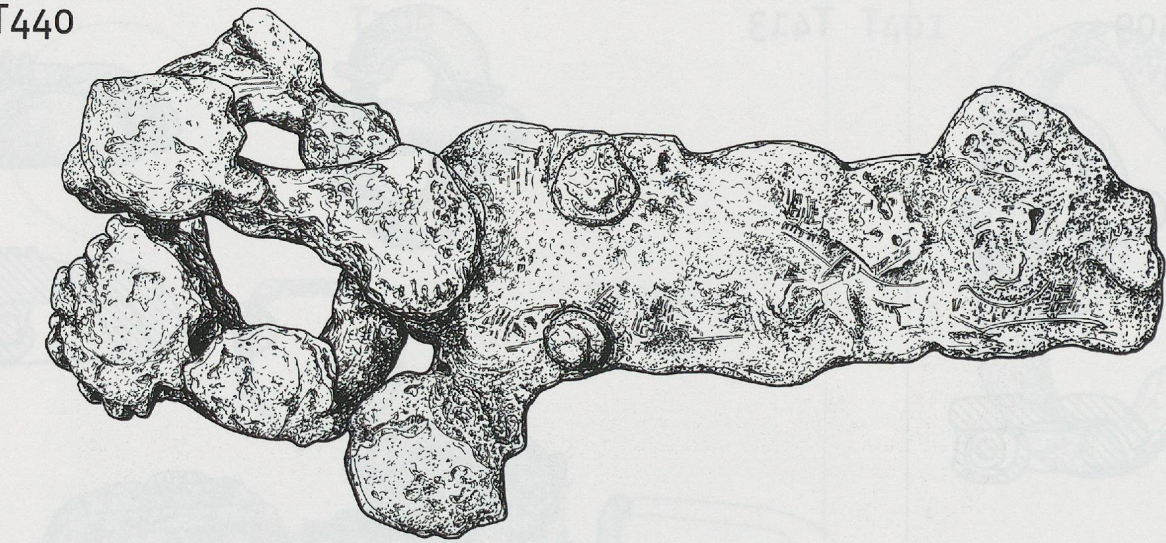


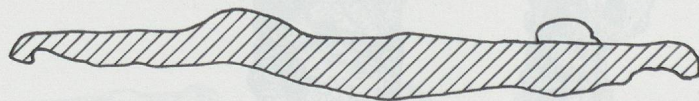
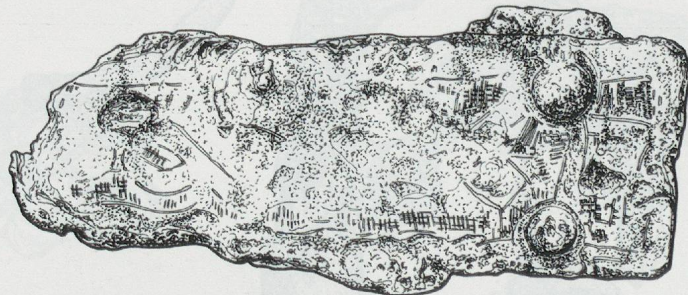
PLANCHE 23 - La Tour-de-Peilz, Clos d'Aubonne. T409-1, T413-1 et 5 : bronze. T413-2, 4, 6 : fer. T413-3 : fer, silex. T413-7 : cristal de roche. Ech. 1:1.



T440



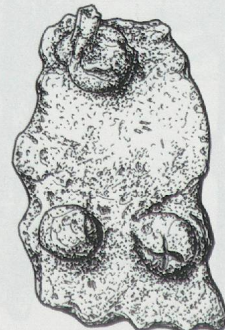
1



2



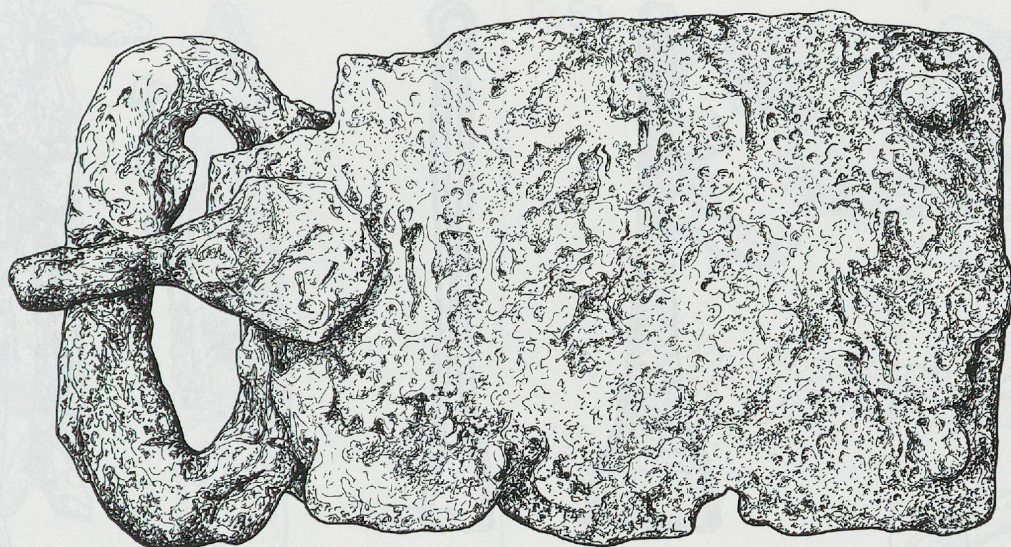
3



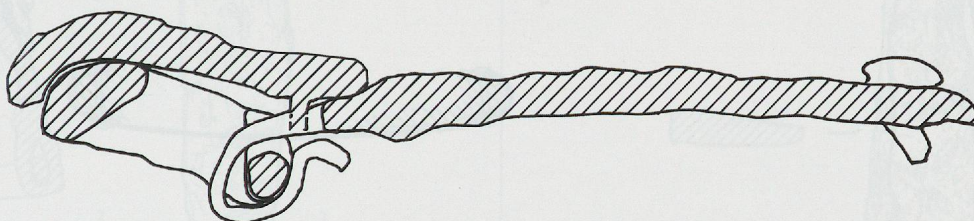
4



T442



1

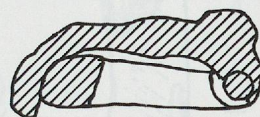


T452



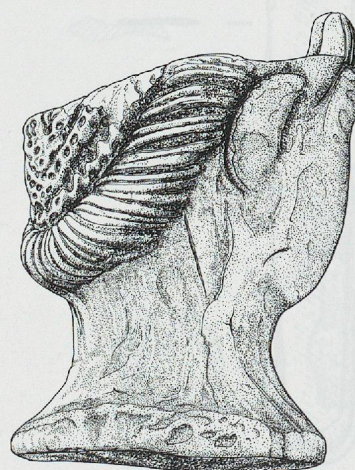
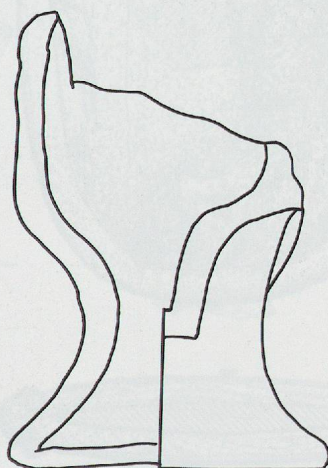
1

T455



2

T453



1



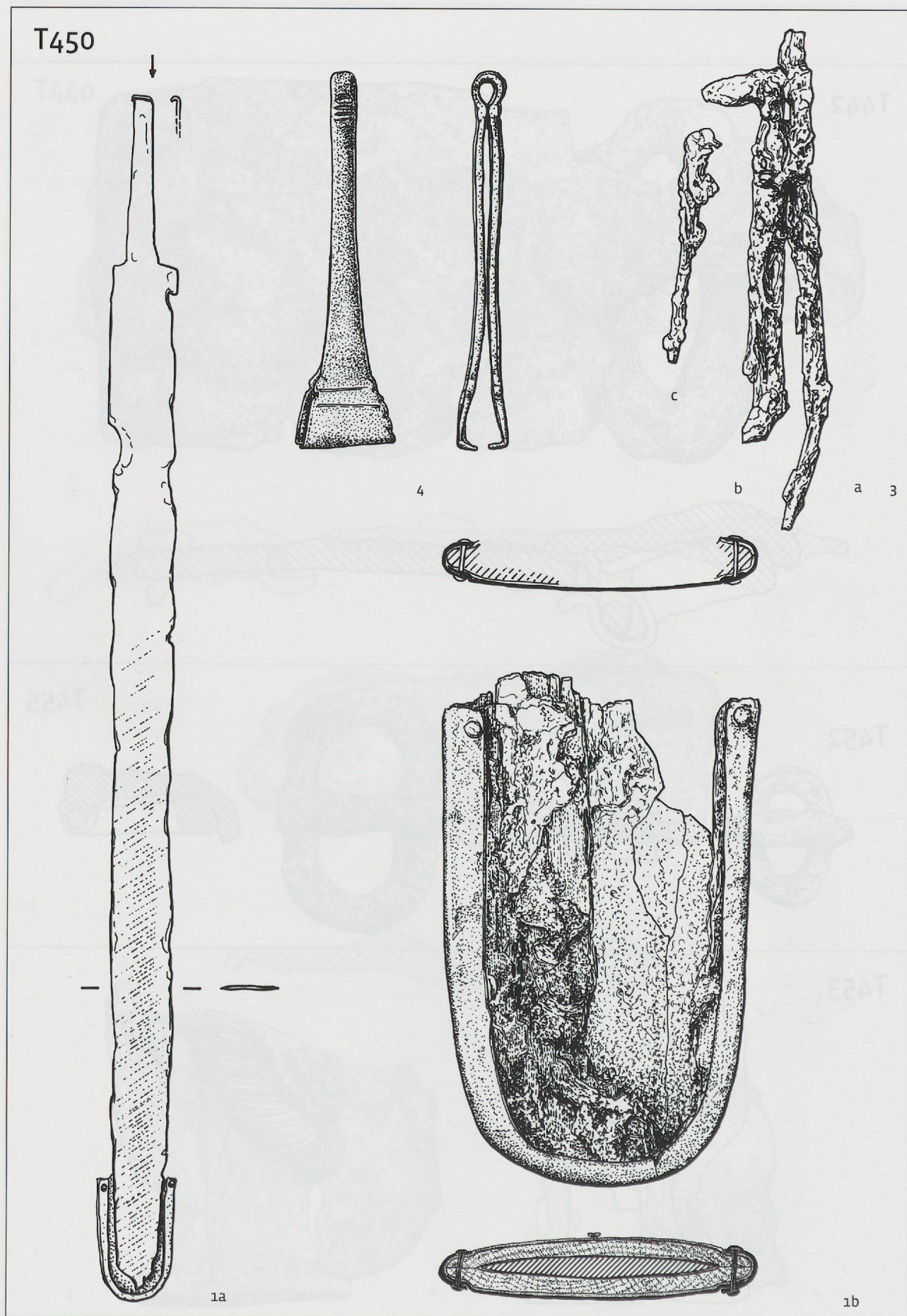


PLANCHE 26 - La Tour-de-Peilz, Clos d'Aubonne. T450-1a et 3 : fer ; 1b : bronze, restes organiques minéralisés ; 4 : bronze. Ech. 1:1; T450-1a : 1:4.



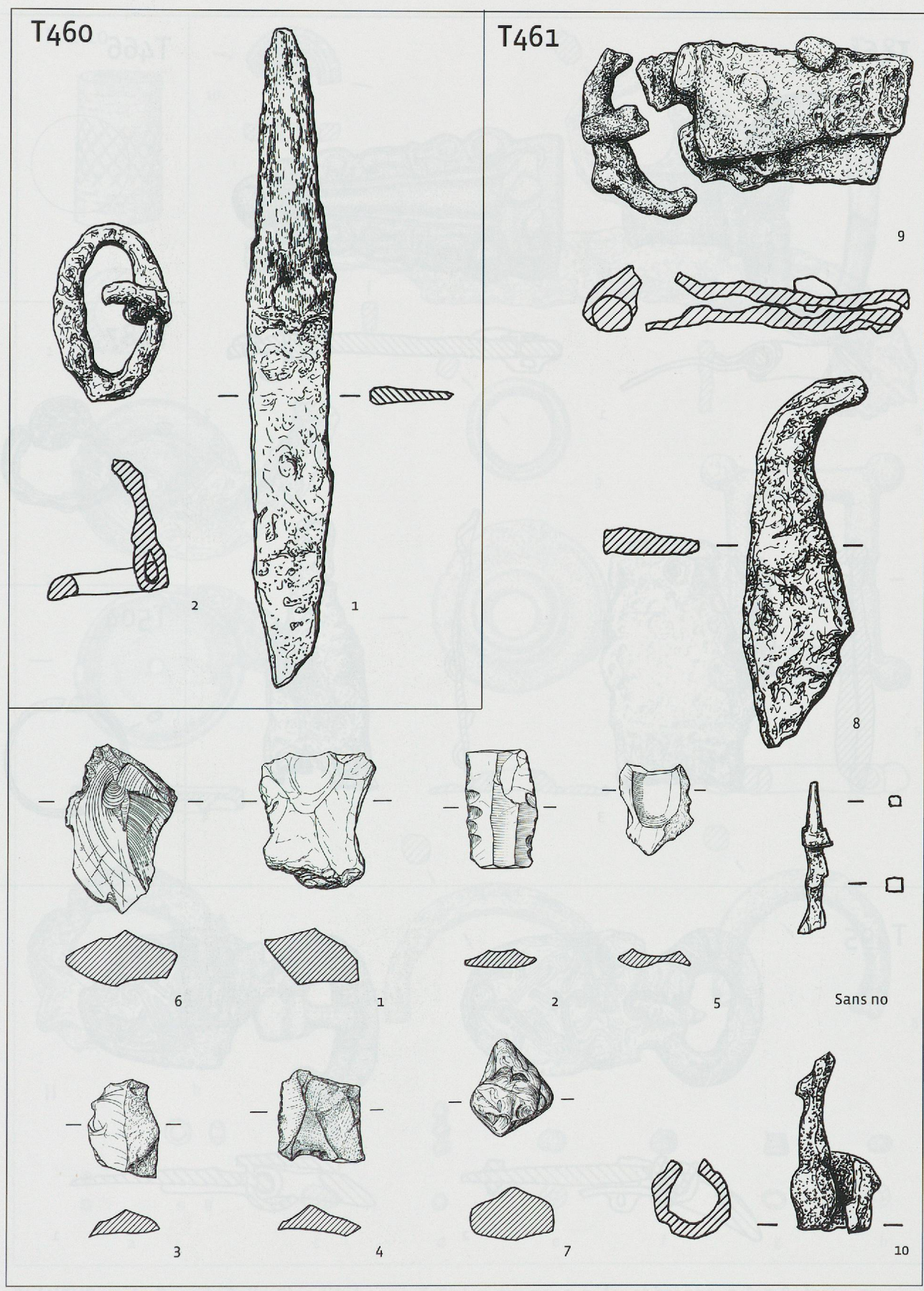
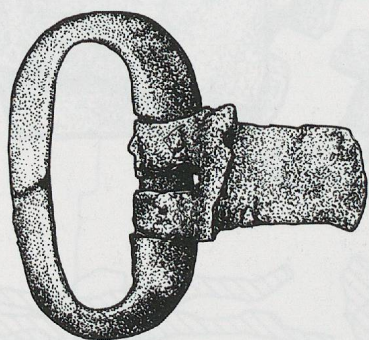


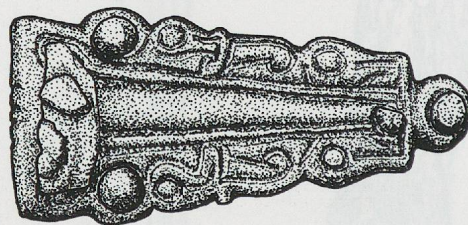
PLANCHE 27 - La Tour-de-Peilz, Clos d'Aubonne. T460-1 et 2, T461-8, 10, sans no : fer. T461-9 : fer, restes organiques minéralisés (cuir ?). T461-1 à 7 : silex. Ech. 1:1.



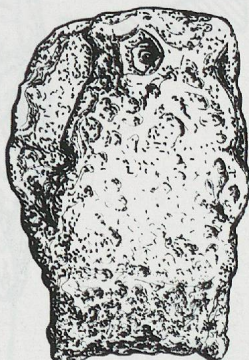
T464



1



2

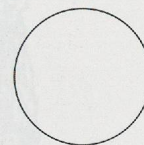


3



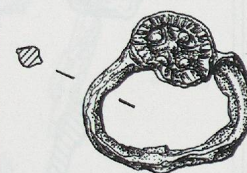
4

T466



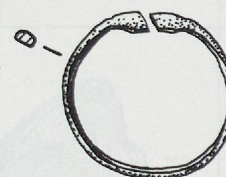
1

T487



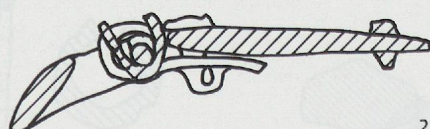
1

T504

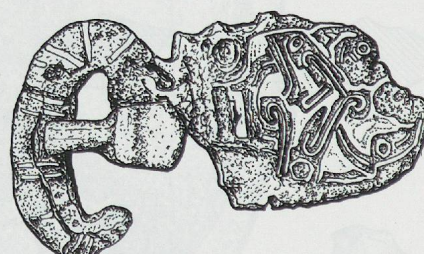


1

T495



2



1



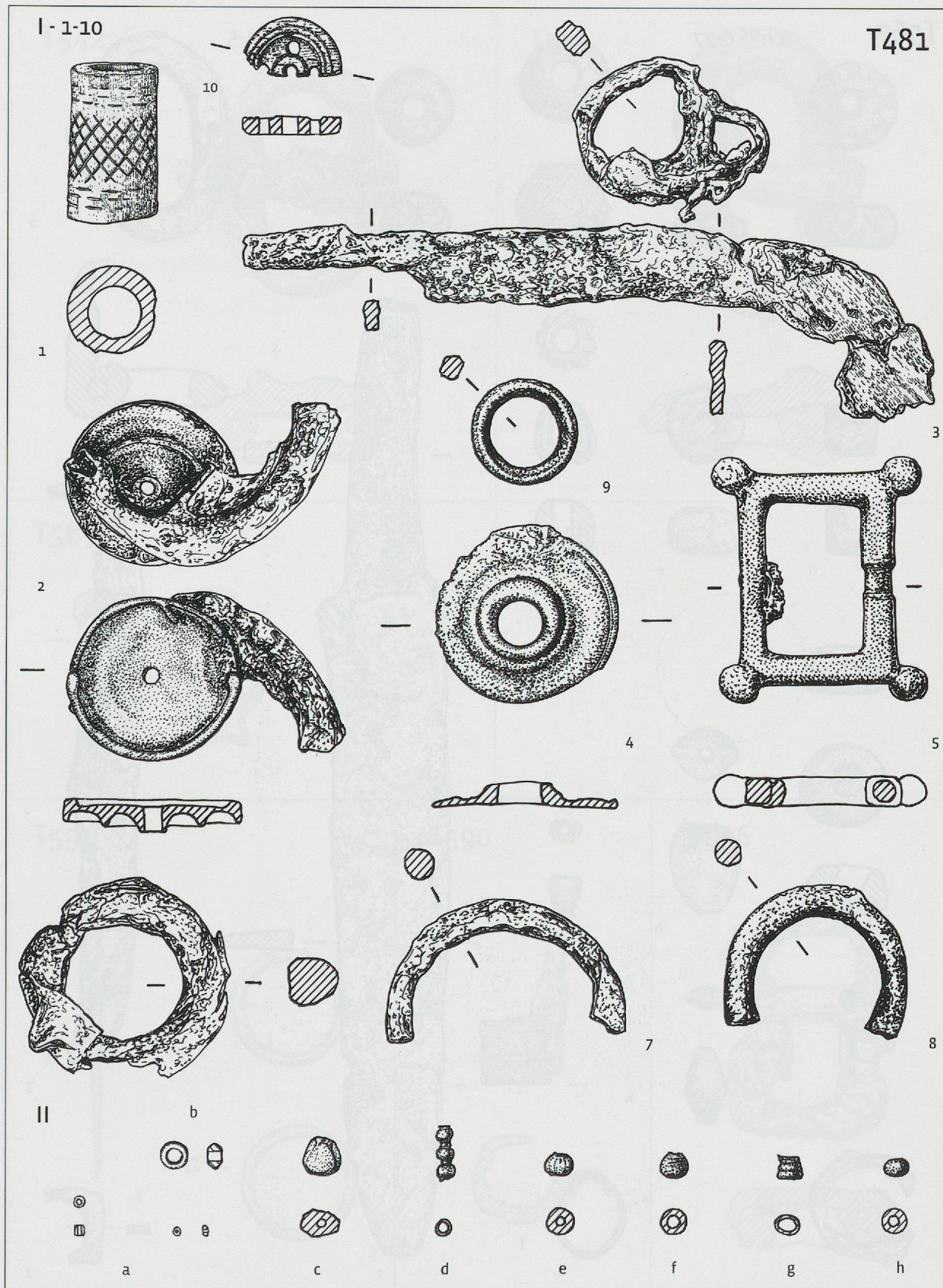


PLANCHE 29 - La Tour-de-Peilz, Clos d'Aubonne. T481 I : 1, 10 : os ; 2, 5 : fer et bronze ; 3, 6, 7, 8 : fer ; 4, 9 :



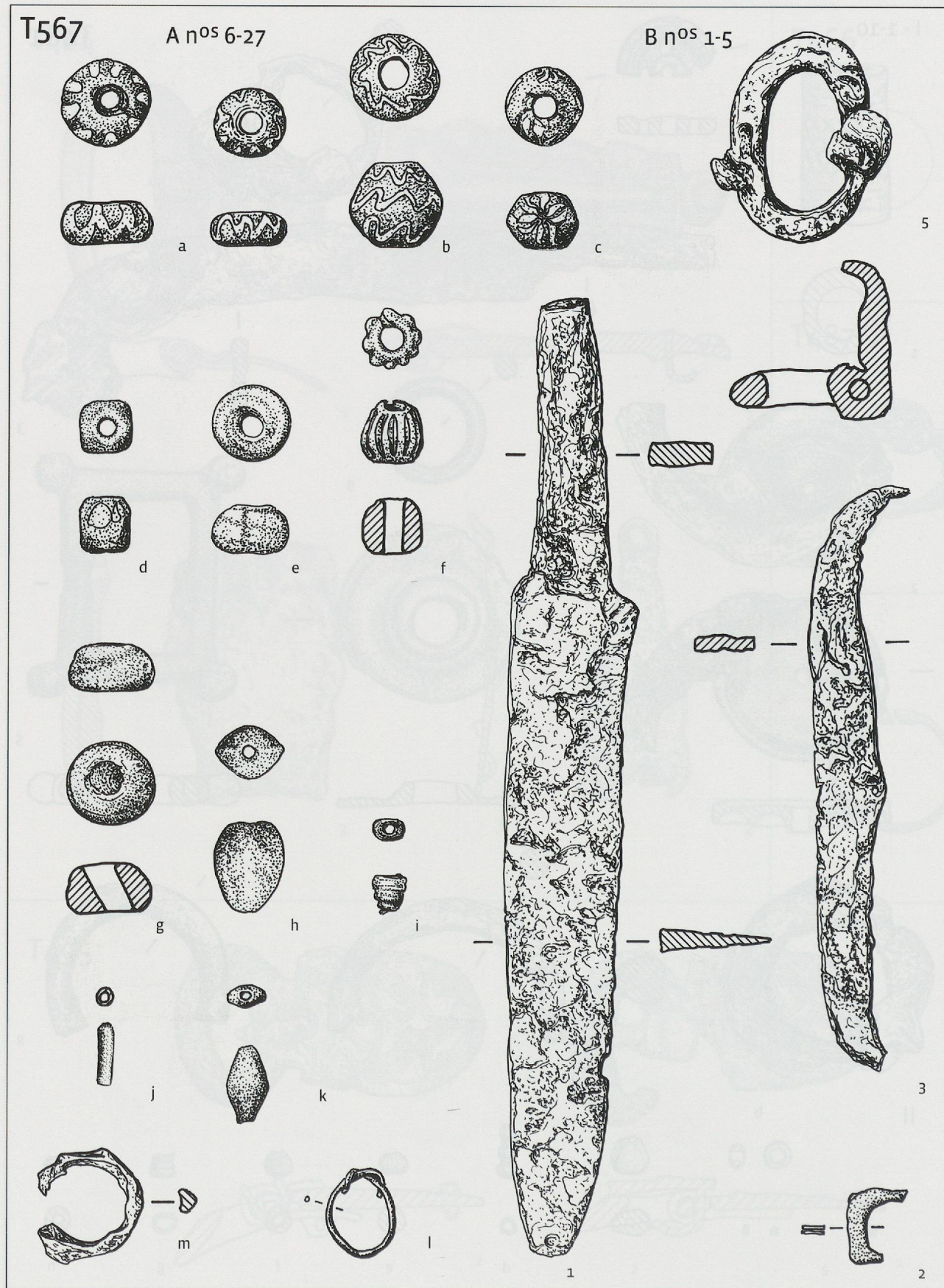
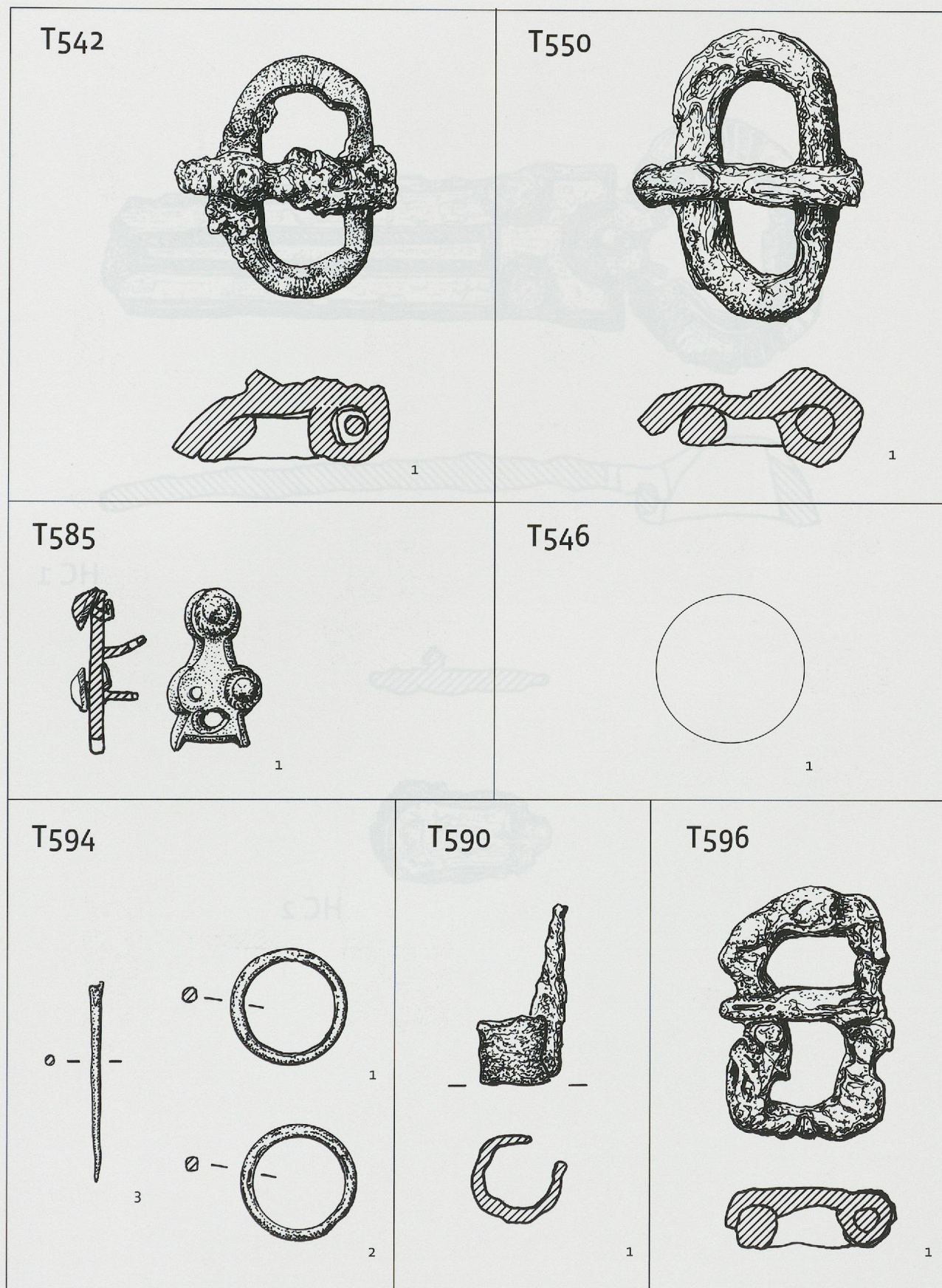
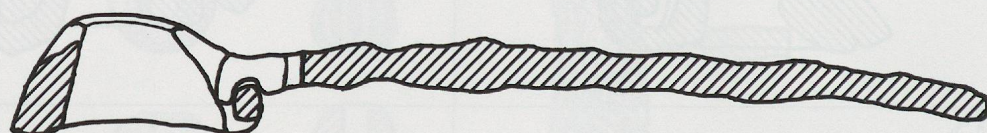
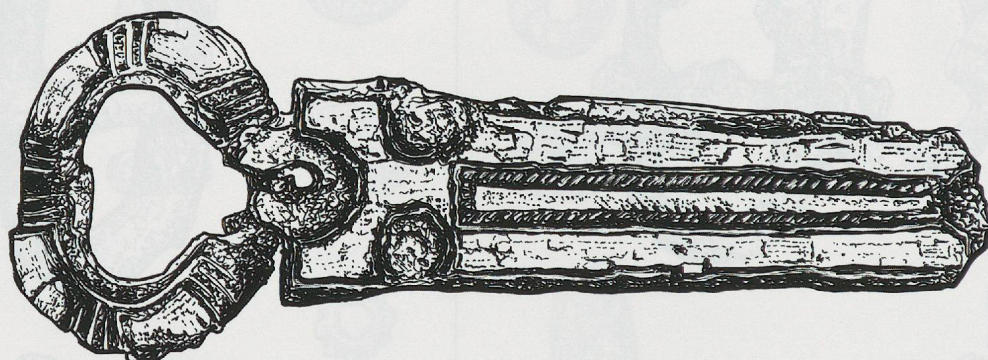


PLANCHE 30 - La Tour-de-Peilz, Clos d'Aubonne. T567 : A : a-j : verre ; k : ambre ; l : bronze ; m : fer. B : 1, 3, 5 : fer ; 2 : bronze. Ech. 1:1.









HC 1



HC 2













a. Fibules ansées en argent doré de T170. Photo: Fibbi-Aeppli, Grandson.

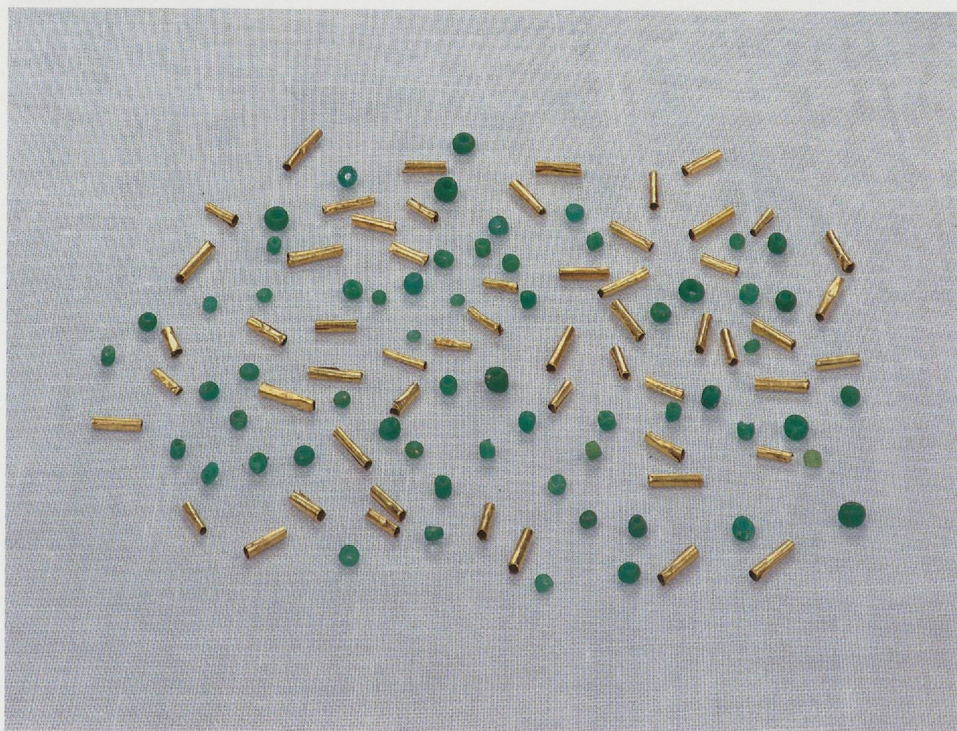


b. Ensemble de perles de verre et d'ambre déposé sur la poitrine de T170. Photo: Fibbi-Aeppli, Grandson.





**a.** Perles tubulaires en or et petites perles de verre vert de la coiffe de T170. Photo: Fibbi-Aeppli, Grandson.



**b.** Perles tubulaires en or et petites perles de verre vert de la coiffe de T143. Photo: Fibbi-Aeppli, Grandson.





**a.** Filaments d'or et petit cristal de roche de la coiffe de T137.  
Photo: Fibbi-Aeppli, Grandson..



**b.** Perles de verre et d'ambre de T481. Photo: Fibbi-Aeppli, Grandson.





a. Perles de verre du collier de T197.1. Photo: Fibbi-Aeppli, Grandson.



b. Perles de verre et d'ambre du collier de T360. Photo: Fibbi-Aeppli, Grandson.





a. Ensemble de perles de verre déposé sur la poitrine de T567 B. Photo : Fibbi-Aeppli, Grandson.



a. Ensemble de perles de verre déposé sur la poitrine de T567 B. Photo : MHA VD.





**a.** Petite plaque-boucle rectangulaire étroite de T22, à décor de cercles ocellés damasquinés en laiton et en cuivre. Photo: Fibbi-Aeppli, Grandson.



**b.** Garniture composite de T340. Photo: Fibbi-Aeppli, Grandson.





**a.** Les traces organiques du contenant en bois T444. a: aspect au niveau d'apparition; b: aspect au niveau du squelette. Photo: MHA VD.



**b.** Coffre de dalles T152 : entourage fait de quatre dalles soigneusement ajustées et liées au mortier de chaux. Photo: MHA VD.



