

Zeitschrift: Cahiers d'archéologie romande
Herausgeber: Bibliothèque Historique Vaudoise
Band: 64 (1995)

Artikel: Arsenic, nickel et antimoine : une approche de la métallurgie de Bronze moyen et final en Suisse par l'analyse spectrométrique : tome II
Autor: Rychner, Valentin / Kläntschi, Niklaus
Rubrik: Planches
DOI: <https://doi.org/10.5169/seals-836150>

Nutzungsbedingungen

Die ETH-Bibliothek ist die Anbieterin der digitalisierten Zeitschriften auf E-Periodica. Sie besitzt keine Urheberrechte an den Zeitschriften und ist nicht verantwortlich für deren Inhalte. Die Rechte liegen in der Regel bei den Herausgebern beziehungsweise den externen Rechteinhabern. Das Veröffentlichen von Bildern in Print- und Online-Publikationen sowie auf Social Media-Kanälen oder Webseiten ist nur mit vorheriger Genehmigung der Rechteinhaber erlaubt. [Mehr erfahren](#)

Conditions d'utilisation

L'ETH Library est le fournisseur des revues numérisées. Elle ne détient aucun droit d'auteur sur les revues et n'est pas responsable de leur contenu. En règle générale, les droits sont détenus par les éditeurs ou les détenteurs de droits externes. La reproduction d'images dans des publications imprimées ou en ligne ainsi que sur des canaux de médias sociaux ou des sites web n'est autorisée qu'avec l'accord préalable des détenteurs des droits. [En savoir plus](#)

Terms of use

The ETH Library is the provider of the digitised journals. It does not own any copyrights to the journals and is not responsible for their content. The rights usually lie with the publishers or the external rights holders. Publishing images in print and online publications, as well as on social media channels or websites, is only permitted with the prior consent of the rights holders. [Find out more](#)

Download PDF: 18.04.2026

ETH-Bibliothek Zürich, E-Periodica, <https://www.e-periodica.ch>

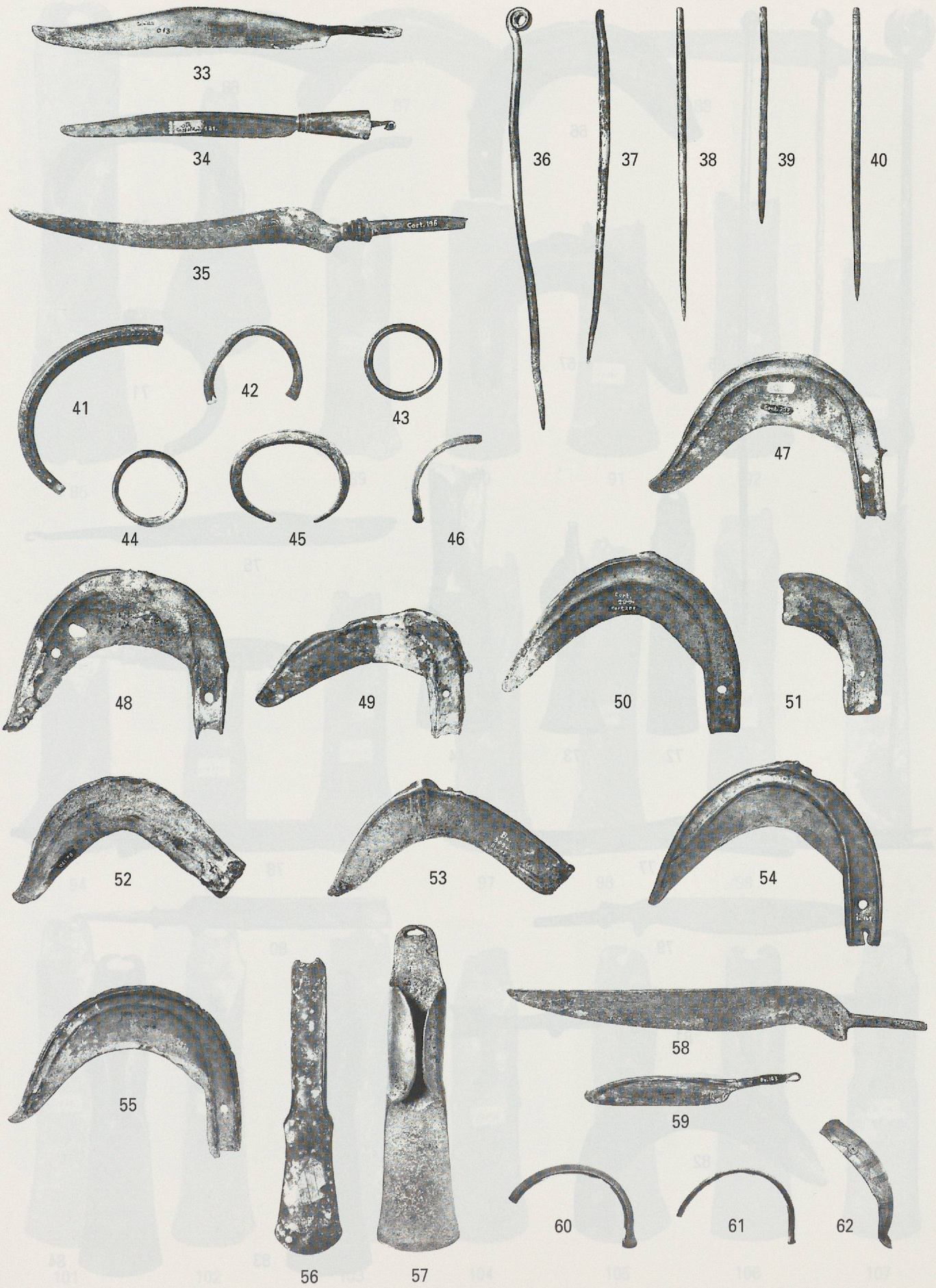
PLANCHES

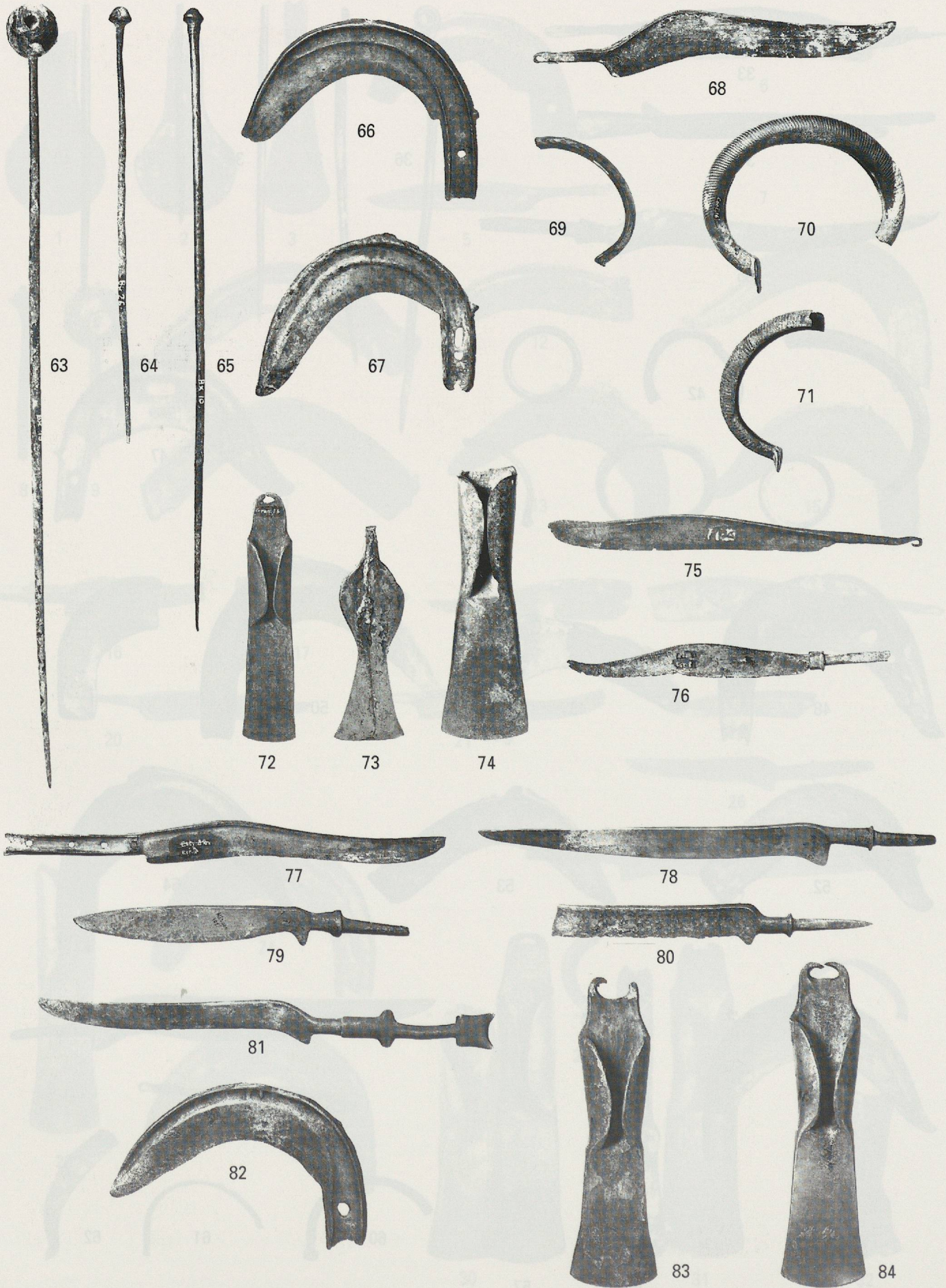


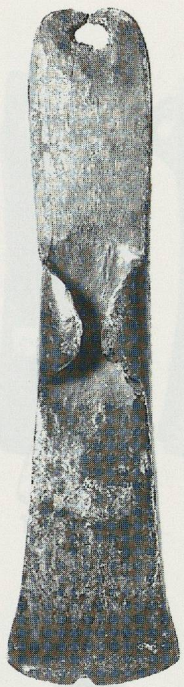
Prise de vue: Valentin Rychner
 Tirage: Yves André

Les objets sont représentés à l'échelle 1:3, à l'exception des épingles et des objets 41-44, 487-492, 719-726, 739-741, 757, 843, 905-906, 922-924, qui sont à l'échelle 2:3.

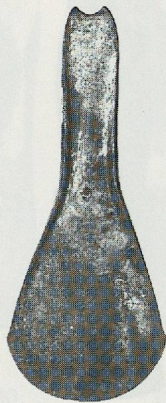




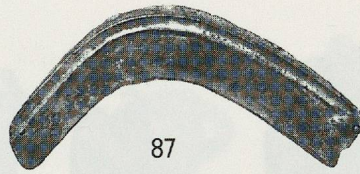




85



86



87



88



89



90



91



92



93



94



95



96



97



98



99



100



101



102



103



104



105



106



107



108



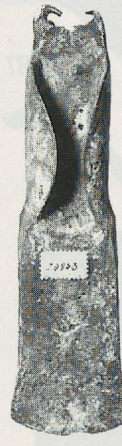
109



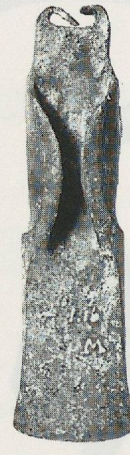
110



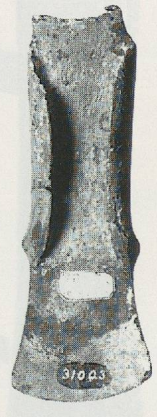
111



112



113



114



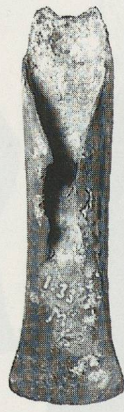
115



116



117



118



119



120



121



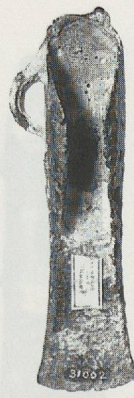
122



123



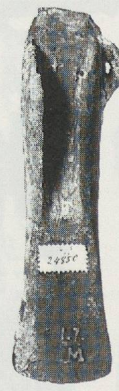
124



125



126



127



128



129 130 131 132 133 134 135 136



137 138 139 140 141 142 143 144



145 146 147 148 149 150 151 152



153

154

155

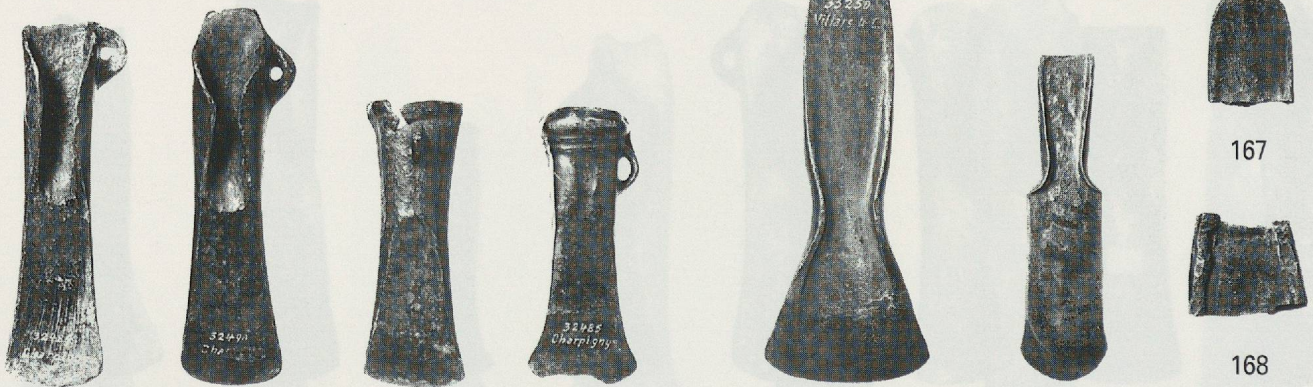
156

157

158

159

160



161

162

163

164

165

166

167

168

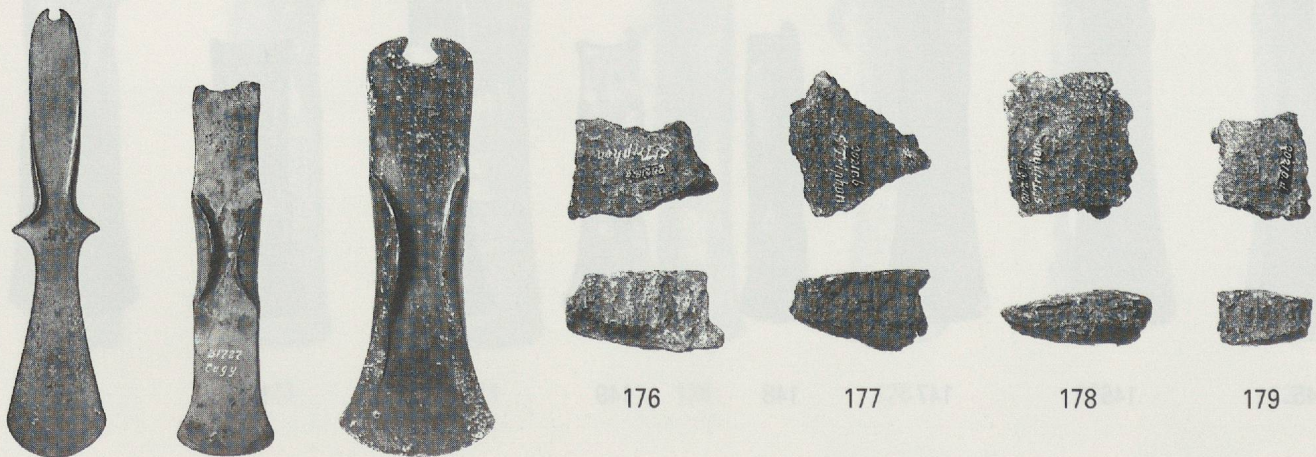


169

170

171

172



173

174

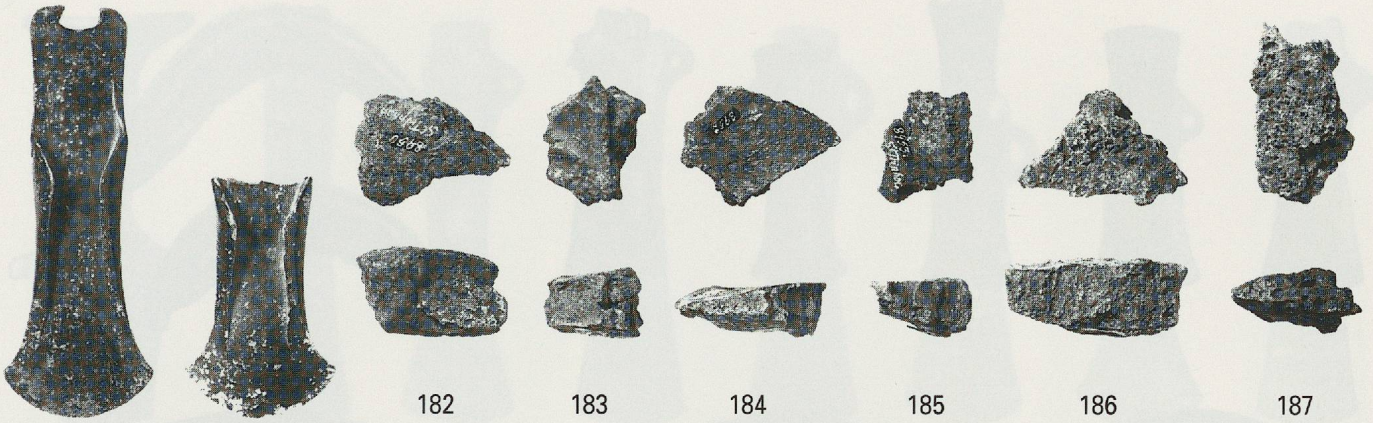
175

176

177

178

179



180

181

182

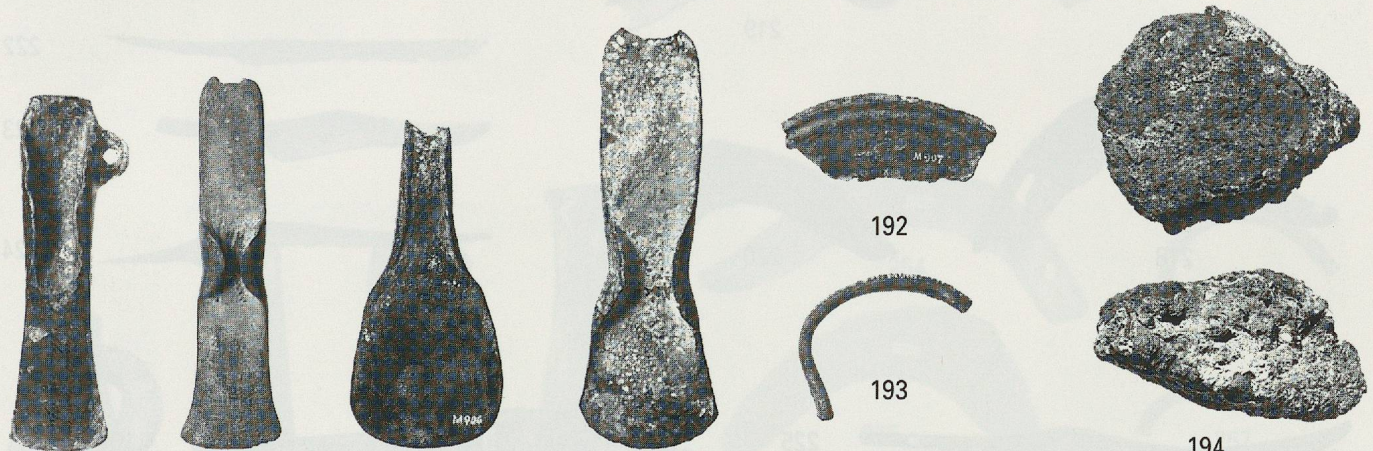
183

184

185

186

187



188

189

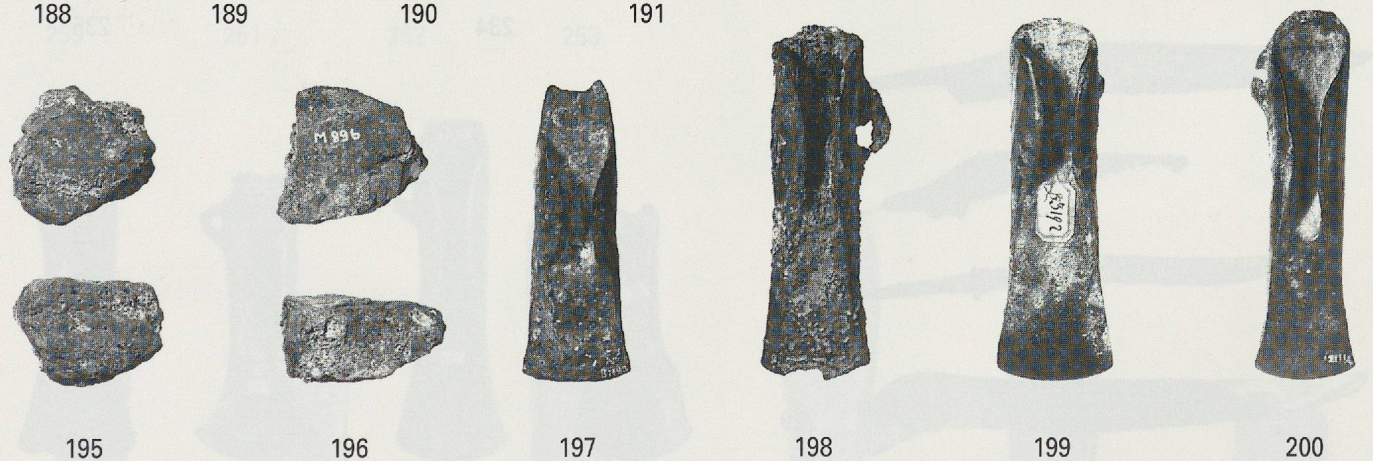
190

191

192

193

194



195

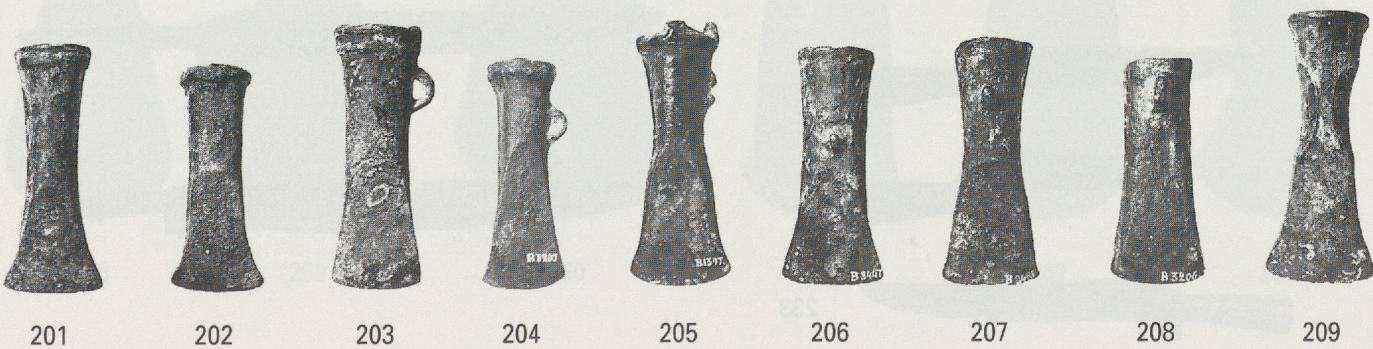
196

197

198

199

200



201

202

203

204

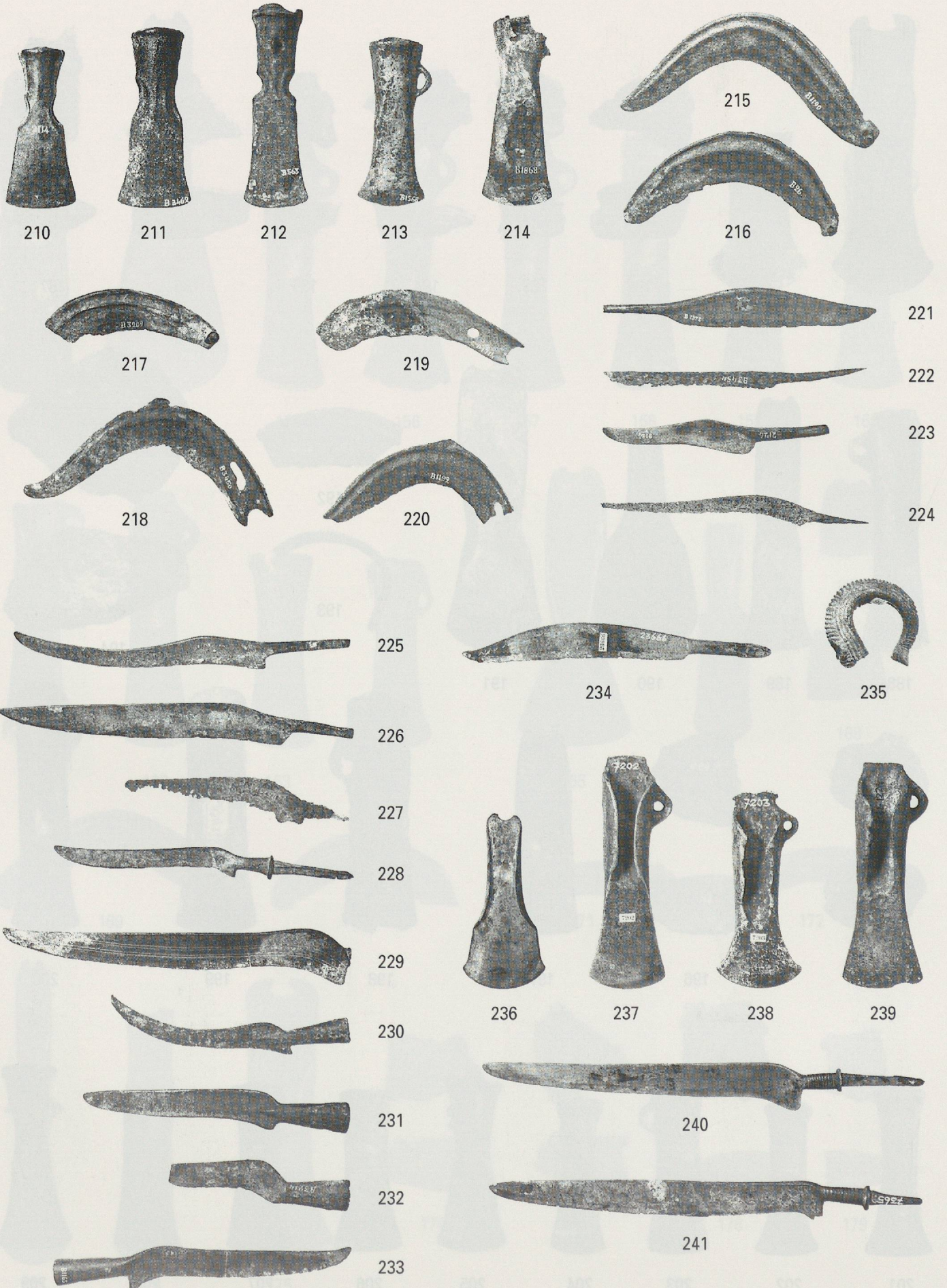
205

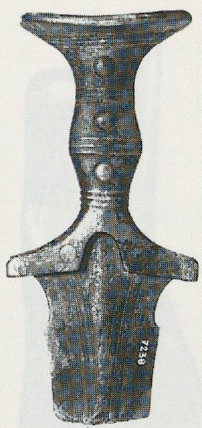
206

207

208

209





242



243



244



245



246



247



248



249



250



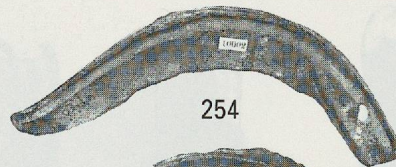
251



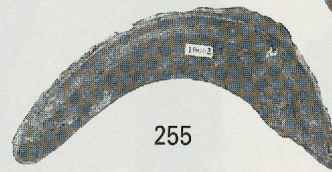
252



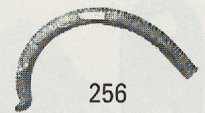
253



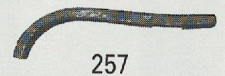
254



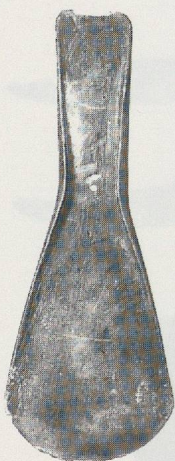
255



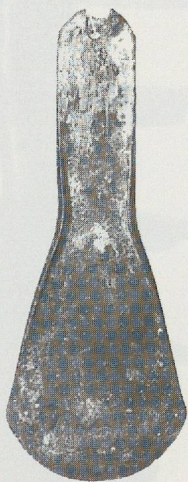
256



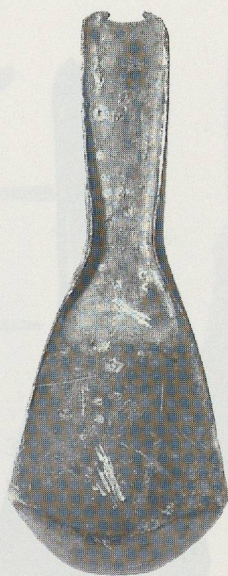
257



258



259



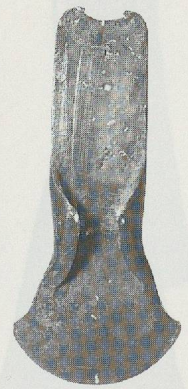
260



261



262



263



264



265



266



267



268



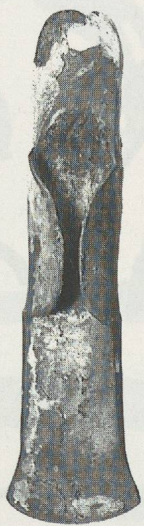
269



270



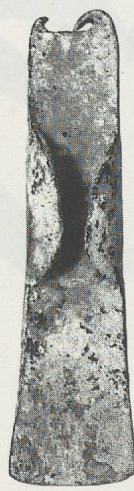
271



272



273



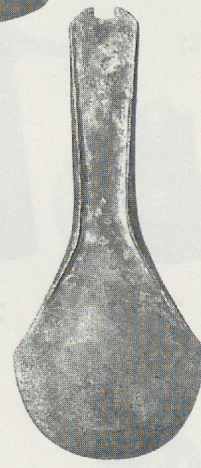
274



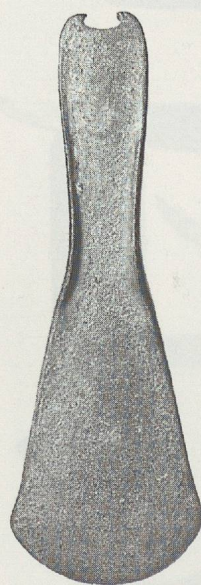
275



276



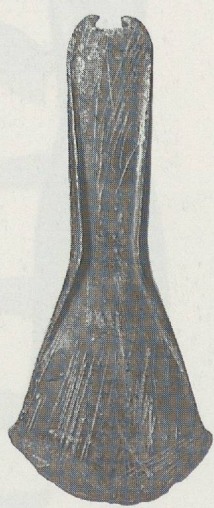
277



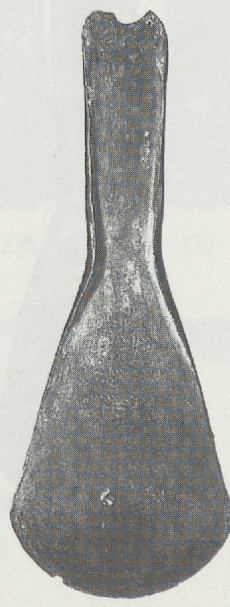
278



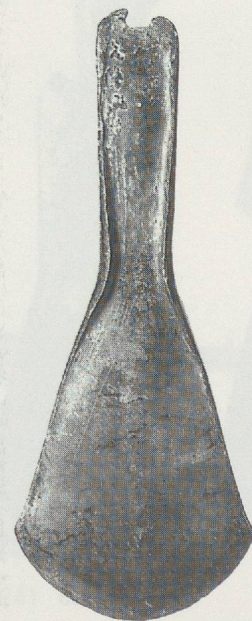
279



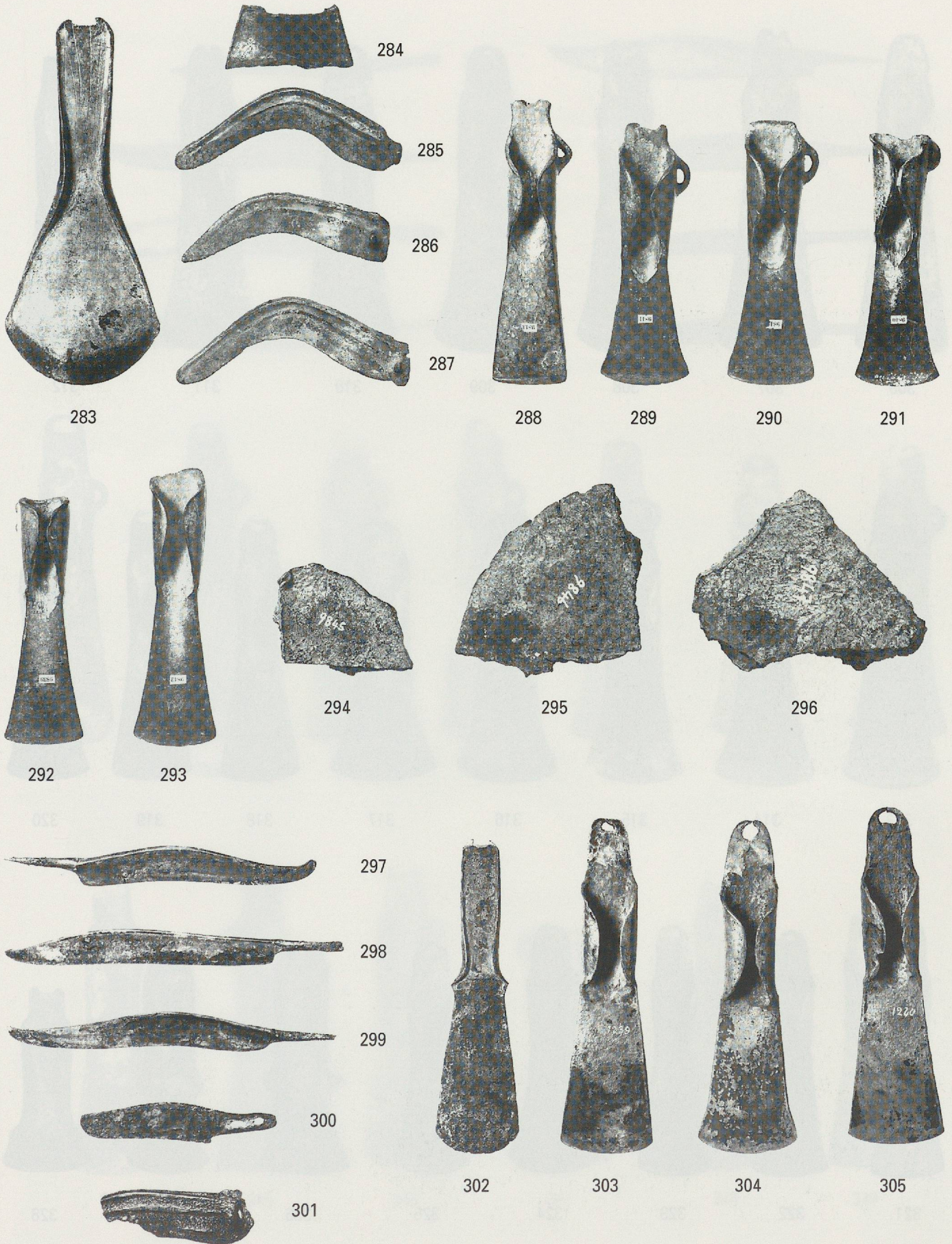
280



281



282





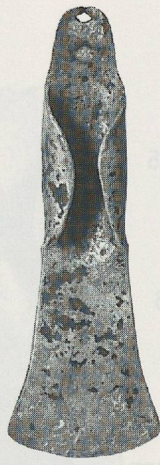
306



307



308



309



310



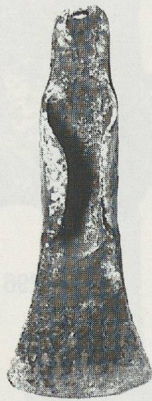
311



312



313



314



315



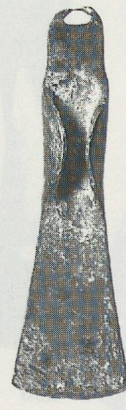
316



317



318



319



320



321



322



323



324



325



326



327



328



329



333



330



334



331



335



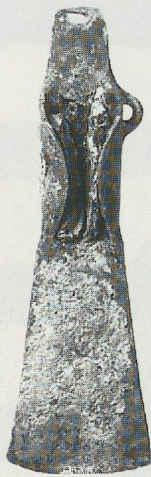
332



336



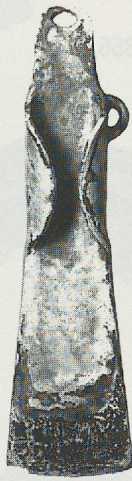
337



338



339



340



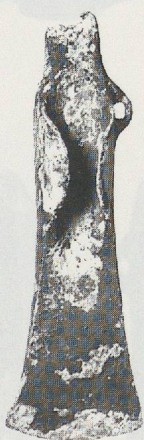
341



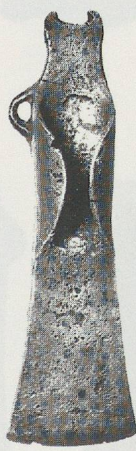
342



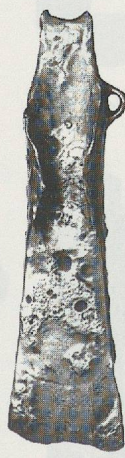
343



344



345



346



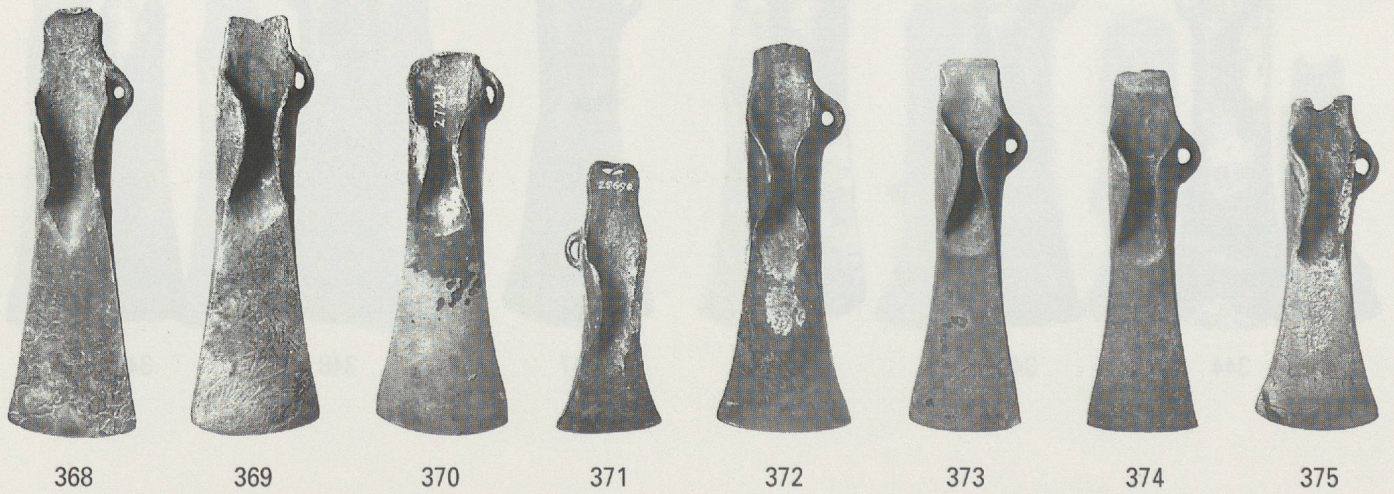
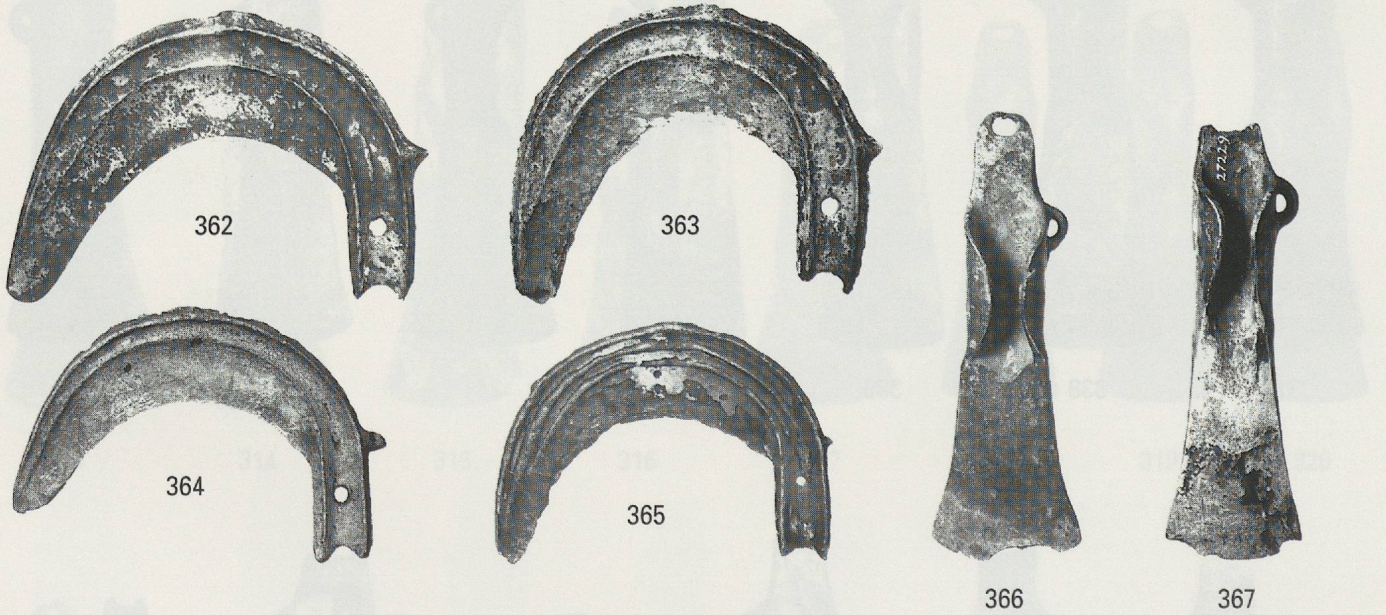
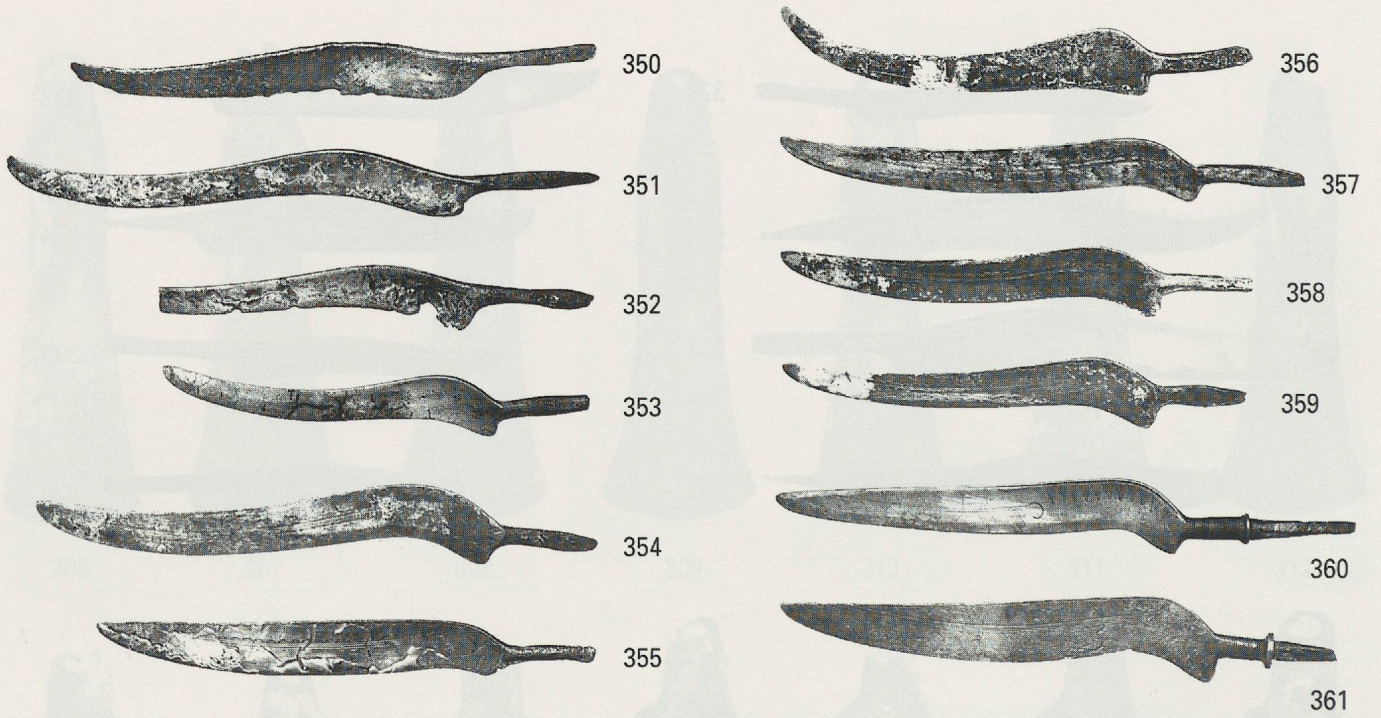
347

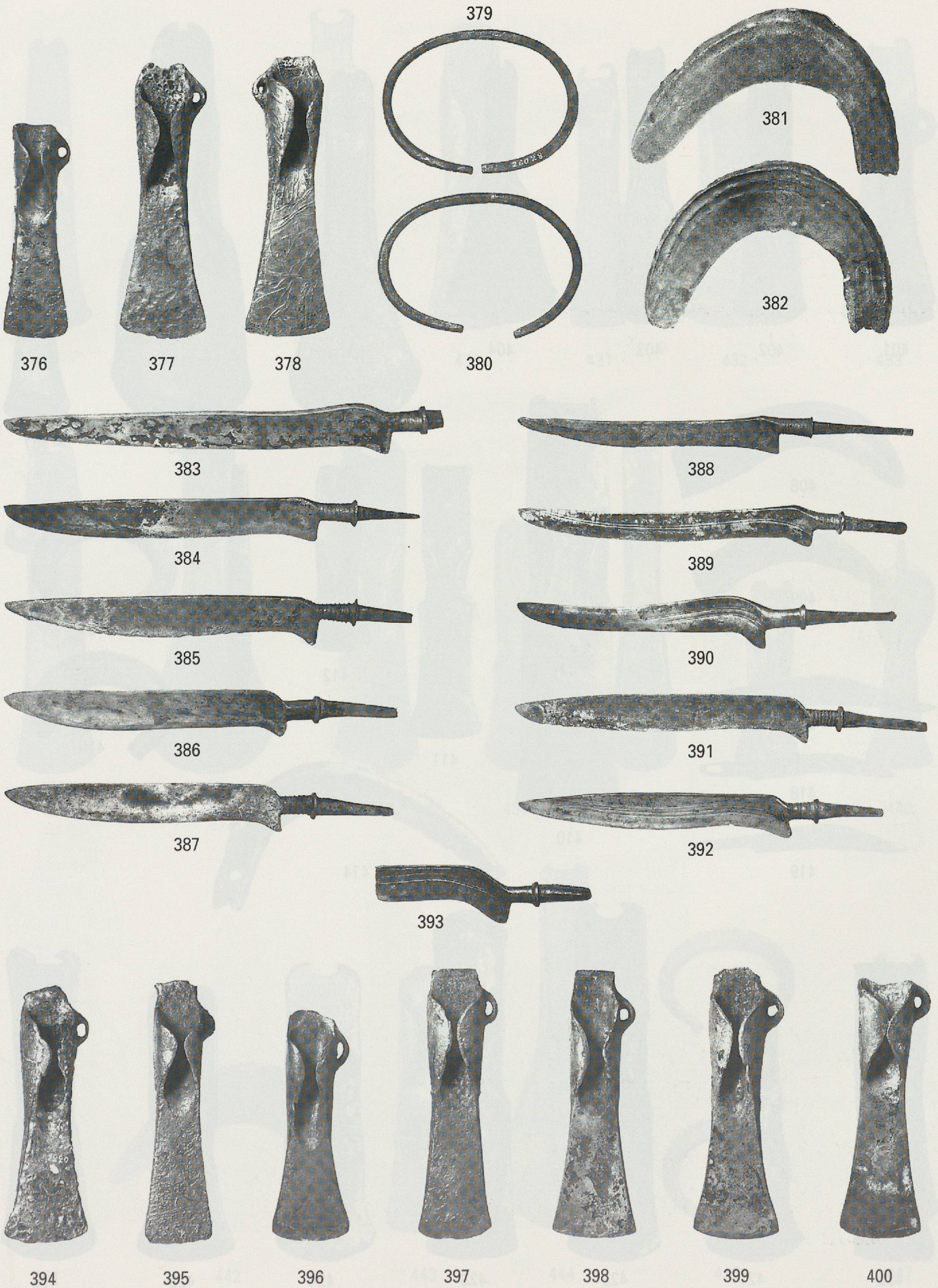


348

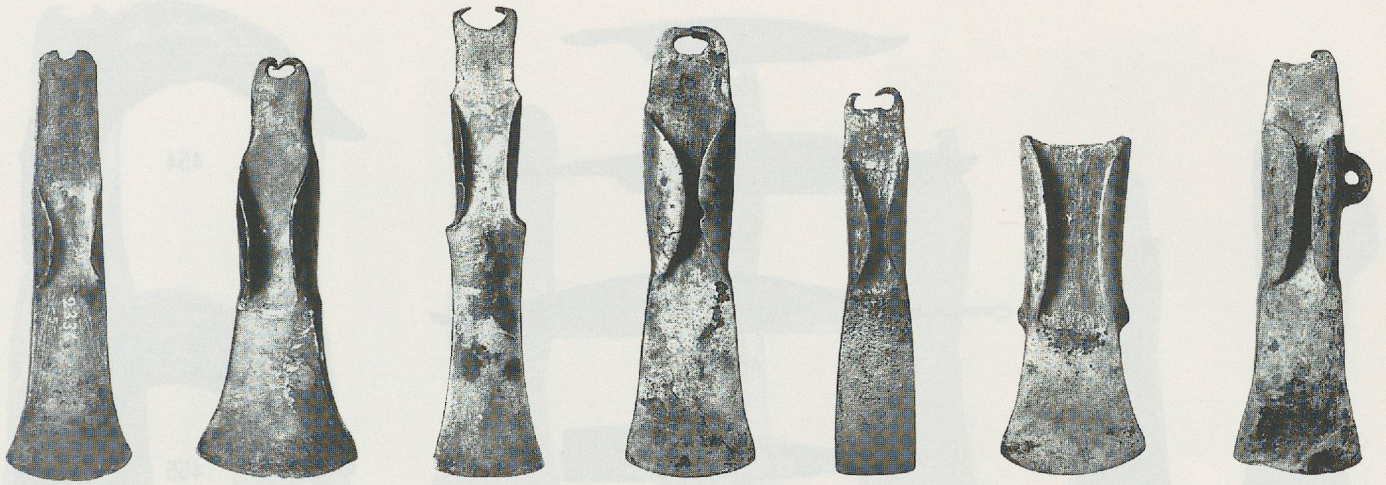


349









427

428

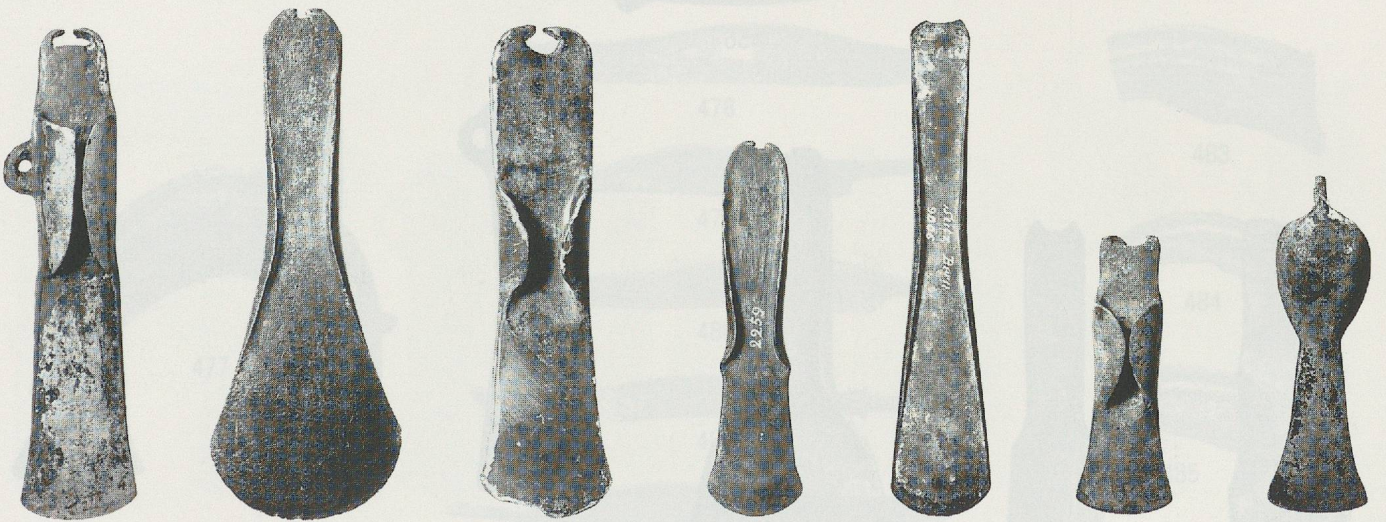
429

430

431

432

433



434

435

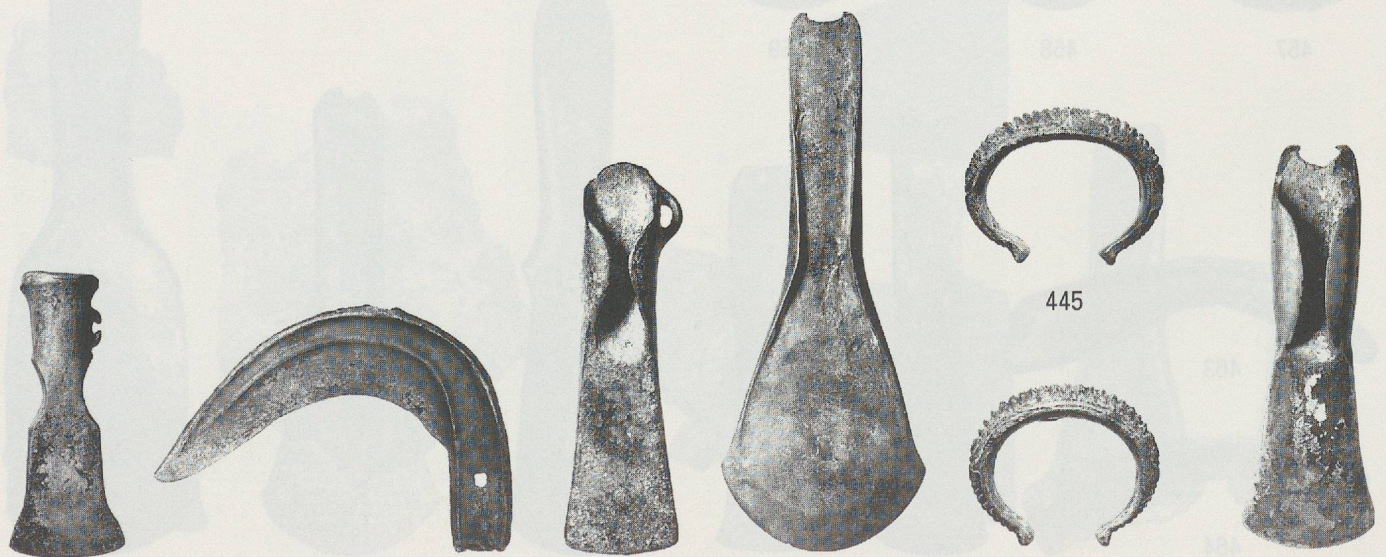
436

437

438

439

440



441

442

443

444

445

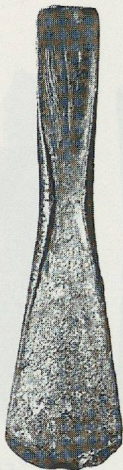
446

447





470



471



472



473



474



475



476



478



479



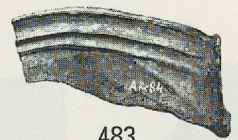
480



481



482



483



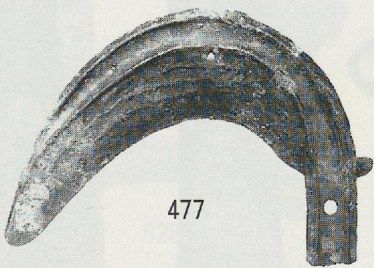
484



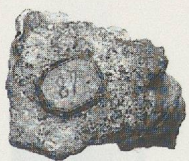
485



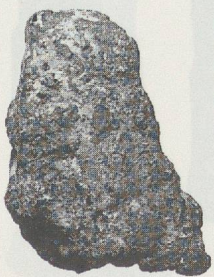
486



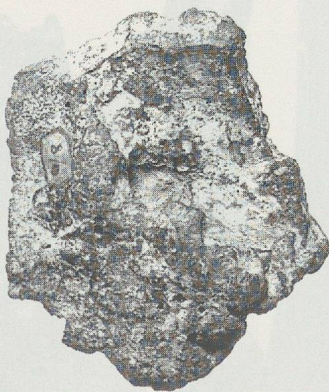
477



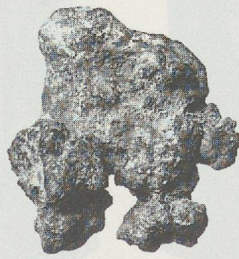
487



488



489



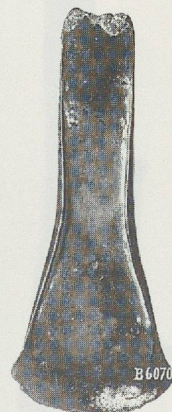
490



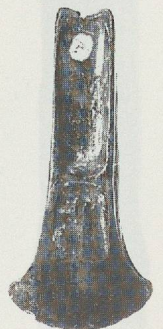
491



492



493



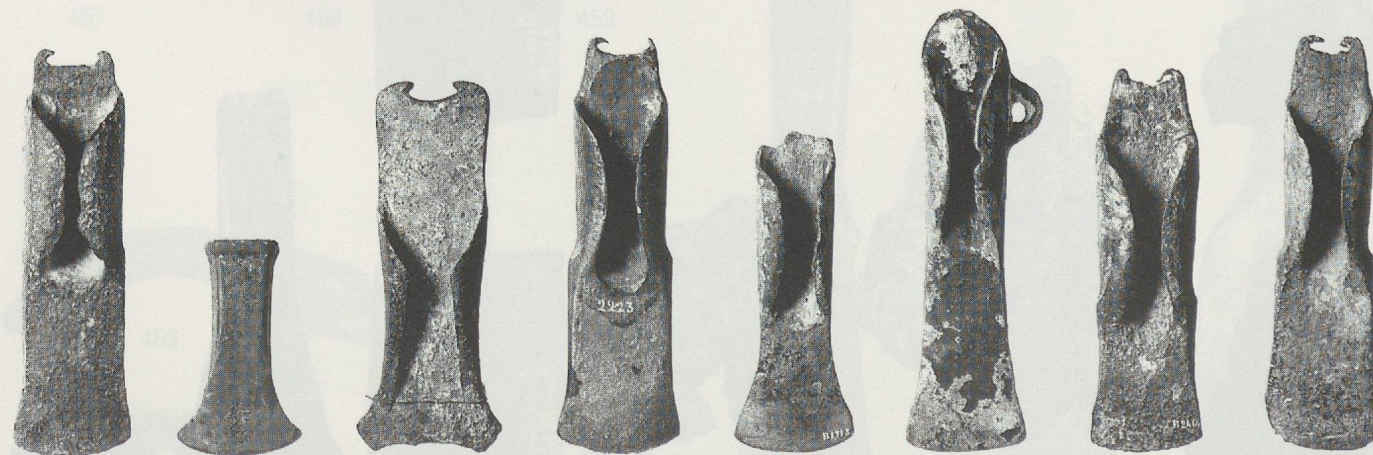
494



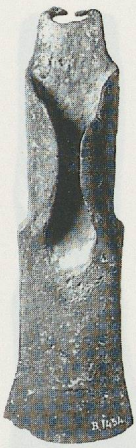
495 496 497 498 499 500 501 502



503 504 505 506 507 508 509 510



511 512 513 514 515 516 517 518



519



520



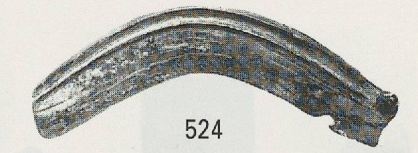
521



522



523



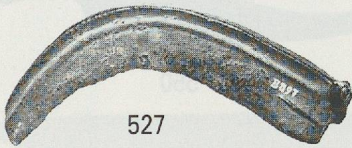
524



525



526



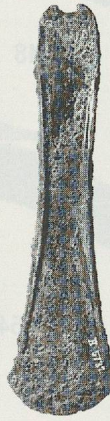
527



528



529



530



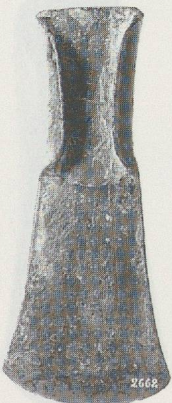
531



532



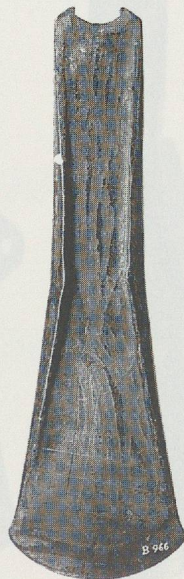
533



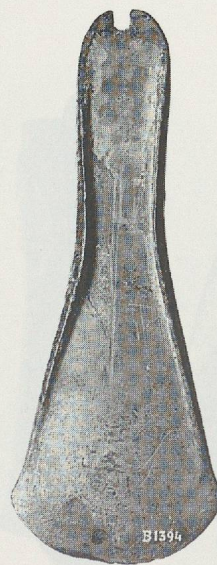
534



535



536



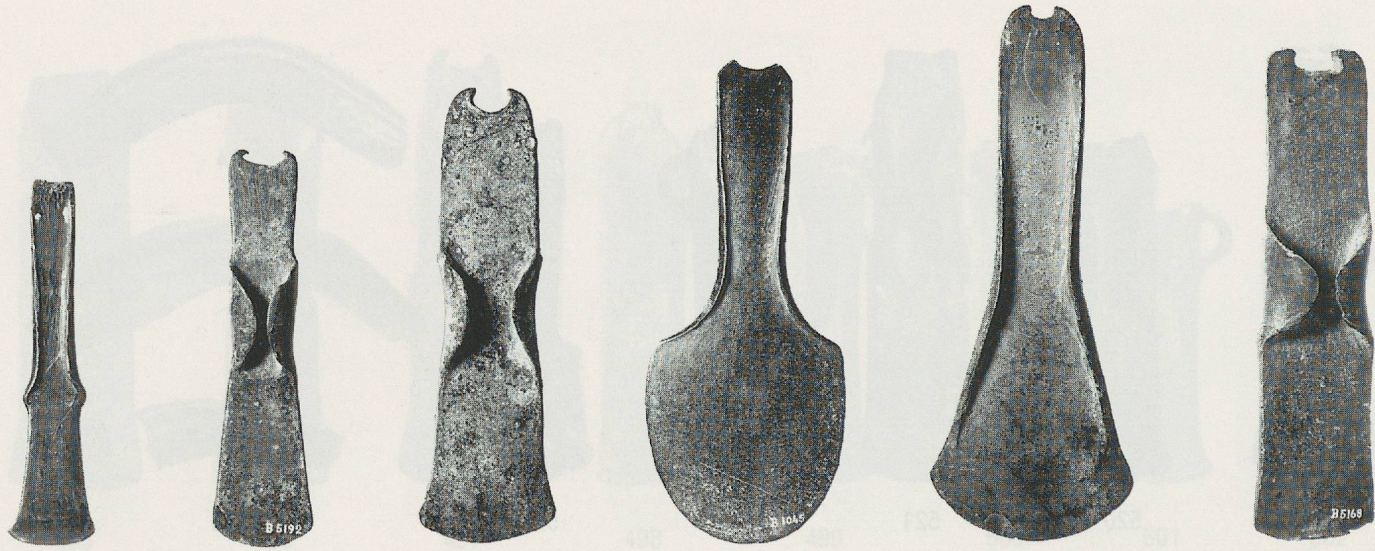
537



538



539



540

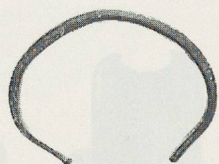
541

542

543

544

545



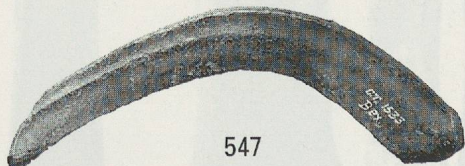
546



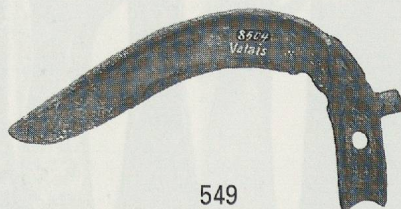
548



550



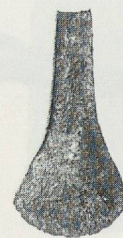
547



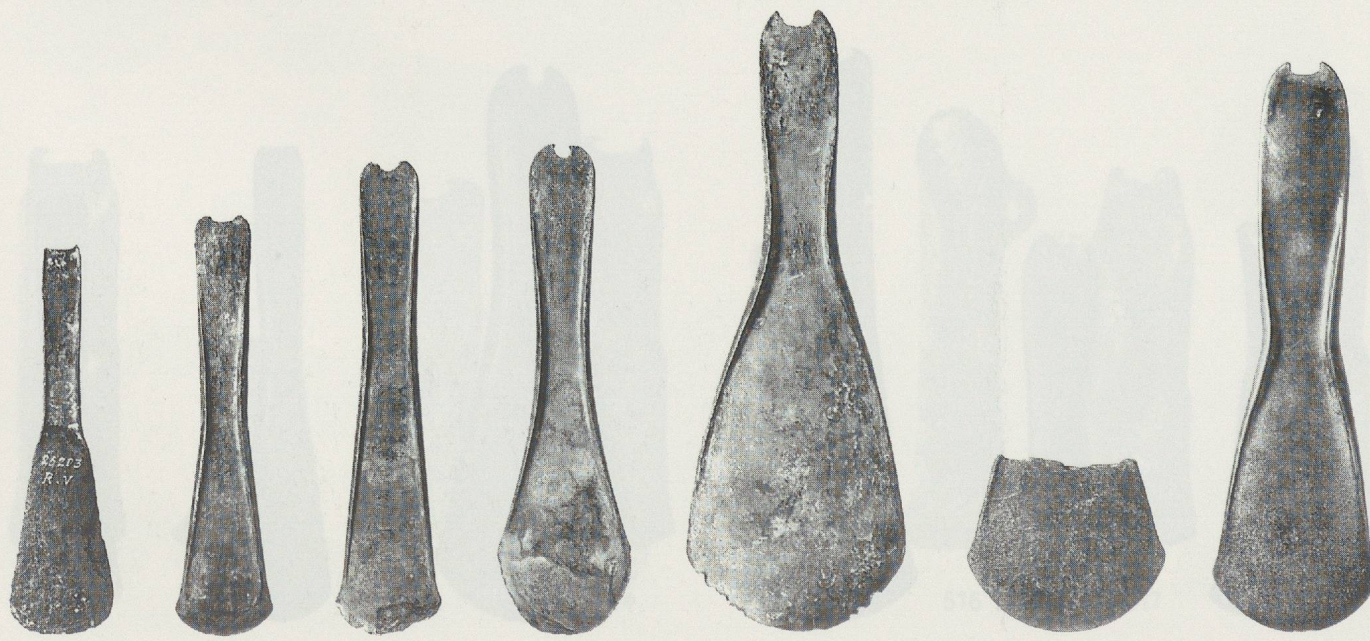
549



551



552



553

554

555

556

557

558

559



560



561



562



563



564



565



566



567



568



569



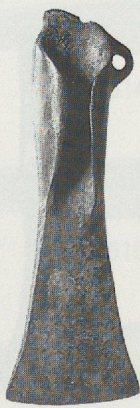
570



571



572



573



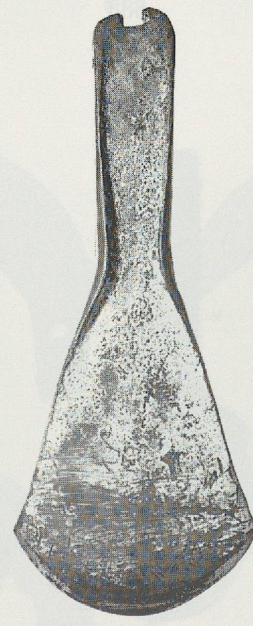
574



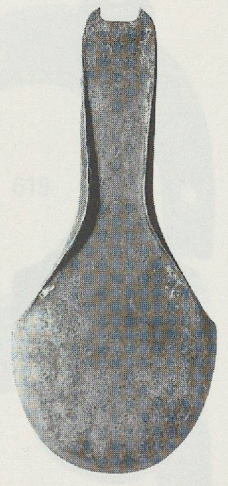
575



576



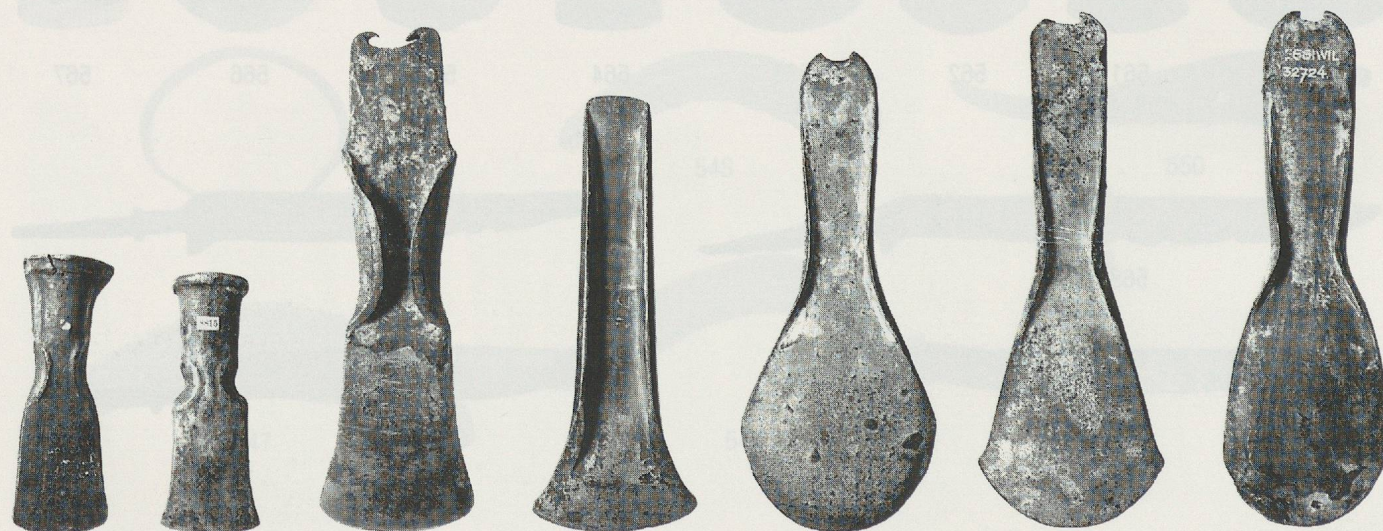
577



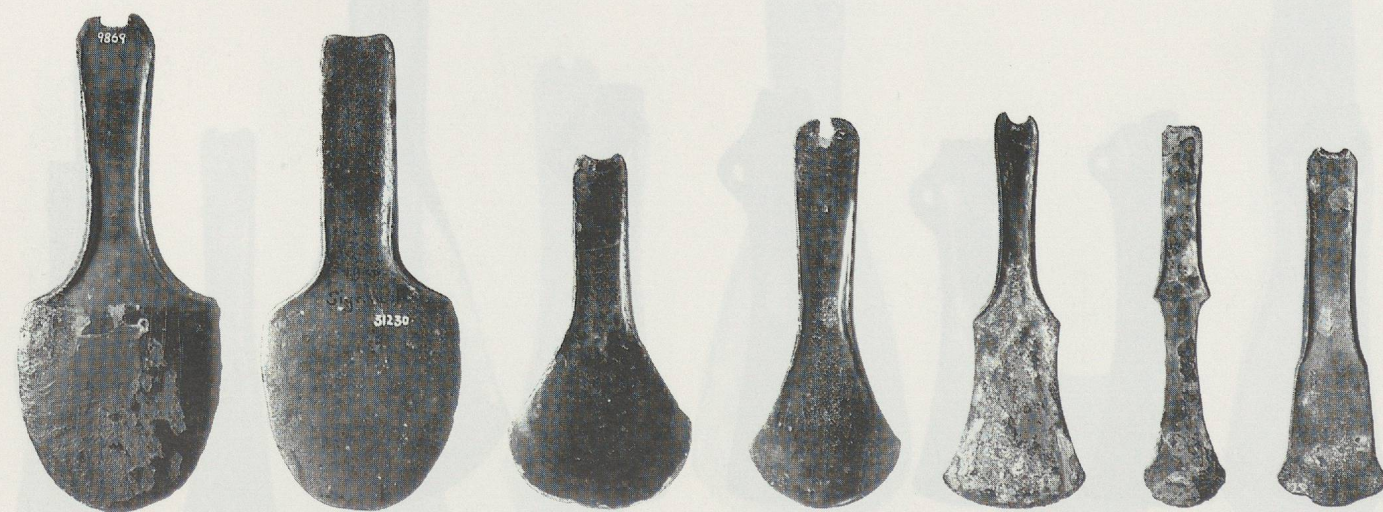
578



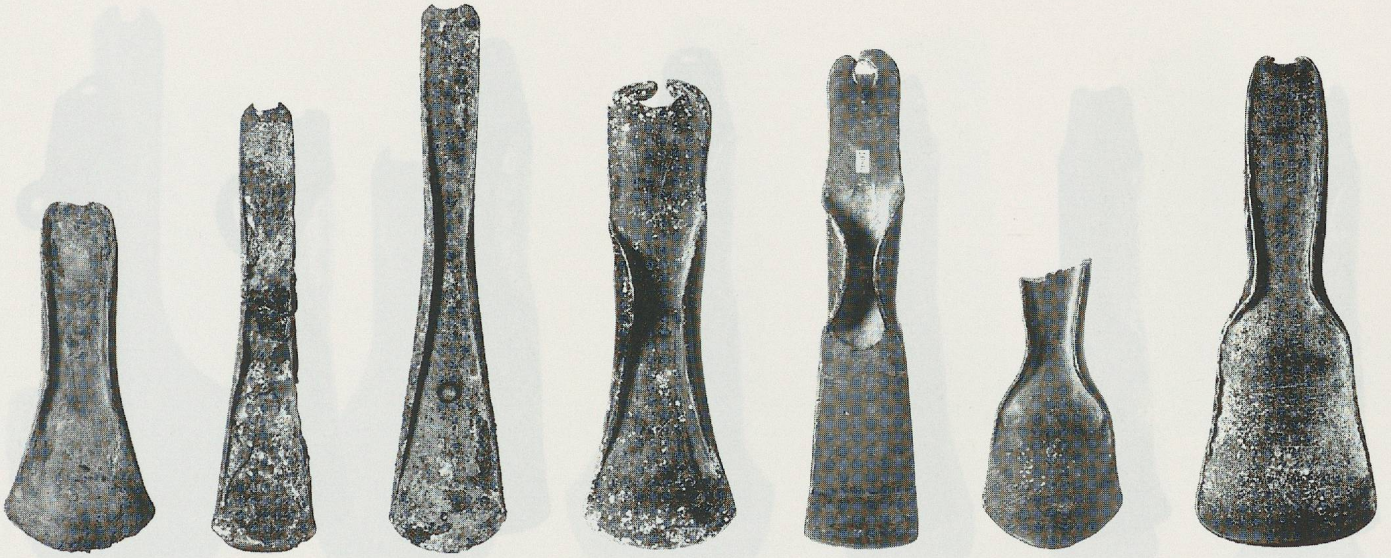
579 580 581 582 583 584 585



586 587 588 589 590 591 592



593 594 595 596 597 598 599



600

601

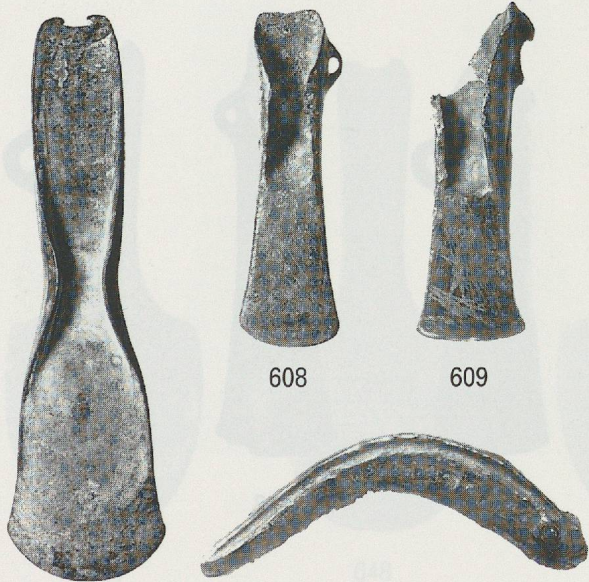
602

603

604

605

606



607

608

609

610



611



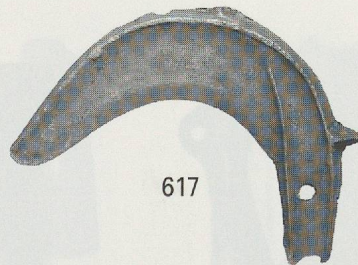
612



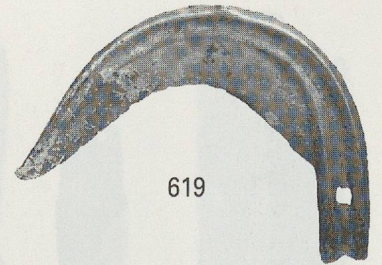
613



614



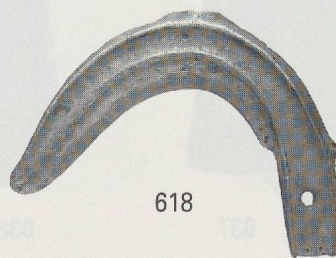
617



619



615



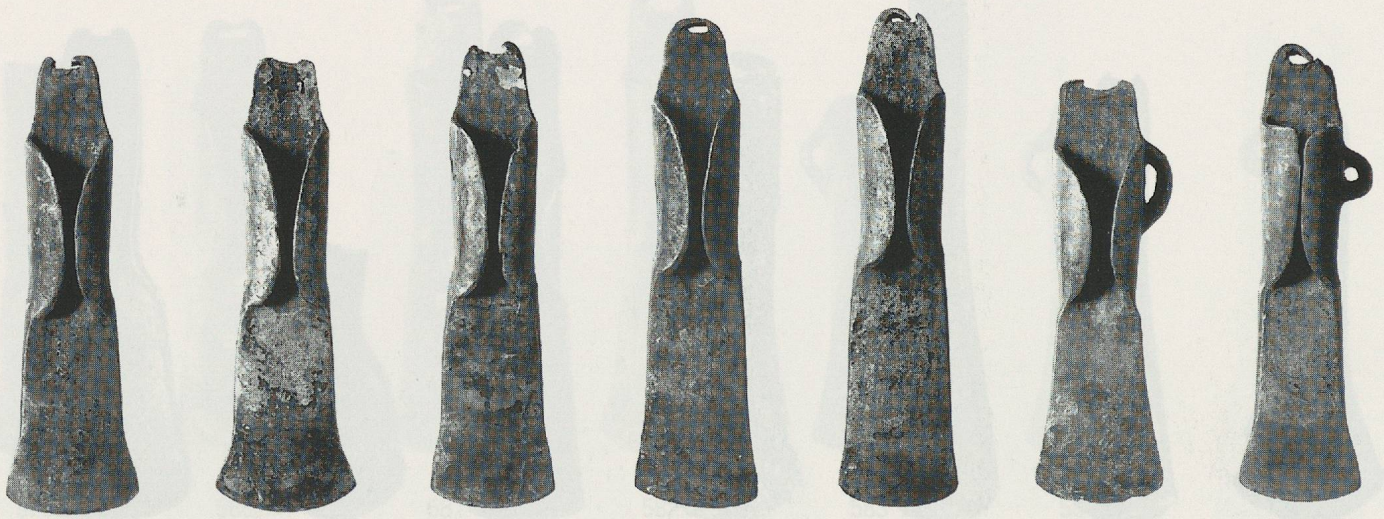
618



620



616



621

622

623

624

625

626

627



628

629

630

631

632

633

634



635

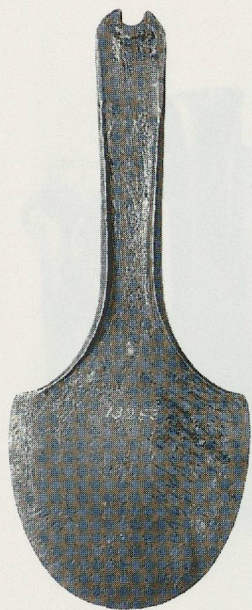
636

637

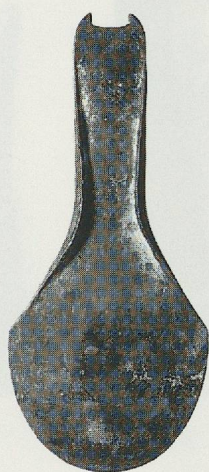
638

639

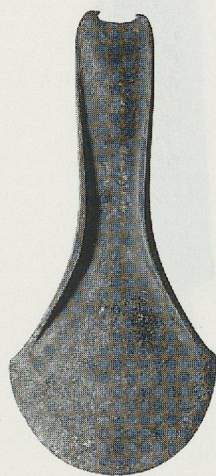
640



641



642



643



644



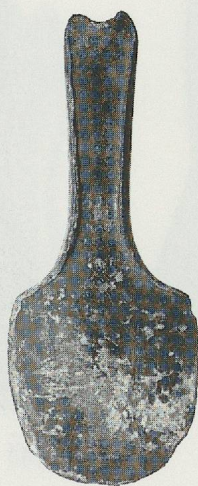
645



646



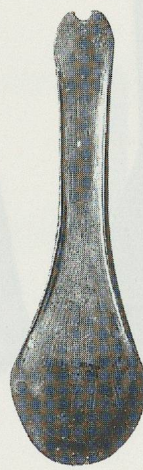
647



648



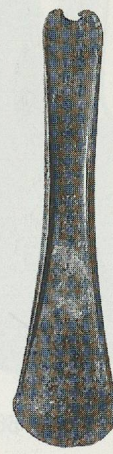
649



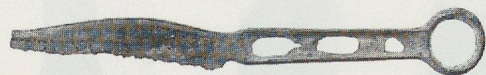
650



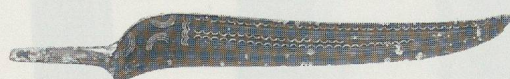
655



656



651



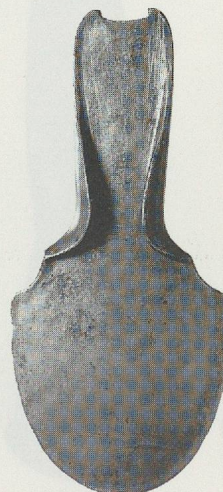
652



653



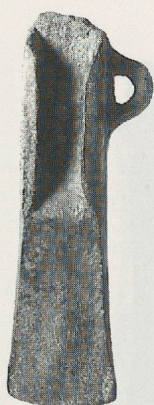
654



657



658



659



660



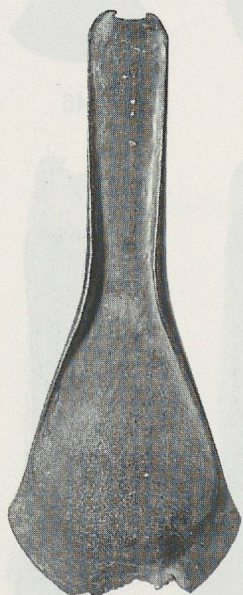
661



662



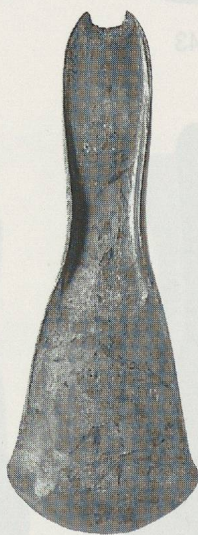
663



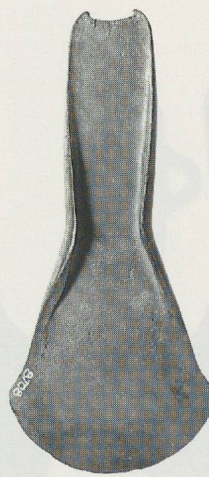
664



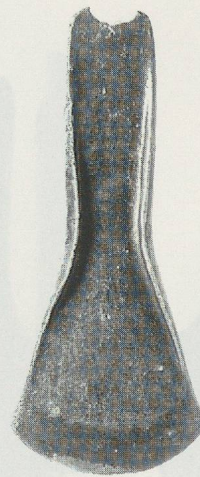
665



666



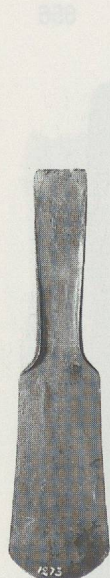
667



668



669



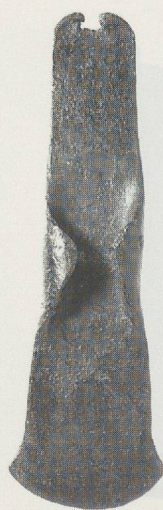
670



671



672



673



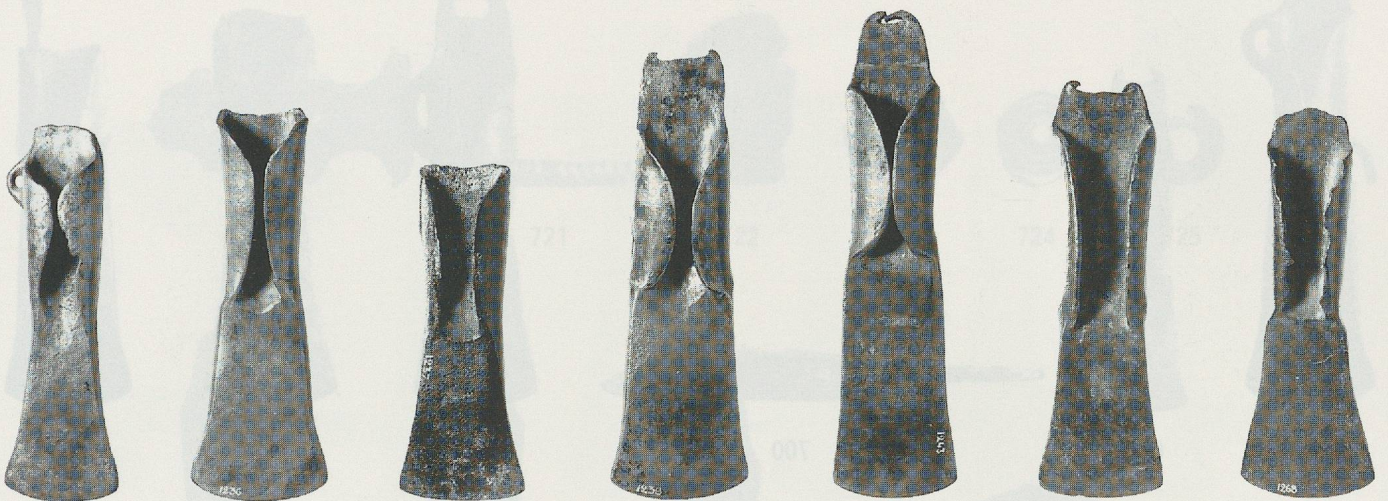
674



675



676



677

678

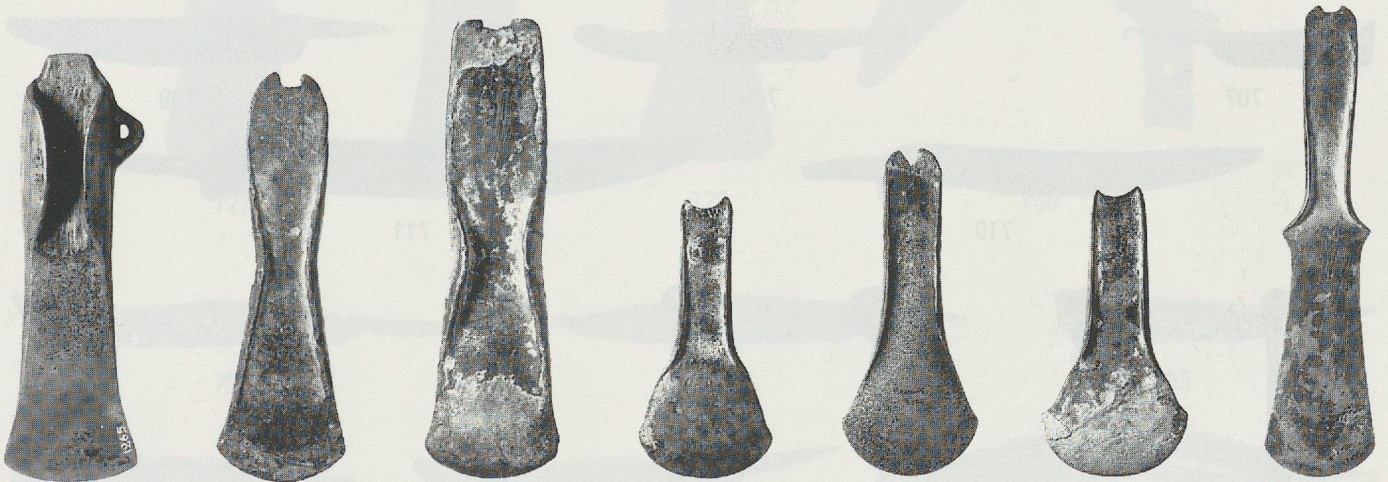
679

680

681

682

683



684

685

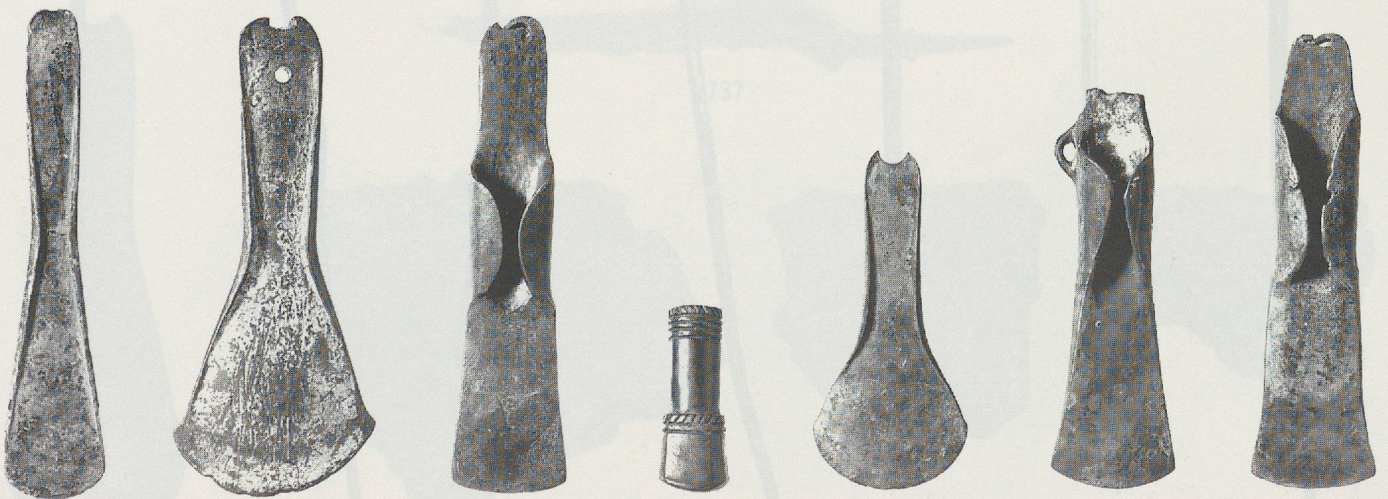
686

687

688

689

690



691

692

693

694

695

696

697



698



699



700



701



702



703



704



705



706



707



708



709



710



711



712



713



714



715



716



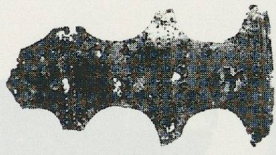
717



718



719



720



721



722



723



724



725



726



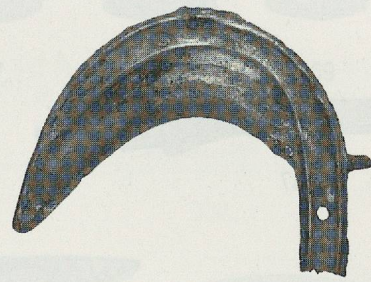
727



728



729



730



731



732



733



734



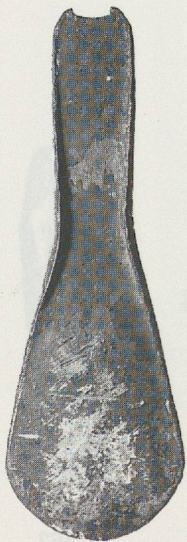
735



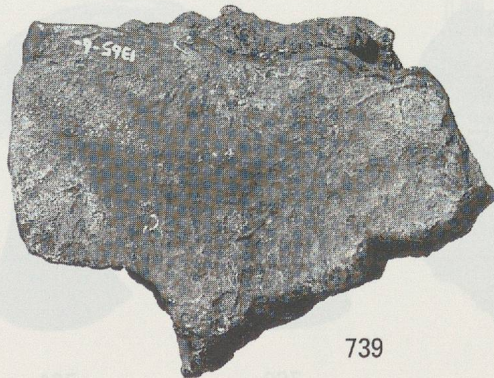
736



737



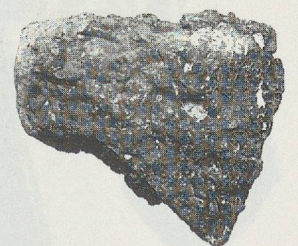
738



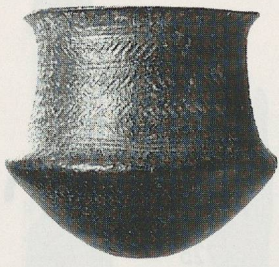
739



740



741



742



743



744



745



746



747



748



750



749



751



752



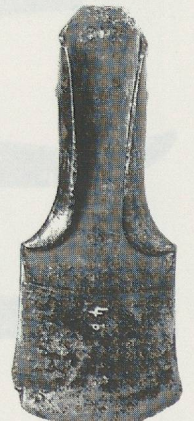
753



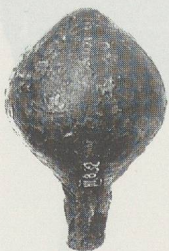
754



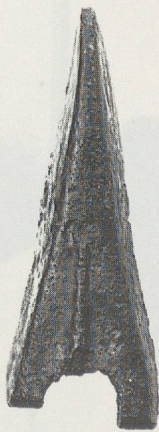
755



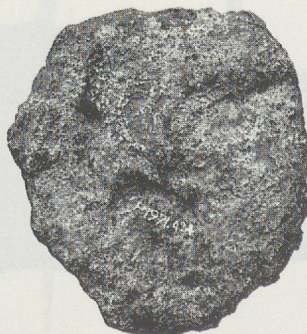
756



757



758



759



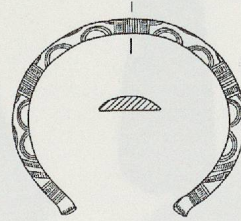
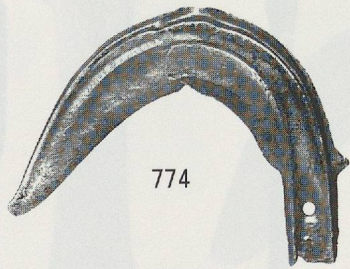
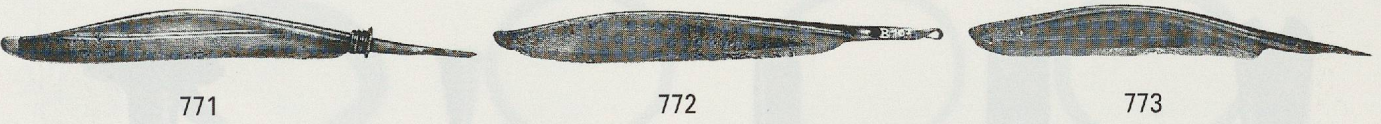
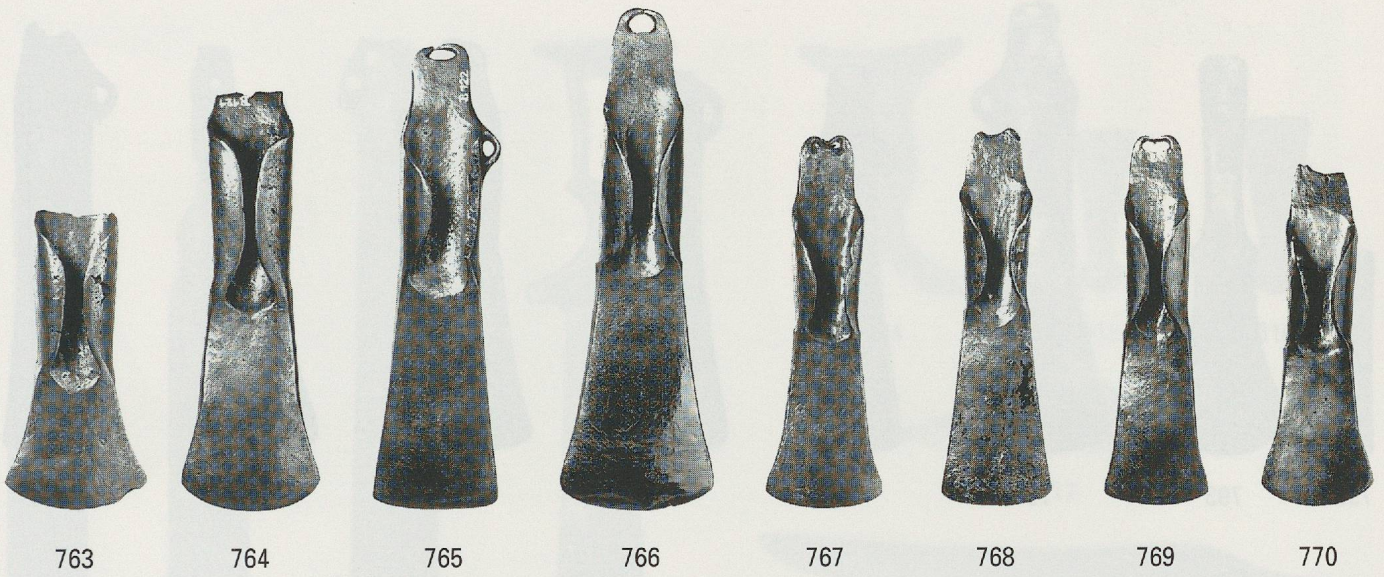
760



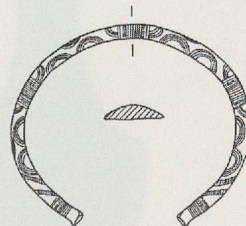
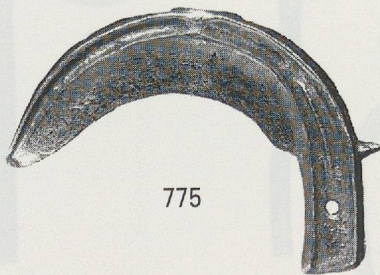
761



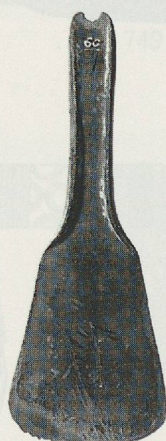
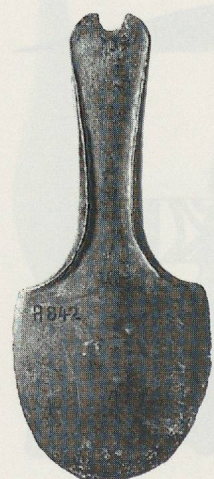
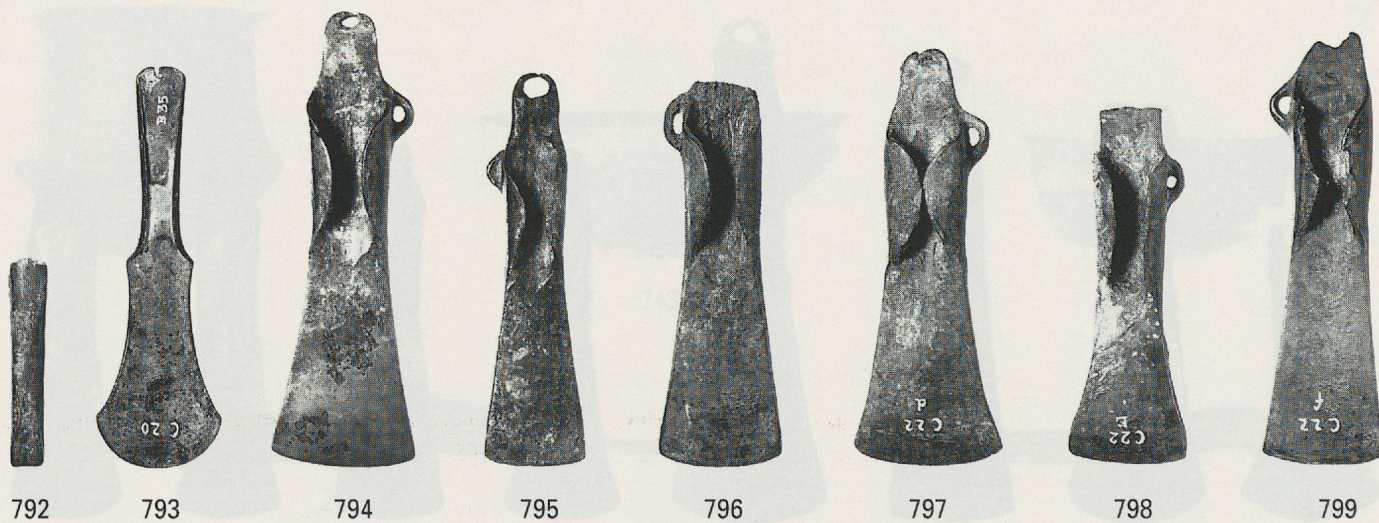
762



776-777, 780-781, 783, 786-790



778-779, 782, 784-785, 791



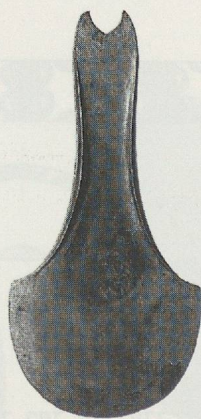
802

803

804



805



806



807



808



810



811



812



813



814



815



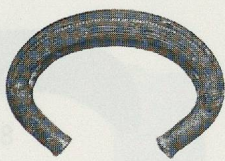
816



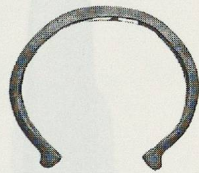
817



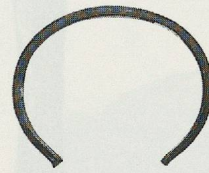
818



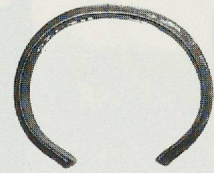
819



820



821



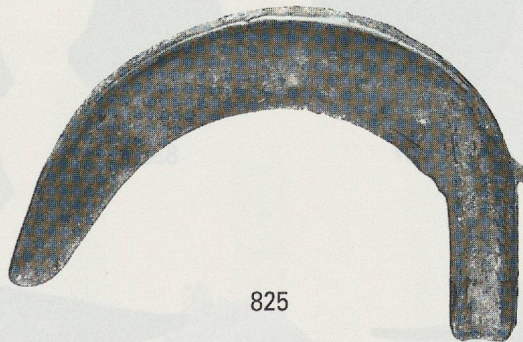
822



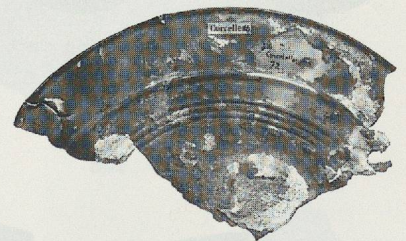
823



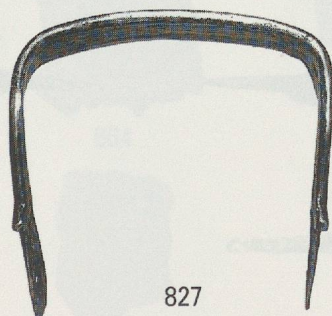
824



825



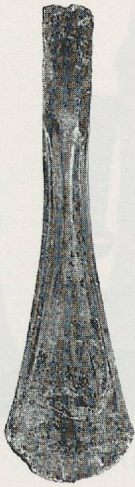
826



827



828



829



830



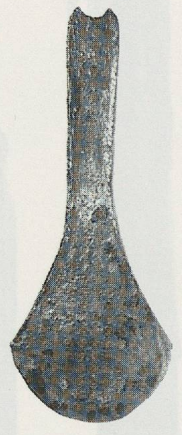
831



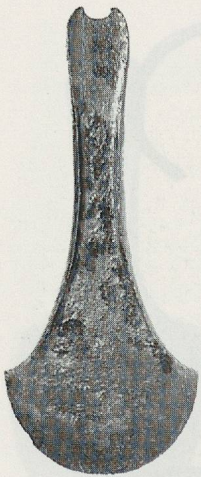
832



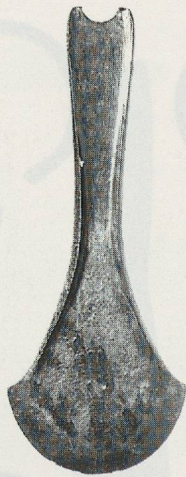
833



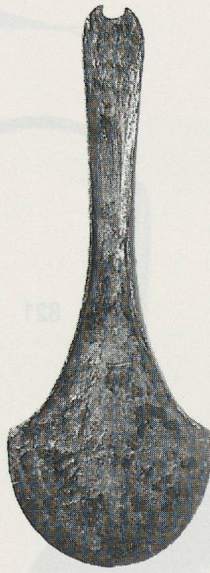
834



835



836



837



838



839



840



841



842



843



844



845



848



846



849



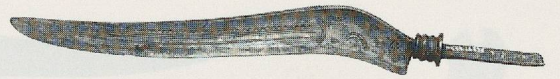
847



850



851



852



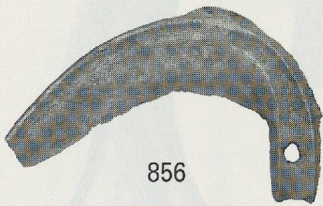
853



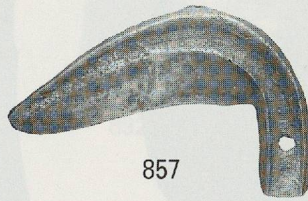
854



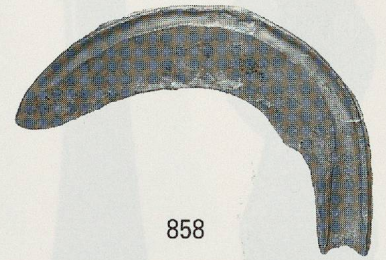
855



856



857



858



859



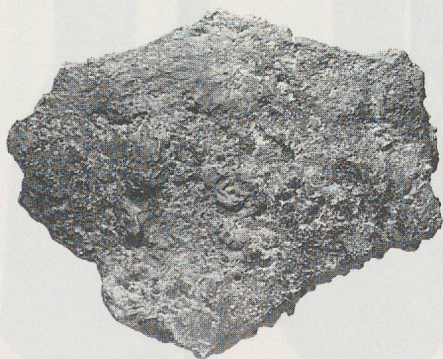
860



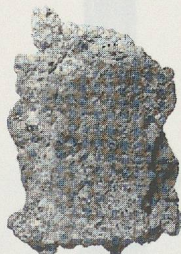
861



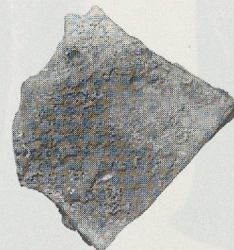
862



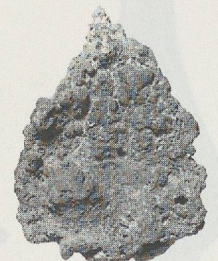
863



864



865



866



867



868



869



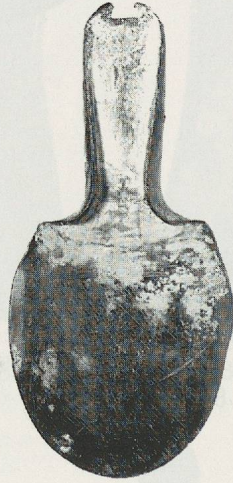
870



871



872



873



874



875



876



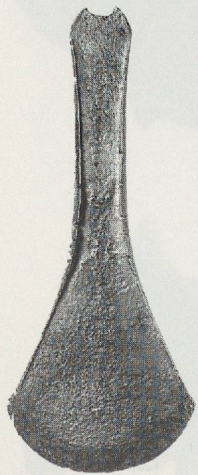
877



878



879



880



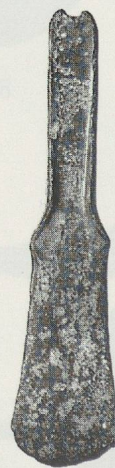
881



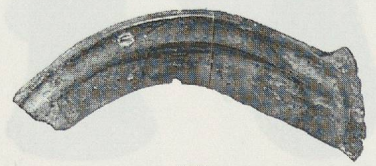
882



883



884



885



886



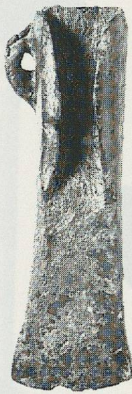
887



888



889



890



891



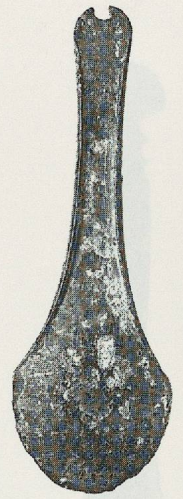
892



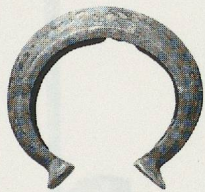
893



894



895



896



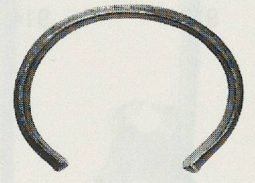
897



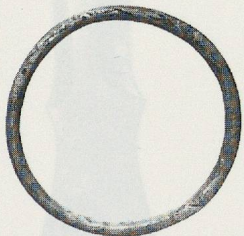
898



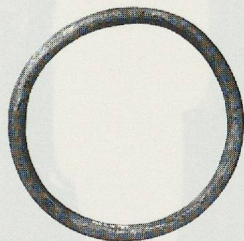
899



900



901



902



903



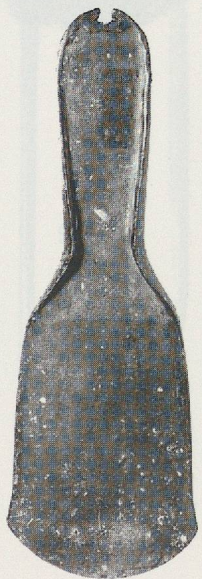
904



905



906



907



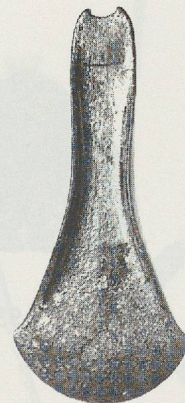
908



909



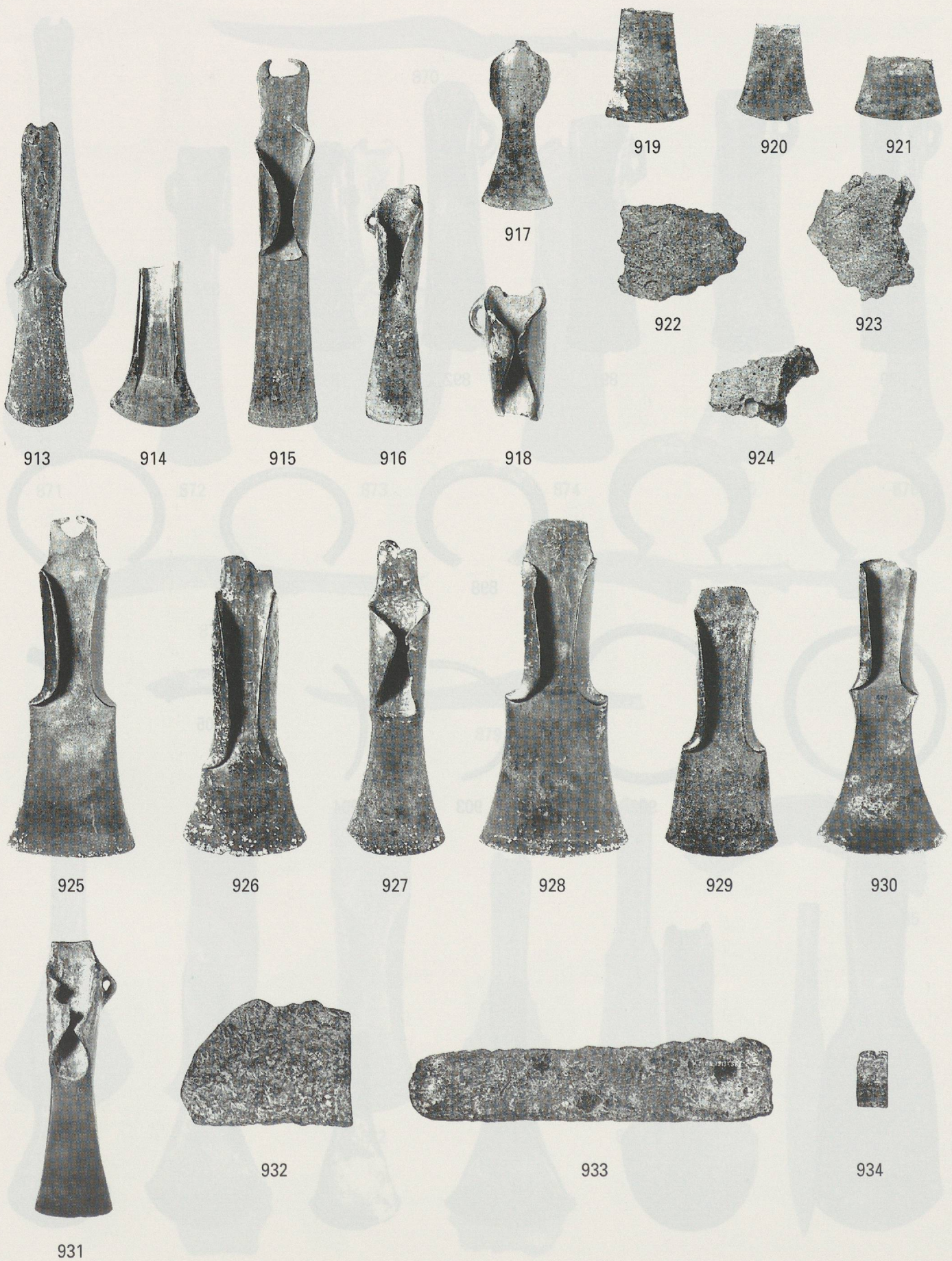
910



911



912





935



936



937



938



939



940



948



949



941



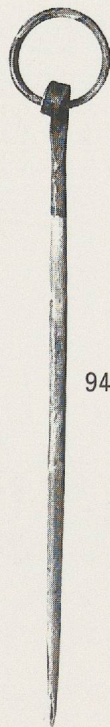
942



943



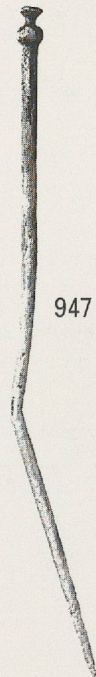
944



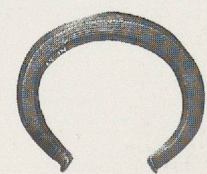
945



946



947



950