

Zeitschrift: Candollea : journal international de botanique systématique = international journal of systematic botany
Herausgeber: Conservatoire et Jardin botaniques de la Ville de Genève
Band: 62 (2007)
Heft: 1

Artikel: Typifications in the genus *Scleria* P. J. Bergius (Cyperaceae)
Autor: Dey, Sangita / Prasanna, P.V.
DOI: <https://doi.org/10.5169/seals-879163>

Nutzungsbedingungen

Die ETH-Bibliothek ist die Anbieterin der digitalisierten Zeitschriften auf E-Periodica. Sie besitzt keine Urheberrechte an den Zeitschriften und ist nicht verantwortlich für deren Inhalte. Die Rechte liegen in der Regel bei den Herausgebern beziehungsweise den externen Rechteinhabern. Das Veröffentlichen von Bildern in Print- und Online-Publikationen sowie auf Social Media-Kanälen oder Webseiten ist nur mit vorheriger Genehmigung der Rechteinhaber erlaubt. [Mehr erfahren](#)

Conditions d'utilisation

L'ETH Library est le fournisseur des revues numérisées. Elle ne détient aucun droit d'auteur sur les revues et n'est pas responsable de leur contenu. En règle générale, les droits sont détenus par les éditeurs ou les détenteurs de droits externes. La reproduction d'images dans des publications imprimées ou en ligne ainsi que sur des canaux de médias sociaux ou des sites web n'est autorisée qu'avec l'accord préalable des détenteurs des droits. [En savoir plus](#)

Terms of use

The ETH Library is the provider of the digitised journals. It does not own any copyrights to the journals and is not responsible for their content. The rights usually lie with the publishers or the external rights holders. Publishing images in print and online publications, as well as on social media channels or websites, is only permitted with the prior consent of the rights holders. [Find out more](#)

Download PDF: 24.04.2026

ETH-Bibliothek Zürich, E-Periodica, <https://www.e-periodica.ch>

Typifications in the genus *Scleria* P. J. Bergius (Cyperaceae)

Sangita Dey & P. V. Prasanna

Abstract

DEY, SANGITA & P. V. PRASANNA (2007). Typifications in the genus *Scleria* P. J. Bergius (Cyperaceae). *Candollea* 62: 53-59. In English, English and French abstracts.

Five species of *Scleria* P. J. Bergius (Cyperaceae), namely *Scleria stocksiana* Boeck., *Scleria annularis* Steud., *Scleria scrobiculata* Nees & Meyen, *Scleria biflora* Roxb. and *Scleria motleyi* C. B. Clarke, are lectotypified as a part of the current revision of this genus for India.

Key-words

CYPERACEAE – *Scleria* – Lectotypification

Résumé

DEY, SANGITA & P. V. PRASANNA (2007). Typifications dans le genre *Scleria* P. J. Bergius (Cyperaceae). *Candollea* 62: 53-59. En anglais, résumés anglais et français.

Cinq espèces du genre *Scleria* P. J. Bergius (Cyperaceae), soit *Scleria stocksiana* Boeck., *Scleria annularis* Steud., *Scleria scrobiculata* Nees & Meyen, *Scleria biflora* Roxb. et *Scleria motleyi* C. B. Clarke, sont lectotypifiées dans le cadre de la révision du genre pour l'Inde.

Adresse of the authors: Central National Herbarium, Botanical Survey of India, Howrah-711103, India. Author for correspondence: SD, email: sangita456@vsnl.net
Submitted on September 24, 2006. Accepted on April 24, 2007.

Typifications of Asiatic taxa in the genus *Scleria* P. J. Bergius have been dealt in detail by KERN (1961). However, a current revision of *Scleria* for India has revealed that the following five species require further clarification regarding their typification.

Scleria stocksiana Boeck. in *Linnaea* 38: 474. 1874.

Protologue: “Sub ‘*S. tessellata* Nees’ in Herb. Ind. Or. Hook. et Thomson. Malabar, Concan (Stocks, Law etc.)”.

Holotype: B [destroyed].

Lectotype (here designated): “Malabar, Concan, etc.”, s.d., *s.coll. s.n.* (K, K000357567; isolecto-: CAL!) (Fig. 1).

The K specimen of *S. stocksiana* with mature nutlets has been chosen as the lectotype in place of the material formerly in B which was destroyed during the Second World War (R. Vogt, pers. comm., 2005).

Scleria annularis Steud., *Syn. Pl. Glum.* 2: 176. 1855.

Protologue: “Ind. or.”.

Lectotype (here designated): “Canara & Mysore”, s.d., *Law s.n.* (K, K000357564; isolecto-: CAL!) (Fig. 2).

STEUDEL (1855) did not cite any specimen. BOECKELER (1874: 457) wrote: “Hook. et Thoms. hb. Ind. or. (sub: Hypopor. Roxburghii Nees)”, while describing this species. KERN (1961: 200) quotes the same specimen that of Boeckeler and mentions it is at P. Efforts to find the type specimen at P were futile even after a thorough search (S. Hul, pers. comm., 2006). However, we examined one specimen labelled as above at K, which could have been erroneously mentioned to be present at P by Kern. To avoid further confusion the K specimen is now designated as lectotype.

Scleria biflora Roxb., *Fl. Ind. ed.* 2, 3: 573. 1832.

Protologue: “A native of Bengal”.

Lectotype (here designated): “India orientalis”, s.d., *Roxburgh s.n.* (BM, BM000884995, the central plant) (Fig. 3).

The BM specimen of *S. biflora* has 2 plants mounted on one sheet. *Specimen 1* (single plant on extreme left, BM000884994) is *Wallich 3405 B* collected from “lower Bengal” in 1815 and *Specimen 2* (single plant in the middle, BM000884995) from “India Orientalis” is associated with Roxburgh. KERN (1961: 197) cited these specimens as types of *S. biflora*. We follow his opinion but to further clarify matters we designate only *Specimen 2* as the lectotype of *S. biflora*. Since Roxburgh died in Edinburgh in 1815, *Specimen 1* from lower Bengal could not be considered as typical material of *S. biflora*, rather it seems that it is a later addition on the sheet because of its origin.

Scleria motleyi C. B. Clarke in *Philipp. J. Sci.*, C 2: 104. 1907.

Protologue: “In hb. Kew, ms. in Motley 72, 74, 152”.

Lectotype (here designated): “Borneo”, s.d., *Motley 74* (K, K000291166) (Fig. 4).

The specimen *Motley 74* in K was annotated by C. B. Clarke as ‘type of species’. It is well preserved with mature nutlets and also bears an analysis drawn by Clarke. It is therefore the most appropriate choice as lectotype.

Scleria scrobiculata Nees & Meyen in *Wight, Contr. Bot. India*: 117. 1834.

Protologue: “In Manila; Meyen. In insula Rawack; Gaudichaud”.

Lectotype (here designated): “Iles Moluques, Rawak”, s.d., *Gaudichaud s.n.* (P, P00492813; isolecto-: FI) (Fig. 5).

The specimen collected by Gaudichaud from Rawak in P is annotated by Kern as ‘probably type collection’ and given that the other syntype collected by Meyen from Manila is destroyed (STAFLEU & COWAN, 1981; VAN STEENIS-KRAUSMAN, 1950), specimen P00492813 is the appropriate choice as lectotype. Another specimen of *S. scrobiculata* deposited in P (P00492814, collected from Manila in 1836-37) cannot be considered as type as it was collected after 1834.

Acknowledgements

Authors express their sincere gratitude to Dr. M. Sanjappa, Director, B.S.I. and to Dr. H. J. Chowdhery, Joint Director, CNH for facilities and encouragement. We thank Dr. P. Lakshminarasimhan, former IBLO, Dr. S. K. Srivastava, IBLO and curators of BM, BR, CAS, CGE and P for images of type specimens. We gratefully acknowledge the Board of Trustees of RBG, Kew and the curators of P and BM for providing permissions for publication of the photographs. We also thank Dr. Robert Vogt (B) for providing information about the type of *S. stocksiana* and Dr. Sovanmoly Hul (P) for searching the type of *S. annularis*.

References

- BOECKELER, O. (1874). Die Cyperaceen des Koeniglichen Herbariums Zu Berlin. *Linnaea* 38: 223-544.
- KERN, J. H. (1961). Florae Malesianae Precursores XXX. The genus *Scleria* in Malaysia. *Blumea* 11: 140-218.
- STAFLEU, F. A. & R. S. COWAN (1981). Taxonomic literature 3. Lh-O. *Regnum Veg.* 105: 438.
- STEUDEL, E. G. (1854-55). *Synopsis Plantarum Glumacearum 2. Synopsis plantarum cyperacearum*: 81-348.
- VAN STEENIS-KRAUSMAN, M. J. (1950). Meyen. In: VAN STEENIS, C. G. G. J. (ed.), *Fl. Males.* I, 1: 358.

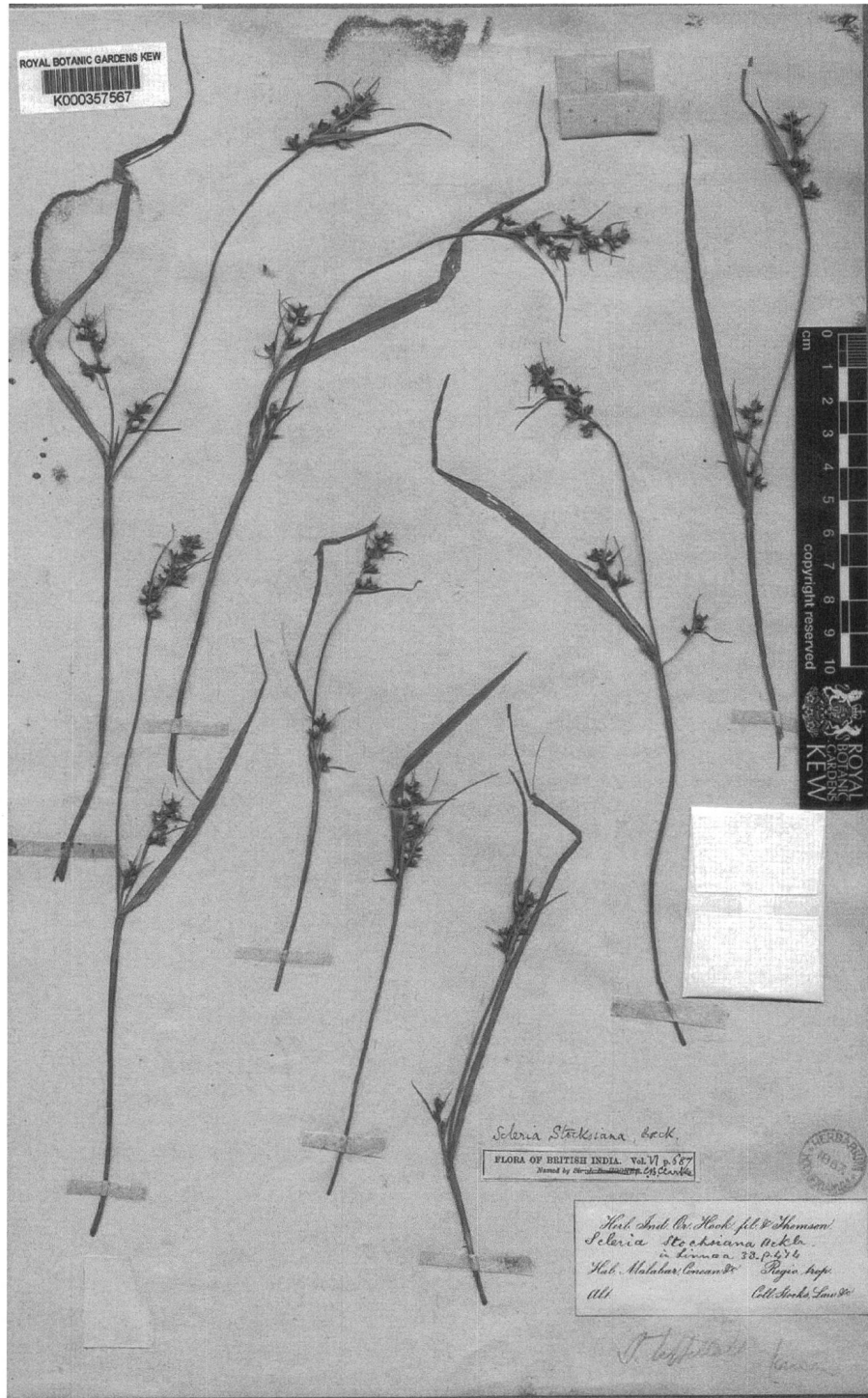


Fig. 1. – Lectotype of *Scleria stocksiana* Boeck.

[s.coll. s.n., K] [© The Board of Trustees of the Royal Botanic Gardens, Kew. Reproduced with permission]

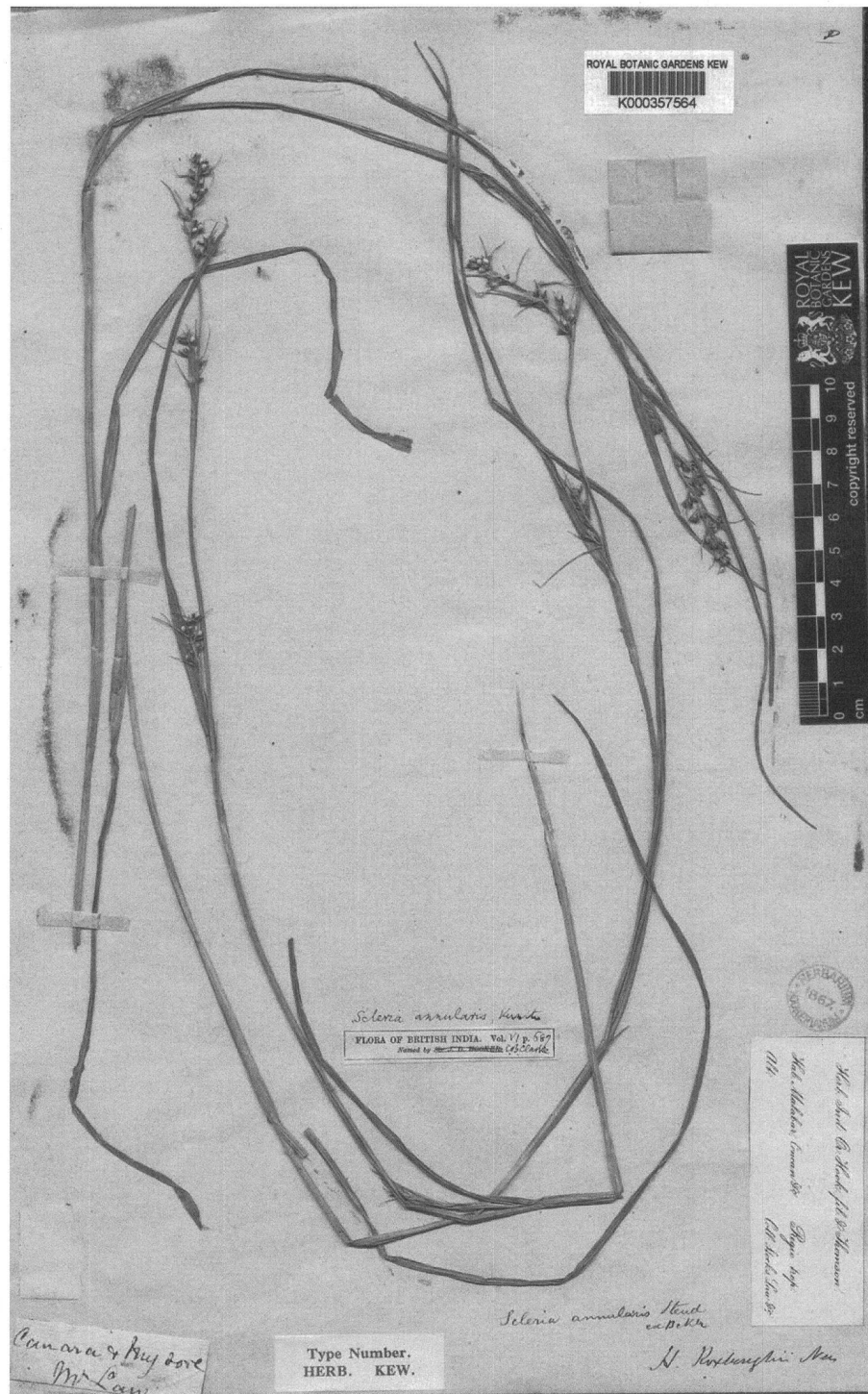


Fig. 2. – Lectotype of *Scleria annularis* Steud.

[Law s.n., K] [© The Board of Trustees of the Royal Botanic Gardens, Kew. Reproduced with permission]

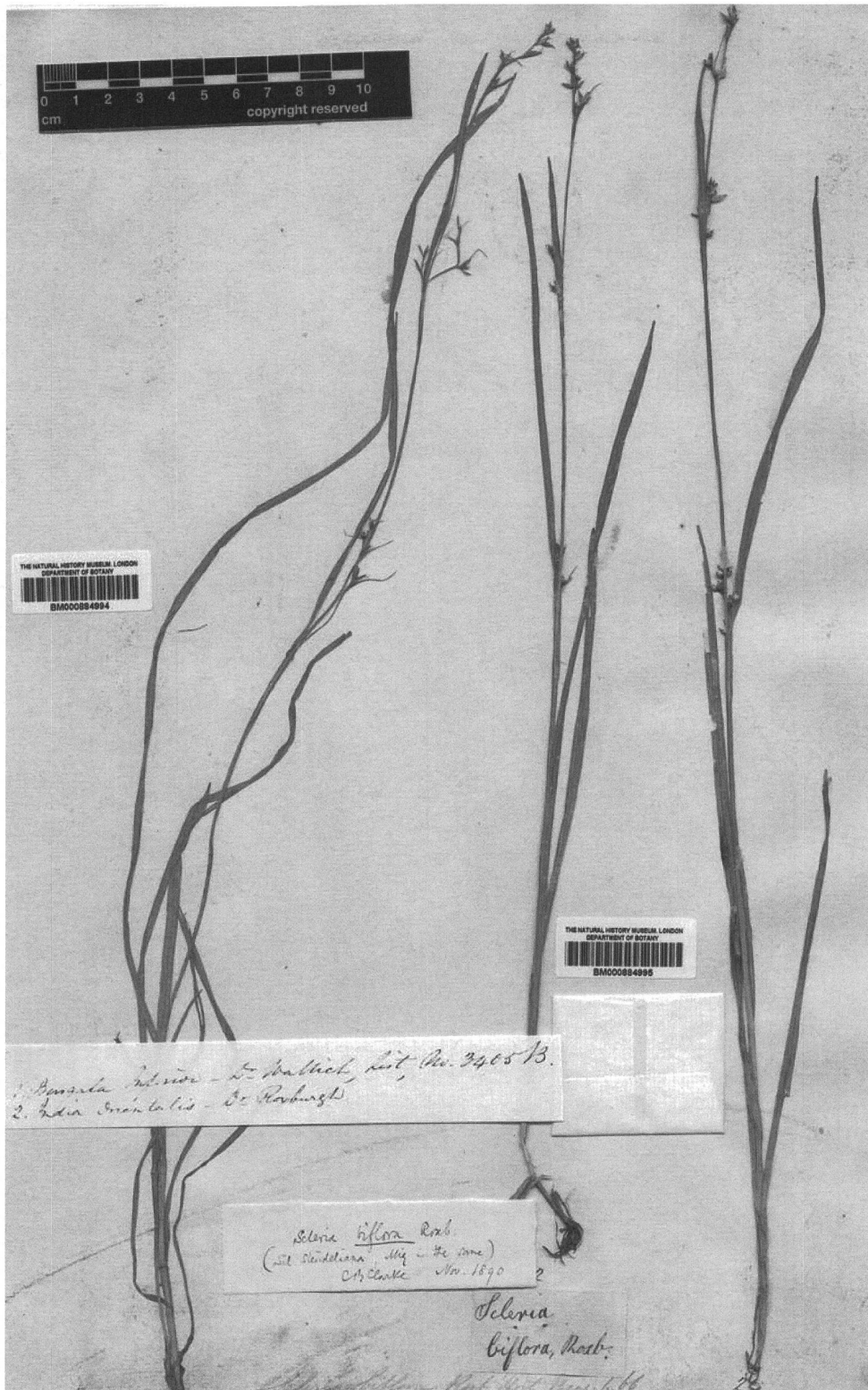


Fig. 3. – Lectotype of *Scleria biflora* Roxb.

[Roxburgh s.n., BM] [© The Natural History Museum, London. Reproduced with permission]

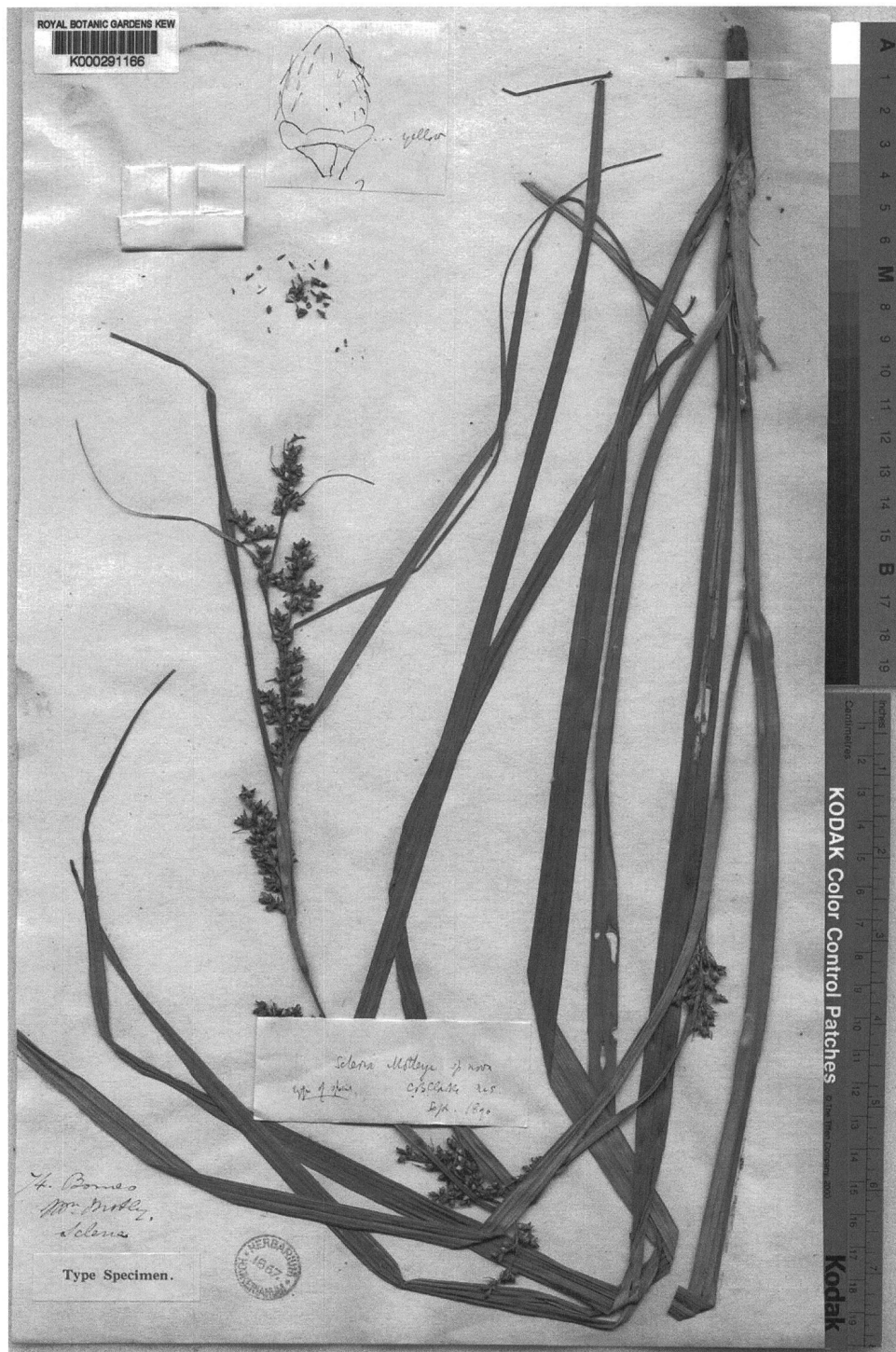


Fig. 4. – Lectotype of *Scleria motleyi* C. B. Clarke.

[Motley 74, K] [© The Board of Trustees of the Royal Botanic Gardens, Kew. Reproduced with permission]



Fig. 5. – Lectotype of *Scleria scrobiculata* Nees & Meyen.

[Gaudichaud s.n., P] [© Muséum National d'Histoire Naturelle, Paris. Reproduced with permission]

