

Zeitschrift: Candollea : journal international de botanique systématique = international journal of systematic botany
Herausgeber: Conservatoire et Jardin botaniques de la Ville de Genève
Band: 50 (1995)
Heft: 1

Artikel: Seven new species for the Flora of Turkey
Autor: Gemici, Yusuf / Leblebici, Erkuter
DOI: <https://doi.org/10.5169/seals-879457>

Nutzungsbedingungen

Die ETH-Bibliothek ist die Anbieterin der digitalisierten Zeitschriften auf E-Periodica. Sie besitzt keine Urheberrechte an den Zeitschriften und ist nicht verantwortlich für deren Inhalte. Die Rechte liegen in der Regel bei den Herausgebern beziehungsweise den externen Rechteinhabern. Das Veröffentlichen von Bildern in Print- und Online-Publikationen sowie auf Social Media-Kanälen oder Webseiten ist nur mit vorheriger Genehmigung der Rechteinhaber erlaubt. [Mehr erfahren](#)

Conditions d'utilisation

L'ETH Library est le fournisseur des revues numérisées. Elle ne détient aucun droit d'auteur sur les revues et n'est pas responsable de leur contenu. En règle générale, les droits sont détenus par les éditeurs ou les détenteurs de droits externes. La reproduction d'images dans des publications imprimées ou en ligne ainsi que sur des canaux de médias sociaux ou des sites web n'est autorisée qu'avec l'accord préalable des détenteurs des droits. [En savoir plus](#)

Terms of use

The ETH Library is the provider of the digitised journals. It does not own any copyrights to the journals and is not responsible for their content. The rights usually lie with the publishers or the external rights holders. Publishing images in print and online publications, as well as on social media channels or websites, is only permitted with the prior consent of the rights holders. [Find out more](#)

Download PDF: 29.04.2026

ETH-Bibliothek Zürich, E-Periodica, <https://www.e-periodica.ch>

Seven new species for the Flora of Turkey

YUSUF GEMICI
&
ERKUTER LEBLEBICI

RÉSUMÉ

GEMICI, Y. & E. LEBLEBICI (1995). Sept espèces nouvelles pour la Flore de Turquie. *Candollea* 50: 41-50. En anglais, résumés français et anglais.

Sept nouvelles espèces pour la Flore de Turquie sont décrites: *Aethionema acarii*, *Thlaspi leblebicii* (Brassicaceae), *Dianthus akdaghensis* (Caryophyllaceae), *Hypericum kazdaghensis* (Hypericaceae), *Erodium olympicum* (Geraniaceae), *Ballota sechmenii* et *Nepeta anamurensis* (Lamiaceae).

ABSTRACT

GEMICI, Y. & E. LEBLEBICI (1995). Seven new species for the Flora of Turkey. *Candollea* 50: 41-50. In English, French and English abstracts.

Seven new species are described for the Flora of Turkey: *Aethionema acarii*, *Thlaspi leblebicii* (Brassicaceae), *Dianthus akdaghensis* (Caryophyllaceae), *Hypericum kazdaghensis* (Hypericaceae), *Erodium olympicum* (Geraniaceae), *Ballota sechmenii* and *Nepeta anamurensis* (Lamiaceae).

KEY-WORDS: Turkey — Taxonomy — *Aethionema* — *Thlaspi* — *Dianthus* — *Hypericum* — *Erodium* — *Ballota* — *Nepeta*.

Brassicaceae

***Aethionema acarii* Gemici & Leblebici, spec. nov.** (Fig. 1).

Type: B2 Kütahya. Gediz, Saphane Dağı, N part of summit, rocky limestone slopes, 1800-2100 m, 17.6.1993, *Gemici, Y. & G. Görk 7694* (Holo, EGE).

A. spicato Post affinis, sed a caulibus floriferis 5-7 cm altis, racemo elongato ad 3 cm longo et usque 20-floro, silicula parva 3.5-5.5 × 4-5 mm longa, ala 0.7-1 mm lata, sinu 0.3-0.5 mm longo differt.

Glabrous perennial with a thick and much branched woody rhizome. Flowering stem 5-7 cm. Leaves subsessile, fleshy, lower and middle opposite, obovate-spathulate to orbicular (4-)5-13 × (4-)5-7 mm, upper alternate, elliptic to obovate, 5-11 × (2-)3-4.5 mm. Raceme up to 20-flowered, elongating in fruit up to 3 cm. Sepals 2.5-3 mm, broadly elliptic, outer saccate at base, margin membranous up to 0.4 mm broad. Petal 5.5-6.5 mm, claw ± indistinct and purple, lamina white, sometimes with faint purple veins. Filaments free, flattened, toothed, inner 2.5 mm, outer 1.5 mm long; anthers slightly apiculate, yellow, 0.5 mm long. Fruiting pedicels spreading, 4-7 mm. Siliculae broadly ovate to orbicular, bilocular and biovulate, 3.5-5.5 × 4-5 mm; wings 0.7-1 mm broad, entire with conspicuous purple tinged margin; sinus 0.3-0.5 mm; style 0.8-1.5 mm, stigma capitate. Seeds 1.4-1.8 mm, papillose, mucilaginous. Radicle accumbent.

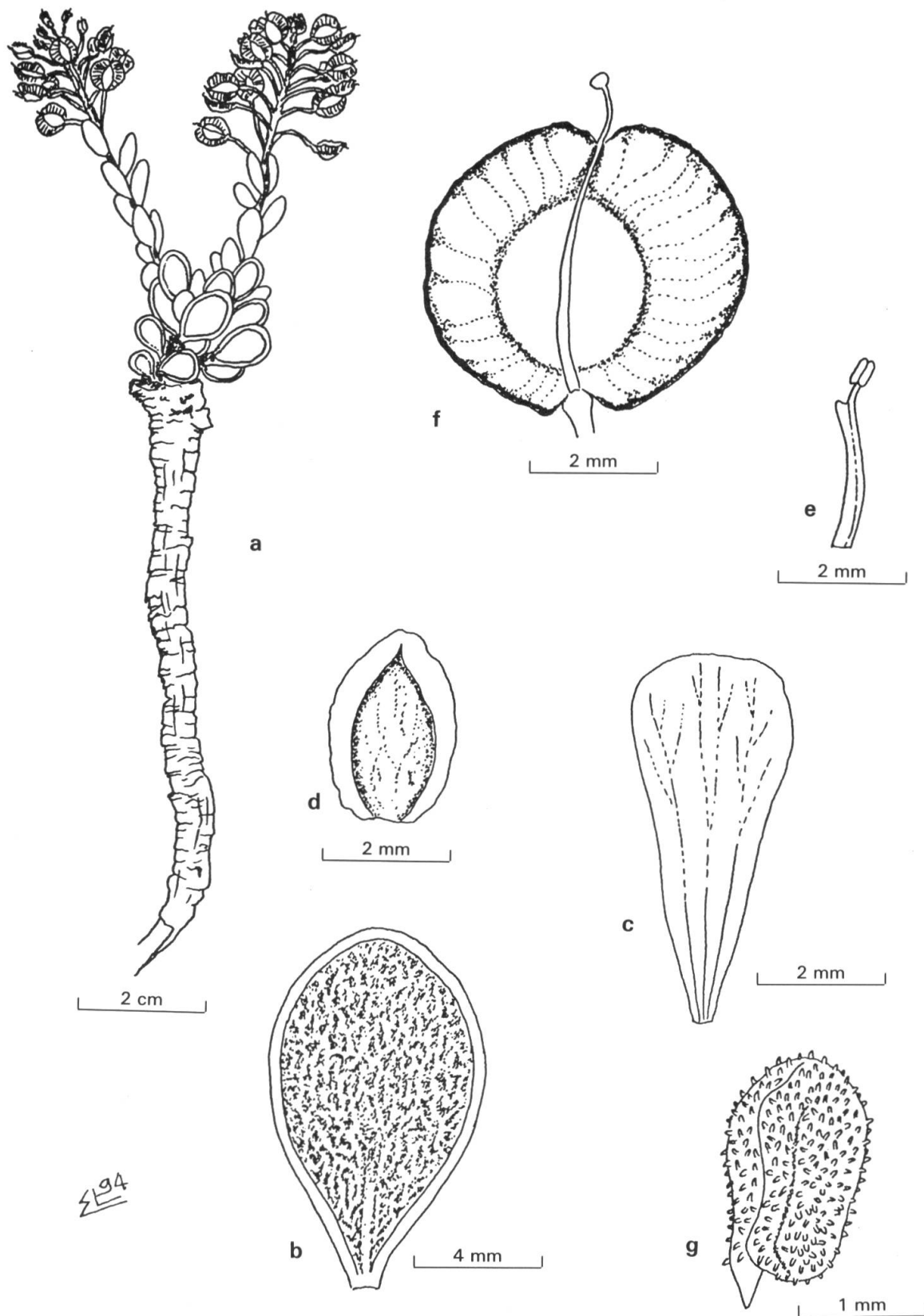


Fig. 1. — *Aethionema acarii* Gemici & Leblebici.
 a, habit; b, lower leaf; c, petal; d, sepal; e, stamen; f, fruit; g, seed.

Endemic. E. Medit. (mt.) element. Allied to *A. euonomides* (Boiss.) Bornm. but differing in its small siliculae, narrow wings, free style and toothed filament; although close to *Ae. saxatile* (L.) R. Br. it differs in its smaller bilocular and biovulate siliculae, shorter flowering stem, and mucilaginous seeds.

***Thlaspi leblebicii* Gemici & Görk, spec. nov.** (Fig. 2).

Type: Muğla: Köyceğiz, summit of Sandras Dağı, rocky peridotite slopes, 2000-2100 m, 7.6.1992, *Gemici, Y. & al. 6656* (Holo, EGE).

Herba perennis, glabra. Caudices squamati. Caules 4-6 cm alti, plures et simplices. Folia basilaria rosulata, spathulata, semiamplexicaulia, 10-17 mm longa, crenata vel integra, petiolata. Folia caulina 6-12 mm longa, oblonga-spathulata, brevissima auriculata, integra vel crenata. Inflorescentia simplex, densa, 10-12 mm longa in fructu, 12-29 flora. Sepala oblonga-elliptica, 2-2.5 mm longa, obtusa, purpurascens. Petala obovata, 5-6 mm longa, apice obtusa vel truncata, pallide rosea, venis fuscioribus. Filamenta linearia, exteriora 0.8-0.9 mm, interiora 1.2-1.5 mm longa; antherae 0.4-0.5 mm longae, flavae. Pedicelli fructiferi horizontaliter patentes, 4-6 mm longi. Siliculae obcordatae 5-7.5 × 3.5-5 mm, ala valvarum usque 1.5 mm lata ad apicem, basim versus angustata; sinus apicalis ad 1.5 mm latus; septum 4.5-6 × 1.5 mm; stylus in fructu 0.2-0.4 mm longus; stigma capitatum. Semina tuberculata, 1.5-1.7 mm longa, in quoque loculo 2.

Glabrous perennial herb, with scaly rootstock penetrating between stones and several unbranched stems, 4-6 cm high. Basal leaves rosetted, spathulate, semiamplexicaul, 10-17 mm long, crenate or entire, petiolate. Cauline leaves 6-12 mm long, oblong-spathulate, very shortly auriculate, entire or crenate. Inflorescence unbranched, dense, 10-12 mm long in fruit, 12-29 flowered. Sepals oblong-elliptic, 2-2.5 mm long, obtuse, purplish. Petals obovate, 5-6 mm long, apex obtuse or truncate, pale lilac with darker veins. Filaments linear, outer 0.8-0.9 mm, inner 1.2-1.5 mm long; anthers 0.4-0.5 mm long, yellow. Fruiting pedicel horizontally spreading, 4-6 mm long. Siliculae obcordate 5-7.5 × 3.5-5 mm. Wing of valves up to 1.5 mm broad at apex, narrowed towards base; apical sinus up to 1 mm broad; septum 4.5-6 × 1.5 mm; style in fruit 0.2-0.4 mm long; stigma capitate. Seeds tuberculate, 1.5-1.7 mm long, 2 in each loculus.

Endemic. E. Medit. (mt.) element. No close relatives.

Caryophyllaceae

***Dianthus akdaghensis* Gemici & Leblebici, spec. nov.** (Fig. 3).

Type: C2 Muğla: Fethiye, Akdağ, W side, above Camialanı, 2200 m, rocky limestone slopes, 8.7.1993, *Gemici, Y., G. Görk & N. Özel 6928* (Holo, EGE).

D. lydo Boiss. affinis, sed a caule (2-)3-6 cm alto, inflorescentia densa, 2-4 flora, bracteolis ovatis-oblongis differt.

Densely caespitose, pubescent perennial, woody at the base, sterile shoots absent. Flowering stem (2-)3-6 cm, simple, distinctly quadrangular. Basal and cauline leaves linear, 20-30 × 1-2 mm. Cauline leaves 2(3) pairs, longer than internodes; sheaths 3 times longer than the stem diameter. Flowers 2-4, in dense clusters, sessile. Bracts ovate-oblong, glabrous, coriaceous, pale, equalling or shorter than flowering head. Bracteoles 4, as long as or shorter than calyx, ovate-oblong, glabrous, aristate to cuspidate, pale, margin membranous and undulate towards apex. Calyx glabrous, 13-17 × 3-4 mm, cylindrical or scarcely widened below; teeth 4.5-5.5 mm, lanceolate acute to acuminate, margins scarios, ciliate. Petal limb 4-5 mm, obovate, distinctly dentate, barbate, reddish purple on both sides. Ovary shortly stipitate, ± 5.5 mm long, cylindrical, with ± 33 ovules. Capsule and seed unknown.

Endemic. E. Medit. (mt.) element. Allied to *D. lydos* Boiss. but differs in its short stem, bracteoles narrowly ovate and cordate, 2-4 flowered heads; it is distinguished from *D. cibrarius* Clem. by its narrower leaves and bracteoles.

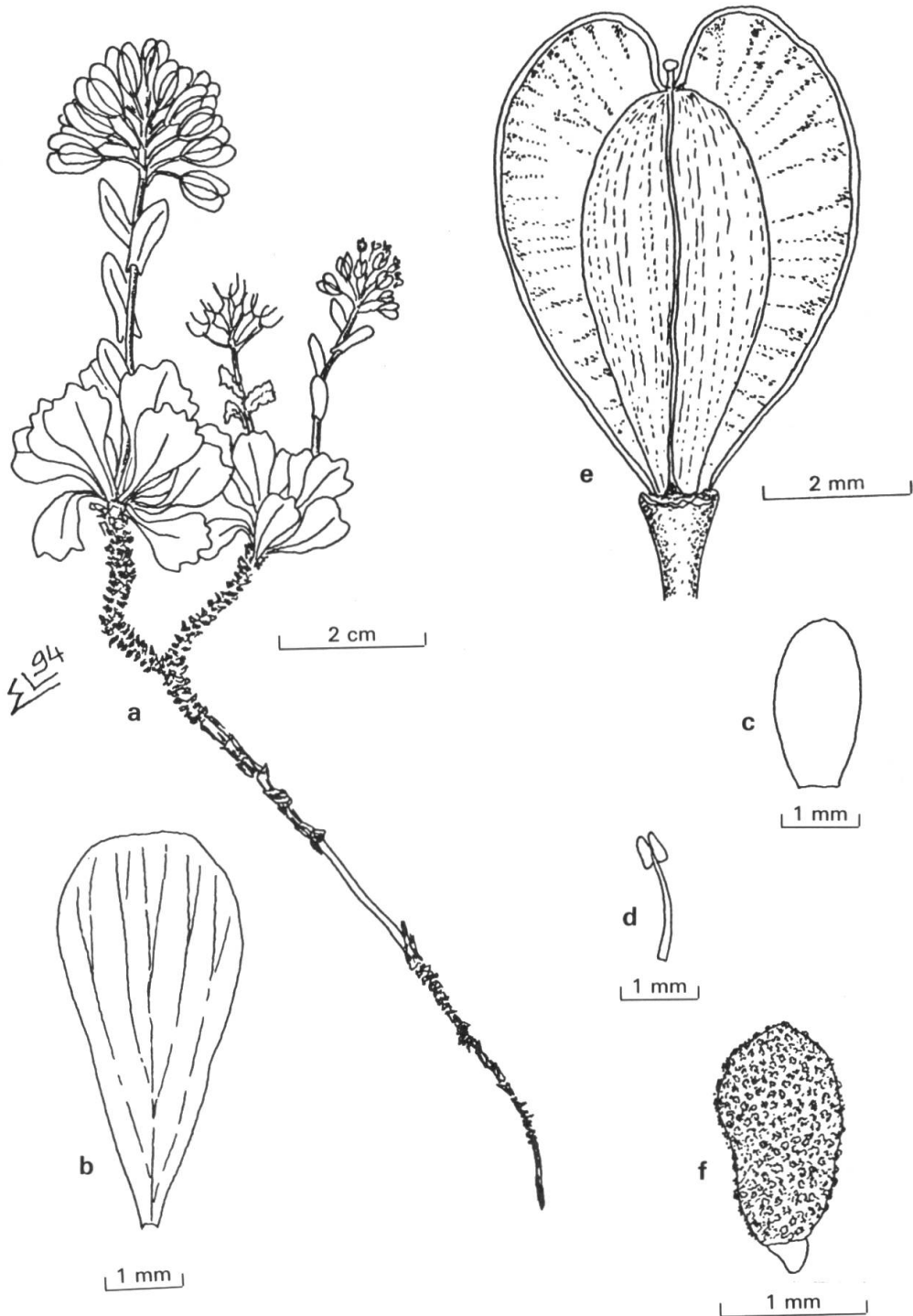


Fig. 2. — *Thlaspi leblebicii* Gemici & Görk.
a, habit; b, petal; c, sepal; d, stamen; e, fruit; f, seed.

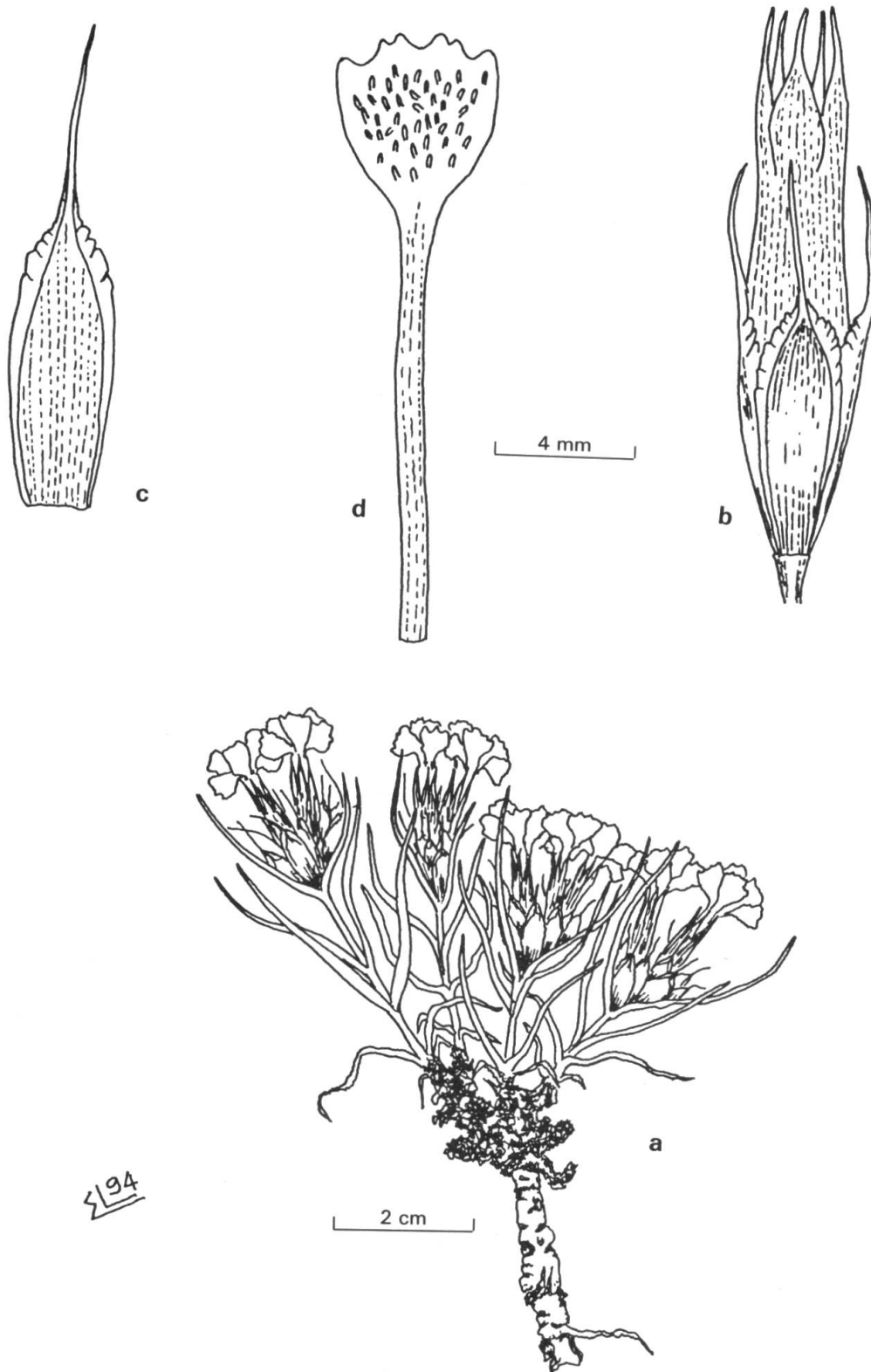


Fig. 3. — *Dianthus akdaghensis* Gemici & Leblebici.
a, habit; b, calyx; c, bracteole; d, petal.

*Hypericaceae****Hypericum kazdaghensis* Gemici & Leblebici, spec. nov.** (Fig. 4).Section: *Oligostema* (Boiss.) Stef.

Type: B1 Balıkesir: Edremit, Kazdağı, NE of Sarıkız Tepe, scree, 1500 m, 23.9.1993, *Gemici, Y. & al. 15259* (Holo, EGE).

H. aucheri Jaub. & Spach affinis, sed a foliis dimorphis, inflorescentiis dichasialibus, antheris sine glandulis nigris, semine reticulate foveato differt.

Perennial herbs. Stems 10-15 cm, prostrate, much branching at the base, without black glands, glabrous. Dimorphic leaves on fertile and sterile shoots. Leaves on sterile shoots 2.5-7 × 2.3-5 mm, orbicular to broadly spatulate, attenuate to base, subsessile, increasing towards apex, imbricate; leaves on fertile shoots 6-11 × 2-4 mm, narrowly oblong to elliptic, ± strongly revolute, glabrous, black glands absent or sometimes a few intramarginal ones. Inflorescence a dichasium, (1-)3-14 flowered. Petal and stamen persistent. Bracts narrowly oblong to linear, glandular ciliate, without superficial black glands. Sepals 5-6 mm, narrowly oblong to elliptic, subequal, acute, glandular ciliate and without superficial black glands and streaks. Petals 10-12 mm, usually orange veined, with black marginal glands at apex and without superficial black glands. Stamen fascicles 3, anthers without black glands. Styles 3. Capsules 4-5 mm, oblong-ovoid, rostrate, valves longitudinally vitate. Seeds 1 mm, reticulate-foveate.

Endemic. E. Medit. (mt.) element. The new species is closest to *H. aucheri* Jaub. & Spach but differs in having dimorphic leaves on sterile and fertile shoots, dichasium inflorescence, anthers without black glands and seeds reticulate-foveate.

*Geraniaceae****Erodium olympicum* Gemici & Leblebici, spec. nov.** (Fig. 5).Section: *Barbata* Boiss.

Type: A2 Bursa: Uludağ, N part of Zirve Tepe, limestone cliff crevices, 2300 m, 5.8.1993, *Gemici, Y. & al. 8280-b* (Holo, EGE).

E. cedrorum Schott & Kotschy affinis sed a petalis albis, sepalis non reflexis, arista 0.5-0.8 mm longa differt.

Dioecious perennial, with few lax rosettes. Basal leaves 4.5-7.5 cm (incl. petiole), bipinnatisect, greenish (not canescent), sparsely glandular, ± adpressed eglandular hairs, blade ovate-oblong, 25-40 × 10-22 mm, petiole 20-35 mm, segments 3-5, deeply pinnatifid, laciniae oblong, 1-1.5 mm broad. Stem 7-12 cm, single, ± densely glandular with short and long eglandular patent hairs, bearing 1-2 peduncles 2-6 cm long. Inflorescence densely long, short glandular and sparsely crisped pubescent. Bracts several. Sepals 5-6 mm in flower, not reflexed, densely long and short glandular, awn 0.5-0.8 mm, hairs at the apex eglandular, up to 1.7 mm long. Petals white, 8-10 mm long, broadly obovate, 1.5 × sepals. Beak of fruit 4-4.5 cm, stout, glandular below, mericarp 7-9 mm, pilose and short glandular, foveolae glandular hairy, without furrow beneath.

Endemic to Uludağ. Allied to *E. cedrorum* Schott & Kotschy from which it differs in having white petals, not reflexed sepals and short awn; also close to *E. absinthoides* Willd. subsp. *haradjianii* (Davis) Davis, from which it is distinguished by its densely glandular hairs on stem, leaves and inflorescence.

E. sibthorpiatum Boiss. subsp. *sibthorpiatum* is endemic to Uludağ (Topotype: *Gemici 8279*). Both species have been collected on the summit of Uludağ. But *E. olympicum* clearly differs from the later: it does not have a densely caespitose habit, does not form any hard wide hummocks, has basal greenish (not canescent) glandular leaves, 25-40 mm long (not 7-25 mm) and a densely glandular stem.

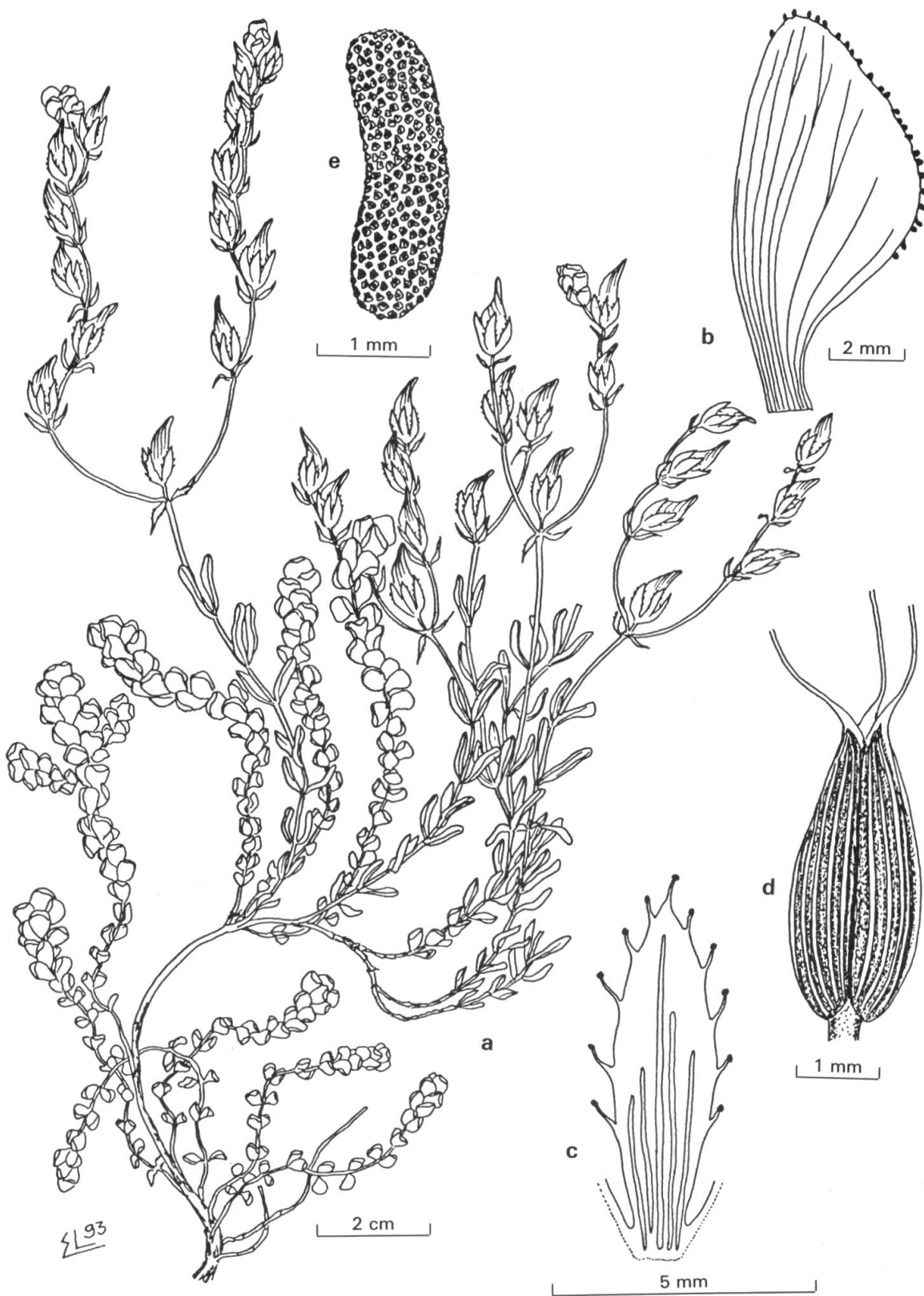


Fig. 4. — *Hypericum kazdaghensis* Gemici & Leblebici.
a, habit; b, petal; c, sepal; d capsule; e, seed.

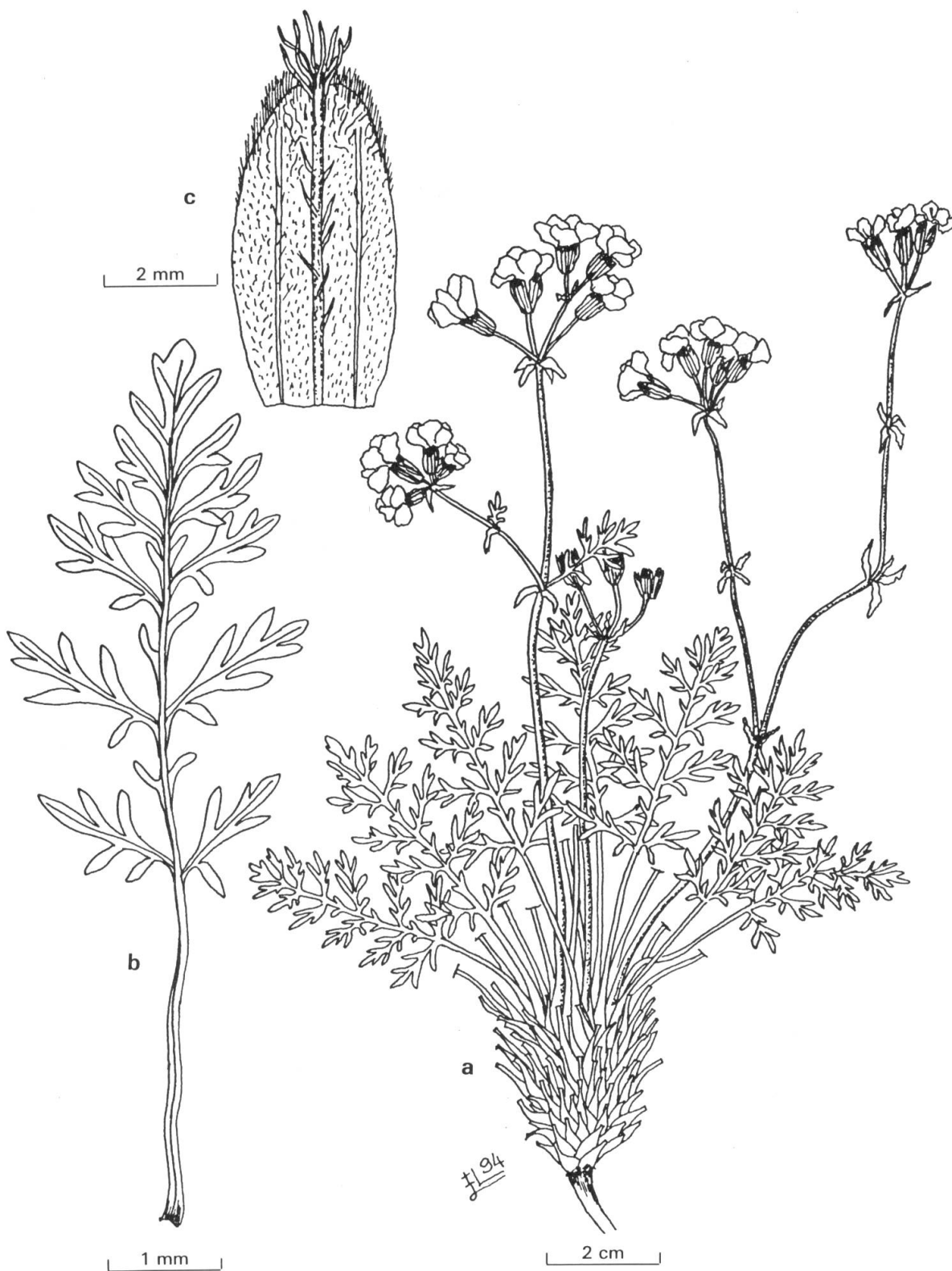


Fig. 5. — *Erodium olympicum* Gemici & Leblebici.
a, habit; b, leaf; c, sepal.

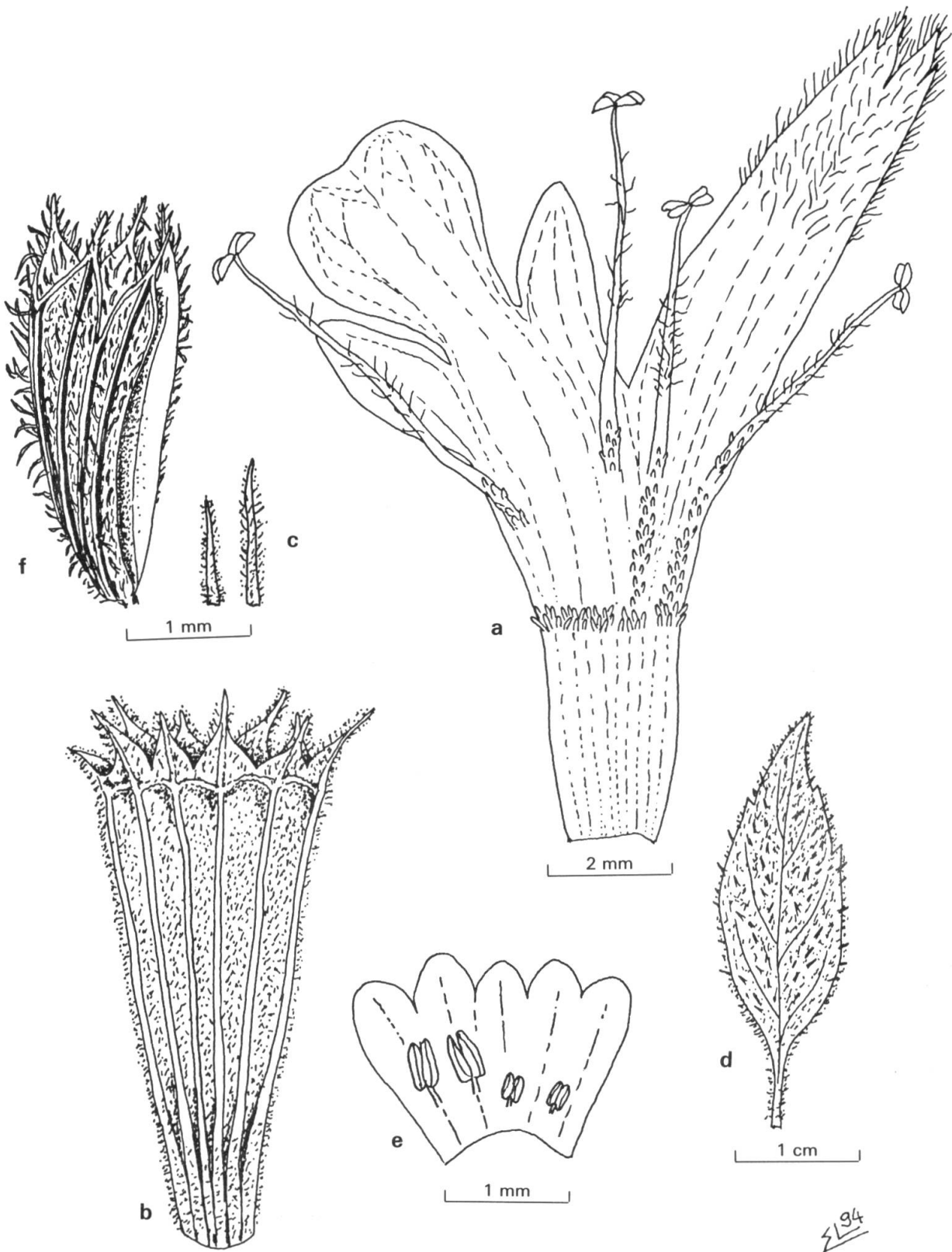


Fig. 6. — a-c, *Ballota sechmenii* Gemici & Leblebici.
 a, dissected corolla; b, calyx; c, bracteoles.
 d-f, *Nepeta anamurensis* Gemici & Leblebici.
 d, leaf; e, dissected corolla; f, calyx.

*Lamiaceae****Ballota sechmenii* Gemici & Leblebici, spec. nov.** (Fig. 6).

Type: C4 Antalya: N part of Anamur. Camyayla. Limestone cliff crevice, 1600 m, 25.8.1993, Gemici, Y. & Ö. Seçmen 8491 (Holo, EGE).

B. glandulosissima Hub.-Mor. & Patzak affinis sed a foliis parvis (15-20 × 15-20 mm) et utrinque stellato-pilosis, supra valde rugosis, bracteolis 1.5-2.5 mm longis, calyce brevi (7-9 mm longo), non infundibulari differt.

Perennial herb. Stem ascending from a woody stock, 20-30 cm, with simple, numerous, short and long, glandular hairs (never stellate and dendroid) and with sparsely long eglandular patent hairs. Cauline leaves ovate-orbicular, strongly rugose, 15-20 × 15-20 mm, base cordate, margine crenate-dentate, densely stellate beneath, stellate and short glandular above, petiole 3-7 mm long. Verticillasters 4-16 flowered, dense. Bracteoles linear, 1.5-2.5 mm long, hairy glandular. Calyx 7-9 mm, at top slightly dilated, 4-5 mm in diameter, weak and dense glandular hairs up to 0.5 mm long; teeth 10, unequal, divergent, longer ones 1-1.5 mm, shorter ones 0.4-0.8 mm. Corolla 13-15 mm, pink. Nutlets ± 2.5 mm long, truncate, smooth.

Endemic. E. Medit. (mt.) element. The new species is closest to *B. glandulosissima* Hub.-Mor. & Patzak but differs in having its leaves small (15-20 × 15-20 mm), stellate-pilose beneath and strongly rugose above, bracteoles 1.5-2.5 mm long, calyx short (7-9 mm, not 10-14 mm), non infundibular.

***Nepeta anamurensis* Gemici & Leblebici, spec. nov.** (Fig. 6).

Type: C4 Antalya: Anamur, Abanoz Yaylası, limestone cliff crevices, 1400 m, 25.8.1993, Gemici, Y. & Ö. Seçmen 8498 (Holo, EGE).

N. sorgerae Hedge & Lamond affinis sed a floribus parvis nec exserto calyce, verticillastro 4-8 floro, bracteolis 3-4.5 mm, calyce antice usque ad basim fisso differt.

Perennial; stems many, ascending-erect, 15-25 cm, unbranched, sparsely villous with long patent, eglandular and glandular hairs. Leaves 10-25 × 4-14 mm, lower ones broadly ovate, upper ones ovate-lanceolate, entire or serrate towards apex shallowly or conspicuously, petiole 4-10 mm long. Verticillasters 4-8 flowered, below distant, peduncle 3-4 mm long. Bracteoles linear-lanceolate, 3-4.5 × 0.2-0.4 mm. Calyx ± tubular, 4-7 mm, straight or slightly curved, anterior part of the calyx split up to base; teeth oblong-ovate, acuminate. Corolla 1.5-1.8 mm long, included within calyx, purple. Nutlets (young) oblong, ± tuberculate.

Endemic. E. Medit. (mt.) element. Allied to *N. sorgerae* Hedge & Lamond, from which it differs in having small flowers, corolla included within calyx, verticillasters 4-8 (not 12-14) flowered, bracteoles 3. It is closest to *N. stricta* (Banks & Sol.) Hedge & Lamond in having a small corolla, not exserted from calyx, but differs from the later in having the anterior part of the calyx split up to base and an inflorescence not a widely branched thyrse.

ACKNOWLEDGEMENTS

The field work was financed by TUBITAK (project no: TBAG 993).