

**Zeitschrift:** Bauen + Wohnen = Construction + habitation = Building + home : internationale Zeitschrift  
**Herausgeber:** Bauen + Wohnen  
**Band:** 7 (1953)  
**Heft:** 1

## **Werbung**

### **Nutzungsbedingungen**

Die ETH-Bibliothek ist die Anbieterin der digitalisierten Zeitschriften auf E-Periodica. Sie besitzt keine Urheberrechte an den Zeitschriften und ist nicht verantwortlich für deren Inhalte. Die Rechte liegen in der Regel bei den Herausgebern beziehungsweise den externen Rechteinhabern. Das Veröffentlichen von Bildern in Print- und Online-Publikationen sowie auf Social Media-Kanälen oder Webseiten ist nur mit vorheriger Genehmigung der Rechteinhaber erlaubt. [Mehr erfahren](#)

### **Conditions d'utilisation**

L'ETH Library est le fournisseur des revues numérisées. Elle ne détient aucun droit d'auteur sur les revues et n'est pas responsable de leur contenu. En règle générale, les droits sont détenus par les éditeurs ou les détenteurs de droits externes. La reproduction d'images dans des publications imprimées ou en ligne ainsi que sur des canaux de médias sociaux ou des sites web n'est autorisée qu'avec l'accord préalable des détenteurs des droits. [En savoir plus](#)

### **Terms of use**

The ETH Library is the provider of the digitised journals. It does not own any copyrights to the journals and is not responsible for their content. The rights usually lie with the publishers or the external rights holders. Publishing images in print and online publications, as well as on social media channels or websites, is only permitted with the prior consent of the rights holders. [Find out more](#)

**Download PDF:** 09.07.2025

**ETH-Bibliothek Zürich, E-Periodica, <https://www.e-periodica.ch>**

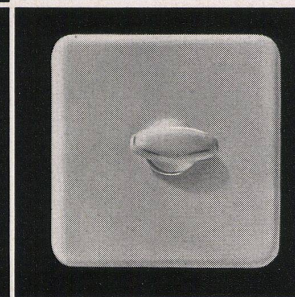
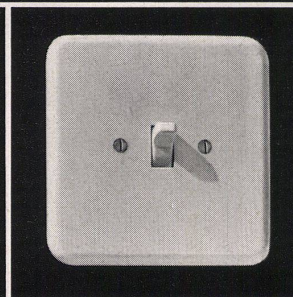
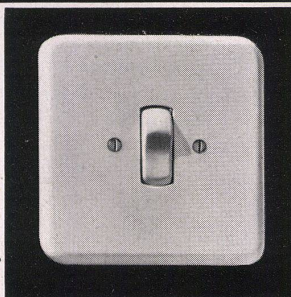


## Neuzeitliche Schalter und Steckdosen für Unterputzmontage

### Adolf Feller AG. Horgen, Fabrik elektrischer Apparate



*Feller*



round the centrally located hall, which is well lit and ventilated by clerestory windows. Steel windows are used for the clerestory of the hall, all the other rooms have wooden windows.

#### House on the slopes of the Taunus (pages 14-15)

The owner was anxious to have a new home with plenty of light, air and sunshine for his family of six, all of whom are sports enthusiasts. His living and work room was to be well away from any disturbance caused by the children but was to be accessible from the main entrance. The lady of the house also wished her room to have a southern exposure and to be connected with her two daughters' room and then to her son's room. A southern exposure was of course desired for the living-room with dining area. To ensure privacy and to make one unit of the indoor and outdoor living areas, an L-shaped plan with the bedroom wing projecting southwards along the street was considered the most suitable.

#### Living-room and bedroom in a one-family house near Zurich. Furnished with Freba furniture (pages 16-18)

The parents' bedroom is annexed to the living-room in the form of a gallery. The partition between the two rooms is formed by the fireplace and the plant area, a bookcase and a low linen closet on the bedroom side. The opening can be closed by means of two sliding-walls. The rooms are furnished with Freba furniture. The material used is natural-finished maple and birch. The closet units can be combined at will or varied in height; they are placed on low or high benches or on wooden frames with steel feet. The sliding doors may be interchanged at any time.

#### Tables with metal frames (pages 20-21)

These tables are very versatile: The four sizes can be combined in many different ways: two square tables to form a rectangle or two rectangles to form a large square etc. The tops are obtainable in a wide variety of shades and thus permit

attractive colour combinations as well as good matching with any colour schemes.

#### New standard lamp for living-room and office (page 24)

A distinguishing feature of this new standard lamp, which is movable in any direction, is the fact that its various members are at all times in perfect equilibrium, thus allowing the lamp to be set in any position by a touch of the hand. It has a maximum extension of 1.60 metres and is articulated almost down to floor level.

#### Rectifier factory of the Secheron Works Co. Geneva (pages 25-29)

The building was erected in the south-east corner of the area occupied by the Ateliers de Sécheron in Geneva. Since the manufacture of rectifiers constitutes an independent branch of production, three different groups of rooms had to be accommodated: storage in the basement, production work-shops on the ground-floor and offices and laboratories on the top floor.

Since several large residential buildings and the imposing thoroughfare of the Avenue de France, which leads to the seats of various international organizations, are in the immediate neighbourhood, the architects were compelled to choose a type of architecture which would not accent the industrial purpose of the building.

The building is subdivided into the following sections: Basement: storage rooms, air-raid shelter, cloakrooms and lavatories for workers. Above there is the central two-storey assembly hall (some thirty feet in height) surrounded by the production workshops, and - on the level of the top floor - offices and laboratories.

The design of the facade of the top storey with its regular division into windows makes it possible in the event of an eventual alteration to shift the partitions so that the rooms would fulfil the different conditions imposed by manufacturing requirements.

A steel frame was preferred to a ferro-

concrete frame since the former is in general more adaptable if conversion or local strengthening of the structure prove necessary.

The manufacture of rectifiers requires large, well-lit, and clean workshops, and for this reason extensive use was made of glass bricks. Both these and the ceramic sheets with which the floor is covered facilitate easy cleaning.

The building is equipped with five travelling cranes with a lifting capacity of 2 to 5 tons. The larger crane in the assembly hall can also serve the basement through an aperture in the floor of the bottom storey and the top floor by means of a balcony.

#### Administrative block of the Rothrist Co. paper bag factory at Rothrist (pages 30-33)

An existing administrative block of the Rothrist paper bag factory was to be enlarged. The architect suggested a new building instead of an extension, for cube method reckoning, internal office organization and the site all indicated that an uncompromising solution was necessary. The ground-floor rooms are chiefly concerned with factory matters and outside business (wages office, rooms for the works manager, representatives, management and conferences). Rooms handling internal administration (correspondence, accounting, sales, records) are located on the upper floor.

In determining the form of structure the following conditions were of importance: The greatest possible freedom in the event of a later rearrangement of the rooms - few pillars and easily displaceable walls.

The quickest possible method of construction - use of pre-fabricated dry-construction elements.

The first consideration gave rise to a very ingenious ferro-concrete framed structure with only two interior pillars on the ground-floor. The second consideration led to the use of pre-fabricated units of Grisotex sheets and glass for the interior non-bearing walls. The use of finished products on the facades obviated all plas-

tering and reduced the painting to a minimum.

#### Metal company's office and warehouse in Rotterdam (pages 34-38)

This long and cleanly proportioned building is divided into a ground-floor with stores, garage, dispatch department and office, heating, a mezzanine floor with store-rooms, and an office floor.

Like the ground-floor, the mezzanine contains store-rooms, and in addition, the canteen and washrooms and changing-rooms for the staff working on the two storage floors. The first storey, which juts out beyond the basement line, is designed as the office floor proper. The rooms for the management, offices and board rooms, and the large room for accounting and administration, one wall of which is entirely glazed, are grouped on the north-east side of the reception hall on the first floor. In front of the refreshment room there is a terrace which permits the staff to spend breaks in the open air.

In their design the architects aimed at allowing the character of the building as such to come through. The marked division of the storeys according to function into storage floors and office floor accents the horizontal flow of the exterior. Uncompromising in plan throughout, the building incorporates the best of the modern Dutch architectural tradition, and is a testimony to the vitality of the principles of the «Stijl» movement.

#### Sports pavilion at Aardenburg (Holland) (pages 39-40)

Two small wings are attached to a central clubroom measuring 12 x 5 metres. In the first of these a kitchen is located; in the second and longer wing, which is placed opposite, there is an equipment room, cloakroom, WC and showers as well as a small referee's room. The clubroom is surrounded on all sides by a broad covered terrace. The clubroom section is built round a ferro-concrete frame, the two wings are of brick and partly plastered.



Bahnhof Enge, Zürich

Spenglerarbeit in Kupferblech

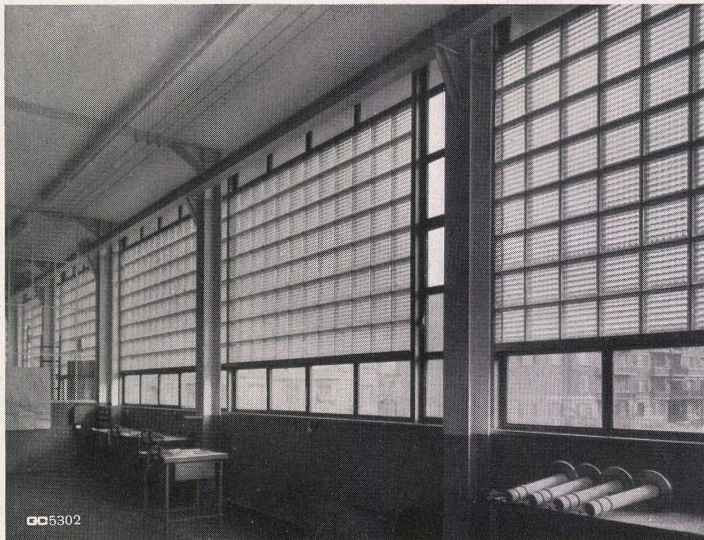
Spenglerei Zürich 2 Allmendstr. 5/7 Tel. 051/25 79 80

JAKOB **SCHERRER** SÖHNE

ausgeführt 1925

ohne Reparaturen bis heute





Stahlfenster in Verbindung mit Glasbausteinen

005302

Satz und Druck Huber & Co. AG  
Frauenfeld  
Clichés W. Nievergelt, Zürich  
Papiere Papierfabrik Biberist

#### Auslieferungsstellen im Ausland:

Argentinien: Carlos Hirsch, Libros-Laminas, Florida 165, Buenos Aires/Argentinien  
Belgien: Office Internationale de Librairie, Bruxelles, 184, rue de l'Hôtel-des-Monnaies  
Columbia: Libreria Arquitectónica, Bruno Kreitner, Apartado Aéreo 1411, Barranquilla  
Deutschland: Ausland-Zeitungshandel W. E. Saarbach, Gereonstraße 25-29, Köln 1, Postfach  
England: Swiss Publicity Office, 61, Woodland Rise, London N. 10

Frankreich: Vincent, Fréal & Cie., rue des Beaux-Arts 4, Paris VI

Israel: Internationale Booksellers A. Lichtenhayn - H. H. Latz, Tel-Aviv, 85, Allenby Rd., P.O.B. 1030

Italien: A. Salto, Libreria artistica, Milano, Via Santo Spirito 14

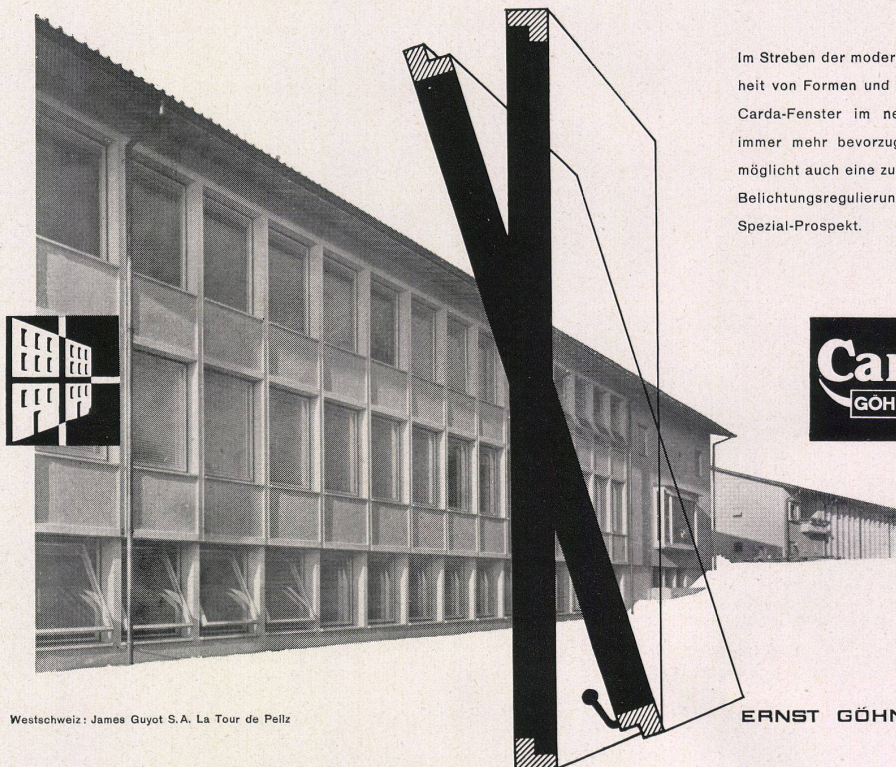
Luxemburg: Mess. Paul Kraus, Luxemburg, 29, rue Joseph Junck

Österreich: Morawa & Cie., Wien

USA: Wittenborn & Cie., 38 East 57th Street, New York

#### Fotografenliste

P. Molinard, Paris - Idaka, Chicago - Ezra Stoller, New York - Hermann Claasen, Köln - Hans Finsler SWB, Zürich - O. Rathgeber, Darmstadt - Robert Damora, New York - Wolfgang Roelli, Zürich - Lieseberg, Hannover - Otto Pfeifer SWB, Luzern - V. Bouverat, Genève - Bernhard Moosbrugger, Zürich - J. A. Vrijhof, Rotterdam.  
Die Fotos auf den Seiten 1-3 wurden uns freundlicherweise von der Redaktion «la maison française», Paris, zur Verfügung gestellt.



Westschweiz: James Guyot S.A. La Tour de Pellz

Im Streben der modernen Architektur nach Klarheit von Formen und Linien wird das ungeteilte Carda-Fenster im neuzeitlichen Schulhausbau immer mehr bevorzugt. Seine Konstruktion ermöglicht auch eine zugfreie Lüftung und bessere Belichtungsregulierung. Verlangen Sie bitte den Spezial-Prospekt.

**Carda**  
GÖHNER FENSTER

Basel Bern

St. Gallen Zug

ERNST GÖHNER AG ZÜRICH

Biel Lugano