

Zeitschrift: Bauen + Wohnen = Construction + habitation = Building + home : internationale Zeitschrift

Herausgeber: Bauen + Wohnen

Band: 19 (1965)

Heft: 7

Rubrik: Unsere Mitarbeiter = Nos collaborateurs = Our collaborators

Nutzungsbedingungen

Die ETH-Bibliothek ist die Anbieterin der digitalisierten Zeitschriften auf E-Periodica. Sie besitzt keine Urheberrechte an den Zeitschriften und ist nicht verantwortlich für deren Inhalte. Die Rechte liegen in der Regel bei den Herausgebern beziehungsweise den externen Rechteinhabern. Das Veröffentlichen von Bildern in Print- und Online-Publikationen sowie auf Social Media-Kanälen oder Webseiten ist nur mit vorheriger Genehmigung der Rechteinhaber erlaubt. [Mehr erfahren](#)

Conditions d'utilisation

L'ETH Library est le fournisseur des revues numérisées. Elle ne détient aucun droit d'auteur sur les revues et n'est pas responsable de leur contenu. En règle générale, les droits sont détenus par les éditeurs ou les détenteurs de droits externes. La reproduction d'images dans des publications imprimées ou en ligne ainsi que sur des canaux de médias sociaux ou des sites web n'est autorisée qu'avec l'accord préalable des détenteurs des droits. [En savoir plus](#)

Terms of use

The ETH Library is the provider of the digitised journals. It does not own any copyrights to the journals and is not responsible for their content. The rights usually lie with the publishers or the external rights holders. Publishing images in print and online publications, as well as on social media channels or websites, is only permitted with the prior consent of the rights holders. [Find out more](#)

Download PDF: 10.08.2025

ETH-Bibliothek Zürich, E-Periodica, <https://www.e-periodica.ch>

The college is composed of volumes interconnected by covered passageways and green or paved quadrangles. Using the already existing stand of trees, Jacobsen worked out the landscape design, producing something having the effect of an English park, quite different from the symmetrical Continental style of garden. It is self-contained and secluded, to cut out road noises. The planting scheme is the dominant element.

The central entrance hall is reached along the river. This hall, being located on the ground level of the west residence wing, looks into a very large green quadrangle, which is bounded by the two residence wings, the refectory, the library and by covered passageways, connecting these various buildings.

The intimate common rooms, on one level, are grouped together around small courts with north access to the refectory, which, with its great height and overhead lighting, is adapted to the traditional ceremonial style of life still prevailing at an English university, which in some respects resembles a monastery. The chairs with high backs and the pin-point lighting on each table harmonize well with the required dark academic gowns.

The library with its galleries, where the books are kept, is illuminated indirectly by counter-ceiling elements; this arrangement encourages greater concentration on the part of the students. The covered passageways connecting the library, the refectory and the residence quarters are bounded by walls forming recesses, where students can engage in discussions.

In any case, meditation has an important place in the conception of the college: thus, along the big pool, benches surrounded by wall-screens make for privacy. Between the library and the lecture theatres there is another quadrangle, surrounded by walls, accommodating the clock-tower, which dominates the entire complex.

The residence quarters, with two flats on the ground floor, occupied by the professors and the students of the upper classes, and two upper levels with 5 rooms each occupied by students of the lower classes, are made up of eight independent parts, grouped around a stairwell and equipped on each level with a bathroom, WC and a small kitchen.

This arrangement corresponds to the typical English college lay-out. Moreover, in the over-all conception, Jacobsen has sought to adapt to specific English traditions. A large pool runs along the whole site in front of the residences and permits direct access from the ground-floor flats, for which it constitutes a prolongation of the interior area. At the south extremity of the site is the music pavilion,

whose plan is freely conceived for acoustic reasons and which gives the effect of a crystal against the background of trees.

Construction: a module of 3.20/2.45 m, dictates the structure of the complex: beams of pre-fab concrete, placed on walls of raw brick (common rooms, inter-axial distance: 2.45 m.) framework of pre-fab reinforced concrete (residences, inter-axial: 3.20 = width of rooms), cruciform supports of pre-fab concrete (large areas: auditorium refectory, library) taking stringers of pre-fab concrete,

structure of secondary roofing stringers of pre-fab concrete (inter-axial: 2.45).

The application of the basic scheme depends on the function of each detail: The supports of the refectory are 3 meters from the face, and the exterior non-supporting walls are taken by the principal stringers which cross the face.

Continuous glazing further accents the construction. The roofing is made up of light pre-fab concrete slabs, placed on the secondary structure.

The emplacement of the continuous glazing is not usual. The artificial illumination is attached to the counter ceilings.

The face of the library is located in the structural plan at ground-floor level, which takes the steel structure of the upper galleries, where the stacks appear. The structure supporting the roof is the same as that of the refectory. The non-supporting faces are generally glazed.

This construction principle may appear mannered, but it permits a clear distinction between the supporting and non-supporting parts of the building.

The auditorium now under construction is based on the same structural principle, which constitutes a large volume on two levels and small galleries around the upper floor.

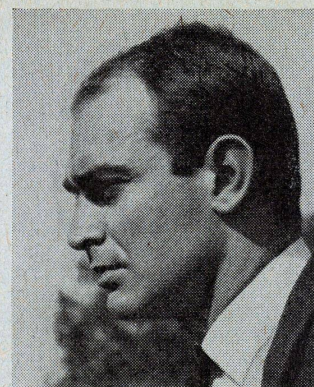
The music pavilion is made up of brick supporting walls and reinforced concrete slabs.

Materials: exterior facing: yellow concrete slabs; thickness: 5 m. Interior facing: white cement. Structure of pre-fab reinforced concrete, poured in smooth jointless coffering, windows and outside doors either of eloxidized aluminium or of bronze, brise-soleil and facing of façade of library, of bronze; doors of auditorium of oak. Flooring of green slate in the refectory, of linoleum in the other rooms. Counter ceilings of perforated aluminium panels.

Heating via radiators, via floor units (large volumes) or air-conditioning (auditorium).

Unsere Mitarbeiter

Nos collaborateurs
Our collaborators



Peter P. Schweger

Geboren 1935. Studium an der Technischen Hochschule Budapest und an der ETH Zürich; Diplomabschluß 1959. Praktikum und Mitarbeit in verschiedenen Büros in Budapest, Zürich, Hamburg und Wien. Eigenes Büro seit 1962 mit Anton Schweighofer in Wien und seit 1963 in Hamburg, z. Z. in Gemeinschaft mit Heinz Graaf.

Wichtigste Bauten:

Industriebau, Verwaltungsbau (im Bau), Kindergarten (im Bau) in Wien, Wohn- und Bürohaus Salzburg, Ingenieurschule für Verfahrens- und Produktionstechnik (im Bau), Studentenheim (im Bau), Wohnhäuser (im Bau) in Hamburg, Forschungsarbeit über Bausysteme.

Biografische Notizen von Arne Jacobsen in Heft 3/61

Inhaltsverzeichnis

Ernst Zietzschmann, Hannover

Berufsschulen heute und morgen 251

Werkkunstschule

Hannover-Herrenhausen 252-264

Werner Frey, Zürich

Neubau der Abteilung Frauenberufe
der Gewerbeschule Zürich 265-268

Peter P. Schweger, Hamburg/Wien
Heinz Graaf, Hamburg
Anton Schweighofer, Wien

Bausystem für Ausbildungsstätten 269-274

Altug und Behruz, Çinici, Ankara

Middle East Technical University,
Ankara 275-280

Arne Jacobsen, Knud Holscher,
Peter Denney, Hans Henrik Olrik,
Klampenborg

Saint Catherine's College
in Oxford 281-294

Chronik

Konstruktionsblätter