

Zeitschrift: IABSE reports = Rapports AIPC = IVBH Berichte
Band: 83 (1999)

Artikel: Reinforced concrete deep beams strengthened in shear
Autor: Jardim, Liana / Gomes, Ronaldo / Melo, Guilherme
DOI: <https://doi.org/10.5169/seals-62928>

Nutzungsbedingungen

Die ETH-Bibliothek ist die Anbieterin der digitalisierten Zeitschriften auf E-Periodica. Sie besitzt keine Urheberrechte an den Zeitschriften und ist nicht verantwortlich für deren Inhalte. Die Rechte liegen in der Regel bei den Herausgebern beziehungsweise den externen Rechteinhabern. Das Veröffentlichen von Bildern in Print- und Online-Publikationen sowie auf Social Media-Kanälen oder Webseiten ist nur mit vorheriger Genehmigung der Rechteinhaber erlaubt. [Mehr erfahren](#)

Conditions d'utilisation

L'ETH Library est le fournisseur des revues numérisées. Elle ne détient aucun droit d'auteur sur les revues et n'est pas responsable de leur contenu. En règle générale, les droits sont détenus par les éditeurs ou les détenteurs de droits externes. La reproduction d'images dans des publications imprimées ou en ligne ainsi que sur des canaux de médias sociaux ou des sites web n'est autorisée qu'avec l'accord préalable des détenteurs des droits. [En savoir plus](#)

Terms of use

The ETH Library is the provider of the digitised journals. It does not own any copyrights to the journals and is not responsible for their content. The rights usually lie with the publishers or the external rights holders. Publishing images in print and online publications, as well as on social media channels or websites, is only permitted with the prior consent of the rights holders. [Find out more](#)

Download PDF: 09.12.2025

ETH-Bibliothek Zürich, E-Periodica, <https://www.e-periodica.ch>



Reinforced Concrete Deep Beams Strengthened in Shear

Liana JARDIM

Civil Engineer, M.Sc.
University of Brasília
Brasília, DF, Brasil

Former MSc student at the Univ. of Brasília. She was supervised by the two other authors in her dissertation on the subject of this paper.

Ronaldo GOMES

Civil Engineer, Ph.D.
Federal Univ. of Goiás
Goiânia, GO, Brasil

Lecturer in Concrete Structures and the Coordinator of the Msc course in Civil Engineering at the Federal University of Goiás, Brazil.

Guilherme MELO

Civil Engineer, Ph.D.
University of Brasília
Brasília, DF, Brasil

Lecturer in Concrete Structures and Head of the Civil Engineering Department at the University of Brasília, Brazil.

Summary

Results of tests in nine reinforced concrete deep beams, simply supported and submitted to two top point loads (seven strengthened in shear) are shown. The seven strengthened beams were 800 x 150 x 1600 mm with f_c around 50 MPa, designed with insufficient shear reinforcement and loaded previously until service load. The main strengthened variables were the type, position and amount of the reinforcement positioned. The strengthening reinforcement were positioned with special mortar in ducts sawn on the surface of the beam. The results showed that the strengthening technique adopted worked properly without any problem of anchorage of the glued reinforcement. Besides this, the strengthened beams reached considerable higher ultimate loads and behaved very well in comparison with the two reference ones.

Keywords: Deep Beams, Reinforced Concrete, Repair, Shear Strengthening.

1. Experimental Program

The main objective of the research was to investigate the behaviour of reinforced concrete deep beams strengthened in shear, after being loaded to service load, in comparison to a monolithic beam with the full reinforcement. This work followed experimental investigations done at the University of Brasília in deep beams in 1994 and in strengthened columns in 1996, under two of the main research interests of the Structures Group, "*Experimental Analysis of Structures*" and "*Pathology and Recuperation of Structures*". The investigation was basically done in four steps: A reference beam with insufficient shear reinforcement was initially tested until rupture (1st step). It was adopted after this first test about 70% of the ultimate load was the level that all others beams would be loaded (2nd step) before strengthening (3rd step). These beams and beam 2M (monolithic) were then tested up to failure (4th step). The strengthening reinforcement were positioned with high performance mortar in ducts sawn on the surface of the beam. The behaviour of the beams tested were analysed through the strains of the flexural and shear reinforcement, and of the concrete, by

the horizontal and vertical deflections, by the developing and widths of the cracks, and by the ultimate load and mechanism of rupture. The shear reinforcement of the reference beam (1) and for all the beams to be strengthened was similar, an orthogonal mesh with smooth bars. The strengthening shear reinforcement were also of smooth bars, as horizontal and vertical bars (2/S to 4/S, 6/S and 8/S), and of inclined reinforcement (5/S and 7/S). Figures 1 and 2 present the detailing of the beams 5/S and 7/S respectively. The dotted lines in these figures are the initial reinforcement and the continuous line are the strengthening reinforcement positioned later. Beams 2/S, 3/S, 4/S, 6/S and 8/S were strengthened with the same amount of orthogonal reinforcement, but with different detailing.

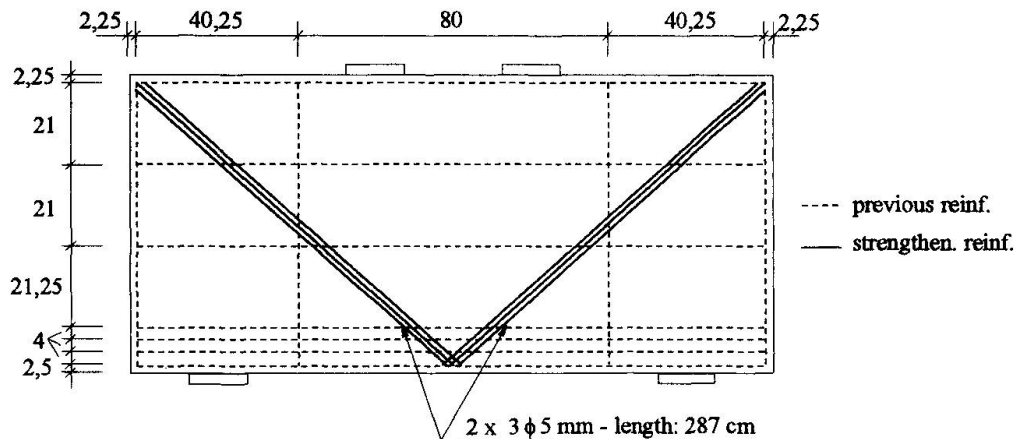


Fig. 1 – Beam 5/S strengthening reinforcement detail (cm)

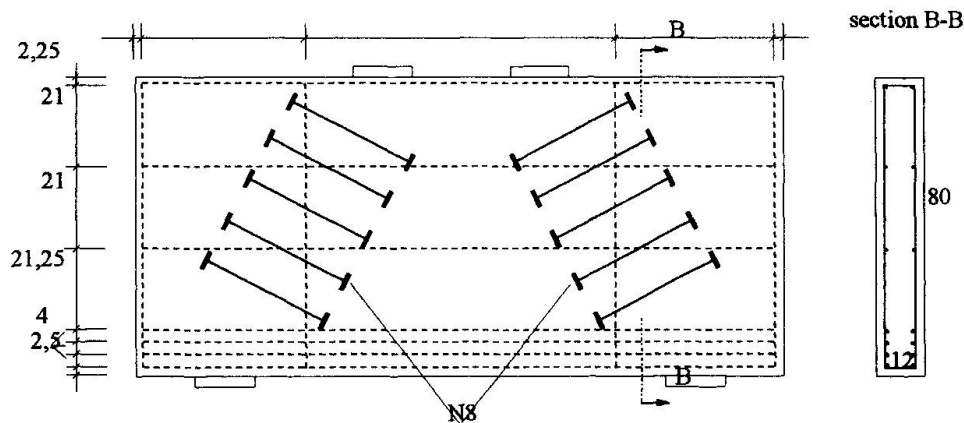


Fig. 2– Beam 7/S strengthening reinforcement detail