

**Zeitschrift:** IABSE reports = Rapports AIPC = IVBH Berichte  
**Band:** 39 (1982)  
  
**Artikel:** Nihon Doro Kodan's Bridge maintenance system  
**Autor:** Mikoshiba, Mitsuharu / Tanaka, Yuji  
**DOI:** <https://doi.org/10.5169/seals-30164>

### **Nutzungsbedingungen**

Die ETH-Bibliothek ist die Anbieterin der digitalisierten Zeitschriften auf E-Periodica. Sie besitzt keine Urheberrechte an den Zeitschriften und ist nicht verantwortlich für deren Inhalte. Die Rechte liegen in der Regel bei den Herausgebern beziehungsweise den externen Rechteinhabern. Das Veröffentlichen von Bildern in Print- und Online-Publikationen sowie auf Social Media-Kanälen oder Webseiten ist nur mit vorheriger Genehmigung der Rechteinhaber erlaubt. [Mehr erfahren](#)

### **Conditions d'utilisation**

L'ETH Library est le fournisseur des revues numérisées. Elle ne détient aucun droit d'auteur sur les revues et n'est pas responsable de leur contenu. En règle générale, les droits sont détenus par les éditeurs ou les détenteurs de droits externes. La reproduction d'images dans des publications imprimées ou en ligne ainsi que sur des canaux de médias sociaux ou des sites web n'est autorisée qu'avec l'accord préalable des détenteurs des droits. [En savoir plus](#)

### **Terms of use**

The ETH Library is the provider of the digitised journals. It does not own any copyrights to the journals and is not responsible for their content. The rights usually lie with the publishers or the external rights holders. Publishing images in print and online publications, as well as on social media channels or websites, is only permitted with the prior consent of the rights holders. [Find out more](#)

**Download PDF:** 09.12.2025

**ETH-Bibliothek Zürich, E-Periodica, <https://www.e-periodica.ch>**

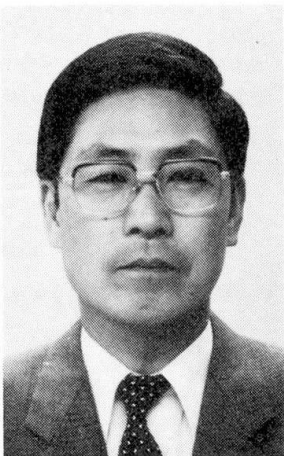
## Nihon Doro Kodan's Bridge Maintenance System

Programme d'entretien de ponts-routes au Japon

Brückeninstandhaltungs-Kontrollsystem in Japan

### Mitsuharu MIKOSHIBA

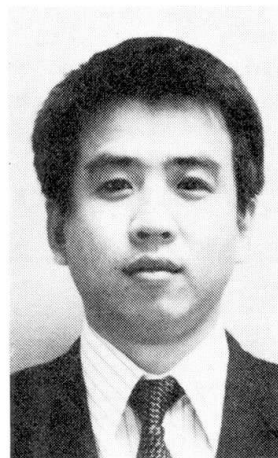
Head, Bridge and Structure Section,  
Nihon Doro Kodan  
Tokyo, Japan



Born in 1935, graduate from Waseda Univ., Faculty of Civil Engineering Civil Engineer for planning design and supervision of Highway Projects at Nihon Doro Kodan for 25 years. Expert on large scale pre-stressed concrete bridge design and construction.

### Yuji TANAKA

Maintenance Planning Section,  
Nihon Doro Kodan  
Tokyo, Japan



Born in 1951, graduate from Nihon Univ., Faculty of Civil Engineering Participated in the construction and administration of Express Highways for 9 years at Nihon Doro Kodan. Presently engaged in the inspection and repair services of bridges.

### SUMMARY

The bridge maintenance system of Nihon Doro Kodan is introduced in this report. The maintenance and repairment works of bridge structures are one of the major maintenance works of the Japan's highway operations. The rating and repairment of damaged bridge decks are also explained as a main part of the above system.

### RESUME

Le rapport présente le programme d'entretien des ponts dans le réseau japonais d'autoroutes. Les travaux d'entretien et de réparation des structures de ponts font partie des travaux essentiels pour l'exploitation efficace du réseau autoroutier. L'évaluation et la réparation des tabliers de ponts endommagés font également partie de ce programme.

### ZUSAMMENFASSUNG

Der Bericht behandelt das Brückenunterhalt-Programm im japanischen Autobahnnetz. Die Unterhalt- und Instandstellungsarbeiten an Brücken sind ein wichtiger Bestandteil für eine wirksame Nutzung des Autobahnnetzes. Die Schätzung und Instandstellung der beschädigten Brückenbeläge sind in diesem Programm ebenfalls enthalten.



## 1. PREFACE

Japan has a plan for an Express Highway Network of 7,600 km that covers all the areas of its territories. The construction of this expressway network had been entrusted to a single organization that is Nihon Doro Kodan. At the end of 1982, 3,111 km will be in operation and additional 2,738 km will be under construction. Among the portion which has been opened to traffic, the earthwork section, the tunnel section and the bridge section are 86.0%, 2.2% and 11.8% respectively.

During these 20 years since the expressway was opened the deterioration of the expressway structures has become obvious. Accordingly the cost of maintenance and repairment has reached to about 260 million dollars (84,700 dollar/4 lanes.km) per year. The 11.7% of this total maintenance expenses, which is 30.5 million dollars (87,100 dollars/4 lanes.km), is spent for bridge structures. It is quite remarkable that 30% of the total bridge maintenance cost is allocated for the repairment of reinforced concrete bridge decks which are damaged seriously by the heavy traffic.

It is very important to find out in the earliest stage the signs of the damages in the bridge structures in order to take the necessary measures for the repairment. Nihon Doro Kodan is carrying out the inspection patrols under its "Bridge Maintenance System" which enables "the early findings and lower repairment costs".

## 2. OUTLINE OF THE BRIDGE MAINTENANCE SYSTEM

### 2.1 Record plan from the bridge inspection to the repairment

The flow diagram of the maintenance from the bridge inspection to repairment is shown in Fig. 1.

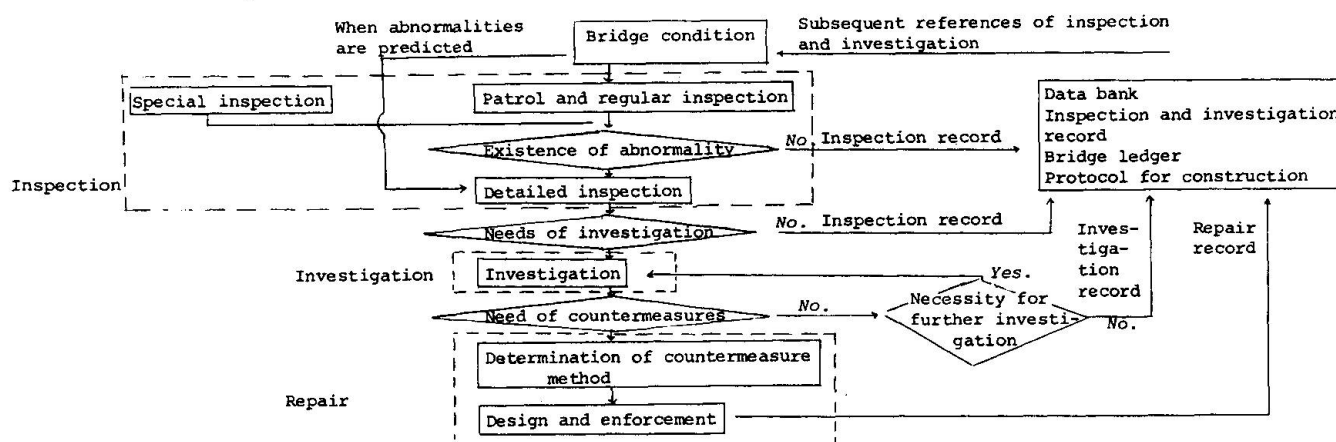


Figure 1. Flow diagram of inspection, investigation and repair works

### 2.2 Outline of bridge patrol, inspection and investigation

Actual conditions of the bridges are grasped through ordinary patrols, inspections, and investigations. The bridge maintenance works are carried out according to the degrees of its damages. The summary of this maintenance works are shown in Table 1.

### 2.3 Filing of records

The inspection results are summarized in a report paper; the construction record and the repairment history are written on the bridge ledger and these are put together in a micro film, stored in the data room. A photocopy from the originals are used in the regular administration. Shortly, together with the establishment of the Computer Center, the information transfer network that connects this Kodan's Head Office with the Operation Bureaus and offices will be developed. This network is utilized presently as an Information Control System that handles any kind and all sorts of information input or output, according to various demands.

	Item	Purpose	Method	Frequency	Personnel
1	Patrol	Early detection of abnormalities and damages in the upper surface of the bridge.	By patrol car; walking as occasion demands.	Once a day	2 persons
2	Regular inspection	Early detection of abnormalities and damages in the whole structure.	Approach to the bridge as near as possible while walking and direct visual inspection or using binoculars.	More than once a year	3 to 4 persons
3	Special inspection	Rapid grasp of bridge conditions in case of earthquakes	Walking or by patrol cars	As occasion demands	3 to 4 persons
4	Detailed inspection	Observe in detail the abnormal places detected during the patrol and inspection and decide the needs for an investigation.	Approach the subject place by means of inspection road, ladder, or construction scaffolding and simple measure by visual inspection.	As occasion demands	3 to 4 persons
5	Investigation	Quantitative grasp of the degree of damages from the detailed inspection results and decide the needs of repairs.	Approach to the subject place by means of special constructed scaffolding and by visual inspection, stripping off, measure, core testings.	As occasion demands	Required personnel

Table 1. Outline of bridge patrol, inspection and investigation

### 3. REINFORCED CONCRETE BRIDGE DECK INSPECTIONS

#### 3.1 Regular inspections

Inspections of the bridge decks are carried out approaching as near as possible, by direct visual inspection or using binoculars for the following items;

1) cracks, 2) scaling off, 3) leakage of water and calciums, 4) reinforcement corruptions, 5) concrete construction joints, 6) cracks on the pavement. The inspections are recorded in the "Inspection and Investigation Record" regarding following items; 1) existence and location of cracks, 2) existence and location of damages other than cracks, 3) needs of a detailed inspections.

#### 3.2 Detailed inspections

##### 3.2.1 Purpose of the detailed inspection

The purpose of the detailed inspection is to judge the needs for an investigation, estimating the condition of the bridge deck damages and degradations by visual inspection and a simple measure, in case of detection of damages and degradations during the regular inspection.

##### 3.2.2 Method of detailed inspection

Taking the deck panel (girder span x deck span) as a single unit, observation shall be carried out and recorded regarding the following items in order to estimate damages and degradations.

- 1) Sketch of main crack locations (cracks bigger than 0.1mm in width)
- 2) Condition of the production of scale out
- 3) Leakage of water and calciums
- 4) Condition of reinforcement corruptions
- 5) Condition of pavement's linear cracks and hexagonal cracks

##### 3.2.3 Record of detailed inspection

The detailed inspection results are written in the "Inspection and Investigation Record" (Fig. 2) and the main points of the damage and degradation condition are recorded as illustrated in Table 2.

##### 3.2.4 Criteria for damage ratings during the inspection

Based on the detailed inspection results, and using the rating criteria shown in Table 3, the rating of the damages in the inspection are made, taking the deck panel (girder span x deck span) as a single unit.



Bridge drawing			
Deck plan			
Deck plan			

Bridge drawing type			
Item	Regular inspection	Detailed inspection	Investigation
	Year M. D.	Y. M. D.	Y. M. D.
Y: year, M: month, D: day.			
(1) Regular inspection record			
Needs for a detailed inspection		Yes or No.	
(Special remarks)			
(2) Estimation of damage degree during detailed inspection			
Damage degree	Deck panel number	Number of panels	
A			
B			
C			
Damage degree	Deck panel number	Number of panels	
IV			
III			
II			
I			
0			

Fig. 2. Inspection and investigation record

Item	Indication method	Item	Indication method
Crack	Continuous lines	Leakage of water	
Scaling out	Continuous lines+dotted lines	Calcium Separation	
Abrasion	Continuous line	Corrosion of reinforcement with openings	
Separation		Pavement cracks	one point dotted lines
Hollows, poor cementations			

Table 2. Classification of damages

Degree of damage	Floor system condition
A	Generation of bidirectional or hexagonal cracks. There are cracks in a surface portion of the pavement. Large generation of calcium separation.
B	Generation of unidirectional cracks, the crack spacing is more than 1 m. There are linear cracks in the pavement. Leakage of water and calcium separation found partly.
C	Generation of unidirectional cracks and crack spacing is more than 1 m. It is almost impossible to confirm the cracks.

Table 3. Criterion for estimating the degree of damage during the inspection (cracks larger than 0.1 mm in width)

#### 4. INVESTIGATION OF THE REINFORCED CONCRETE BRIDGE DECK

##### 4.1 Purpose of the investigation

In this detailed inspection, the deck panels estimated to have more than B rank of damage grade during the inspection (hereinafter called investigation panel) are investigated, the cracks are quantitatively comprised, and then the damage grade is estimated, including the conditions of damage and degradation other than cracks.

The procedure for making damage grade rating during the investigation is given below.

- 1) Confirm the location of main cracks sketched from the inspection results.
- 2) Determine the location of the places for measuring crack density of parts with remarkable crackings for each investigation panel.
- 3) Measure of crack density for cracks over 0.1mm in width, by the Grid Density Method.
- 4) Investigation of the condition of damage and degradation other than cracks, as occasion demands.
- 5) Rating of damage grade during the investigation.

##### 4.2 Investigation of cracks

- 1) Draw a grid lines of 25cm in spacing on the decks bottom surface where the cracks are observed. Then from the number of crossing points, resulting from the intersection of the grid lines and cracks wider than 0.1mm, compute the crack density of the bridge's lateral direction (A) and the bridge's longitudinal direction (B). (Grid Density Method) Fig. 3.
- 2) Plot the crack density diagram as A/B and B/A ratio, and A+B (Fig. 4) for estimating the damage grade.

The classification of repairment methods, according to the damage degrees is given in Table 5.



Damage of degree	Standard Crack density (m/m <sup>2</sup> )	Average spacing (Reduced to bidirectional cracks)	Estimation of deck conditions
0	0 - 1.0 up to	200cm and more	Unidirectional cracks with spacing larger than 1m founded partly. The bidirectional crack density is still small and the load capacity of the deck is considered to be still high.
I	1.0 - 3.0 from to up to	200cm - 70cm	There is generation of unidirectional cracks, but the capacity as unidirectional slab is still expected
II	3.0 - 5.0 from to up to	70cm - 40cm	Generation of bidirectional cracks and the deck capacities decline in both directions. The leakage of water and the calcium separation are occasionally observed.
III	5.0 - 7.0 from to up to	40cm - 30cm	The bidirectional cracks develop with the crack corner's wearing and partly scaling out. The deck capacity drop remarkably in both directions. The leakage of water and the calcium separation become prominent. The cracks in the upper surface of the deck develop to produce concrete blocks.
IV	7.0 from to	30cm and less	The crack density reach the limit in both directions, and the load is supported almost only by the reinforcement grid effect, cracks are widened, and abrasion and calcium separation with muddy water are observed. When they progress, they cause hollowing out and large scaling out. The damage of the upper surface of the deck is also progressed, and the pavement starts to peel off in some parts.

Table 4. Criterion for estimating the degree of damage during the investigation (cracks larger than 0.1 mm in width)

○ It is advisable to make countermeasures ◎ Problem in need of countermeasures		
Degree of damage	Repair plan	Method of construction
① ② ③ ④	Rehabilitation measures	Stringer setting method, steel plate adhesion method, additional concreting method, spraying method, FRP method (concrete decks of steel and concrete bridges)
⑤ ⑥	Plan to avoid hollowing out	Steel plate adhesion method, FRP method
⑦	Replacement	Resin concrete, super high-early concrete, Reinforced concrete deck
	Total replacement	Steel deck, steel orthotropic deck
⑧ ⑨ ⑩	Water proof plan	Resin grouting method, water proof sheet method

Table 5. Classification of repair method according to the degree of damages

## 6. FUTURE SUBJECT

As the bridge deteriorations proceeds with the passage of years, it is necessary to improve above-mentioned "Bridge Maintenance System" furthermore. It is also very important to clarify the bridge's deterioration mechanism through theoretical studies in order to establish the proper repairment methods. Further, the urgent needs are pointed out with regard to the development of automatic equipment for estimating the degree of soundness of the bridge structures and the systematic compilation measures of the inspection and investigation records.

## REFERENCE

- 1) Main points for maintenance and repair (Compilation of Bridges and Floor Systems) Nihon Doro Kodan, 1973.