

Zeitschrift: IABSE structures = Constructions AIPC = IVBH Bauwerke
Band: 13 (1989)
Heft: C-48: Structures in Portugal

Artikel: "Caixa Geral de Depósitos" new headquarters, Lisbon (Portugal)
Autor: Botto, A.
DOI: <https://doi.org/10.5169/seals-21556>

Nutzungsbedingungen

Die ETH-Bibliothek ist die Anbieterin der digitalisierten Zeitschriften auf E-Periodica. Sie besitzt keine Urheberrechte an den Zeitschriften und ist nicht verantwortlich für deren Inhalte. Die Rechte liegen in der Regel bei den Herausgebern beziehungsweise den externen Rechteinhabern. Das Veröffentlichen von Bildern in Print- und Online-Publikationen sowie auf Social Media-Kanälen oder Webseiten ist nur mit vorheriger Genehmigung der Rechteinhaber erlaubt. [Mehr erfahren](#)

Conditions d'utilisation

L'ETH Library est le fournisseur des revues numérisées. Elle ne détient aucun droit d'auteur sur les revues et n'est pas responsable de leur contenu. En règle générale, les droits sont détenus par les éditeurs ou les détenteurs de droits externes. La reproduction d'images dans des publications imprimées ou en ligne ainsi que sur des canaux de médias sociaux ou des sites web n'est autorisée qu'avec l'accord préalable des détenteurs des droits. [En savoir plus](#)

Terms of use

The ETH Library is the provider of the digitised journals. It does not own any copyrights to the journals and is not responsible for their content. The rights usually lie with the publishers or the external rights holders. Publishing images in print and online publications, as well as on social media channels or websites, is only permitted with the prior consent of the rights holders. [Find out more](#)

Download PDF: 31.07.2025

ETH-Bibliothek Zürich, E-Periodica, <https://www.e-periodica.ch>



5. «Caixa Geral de Depósitos» New Headquarters, Lisbon (Portugal)

Owner: Caixa Geral de Depósitos, Portugal
Architect: Arsénio Cordeiro
Engineers: LUSOTECNA and Consultores Técnicos Industriais
Contractors: Soares da Costa SA, Teixeira Duarte SA and SOMECE
Works duration: 5 years
Service date: 1991
Construction area: 210 000 m²

General

Caixa Geral de Depósitos (CGD) is a Portuguese State Credit Bank. Among other activities it attracts savings, in the form of deposits. CGD is the leader in the Portuguese banking system. According to the volume of deposits, it occupies the 5th place among the biggest saving banks of the European Community and the 10th place at a world level. Due to the fact that its departments are scattered through several buildings all over Lisbon, a decision was taken in order to concentrate them. For this purpose, the construction of a very modern and spacious building is taking place in Campo Pequeno, a central zone of the city. The designers were chosen, through a limited tender, out of a selection of 10 partnerships composed of national consultants, most of them in association with foreign consultants.

Structures

The buildings will be set up on a site with an area of approximately 37 000 m². The gross floor area will be about 210 000 m², distributed through 15 floors. The plan area is about 21 000 m², with a maximum length of 250 meters.

There are six floors below street level. This zone is encircled by an earth-sustaining surrounding wall, of «Berlin» and «diaphragm» types, which is linked to the structures of the buildings at each floor level.

This wall as well as the structures of the buildings are made of reinforced concrete. Fungiform slabs of plastic waffle moulds lying on columns 8,10 m spaced form the main structures.

These structures are composed of frames following orthogonal directions, with very strong staircases and lift shafts located in order to avoid excessive distance between them. The centroid structures, which are limited by expansion joints, were made to coincide as much as possible, thus diminishing possible distabilizing torsions in the whole structure due to an earthquake.

The materials used in the superstructure and foundations are B25 and B40 concrete and A400ER and A500 steel, according to Portuguese regulations.

The structural conception obtained will permit a great flexibility in the utilization of the spaces thus enabling a natural evolution of the services.

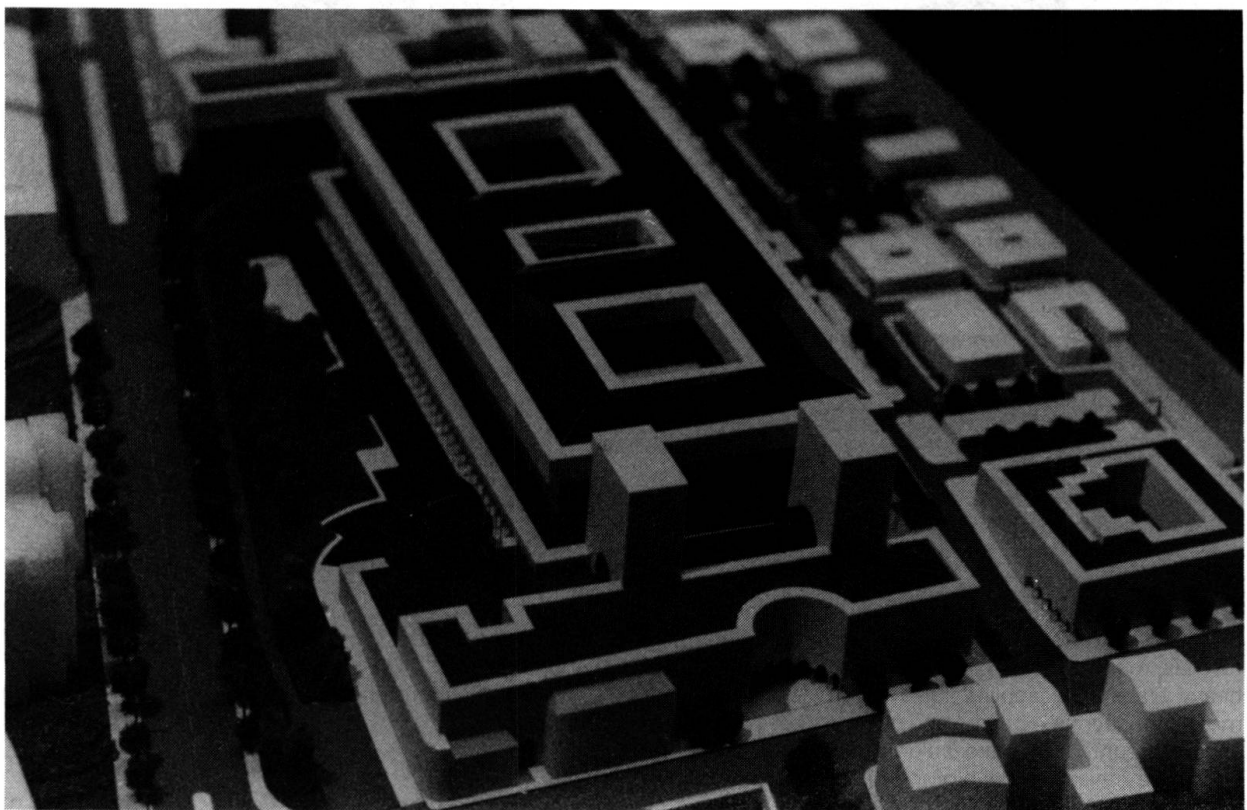


Fig. 1 Model of the building



Fig. 2 General view of the site construction

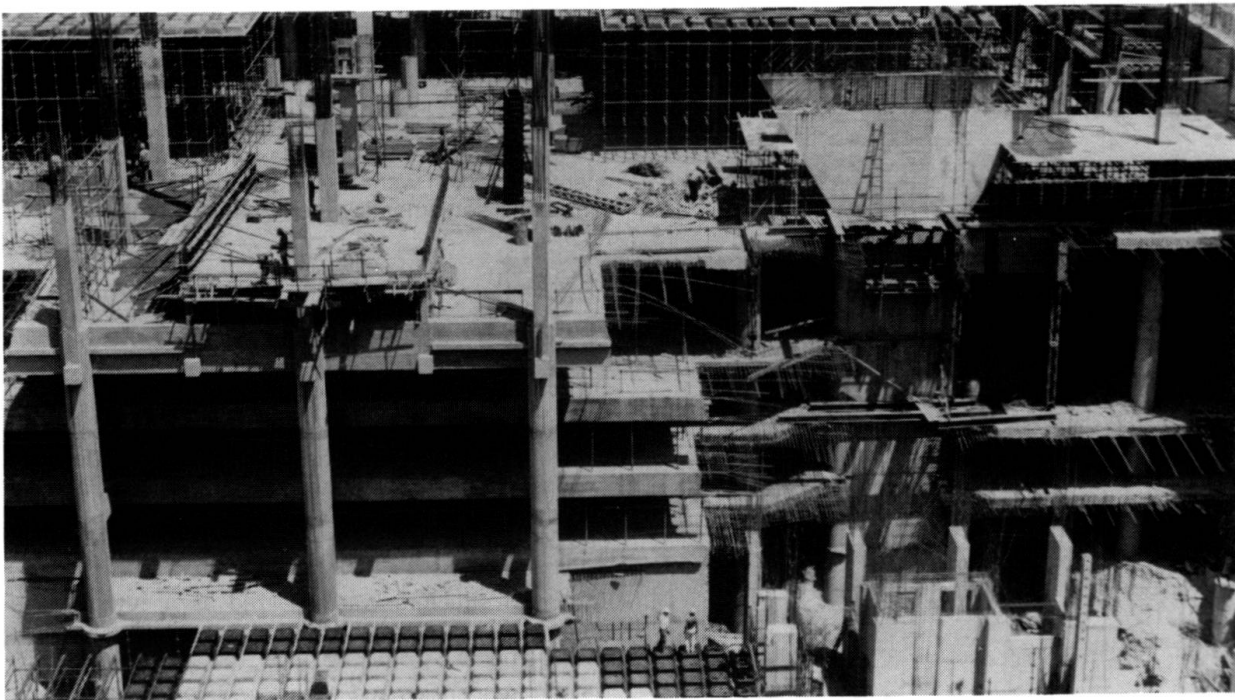


Fig. 3 Works in progress

Construction works

The undertaking is being carried out by several contractors who were selected through successive tenders within the countries of the EC. New invitations for more tenders, concerning the technical installations which are supposed to equip the buildings, will be advertised in due course.

The whole enterprise should be accomplished by the end of 1991, that is to say, practically 5 years after the beginning of the works.

(A. Botto)