

Zeitschrift: IABSE structures = Constructions AIPC = IVBH Bauwerke
Band: 12 (1988)
Heft: C-44: Structures in Finland

Artikel: Tampere main library, Tampere (Finland)
Autor: [s.n.]
DOI: <https://doi.org/10.5169/seals-20908>

Nutzungsbedingungen

Die ETH-Bibliothek ist die Anbieterin der digitalisierten Zeitschriften auf E-Periodica. Sie besitzt keine Urheberrechte an den Zeitschriften und ist nicht verantwortlich für deren Inhalte. Die Rechte liegen in der Regel bei den Herausgebern beziehungsweise den externen Rechteinhabern. Das Veröffentlichen von Bildern in Print- und Online-Publikationen sowie auf Social Media-Kanälen oder Webseiten ist nur mit vorheriger Genehmigung der Rechteinhaber erlaubt. [Mehr erfahren](#)

Conditions d'utilisation

L'ETH Library est le fournisseur des revues numérisées. Elle ne détient aucun droit d'auteur sur les revues et n'est pas responsable de leur contenu. En règle générale, les droits sont détenus par les éditeurs ou les détenteurs de droits externes. La reproduction d'images dans des publications imprimées ou en ligne ainsi que sur des canaux de médias sociaux ou des sites web n'est autorisée qu'avec l'accord préalable des détenteurs des droits. [En savoir plus](#)

Terms of use

The ETH Library is the provider of the digitised journals. It does not own any copyrights to the journals and is not responsible for their content. The rights usually lie with the publishers or the external rights holders. Publishing images in print and online publications, as well as on social media channels or websites, is only permitted with the prior consent of the rights holders. [Find out more](#)

Download PDF: 20.08.2025

ETH-Bibliothek Zürich, E-Periodica, <https://www.e-periodica.ch>



8. Tampere Main Library, Tampere (Finland)

Owner:	<i>City of Tampere</i>
Architect:	<i>Raili and Reima Pietilä</i>
Structural engineers:	<i>A-Insinöörit Ky, Consulting engineers, Tampere</i>
Contractor:	<i>City of Tampere, Housing construction department</i>
Building time:	<i>36 months</i>
Completion date:	<i>August 1986</i>

Floor area:	Ground floor	4424 m ²
	Main floor	4722 m ²
	Mezzanine	1665 m ²
	Top floor	414 m ²
Total:		11225 m ²
Netfloor area of the library:	6630 m ²	
Netfloor area of other municipal offices:	856 m ²	

The new main library in the city of Tampere was completed in the autumn of 1986, well on schedule. Designed by Raili and Reima Pietilä, who describe it as a «work of spatial art», it is an unusual, domed building of stone, copper and glass.

Seen from above, the library building is shaped like a bird, a wood grouse. There is not a rectilinear surface in sight. It is all arches, domes vaults and undulations, which means that everything had to be tailor-made; hardly any standard structures could be used. There were quite a number of technical challenges along the way.

The building has a total floor area of 11225 m². It is divided into four expansion joint areas. The basement floor partly rests on piling. Intermediate floors are mainly of in situ reinforced concrete. The projecting parts in the main library are of prestressed concrete. Upper floors have partly conventional structures and partly special arch and dome structures. The main hall roof is arched with a rib and vault construction of prefabricated arch units and in situ concrete vaulting envelopes.

The main foyer hall dome, which has an 11° inclination to the south, is constructed of a small inner circumferential ring beam and a larger circumferential ring beam. Between these two beams are twenty-four sectors consisting of dome segmental units made of reinforced concrete. The dome is thus formed by the conjunction of two circumferential beams constructed in situ with the prefabricated units in between.

The interior of the dome is painted blue to enhance daylight and accentuate the impression of spaciousness.

The basement cladding and the steps to the library are of Viborgite granite. The facades and curving eaves are of copper, as are also the arched sections of the roofing and the dome. About 4700 m² of copper has been used.

In addition to copper sheeting, bitumen felt has been used as a roofing material. On the flat roof the insulation is mainly of thermal chippings and bitumen felt. The arch and other roofing areas are insulated with mineral wool and wind-resistant sheeting. Condensed water insulation is provided by a ventilated timber cavity substructure.

Tampere Main Library will be a new landmark and a work of spatial art expressing the modern environmentalistic spirit.

(—)

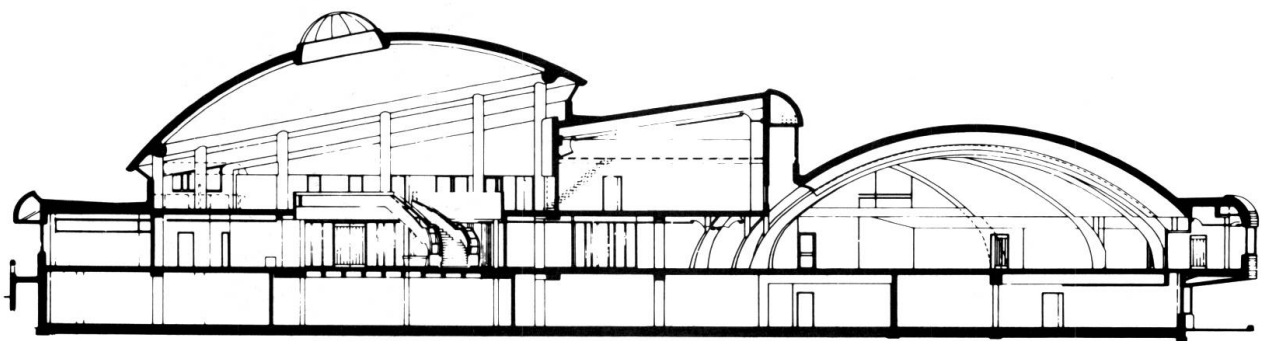


Fig. 1 Section



Fig. 2 Air Photograph



Fig. 3 Facade