

**Zeitschrift:** IABSE structures = Constructions AIPC = IVBH Bauwerke  
**Band:** 11 (1987)  
**Heft:** C-40: Structures in France

## Werbung

### Nutzungsbedingungen

Die ETH-Bibliothek ist die Anbieterin der digitalisierten Zeitschriften auf E-Periodica. Sie besitzt keine Urheberrechte an den Zeitschriften und ist nicht verantwortlich für deren Inhalte. Die Rechte liegen in der Regel bei den Herausgebern beziehungsweise den externen Rechteinhabern. Das Veröffentlichen von Bildern in Print- und Online-Publikationen sowie auf Social Media-Kanälen oder Webseiten ist nur mit vorheriger Genehmigung der Rechteinhaber erlaubt. [Mehr erfahren](#)

### Conditions d'utilisation

L'ETH Library est le fournisseur des revues numérisées. Elle ne détient aucun droit d'auteur sur les revues et n'est pas responsable de leur contenu. En règle générale, les droits sont détenus par les éditeurs ou les détenteurs de droits externes. La reproduction d'images dans des publications imprimées ou en ligne ainsi que sur des canaux de médias sociaux ou des sites web n'est autorisée qu'avec l'accord préalable des détenteurs des droits. [En savoir plus](#)

### Terms of use

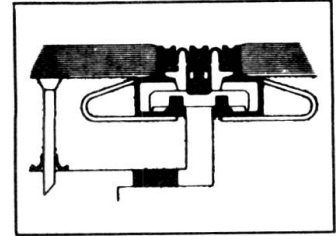
The ETH Library is the provider of the digitised journals. It does not own any copyrights to the journals and is not responsible for their content. The rights usually lie with the publishers or the external rights holders. Publishing images in print and online publications, as well as on social media channels or websites, is only permitted with the prior consent of the rights holders. [Find out more](#)

**Download PDF:** 27.11.2025

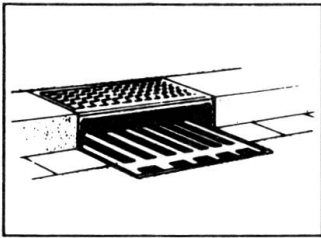
**ETH-Bibliothek Zürich, E-Periodica, <https://www.e-periodica.ch>**



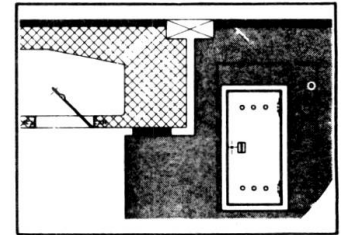
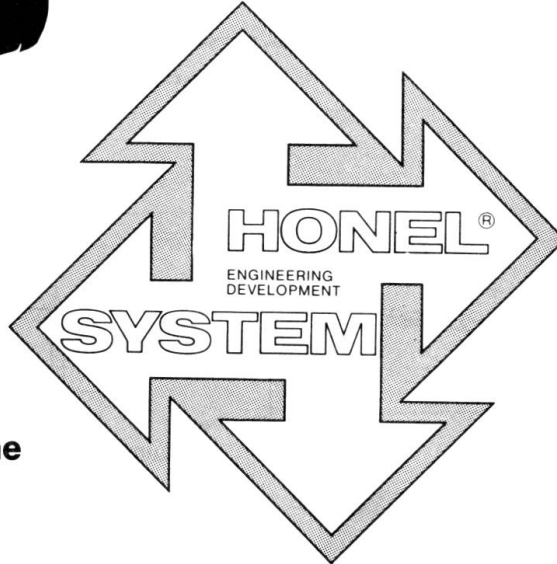
**Belags-Sickerwasser-Ableiter**  
*Subsurface Seepage.*  
**Evacuations des eaux et aérations.**  
*Ductos de agua de filtración para calzadas.*



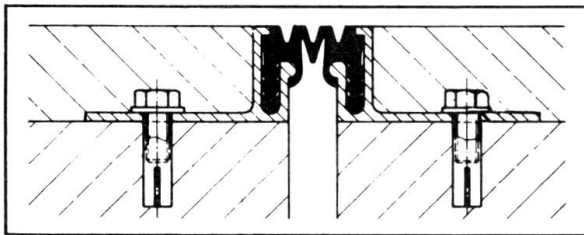
**Fahrbahn-Übergangs-Konstruktionen.**  
*Expansion joints.*  
**Raccordements de chaussées**  
*Sistemas de juntas de dilatación.*



**Entwässerungs-Systeme**  
*Surface drainage*  
**Evacuations des eaux**  
*Pozos de drenaje*

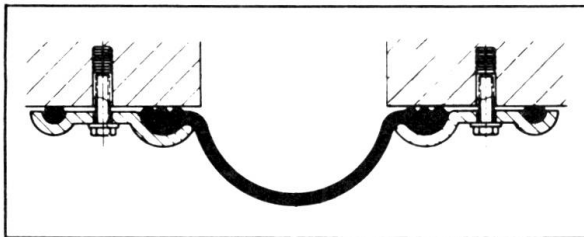
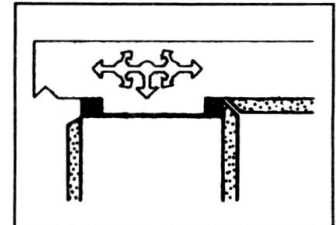


**Hohlraumschalungen**  
**Einstiegsluken + Türen**  
*Formwork + Moulds*  
*Access openings*  
**Ouvertures d'entrée**  
*Aberturas de entrada*



**Fugendichtungen im Hoch- + Tiefbau**  
*Joint seals + Joint profilés*  
**Sellos para juntas**

**Auflager**  
*Structural*  
*Bearings*  
**Appuis**  
*Apoyos*



**Pressen + Pumpen**  
*Hydraulic jacks*  
**Verins + Pompes**  
*Prensas + bombas*



**heinz honegger ag**

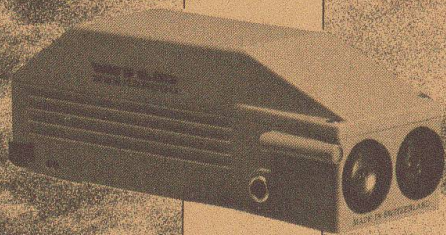
CH-8427 Rorbas ZH Switzerland  
 Tel. 01 - 865 11 77, Telex 52844

**Vertretungs- und Lizenzvergabe:**  
 Honel-Holding SA  
 Sonnmattestrasse 6  
 CH-8180 Bülach, Switzerland  
 Phone 01/860 89 43

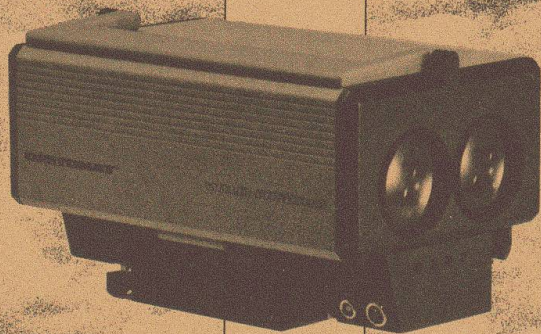


## HANDY FEATHERWEIGHTS

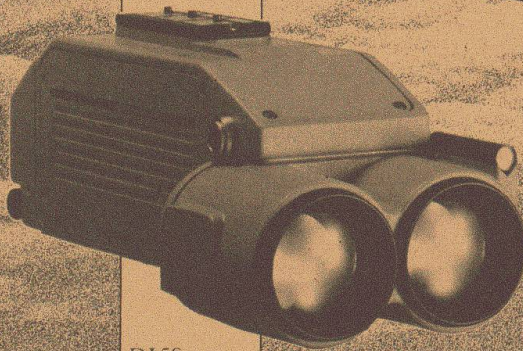
## WITH BREAKTHROUGH PERFORMANCE



DI1000



DI3000  
DIOR 3002



DI55

**Wild DISTOMAT™ EDMs are not only extremely light and handy, but every one of them is at the top of its class.**

For routine surveying, the **Wild DI1000** is the EDM with outstanding performance. Its compact size, performance, and typical Wild accuracy are the key to its success. This minor master weighs only 600 grams (1.3 lb) and takes just 5 seconds to measure up to 1000m.

For medium range, there is the **Wild DI55**, the highly accurate DISTOMAT (3mm + 2ppm).

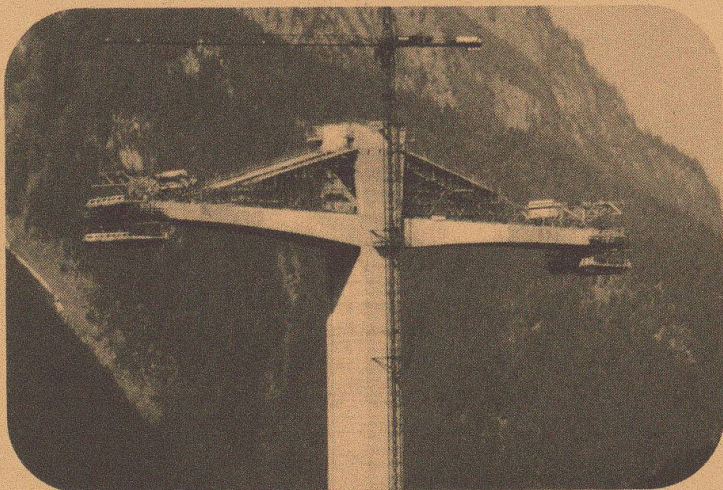
A typical measurement takes 4 seconds. In tracking mode, the distance is measured and displayed every second. The DI55 has a range of 5km and weighs only 1.1 kg (2.4lb).

For long-range applications, use the trendsetting **Wild DI3000**, the DISTOMAT with unprecedented performance, which measures distances up to 14km in only 0.8 seconds. With a standard deviation of 3mm to 5mm + 1ppm, this DISTOMAT is suitable for all types of surveying tasks and special non-geodetic applications. The DI3000 weighs only 1.7kg (3.75lb).

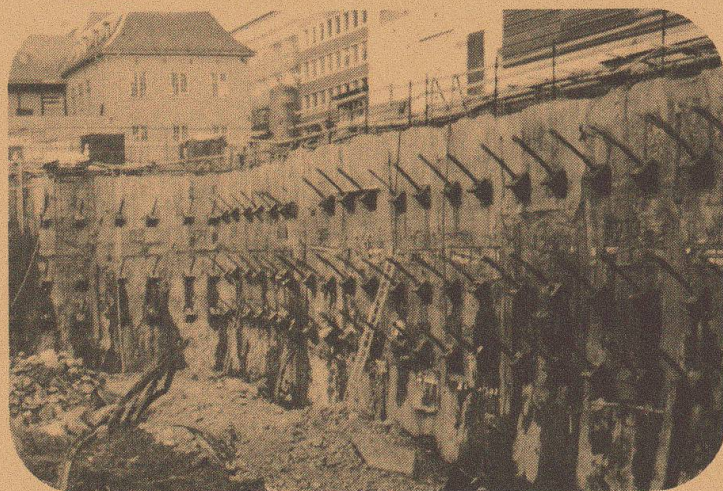
The Wild DIOR3002 is a special version of the DI3000, for measuring distances up to 250m without the need of a reflector. That's the fast, easy way to survey even inaccessible points.

All three Wild DISTOMATs, the DI1000, DI55, and DI3000 fit any optical or electronic Wild theodolite. That makes your equipment adaptable to any task at little cost.

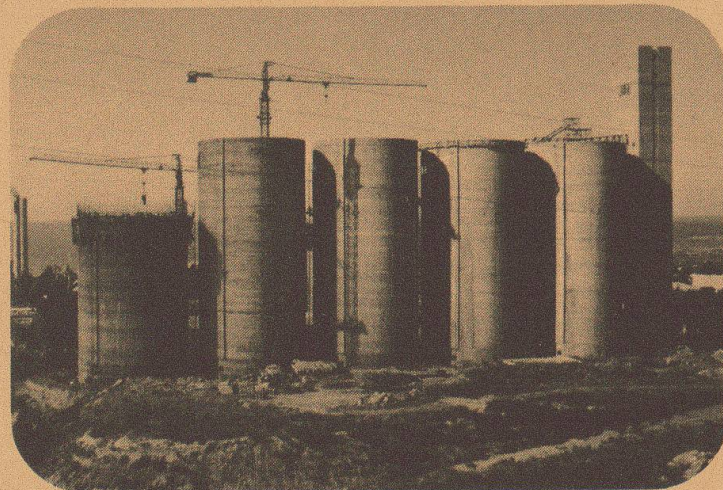
Ask for detailed literature. ■



**the symbol for:**



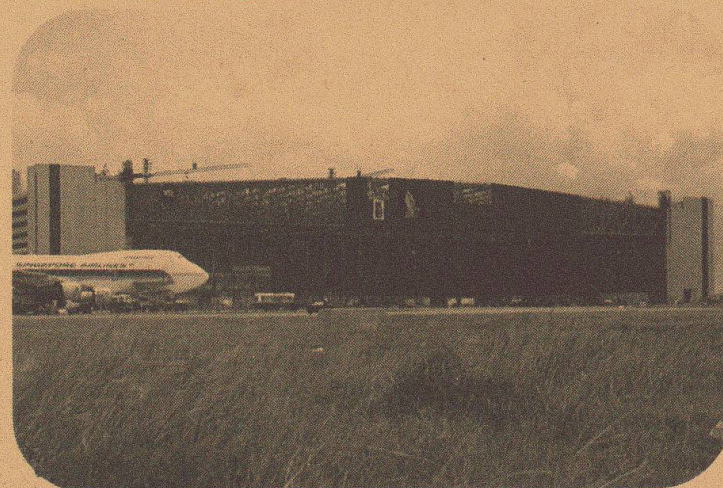
- **Post-tensioning**
- **Soil and Rock Anchors**
- **Slipforming**
- **Heavy Rigging**



Please send me detailed information on:

- Post-tensioning \_\_\_\_\_
- Soil and Rock Anchors \_\_\_\_\_
- Slipforming \_\_\_\_\_
- Heavy Rigging \_\_\_\_\_
- Other \_\_\_\_\_

send this coupon to the address below or to the next VSL Representative



**VSL INTERNATIONAL LTD**  
**Könizstrasse 74**  
**3001 Berne/Switzerland**  
**Phone 031 46 28 33**  
**Telex 911755**

Representatives in:  
Australia, Austria, Belgium, Brazil, Canada, Denmark, Finland, France, FR Germany, Greece, Honduras, Hong Kong, Indonesia, Iran, Ireland, Italy, Japan, Korea, Kuwait, Malaysia, Netherlands, Norway, Panama, Peru, Philippines, Portugal, Saudi Arabia, Singapore, South Africa, Sweden, Switzerland, Taiwan, Turkey, United Kingdom, USA, Venezuela.