

Zeitschrift: IABSE structures = Constructions AIPC = IVBH Bauwerke
Band: 10 (1986)
Heft: C-37: Protective structures: Part I

Werbung

Nutzungsbedingungen

Die ETH-Bibliothek ist die Anbieterin der digitalisierten Zeitschriften auf E-Periodica. Sie besitzt keine Urheberrechte an den Zeitschriften und ist nicht verantwortlich für deren Inhalte. Die Rechte liegen in der Regel bei den Herausgebern beziehungsweise den externen Rechteinhabern. Das Veröffentlichen von Bildern in Print- und Online-Publikationen sowie auf Social Media-Kanälen oder Webseiten ist nur mit vorheriger Genehmigung der Rechteinhaber erlaubt. [Mehr erfahren](#)

Conditions d'utilisation

L'ETH Library est le fournisseur des revues numérisées. Elle ne détient aucun droit d'auteur sur les revues et n'est pas responsable de leur contenu. En règle générale, les droits sont détenus par les éditeurs ou les détenteurs de droits externes. La reproduction d'images dans des publications imprimées ou en ligne ainsi que sur des canaux de médias sociaux ou des sites web n'est autorisée qu'avec l'accord préalable des détenteurs des droits. [En savoir plus](#)

Terms of use

The ETH Library is the provider of the digitised journals. It does not own any copyrights to the journals and is not responsible for their content. The rights usually lie with the publishers or the external rights holders. Publishing images in print and online publications, as well as on social media channels or websites, is only permitted with the prior consent of the rights holders. [Find out more](#)

Download PDF: 21.08.2025

ETH-Bibliothek Zürich, E-Periodica, <https://www.e-periodica.ch>

Dillingen Steel Works Prefabrication Process

300 years have passed since **Dillingen's** beginnings as a steel maker. The spirit of the craftsman which was a key factor in the growth of the company from a humble shop to its modern day size, is still part of the vitality of the company.

Using the company's background as one of the leading producers of **reversing mill heavy plates**, the processing department is able to offer all the advantages of both a manufacturer and prefabricator of heavy plate.

Prefabricated items are supplied in a wide range of products, to the closest tolerances in the plate field, and with special designs to suit the needs of those customers who may not be equipped to process or handle such heavy and/or wide plates. (Max. width 5200 mm or – 205").

Included in the processing facilities and products are:

- Flame cutting machines for sketch oxy cut parts, such as **bottom annular ring segments** or **roof plates** for

self-supporting umbrella or ellipsoidal roofs as well as **compression bars** and **other accessories**.

- An edge milling machine to **square and bevel** plates for weld preparation with all types of grooves and **edge styles**. Up to 4500 mm wide and 19000 mm long.
- Several pyramid roll-bending machines for cold or hot forming of cylindrical steel **shell plates** for **storage vessels, storage tanks, stack liners, and silos**.
- A 2250 MT hydraulic press for the production of single piece and multi-segment dished **heads, spherical segments** as well as a wide variety of cold or hot formed shapes.
- Surface treatment facilities for automatic or hand shot blasting and pre-priming are available.

Dillingen's manufacturing department has the ability to produce all kinds of prefabricated material for petroleum storage tanks, refinery vessels, elevated water tanks, storage tanks and related operating systems for cryogenic and low temperature gases.

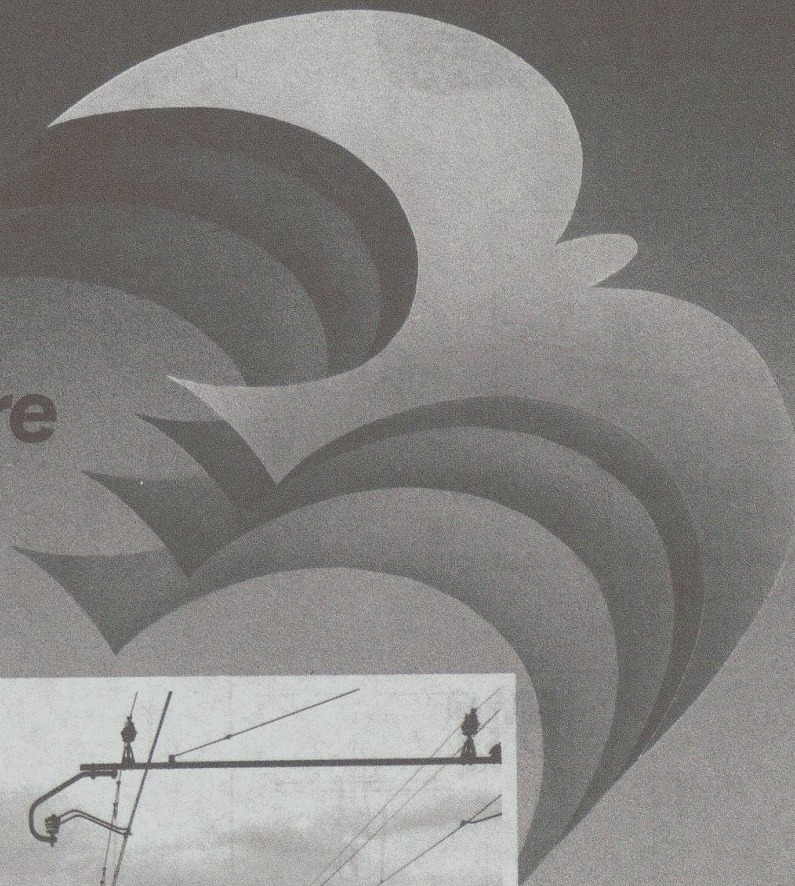
For more information phone
or write to:

AG der DILLINGER HÜTTENWERKE

D-6638 Dillingen/Saar – P. B. 1580
Phone (0) 6831 - 472242
Telex 443711
Telecopy (0) 6831 - 472212

LONARDI

*per
progettare
e costruire
senza vincoli*

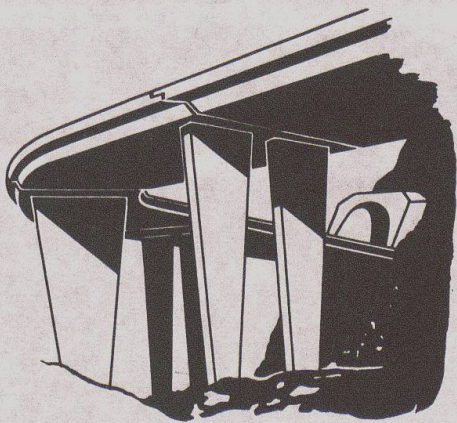


Cavalcavia ferroviario - n. 3 luci da 50 mt. - peso ton. 250

TRAVI SALDATE
STRUTTURE IN ACCIAIO
PER COMPLESSI CIVILI
ED INDUSTRIALI
STRUTTURE IN ACCIAIO
PER CAVALCAVIA E PONTI
STRUTTURE SPECIALI



LONARDI S.p.a. - 37029 S. PIETRO INCARIANO (VR) - TEL. 045/7701299 - TELEX 480369 LONCOS-I

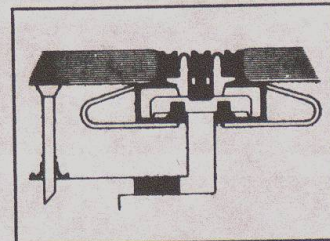


**Belags-Sickerwasser-
Ableiter**

Subsurface Seepage.

**Evacuations des eaux
et aérations.**

*Ductos de agua de
filtración para calzadas.*

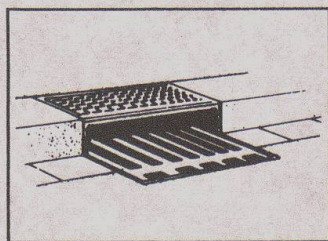


**Fahrbahn-Übergangs-
Konstruktionen.**

Expansion joints.

**Raccordements de
chausées**

*Sistemas de juntas
de dilatación.*

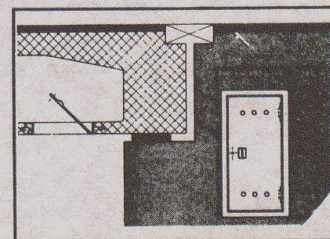
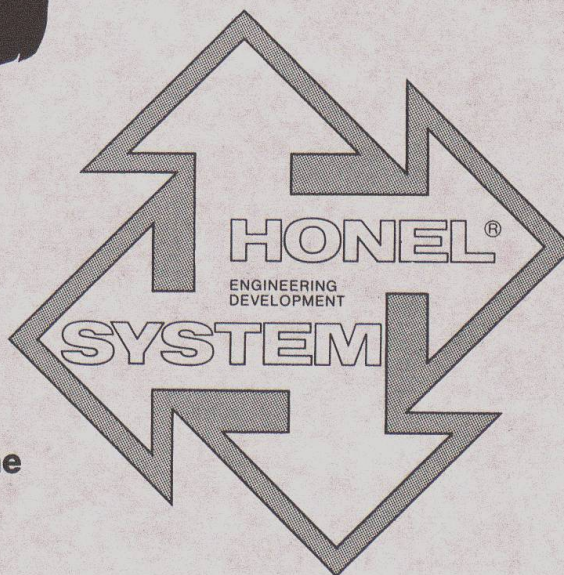


Entwässerungs-Systeme

Surface drainage

Evacuations des eaux

Pozos de drenaje



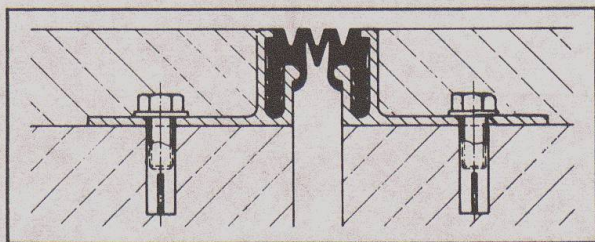
**Hohlraumschalungen
Einstiegsluken + Türen**

Formwork + Moulds

Access openings

Ouvertures d'entrée

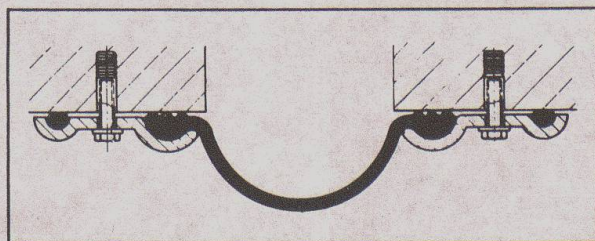
Aberturas de entrada



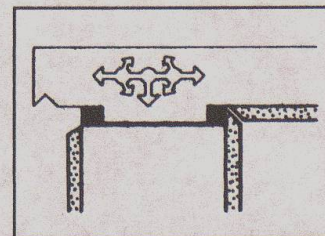
Fugendichtungen im Hoch- + Tiefbau

Joint seals + Joint profilés

Sellos para juntas



**Auflager
Structural
Bearings
Appuis
Apoyos**



Pressen + Pumpen

Hydraulic jacks

Verins + Pompes

Prensas + bombas

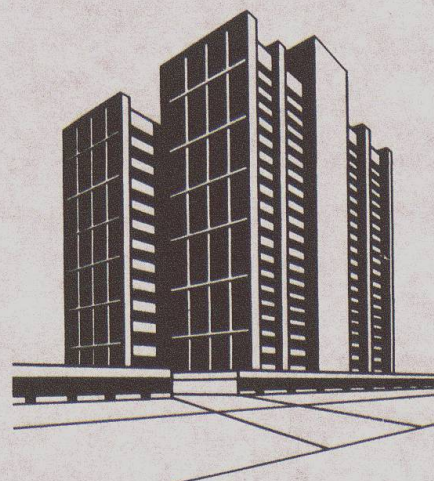


heinz honegger ag

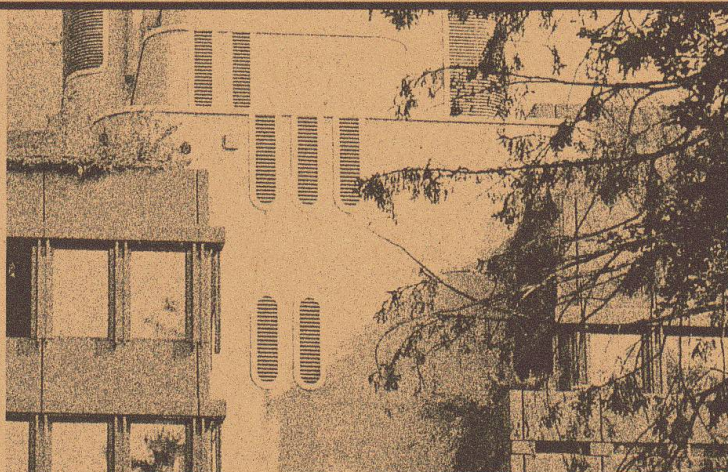
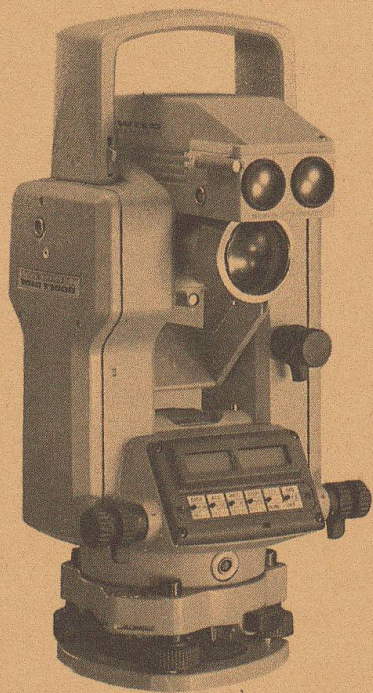
CH-8427 Rorbas ZH Switzerland
Tel. 01 - 865 11 77, Telex 52844

Vertretungs- und Lizenzvergabe:

Honel-Holding SA
Sonnmattstrasse 6
CH-8180 Bülach, Switzerland
Phone 01/860 89 43



IF THIS COMBINATION WERE YOURS, WHAT WOULD CHANGE?



You would be able to obtain readings of angles, distance, and height difference, instantly, digitally, to 0.001 gon and 1 mm accuracy.

You would be able to measure angles for seven hours at a stretch, or 250x angles and distance, without needing an external battery.

You could be instantly ready to measure angles (anticlockwise if required) without time-wasting initialization.

You would be able to work faster and more competitively than ever before.

With a GRE 3 connected, you could measure and record at the touch of a single key.

You would no longer need to have fieldbook entries copied out at the office.

With an electronic tachometer combination weighing only 7 kg, you could cope with any task.

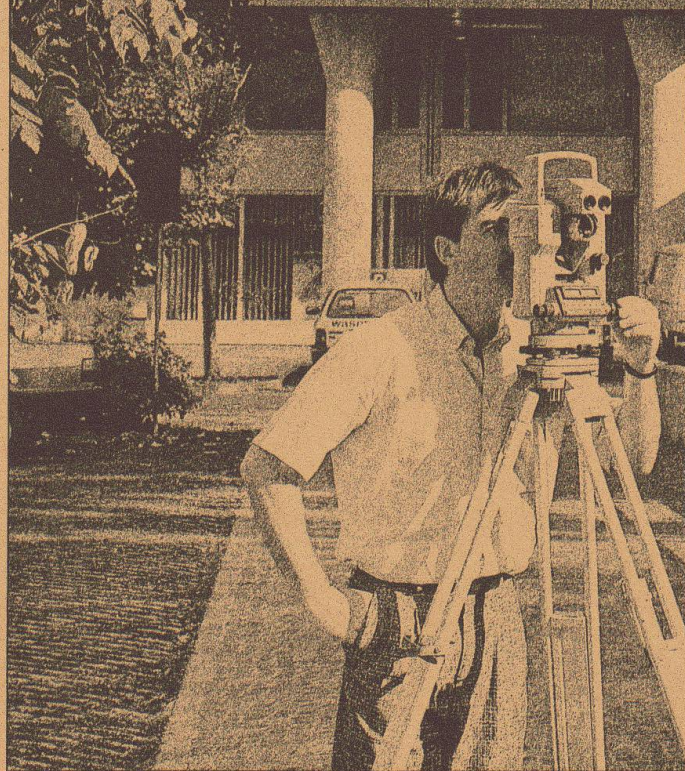
You could also solve complex problems directly in the field.

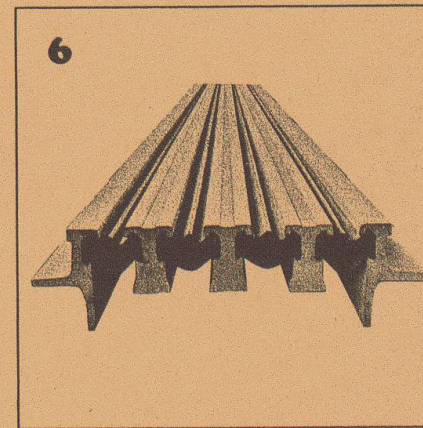
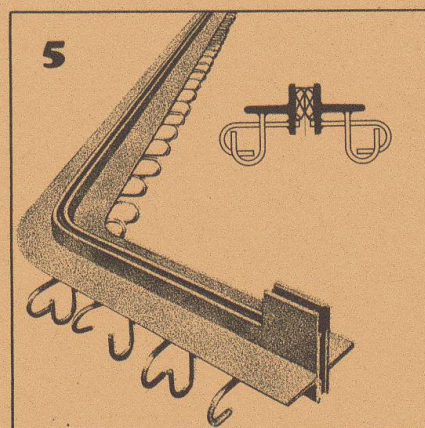
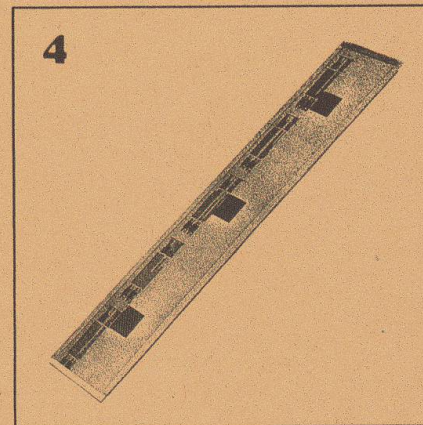
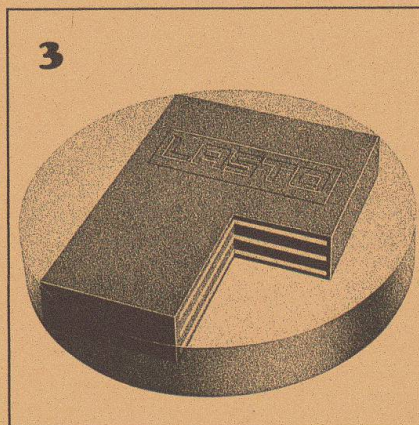
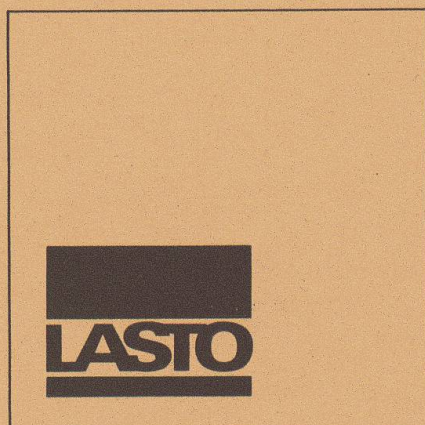
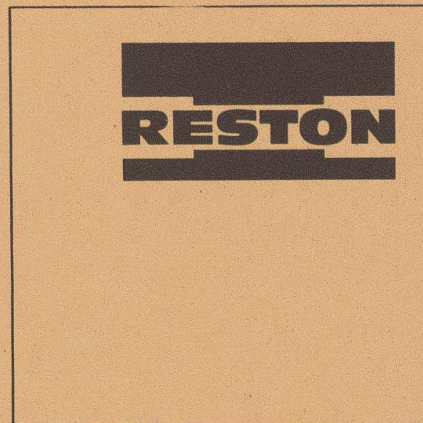
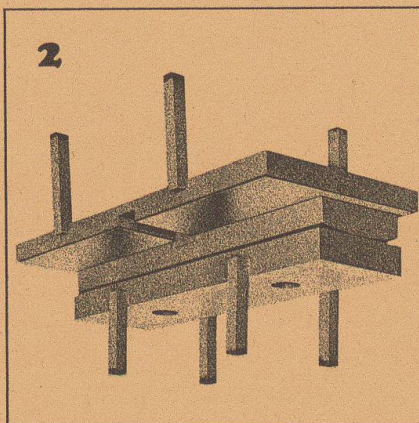
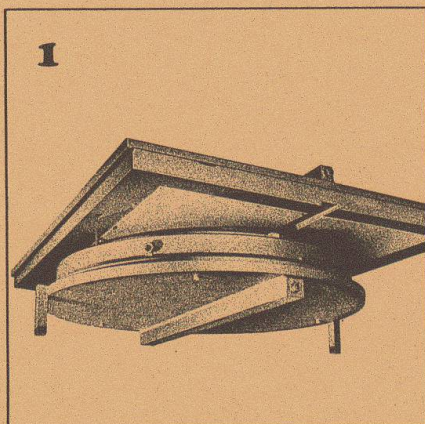
And all your existing Wild theodolite accessories would fit the T1000.

Your measurements would be still more accurate and even more reliable.

You would have more time for other things.

Ask for your documentation right away: on the Wild T1000 THEOMAT theodolite, the Wild DI1000 DISTOMAT, and the Wild GRE 3 electronic data terminal. ■





1

RESTON Pot Sliding Bearings are highly suitable for installation in bridge structures. They feature a low-profile design, low weight and high loading capacity.

2

RESTON Linear Tilting and Sliding Bearings are a combination of normal linear tilting bearings and PTFE sliding bearings and are suitable for installation in bridge structures.

3

LASTO-BLOCK Bearings are suitable for building, civil engineering and bridge construction applications. Their simple form allows easy installation.

4

LASTO-STRIP Bearings for Buildings were especially developed for building constructions. They are particularly suitable for movement compensation between concrete slabs and load-supporting walls and prevent structural cracking.

5

TENSA-ACME Roadway Construction Joints are highly suitable for installation in traffic levels (parking lots, bridges, airport areas etc.). Dilatation up to 60 mm.

6

TENSA-LASTIC Roadway Construction Joints meet all the requirements that can be made in bridge engineering of a modern joint design. They are rugged and watertight. Dilatation range 60 mm and bigger.

PROCEQ SA
Riesbachstrasse 57
CH-8034 Zurich

proceq

Phone: 01/47 7800
TeleX 53357 proce ch