

**Zeitschrift:** IABSE structures = Constructions AIPC = IVBH Bauwerke  
**Band:** 9 (1985)  
**Heft:** C-35: Energy conscious buildings

**Artikel:** Briarcliff House, Farnborough, Hampshire (UK)  
**Autor:** Brandenburger, J.  
**DOI:** <https://doi.org/10.5169/seals-19438>

### **Nutzungsbedingungen**

Die ETH-Bibliothek ist die Anbieterin der digitalisierten Zeitschriften auf E-Periodica. Sie besitzt keine Urheberrechte an den Zeitschriften und ist nicht verantwortlich für deren Inhalte. Die Rechte liegen in der Regel bei den Herausgebern beziehungsweise den externen Rechteinhabern. Das Veröffentlichen von Bildern in Print- und Online-Publikationen sowie auf Social Media-Kanälen oder Webseiten ist nur mit vorheriger Genehmigung der Rechteinhaber erlaubt. [Mehr erfahren](#)

### **Conditions d'utilisation**

L'ETH Library est le fournisseur des revues numérisées. Elle ne détient aucun droit d'auteur sur les revues et n'est pas responsable de leur contenu. En règle générale, les droits sont détenus par les éditeurs ou les détenteurs de droits externes. La reproduction d'images dans des publications imprimées ou en ligne ainsi que sur des canaux de médias sociaux ou des sites web n'est autorisée qu'avec l'accord préalable des détenteurs des droits. [En savoir plus](#)

### **Terms of use**

The ETH Library is the provider of the digitised journals. It does not own any copyrights to the journals and is not responsible for their content. The rights usually lie with the publishers or the external rights holders. Publishing images in print and online publications, as well as on social media channels or websites, is only permitted with the prior consent of the rights holders. [Find out more](#)

**Download PDF:** 02.04.2026

**ETH-Bibliothek Zürich, E-Periodica, <https://www.e-periodica.ch>**



## 7. Briarcliff House, Farnborough, Hampshire (UK)

**Owner:** Imperial Group Pension Trust Limited  
**Occupier:** Lesli & Godwin Group Limited  
**Architects + Engineers + Quantity Surveyors:** Arup Associates  
**Management Contractor:** John Laing Management Contractors Limited  
**Total Area:** 9,417 Square Metres  
**Contract Period:** May 1981 – February 1983

The building for the Imperial Group Pension Trust Limited has a total area of 10000 square metres and consists of three office floors above ground level. The building abuts the Kingsmead Shopping Centre and at ground floor level it incorporates a pedestrian shopping mall with lettable space for shops on either side.

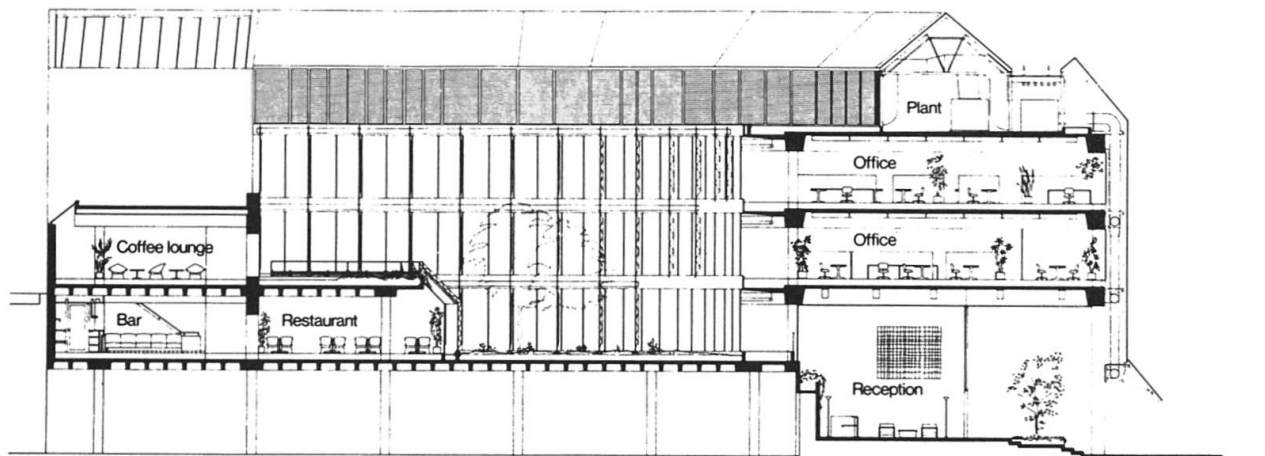
The building is planned in the form of a 'U' which closely follows the southern site boundaries and encloses a roof

garden at first floor level in which the staff restaurant is located.

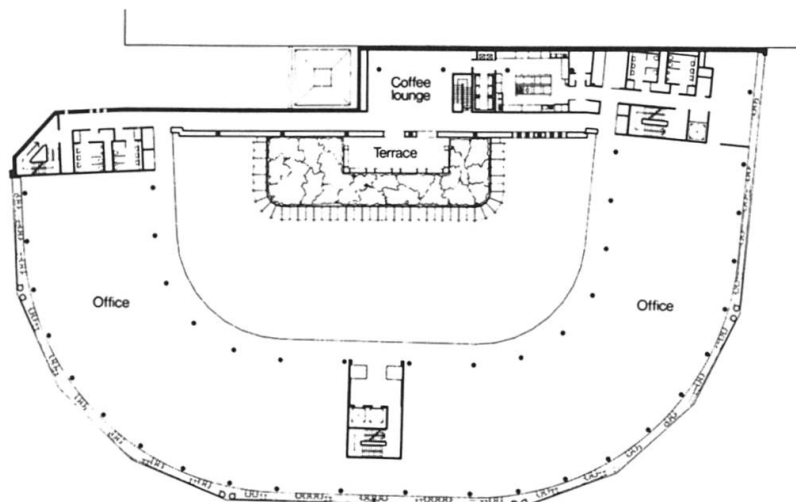
The office areas are designed for the introduction of advanced communications and computer equipment. Raised floors provide space for power, telephone and communications cabling and act as the supply plenum for conditioned air. This is supplied through floor diffusers which may be positioned to suit varying office layouts. Heat is extracted through the light fittings within the ribbed concrete structure producing an economical system without local supply ducts or controls.

The southern elevation, which is subject to solar gain and traffic noise, is designed as a double skin. The outer skin is totally glazed with bronze tinted glass and the inner skin consists of clear glass with retractable blinds and solid panels. Heat in the space between the skins is controlled so that it may be used in the winter and is prevented from entering the offices in the summer.

(J. Brandenburger)



Section



Second floor

