

Zeitschrift: IABSE structures = Constructions AIPC = IVBH Bauwerke
Band: 9 (1985)
Heft: C-33: Structures in Luxembourg

Werbung

Nutzungsbedingungen

Die ETH-Bibliothek ist die Anbieterin der digitalisierten Zeitschriften auf E-Periodica. Sie besitzt keine Urheberrechte an den Zeitschriften und ist nicht verantwortlich für deren Inhalte. Die Rechte liegen in der Regel bei den Herausgebern beziehungsweise den externen Rechteinhabern. Das Veröffentlichen von Bildern in Print- und Online-Publikationen sowie auf Social Media-Kanälen oder Webseiten ist nur mit vorheriger Genehmigung der Rechteinhaber erlaubt. [Mehr erfahren](#)

Conditions d'utilisation

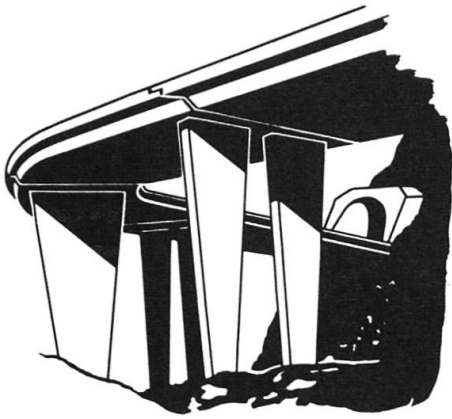
L'ETH Library est le fournisseur des revues numérisées. Elle ne détient aucun droit d'auteur sur les revues et n'est pas responsable de leur contenu. En règle générale, les droits sont détenus par les éditeurs ou les détenteurs de droits externes. La reproduction d'images dans des publications imprimées ou en ligne ainsi que sur des canaux de médias sociaux ou des sites web n'est autorisée qu'avec l'accord préalable des détenteurs des droits. [En savoir plus](#)

Terms of use

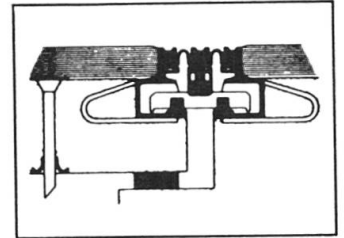
The ETH Library is the provider of the digitised journals. It does not own any copyrights to the journals and is not responsible for their content. The rights usually lie with the publishers or the external rights holders. Publishing images in print and online publications, as well as on social media channels or websites, is only permitted with the prior consent of the rights holders. [Find out more](#)

Download PDF: 02.04.2026

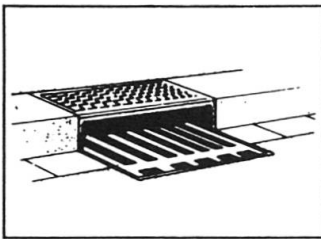
ETH-Bibliothek Zürich, E-Periodica, <https://www.e-periodica.ch>



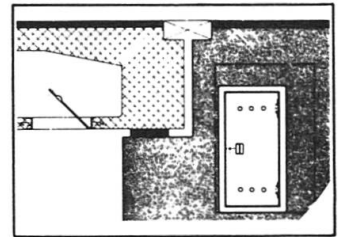
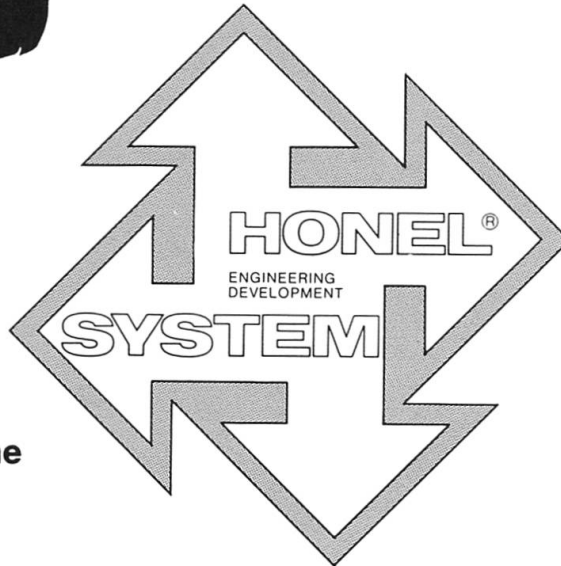
**Belags-Sickerwasser-
Ableiter**
Subsurface Seepage.
**Evacuacions des eaux
et aérations.**
*Ductos de agua de
filtración para calzadas.*



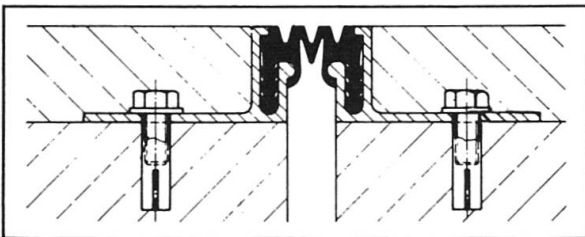
**Fahrbahn-Übergangs-
Konstruktionen.**
Expansion joints.
**Raccordements de
chausées**
*Sistemas de juntas
de dilatación.*



Entwässerungs-Systeme
Surface drainage
Evacuacions des eaux
Pozos de drenaje

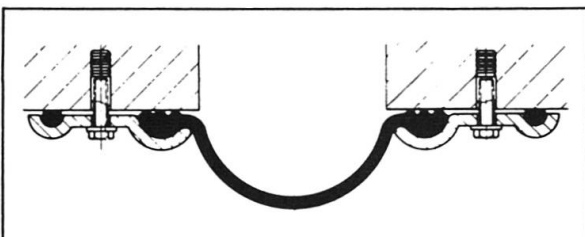
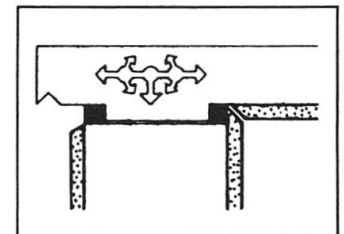


Hohlraumschalungen
Einstiegsluken + Türen
Formwork + Moulds
Access openings
Ouvertures d'entrée
Aberturas de entrada



Fugendichtungen im Hoch- + Tiefbau
Joint seals + Joint profilés
Sellos para juntas

Auflager
Structural
Bearings
Appuis
Apoyos



Pressen + Pumpen
Hydraulic jacks
Verins + Pompes
Prensas + bombas



heinz honegger ag

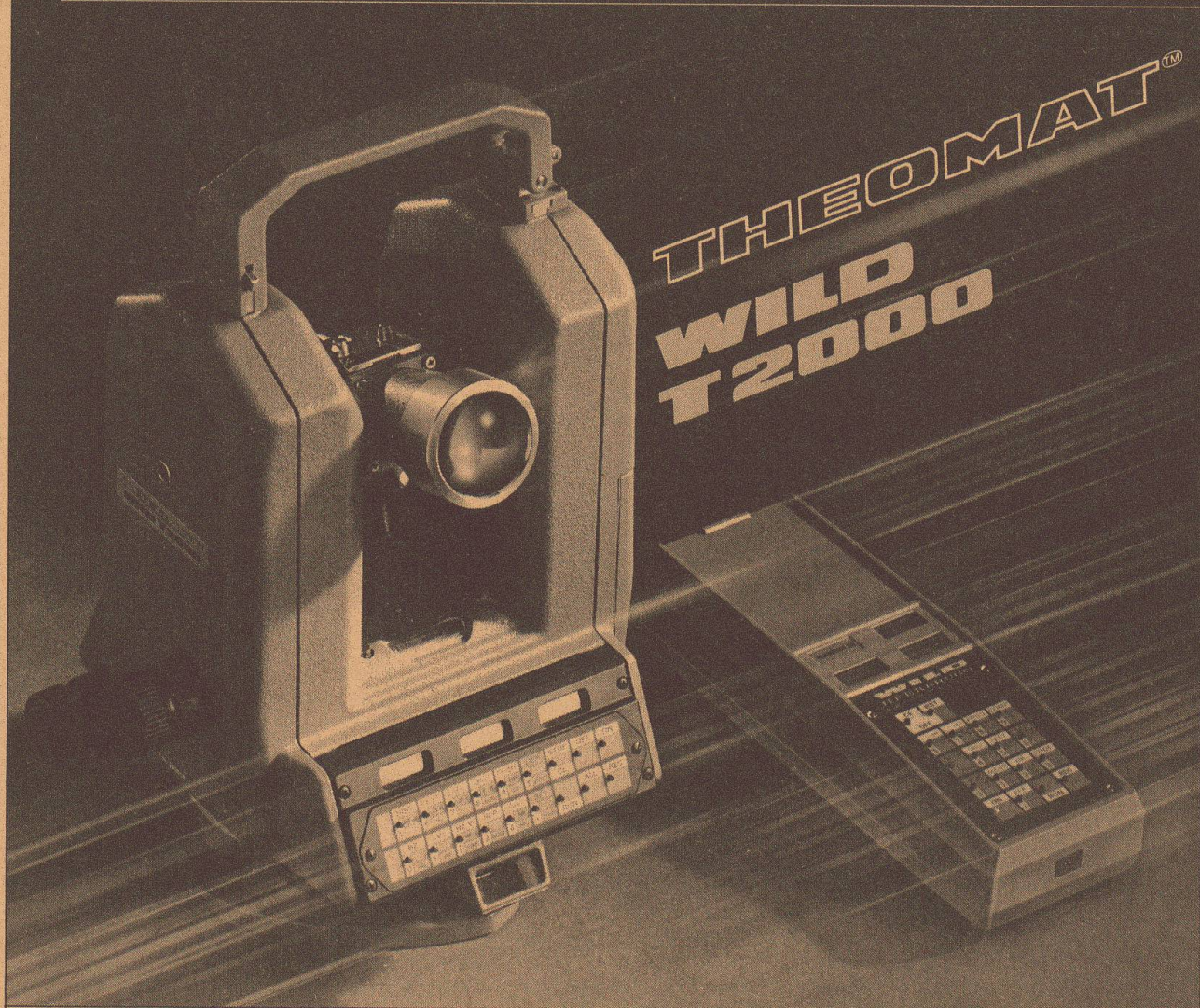
CH-8427 Rorbas ZH Switzerland
Tel. 01 - 865 11 77, Telex 52844

Vertretungs- und Lizenzvergabe:
Honel-Holding SA
Sonnmattdstrasse 6
CH-8180 Bülach, Switzerland
Phone 01/860 89 43



Programmed for highest economy:

the informatics theodolite for you.



Measure with highest precision

With a standard deviation of 0.5'' (0.15 mgon), the THEOMAT informatics theodolite has the most accurate angle-measuring system of all.

Flexible to cope with any task

The Wild T2000 offers limitless possibilities and its various measuring modes allow it to adapt easily to any task. With the DI4, DI4L and DI20 DISTOMATs, it forms an electronic tacheometer with high

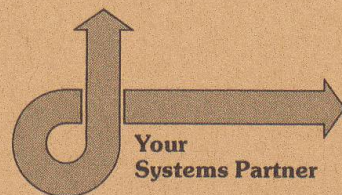
performance and measuring speed. With the Wild GRE3 Data Terminal connected, the Wild T2000 transforms into a data-acquisition, data recording and field processing system that meets all demands.

Maximum comfort for efficient, reliable working

You can absolutely depend on your Wild T2000 to work even under the toughest climatic conditions (-20°C to +50°C). It powers and controls the DISTOMAT and GRE3, monitors all functions, and its central

control panel displays operating instructions and results.

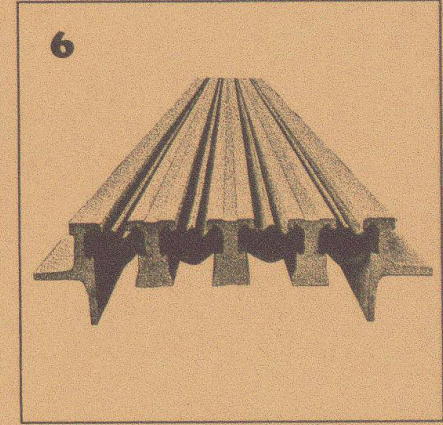
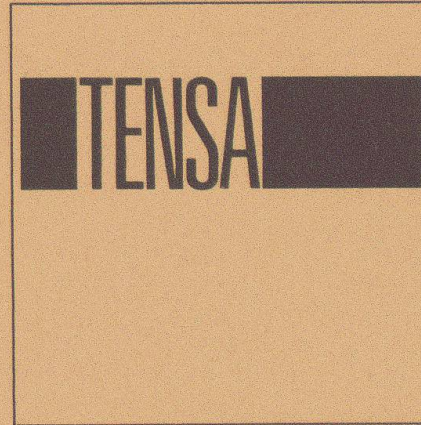
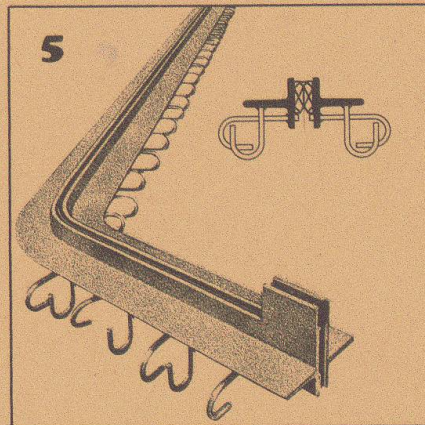
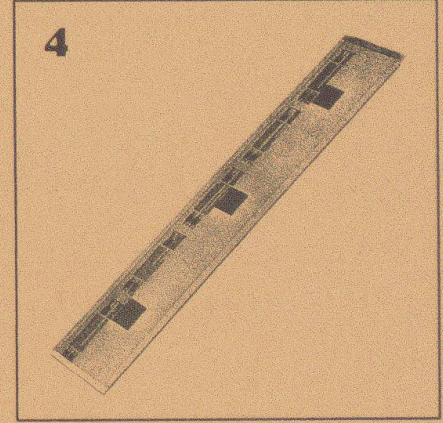
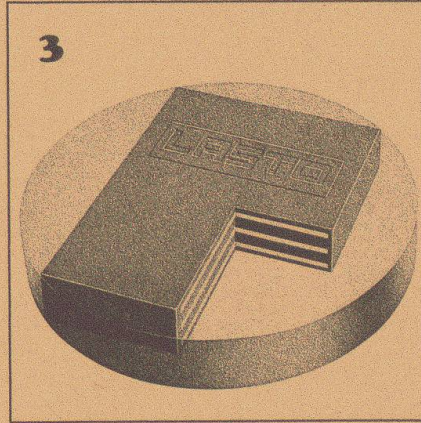
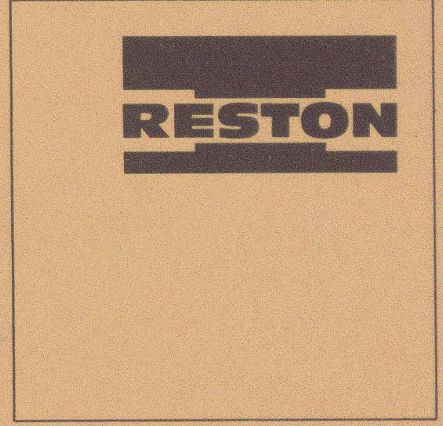
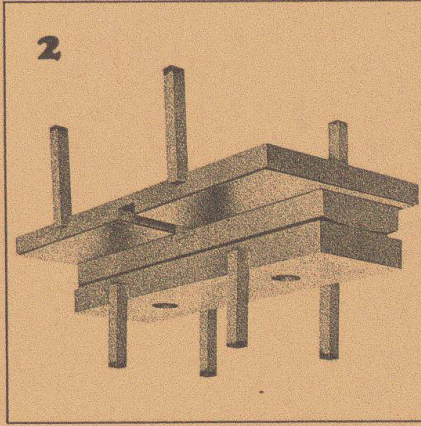
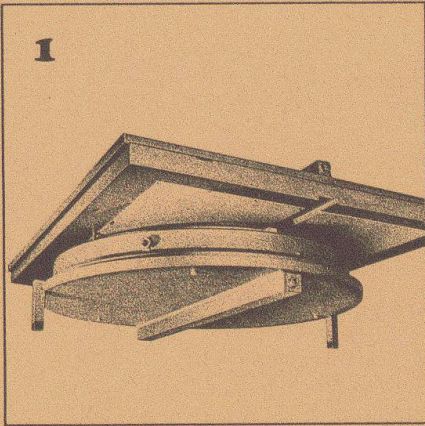
**THEOMAT Wild T2000:
the computer-age modular
survey system.**



G 60 83

Wild Heerbrugg Ltd · CH-9435 Heerbrugg · Switzerland · Tel. 071/70 31 31

**WILD
HEERBRUGG**



1
RESTON Pot Sliding Bearings are highly suitable for installation in bridge structures. They feature a low-profile design, low weight and high loading capacity.

2
RESTON Linear Tilting and Sliding Bearings are a combination of normal linear tilting bearings and PTFE sliding bearings and are suitable for installation in bridge structures.

3
LASTO-BLOCK Bearings are suitable for building, civil engineering and bridge construction applications. Their simple form allows easy installation.

4
LASTO-STRIP Bearings for Buildings were especially developed for building constructions. They are particularly suitable for movement compensation between concrete slabs and load-supporting walls and prevent structural cracking.

5
TENSA-ACME Roadway Construction Joints are highly suitable for installation in traffic levels (parking lots, bridges, airport areas etc.). Dilatation up to 60 mm.

6
TENSA-LASTIC Roadway Construction Joints meet all the requirements that can be made in bridge engineering of a modern joint design. They are rugged and watertight. Dilatation range 60 mm and bigger.

PROCEQ SA
 Riesbachstrasse 57
 CH-8034 Zurich

proceq

Phone: 01/47 7800
 Telex 53357 proce ch