

Zeitschrift: IABSE structures = Constructions AIPC = IVBH Bauwerke
Band: 7 (1983)
Heft: C-28: Recent structures: Part II

Werbung

Nutzungsbedingungen

Die ETH-Bibliothek ist die Anbieterin der digitalisierten Zeitschriften auf E-Periodica. Sie besitzt keine Urheberrechte an den Zeitschriften und ist nicht verantwortlich für deren Inhalte. Die Rechte liegen in der Regel bei den Herausgebern beziehungsweise den externen Rechteinhabern. Das Veröffentlichen von Bildern in Print- und Online-Publikationen sowie auf Social Media-Kanälen oder Webseiten ist nur mit vorheriger Genehmigung der Rechteinhaber erlaubt. [Mehr erfahren](#)

Conditions d'utilisation

L'ETH Library est le fournisseur des revues numérisées. Elle ne détient aucun droit d'auteur sur les revues et n'est pas responsable de leur contenu. En règle générale, les droits sont détenus par les éditeurs ou les détenteurs de droits externes. La reproduction d'images dans des publications imprimées ou en ligne ainsi que sur des canaux de médias sociaux ou des sites web n'est autorisée qu'avec l'accord préalable des détenteurs des droits. [En savoir plus](#)

Terms of use

The ETH Library is the provider of the digitised journals. It does not own any copyrights to the journals and is not responsible for their content. The rights usually lie with the publishers or the external rights holders. Publishing images in print and online publications, as well as on social media channels or websites, is only permitted with the prior consent of the rights holders. [Find out more](#)

Download PDF: 26.07.2025

ETH-Bibliothek Zürich, E-Periodica, <https://www.e-periodica.ch>



Since our Company won the international design competition for the East Coast Parkway Project in the Republic of Singapore, it took four years before the Benjamin Sheares Bridge that constitutes the major part of the Parkway was completed. To our great honour the most prestigious Tanaka Prize of the Society of Civil Engineers of Japan was awarded to this bridge in 1982. The Singapore Government named it Benjamin Sheares Bridge in memory of their late president Dr. Benjamin Sheares who passed away in harness just before the completion of the project.

The East Coast Parkway Project was let under package deal contract including investigation, design and construction. Its full length reaches as much as 12 kilometres. Bridge length spans 5 kilometres, and 1.8 kilometres of Benjamin Sheares Bridge with 4 ramps comprises the major part of the project. This bridge

consists of H-shaped piers called "trestle", trestle deck made of box girders and 47 metres length of beam that weighs 180 tons. Latest techniques are employed both for design and construction of the bridge. The ramps employ 9 span continuous prestressed box girder type and enjoys its functional beauty. Continuous and years of research and development of techniques about prestressed concrete structures like bridges, tanks etc. resulted in the successful completion of the Benjamin Sheares Bridge.

Our company will make best use of various experiences we gained through this project for our further progress and development in this field.

We are most appreciative of Chanceewah Maunsell & Partners and Toh Seng Sit Construction (PTE) Ltd associated with Sato Kogyo, helping us very much during the E.C.P. Project.

ベンジャミン・シアース・ブリッジをデザインした硬貨を発行



シンガポールを象徴する構造物として佐藤工業が設計施工したベンジャミン・シアース・ブリッジをデザインした新5ドル硬貨(約500円)が、このほどシンガポール政府より発行されました。

Issue of a coin with a design of Benjamin Sheares Bridge on it

The government of Singapore has issued new five dollar coins (about 500 yen) that have the image of Benjamin Sheares Bridge on it. Sato Kogyo Co Ltd has designed and constructed the above bridge as a symbolic structure in Singapore. Two kinds of 5 dollar coins are issued. One is a commemorative coin made of pure silver, and another is nickel.

Established in 1862 / General Contractor
SATO KOGYO CO., LTD.

PRESIDENT Kinji Sato

●HEAD OFFICE:

8, Honcho 4-chome, Nihonbashi, Chuo-ku, Tokyo 103
 Tel.: (03) 661-1231 Telex: SATOKO J 2522481

●BRANCHES:

Sapporo, Tohoku Kantu, Tokyo, Yokohama, Hokuriku, Nagoya, Osaka, Chugoku, Shikoku, Kyusyu and some 60 offices, plants and other facilities

●OFFICES ABROAD:

SINGAPORE

17-D, Balmoral Road, Singapore 1025
 Tel.: 2350011 Telex: SATOKO 8733108

MALAYSIA

11-D, Jalan Parry, Kuala Lumpur, West Malaysia
 Tel.: 422632 Telex: SATOKO 8431234

JEDDAH

No. 906, Kaki Center, Medina Road Jeddah Saudi Arabia P.O. Box 8865
 Tel.: 6602860, Telex: SATOKO SJ 495-403129

●AFFILIATED COMPANIES ABROAD:

SATO AMOY CONSTRUCTION (MALAYSIA) SDN. BHD.

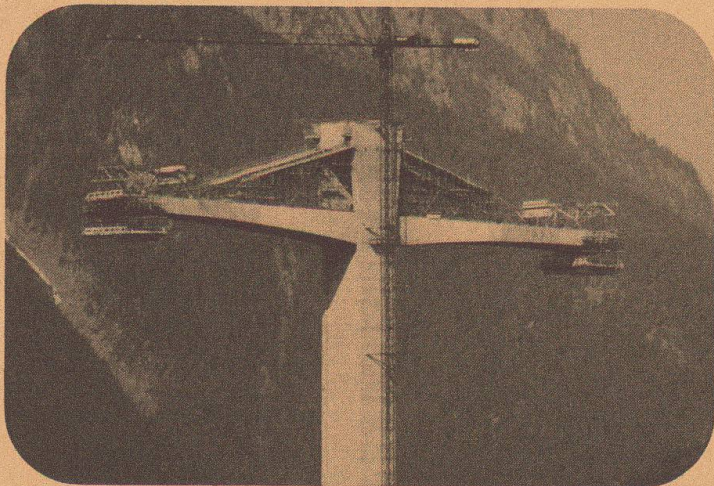
No. 15, Jalan SS 4D 2 (1st Floor) Peoples' Park, Petaling Jaya Selangor, Malaysia
KEDAH SATO SDN. BHD.
 No. 97 S and G Mergong Industrial Estate Seberang Jalan Putera Alor Star, Kedah Malaysia

SATO ARABIA CO., LTD.

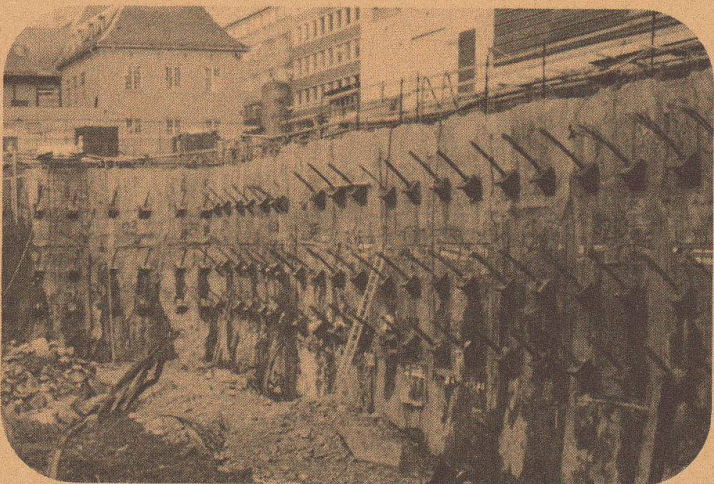
No. 906, Kaki Center, Medina Road Jeddah Saudi Arabia P.O. Box 8865.

SATO IRAN CO., LTD.

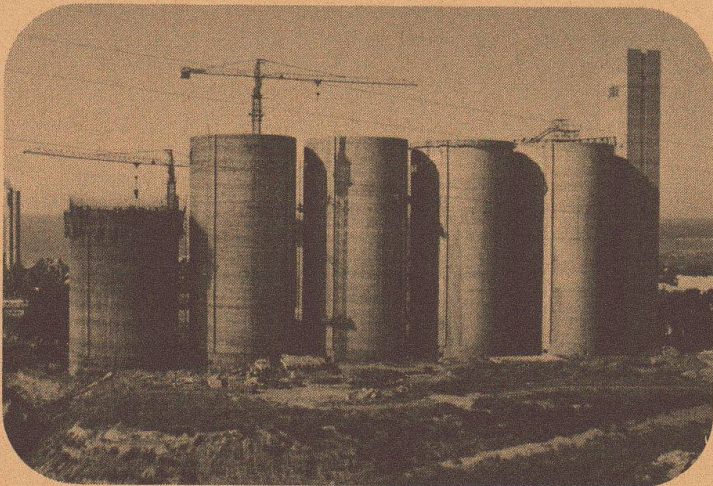
No. 3 Joveyn Street, Alvand Avenue Argentine Circle, Tehran, Iran



the symbol for:



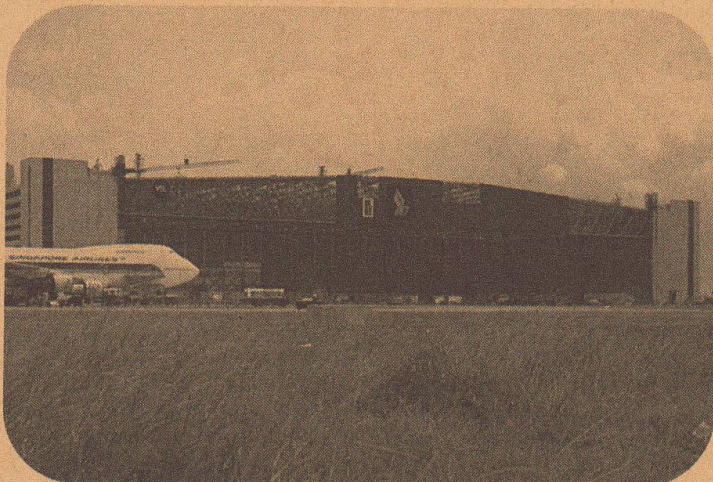
- **Post-tensioning**
- **Soil and Rock Anchors**
- **Slipforming**
- **Heavy Rigging**



Please send me detailed information on:

- ☐ Post-tensioning
- ☐ Soil and Rock Anchors
- ☐ Slipforming
- ☐ Heavy Rigging
- ☐ Other

send this coupon
to the address below or to the next
VSL Representative



Losinger Ltd.
VSL International
Könizstrasse 74
3001 Berne/Switzerland
Phone 031 45 22 11
Telex 33300/32667

Representatives in:
 Australia, Austria, Belgium, Brazil, Canada, Denmark,
 Finland, France, FR Germany, Greece, Honduras,
 Hong Kong, Indonesia, Iran, Ireland, Italy, Japan,
 Korea, Kuwait, Malaysia, Netherlands, Norway,
 Panama, Peru, Philippines, Portugal, Saudi Arabia,
 Singapore, South Africa, Sweden, Switzerland,
 Taiwan, Turkey, United Kingdom, USA, Venezuela.



Use the ORIGINAL

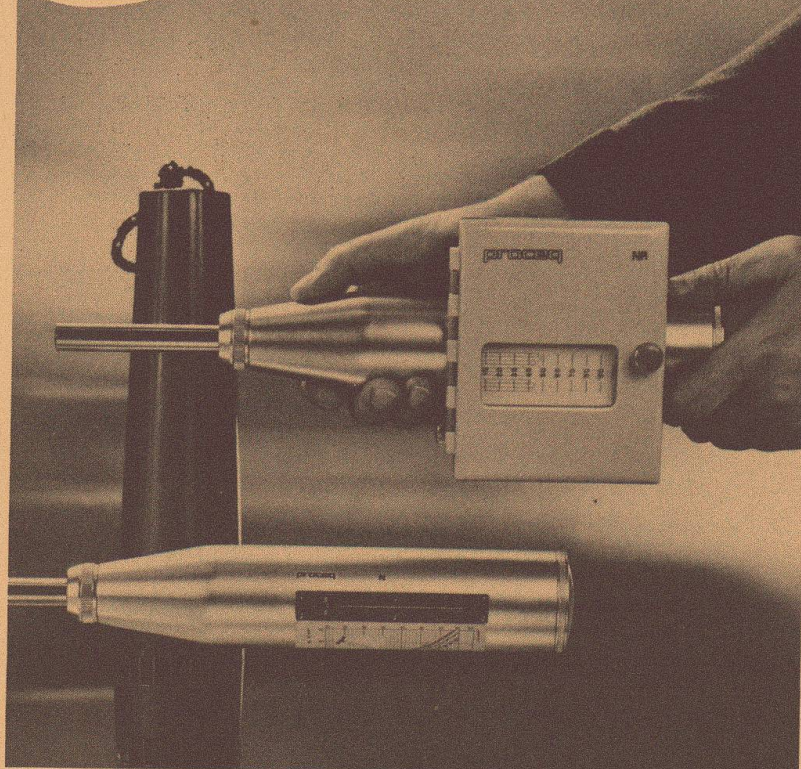
Concrete Test Hammer SCHMIDT

Models N and NR for non-destructive testing of the concrete quality in the finished structure



stands for:

- constant high product quality – Swiss Finish
- spare parts guarantee, even for older instruments
- possibility of accurate calibration
- calibration on assured and unchanged basis for 25 years



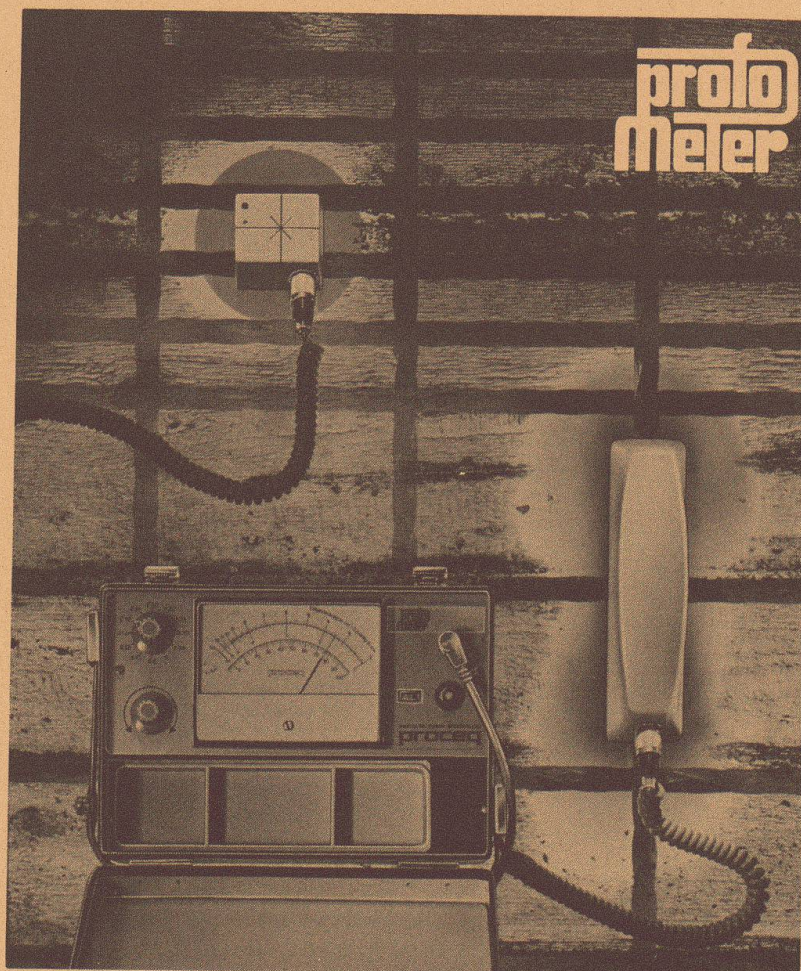
a PROCEQ product from Switzerland

proto
meter

Reinforcement Detector PROFOMETER

PROFOMETER for precise and non-destructive testing of reinforcement in completed concrete structures.

- Determination of position, direction and quantity of main and secondary reinforcement
- Exact measurement of concrete cover up to 120 mm, even with densely packed reinforcement
- Determining the locations suitable for drilling dowel holes
- Estimates of rod diameter



a PROCEQ product from Switzerland

PROCEQ SA
Riesbachstr. 57 Tel. 01/47 78 00
CH-8034 Zürich Telex 53357 proce ch

proceq