

Zeitschrift: IABSE structures = Constructions AIPC = IVBH Bauwerke
Band: 6 (1982)
Heft: C-21: Recent structures

Artikel: Alssund Bridge (Denmark)
Autor: Petersen, A.
DOI: <https://doi.org/10.5169/seals-17589>

Nutzungsbedingungen

Die ETH-Bibliothek ist die Anbieterin der digitalisierten Zeitschriften auf E-Periodica. Sie besitzt keine Urheberrechte an den Zeitschriften und ist nicht verantwortlich für deren Inhalte. Die Rechte liegen in der Regel bei den Herausgebern beziehungsweise den externen Rechteinhabern. Das Veröffentlichen von Bildern in Print- und Online-Publikationen sowie auf Social Media-Kanälen oder Webseiten ist nur mit vorheriger Genehmigung der Rechteinhaber erlaubt. [Mehr erfahren](#)

Conditions d'utilisation

L'ETH Library est le fournisseur des revues numérisées. Elle ne détient aucun droit d'auteur sur les revues et n'est pas responsable de leur contenu. En règle générale, les droits sont détenus par les éditeurs ou les détenteurs de droits externes. La reproduction d'images dans des publications imprimées ou en ligne ainsi que sur des canaux de médias sociaux ou des sites web n'est autorisée qu'avec l'accord préalable des détenteurs des droits. [En savoir plus](#)

Terms of use

The ETH Library is the provider of the digitised journals. It does not own any copyrights to the journals and is not responsible for their content. The rights usually lie with the publishers or the external rights holders. Publishing images in print and online publications, as well as on social media channels or websites, is only permitted with the prior consent of the rights holders. [Find out more](#)

Download PDF: 02.08.2025

ETH-Bibliothek Zürich, E-Periodica, <https://www.e-periodica.ch>



10. Alssund Bridge (Denmark)

Owner: The Danish Road Directorate

Design and supervision: Cowiconsult, Consulting Engineers and Planners AS, Copenhagen

Contractors: The Alssund Consortium:
– C.G., Jensen A/S, Copenhagen
– AB Skånska Cementgjuteriet, Göteborg

Aesthetical consultant: E. & O. Nørgaard, Architects, M.D.L., Copenhagen

Works duration: 42 months

Opened to traffic: 1981

Main quantities of material

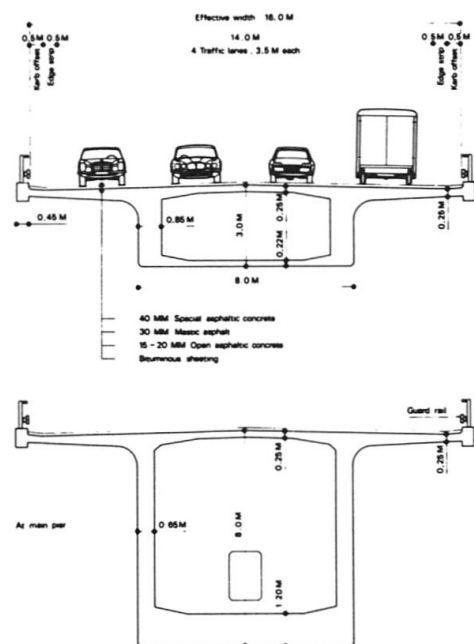
Reinforced concrete (excl. piles):	21,000 m ³
Mild steel reinforcement:	2,000 t
Prestressing:	500 t
Total length of driven RC piles:	9,000 m

Introduction

The Alssund Bridge constitutes a link in the 11.5 km long realignment of the A8 road, which will lead through-traffic round Sønderborg, and thus relieve the King Chr. X's Bridge, a bascule-bridge opened to traffic in 1930.

The bridge is 660 m long and has an effective width of 16 m. It is designed as a box girder bridge with 9 spans, 50 + 2 x 60 + 85 + 150 + 85 + 2 x 60 + 50 m, continuous over all spans with expansion joints at both abutments.

For economic reasons, relatively short approach spans have been chosen. The embankments, however, have not been extended more than is aesthetically justifiable towards the sound.



Cross section at mid span and over pier

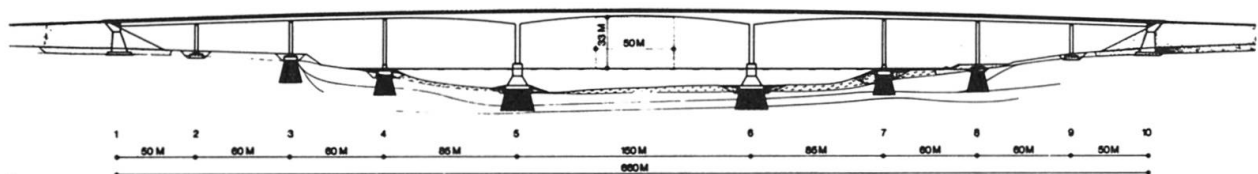
Substructure

The main piers are founded on 140 Nos., approx. 15 m long R.C. piles with a cross section of 0.4 x 0.5 m. The piles are driven through the upper layers of mud and sand into the moraine below. The pier bases are cast in the dry, inside a cofferdam of steel sheet piles, sealed with a bottom plug, cast under water. Heat, evolved during hardening of the concrete in the pier base, is lead away using cooling water circulated in pipes.

The 28 m high pier shafts have hollow sections with external dimensions of 2.8 x 8 m.

The piers on shallow water are founded on 48 Nos., approx. 10-15 m long R.C. piles (0.4 x 0.5 m). The piers and abutments on land are partly founded on 0.3 x 0.3 m R.C. piles and partly directly founded.

The pier shafts for the approach spans have hollow sections with external dimensions of 2.0 x 8.0 m.



Elevation

Superstructure

The superstructure of the main bridge is constructed in post-tensioned concrete using the balanced free cantilever method. The cross section is designed as a central box-type girder having an overlying bridge deck of concrete cantilevered over both sides of the central box.

The box girder is 8.0 m wide. The height varies from 8.0 m over the main piers to 2.9 m at the midpoint of the main span, and 3.0 m at the transitions to the approach span. The thickness of the bottom slab varies correspondingly from 1.2 m over the piers to 0.22 m at the midpoint of the main span and 0.45 m at the approach spans. The wall is 0.65 m thick.

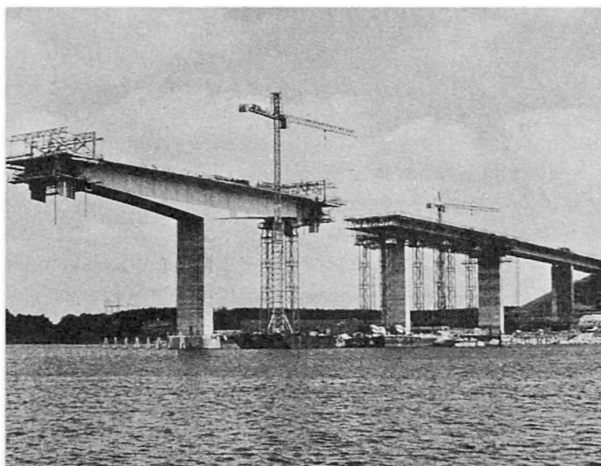
The length of each casting section varied from 3.5 m at the supports to 5.0 m at mid-span. A total of 16 sections were cast for each cantilever.

The prestressing used is the Freyssinet system 12L15, low relaxation steel, grade 1680/1865 MPa. The prestressing in the main bridge consists of 116 cantilever cables, 38 continuous cables for the bottom slab at mid-span and 12 continuous cables at bottom slab in the side spans.

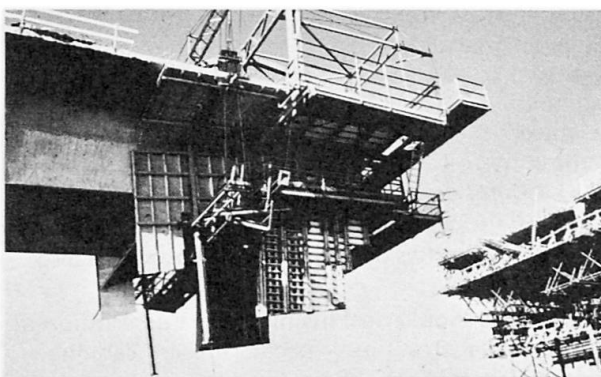
The superstructure of the approach spans is constructed in post-tensioned concrete cast in place, using the span by span method starting from the abutment on either side of the sound.

The superstructure in the approach spans is supported on 16 MN sliding point rocker bearings on each pier.

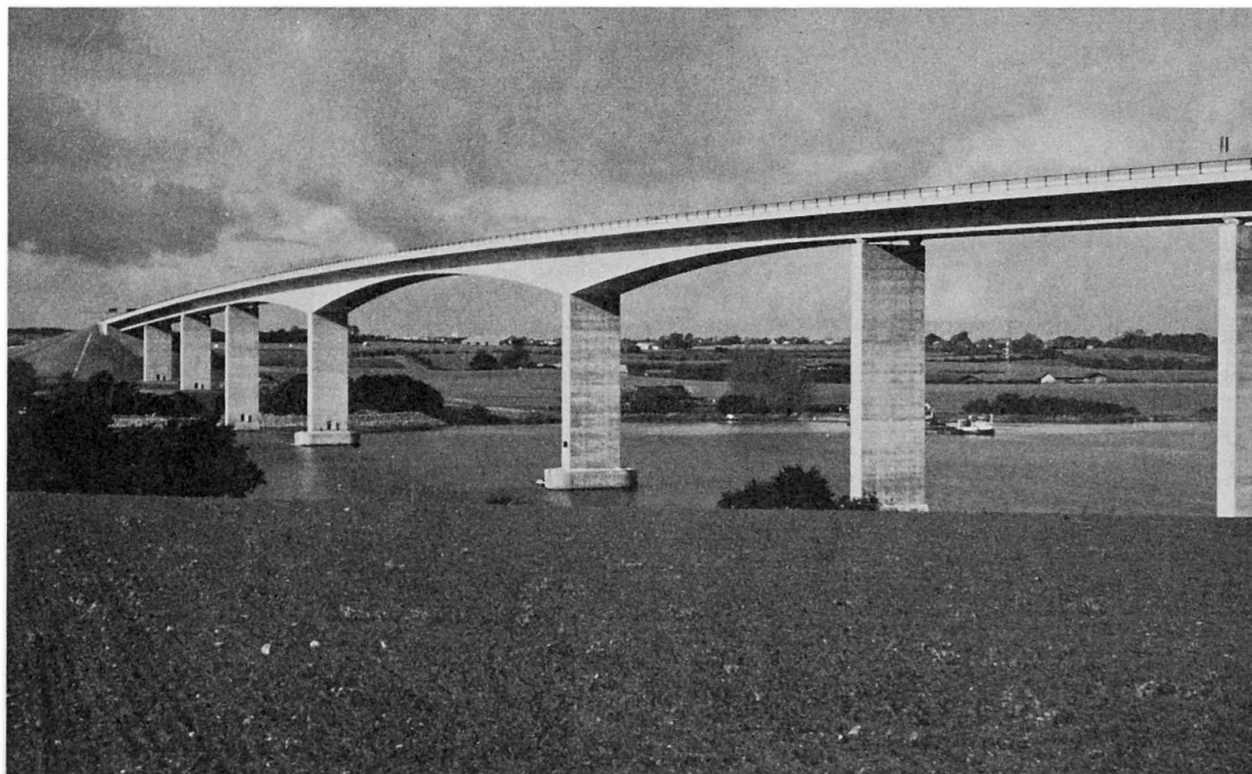
The concrete used in the superstructure has a cylinder strength of 35 MPa.



Casting of approach span and cantilever construction symmetrically from main pier



(A. Petersen) Joining of cantilever and approach span



Alssund Bridge