

Zeitschrift: IABSE structures = Constructions AIPC = IVBH Bauwerke
Band: 2 (1978)
Heft: C-5: Structures

Werbung

Nutzungsbedingungen

Die ETH-Bibliothek ist die Anbieterin der digitalisierten Zeitschriften auf E-Periodica. Sie besitzt keine Urheberrechte an den Zeitschriften und ist nicht verantwortlich für deren Inhalte. Die Rechte liegen in der Regel bei den Herausgebern beziehungsweise den externen Rechteinhabern. Das Veröffentlichen von Bildern in Print- und Online-Publikationen sowie auf Social Media-Kanälen oder Webseiten ist nur mit vorheriger Genehmigung der Rechteinhaber erlaubt. [Mehr erfahren](#)

Conditions d'utilisation

L'ETH Library est le fournisseur des revues numérisées. Elle ne détient aucun droit d'auteur sur les revues et n'est pas responsable de leur contenu. En règle générale, les droits sont détenus par les éditeurs ou les détenteurs de droits externes. La reproduction d'images dans des publications imprimées ou en ligne ainsi que sur des canaux de médias sociaux ou des sites web n'est autorisée qu'avec l'accord préalable des détenteurs des droits. [En savoir plus](#)

Terms of use

The ETH Library is the provider of the digitised journals. It does not own any copyrights to the journals and is not responsible for their content. The rights usually lie with the publishers or the external rights holders. Publishing images in print and online publications, as well as on social media channels or websites, is only permitted with the prior consent of the rights holders. [Find out more](#)

Download PDF: 07.08.2025

ETH-Bibliothek Zürich, E-Periodica, <https://www.e-periodica.ch>

TECHINT

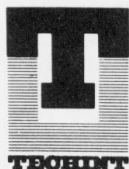
Engineers & Contractors

The following is an outline of primary fields of past and present activities:

- Design, supply and construction of Public Utilities:
Bridges, Highways and Roads
Tunnels, Airports, Ports
Hydroelectric and Thermoelectric Power Plants
High Voltage Transmission Lines and Substations
Water and Waste Treatment Plants;
Hospitals, Education Centres and Welfare Institutions
- Systems Engineering and Computer Services.
- Planning, design, procurement, construction, start-up and management of:
Iron and Steel Plants, Pipe Mills, Foundries and Direct Reduction Plants;
Refineries, Petrochemical and Chemical Plants
Oil and Gas Lines, Pumping Stations, Tank Farms
Marine Installations.



Zárate-Brazo Largo (Argentina) Cable-stayed highway-railway Bridge over Parana River (Techint-Albano)



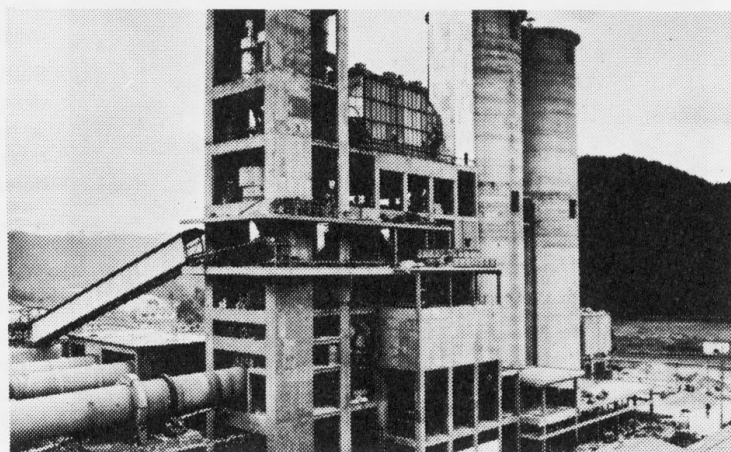
Headquarters

Via Cino del Duca 12
20122 Milano - Italy
Phone 7756 1
Telex 31241

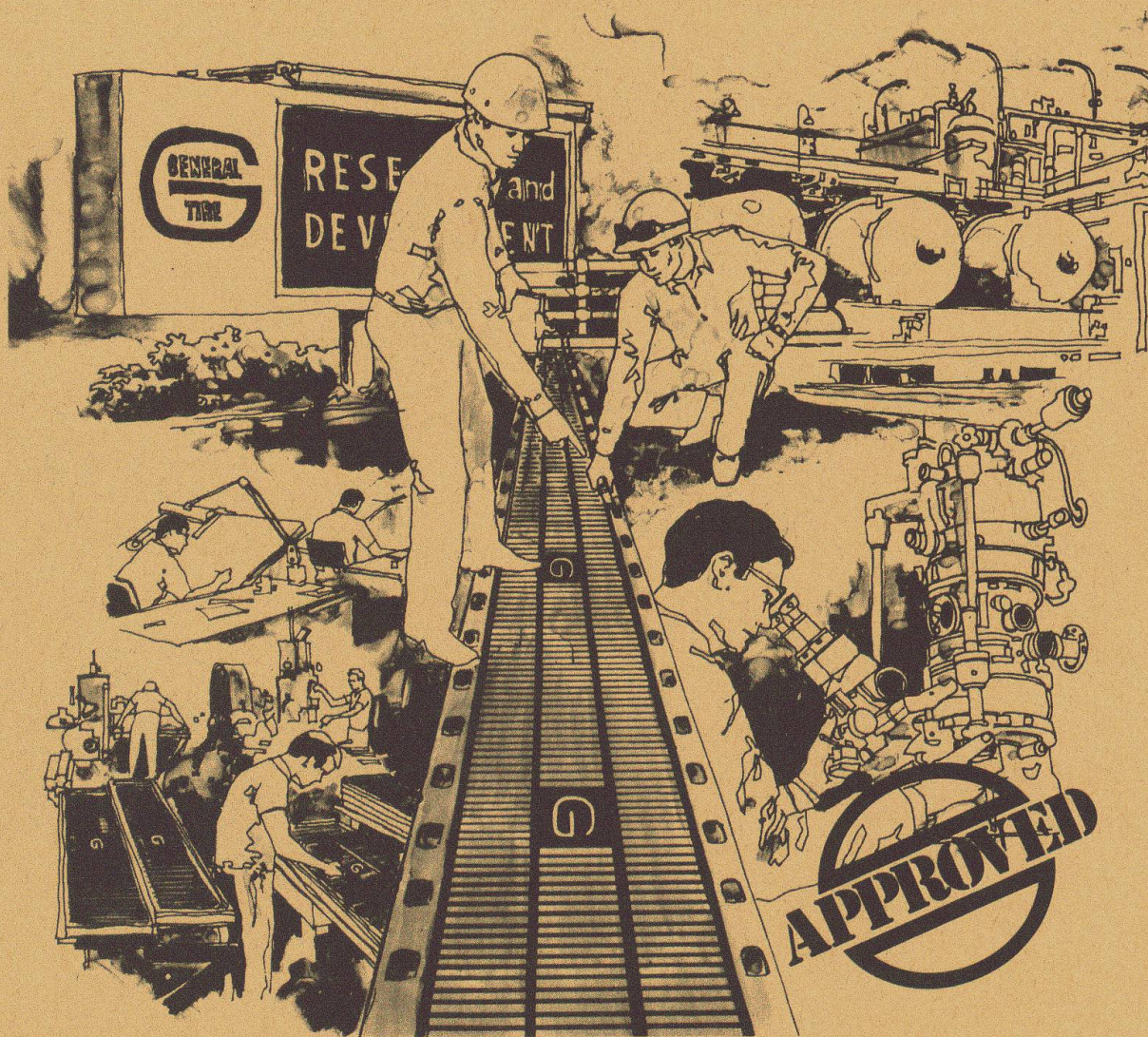
Carlos M. Della Paolera 297/9
1104 Buenos Aires - Argentina
Phone 221-0200/0500/0800
Telex 0121099

Affiliated companies

- | | |
|-------------|---------------|
| • Brazil | • Italy |
| • Venezuela | • England |
| • Ecuador | • Germany |
| • Peru | • Portugal |
| • Chile | • Switzerland |
| • USA | • Iran |
| • Mexico | • Australia |



Santa Rita (Brazil) Cement Plant



Transflex®... better than the best expansion joint seal

You'll do better when you specify TRANSFLEX, the original elastomeric expansion joint seal. With engineer-approved TRANSFLEX you get all of the technology, experience, facilities, and complete back-up of the people with know-how — the world's most knowledgeable group of structural rubber products distributors and The General Tire & Rubber Company — the very same people who created and installed America's first effective, steel-reinforced elastomeric expansion joint seal.

TRANSFLEX distributor services can be invaluable, and will produce

better expansion joint installations for you. They provide complete planning information: assistance in specifications, shop drawings, and on-the-job installation recommendations . . . all as part of the product!

And from General Tire's laboratories, engineering facilities, and extensive field testing, you receive a better product, the *right* engineer-approved TRANSFLEX expansion joint seal for each of your projects: bridges and parking decks; ramps and approaches; elevated roadways, dams, airports, and stadiums.

From start to finish, General Tire and its professional distributor organ-

ization stand behind each TRANSFLEX installation — your assurance that your job will meet *your* approval.

Write today for additional information to Mr. Earl Walker, General Tire International Company, Dept. DH, One General Street, Akron, Ohio 44329.

**GENERAL
TIRE**
INTERNATIONAL
**ENGINEERED
CONSTRUCTION
PRODUCTS**
Bridge and Highway Expansion
Joint Seals/Bridge Bearings/
Marine Fendering

The Wild NA2 handles everything.



It's the Universal Automatic Level.

A single instrument for a wide variety of tasks: the Wild NA2 Universal Automatic Level gives the right solution in every case.

It's precise – the compensator sets the line of sight to $\pm 0.3''$. It's sure – the push button provides an instant check on the functioning of the compensator. And it's powerful – the erect-image telescope with large objective and high magnification gives accurate readings.

There is also the model NAK2. This has a glass circle which is read to $0.1'$ for measuring angles, setting out, and tacheometric levelling.

The accessories are outstanding. With the GPM3 Parallel Plate Micrometer, readings are taken digitally to 0.1 mm, and by estimation to 0.01 mm. Foot and inch versions are available. The NA2 with micrometer is perfect for precise levelling, deformation measurements and optical tooling. For plumbing or defining vertical planes, just slip on the objective pentaprism. And for laser levelling and alignment tasks, connect up the GLO Laser Eyepiece. Of course there are other accessories such as the short focussing lens and autocollimation eyepiece.

Why not write for brochure G1 180e? Find out how the NA2 handles all levelling work, quickly, reliably and precisely.

Free colour brochure D 13 S

Write or send this coupon to
Wild Heerbrugg Ltd.,
CH-9435 Heerbrugg / Switzerland

Name

Address

Wild Heerbrugg Ltd.
CH-9435 Heerbrugg, Switzerland

WILD
HEERBRUGG