

Zeitschrift: IABSE structures = Constructions AIPC = IVBH Bauwerke
Band: 1 (1977)
Heft: C-1: Standard bridges as highway overcrossings

Artikel: Standard overbridges on expressways in Japan
Autor: Kodan, Nihon Doro
DOI: <https://doi.org/10.5169/seals-14510>

Nutzungsbedingungen

Die ETH-Bibliothek ist die Anbieterin der digitalisierten Zeitschriften auf E-Periodica. Sie besitzt keine Urheberrechte an den Zeitschriften und ist nicht verantwortlich für deren Inhalte. Die Rechte liegen in der Regel bei den Herausgebern beziehungsweise den externen Rechteinhabern. Das Veröffentlichen von Bildern in Print- und Online-Publikationen sowie auf Social Media-Kanälen oder Webseiten ist nur mit vorheriger Genehmigung der Rechteinhaber erlaubt. [Mehr erfahren](#)

Conditions d'utilisation

L'ETH Library est le fournisseur des revues numérisées. Elle ne détient aucun droit d'auteur sur les revues et n'est pas responsable de leur contenu. En règle générale, les droits sont détenus par les éditeurs ou les détenteurs de droits externes. La reproduction d'images dans des publications imprimées ou en ligne ainsi que sur des canaux de médias sociaux ou des sites web n'est autorisée qu'avec l'accord préalable des détenteurs des droits. [En savoir plus](#)

Terms of use

The ETH Library is the provider of the digitised journals. It does not own any copyrights to the journals and is not responsible for their content. The rights usually lie with the publishers or the external rights holders. Publishing images in print and online publications, as well as on social media channels or websites, is only permitted with the prior consent of the rights holders. [Find out more](#)

Download PDF: 07.08.2025

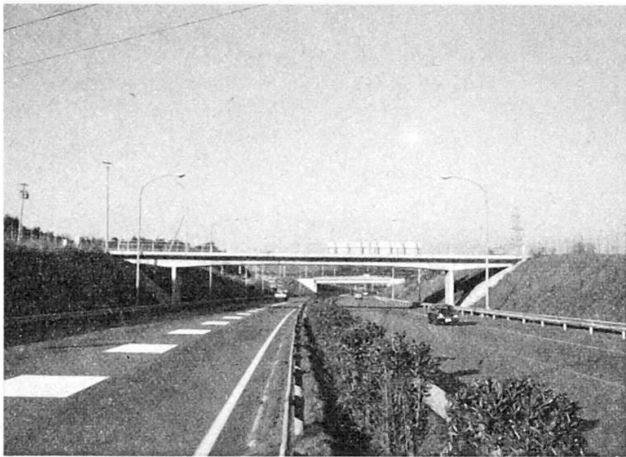
ETH-Bibliothek Zürich, E-Periodica, <https://www.e-periodica.ch>

9. Standard Overbridges on Expressways in Japan

Owner and Designer: Japan Highway Public Corporation

The construction of National Expressways in Japan was started some 20 years ago. Since then, the Japan Highway Public Corporation (Nihon Doro Kodan) has been in charge of the construction. Now, 1,900 km of expressways are completed and more than 3,000 km are under construction. As for bridges crossing over expressways, there are a great number of bridges, that is, one per kilometer of expressway on the average.

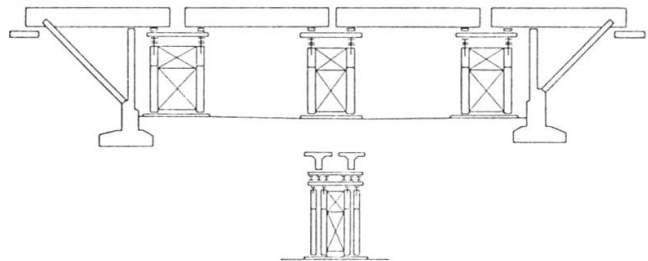
For reasons of economy, aesthetics and maintenance, prestressed concrete structures are usually chosen for these bridges. π -shaped rigid frame bridges with diagonal members are mostly adopted as standard type.



π -shaped rigid frame bridge with diagonal members
(constructed by Cast in place method)

These overbridges, however, are generally small and scattered on many spots along the expressway as mentioned above; furthermore, the cast in place concrete method is used for construction. Therefore work and quality control, as well as adjusting time schedule with earthwork has always been a problem. The precast block method is now being used for the construction, in order to solve these difficulties.

Whereas the superstructure is of a hollow slab type with variable depth in case of cast in place concrete method, T-shaped beam with constant depth has been adopted in case of precast block method. The beams are divided into several blocks longitudinally or transversely. Each block has the weight of 20 to 25 tons and is 10 to 12 meters long. The space for joint between each block is fully provided (more than 350 cm). After arranging the total length, it is cast with concrete to make the blocks in a monolith.



Precast block method

Even though the aesthetical aspect might slightly be harmed, this type of precast block method has outstanding advantages:

- Improvement of quality
- Shortening of work period
- Rationalization of labor
- Providing clearance during construction

But this method involves other problems, such as costs, carriage road and aesthetics. Nevertheless, the tendency toward precast method will be accentuated in the future.

(Nihon Doro Kodan)