

New members of the executive and technical committee of IABSE

Objekttyp: **AssociationNews**

Zeitschrift: **IABSE bulletin = Bulletin AIPC = IVBH Bulletin**

Band (Jahr): **13 (1989)**

Heft B-51: **IABSE bulletin**

PDF erstellt am: **30.04.2024**

Nutzungsbedingungen

Die ETH-Bibliothek ist Anbieterin der digitalisierten Zeitschriften. Sie besitzt keine Urheberrechte an den Inhalten der Zeitschriften. Die Rechte liegen in der Regel bei den Herausgebern.

Die auf der Plattform e-periodica veröffentlichten Dokumente stehen für nicht-kommerzielle Zwecke in Lehre und Forschung sowie für die private Nutzung frei zur Verfügung. Einzelne Dateien oder Ausdrucke aus diesem Angebot können zusammen mit diesen Nutzungsbedingungen und den korrekten Herkunftsbezeichnungen weitergegeben werden.

Das Veröffentlichen von Bildern in Print- und Online-Publikationen ist nur mit vorheriger Genehmigung der Rechteinhaber erlaubt. Die systematische Speicherung von Teilen des elektronischen Angebots auf anderen Servern bedarf ebenfalls des schriftlichen Einverständnisses der Rechteinhaber.

Haftungsausschluss

Alle Angaben erfolgen ohne Gewähr für Vollständigkeit oder Richtigkeit. Es wird keine Haftung übernommen für Schäden durch die Verwendung von Informationen aus diesem Online-Angebot oder durch das Fehlen von Informationen. Dies gilt auch für Inhalte Dritter, die über dieses Angebot zugänglich sind.

New Members of the Executive and Technical Committee of IABSE

Manabu Ito, New Member of the Executive Committee

Professor Manabu Ito, was born in 1930 in Japan. In 1953 he graduated and received his Dr. Eng. degree in 1959 from the University of Tokyo. He has been engaged in teaching and in research on bridge engineering and structural dynamics at the same university. Now he is Professor of Civil Engineering.

He has been involved in many big bridge projects in Japan, either as chairman or a member of advisory committees. Currently he is a member of the Senate of the University of Tokyo, a member of the Science Council of Japan and the President of the Japan Association for Wind Engineering. 1960 he joined IABSE as an individual member and has been the Secretary of the Japanese Group for many years. From 1987 to 1989 he was elected as Chairman of the Working Commission I 'Structural Performance, Safety and Analysis'.



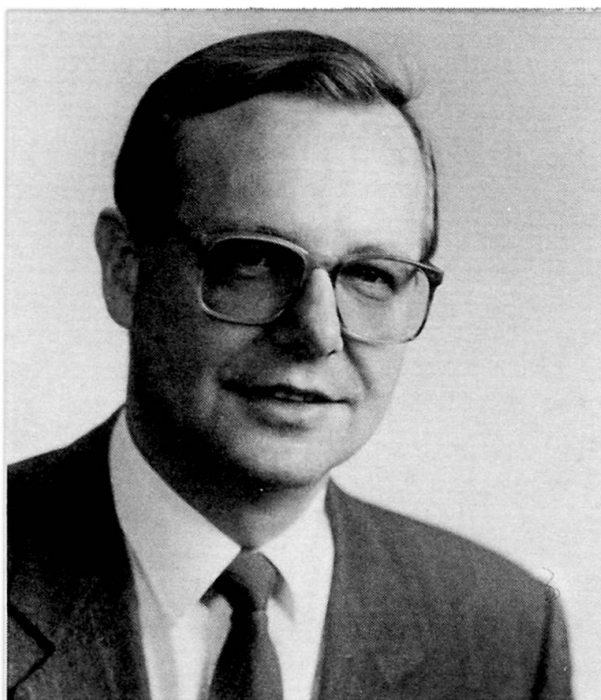
Manabu Ito

David Quinion, New Member of the Executive Committee

David W. Quinion was elected member of the Executive Committee of IABSE. A short biographical description of David Quinion was already published in the IABSE BULLETIN B-50/89, page 22.

Ernst Roubin, New Member of the Executive Committee

Dr. Ernst Roubin was born in 1940 in Vienna, Austria. He studied at the Technical University of Vienna and received his civil engineering degree in 1964. In 1988 he obtained the doctorate of technical science. From 1965 to 1987 he worked as a civil engineer with the Construction Company PORR. He was responsible for prestressed bridge construction and prefabricated structures. In this duty he was also responsible for the first Austrian bridge built with prefabricated segments with about 30 000 m² bridge surface. From 1984 to 1989 he was President of the Austrian Concrete Association. At the beginning of this year Ernst Roubin became the Director of the Union of Austrian Cement Industry.



Ernst Roubin

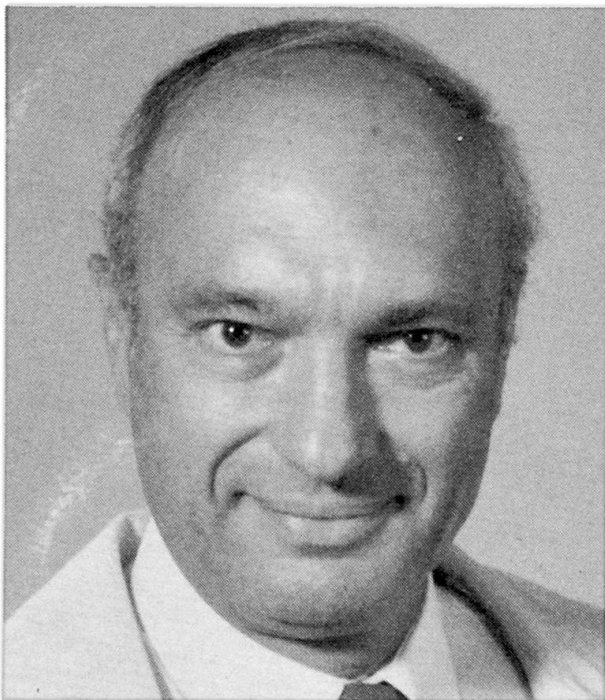


Johan Blaauwendraad

Johan Blaauwendraad, New Chairman of Working Commission I

Professor Johan Blaauwendraad was born in 1940 and received his civil engineering degree in 1962 at Delft University of Technology. He worked at the research institute IBBC-TNO until 1970 and was with Rijkswaterstaat (State Public Works) until 1986. Having obtained his doctorate at Delft in 1975, he became a part-time professor of structural mechanics in 1979. Since 1981 he is full professor in Delft, now as head of the structural engineering group.

His main interest lies in the area of numerical methods in structural engineering, with special focus on concrete mechanics; another strong interest is computer aided design (CAD) and computer integrated construction (CIC). He was three times a member of the organizing committee for IABSE colloquia, twice in the organizing committee of the IABSE world congress and has been a member of WC VI. At present he is chairman of the Dutch Group of IABSE and chairman of WC I. In the Netherlands Johan Blaauwendraad is engaged in research management as a board member of institutes and national research organizations.



Adolf Schub

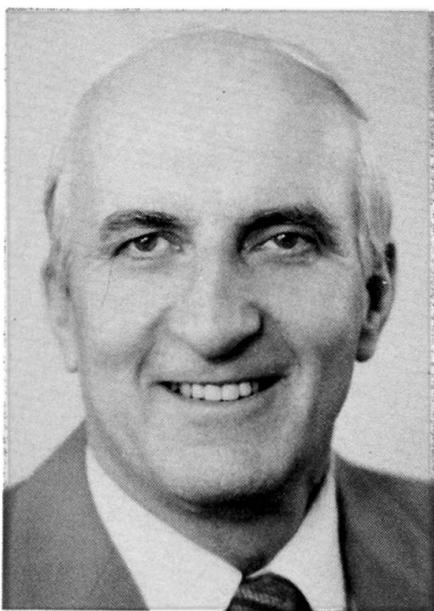
Adolf Schub, New Chairman of Working Commission IV

Adolf Schub was born in 1931 in Berlin-West. He studied Civil Engineering at the Technical University of Munich and graduated as Dipl.-Ing. (registered Engineer) in 1956. Following his studies, he joined a major German construction firm as structural engineer for public works design and subsequently for on-site management of construction projects. In 1961 he became a full-time research assistant at the TU Munich for the construction management programme. In parallel he prepared his Ph.D. in civil engineering, and graduated as Dr.-Ing. (with honours) in 1965. Three years later he gained the Dr.-Ing. habil formally entitling him to give an academic lecture course. Since 1974, he has been Associate Professor for construction management at the same university. He had a sabbatical leave as a Visiting Professor at Stanford University (USA) in 1978/79 and at the Swiss Federal Institute of Technology (Zurich) in 1983/84.

Adolf Schub's special research interests are: project scheduling and monitoring, cost control and forecasting, applied production theory, decision models, expert systems and project management. He is the author of numerous papers in professional journals, has co-authored three books on construction management, and co-edited a standard handbook of project management.

John Breen, New Chairman of Working Commission III

John E. Breen holds the Nasser I. Al-Rashid Chair in Civil Engineering at The University of Texas at Austin, where he was Director of the Phil M. Ferguson Structural Engineering Laboratory from 1967 to 1985. A graduate of Marquette University, the University of Missouri, and the University of Texas, Dr. Breen recently completed a six-year term as Chairman of the American Concrete Institute Committee 318 which is responsible for the ACI Building Code. He is co-author of the textbook 'Reinforced Concrete Fundamentals'. John Breen is active in reinforced and prestressed concrete research and development. His contributions have had major impacts on American Codes and have been recognized by more than ten major research awards. He was elected a member of the USA National Academy of Engineering in 1976. He frequently serves as a consultant on major bridge and building projects. He has been active in IABSE as a member and Vice-Chairman of Working Commission III, as a member of the Scientific Committee for the Paris Symposium and as a member of the Scientific Committee for the Congress in 1992 in New Delhi.



John E. Breen

Rudolf Dieterle, Technical Adviser of Working Commission IV

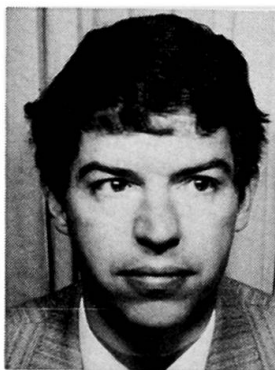
Dr. Rudolf B. Dieterle was born in 1950 in Switzerland. He received his MSc. in Civil Engineering in 1973 from the Swiss Federal Institute of Technology in Zurich followed in 1981 by his Ph.D. in Civil Engineering. From 1976 to 1979 he studied Economics at the University of Zurich. Since 1981 he has been with the Universal Engineering Corporation in Basle as General Manager of Techdata AG. He is experienced in construction and project management of complex civil engineering projects, in wide application of structural dynamics and in computer-aided structural calculations for reinforced concrete structures.

Asko Sarja, New Chairman of Working Commission VI

Asko Sarja

Asko Sarja, born in 1941, received his MScTech degree at Oulu University in 1967 and Dr. Tech. degree at Helsinki University of Technology in 1979. In his first three years in practice he worked at the Bridge Design Office and at the Water Resources and Waterways Administration. Since 1970 he has been involved in research at the Technical Research Centre of Finland. Since 1978 he has been Director of the Concrete and Silicate Laboratory. Professor Sarja has also lectured and acted as a special teacher at the Helsinki University of Technology, giving courses on reliability theory of structures and in advanced concrete technology.

Asko Sarja's research work has been directed towards the mechanics of structures, concrete technology and computer integrated industrialized construction. The number of publications and articles written by Asko Sarja is about 150. He also has several patented inventions. At present he is active in several international working groups in IABSE and some other international organisations.



Rudolf Dieterle