

Zeitschrift: IABSE congress report = Rapport du congrès AIPC = IVBH
Kongressbericht

Band: 14 (1992)

Artikel: Polish bridge management system: marking, planning, budgeting

Autor: Rewinski, Stefan / Bien, Jan

DOI: <https://doi.org/10.5169/seals-13892>

Nutzungsbedingungen

Die ETH-Bibliothek ist die Anbieterin der digitalisierten Zeitschriften auf E-Periodica. Sie besitzt keine Urheberrechte an den Zeitschriften und ist nicht verantwortlich für deren Inhalte. Die Rechte liegen in der Regel bei den Herausgebern beziehungsweise den externen Rechteinhabern. Das Veröffentlichen von Bildern in Print- und Online-Publikationen sowie auf Social Media-Kanälen oder Webseiten ist nur mit vorheriger Genehmigung der Rechteinhaber erlaubt. [Mehr erfahren](#)

Conditions d'utilisation

L'ETH Library est le fournisseur des revues numérisées. Elle ne détient aucun droit d'auteur sur les revues et n'est pas responsable de leur contenu. En règle générale, les droits sont détenus par les éditeurs ou les détenteurs de droits externes. La reproduction d'images dans des publications imprimées ou en ligne ainsi que sur des canaux de médias sociaux ou des sites web n'est autorisée qu'avec l'accord préalable des détenteurs des droits. [En savoir plus](#)

Terms of use

The ETH Library is the provider of the digitised journals. It does not own any copyrights to the journals and is not responsible for their content. The rights usually lie with the publishers or the external rights holders. Publishing images in print and online publications, as well as on social media channels or websites, is only permitted with the prior consent of the rights holders. [Find out more](#)

Download PDF: 04.04.2026

ETH-Bibliothek Zürich, E-Periodica, <https://www.e-periodica.ch>



Polish Bridge Management System: Marking, Planning, Budgeting

Système polonais de gestion de ponts: évaluation, planification, budget

Das Polnische Brückenverwaltungssystem: Bezeichnung, Planung, Budget

Stefan REWINSKI
Highway Data Processing Centre
Warsaw, Poland

Jan BIEN
Wroclaw Technical University
Wroclaw, Poland

Polish Bridge Management System /BMS/ has been designed as a set of autonomous modules. In Fig.1. are presented modules and main functions of BMS.

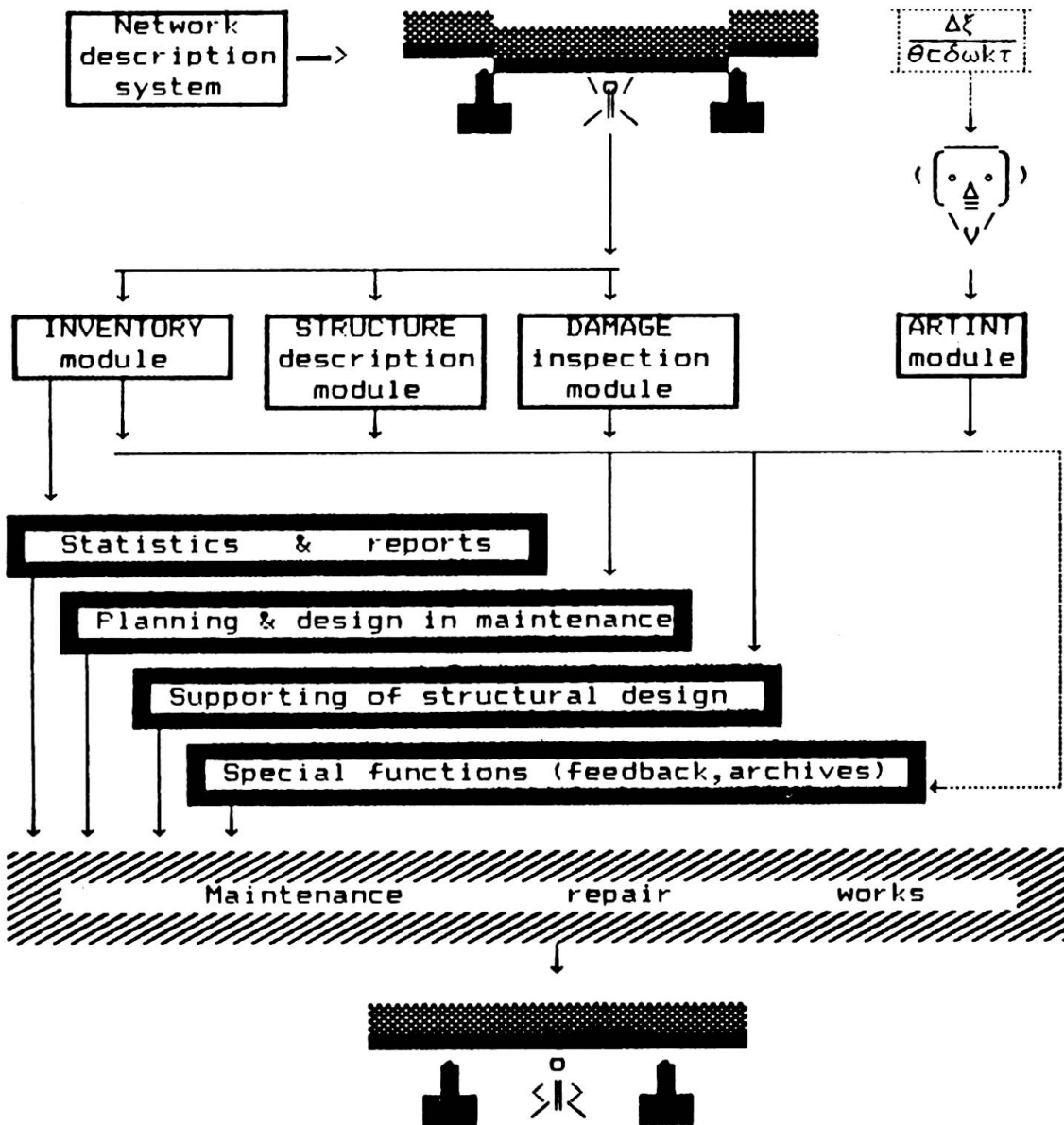


Fig.1 General diagram of Polish B M S



MARKING. Technical state of bridge structure is described by Bridge Serviceability Index /BSI/. BSI is calculated as a fuzzy value of the impairment level of structure. Logical operation of BSI calculation takes into account type of bridge structure, types of damaged elements, sorts of damages, location and intensity of damages. In target of bridge position on repair list settlement Total Bridge Serviceability Index /TBSI/ is calculated. Besides the value contained in BSI, bridge life service, traffic, accidents and important nontechnical data are included in TBSI calculation formula. Fig. 2. presents idea of fuzzy treatment of the BSI and TBSI.

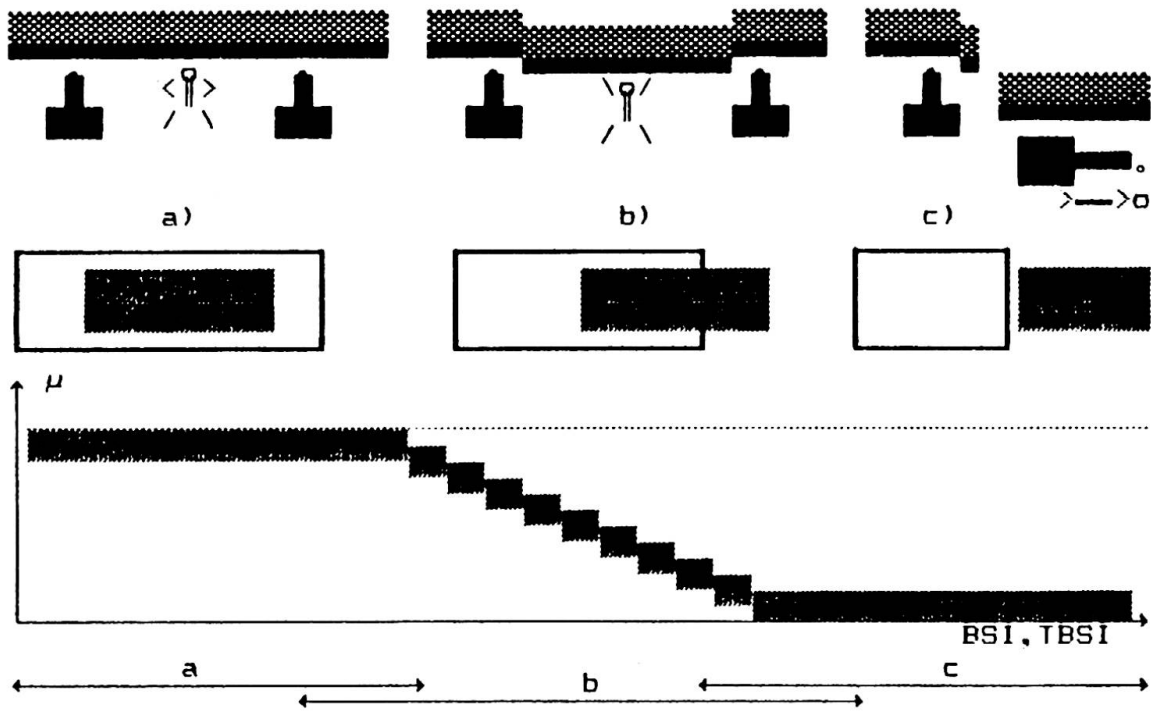


Fig.2 Idea of fuzzy treatment of the B S I & T B S I

PLANNING and BUDGETING. Position on repair list given by TBSI and various strategies of maintenance in fuzzy expression are main logical conditions of planning and budgeting process. Idea is contained in Fig.3.

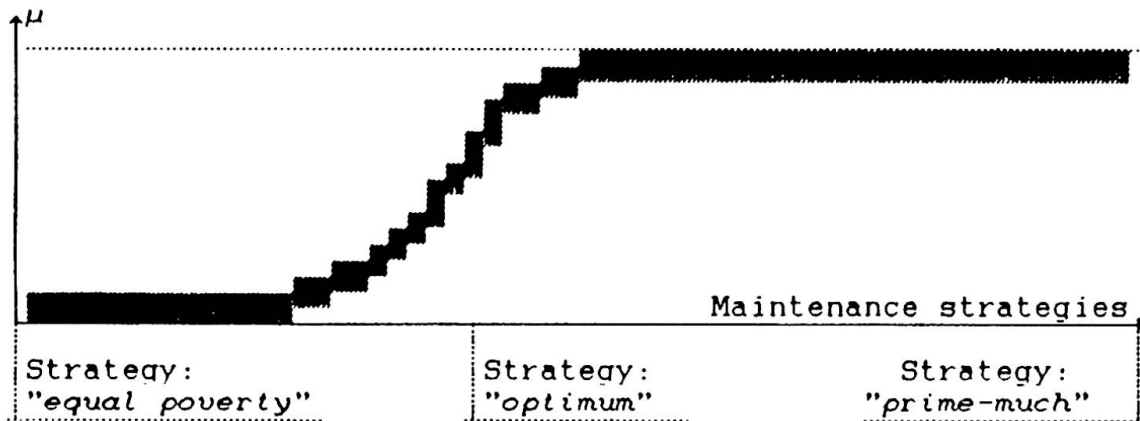


Fig.3 Fuzzy expression of maintenance strategies