

Zeitschrift: IABSE congress report = Rapport du congrès AIPC = IVBH
Kongressbericht

Band: 12 (1984)

Artikel: Retrofit system to enhance earthquake resistance

Autor: Stiemer, Siegfried F.

DOI: <https://doi.org/10.5169/seals-12298>

Nutzungsbedingungen

Die ETH-Bibliothek ist die Anbieterin der digitalisierten Zeitschriften auf E-Periodica. Sie besitzt keine Urheberrechte an den Zeitschriften und ist nicht verantwortlich für deren Inhalte. Die Rechte liegen in der Regel bei den Herausgebern beziehungsweise den externen Rechteinhabern. Das Veröffentlichen von Bildern in Print- und Online-Publikationen sowie auf Social Media-Kanälen oder Webseiten ist nur mit vorheriger Genehmigung der Rechteinhaber erlaubt. [Mehr erfahren](#)

Conditions d'utilisation

L'ETH Library est le fournisseur des revues numérisées. Elle ne détient aucun droit d'auteur sur les revues et n'est pas responsable de leur contenu. En règle générale, les droits sont détenus par les éditeurs ou les détenteurs de droits externes. La reproduction d'images dans des publications imprimées ou en ligne ainsi que sur des canaux de médias sociaux ou des sites web n'est autorisée qu'avec l'accord préalable des détenteurs des droits. [En savoir plus](#)

Terms of use

The ETH Library is the provider of the digitised journals. It does not own any copyrights to the journals and is not responsible for their content. The rights usually lie with the publishers or the external rights holders. Publishing images in print and online publications, as well as on social media channels or websites, is only permitted with the prior consent of the rights holders. [Find out more](#)

Download PDF: 21.01.2026

ETH-Bibliothek Zürich, E-Periodica, <https://www.e-periodica.ch>



Retrofit System to Enhance Earthquake Resistance

Siegfried F. STIEMER

Assoc. Prof. Univ.
of British Columbia
Vancouver, BC, Canada

Experimental and analytical investigations of a retrofit-system to enhance the earthquake resistance in existing buildings and structures have been conducted in the University of British Columbia, Department of Civil Engineering, Earthquake Simulator Laboratory. The system consists of a combination of well known base-isolation techniques, a new base storey design, and newly developed multidirectional energy absorber made of mild steel. The research results indicated the usefulness of this system and proved, that it can be implemented in existing buildings without reduction of the structural integrity of the building and without major modifications of the original design.

The key idea of the system is to separate the building from the existing ground motion by roller bearings or sliding pads and restricting it from excessive displacements by solid state steel energy absorbers. Extensive experimental tests have been conducted to prove the principles, to correlate analytical programmes, and to devise an engineering approach to the design of the system as a whole and the energy absorbers in particular. A transparent design procedure is now available, which enables the engineer to design this retrofit-system for different earthquake regions and for different structures.

One of the focal points of the research project was to show, how a retrofit base-isolation system could be implemented in steel buildings without additional blind-storeys or double foundations as used in recent proposals by others. This results in considerable cost savings, which make the new approach very attractive for a broad spectrum of buildings for which until now an update in respect to earthquake resistance was believed to be too expensive.

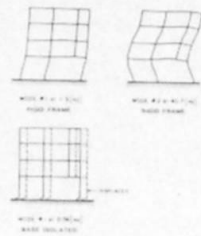
High importance was placed on the investigations and development of reliable, inexpensive, and replaceable energy absorbers. They have to restrain the building against wind loads and, in case being subjected to major earthquake loadings, have to prevent the building from excessive displacements. These devices are designed to deform elastically under minor loads (such as wind) or displacements (such as thermal expansion) and to deform plastically when severe loads (such as earthquakes) are imposed on the building or bridge. The energy absorbers allow displacements in all directions, however work most efficiently for displacements in the horizontal plane. They consist of curved plates of hot-rolled mild steel plates. An engineering method was introduced by the author for the practical design of the steel energy absorbers and for predetermining the number of cycles to failure.

In the experimental studies steel roller bearings were used because they had a very low friction coefficient without becoming unstable for large displacements. However, the design approach is valid for other low friction sliding devices, too, e.g. for neoprene bearings often used in bridge applications.

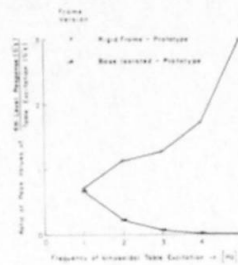
A wide range of applications can be foreseen for the solid state steel energy absorbers, particularly in the area where currently viscous or friction dampers are used (bridges, nuclear power plants), which can add considerable costs, constant maintenance, and can cause problems of implementation because of bulkiness.

RETROFIT-SYSTEM TO ENHANCE EARTHQUAKE RESISTANCE

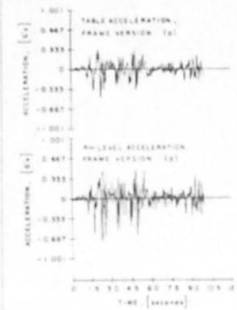
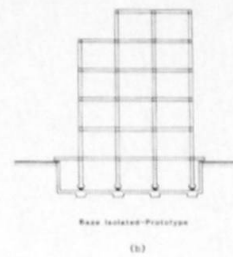
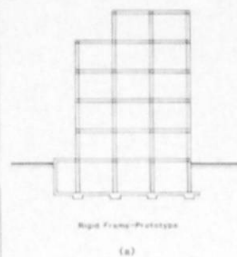
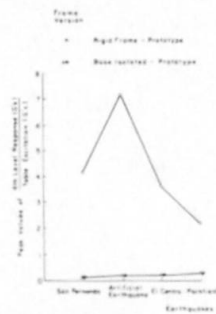
ANALYTICAL RESULTS
OF TESTED MODEL



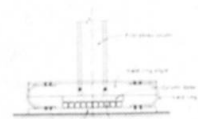
REDUCTION
OF SINUSOIDAL EXCITATION



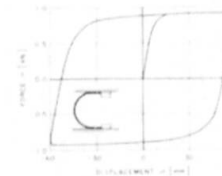
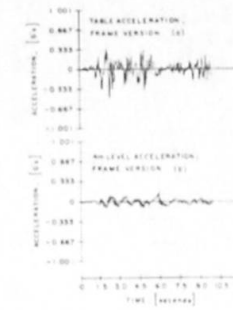
REDUCTION
OF EARTHQUAKE EXCITATION



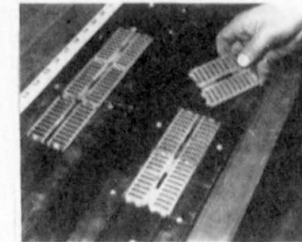
TIME HISTORY OF EXCITATION AND RESPONSE TO EL CENTRO EARTHQUAKE
FOR RIGID AND BASE-ISOLATED FRAME



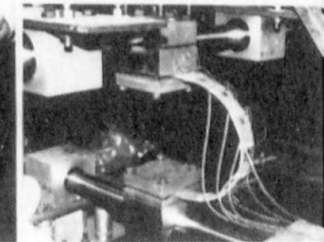
SCHEMATIC VIEW OF PROPOSED
ISOLATION PAD WITH STEEL ROLLER
BEARING AND STEEL YIELD RINGS



HYSTERESIS OF THE YIELD RINGS
USED IN MODEL TESTS



ROLLER BEARING PADS
FOR BASE ISOLATION RETROFIT



YIELD RING
IN DYNAMIC TESTING



EXPERIMENTAL INVESTIGATION
OF MODEL BUILDING ON EARTHQUAKE SIMULATOR



MULTIDIRECTIONAL YIELD RINGS
IN LOW CYCLE FATIGUE TESTING