

**Zeitschrift:** IABSE congress report = Rapport du congrès AIPC = IVBH  
Kongressbericht

**Band:** 12 (1984)

**Artikel:** Annacis Island Bridge

**Autor:** Taylor, P.R. / Simonsen, O.F.

**DOI:** <https://doi.org/10.5169/seals-12240>

### **Nutzungsbedingungen**

Die ETH-Bibliothek ist die Anbieterin der digitalisierten Zeitschriften auf E-Periodica. Sie besitzt keine Urheberrechte an den Zeitschriften und ist nicht verantwortlich für deren Inhalte. Die Rechte liegen in der Regel bei den Herausgebern beziehungsweise den externen Rechteinhabern. Das Veröffentlichen von Bildern in Print- und Online-Publikationen sowie auf Social Media-Kanälen oder Webseiten ist nur mit vorheriger Genehmigung der Rechteinhaber erlaubt. [Mehr erfahren](#)

### **Conditions d'utilisation**

L'ETH Library est le fournisseur des revues numérisées. Elle ne détient aucun droit d'auteur sur les revues et n'est pas responsable de leur contenu. En règle générale, les droits sont détenus par les éditeurs ou les détenteurs de droits externes. La reproduction d'images dans des publications imprimées ou en ligne ainsi que sur des canaux de médias sociaux ou des sites web n'est autorisée qu'avec l'accord préalable des détenteurs des droits. [En savoir plus](#)

### **Terms of use**

The ETH Library is the provider of the digitised journals. It does not own any copyrights to the journals and is not responsible for their content. The rights usually lie with the publishers or the external rights holders. Publishing images in print and online publications, as well as on social media channels or websites, is only permitted with the prior consent of the rights holders. [Find out more](#)

**Download PDF:** 03.04.2026

**ETH-Bibliothek Zürich, E-Periodica, <https://www.e-periodica.ch>**



## Annacis Island Bridge

**P.R. TAYLOR** and **O.F. SIMONSEN**

CBA-Buckland and Taylor  
Vancouver, BC, Canada

### BRIDGE DESCRIPTION

Type of Bridge:	Modified Fan Cable Stayed Bridge.
Spans:	50m, 182.75m, 465m, 182.75m, 50m.
Tower Height:	154.3m above top of pilecap.
Midspan Shipping Clearance:	58.4m above High Water.
Traffic Capacity:	Initially 4 lanes of highway traffic.
Design Capacity:	6 lanes of highway traffic or 4 lanes plus 2 tracks for ALRT.

### SUPERSTRUCTURE

The superstructure comprises a structural steel skeleton consisting of constant depth twin I beams and transverse floorbeams, which supports a composite precast concrete deck with a cast in place concrete overlay.

I beams:	2.1m deep by 18m long typically. Splices are bolted.
Floorbeams:	Tapered 1.6m to 1.8m deep by 27.2m long typical.
Floorbeam spacing:	4.5m typical.
Quantity of Structural Steel:	5,600 tonnes.
Grade of Structural Steel:	350 AT Category 2. 350MPa Yield Stress Atmospheric Corrosion Resistant Steel having a guaranteed Charpy Impact Strength of 27 Joules at -20°C.
Precast Deck Panels:	13.5m x 4.0m x 215mm typical - weight 35 tonnes approx.
Precast Concrete Strength:	55 MPa @ 56 days.
Overlay Concrete Strength:	55 MPa @ 56 days.

### CABLES

Cables are Long Lay Galvanized Bridge Strand sheathed with black polyethylene. Every cable has a zinc filled cast steel socket at both ends. Cables terminate at tie beams in the towers where provision is made for jacking and adjustment.

Number of Cables:	192 main cables, 8 tie down cables.
Cable lengths:	49.5m to 237.5m.
Cable diameters:	80mm to 130mm.
Wire:	7mm diameter galvanized, U.T.S. 1520 MPa.
Cable Assembly Weights:	2 tonnes to 24 tonnes.
Total Cable Weight:	1505 tonnes (excluding sockets).
Total Socket Weight:	193 tonnes.

### TOWERS AND BENTS (including Pilecaps)

The towers and bents are reinforced concrete structures with provision for ductile behaviour in earthquake.

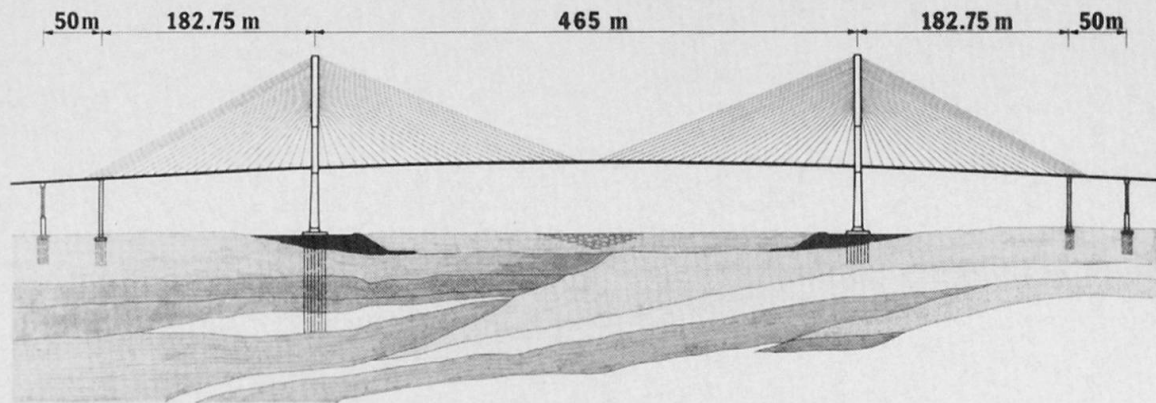
### FOUNDATIONS

All of the foundations rest on steel piles. In addition, densification piles were used in the upper sands around piers N1, N2 and N3 to eliminate the possibility of liquefaction during earthquake.

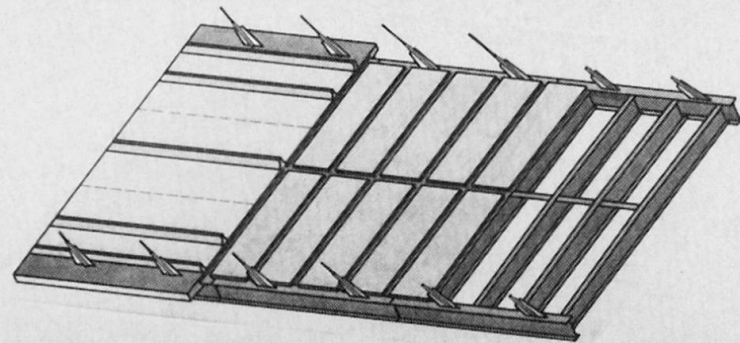
### SHIP IMPACT

Piers S1 and N1 have protective surrounds, designed to withstand the impact of a 60,000 DWT vessel travelling at 12 knots.

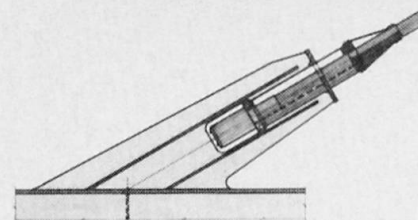
# ANNACIS ISLAND BRIDGE



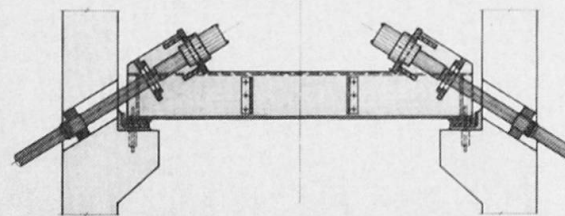
**BRIDGE ELEVATION**



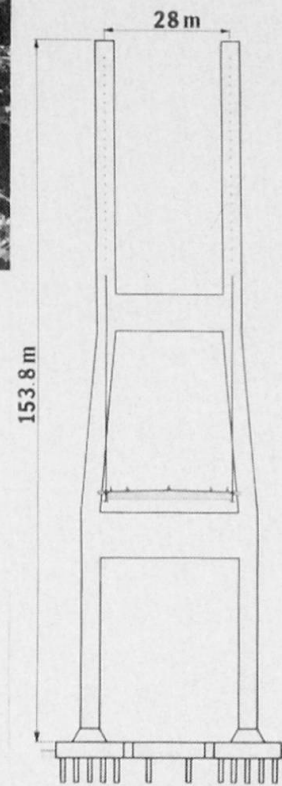
**ISOMETRIC VIEW OF DECK**



**LOWER CABLE ANCHOR**



**UPPER CABLE ANCHOR**



**TOWER**