

Zeitschrift: IABSE congress report = Rapport du congrès AIPC = IVBH
Kongressbericht

Band: 2 (1936)

Artikel: Bridges in the new maritime station at Naples

Autor: Krall, G.

DOI: <https://doi.org/10.5169/seals-3304>

Nutzungsbedingungen

Die ETH-Bibliothek ist die Anbieterin der digitalisierten Zeitschriften auf E-Periodica. Sie besitzt keine Urheberrechte an den Zeitschriften und ist nicht verantwortlich für deren Inhalte. Die Rechte liegen in der Regel bei den Herausgebern beziehungsweise den externen Rechteinhabern. Das Veröffentlichen von Bildern in Print- und Online-Publikationen sowie auf Social Media-Kanälen oder Webseiten ist nur mit vorheriger Genehmigung der Rechteinhaber erlaubt. [Mehr erfahren](#)

Conditions d'utilisation

L'ETH Library est le fournisseur des revues numérisées. Elle ne détient aucun droit d'auteur sur les revues et n'est pas responsable de leur contenu. En règle générale, les droits sont détenus par les éditeurs ou les détenteurs de droits externes. La reproduction d'images dans des publications imprimées ou en ligne ainsi que sur des canaux de médias sociaux ou des sites web n'est autorisée qu'avec l'accord préalable des détenteurs des droits. [En savoir plus](#)

Terms of use

The ETH Library is the provider of the digitised journals. It does not own any copyrights to the journals and is not responsible for their content. The rights usually lie with the publishers or the external rights holders. Publishing images in print and online publications, as well as on social media channels or websites, is only permitted with the prior consent of the rights holders. [Find out more](#)

Download PDF: 26.11.2025

ETH-Bibliothek Zürich, E-Periodica, <https://www.e-periodica.ch>

IVb 4

Bridges in the New Maritime Station at Naples.

Brücken im neuen Hafenbahnhof in Neapel.

Les ponts dans la nouvelle gare maritime de Naples.

G. Krall,

Professor der Universitäten Rom und Neapel, Rom.

In the new maritime station at Naples, shown in Figs. 1 and 2, which was constructed by the Società Anonima Italiana Ferro-Beton, the chief point of interest is the two bridges which connect the two portions of the construction at the landward and seaward ends. The building is a two storey one and its

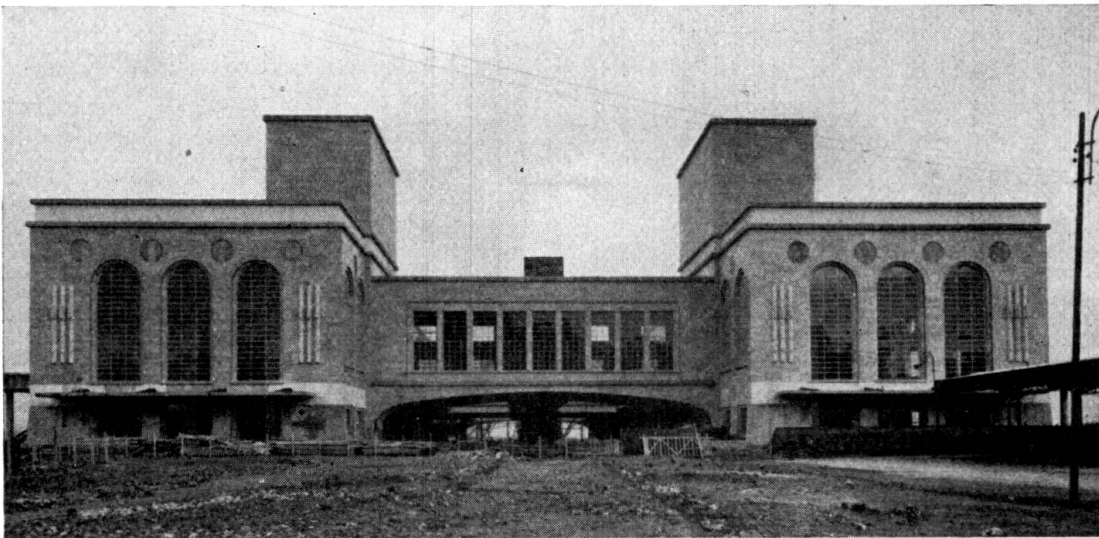


Fig. 1.

supports are the two side walls. One of these walls forms a closed frame in which the hangers are sufficiently slender to allow of its bending resistance being neglected; the other is a double Vierendeel girder as shown in Fig. 4. The two storeys are respectively at 10.15 and 19.10 m above sea level, and span across the railway tracks which are situated at R.L. 3.0 with a clear span of 35 m. The floor at R.L. 10.15 is of coffered construction, the coffers being rectangular with their sides 3.80 and 3.30 m long. The longitudinal ribs are built into the two transverse box-girders at the ends which are thus made particularly resistant to torsion. The box cross section of the end cross girders is enclosed between the two outermost cross ribs and the corresponding portions of the slab, and the

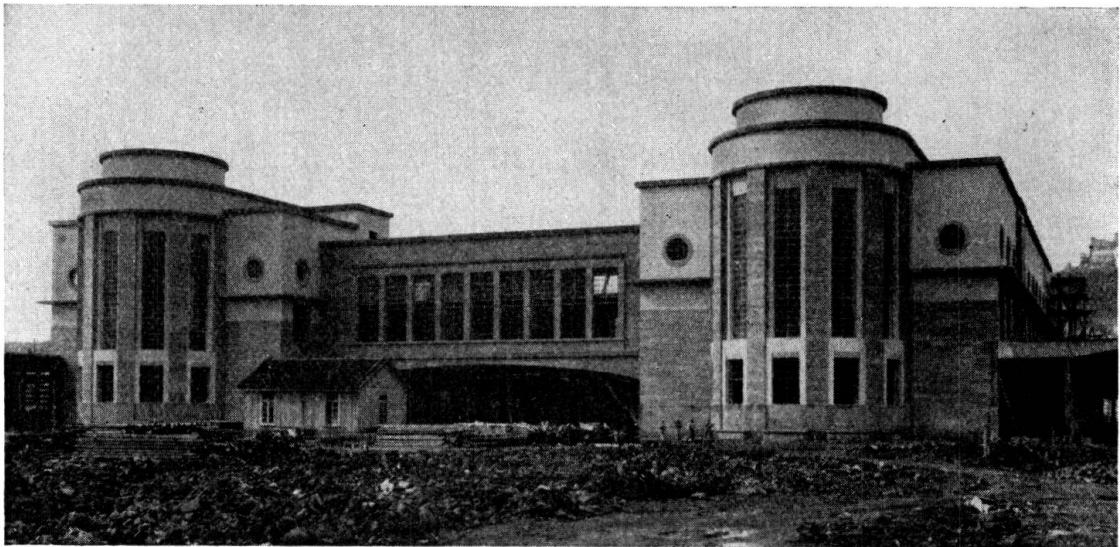


Fig. 2.

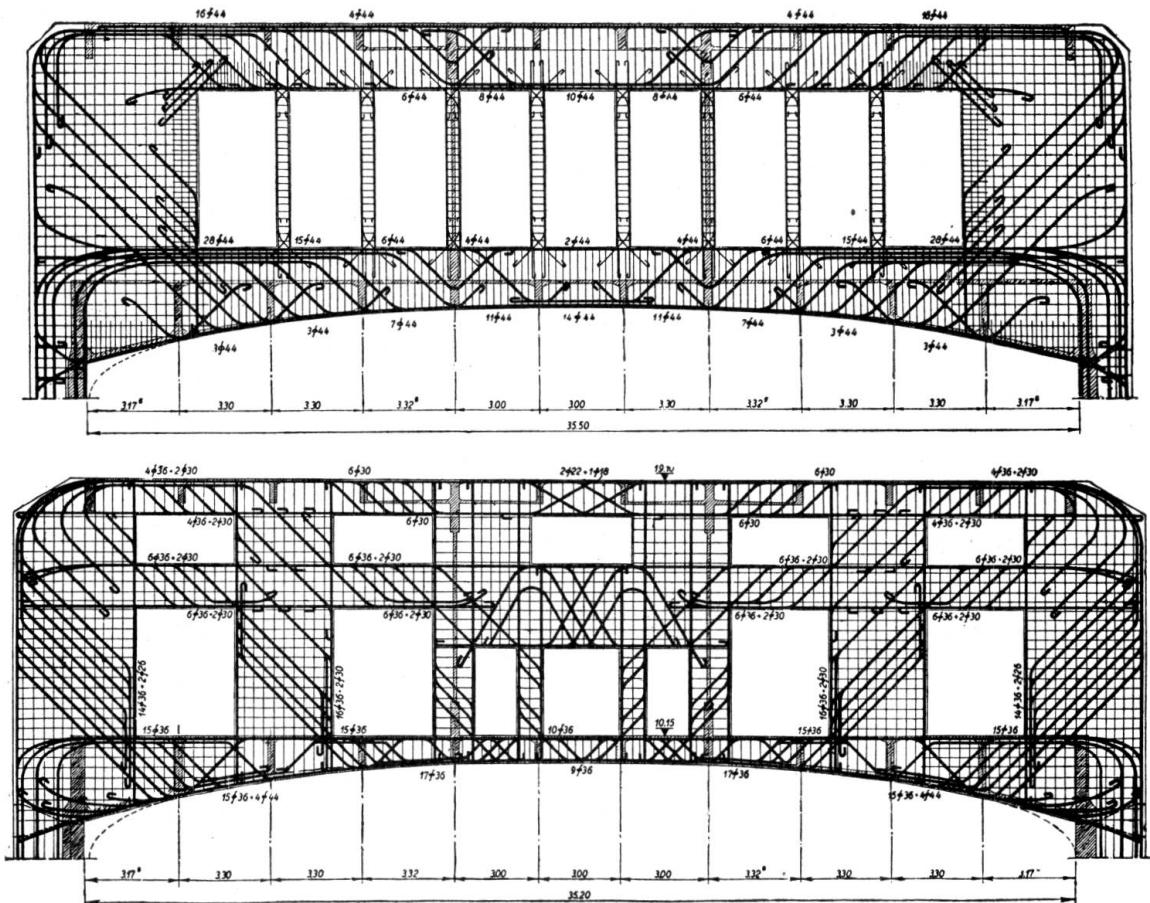


Fig. 3 and 4.

remaining cross ribs may be regarded as suspended from the two main supporting walls. The cross ribs along the axes of the cross walls, which run through the whole height of the storey, may therefore be regarded as infinitely stiff by comparison with the remainder.