

Zeitschrift: Annual report / Swiss federal railways
Herausgeber: Swiss federal railways
Band: - (2003)

Rubrik: Passenger traffic

Nutzungsbedingungen

Die ETH-Bibliothek ist die Anbieterin der digitalisierten Zeitschriften auf E-Periodica. Sie besitzt keine Urheberrechte an den Zeitschriften und ist nicht verantwortlich für deren Inhalte. Die Rechte liegen in der Regel bei den Herausgebern beziehungsweise den externen Rechteinhabern. Das Veröffentlichen von Bildern in Print- und Online-Publikationen sowie auf Social Media-Kanälen oder Webseiten ist nur mit vorheriger Genehmigung der Rechteinhaber erlaubt. [Mehr erfahren](#)

Conditions d'utilisation

L'ETH Library est le fournisseur des revues numérisées. Elle ne détient aucun droit d'auteur sur les revues et n'est pas responsable de leur contenu. En règle générale, les droits sont détenus par les éditeurs ou les détenteurs de droits externes. La reproduction d'images dans des publications imprimées ou en ligne ainsi que sur des canaux de médias sociaux ou des sites web n'est autorisée qu'avec l'accord préalable des détenteurs des droits. [En savoir plus](#)

Terms of use

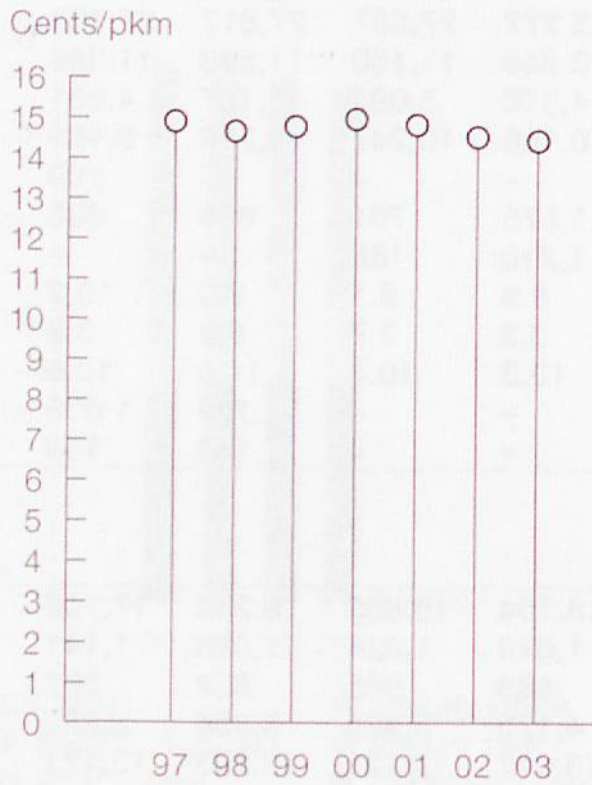
The ETH Library is the provider of the digitised journals. It does not own any copyrights to the journals and is not responsible for their content. The rights usually lie with the publishers or the external rights holders. Publishing images in print and online publications, as well as on social media channels or websites, is only permitted with the prior consent of the rights holders. [Find out more](#)

Download PDF: 02.04.2026

ETH-Bibliothek Zürich, E-Periodica, <https://www.e-periodica.ch>

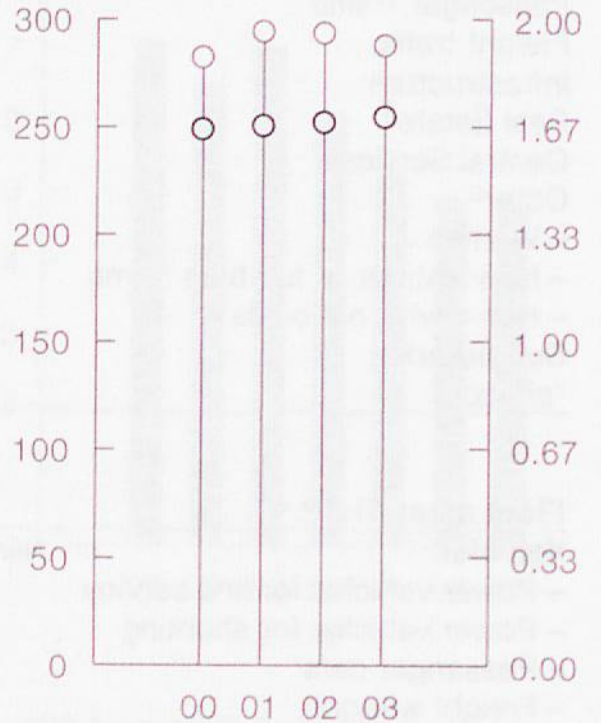
Development of fares

Average nominal income per passenger-km



Regular customers

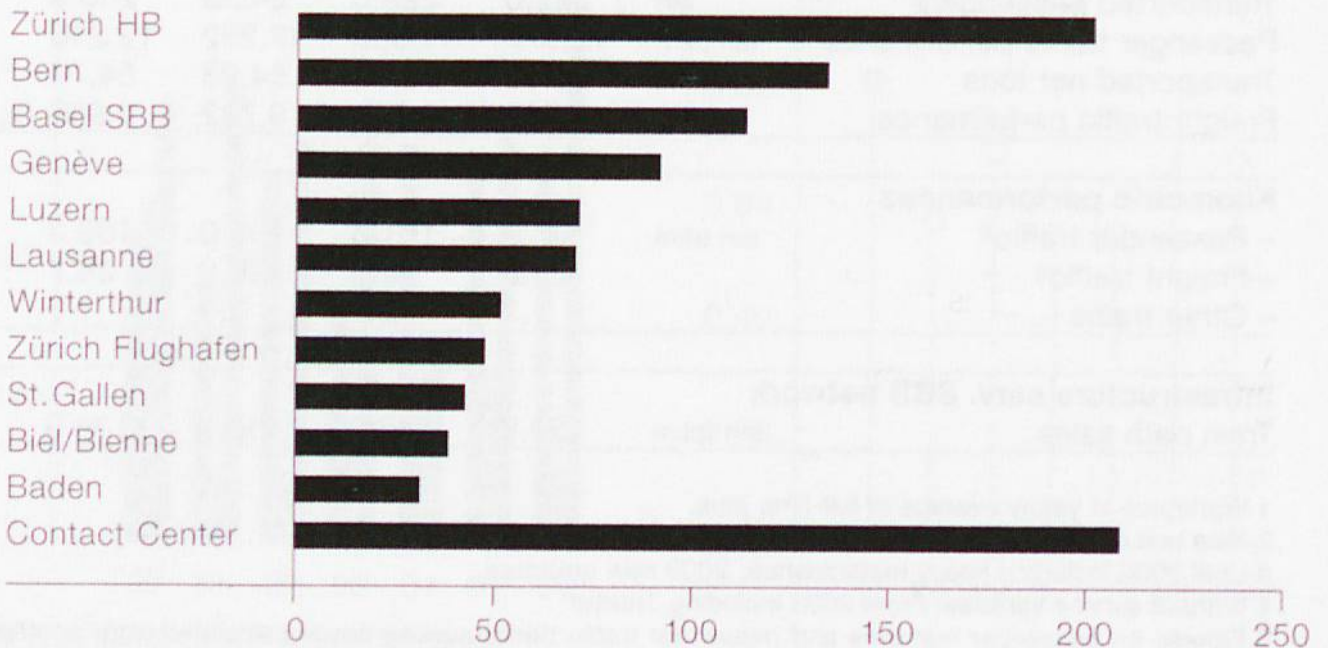
GA in 1,000 1/2-tax in mns



○ General Abonnement holders
● Half-Tax Card holders

The biggest Railway stations

Turnover in CHF millions



Financial matters¹

		2000	2001	2002	2003	03-02 ± %
Operating income	CHF mn	2,690.8	2,711.7	2,991.2	3,085.7	3.2
- Traffic revenues		1,798.5	1,850.9	1,936.8	1,947.6	0.6
Operating expenses		-2,538.1	-2,574.7	-2,817.8	-2,920.2	-3.6
Operating result		152.7	137.0	173.4	165.5	-4.6
EBIT		181.3	161.5	185.7	166.4	-10.4
Annual profit		67.8	80.4	113.7	93.4	-17.8
Gross investments		...	406.0	1 106.6	958.2	-13.4

Productivity, mean values²

Operating expenses per train-km	CHF	-25.9	-25.3	-26.8	-26.7	-0.4
Mean number of passengers per train	Number	111	113	116	112	-3.3
Revenue per passenger trip	CHF	7.24	7.33	7.40	7.05	-4.7
Revenue per passenger-km	cts	14.78	14.61	14.84	14.36	-3.2
Mean travel distance	km	49.00	50.13	49.87	49.10	-1.5

Regular customers

	Average					
	of the year					
Passes and cards in circulation						
- General Abonnements	in 1,000	226	235	247	264	6.9
- Half-Tax Cards		1,884	1,965	1,958	1,920	-1.9

Sales points SBB

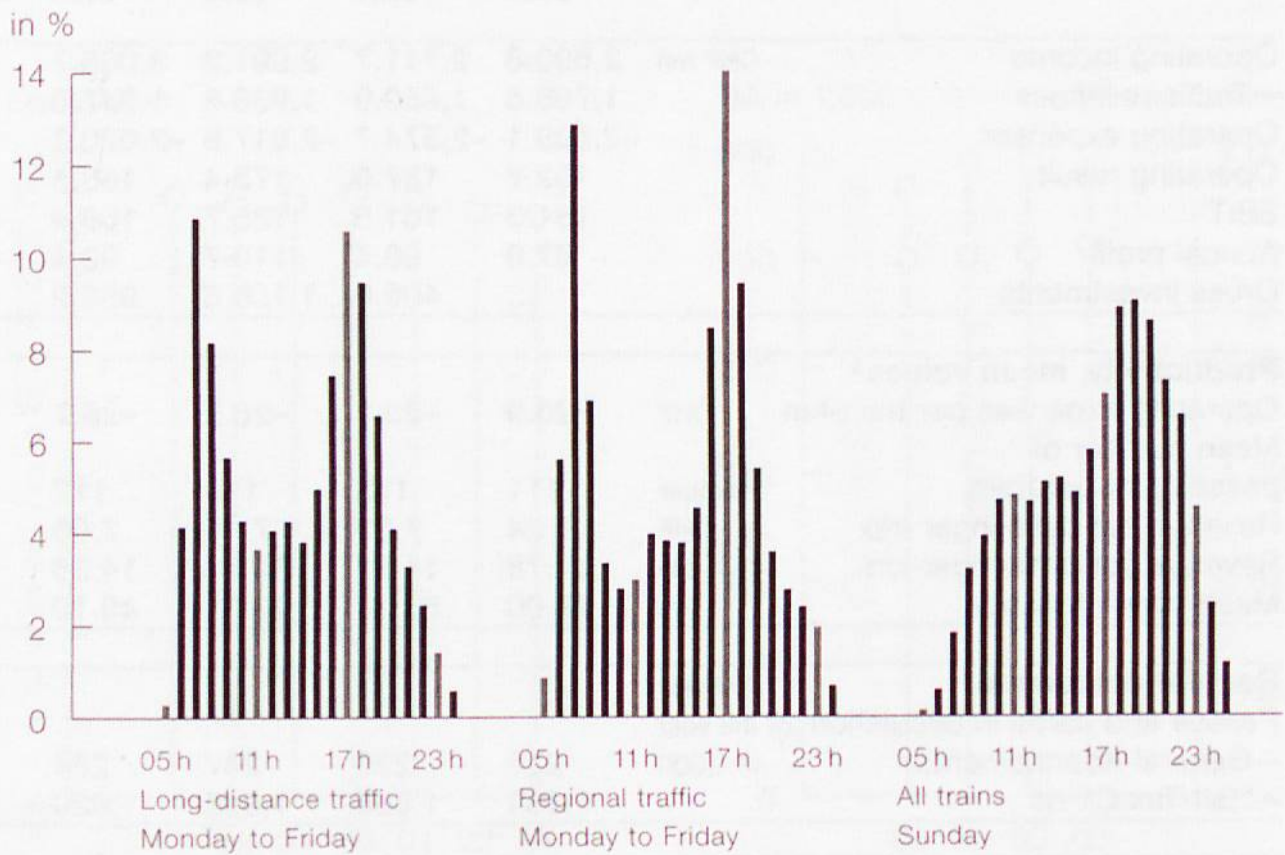
	Number					
attended by SBB staff		788	761	-3.4
attended by third party staff ³		334	305	-8.7
with self-service		69	43	-37.7
		385	413	7.3

1 Segment account. Intra-group revenues and expenses not eliminated.

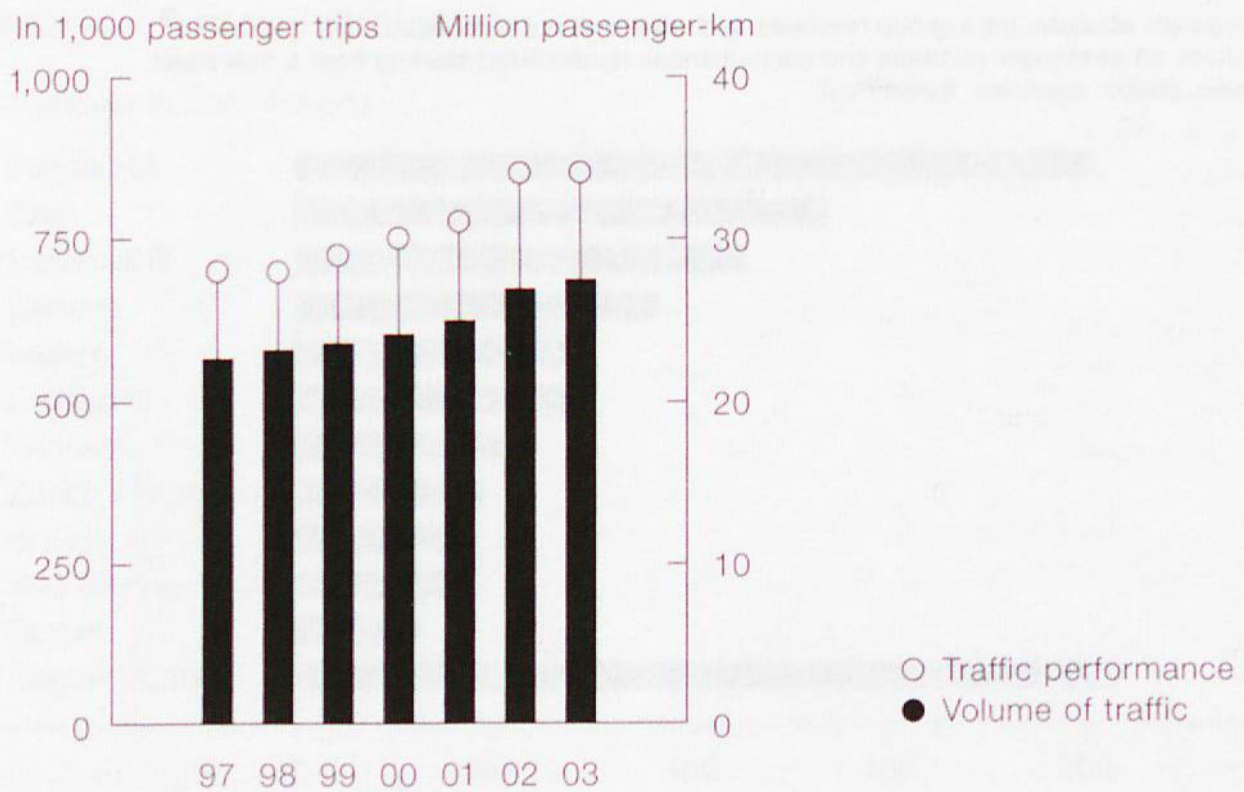
2 Values on passenger numbers and performances recalculated starting from a new basis.

3 avec. shops, agencies, Swiss Post.

Train passenger numbers in the day timeline



Mean daily traffic volumes and performances



Traffic volume and performance¹

		2000	2001	2002	2003	03-02 ± %
Passenger trips	mn	222.0	229.6	245.3	250.3	2.0
Domestic traffic		213.7	220.4	232.9	240.4	3.2
- Individual travel		123.8	124.9	137.2	142.2	3.6
- Group travel		3.1	3.3	4.2	3.3	-21.4
- Season tickets for business+touristic travel		57.7	62.0	64.7	68.1	5.3
- Point-to-point season tickets		29.1	30.2	26.8	26.8	0.0
International travel		8.3	9.2	12.4	9.9	-20.2
Registered luggage						
Suitcases, bags, skis, etc.	1,000	682	621	583	496	-14.8
Bicycles in self-loading mode		363	387	393	450	14.5
Passenger-kilometres¹	mn pkm	10,877	11,509	12,232	12,290	0.5

Operating performances

Mileages of passenger trains	mn trkm	97.85	101.64	105.03	109.32	4.1
- Long-distance traffic		46.45	47.77	48.25	48.66	0.8
- Regional traffic		51.40	53.87	56.78	60.66	6.8

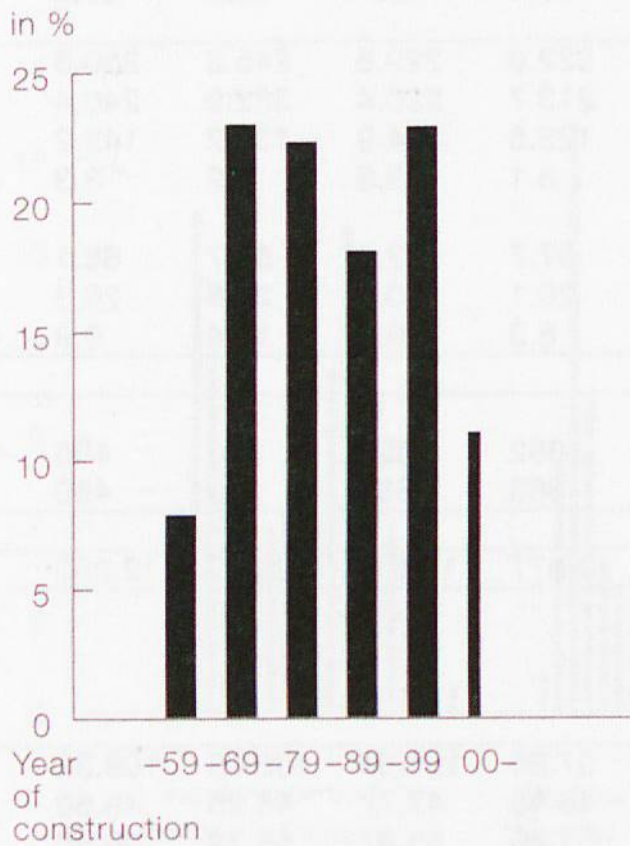
Supply and demand

Seats offered per train						
- Long-distance traffic	Number	628	627	644	645	0.2
- Regional traffic		318	315	322	309	-4.0
Mean seat occupancy rate						
- Long-distance traffic	%	27.4	27.9	27.7	28.5	3.0
- Regional traffic		17.4	17.2	17.7	17.8	0.5

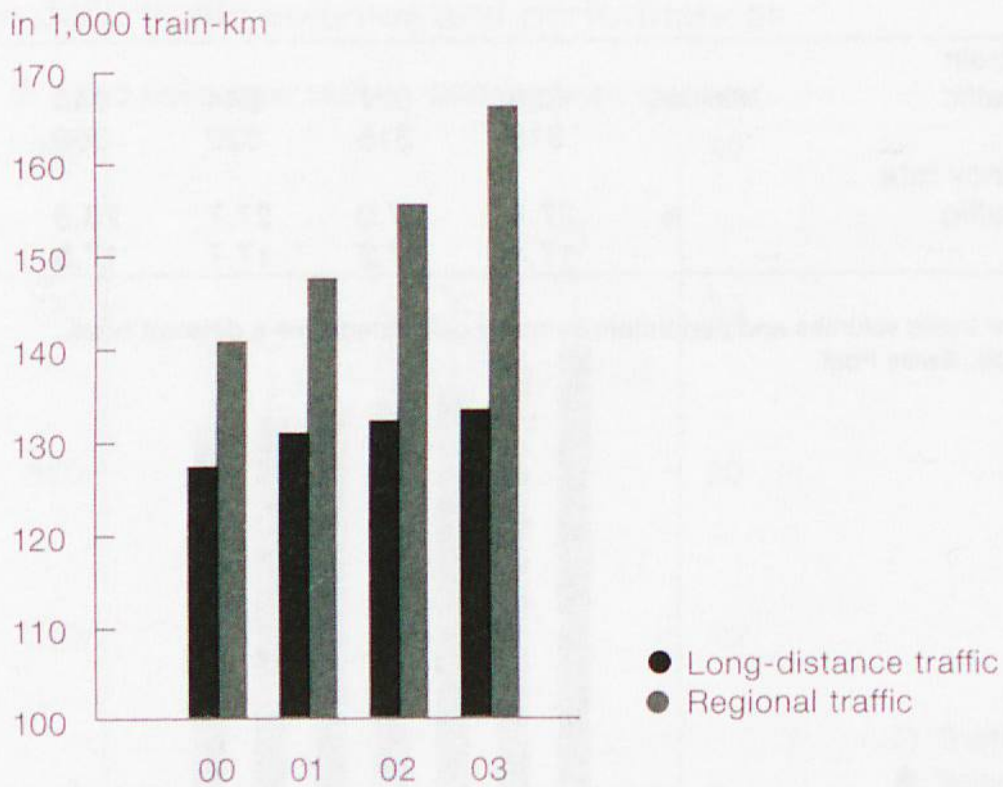
1 Figures on passenger traffic volumes and performances newly calculated from a different base.

2 avec. shops, agencies, Swiss Post.

Age structure of passenger cars



Average daily mileage of passenger trains



Workforce, size of vehicle fleet

	2000	2001	2002	2003	03-02 ± %
Personnel					
Workforce (consolidated)	Number ¹		12 506	12 608	0.8
SBB AG,					
Passenger Traffic Division	10,945	11,160	11,598	11,369	-2.0
Central offices	² 757	922	918	918	-0.4
Sales, customer service	² 1,625	1,776	1,832	1,832	3.2
Production	² 6,718	6,494	6,546	6,546	0.8
- Drivers of line locomotives	² 2,243	2,260	2,342	2,342	3.6
- Train staff	² 1,695	1,645	1,662	1,662	1.0
Maintenance	² 1,871	1,843	1,719	1,719	-6.7
- Rolling stock	² 1,778	1,731	1,630	1,630	-5.8
Other	² 189	563	354	354	-37.1
Subsidiaries	-	-	908	1,239	36.5

						Rating kW/unit
Vehicles, as at 31.12.³	Number					
Traction vehicles		708	679	694	780	2 796
- Narrow gauge		33	33	32	28	794
Line locomotives		308	304	322	367	4 151
Power cars		271	262	275	311	1 984
- Diesel-powered		-	-	-	3	550
Shunting locomotives		68	60	57	66	531
- Diesel-powered		10	8	7	7	452
Shunting tractors		61	53	40	36	159
- Diesel-powered		42	38	25	27	135

						Seats/ car
Passenger cars						
SBB-own		4,125	3,925	3,856	3,883	77.0
- Narrow gauge		97	90	80	78	51.9
- Air-conditioned		1,198	1,375	1,428	1,456	75.0
- Double-deck cars		582	595	638	667	112.2
- Passenger cars 1 st and 2 nd class		2,983	2,789	2,750	2,677	79.7
- Dining cars ⁴		43	37	34	45	53.1
- Couchette/sleeping cars		72	69	50	50	57.4
- Driving trailers		445	444	444	458	80.8
- Articulated cars		390	444	452	534	63.9
- Luggage vans		192	142	126	119	-
Private cars		111	121	123	148	-

						Rating kW/unit
These include:						
- Tilting trains		16	24	24	30	5,200
- S-Bahn trainsets		133	132	132	132	3,103
- IC double-deck cars		237	250	293	322	-

1 Average yearly workforce expressed in full-time jobs.

2 Different organisation structure. Not comparable to following years.

3 Including Turbo.

4 Without dining cars in ICNs and Bistro cars in IC2000 trains, but with Brünig dining cars and laid up ones.