

SBB group

Objektyp: **Group**

Zeitschrift: **Annual report / Swiss federal railways**

Band (Jahr): - **(2003)**

PDF erstellt am: **02.10.2023**

Nutzungsbedingungen

Die ETH-Bibliothek ist Anbieterin der digitalisierten Zeitschriften. Sie besitzt keine Urheberrechte an den Inhalten der Zeitschriften. Die Rechte liegen in der Regel bei den Herausgebern.

Die auf der Plattform e-periodica veröffentlichten Dokumente stehen für nicht-kommerzielle Zwecke in Lehre und Forschung sowie für die private Nutzung frei zur Verfügung. Einzelne Dateien oder Ausdrucke aus diesem Angebot können zusammen mit diesen Nutzungsbedingungen und den korrekten Herkunftsbezeichnungen weitergegeben werden.

Das Veröffentlichen von Bildern in Print- und Online-Publikationen ist nur mit vorheriger Genehmigung der Rechteinhaber erlaubt. Die systematische Speicherung von Teilen des elektronischen Angebots auf anderen Servern bedarf ebenfalls des schriftlichen Einverständnisses der Rechteinhaber.

Haftungsausschluss

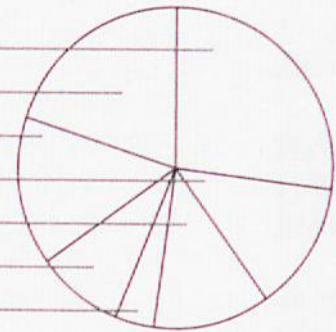
Alle Angaben erfolgen ohne Gewähr für Vollständigkeit oder Richtigkeit. Es wird keine Haftung übernommen für Schäden durch die Verwendung von Informationen aus diesem Online-Angebot oder durch das Fehlen von Informationen. Dies gilt auch für Inhalte Dritter, die über dieses Angebot zugänglich sind.

The SBB franc

Income:

Where does the money come from?

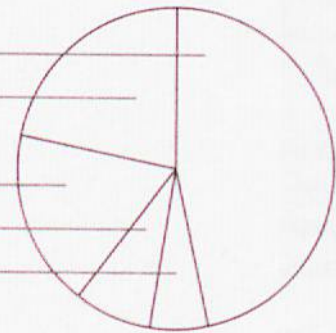
Passengers traffic	CHF 0.27
Federal government infrastructure payements	CHF 0.20
Freight traffic	CHF 0.15
Miscellaneous	CHF 0.13
Ancillary income	CHF 0.12 cents
Grants	CHF 0.09
Rents	CHF 0.04



Expense:

Where does the money go to?

Personnel	CHF 0.47
Miscellaneous	CHF 0.22
Depreciations	CHF 0.18
Materials	CHF 0.8
Not capitalisatal: sable expenses	CHF 0.06 cents

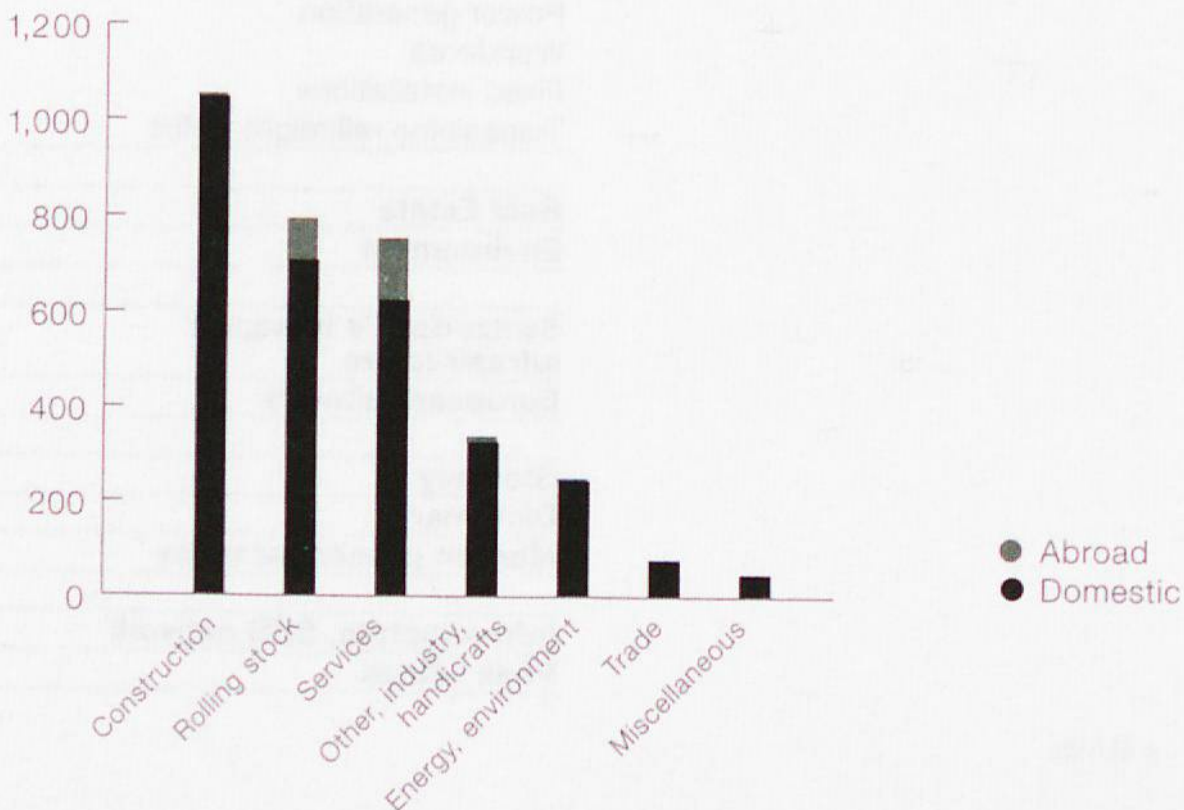


SBB as contract placer

40,877 suppliers, 97% of which domestic.

Outlay CHF 3.315 billion, 92% of which domestic.

CHF millions



Consolidated Income Statement

		2000	2001	2002	2003	03-02 ± %
Operating revenues	CHF mn	5,942	6,031	6,324	6,490	2.6
Traffic revenues		2,849	2,920	2,917	2,906	-0.4
- Passenger traffic		1,635	1,714	1,797	1,796	-0.1
- Freight traffic		1,089	1,049	985	990	0.4
- Operating services		114	141	119	101	-15.1
- Infrastructure		12	15	15	19	20.8
Federal and cantonal grants		621	637	618	617	0.0
Rental revenue from real estate ¹		249	263	280	288	2.9
Other operating revenues		529	540	588	754	28.3
Other revenues		15	25	151	108	-28.5
Own work capitalised		457	577	549	603	9.7
Fed. government grants for infrastructure		1,295	1,225	1,307	1,333	2.0
Revenue reductions		-73	-156	-86	-118	-37.2
Operating expenses		-5,620	-5,786	-6,130	-6,313	-3.0
Expenses for materials		-341	-445	-466	-479	-2.7
Personnel expenses		-2,864	-2,855	-3,022	-2,987	1.1
Other operating expenses		-1,211	-1,194	-1,138	-1,350	-18.7
Depreciations		-879	-1,003	-1,180	-1,201	-1.8
Non-capitalisable investment expenses		-326	-289	-324	-296	8.7
Operating revenues before ARR 16 paymt.		321	246	194	177	-8.6
Provisions ARR 16 staff provident institutions		-	-	-183	-132	27.9
Operating revenues after ARR 16 paymt.		321	246	11	45	311.6
EBIT		353	452	122	200	63.8
Net profit of SBB Group		140	314	-12	25	307.6

Balance sheet

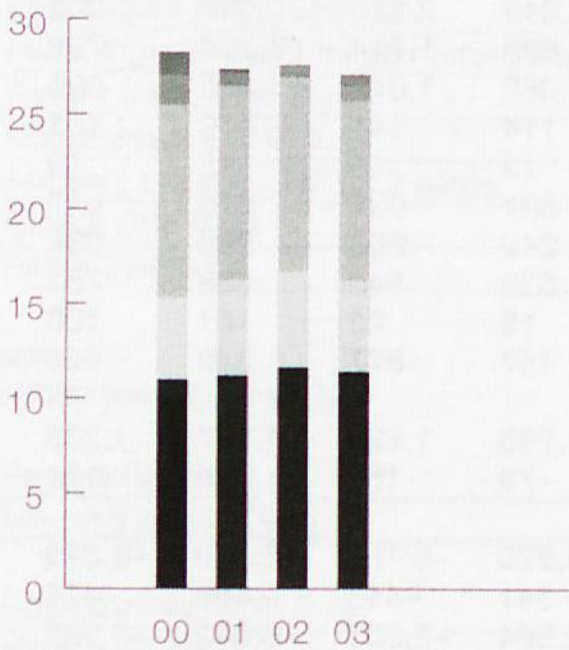
Assets	CHF mn	29,020	28,547	28,783	28,779	0.0
Current assets		2,578	2,221	2,273	2,048	-9.9
Fixed assets		26,442	26,325	26,510	26,731	0.8
- Financial investments		5,030	4,302	3,150	2,275	-27.8
- Tangible assets and assets under construction		21,379	21,940	23,156	24,246	4.7
- Intangible assets		33	83	204	209	2.7
Liabilities		29,020	28,547	28,783	28,779	0.0
Current liabilities		2,046	2,398	2,113	2,014	-4.7
Non-current liabilities		15,634	14,487	15,019	15,082	0.4
Minortiy shareholdings		13	17	17	23	35.4
Equity		11,327	11,645	11,634	11,660	0.2

¹ Not identical to Real Estate unit.

Personnel

Workforce¹ per business field

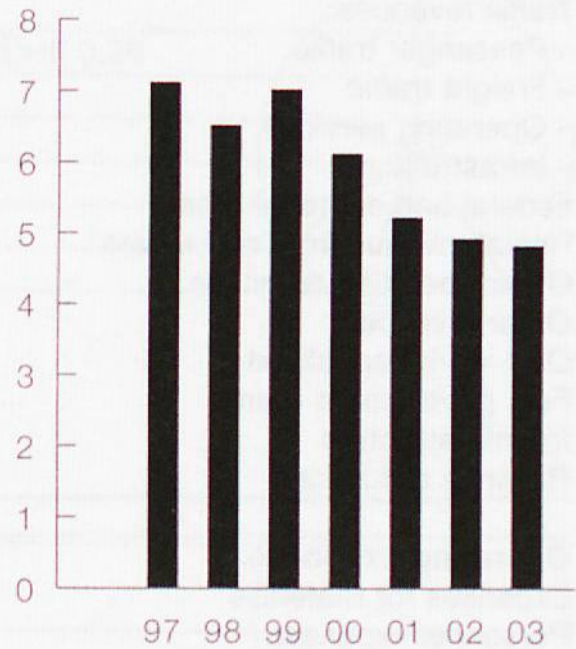
Full-time employees in thousands



- Other
- Central Services
- Real Estate
- Infrastructure
- Freight traffic
- Passenger traffic

Industrial accidents¹

Number per 100 employees

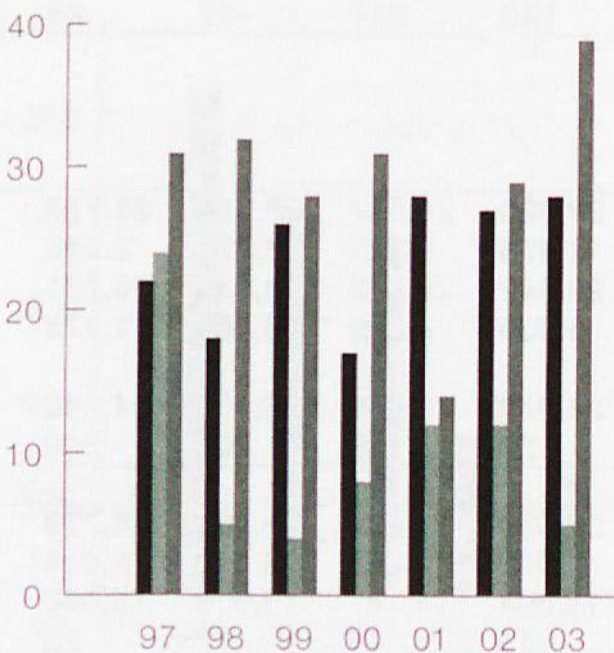


¹ SBB AG and SBB Cargo AG

Accidents

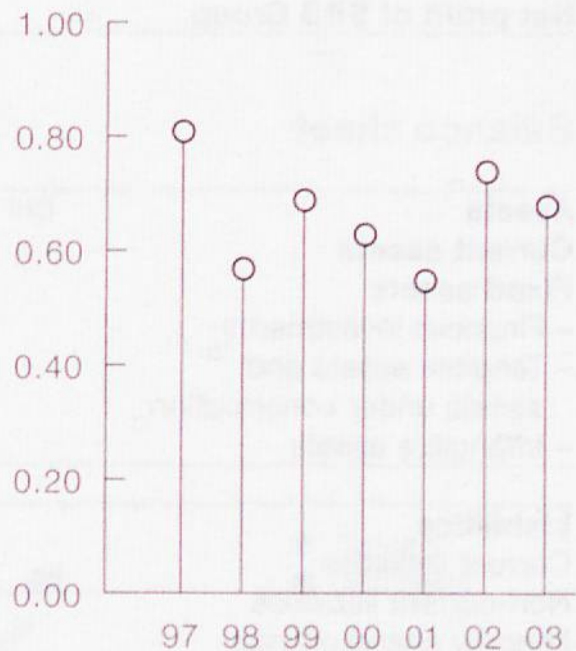
Registered in accordance with the standards of the International Union of Railways UIC.

Number



- Collisions (incl. shunting runs)
- Incidents on level crossings
- Personal accidents in connection with moving vehicles

Incidents per million train-km



Workforce, vehicle fleet, line length

		2000	2001	2002	2003	03-02 ± %
Personnel						
SBB Group (consolidated)	Number ¹			28,786	28,707	-0.3
SBB AG and SBB Cargo AG²		28,272	27,387	27,617	27,104	-1.9
Passenger Traffic		10,945	11,160	11,598	11,369	-2.0
Freight traffic		4,370	5,091	5,107	4,851	-5.0
Infrastructure		10,166	10,247	10,256	9,469	-7.7
Real Estate ²		-	-	-	790	
Central Services		1,575	701	656	625	-4.7
Other ³		1,216	188	-	-	³
- Women	%	8.9	9.1	9.9	10.2	3.0
- New entries, in full-time terms		3.3	7.7	6.2	3.8	-38.7
- Non-Swiss nationals		10.3	10.7	11.5	10.6	-7.8
Subsidiaries		-	-	1 169	1 603	37.1
"chance"		-	-	150	163	8.7

Fleet as at 31.12.⁴						± 03-02
Vehicles	Number	18,754	18,635	18,236	17,702	-534
- Power vehicles for line service		1,029	1,024	1,055	1,141	86
- Power vehicles for shunting		583	565	532	507	-25
- Passenger cars		4,125	3,925	3,856	3,883	27
- Freight wagons		13,017	13,121	12,793	12,171	-622
Railway line network	km	2,973	2,986	2,982	3,080	98

Traffic volumes and performances

						03-02 ± %
Traffic						
Transported passengers	mn	222.0	229.6	245.3	250.3	2.0
Passenger traffic performance	mn pkm	10,877	11,509	12,232	12,290	6.3
Transported net tons	mn tons	60.50	59.00	54.93	54.78	-0.3
Freight traffic performance	mn tkm	10,786	10,534	9,732	9,936	2.1
Kilometric performances						
- Passenger traffic ⁵	mn trkm	97.9	101.6	105.0	109.3	4.1
- Freight traffic ⁵		28.0	28.0	26.8	26.7	-0.4
- Other trains		1.7	2.7	3.4	1.7	-49.3
Infrastructure serv. SBB network						
Train path sales	mn tpkm	130.8	132.9	135.5	138.0	1.8

1 Workforce in yearly average of full-time jobs.

2 New unit of Central Services, formerly part of Infrastructure.

3 Until 2000 including heavy maintenance. 2003 new structure.

4 Without service vehicles. From 2003 including Turbo

5 Figures on passenger numbers and passenger traffic performances newly calculated from another base.