

**Zeitschrift:** Annual report / Swiss federal railways  
**Herausgeber:** Swiss federal railways  
**Band:** - (2003)  
  
**Rubrik:** Safety

### **Nutzungsbedingungen**

Die ETH-Bibliothek ist die Anbieterin der digitalisierten Zeitschriften auf E-Periodica. Sie besitzt keine Urheberrechte an den Zeitschriften und ist nicht verantwortlich für deren Inhalte. Die Rechte liegen in der Regel bei den Herausgebern beziehungsweise den externen Rechteinhabern. Das Veröffentlichen von Bildern in Print- und Online-Publikationen sowie auf Social Media-Kanälen oder Webseiten ist nur mit vorheriger Genehmigung der Rechteinhaber erlaubt. [Mehr erfahren](#)

### **Conditions d'utilisation**

L'ETH Library est le fournisseur des revues numérisées. Elle ne détient aucun droit d'auteur sur les revues et n'est pas responsable de leur contenu. En règle générale, les droits sont détenus par les éditeurs ou les détenteurs de droits externes. La reproduction d'images dans des publications imprimées ou en ligne ainsi que sur des canaux de médias sociaux ou des sites web n'est autorisée qu'avec l'accord préalable des détenteurs des droits. [En savoir plus](#)

### **Terms of use**

The ETH Library is the provider of the digitised journals. It does not own any copyrights to the journals and is not responsible for their content. The rights usually lie with the publishers or the external rights holders. Publishing images in print and online publications, as well as on social media channels or websites, is only permitted with the prior consent of the rights holders. [Find out more](#)

**Download PDF:** 25.08.2025

**ETH-Bibliothek Zürich, E-Periodica, <https://www.e-periodica.ch>**

## Improved safety for customers and staff.

Safety shapes and affects all SBB's daily operations. The number of operating incidents fell by 7% in 2003. An all-embracing safety management system ensures that a high level of safety is maintained for customers and staff.

SBB pays particular attention to the safety of its customers. In 2003, sadly, SBB suffered its first major accident involving passenger trains for five years. Two heavily loaded passenger trains collided in Zurich Oerlikon station on 24 October. One passenger lost her life and over a hundred were injured.

**Fewer operating accidents:** The number of operating incidents (e.g. derailments / collisions, persons killed or injured by trains, accidents at level crossings) fell by 7% in 2003 to 95.

About half of these accidents were caused by passengers and third parties, and generally the victims themselves bear a high proportion of the blame. The main causes of accidents are people crossing the tracks without permission, trespassing on the permanent way and jumping on and off moving trains. SBB is responding to this situation with various educational campaigns, some of them targeting children. Also, 75 more level crossings have been modernised and 24 stations equipped with an automatic system to warn of the approach of non-stop trains. At the same time the number of derailments fell by half, from 27 in 2002 to 14 in 2003; 60% of these incidents took place in connection with shunting operations.

**Fewer industrial accidents.** Staff safety is also a major concern. SBB is constantly updating its current safety system, taking due account of technical advances, commercial constraints and potential threats.

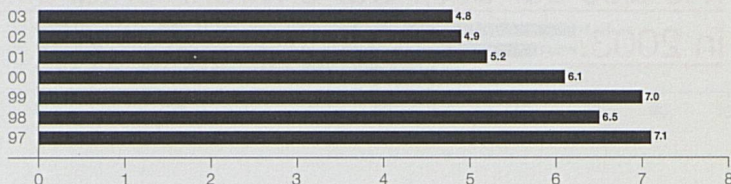
2003 brought a further improvement in staff safety. Accidents at work are on a downward trend: the rate fell from 4.9 to 4.8 accidents for every hundred employees. There was also a further 5% reduction in the number of days lost due to accidents at work. Work continues on reducing the risk of accident still further: as part of the Stop Risk project, various information campaigns are being conducted to raise awareness of hazards and instruct staff in how to cope with them.

There were fewer attacks on employees in the year under review: the number of cases involving violence against train crews fell by 17%.



### Safety at work<sup>1</sup>.

Work accidents per 100 employees



<sup>1</sup> SBB AG and SBB Cargo