

**Zeitschrift:** Annual report / Swiss federal railways  
**Herausgeber:** Swiss federal railways  
**Band:** - (2002)  
  
**Rubrik:** SBB group

### **Nutzungsbedingungen**

Die ETH-Bibliothek ist die Anbieterin der digitalisierten Zeitschriften auf E-Periodica. Sie besitzt keine Urheberrechte an den Zeitschriften und ist nicht verantwortlich für deren Inhalte. Die Rechte liegen in der Regel bei den Herausgebern beziehungsweise den externen Rechteinhabern. Das Veröffentlichen von Bildern in Print- und Online-Publikationen sowie auf Social Media-Kanälen oder Webseiten ist nur mit vorheriger Genehmigung der Rechteinhaber erlaubt. [Mehr erfahren](#)

### **Conditions d'utilisation**

L'ETH Library est le fournisseur des revues numérisées. Elle ne détient aucun droit d'auteur sur les revues et n'est pas responsable de leur contenu. En règle générale, les droits sont détenus par les éditeurs ou les détenteurs de droits externes. La reproduction d'images dans des publications imprimées ou en ligne ainsi que sur des canaux de médias sociaux ou des sites web n'est autorisée qu'avec l'accord préalable des détenteurs des droits. [En savoir plus](#)

### **Terms of use**

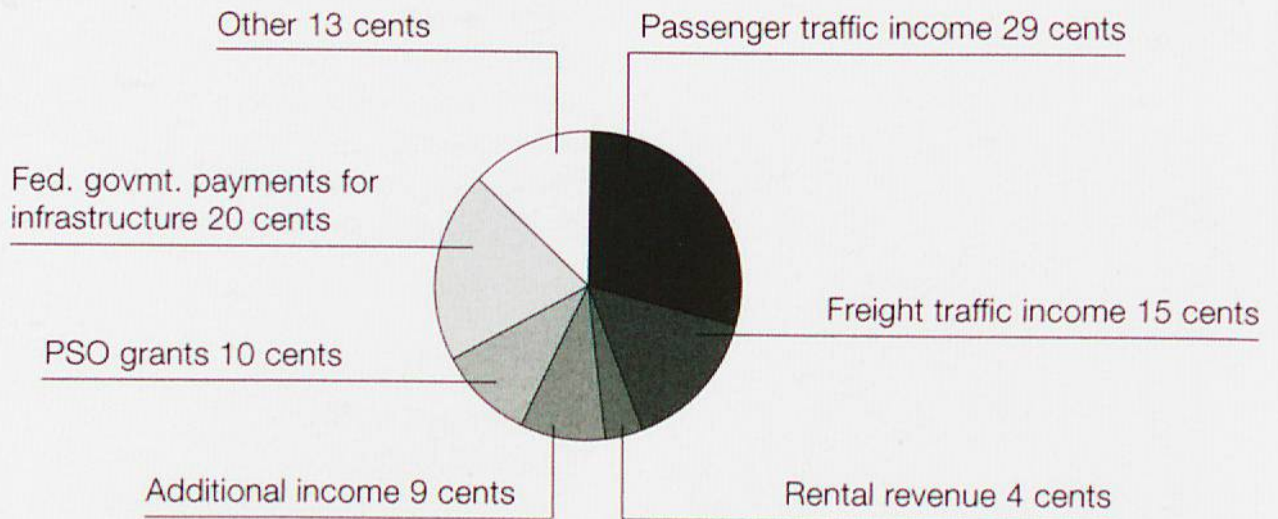
The ETH Library is the provider of the digitised journals. It does not own any copyrights to the journals and is not responsible for their content. The rights usually lie with the publishers or the external rights holders. Publishing images in print and online publications, as well as on social media channels or websites, is only permitted with the prior consent of the rights holders. [Find out more](#)

**Download PDF:** 17.04.2026

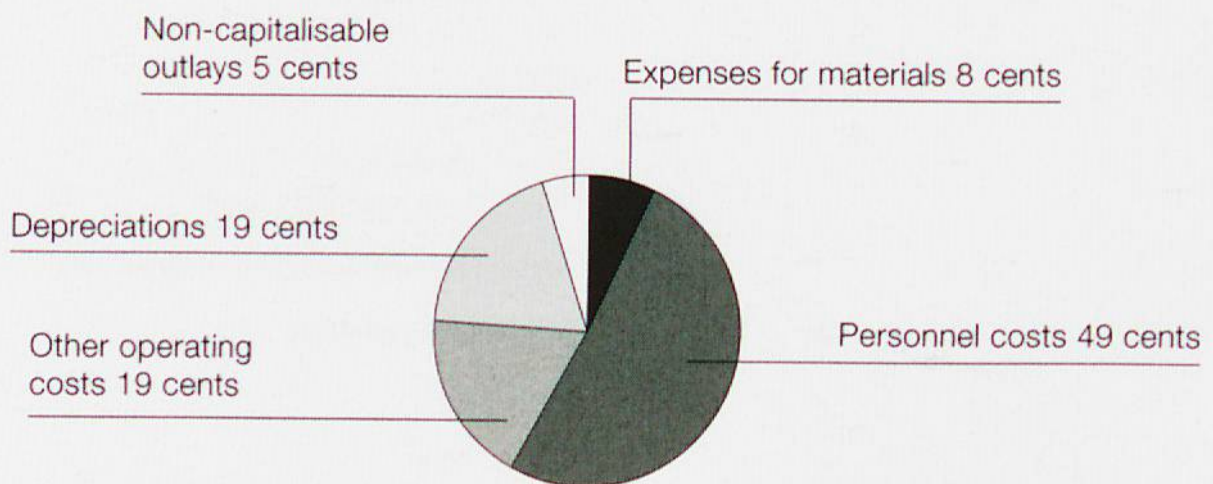
**ETH-Bibliothek Zürich, E-Periodica, <https://www.e-periodica.ch>**

## The SBB franc.

### Where it comes from Income



### Where it goes Expense



## Profit and Loss Account.

		1999	2000	2001	2002	02-01 ± in %
<b>Income</b>	CHF mn	5,756	5,942	6,031	<b>6,324</b>	4.9
Traffic income		2,744	2,849	2,920	2,917	-0.1
- Passenger traffic		1,608	1,635	1,714	1,797	4.8
- Freight traffic		1,013	1,089	1,049	985	-6.1
- Operating services		114	114	141	119	-15.8
- Infrastructure		10	12	15	15	2.7
Compensations for services ordered		683	621	637	618	-3.0
Revenue from real estate <sup>1</sup>		245	249	263	280	6.5
Additional income		485	529	540	588	8.9
Sundry earnings		7	15	25	151	499.2
Own services		382	457	577	549	-4.8
Fed. govt. payments for infrastructure		1,273	1,295	1,225	1,307	6.7
Earnings reductions		-64	-73	-156	-86	44.8
<b>Operating expenses</b>		<b>-5,252</b>	<b>-5,620</b>	<b>-5,786</b>	<b>-6,130</b>	<b>-6.0</b>
Expenses for materials		-307	-341	-445	-466	-4.7
Personnel costs		-2,796	-2,864	-2,855	-3,022	-5.8
Other operating costs		-993	-1,211	-1,194	-1,138	4.7
Depreciations		-852	-879	-1,003	-1,180	-17.7
Non-capitalisable investments		-304	-326	-289	-324	-12.0
<b>Operating income before ARR16 paymt.</b>		<b>505</b>	<b>321</b>	<b>246</b>	<b>194</b>	<b>-21.0</b>
Provisions staff provident inst. ARR16		-	-	-	-183	-
<b>Operating income after ARR16 paymt.</b>		<b>505</b>	<b>321</b>	<b>246</b>	<b>11</b>	<b>-95.5</b>
<b>EBIT</b>		<b>420</b>	<b>353</b>	<b>452</b>	<b>122</b>	<b>-73.0</b>
<b>Group result</b>		<b>118</b>	<b>140</b>	<b>314</b>	<b>-12</b>	<b>-103.8</b>

## Balance Sheet.

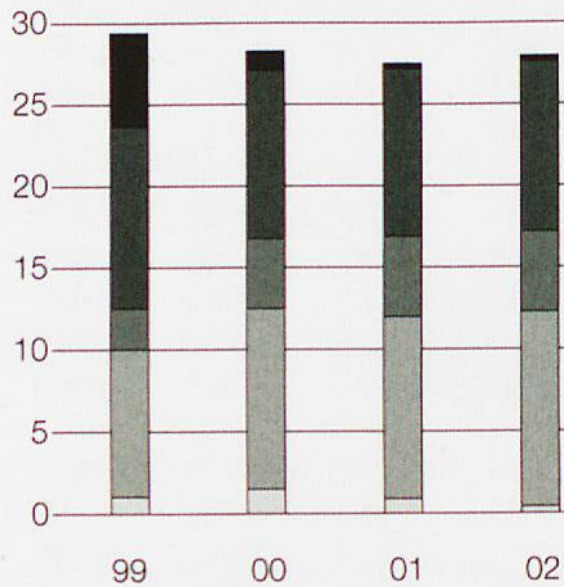
	CHF mn	28,741	29,020	28,547	<b>28,783</b>	0.8
<b>Assets</b>						
Current assets		2,068	2,578	2,221	2,273	2.3
Fixed assets		26,673	26,442	26,325	26,510	0.7
- Financial investments		5,863	5,030	4,302	3,150	-26.8
- Tangible assets and a. under constr.		20,776	21,379	21,940	23,156	5.5
- Intangible assets		34	33	83	204	144.6
<b>Liabilities</b>		<b>28,741</b>	<b>29,020</b>	<b>28,547</b>	<b>28,783</b>	<b>0.8</b>
Current liabilities		1,831	2,046	2,398	2,113	-11.9
Non-current liabilities		15,701	15,634	14,487	15,019	3.7
Minority holdings		12	13	17	17	1.2
Equity capital		11,197	11,327	11,645	11,634	-0.1

<sup>1</sup> Not identical to business field Real Estate.

## Workforce.

**Breakup per Division**

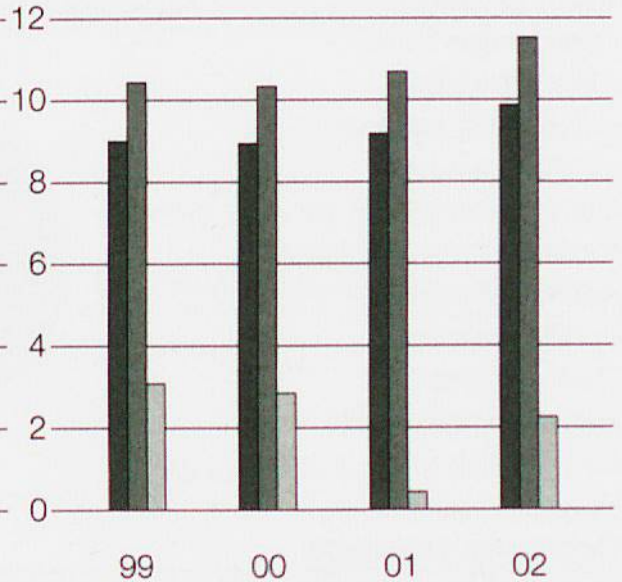
Full-time jobs in thousand



- Other
- Infrastructure
- Freight traffic
- Passenger traffic
- Central Services

**Quotas**

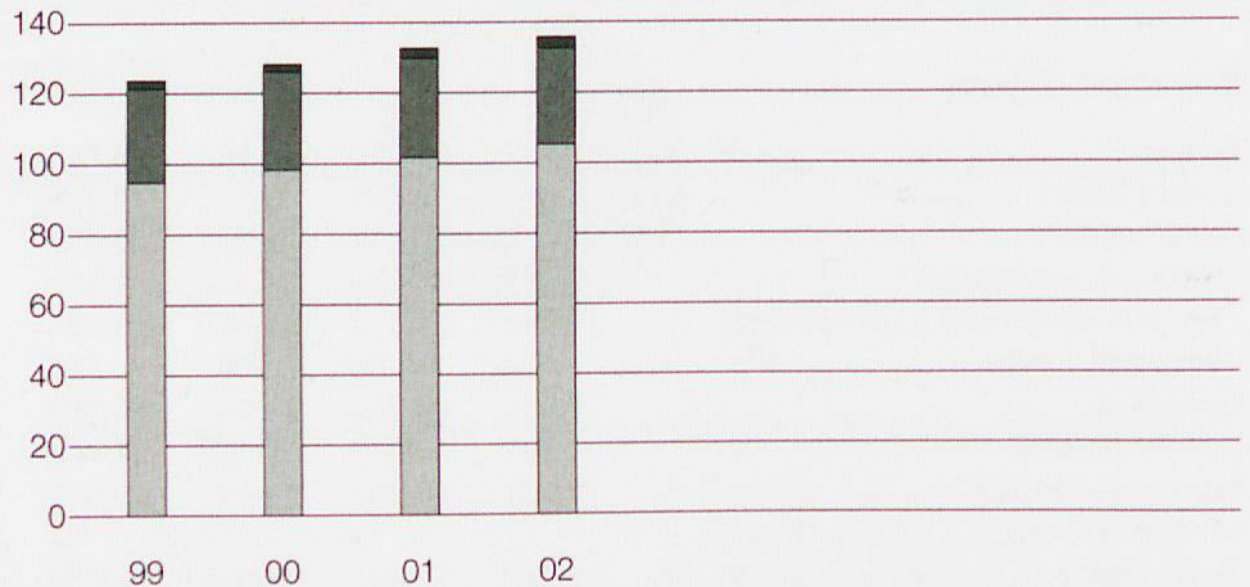
%



- Woman
- Non-Swiss nationals
- In training, partially in Login

## Mileages of SBB trains, broken up per type of traffic.

Million train-km



- Passenger traffic
- Freight traffic
- Other trains

## Quantities relating to SBB Group.

		1999	2000	2001	2002	02-01 ± in %
<b>Workforce, yearly average</b>						
<b>expressed in full-time jobs<sup>1</sup></b>	Number	29,202	28,272	27,387	27,767	7
Central services <sup>2</sup>		1,032	1,575	701	657	7
Passenger traffic <sup>3</sup>		8,950	10,945	11,160	11,598	7
Freight traffic		2,395	4,370	5,091	5,107	7
Infrastructure		11,269	10,166	10,247	10,256	7
Other <sup>4</sup>		5,556	1,216	188	149	7
- New entries, in full-time terms	%	1.3	3.3	7.7	6.2	7
- Women		9.0	8.9	9.1	9.9	7
- Non-Swiss nationals		10.4	10.3	10.7	11.5	7
- In training <sup>5</sup>		3.0	2.8	0.4	2.2	7
<b>Network length</b>	km	2,979	2,973	2,986	2,982	-0.2
<b>Fleet, as at 31 December<sup>6</sup></b>						
<b>Vehicles</b>	Number	...	19,198	19,057	17,842	±02-01 -1,215
- Power vehicles for line service		972	1,029	1,024	1,055	31
- Power vehicles for shunting		...	1,027	987	953	-34
- Passenger cars		4,222	4,125	3,925	3,856	-69
- Freight wagons		13,132	13,017	13,121	11,978	-1,143

## Traffic volumes and performances.

						02-01 ± in %
<b>Traffic</b>						
Transported passengers	mn	275.9	286.8	304.2	320.3	5.3
Passenger traffic performance	mn pkm	12,615	12,835	13,365	14,248	6.6
Transported net tons	mn tons	57.34	60.50	59.00	54.93	-6.9
Freight traffic performance	mn tkm	9,797	10,786	10,534	9,732	-7.6
<b>Kilometric performances</b> mn train-km						
- Passenger traffic		94.8	97.9	101.6	105.2	3.5
- Freight traffic		26.6	28.0	28.0	26.8	-4.3
- Other trains		1.7	1.7	2.7	3.4	22.7
<b>Infrastructure serv. SBB network</b>						
Train path sales	mn trpath-km	127.5	130.8	132.9	135.5	2.0

<sup>1</sup> Without companies in which SBB holds shares.

<sup>2</sup> Until 2001 including staff in training for occupations recognised by a federal office.

<sup>3</sup> Including Brünig (only narrow-gauge line of SBB).

<sup>4</sup> Until 2000 including heavy maintenance.

<sup>5</sup> From 2001 without occupations recognised by a federal office (newly in login).

<sup>6</sup> Without service vehicles.

<sup>7</sup> Due to outsourcings, a comparison with prior-year figures is not possible.

## Real Estate.

		1999	2000	2001	2002	02-01 ± in %
<b>Income<sup>1</sup></b>	CHF mn	231.4	249.8	269.9	287.4	6.5
Park & Rail <sup>2</sup>		0.1	-0.1	12.3	15.0	22.0
Fixed rents		85.1	89.9	96.0	160.8	67.5
Turnover-related rents		112.0	113.7	115.3	63.6	-44.8
Interests for rights to build		20.5	23.7	23.9	25.2	5.4
Promotions		2.2	2.7	3.5	3.5	-
Other rents		0.8	0.9	0.5	2.4	380.0
Other revenues		10.7	19.0	18.4	16.9	-8.2
<b>Personnel costs</b>		...	29.2	32.6	34.9	7.1
Maintenance		21.9	20.4	20.2	25.8	27.7
Rent expenses for installations		8.8	12.0	12.2	17.0	39.3
<b>Investments</b>		84.7	85.1	158.7	177.0	11.5
Book value of fixed assets		...	2,704.9	2,793.7	2,877.1	3.0
Gross proceeds from the sale of fixed assets		61.6	35.8	43	64.3	49.5
<b>Quantities</b>	Number					±02-01
.avec shops		3	3	9	14	5
Aperto shops		26	25	26	25	-1

## Stations, doors into the city and out to the wide world.

Arriving and departing passengers on a daily average 1999

Zürich HB <sup>3</sup>	314,377	Zug	53,688
Zürich Stadelhofen <sup>4</sup>	140,068	Luzern	50,000
Bern <sup>5</sup>	127,394	Thun	44,194
Zürich Oerlikon	108,502	Uster	43,132
Winterthur	98,772	Genève	42,628
Olten	81,428	Baden	42,438
Basel SBB	72,068	Biel/Bienne	38,166
Lausanne	73,558	St. Gallen	37,148
Aarau	60,856	Fribourg	32,452
Zürich Flughafen	59,004	Neuchâtel	26,924

<sup>1</sup> Intra-divisional revenues and expenses not eliminated.

<sup>2</sup> Park & Rail was affiliated to Passenger Traffic until 2000.

<sup>3</sup> Without Sihltal Railway SZU.

<sup>4</sup> Without Forchbahn FB.

<sup>5</sup> Without «Regionalverkehr Bern-Solothurn» RBS.

## Environment.

		1999	2000	2001	2002	02-01 ± in %
<b>Energy</b>						
Use of primary energy for train traction	GWh	1,993	2,004	2,057	2,069	0.6
- Share of renewable sources of energy	%	100.0	99.8	96.9	87.2	-10.0
Final use of energy in buildings	GWh/year	300	297	297	297	-
- Share of renewable sources of energy	%	12.3	13.3	13.3	13.3	-
<b>Noise</b>						
Low-noise passenger cars		1,777	2,046	2,219	2,851	28.5
- Share of total fleet	%	42.1	49.6	56.5	73.9	30.8
Noise protection screens	km	19.7	28.7	34.7	51.7	49.0
- Attained share of total FinöV scheme	%	0	3.3	5.5	11.9	116.0
<b>Site contamination commitments</b>						
Presumably contaminated sites listed in the cadastre	Number	-	10	1,325	4,051	205.7
- Cleaned-up sites		-	1	1	5	400.0
<b>Use of environment-sensitive products</b>						
Diesel oil	1,000 l	9,208	8,695	8,130	10,016	23.2
Fuel oil		5,415	3,363	3,882	2,787	-28.2
Lubricants		313	333	335	301	-10.0
- For the maintenance of switches		62	70	69	63	-8.4
- Bio-degradable		55	62	68	60	-11.5
Acids, alkaline solutions, chemicals	t	641	272	263	324	23.3
Detergents		765	657	673	750	11.4
Paints and varnishes		118	63	53	61	15.7
Herbicides		4	4	5	5	-5.3
<b>Waste</b>						
Track spoil (ballast, gravelly sand)	1,000 t	...	653	413	320	-22.5
- Processed and re-used		...	522	253	240	-5.1
Scrap metal		46	50	50	39	-23.1
Fluorescent tubes	Number	87,450	96,560	80,890	113,600	40.4
Burnable waste	t	11,850	12,450	14,070	15,190	8.0
Waste wood		1,625	2,235	7,505	13,277	76.9
Waste oil		380	420	320	312	-2.5
Waste cardboard		1,310	1,350	1,415	1,375	-2.8
Waste paper		3,000	3,680	3,830	4,210	9.9
Glass		160	190	194	189	-2.6
PET		56	65	69	78	13.0
Aluminium tins		25	29	30	32	6.7
Batteries		21	16	13	20	53.8