

Zeitschrift: Archives des sciences et compte rendu des séances de la Société
Herausgeber: Société de Physique et d'Histoire Naturelle de Genève
Band: 41 (1988)
Heft: 2

Artikel: Neue und interessante Milben aus dem Genfer Museum LVI : three new Tarsonemina species from the Antilles (Acari: Tarsonemina)
Autor: Mahunka, S. / Mahunka-Papp, L.
DOI: <https://doi.org/10.5169/seals-740393>

Nutzungsbedingungen

Die ETH-Bibliothek ist die Anbieterin der digitalisierten Zeitschriften auf E-Periodica. Sie besitzt keine Urheberrechte an den Zeitschriften und ist nicht verantwortlich für deren Inhalte. Die Rechte liegen in der Regel bei den Herausgebern beziehungsweise den externen Rechteinhabern. Das Veröffentlichen von Bildern in Print- und Online-Publikationen sowie auf Social Media-Kanälen oder Webseiten ist nur mit vorheriger Genehmigung der Rechteinhaber erlaubt. [Mehr erfahren](#)

Conditions d'utilisation

L'ETH Library est le fournisseur des revues numérisées. Elle ne détient aucun droit d'auteur sur les revues et n'est pas responsable de leur contenu. En règle générale, les droits sont détenus par les éditeurs ou les détenteurs de droits externes. La reproduction d'images dans des publications imprimées ou en ligne ainsi que sur des canaux de médias sociaux ou des sites web n'est autorisée qu'avec l'accord préalable des détenteurs des droits. [En savoir plus](#)

Terms of use

The ETH Library is the provider of the digitised journals. It does not own any copyrights to the journals and is not responsible for their content. The rights usually lie with the publishers or the external rights holders. Publishing images in print and online publications, as well as on social media channels or websites, is only permitted with the prior consent of the rights holders. [Find out more](#)

Download PDF: 23.11.2025

ETH-Bibliothek Zürich, E-Periodica, <https://www.e-periodica.ch>

NEUE UND INTERESSANTE MILBEN
AUS DEM GENFER MUSEUM LVI.
THREE NEW TARSONEMINA SPECIES FROM THE ANTILLES
(ACARI: TARSONEMINA)

BY

S. MAHUNKA * and L. MAHUNKA-PAPP *

With 17 figures

ABSTRACT

New and interesting mites from the Geneva Museum LVI. Three new Tarsonemina species from the Antilles (Acari: Tarsonemina). — The following species are described as new to science: *Bakerdania berndi* sp. n., *Archidispus comteae* sp. n. and *Scutacarus schauenbergi* sp. n.

INTRODUCTION

Some interesting species of Tarsonemina have been found in the material of the Muséum d'Histoire naturelle, Geneva, collected by the staff members Mrs L. Comte and Dr. P. Schauenberg. The description of the new species is given hereunder.

DESCRIPTIONS

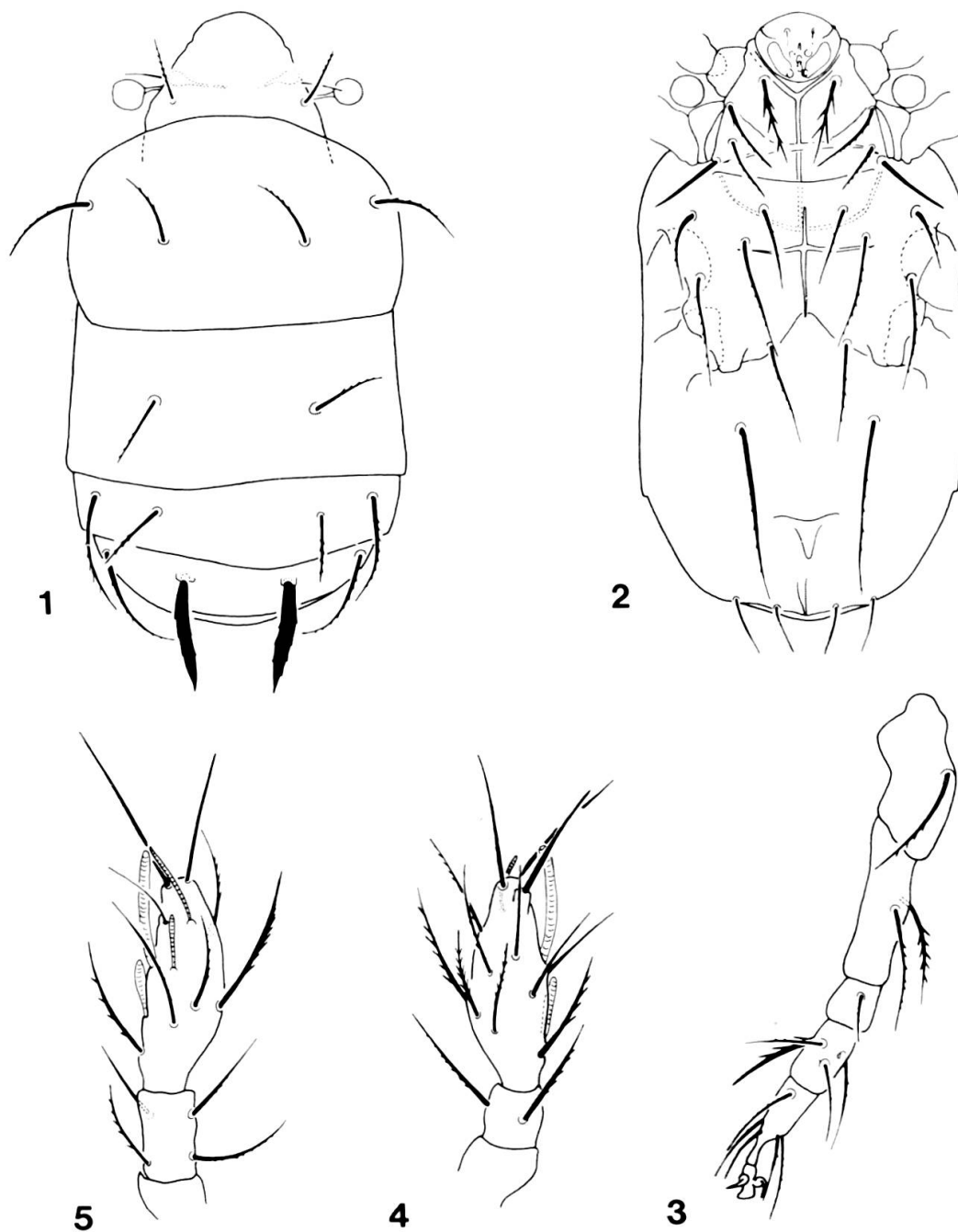
PYGMEPHORIDAE

Bakerdania berndi sp. n.

M e a s u r e m e n t s : Length: 127 μ m, width: 72 μ m.

D o r s a l s i d e (Fig. 1): Prodorsum wide, rounded anteriorly. Peritrema large, opening laterally, originating nearly transversally. Two pairs of prodorsal setae

* Zoological Department, Hungarian Natural History Museum, Baross utca 13, H-1088 Budapest, Hungary.



FIGS 1-5.

Bakerdania berndi sp. n. — 1: dorsal side, 2: ventral side, 3: leg IV, 4: leg I from ventral view, 5: leg I from dorsal view.

nearly equal in length, posterior part slightly thicker and pilose. Sensillus with a round head from dorsal view. Setae of *C* and *D* segments short, c_2 slightly longer than c_1 , d_1 similar to f . Setae e and h_2 longest of all, both curved, setae h_1 strongly thickened, bean-pod-shaped, serrated marginally. Segment *Ps* bearing only two pairs of thin setae, both pairs equal in length.

V e n t r a l s i d e (Fig. 2): Apodemes normally developed, *ap. 2* thin, *ap. 4* reaching only to insertion point of setae *3b*. Apodemes *5* long, but thin, setae *4a* arising along them. Among epimeral setae *1a* and *2b* slightly thicker than the others, *1a* with 2-3 long spiniform cilia, *2b* smooth. All others normally ciliate. Setae *4a* originating far anteriorly from *4b*, later ones reaching to posterior margin of body. All setae finely ciliate.

L e g s: Leg I (Figs 4, 5) without claw, tibiotarsus lanceolate, but stout anteriorly. Among the 4 solenidia ω_2 the largest, ω_1 much longer than ϕ_1 and ϕ_2 . ϕ_1 originating far from ϕ_2 . Legs IV (Fig. 3) comparatively short, femur much longer than tarsus.

M a t e r i a l e x a m i n e d: Holotype: Ant-82/8: Guadeloupe: Grande-Terre: Pointe-des-Châteaux, extrémité est de l'île, zone d'embruns avec *Carex* et buissons de *Cocoloba uvifera* (Raisin-bord-de-mer), 1.II.1982, leg. P. Schauenberg. Holotype: MHNG*.

R e m a r k s: The new species is only provisorily placed in the genus *Bakerdania* Sasa, 1961. The shape of legs IV well differs from the typical one. On the basis of the clawless leg I and the dilated setae h_1 the new species is well distinguishable from all heretofore known related taxa.

We dedicate the new species to our friend Dr. Bernd Hauser, Geneva.

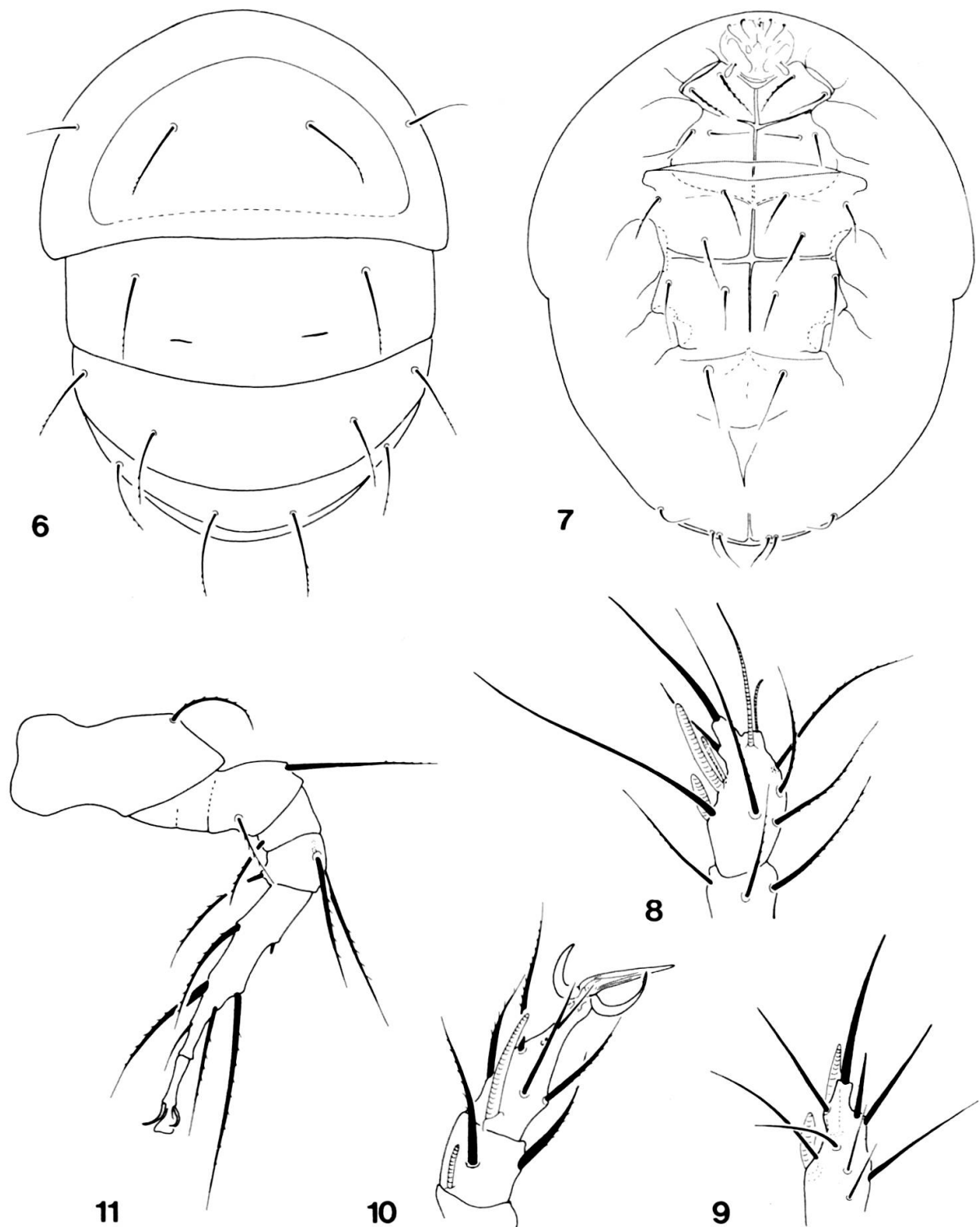
SCUTACARIDAE

Archidispus comteae sp. n.

M e a s u r e m e n t s: Length: 247-253 μm , width: 198-218 μm .

D o r s a l s i d e (Fig. 6): Clypeus and clypeal margin small and thin. All dorsal setae thin, simple, finely ciliate on their outer margin. Setae c_1 slightly longer than c_2 , d_1 , f and h_1 equal in length, setae e and h_2 shorter than their inner pairs. On segment *Ps* three pairs of thin, short setae present, ps_1 slightly longer than ps_2 , ps_3 characteristically curved inwards.

* MHNG = deposited in the Muséum d'Histoire naturelle, Genève.



FIGS 6-11.

Archidispus comteae sp. n. — 6: dorsal side, 7: ventral side, 8: leg I,
9: distal end of tibia of leg I, 10: leg II, 11: leg IV.

Ventral side (Fig. 7): Gnathosoma large, as is solenidium of palpus. Apodemes well developed, thick, *ap. 4* reaching to lateral margin of the posterior epimeral plates. All epimeral setae very thin and simple, also short. Setae *4b* and *4c* slightly longer than the other ones.

Legs: Tibiotarsus of leg I (Figs 8, 9) short, thick, without claw. The chitinous tubercle of setae *d* and *2d*' very large, seta *d* thick, but much shorter than setae *dT*. Solenidium ω_1 long, thin, originating far from ω_2 , arising laterally. ω_2 thick, reaching to anterior end of tibiotarsus. ϕ_1 originating near to ϕ_2 , much longer and much thinner than ϕ_2 . Pulvillus of legs II (Fig. 10) and III long, sharply pointed. Claws long. Leg IV (Fig. 11) with tarsus. Seta *2d*' very short, spiniform, pretarsus also short.

Material examined: Holotype: Guadeloupe (Basse-Terre): Forêt de *Podocarpus* au versant S de la Soufrière, près des Bains Jaunes, 800 m, 29.III.1979, leg. L. Comte; 2 paratypes: from the same sample. Holotype and 1 paratype: MHNG; 1 paratype (866-PT-83): HNHM *.

Remarks: The new species belongs to the "*haarloevi*" — group of the genus *Archidispus* Karafiat, 1959. It is well characterised by the clawless leg I and the simple setae of body. It stands nearest to *Archidispus soosi* Mah., 1967 however, it differs from it and from the other related taxa by the distance of setae *2d*' and *2d*''.

The new species is dedicated to Mrs L. Comte, Dr. Hauser's assistant.

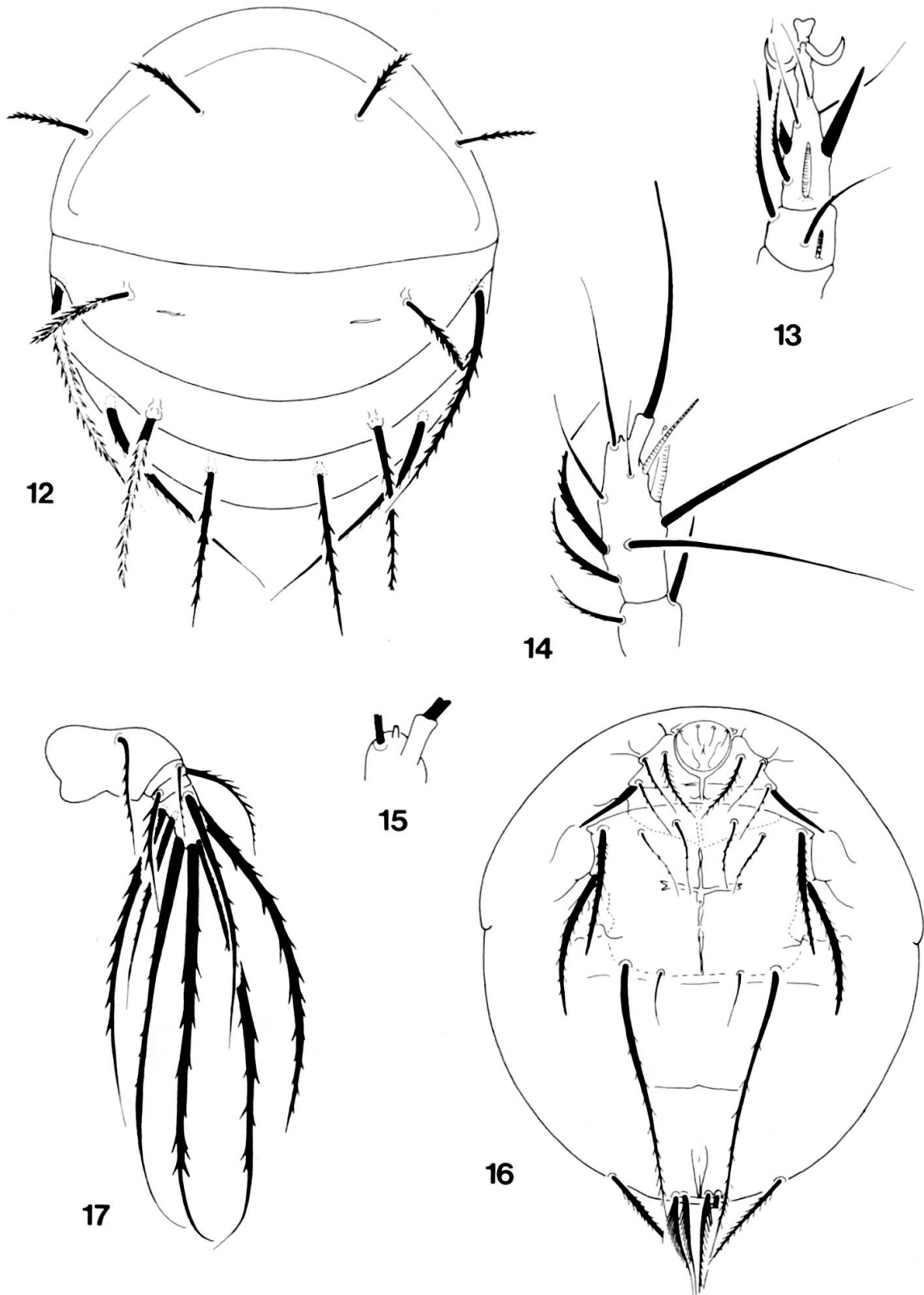
***Scutacarus schauenbergi* sp. n.**

Measurements: Length: 192-204 μm , width: 168-182 μm .

Dorsal side (Fig. 12): Clypeus large, but the clypeal margin thin. Both pairs of clypeal setae short, but strong, they are the shortest setae of the dorsal segments. Setae *d* much shorter than *h*₁ or *f*, setae *e* and *h*₂ nearly equal in length. Among *ps*-setae, *ps*₁ and *ps*₂ dilated basally, *ps*₃ thin but much longer than *ps*₂.

Ventral side (Fig. 16): Apodemes thick, *ap. sp.* with irregular thickenings. *Ap. 4.* short, originating nearly transversally. Epimeral setae different in length and shape, setae *1b*, *2a*, *3a*, *3b* and *4a* thin, short, normally ciliate; *1a* with long cilia, *2b* smooth, spiniform. Setae *3c* and *4c* sword-shaped, strongly dilated, but with normal cilia. Setae *4b* very long, extending beyond posterior margin of body.

* HNHM = deposited in the Hungarian Natural History Museum, Budapest, with identification number of the species in the Collection of Arachnida.



FIGS 12-17.

Scutacarus schauenbergi sp. n. — 12: dorsal side, 13: leg II, 14: leg I,
15: distal end of tibia of leg I, 16: ventral side, 17: leg IV.

L e g s : Tibiotarsus of leg I (Figs 14, 15) without claw, a short peduncle visible. Chitinous tubercle of seta *d* long. The ω_1 solenidium longer than the chitinous tubercle. Tarsus of legs II (Fig. 13) and III with simple claws and with modified $2d_1'$ seta. All setae of leg IV (Fig. 17) long, with strong, spiniform cilia.

M a t e r i a l e x a m i n e d : Holotype: Ant-82/2: Guadeloupe: Côte ouest de Basse-Terre: Rocroy. Région sèche. Végétation xérophile, buissons épineux avec cactées (*Cereus*) et crassulacées. Sous une grosse pierre, alt. env. 100 m, 31.I.1982, leg. P. Schauenberg; 6 paratypes: from the same sample. Holotype and 4 paratypes: MHNG and 2 paratypes (867-PT-83): HNHM.

R e m a r k s : The new species is well characterizable by the clawless leg I, the strong setae of body and the unequal setae of the epimeral region. By the characteristic combination of these features the new species differs from all its congeners.

The new species is dedicated to Dr. P. Schauenberg, the collector of this interesting material.

REFERENCES

- MAHUNKA, S. 1967. Contributions to the Tarsonemini Fauna of Hungary. IV. (Acari, Trombidiformes). *Annls hist.-nat. Mus. natn. hung.* 59: 394-397.
- RACK, G. 1973. *Archidispus pterostichi* sp. n. und die Gattung *Archidispus* Karafiat, 1959 (Acarina, Trombidiformes, Scutacaridae). *Ent. Mitt. zool. Mus. Hamburg* 4: 319-326.

