

**Zeitschrift:** Archives des sciences et compte rendu des séances de la Société  
**Herausgeber:** Société de Physique et d'Histoire Naturelle de Genève  
**Band:** 34 (1981)  
  
**Artikel:** Geology of the area north of Yozgat (north central Turkey)  
**Autor:** Berent, Raman I.  
**DOI:** <https://doi.org/10.5169/seals-740060>

### **Nutzungsbedingungen**

Die ETH-Bibliothek ist die Anbieterin der digitalisierten Zeitschriften auf E-Periodica. Sie besitzt keine Urheberrechte an den Zeitschriften und ist nicht verantwortlich für deren Inhalte. Die Rechte liegen in der Regel bei den Herausgebern beziehungsweise den externen Rechteinhabern. Das Veröffentlichen von Bildern in Print- und Online-Publikationen sowie auf Social Media-Kanälen oder Webseiten ist nur mit vorheriger Genehmigung der Rechteinhaber erlaubt. [Mehr erfahren](#)

### **Conditions d'utilisation**

L'ETH Library est le fournisseur des revues numérisées. Elle ne détient aucun droit d'auteur sur les revues et n'est pas responsable de leur contenu. En règle générale, les droits sont détenus par les éditeurs ou les détenteurs de droits externes. La reproduction d'images dans des publications imprimées ou en ligne ainsi que sur des canaux de médias sociaux ou des sites web n'est autorisée qu'avec l'accord préalable des détenteurs des droits. [En savoir plus](#)

### **Terms of use**

The ETH Library is the provider of the digitised journals. It does not own any copyrights to the journals and is not responsible for their content. The rights usually lie with the publishers or the external rights holders. Publishing images in print and online publications, as well as on social media channels or websites, is only permitted with the prior consent of the rights holders. [Find out more](#)

**Download PDF:** 18.01.2026

**ETH-Bibliothek Zürich, E-Periodica, <https://www.e-periodica.ch>**

# GEOLOGY OF THE AREA NORTH OF YOZGAT (NORTH CENTRAL TURKEY)

BY

**Raman I. BERENT**<sup>1</sup>

---

## RÉSUMÉ

Des sédiments Crétacés et Tertiaires, ainsi que du mélange ophiolitique et des roches volcaniques plus jeunes affleurent au N de Yozgat. Des études micropaléontologiques, à l'aide surtout des Foraminifères planctiques furent nécessaires afin de donner un âge aux roches sédimentaires. La configuration tectonique actuelle est due principalement à des mouvements relativement jeunes.

## ABSTRACT

Cretaceous and Tertiary sediments, ophiolitic mélange and younger volcanics outcrop N of Yozgat. Micropaleontological studies, with the help mostly of planktonic Foraminifera, were useful in order to give ages to the sedimentary rocks. The present tectonic setting is due mainly to fairly young movements.

## INTRODUCTION

BAILEY and McCALLIEN (1950, 1953) were the first to study in detail the ophiolitic mélange in this area, and named it the "Ankara Mélange". The surroundings of Yozgat were mapped by KETIN (1955) on a 1:100 000 scale. His report was further developed in the Explanatory Text of the Geological Map of Turkey, Kayseri Sheet (KETIN 1963).

## DESCRIPTION OF THE UNITS

### A. THE OPHIOLITIC MÉLANGE

The ophiolitic mélange is defined as an olistostromal and tectonic mixture of ophiolitic material and sediments of oceanic origin with exotic blocks (GANSSE, 1974). It consists in this area of serpentinites, pillow basalts, diabase dykes, radiolarites, exotic limestone blocks and beds of pink silty limestone.

---

<sup>1</sup> Section des Sciences de la Terre, Université de Genève, 13, rue des Maraichers, 1211 Genève 4.

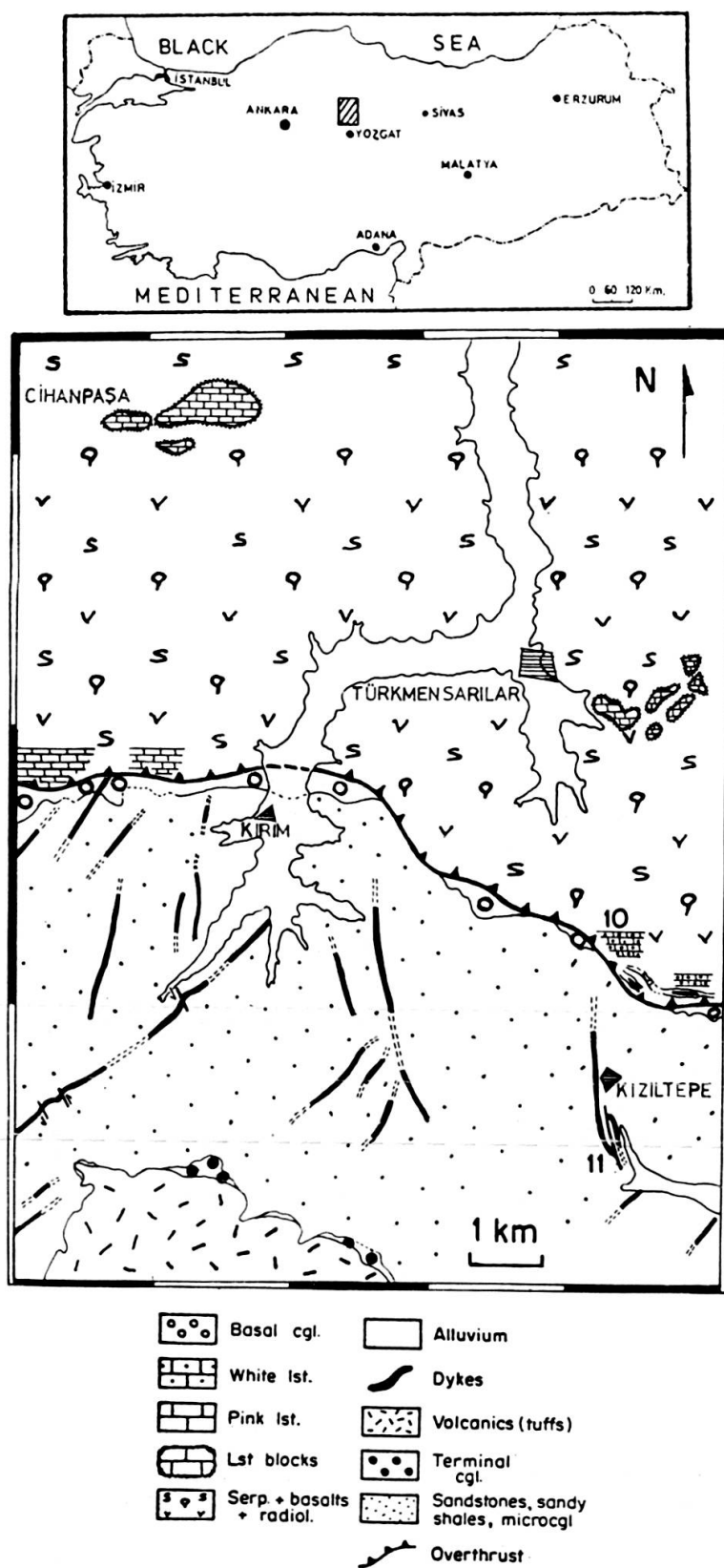
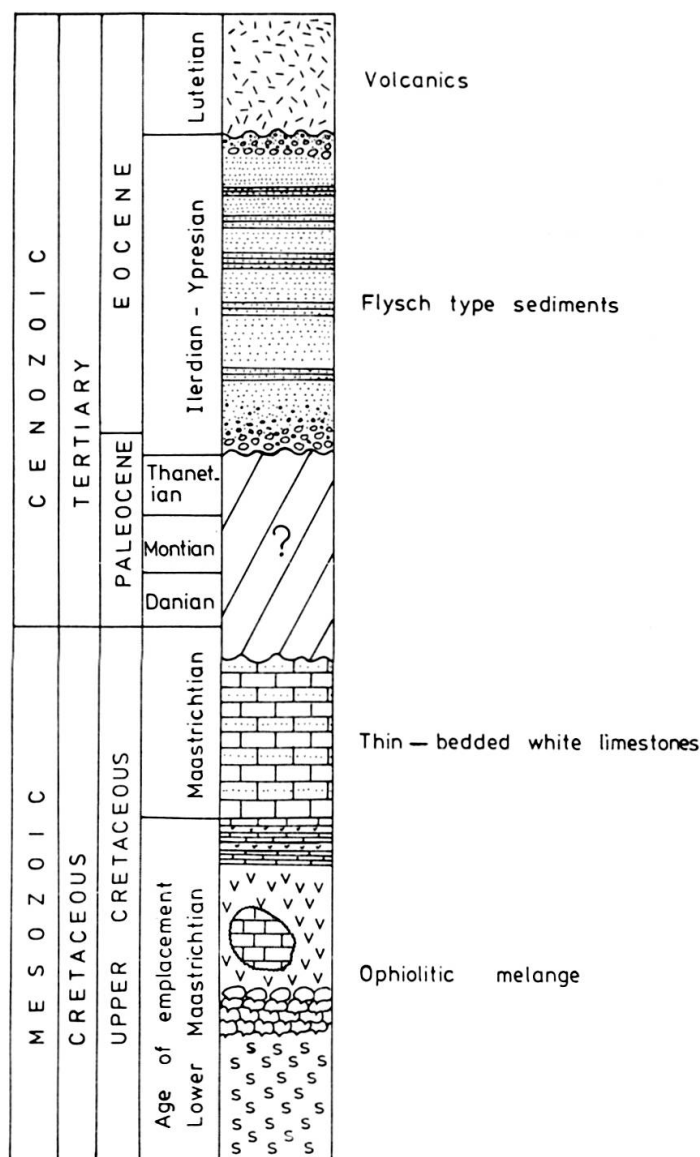


FIG. 1.—Index map and geologic map of the area of study (Yozgat i33-b1 sheet)

FIG. 2.—Synthetic stratigraphic section of the area of study (not to scale).



Good outcrops of serpentinite, pillow basalt and radiolarite exist along the road between Kirim and Cihanpaşa.

The limestone blocks, milky white in colour, can be particularly well observed at Cihanpaşa and W of Türkmensarılar. Limestone samples (collected mainly W of Türkmensarılar) are of grainstone type, and contain ooids. This suggests that they were formed in a shallow subtidal environment. They contain the following microfossils:

*Protopenneroplis trochoangulata* SEPTFONTAINE

*Lithocodium aggregatum* ELLIOTT

*Bacinella irregularis* RADOICIC

*Dasycladaceae*

This association indicates a Berriasian age.

The pink silty limestones are very well exposed along the overthrust line W of Kirim and on a ridge N of Kiziltepe. The pink limestone samples are the youngest sediments found in the ophiolitic mélange. N of Kiziltepe, relics of pink limestone are observed inside vesicular pillow basalts; this illustrates the environment into which the pillow basalts were erupted. The pink silty limestones are of mudstone type, and were probably formed in a pelagic environment. They contain:

*Globotruncana lapparenti* BOLLI  
*Globotruncana bulloides* VOGLER  
*Globotruncana arca* CUSHMAN  
*Hedbergella* spp.  
*Heterohelix* spp.  
*Nodosaria* spp.  
*Lenticulina* spp.

This assemblage indicates an Upper Campanian-Lower Maastrichtian age.

#### B. THE THIN-BEDDED WHITE LIMESTONES

They consist of an alternation of thin beds of silty (average thickness approx. 50 cm) and sandy limestone (20 cm). They are exposed along the overthrust line and as a result of thrusting, they are intermingled with the pink limestones. The white sandy limestones show graded-bedding and contain chips of ophiolitic mélange material indicating that their deposition post-dates the ophiolitic mélange. In addition to mélange fragments, the sandy limestones also contain intraclasts of white silty limestone (which is of mudstone type). A stratigraphic normal section was measured N of Kiziltepe where a tectonic lens (Fig. 3, No. 10 on map of Fig. 1) of thin-bedded white limestones dips steeply to the N. The following microfauna was found in the sandy limestones:

*Globotruncana bulloides* VOGLER  
*Globotruncana* aff. *contusa* (CUSHMAN)  
*Globotruncana fornicata* PLUMMER  
*Globotruncana* aff. *gansseri* BOLLI  
*Globotruncana lapparenti* BOLLI  
*Globotruncana stuartiformis* DALBIEZ  
*Globotruncana stuarti* (DE LAPPARENT)

Owing to the detritic nature of the white sandy limestones, these microfossils are possibly reworked into the sediment, and hence their stratigraphic value is limited.

The white silty limestones contain:

*Globotruncana arca* (CUSHMAN)  
*Globotruncana contusa* (CUSHMAN)  
*Globotruncana fornicata* PLUMMER  
*Globotruncana ganebini* TILEV  
*Globotruncana gansseri* BOLLI  
*Globotruncana lapparenti* BOLLI  
*Globotruncana stuartiformis* DALBIEZ  
*Globotruncana stuarti* (DE LAPPARENT)  
*Praeglobotruncana citae* (BOLLI)  
*Rugoglobigerina rotundata* BRÖNNIMANN  
*Rugoglobigerina* spp.  
*Planoglobulina acervulinoides* EGGER  
*Heterohelix* spp.  
*Heterohelix globulosa* EHRENBERG  
*Pseudotextularia elegans* RZEHAKE  
*Nodosaria* spp.

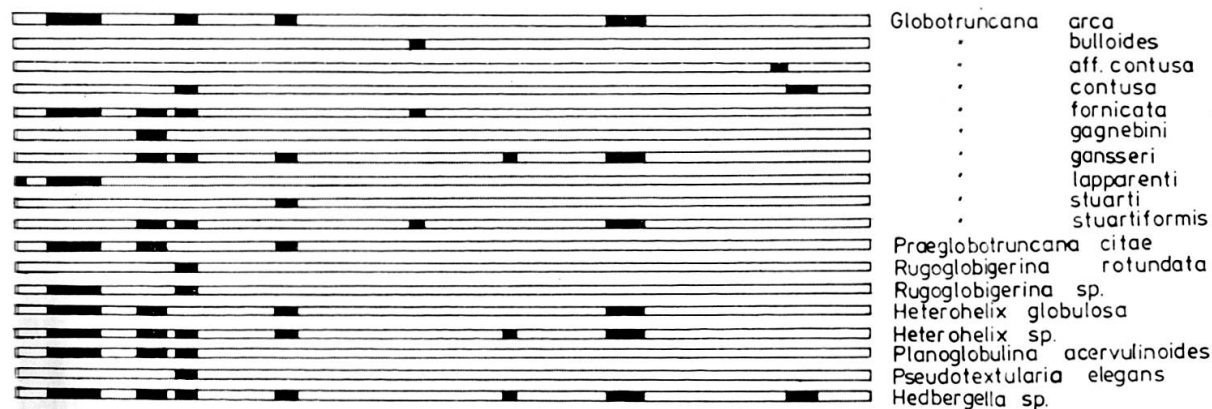
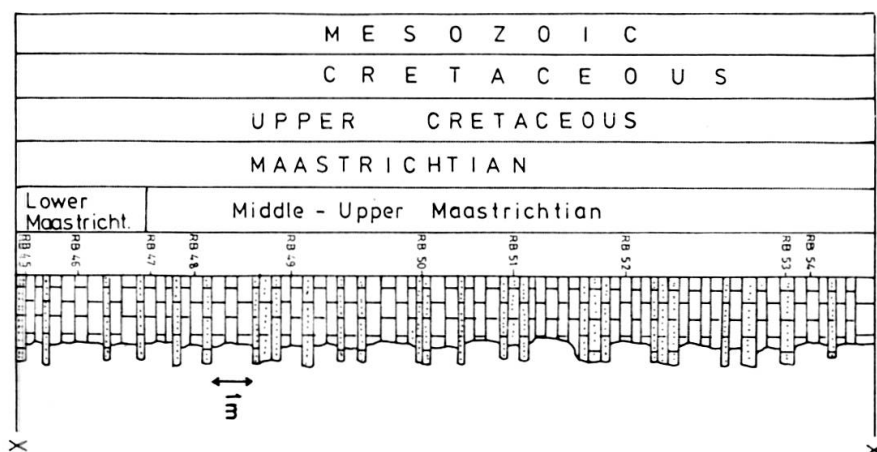


FIG. 3.—Stratigraphic section measured in the thin-bedded white limestones.

The microfauna available in the white silty limestones can be considered as giving a definitive age for this sequence. Based on the microfaunal evidence from the silty limestones in this stratigraphic section (Fig. 3), deposition began in Lower Maastrichtian times and continued till Middle or perhaps even Upper Maastrichtian; however *Globotruncana mayaroensis* was not found.

The features described in the above paragraphs suggest that the sequence of thin-bedded limestones is of turbiditic nature.

### C. THE FLYSCH TYPE SEDIMENTS

They begin with a basal conglomerate, 50 to 200 m thick (KETIN, 1955; 1963).

This conglomerate is well exposed around the village of Kirim and at various places along the overthrust line. It consists of cobbles and small boulders.

The basal conglomerate is followed by monotonous layers of microconglomerate, carbonate cemented sandstone and sandy shales, 1,000 to 1,200 m thick (KETIN, 1955). Vertical and lateral changes may occur between microconglomerate, sandstone and sandy shale. Graded bedding is observed in the microconglomerates. The sandstones contain much ophiolitic *mélange* material and therefore may be classed as greywackes. The flysch type sediments are generally grey-green, sometimes brownish due to weathering. These layers show much parasitic folding and bedding plane slip.

The microconglomerates, sandstones and sandy shales are overlain by a terminal conglomerate 10 to 15 m thick (KETIN, 1955).

These clastic flysch sediments dip towards the N. They are overturned to the S into a recumbent syncline as a result of the overthrust of the *mélange* and the thin-bedded white limestones (Fig. 4).

The flysch type sediments proved to be poor in fossils. A few undetermined *Nummulites* were found along with a single specimen of *Assilina pustulosa* DONCIEUX. Sandy shales provided a few *Anomaliniidae* which appear reworked. Some vegetal imprints were also observed. The above fossils indicate a Lower Eocene age. An Ilerdian-Ypresian interval may be defined on the basis of the occurrence of *Assilina pustulosa*, but owing to the possibility of reworking, it should be noted that these sediments could be younger. K/Ar dates (see below) of diabase dykes cutting the flysch type sediments indicate that these sediments are Lutetian or older.

### D. THE VOLCANICS

They are of two types: basaltic and andesitic tuffs and agglomerates, and diabase dykes which cut the flysch type sediments.

The age of volcanic activity was shown to be Lutetian by KETIN (1955, 1963; 1966). This was confirmed by K/Ar measurements carried out at the Depart-





1



2



3



4



5



6



---

PLATE 1

1. *Protopeneroplis trochoangulata* SEPTFONTAINE  
approx.  $\times 45$
2. *Lithocodium aggregatum* ELLIOTT  
approx.  $\times 30$
3. *Globotruncana lapparenti* BOLLI  
approx.  $\times 120$
4. *Globotruncana stuarti* (DE LAPPARENT)  
approx.  $\times 45$
5. *Globotruncana bulloides* VOGLER  
approx.  $\times 45$
6. *Globotruncana* aff. *contusa* (CUSHMAN)  
approx.  $\times 110$

Photos 3 to 6 are from samples from the white sandy limestones.

ment of Mineralogy of the University of Geneva, which gave the following results:

Sample (WR)	%K	$^{40}\text{Ar}_{\text{RAD}}\text{nl/g}$	% $^{40}\text{Ar}_{\text{RAD}}$	Age ( $\pm 2$ S.D) M.y.
1. RB 41	1.824	3.135	65.0	$44 \pm 6$
2. RB 71	1.342	2.272	44.9	$43 \pm 8$

Average age =  $43 \pm 5$  M.y.

Analyst: H. A. F. De Souza.

1. RB 41: SE of Kirim, SSE-NNW trending dyke cutting the flysch type sediments. Olivine basalt with intergranular and trachytic texture. Quite fresh.
2. RB 71: S of Kirim, basalt with large Augite phenocrysts. Basalt was found within the tuffs. Quench texture due to fast cooling.

The tuffs are white to dark yellow, occasionally light purple. They are highly altered, and lie unconformably over the flysch type sediments. Two dominant directions are observed for the dykes cutting the flysch sediments, namely SW-NE and SSE-NNW. No intersection between these two directions was found and their relative ages are unknown. These dykes can often be followed over long distances as they form most of the ridges and hilltops in this area.

## TECTONIC OBSERVATIONS

A N-S overthrust of Late Oligocene or Miocene age (ARIKAN, 1976) pushes the ophiolitic *mélange* and the thin-bedded white limestones over the flysch type sediments. The thrust rocks locally cover the flysch basal conglomerate.

The axis of folds in the flysch type sediments is mainly E-W, with variations to NW-SE and NE-SW.

## CONCLUSIONS

Mesozoic and Tertiary tectonic evolution in this area of Turkey was complicated because of continental collision and subsequent deformation. Detailed sedimentological and paleontological studies are the only way to improve our understanding of this tectonic evolution. Micropaleontological observations provided information concerning the stratigraphic position (Upper Cretaceous and Tertiary) of the sediments outcropping in this area. The structures currently observed in the field are the result of Tertiary movements. The Lutetian sediments shown by KETIN

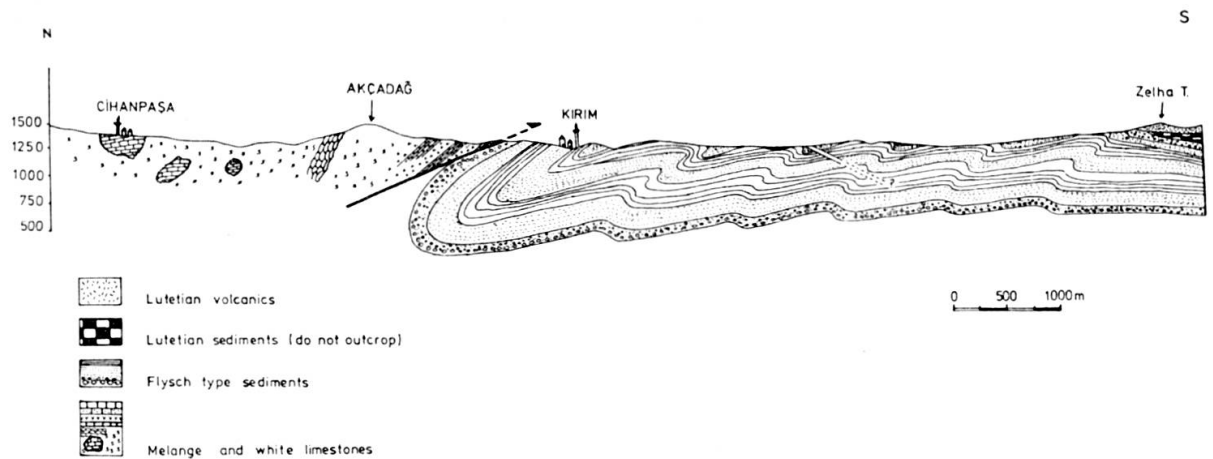


FIG. 4.—N-S cross-section through the area of study.

(1955) on his 1:100,000 scale geologic map are absent in our area of study. This area is not very promising for oil exploration unless substructures are revealed by drilling.

#### ACKNOWLEDGMENTS

Many thanks to Professor P. Brönnimann and to Professor L. Zaninetti for reading the manuscript of this paper. I am also indebted to all my colleagues at the University of Geneva and at the Mineral Research and Exploration Institute of Turkey in Ankara (MTA) for their advice and suggestions in various domains.

#### REFERENCES

- ARIKAN, Y. (1976). The Geology and Petroleum Prospects of the Tuz Gölü Basin. *MTA Bulletin*, 85, 17-36.
- BAILEY, E. B. and W. J. MCCALLIEN (1950). The Ankara Mélange and the Anatolian Thrust. *Nature*, 166, 938-943, and *MTA Bulletin*, 40, 17-22.
- (1953). Serpentine Lavas, the Ankara Mélange and the Anatolian Thrust. *Trans. Roy. Soc. Edinburgh*, 62/2, 403-442.
- GANSSE, A. (1974). The Ophiolitic Mélange, a World-wide Problem on Tethyan Examples. *Eclogae Geol. Helv.* 67/3, 479-507.
- KETIN, I. (1955). Yozgat Bölgesinin Jeolojisi ve Orta Anadolu Bölgesinin Tektonik Durumu. *Bull. Geol. Soc. Turkey*, 6/1, 1-28.
- editor (1963). Explanatory Text of the Geological Map of Turkey (Kayseri Sheet). *MTA Publ.*, 1-28.
- (1966). Tectonic Units of Anatolia (Asia Minor), *MTA Bull.*, 66, 23-34.