

# Operational support services

Objekttyp: **Group**

Zeitschrift: **Annual report / International Committee of the Red Cross**

Band (Jahr): **- (1995)**

PDF erstellt am: **28.04.2024**

## **Nutzungsbedingungen**

Die ETH-Bibliothek ist Anbieterin der digitalisierten Zeitschriften. Sie besitzt keine Urheberrechte an den Inhalten der Zeitschriften. Die Rechte liegen in der Regel bei den Herausgebern.

Die auf der Plattform e-periodica veröffentlichten Dokumente stehen für nicht-kommerzielle Zwecke in Lehre und Forschung sowie für die private Nutzung frei zur Verfügung. Einzelne Dateien oder Ausdrucke aus diesem Angebot können zusammen mit diesen Nutzungsbedingungen und den korrekten Herkunftsbezeichnungen weitergegeben werden.

Das Veröffentlichen von Bildern in Print- und Online-Publikationen ist nur mit vorheriger Genehmigung der Rechteinhaber erlaubt. Die systematische Speicherung von Teilen des elektronischen Angebots auf anderen Servern bedarf ebenfalls des schriftlichen Einverständnisses der Rechteinhaber.

## **Haftungsausschluss**

Alle Angaben erfolgen ohne Gewähr für Vollständigkeit oder Richtigkeit. Es wird keine Haftung übernommen für Schäden durch die Verwendung von Informationen aus diesem Online-Angebot oder durch das Fehlen von Informationen. Dies gilt auch für Inhalte Dritter, die über dieses Angebot zugänglich sind.

# OPERATIONAL SUPPORT SERVICES

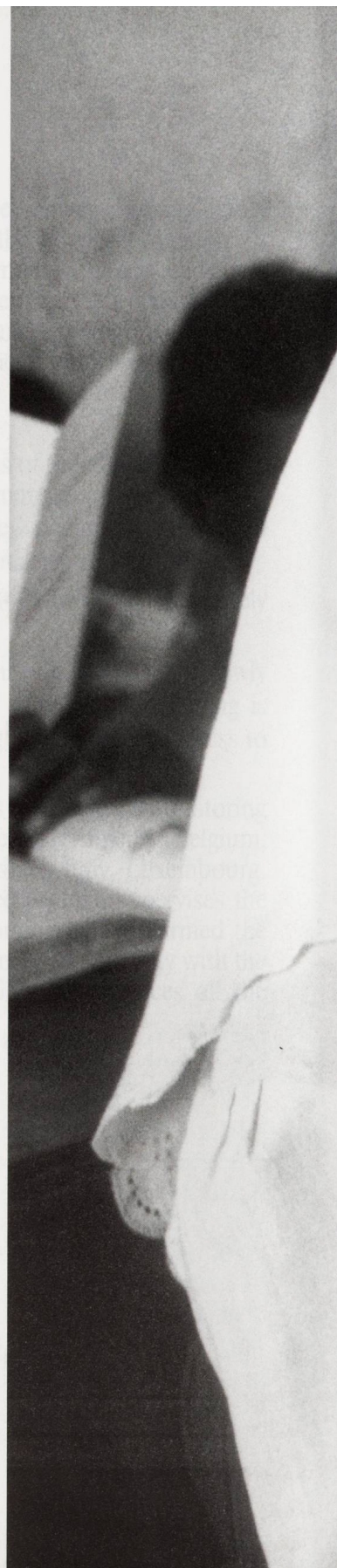
## *Data classification*

Activities conducted under the other three mandates – to gather, classify and preserve information, can be summarised as follows:

- 336 services (245 in 1994) supplied the ITS with names of individuals who needed certificates established as a result of persecution;
- the ITS acquired 555 linear metres of documents relating to former civilian victims of persecution;
- 768,333 reference files (469,527 in 1994) were set up for classified documents. This huge increase was due to the fact that classification is now done almost exclusively on computer, allowing for the processing of newly registered individual data.

The International Commission of the ITS, which is a permanent body and is composed of representatives of the member States – the Federal Republic of Germany, France, Greece, Italy, the Netherlands, the United Kingdom and the United States – work some in Arolsen. At its annual meeting the Commission agreed to strengthen the "streamlined processing" system of the ITS. In 1995, the Federal Republic of Germany agreed to conduct activities conducted by the ITS under its mandate.

In 1995 the ICRC called for a total ban on landmines in a bid to put an end to the unacceptable and indiscriminate suffering they inflict. At the same time it launched a number of programmes to heighten awareness of such dangers and help potential victims avoid them. Widescale and concerted action of this kind, such as here in Yemen, requires the full participation of ICRC delegations throughout the world and strong initiative and backing from headquarters.







# خطرا إندروا قرآلة الحرب

بأمكنك ان ترى  
أتر قدم أحد الاشخاص  
سائرا في اتجاه  
اللفم المزروع تحت  
الارض دون ان يراه . . ثم  
يقع قدمه عليه و  
تفجر هذا اللفم و  
يد هذا الشخص  
البينى . . و ينزف  
دما كثيرا ثم  
يلى رجله  
الباقية له  
مساعدة .



*The role of ICRC headquarters in Geneva is to enable field staff to respond as effectively as possible to the humanitarian needs of ever-growing numbers of victims of armed conflicts. The distress brought about by lack of respect for the most elementary rights of the individual and the tragedy marking the daily lives of people affected by wanton armed violence necessitate a steadily rising capacity for humanitarian action. The efficient organization of field operations not only calls for the consolidation of existing mechanisms, but also requires the ICRC to deal with the constant challenge of finding evermore effective communication, planning and management tools.*

*In 1995 considerable efforts were devoted, on the one hand, to improving communications systems both within headquarters and between headquarters and the field, with its increasingly diverse needs, and, on the other, to making optimum use of state-of-the-art information technology so as to promote communication with the public via the World Wide Web on the Internet. These efforts were accompanied by a drive to strengthen management control systems and establish recognized quality standards for humanitarian work.*

*In order to enhance its relations with the media, the ICRC further implemented the policy to decentralize its information services by setting up units in its field delegations, while taking care to maintain the consistency of its humanitarian message.*

*During the year under review, the ICRC launched a worldwide campaign to ban anti-personnel mines, which provided a new platform for communication with the general public. The campaign, conducted in cooperation with the National Red Cross and Red Crescent Societies and their International Federation, highlights the ethical motivation that led the ICRC to initiate this move and represents a logical extension of the institution's mandate to prevent suffering caused by the indiscriminate and particularly cruel effects of certain weapons and to mobilize public opinion to that end.*

*A noteworthy development in the ICRC's staff policy was the growing trend to recruit non-Swiss personnel for field operations. This means that more and more teams are now made up of multinational staff.*



## COMMUNICATION AND EXTERNAL RESOURCES

"Landmines must be stopped": drawing attention to the devastating effects of anti-personnel landmines dominated all the ICRC's communication efforts in 1995. In the run-up to the Review Conference of the 1980 United Nations Convention on Certain Conventional Weapons, held in Vienna in September, the ICRC used this unequivocal message to launch a large-scale campaign involving the whole institution both at headquarters and in the field. National Societies, and in particular those of Austria, Denmark, France, New Zealand and South Africa, took an active part in relaying the message within their own countries, thus enhancing the impact of the ICRC's efforts to enlist the support of politicians, armed forces and other decision-makers and helping the institution to promote public awareness of the landmine scourge. The campaign will continue well into 1996 and more and more National Societies have pledged to join in, for although the Review Conference yielded some encouraging results, such as the adoption of a new Protocol on blinding weapons, little tangible progress was made on the landmine issue itself.<sup>1</sup>

In the course of the year the ICRC produced and distributed a number of films, such as *An ordinary day* and *Weapons: a battle for humanity*, a coproduction with Anglia Television; these highlight not only the tragic consequences of the indiscriminate use of landmines and the wanton carnage they cause, but also the ICRC's efforts to treat and rehabilitate mine victims and the work done by other organizations involved in mine-clearance operations. Hard-hitting slogans were devised and printed as posters, and free space was given to them in major newspapers. The *International Review of the Red Cross* published leading articles and special issues on the subject. The ICRC's policy to decentralize its information services proved its worth and delegations the world over participated in the campaign by organizing press conferences and seminars and assisting reporting teams in the field that were eager to contribute to the banning of landmines. Information units in the field now cater to the needs of local and regional readers, listeners and viewers in 19 countries. Awareness-raising programmes for people exposed to the risk of landmine injury also form part of the ICRC's campaign. In Mozambique, for instance, theatre groups travel from one village to another, enacting lively sketches to warn children and adults of the dangers surrounding them in mine-infested areas and advise them on how best to deal with them.

---

<sup>1</sup> See *The law and legal considerations*, pp. 268-271.

The 26th International Conference of the Red Cross and Red Crescent, held in Geneva in December, was also high on the ICRC's communication agenda for the year. Besides headquarters, field delegations and National Societies were involved in relaying information both in the run-up to and during the actual event: posters, brochures and press kits were sent out to the delegations and National Societies and close contact was maintained with them throughout the year. Press conferences were held in Geneva both in preparation for and at the end of the Conference. Daily reports were sent out in English, French and Spanish and put on the Internet. With the help of the German Red Cross, an experimental on-line computer link was set up during the Conference to enable people all over the world, as well as National Societies and journalists, to have direct access to the Conference and ask questions about the issues involved. A slide show, entitled *The way things are*, was produced jointly with the Federation for the inauguration ceremony, and exhibits were set up at the conference centre where the proceedings took place.

### Films, broadcasts and other audiovisual materials

Besides films on the landmine issue, the ICRC produced *Lifelines*, showing the institution's efforts to restore and maintain family links in war-torn former Yugoslavia. As in previous years, ICRC teams shot newsreel footage and arrangements were made for coproductions and logistic support for TV and independent teams reporting on events in theatres of ICRC operations. The Red Cross Broadcasting Service (RCBS) increased its cooperation with leading international radio stations during the year. Coproduced programmes on activities in the former Yugoslavia, Rwanda, Burundi, Angola, Sudan and Sri Lanka reached millions of listeners. RCBS also changed its programme schedule. After nearly 30 years of monthly broadcasts, it switched to shorter, weekly programmes via Swiss Radio International (SRI) in English, French, German and Spanish, while SRI continued to produce monthly programmes about the ICRC in six languages. In September the institution joined the fast expanding World Wide Web (<http://www.icrc.org>), introducing a vast number of publications, including its *Annual Report*, and keeping users up to date with ICRC activities throughout the world with press releases and other "hot news", especially during the International Conference. As in previous years, demand for photos and audiovisual materials increased.

### Exhibitions

The ICRC and the Federation sponsored an exhibition shown at the International Red Cross and Red Crescent Museum in Geneva to mark the 26th International Conference. The exhibition, entitled *The humanitarian*



*endeavour from Solferino (1859) to Sarajevo (1995)*, illustrated the history of the Movement through postage stamps and offered visitors the use of interactive computer programmes.

In the course of the year the ICRC also took part in international book fairs held in Geneva and in Damascus.

## Publications

Drawing on its vast photographic archives that record more than a century of efforts to help victims of war, the ICRC contributed to the publication of *Focus on humanity*, a 140-page album brought out by the Skira publishing house in Geneva, which contains a selection of photographs and texts reflecting both the continuity and the evolution of the ICRC's work. The institution also continued to publish the *International Review of the Red Cross*, which is its official periodical for opinion and reflection on the mission of the International Red Cross and Red Crescent Movement, as well as the *Red Cross, Red Crescent* magazine, the *Annual Report*, donor-targeted documents and brochures for the general public on conflicts in countries such as Bosnia-Herzegovina, Rwanda and Yemen. The brochure *Women and war*, for instance, was prepared in connection with the World Conference on Women in Beijing in September, while *Civilians in war* was written for the 26th International Conference; *Law of war: prepared for action* specifically targeted the armed forces and was published in seven languages.

The ICRC's decentralization policy means that a number of major publications are produced and printed by regional delegations, for example in Cairo. A new focal point at headquarters offers technical support for all field publications.

## Fundraising

Raising the funds that the ICRC constantly needs to assist victims of conflict is no small challenge in a world where numerous other humanitarian organizations are also seeking resources. The institution has accordingly improved its donor reporting system (mainly for governments and National Societies) and is adapting its appeals and fundraising efforts to meet the demand for ever-more detailed feedback. Donors' wishes to finance specific projects must also be taken into consideration, although this is far from ideal for the ICRC, which badly needs non-earmarked funds to respond to urgent and unforeseen requirements, meet the needs of victims of forgotten conflicts and pursue its efforts to raise awareness of international humanitarian law. As a result of increased cooperation within the Movement, a number of ICRC projects have been delegated to participating National Societies and bilateral

- IN 1995, ON AVERAGE,  
THE ICRC HAD
- 1000 agreements, including 100 co-ordinated by National Societies
  - 7,000 fund-raising appeals under ICRC control
  - 500,000 working in 100 countries

agreements reached to enable National Society-financed initiatives to be carried out under ICRC supervision. In all, some 50 such projects were launched or under negotiation by the end of 1995, most of them aimed at assisting victims of the conflict in the former Yugoslavia. A number of projects were already running in Israel, the occupied territories and the autonomous territories, Afghanistan and Rwanda. By mid-year the ICRC's financial shortfall was such that efforts both at headquarters and in the field had to be stepped up to obtain further contributions from the donor community in order to meet pressing needs in the field. In September the ICRC launched an *Urgent Renewed Appeal* to the international community and a special coordinated effort was made to find sufficient support for its operations in the former Yugoslavia, which were badly underfunded.

Encouraging private donors to contribute to the financing of ICRC activities is another steadily increasing component of the institution's fundraising work. For the first time, the ICRC launched a joint campaign with the Swiss Red Cross on the theme of *Forgotten conflicts*, which raised over a million Swiss francs. The trend to coordinate its private fundraising efforts with those of National Societies was further illustrated by the production of a TV spot to help finance Red Cross aid programmes in the former Yugoslavia. The ICRC's participation as official beneficiary in the World Corporate Games, an international sporting event that brought 380 companies from around the world to compete in Geneva, provided an opportunity to promote knowledge of the institution among the business community. In addition, half a million Swiss francs were raised to fund ICRC activities for the rehabilitation of the war-disabled in Afghanistan, thanks to an auction sale of Pomellato designer jewellery in Paris.



## HUMAN RESOURCES

The Fundamental Red Cross/Red Crescent Principles — which the ICRC shares with the other components of the Movement — guarantee the neutrality, independence and impartiality of the people working under institution's emblem. Whatever their nationality, ICRC employees, both local and expatriate, are seen as belonging to the organization and adhering to its values. Personnel hired in the field — some 7,000 in 1995 — form the cornerstone of all operations, working closely with the institution's expatriate staff. National Society personnel also play an essential role in the ICRC's delegations. In 1995, a total of 538 people were seconded by 22 National Societies. While most of them worked on fixed-term contracts, others were sent out on *ad hoc* missions to meet unforeseen emergency needs. Over the year, this represented an average of 185 posts.

In the past, non-Swiss nationals were engaged primarily in relief and medical activities. Then in 1992 the ICRC decided to open up all staff positions to other nationalities. Today, more and more personnel from different countries are assuming new roles, including that of head of delegation. To promote this transition, staff sponsored by National Societies are now being recruited to work as ICRC delegates and carry out all the traditional tasks, such as helping to re-establish family links, visiting prisoners of war and political detainees, organizing assistance and raising awareness of the Red Cross/Red Crescent principles and international humanitarian law.

In an effort continuously to improve personnel management, the Human Resources Department has been reorganized to ensure a more effective implementation of new initiatives. For example, each individual's career within the ICRC is now monitored much more closely, with a focus on optimal integration of people joining the institution.

In 1995, the ICRC hired 293 new staff, including 274 for the field (94 delegates, 22 administrators, 5 administrative/senior secretaries, 31 secretaries, 26 interpreters, 17 doctors, 21 paramedical specialists and 58 technicians). Extensive in-house training courses are held for newly hired personnel so that they can quickly assume their responsibilities in the field or at headquarters. A standard basic course is provided for those who need to learn about the institution and how it functions. Further training is offered to established staff in the fields of tracing, relief, detention, dissemination of humanitarian law, administration and computer technology. In addition, the ICRC has developed an interactive training programme for people sent on mission at short notice without the full benefit of the standard course. In a few hours of intensive work they can learn

### IN 1995, ON AVERAGE, THE ICRC HAD:

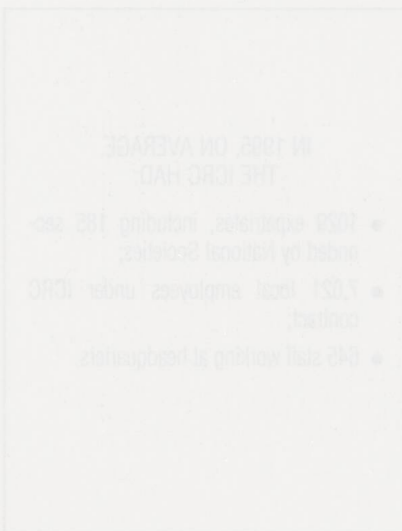
- 1029 expatriates, including 185 seconded by National Societies;
- 7,021 local employees under ICRC contract;
- 645 staff working at headquarters.

the basics of humanitarian law and the way in which the ICRC carries out its mandate to protect and assist victims of war.

#### NATIONAL SOCIETY STAFF SECONDED TO ICRC OPERATIONS BY COUNTRY

Australia .....	33	Japan .....	12
Austria .....	5	Malaysia .....	1
Belgium .....	9	Netherlands .....	38
Canada .....	39	New Zealand .....	13
Denmark .....	46	Norway .....	30
Finland .....	27	Portugal .....	3
France .....	31	Sweden .....	41
Germany .....	54	Switzerland .....	15
Iceland .....	10	Thailand .....	3
Ireland .....	19	United Kingdom .....	91
Italy .....	5	United States .....	13
TOTAL .....		538	

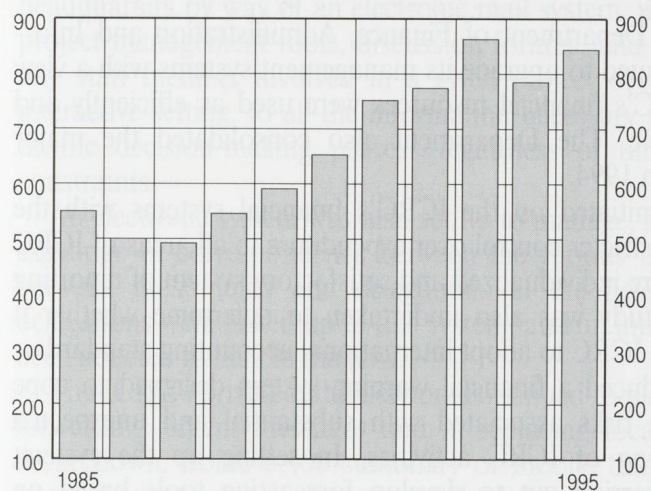
N.B. This list shows the number of people seconded and not the number of posts.



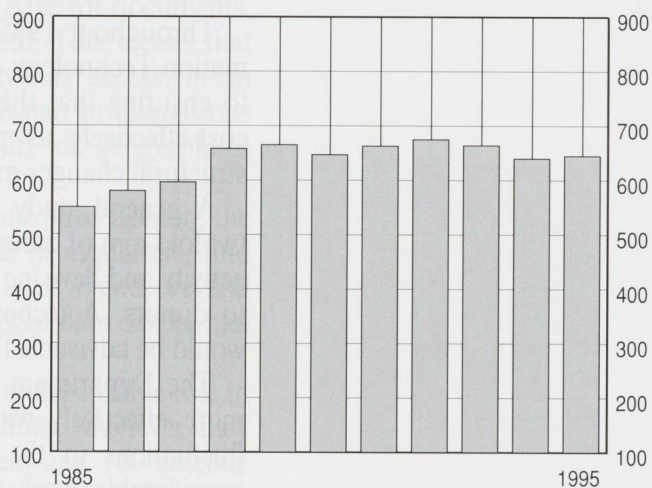


## Progression of staff requirements 1985-1995

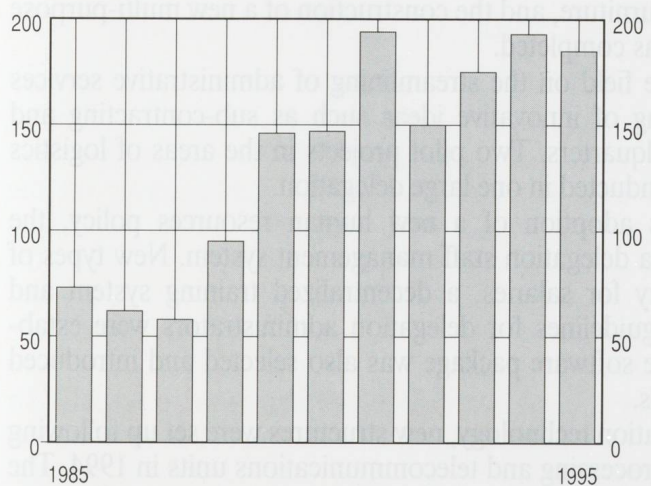
ICRC DELEGATES IN THE FIELD



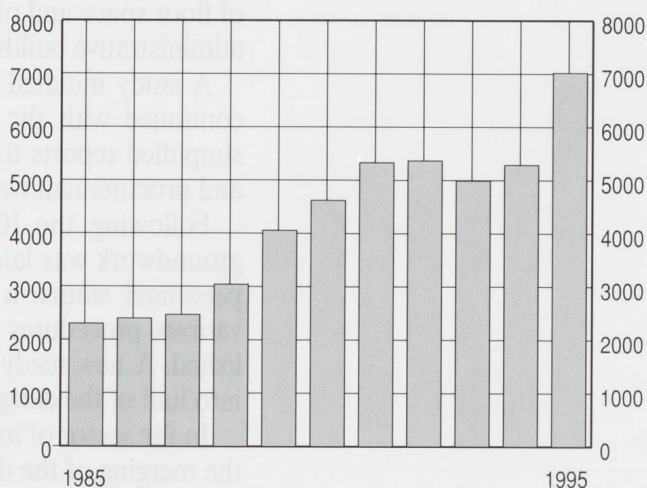
STAFF AT HEADQUARTERS



STAFF SECONDED BY NATIONAL SOCIETIES



FIELD STAFF HIRED LOCALLY



## FINANCE, ADMINISTRATION AND INFORMATION TECHNOLOGY, GENERAL SERVICES

Throughout 1995, the Department of Finance, Administration and Information Technology continued to upgrade its management systems with a view to ensuring that the ICRC's financial resources were used as efficiently and cost-effectively as possible. The Department also consolidated the major structural changes made in 1994.

A general study was initiated on the ICRC's financial systems with the twofold aim of exercising stricter control over expenditure in all areas of ICRC activity and devising a more individualized and satisfactory system of reporting to donors. A technical study was also undertaken to determine whether it would be advisable for the ICRC to adopt international accounting standards.

The Department introduced a financial warning system designed to cope more effectively with the risks associated with substantial and unexpected fluctuations in the funding of ICRC activities. In setting up the system, considerable work was carried out to develop forecasting tools based on relevant indicators. As a result, the ICRC now has access to a wide range of financial information provided by cash-flow management and forecasting mechanisms. To improve internal monitoring the ICRC also clarified and updated the rules on financial responsibility within its various departments.

In the area of general services, further efforts were made to optimize the use of floor space and office furniture, and the construction of a new multi-purpose administrative building was completed.

A study initiated in the field on the streamlining of administrative services continued with the testing of innovative ideas such as sub-contracting and simplified reports to headquarters. Two pilot projects in the areas of logistics and procurement were conducted in one large delegation.

Following the ICRC's adoption of a new human resources policy, the groundwork was laid for a delegation staff management system. New types of personnel status, a policy for salaries, a decentralized training system and various procedures and guidelines for delegation administrators were established. A new ready-made software package was also selected and introduced into half of the delegations.

In the sector of information technology, new structures were set up following the merging of the data-processing and telecommunications units in 1994. The decentralization of certain activities continued with the introduction of various



posts in the field involving greater responsibility in the design and use of information systems. The incumbents were specially trained for their new duties.

A set of office automation tools comprising standard WINDOWS software was installed on 2,500 workstations in the field and at headquarters. Groupware (software for collective use) now links the 700 workstations at headquarters by way of an electronic mail system, a data base for documents, project management tools, discussion forums, and so forth. This means that any staff member involved in a given project or activity has access, in an interactive setting, to all the information necessary to take part in discussions or the decision-making process regardless of time limits or geographical constraints.

An electronic system was also set up to manage, in a controlled fashion, the exchange of correspondence between the various units at headquarters, and between those units and delegations in the field. By year's end, several delegations were linked up to this system, and an international data carrier had been selected to handle the flow.

The ICRC's private radio network continued to play an indispensable role in forwarding urgent messages and in replacing local facilities whenever they broke down. Some 6,400 stationary or mobile transceivers and 160 satellite stations were in constant service in the field. A special unit was also set up to manage all electronic and other communications. Lastly, in 1995 the ICRC joined the INTERNET, which means that staff members can now obtain information from the NET and other external databases.

EXPENDITURE AND CHARGES (actual expenditure in kind and services in million of Swiss francs)			
	Headquarters Switzerland	Field operations	Total
1995	148.3	577.2	725.5
1994	138.7	612.2	750.9
1993	136.8	672.3	809.1
1992	122.7	644.8	767.5

# FINANCIAL TABLES

## Balance sheet (Table I)

The nearly 40 million Swiss franc (Sfr) drop in the ICRC's cash balance (including bank deposits) at year's end was partially offset by a Sfr 5 million increase in amounts receivable and a Sfr 14.5 million rise in the amount of contributions due. The Sfr 8.5 million increase in fixed assets was mainly accounted for by the ongoing construction of an administrative building in Geneva. In operational terms, the volume of ICRC operations with temporary deficit financing shown in the assets column of the balance sheet remained virtually unchanged.

Total short-term liabilities rose by nearly Sfr 8 million to Sfr 79 million. There was a downward trend in the financing of field activities, with a drop of nearly Sfr 15.1 million for all temporarily overfunded operations. Provisions for staff commitments fell sharply in 1995 owing to the transfer of Sfr 11 million to a foundation set up to enhance the professional skills of staff members, help them find another job should they leave the ICRC, and improve their retirement benefits. The foundation is one of the key elements of the new staff policy.

Lastly, the very marked fluctuations in the financing of the field activities in particular necessitated yet another increase in provisions for operational risks.

## Summary statement of income and expenditure/charges, and expenditure according to type of activity (Tables II and III)

While 1995 saw the launching of a considerable number of projects, such as the Advisory Service on international humanitarian law, the campaign against anti-personnel landmines and the setting up of the public server on the Internet, total headquarters expenditure remained largely within the budget line. Coverage of financial risk remained the topmost priority, as shown by the Sfr 6.9 million allocation to provisions for operational risks. In mid-year, when underfunding of ICRC operations reached the Sfr 70 million mark, these provisions once again proved to be essential.

As regards the field financial structure, there was a slight overall surplus (Sfr 6.8 million) in early 1995. As a result of the Sfr 70 million deficit in late June, however, the year closed with a Sfr 15.6 million drop in the net balance, showing a net decrease of Sfr 8.8 million. Cash expenditure fell by Sfr 12.4

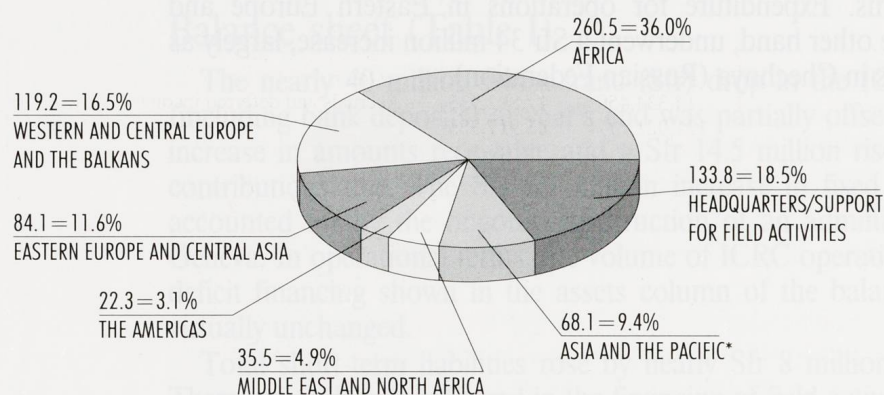
EXPENDITURE AND CHARGES (including contributions in kind and services) in millions of Swiss francs			
	Headquarters financial structure	Field financial structure	Total
1992	133.7	644.5	778.2
1993	138.6	672.3	810.9
1994	136.7	612.2	748.9
1995	146.3	577.2	723.5



## COMPARATIVE BALANCE SHEET AS AT 31 DECEMBER 1994/1995

million (2.5%), with a marked decline in Africa, despite the scale of operations conducted in Rwanda. This was due to a scaling down of relief work (which requires extensive infrastructure) and a shifting of emphasis to activities for the protection of victims. Expenditure for operations in Eastern Europe and Central Asia, on the other hand, underwent a Sfr 34 million increase, largely as a result of the events in Chechnya (Russian Federation).

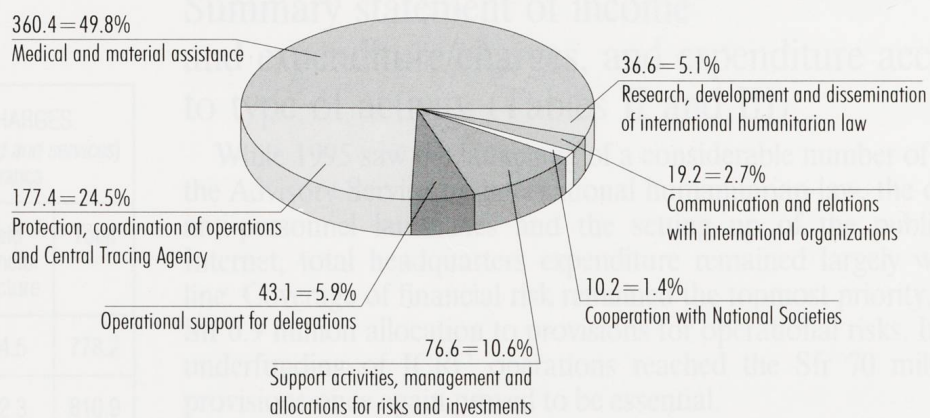
EXPENDITURE BY REGION IN 1995  
(including contributions in kind and services)  
in millions of Swiss francs



**Total: Sfr 723.5 million**

\* Except Central Asia

EXPENDITURE ACCORDING TO TYPE OF ACTIVITY IN 1995  
(including contributions in kind and services)  
in millions of Swiss francs



**Total: Sfr 723.5 million**



## COMPARATIVE BALANCE SHEET AS AT 31 DECEMBER 1994/1995

ASSETS (in Sfr)	1994	1995	LIABILITIES (in Sfr)	1994	1995
<b>CASH</b>	3,852,643	<b>1,020,987</b>	<b>SHORT-TERM LIABILITIES</b>		
			- Amounts payable		
			<i>. Governments</i>	7,209,840	<b>6,769,598</b>
			<i>. National Societies and various institutions</i>	551,729	<b>398,437</b>
			<i>. Other</i>	41,469,784	<b>50,441,819</b>
<b>OTHER CURRENT ASSETS</b>			- Accruals and deferred income	22,425,117	<b>21,694,955</b>
- Securities	14,334,450	<b>17,892,935</b>			
- Bank deposits	121,081,277	<b>83,917,505</b>			
- Amounts receivable				71,656,470	<b>79,304,809</b>
<i>. Governments</i>	20,680	<b>25,910</b>	<b>FUNDS FOR CURRENT OPERATIONS</b>		
<i>. National Societies and various institutions</i>	5,225,858	<b>3,090,315</b>	- Headquarters activities	815,618	<b>242,722</b>
<i>. Other</i>	2,059,433	<b>7,157,221</b>	- Field activities	22,760,713	<b>7,739,843</b>
- Accruals and prepaid expenditure	36,683,133	<b>51,167,625</b>			
	179,404,831	<b>163,251,511</b>		23,576,331	<b>7,982,565</b>
			<b>LONG-TERM LIABILITIES</b>		
			- Building loans	9,100,000	<b>8,900,000</b>
			<b>PROVISIONS</b>		
			- For operational risks	74,296,574	<b>81,607,908</b>
<b>ADVANCES TO DELEGATIONS</b>	12,948,333	<b>12,352,616</b>	- For staff commitments	20,037,525	<b>6,886,292</b>
			- For work in progress or to be undertaken	2,652,351	<b>2,415,156</b>
<b>FIXED ASSETS</b>			<b>FUNDS FOR INVESTMENTS</b>		
- Buildings	31,268,535	<b>36,538,796</b>	- For investments in real estate	29,027,263	<b>32,427,263</b>
- Emergency relief supplies	4,075,574	<b>6,175,617</b>	- For investments in furniture and equipment	10,528,125	<b>10,563,626</b>
- Furniture and other equipment	6,891,370	<b>8,055,663</b>		136,541,838	<b>133,900,245</b>
	42,235,479	<b>50,770,076</b>	<b>CAPITAL RESERVE</b>		
			- Carried forward	759,745	<b>1,041,297</b>
<b>OPERATIONS WITH TEMPORARY DEFICIT FINANCING</b>	15,974,650	<b>16,498,256</b>	- Excess income	281,552	<b>264,530</b>
			- General reserve	1,041,297	<b>1,305,827</b>
				12,500,000	<b>12,500,000</b>
				13,541,297	<b>13,805,827</b>
<b>TOTAL ASSETS</b>	254,415,936	<b>243,893,446</b>	<b>TOTAL LIABILITIES</b>	254,415,936	<b>243,893,446</b>
			<b>TRUST FUNDS</b>		
<b>TRUST FUNDS</b>			- Creditors	93,819	<b>82,665</b>
- Trust funds in banks	93,819	<b>82,665</b>			
<b>OVERALL TOTAL</b>	254,509,755	<b>243,976,111</b>	<b>OVERALL TOTAL</b>	254,509,755	<b>243,976,111</b>

# SUMMARY STATEMENT OF INCOME

EXPENDITURE (in Sfr)	IN CASH			EXPENDITURE IN KIND AND/OR SERVICES
	HEADQUARTERS	FIELD	TOTAL	
SECRETARIAT OF THE ASSEMBLY AND THE EXECUTIVE BOARD	4,081,938		4,081,938	
INTERNAL AUDIT	928,314		928,314	
<b>GENERAL DIRECTORATE</b>	4,046,321		4,046,321	
- Communication and external resources	22,092,302		22,092,302	165,272
- Finance, administration and information technology	31,482,122		31,482,122	
- Human resources	13,441,349		13,441,349	
	71,062,094		71,062,094	165,272
<b>OPERATIONS</b>	2,998,892		2,998,892	
- Zones:				
Africa	2,531,803	223,436,505	225,968,308	33,628,742
The Americas	894,221	20,808,689	21,702,910	286,591
Asia and the Pacific	1,562,006	61,072,933	62,634,939	5,091,461
Western and Central Europe and the Balkans	1,552,306	93,823,156	95,375,462	23,864,055
Eastern Europe and Central Asia	1,411,754	63,653,887	65,065,641	18,462,150
Middle East and North Africa	1,414,489	32,329,880	33,744,369	691,577
- Central Tracing Agency	5,369,737		5,369,737	
- Detention	2,256,458		2,256,458	
- Medical	6,313,953		6,313,953	80,404
- Relief	5,641,937		5,641,937	143,553
- Relations with international organizations	3,612,800		3,612,800	
- Management of operational personnel	3,359,287		3,359,287	
	38,919,643	495,125,050	534,044,693	82,248,533
<b>PRINCIPLES, LAW AND RELATIONS WITH THE MOVEMENT</b>	3,411,538		3,411,538	
- Principles and relations with the Movement	2,571,126		2,571,126	
- Dissemination and cooperation with the National Red Cross and Red Crescent Societies	2,884,145		2,884,145	276,500
- Legal Division	3,619,217		3,619,217	
- Division for Dissemination to the Armed Forces	983,867		983,867	
	13,469,893		13,469,893	276,500
<b>OTHER ACTIVITIES UNDER ICRC AUSPICES</b>				
- International Tracing Service, Arolsen	242,272		242,272	
<b>OTHER EXPENDITURE</b>				
- Reversal of provisions for staff commitments	(11,007,522)		(11,007,522)	
- Cash transfer for constitution of the "Fondation Avenir du CICR"	11,007,522		11,007,522	
- Use of provisions for work in progress	(387,195)		(387,195)	
- Allocation to provisions for operational risks	6,900,000		6,900,000	
- Allocation to provisions for staff commitments	500,000		500,000	
- Allocation to provisions for work in progress	150,000		150,000	
- Allocation to fund for investments in real estate	3,400,000		3,400,000	
- Other expenditure	6,393,002		6,393,002	
	16,955,807		16,955,807	
<b>TOTAL EXPENDITURE</b>	145,659,961	495,125,050	640,785,011	82,690,305
<b>BROUGHT FORWARD</b>				
- Excess income for programmes to be carried out in 1996	18,200		18,200	
<b>RESULT</b>				
- Excess income over expenditure	264,530		264,530	
<b>GRAND TOTAL</b>	145,942,691	495,125,050	641,067,741	82,690,305



TABLE II

## AND EXPENDITURE/CHARGES IN 1995

INCOME (in Sfr)	IN CASH			INCOME IN KIND AND/OR SERVICES
	HEADQUARTERS	FIELD	TOTAL	
<b>CONTRIBUTIONS</b>				
- Governments	93,837,812	363,116,190	<b>456,954,002</b>	23,386,693
- Supranational organizations		57,347,291	<b>57,347,291</b>	2,830,117
- National Societies	5,057,719	28,959,607	<b>34,017,326</b>	55,510,839
- Public sources	3,398,300	1,127,180	<b>4,525,480</b>	
- Non-governmental organizations		59,000	<b>59,000</b>	635,983
- Private sources:				
<i>Support association</i>	425,000		<b>425,000</b>	
<i>Swiss companies</i>	2,061,692		<b>2,061,692</b>	
<i>Gifts and legacies</i>	7,553,016	14,613,340	<b>22,166,356</b>	326,673
<i>Direct mail in Switzerland</i>		2,655,774	<b>2,655,774</b>	
- Transfer of Swiss Government contribution	(2,000,000)	2,000,000		
	110,333,539	469,878,382	<b>580,211,921</b>	82,690,305
<b>FINANCIAL INCOME</b>	3,580,711		<b>3,580,711</b>	
<b>PARTICIPATION FROM FIELD BUDGETS</b>	30,218,900		<b>30,218,900</b>	
<b>OTHER INCOME</b>				
- Payment for services	664,052		<b>664,052</b>	
- Adjustments of previous financial years	451,683		<b>451,683</b>	
- Other income	102,710	10,451,906	<b>10,554,616</b>	
	1,218,445	10,451,906	<b>11,670,351</b>	
<b>TOTAL INCOME</b>	145,351,595	480,330,288	<b>625,681,883</b>	82,690,305
<b>BALANCES BROUGHT FORWARD</b>				
- Excess expenses deducted from funds for specially financed operations	591,096	14,794,762	<b>15,385,858</b>	
<b>GRAND TOTAL</b>	145,942,691	495,125,050	<b>641,067,741</b>	82,690,305

## EXPENDITURE IN 1995

(INCLUDING GIFTS)

TYPE OF ACTIVITY		(Sfr x 1,000)			
		HEADQUARTERS BUDGET AND EXTRA-BUDGETARY EXPENSES	FIELD BUDGETS	TOTAL	%
1.	ACTIVITIES BASED ON OR DIRECTLY RELATED TO THE GENEVA CONVENTIONS AND OTHER INSTRUMENTS OF INTERNATIONAL HUMANITARIAN LAW				
1.1	PROTECTION ACTIVITIES AND COORDINATION OF OPERATIONS				
	AFRICA.....	2,532	54,982	57,514	
	THE AMERICAS.....	894	11,814	12,708	
	ASIA AND THE PACIFIC.....	1,562	22,148	23,710	
	WESTERN AND CENTRAL EUROPE AND THE BALKANS.....	1,552	20,090	21,642	
	EASTERN EUROPE AND CENTRAL ASIA.....	1,412	12,137	13,549	
	MIDDLE EAST AND NORTH AFRICA.....	1,415	14,886	16,301	
	HEADQUARTERS.....	5,027		5,027	
		14,394	136,057	150,451	20.79
1.2	CENTRAL TRACING AGENCY				
	AFRICA.....	933	11,788	12,721	
	THE AMERICAS.....	294	1,243	1,537	
	ASIA AND THE PACIFIC.....	312	1,726	2,038	
	WESTERN AND CENTRAL EUROPE AND THE BALKANS.....		4,445	4,445	
	EASTERN EUROPE AND CENTRAL ASIA.....	554	443	997	
	MIDDLE EAST AND NORTH AFRICA.....	1,042	1,655	2,697	
	HEADQUARTERS.....	2,527		2,527	
		5,662	21,300	26,962	3.73
1.3	RELATIONS WITH INTERNATIONAL ORGANIZATIONS.....	3,887		3,887	0.54
1.4	MEDICAL ACTIVITIES				
	AFRICA.....		29,086	29,086	
	THE AMERICAS.....		2,827	2,827	
	ASIA AND THE PACIFIC.....		17,584	17,584	
	WESTERN AND CENTRAL EUROPE AND THE BALKANS.....		38,397	38,397	
	EASTERN EUROPE AND CENTRAL ASIA.....		8,574	8,574	
	MIDDLE EAST AND NORTH AFRICA.....		10,288	10,288	
	HEADQUARTERS.....	6,394		6,394	
		6,394	106,756	113,150	15.64
1.5	RELIEF ACTIVITIES				
	AFRICA.....		129,008	129,008	
	THE AMERICAS.....		482	482	
	ASIA AND THE PACIFIC.....		13,411	13,411	
	WESTERN AND CENTRAL EUROPE AND THE BALKANS.....		45,845	45,845	
	EASTERN EUROPE AND CENTRAL ASIA.....		52,363	52,363	
	MIDDLE EAST AND NORTH AFRICA.....		303	303	
	HEADQUARTERS.....	5,786		5,786	
		5,786	241,412	247,198	34.17
1.6	COOPERATION IN THE DEVELOPMENT OF NATIONAL RED CROSS AND RED CRESCENT SOCIETIES				
	AFRICA.....		4,849	4,849	
	THE AMERICAS.....		480	480	
	ASIA AND THE PACIFIC.....		1,873	1,873	
	WESTERN AND CENTRAL EUROPE AND THE BALKANS.....		1,002	1,002	
	EASTERN EUROPE AND CENTRAL ASIA.....		633	633	
	MIDDLE EAST AND NORTH AFRICA.....		1,348	1,348	
			10,185	10,185	1.41
	Carry forward	36,123	515,710	551,833	76.28



# ACCORDING TO TYPE OF ACTIVITY

IN KIND AND SERVICES)

TYPE OF ACTIVITY		(Sfr x 1,000)			
		HEADQUARTERS BUDGET AND EXTRA-BUDGETARY EXPENSES	FIELD BUDGETS	TOTAL	%
	Brought forward	36,123	515,710	551,833	76.28
1.7	INTERNATIONAL HUMANITARIAN LAW: IMPLEMENTATION, RESEARCH AND DEVELOPMENT.....	7,031		7,031	0.97
1.8	DISSEMINATION OF INTERNATIONAL HUMANITARIAN LAW				
	AFRICA.....		6,783	6,783	
	THE AMERICAS.....		1,867	1,867	
	ASIA AND THE PACIFIC.....		2,478	2,478	
	WESTERN AND CENTRAL EUROPE AND THE BALKANS.....		2,577	2,577	
	EASTERN EUROPE AND CENTRAL ASIA.....		3,337	3,337	
	MIDDLE EAST AND NORTH AFRICA.....		1,322	1,322	
	HEADQUARTERS.....	11,215		11,215	
		11,215	18,364	29,579	4.09
1.9	COMMUNICATION.....	15,312		15,312	2.12
2.	OPERATIONAL SUPPORT AT DELEGATIONS				
	AFRICA.....		20,568	20,568	
	THE AMERICAS.....		2,383	2,383	
	ASIA AND THE PACIFIC.....		6,945	6,945	
	WESTERN AND CENTRAL EUROPE AND THE BALKANS.....		5,330	5,330	
	EASTERN EUROPE AND CENTRAL ASIA.....		4,630	4,630	
	MIDDLE EAST AND NORTH AFRICA.....		3,219	3,219	
			43,075	43,075	5.95
3.	SUPPORT ACTIVITIES				
3.1	GENERAL POLICY AND OPERATIONAL SUPPORT.....	3,684		3,684	
3.2	HUMAN RESOURCES:				
	RECRUITMENT, TRAINING, DEVELOPMENT AND MANAGEMENT.....	16,204		16,204	
3.3	EXTERNAL RESOURCES.....	3,920		3,920	
3.4	INFORMATION TECHNOLOGY AND TELECOMMUNICATIONS.....	17,252		17,252	
		41,060		41,060	5.68
4.	FINANCIAL MANAGEMENT AND GENERAL SERVICES				
4.1	FINANCIAL MANAGEMENT.....	5,832		5,832	
4.2	MANAGEMENT CONTROL AND EXTERNAL AUDITING.....	1,695		1,695	
4.3	GENERAL SERVICES.....	11,102		11,102	
		18,629		18,629	2.57
5.	ALLOCATIONS FOR RISKS, COMMITMENTS AND INVESTMENTS				
5.1	USE OF PROVISIONS FOR WORK IN PROGRESS.....	(387)		(387)	
5.2	ALLOCATION TO PROVISIONS FOR OPERATIONAL RISKS.....	6,900		6,900	
5.3	ALLOCATION TO PROVISIONS FOR STAFF COMMITMENTS.....	500		500	
5.4	ALLOCATION TO PROVISIONS FOR WORK IN PROGRESS.....	150		150	
5.5	ALLOCATION TO THE FUND FOR INVESTMENTS IN FIXED ASSETS.....	3,400		3,400	
5.6	OTHER EXPENDITURE.....	6,393		6,393	
		16,956		16,956	2.34
	<b>TOTAL FOR ALL ACTIVITIES</b>	146,326	577,149	723,475	100.00

## CONTRIBUTIONS IN 1995

(in Sfr)

## Governments

COUNTRY	HEAD- QUARTERS BUDGET	FIELD BUDGET	TOTAL	Contributions in kind and/or services
Algeria	32,250		32,250	
Andorra	20,000		20,000	
Argentina		11,310	11,310	
Australia	643,039	1,912,873	2,555,912	
Austria	774,222	536,506	1,310,728	730,854
Bahamas	1,289		1,289	
Bangladesh	9,397		9,397	
Belgium	1,215,119	1,184,729	2,399,848	703,304
Belize	5,750		5,750	
Bhutan	5,590		5,590	
Brazil	149,400		149,400	
Bulgaria	20,000		20,000	
Cambodia	11,600		11,600	
Canada	1,781,736	16,827,977	18,609,713	1,106,354
China	450,000		450,000	
Colombia	124,500		124,500	
Costa Rica	43,319		43,319	
Cuba	3,275		3,275	
Cyprus	60,000		60,000	
Czech Republic	65,000		65,000	
Denmark	1,491,583	9,783,248	11,274,831	1,187,819
Dominican Rep.	10,170		10,170	
Ecuador	1,464		1,464	
Egypt	73,450		73,450	
El Salvador	23,000		23,000	
Fiji	7,360		7,360	
Finland	399,627	1,642,947	2,042,574	1,301,725
France	1,600,000	5,036,200	6,636,200	135,678
Germany	886,600	6,253,376	7,139,976	1,388,154
Greece	244,182		244,182	
Hungary	25,000		25,000	
Iceland	27,000		27,000	
India	11,043		11,043	
Ireland	169,200	1,612,852	1,782,052	
Israel	93,600		93,600	
Italy	852,000	4,993,710	5,845,710	
Jamaica	11,896		11,896	
Japan	1,300,000	17,458,000	18,758,000	
Jordan	54,435		54,435	
Korea, Republic of	456,000		456,000	
Kuwait		11,700	11,700	
Lebanon	56,175		56,175	
Liechtenstein	140,000	60,000	200,000	
Luxembourg	156,720	2,698,626	2,855,346	

COUNTRY	HEAD- QUARTERS BUDGET	FIELD BUDGET	TOTAL	Contributions in kind and/or services
Malaysia	24,112		24,112	
Malta	8,442	3,284	11,726	
Mauritius	13,200		13,200	
Mexico	116,000		116,000	
Monaco	38,000		38,000	
Morocco	50,000		50,000	
Myanmar	17,700		17,700	
Netherlands	887,025	47,654,250	48,541,275	856,249
New Zealand	308,911	77,220	386,131	
Norway	929,500	22,018,785	22,948,285	214,938
Pakistan	12,325		12,325	
Panama	31,005		31,005	
Paraguay	23,660		23,660	
Philippines	63,616		63,616	
Poland	90,000		90,000	
Portugal	200,000	161,700	361,700	
Senegal	14,026		14,026	
Singapore	17,550		17,550	
Slovenia	30,000		30,000	
Spain	1,003,109	552,176	1,555,285	506,719
Sri Lanka	5,900		5,900	
Sweden	1,399,600	30,225,928	31,625,528	248,474
Switzerland	60,000,000	31,368,963	91,368,963	426,707
Thailand	87,336	34,800	122,136	
Tonga	11,272		11,272	
Trinidad & Tobago	768		768	
Tunisia	9,440		9,440	
Turkey	100,000		100,000	
United Kingdom	830,500	27,225,570	28,056,070	1,146,797
United States of America	13,781,800	133,769,460	147,551,260	13,432,921
Vatican	5,900		5,900	
Venezuela	221,124		221,124	
Total from Governments	93,837,812	363,116,190	456,954,002	23,386,693

## European Union and international organizations

EU food aid		12,500,723	12,500,723	1,598,559
EU emergency aid		44,451,411	44,451,411	
UN agencies		395,157	395,157	1,231,558
Total from EU and international organizations		57,347,291	57,347,291	2,830,117



## CONTRIBUTIONS IN 1995

(in Sfr)

## National Societies

COUNTRY	HEAD- QUARTERS BUDGET	FIELD BUDGET	TOTAL	Contributions in kind and/or services
Algeria	23,795		23,795	
Australia	132,614	299,360	431,974	1,461,779
Austria	65,704	1,778,446	1,844,150	5,487,230
Bahamas	3,106		3,106	
Bangladesh	2,814		2,814	
Belgium	91,795		91,795	962,709
Botswana	1,751		1,751	
Brazil		33,900	33,900	
Bulgaria	12,996		12,996	
Canada	93,970	278,347	372,317	1,974,408
Cape Verde	947		947	
Chile	6,308		6,308	
China	70,751		70,751	
Colombia	28,433		28,433	
Croatia	7,861		7,861	
Cyprus		7,547	7,547	
Czech Republic	8,000		8,000	
Denmark	104,406	1,114,837	1,219,243	3,944,287
Dominica	477		477	
Estonia	4,076		4,076	
Ethiopia	8,055		8,055	
Fidji	1,747		1,747	
Finland	96,786	942,199	1,038,985	1,434,492
France	415,604	2,150,708	2,566,312	1,374,413
Germany	909,843	6,916,673	7,826,516	9,310,703
Greece	35,000		35,000	
Honduras	2,789		2,789	
Hungary				29,872
Iceland	18,955	308,431	327,386	585,408
Iran	30,830		30,830	
Ireland	14,216	191,400	205,616	617,858
Italy	132,840	332,247	465,087	351,581
Japan	865,366	2,339,261	3,204,627	481,702
Jordan	1,431		1,431	
Korea, Republic of	89,100	78,361	167,461	
Lesotho	2,333		2,333	
Liechtenstein	17,566	58,315	75,881	
Luxembourg	28,921		28,921	
Malta	485	334	819	
Mauritius	947		947	
Monaco	19,313	57,101	76,414	
Mongolia	575		575	
Morocco	1,379		1,379	

COUNTRY	HEAD- QUARTERS BUDGET	FIELD BUDGET	TOTAL	Contributions in kind and/or services
Namibia	485		485	
Nepal	1,747		1,747	
Netherlands	184,461	1,358,719	1,543,180	4,553,897
New Zealand	39,209	205,842	245,051	388,713
Nigeria	489		489	
Norway	111,150	2,206,105	2,317,255	6,745,648
Pakistan	6,017		6,017	
Paraguay	2,038		2,038	
Poland	17,060		17,060	119,720
Portugal	22,746		22,746	299,615
Qatar	4,699		4,699	
Romania	3,000		3,000	
Saint Lucia	569		569	
Senegal	1,899		1,899	
Seychelles				61,200
Slovak Republic	5,000		5,000	
Slovenia	5,241		5,241	
Solomon Islands	485		485	
South Africa, Republic of		4,727	4,727	
Spain	267,581	48,221	315,802	460,961
Swaziland	947		947	
Sweden	101,100	4,373,054	4,474,154	4,225,414
Switzerland	112,783		112,783	3,106,907
Syria	2,244		2,244	
Thailand	47,387		47,387	136,500
United Arab Emirates		11,700	11,700	
United Kingdom	348,218	3,321,782	3,670,000	6,545,809
United States of America	413,683	541,990	955,673	831,683
Uruguay	348		348	
Vanuatu	582		582	
Viet Nam	1,891		1,891	
Zambia	775		775	
Various National Societies				840
Int. Federation of Red Cross and Red Crescent Societies				17,490
Total from National Societies	5,057,719	28,959,607	34,017,326	55,510,839

## CONTRIBUTIONS IN 1995

(in Sfr)

*Public sources*

DONOR	HEAD- QUARTERS BUDGET	FIELD BUDGET	TOTAL	Contributions in kind and/or services
Bellinzona	5,000		5,000	
Bernex	300		300	
Chêne-Bougerie	40,000	5,000	45,000	
Confignon		2,700	2,700	
Drôme, Department of		102,480	102,480	
Fribourg, Canton of	27,000		27,000	
Geneva, Canton of	3,000,000	500,000	3,500,000	
Geneva, City of	250,000		250,000	
Jussy		4,000	4,000	
Lausanne		10,000	10,000	
Locarno	10,000		10,000	
Lugano	15,000	5,000	20,000	
Meilen		10,000	10,000	
Meyrin		20,000	20,000	
Schönbühl	1,000		1,000	
Thurgau, Canton of	50,000	20,000	70,000	
Vandoeuvres		13,000	13,000	
Vernier		5,000	5,000	
Zoug, Canton of		200,000	200,000	
Zurich, Canton of		230,000	230,000	
Total from public sources	3,398,300	1,127,180	4,525,480	

*Non-governmental organizations*

DONOR	HEAD- QUARTERS BUDGET	FIELD BUDGET	TOTAL	Contributions in kind and/or services
AG Fund		59,000	59,000	
World Vision				635,983
Total from NGOs		59,000	59,000	635,983

*Private sources*

Support association	425,000		425,000	
Swiss companies	2,061,692		2,061,692	
Gifts and legacies	7,553,016	14,613,340	22,166,356	326,673
Direct mail in Switzerland		2,655,774	2,655,774	
Total from private sources	10,039,708	17,269,114	27,308,822	326,673

*Transfer of Swiss Government contribution*

Transfer	(2,000,000)	2,000,000		
----------	-------------	-----------	--	--

Grand total	110,333,539	469,878,382	580,211,921	82,690,305
-------------	-------------	-------------	-------------	------------



## MOVEMENT OF FUNDS FOR ICRC EMERGENCY OPERATIONS IN 1995

(in Sfr)

	FINANCIAL MOVEMENTS					CONTRIBUTIONS IN KIND AND/OR SERVICES
	BALANCE CARRIED FORWARD 01.01.1995	CORRECTIONS/ TRANSFERS	RECEIPTS	EXPENDITURE	BALANCE AT 31.12.1995	
<b>AFRICA</b>						
- With surplus financing.....	19,699,611				2,625,699	
- With deficit financing.....	(75,732)				(7,431,582)	
	19,623,879	(557,499)*	199,564,242	(223,436,505)	(4,805,883)	33,628,742
<b>THE AMERICAS</b>						
- With surplus financing.....	54,995				54,995	
- With deficit financing.....	(823,070)				(1,660,218)	
	(768,075)		19,971,541	(20,808,689)	(1,605,223)	286,591
<b>ASIA AND THE PACIFIC</b>						
- With surplus financing.....	135,168				3,293,562	
- With deficit financing.....	(1,386,338)				(295,805)	
	(1,251,170)		65,321,860	(61,072,933)	2,997,757	5,091,461
<b>WESTERN AND CENTRAL EUROPE AND THE BALKANS</b>						
- With surplus financing.....	1,545,157				1,753,732	
- With deficit financing.....	(8,240,325)				(2,927,618)	
	(6,695,168)	(192,215)	99,536,653	(93,823,156)	(1,173,886)	23,864,055
<b>EASTERN EUROPE AND CENTRAL ASIA</b>						
- With surplus financing.....	650,540				11,854	
- With deficit financing.....	(3,016,883)				(1,504,722)	
	(2,366,343)	(50,685)	64,578,047	(63,653,887)	(1,492,868)	18,462,150
<b>MIDDLE EAST AND NORTH AFRICA</b>						
- With surplus financing.....	675,242				(2,678,310)	
- With deficit financing.....	(2,432,302)				(2,678,310)	
	(1,757,060)	50,685	31,357,945	(32,329,880)	(2,678,310)	691,577
<b>TOTAL</b>						
- With surplus financing.....	22,760,713				7,739,842	
- With deficit financing.....	(15,974,650)				(16,498,255)	
	6,786,063	(749,714)	480,330,288	(495,125,050)	(8,758,413)	82,024,576

\* Including US\$ 100,000 (Sfr 114,000) retransfer to the Japanese Red Cross Society from a Japanese Government contribution.



Report of the auditors  
for the year ended December 31, 1995  
to the general meeting of the  
**INTERNATIONAL COMMITTEE OF THE RED CROSS, GENEVA**

As auditors of your association, by virtue of article 11 paragraph 2 of the articles of incorporation and articles 43 and 45 of the internal governing regulations, we have examined the books of account and the financial statements for the year ended December 31, 1995 in accordance with the provisions of the law and the articles of association. Our audit was conducted in accordance with auditing standards promulgated by the profession. We confirm that we meet the legal requirements concerning professional qualification and independence.

On the basis of our audit and the reports of KPMG London, who were responsible for reviewing that the income and expenditure relating to the operations of the ICRC in the field have been correctly accounted for, we conclude that the books of account and the financial statements are in accordance with articles 957 and onwards of the Swiss Code of Obligations and the articles of incorporation.

We recommend that the financial statements submitted to you be approved.

The account of income and expenditure/charges includes a column which sets out the gifts in kind or of services received by the ICRC. This consists of statistical information not recorded in the books of account. We have not examined this information. This data has been reviewed, however, as part of the review work performed by KPMG.

Geneva, April 5, 1996

**ATAG Ernst & Young SA**

M. Maglock  
Swiss certified accountant  
(Auditor in charge)

G. Moinat  
Swiss certified accountant



## SPECIAL FUNDS

### FOUNDATION FOR THE INTERNATIONAL COMMITTEE OF THE RED CROSS

#### BALANCE SHEET AS AT 31 DECEMBER 1995

ASSETS	Sfr	LIABILITIES	Sfr
Securities.....	1,580,469	Inalienable capital.....	1,391,628
(market value : Sfr 1,724,923)		Inalienable reserve.....	347,094
Time deposits.....	200,000	<i>Total capital</i> .....	1,738,722
Federal Tax Administration, Bern		International Committee of the	
(withholding tax refund).....	10,127	Red Cross, current account.....	69,302
Banks.....	17,428		
	<u>1,808,024</u>		<u>1,808,024</u>

#### RECEIPTS AND EXPENDITURE ACCOUNT FOR 1995

EXPENDITURE	Sfr	RECEIPTS	Sfr
Bank and custody charges.....	9,232	Contributions.....	75,000
Charges on purchase / sale of securities	4,591	Income from securities.....	55,421
Premium on purchase / loss on sale of		Income from time deposits.....	8,131
securities.....	40,151	Bank interest.....	373
Audit fees.....	2,773	Profit on refund of securities.....	59,460
Loss on exchange rates.....	110		
	<u>56,857</u>		<u>198,385</u>

#### RESULT

	Sfr
Excess of receipts over expenditure in 1995.....	<u>141,528</u>

#### ESTABLISHMENT

1 May 1931.

#### OBJECT

To help the International Committee of the Red Cross to continue in complete independence the humanitarian activities which, in accordance with its Statutes, it carries out in time of peace as in time of war.

#### ADMINISTRATION

A Council composed of:

- one member nominated by the Swiss Federal Council;
- four members appointed by the International Committee of the Red Cross .

## AUGUSTA FUND

### BALANCE SHEET AS AT 31 DECEMBER 1995

ASSETS	Sfr	LIABILITIES	Sfr	Sfr
Securities.....	134,709	Inalienable capital.....		100,000
(market value : Sfr 151,398)		Provision for portfolio variation.....		18,470
Federal Tax Administration, Bern		<i>Florence Nightingale Medal Fund,</i>		
(withholding tax refund).....	1,218	<i>current account :</i>		
Banks.....	12,183	Balance brought forward from 1994....	27,454	
International Committee of the		Excess of receipts over expenditure		
Red Cross, current account.....	3,204	in 1995.....	5,390	
				32,844
	<u>151,314</u>			<u>151,314</u>

### RECEIPTS AND EXPENDITURE ACCOUNT FOR 1995

EXPENDITURE	Sfr	RECEIPTS	Sfr
Bank and custody charges.....	865	Income from securities.....	6,382
Audit fees.....	217	Bank interest.....	90
	<u>1,082</u>		<u>6,472</u>

### RESULT

	Sfr
Excess of receipts over expenditure in 1995.....	<u>5,390</u>

#### ESTABLISHMENT

*In 1890, at the initiative of the ICRC, to commemorate the services rendered to the Red Cross by the German Empress Augusta, wife of Wilhelm I.*

#### OBJECT

*Modified on several occasions.*

*At the Twenty-first International Conference of the Red Cross, held in Istanbul in 1969, it was decided that, pending*

*further modification, receipts from the Augusta Fund would be allocated to the Florence Nightingale Medal Fund. This decision was confirmed at the Twenty-second Conference, held in Tehran in 1973.*

#### ADMINISTRATION

*In view of the above decision, the same as for the Florence Nightingale Medal Fund.*



## FLORENCE NIGHTINGALE MEDAL FUND

### BALANCE SHEET AS AT 31 DECEMBER 1995

ASSETS	Sfr	LIABILITIES	Sfr	Sfr
Securities.....	162,172	Capital.....		75,000
(market value : Sfr 173,134)				
Stock of medals.....	51,668			
Federal Tax Administration, Bern		<i>Reserve :</i>		
(withholding tax refund).....	657	Balance brought forward from 1994....	119,083	
Banks.....	1,656	Excess of receipts over expenditure		
Augusta Fund, current account.....	32,844	in 1995.....	472	
				119,555
		International Committee of the		
		Red Cross, current account.....		54,442
	<u>248,997</u>			<u>248,997</u>

### RECEIPTS AND EXPENDITURE ACCOUNT FOR 1995

EXPENDITURE	Sfr	RECEIPTS	Sfr
Presentation of medals, printing and		Allocation of the excess of receipts over	
dispatching circulars.....	10,477	expenditure at 31 December 1995 of the	
Bank and custody charges.....	825	Augusta Fund, in accordance with the	
Charges on purchase of securities.....	509	decision of the Twenty-first International	
Audit fees.....	296	Conference of the Red Cross.....	5,390
		Income from securities.....	7,020
		Bank interest.....	169
	<u>12,107</u>		<u>12,579</u>

### RESULT

	Sfr
Excess of receipts over expenditure in 1995.....	<u>472</u>

#### ESTABLISHMENT

*In accordance with the recommendations of the Eighth International Conference of the Red Cross, held in London in 1907, and with the decision of the Ninth Conference held in Washington 1912, a fund was established by contributions from National Red Cross Societies.*

*The regulations were revised by the Eighteenth International Conference of the Red Cross, held in Toronto in 1952, and by the Council of Delegates, held in Budapest in 1991.*

#### OBJECT

*The Fund's income is used to distribute a medal, called the "Florence Nightingale Medal", to honour the life and work of Florence Nightingale.*

*The medal may be awarded to Red Cross and Red Crescent nurses and voluntary aides for having distinguished themselves by their service to sick and wounded people in time of peace or war.*

*The medal is awarded every two years by the ICRC on the basis of proposals made to it by the National Societies.*

*Only 50 medals may be distributed at any one time.*

#### ADMINISTRATION

*A Commission composed of five ICRC representatives, including four Committee members.*

# CLARE R. BENEDICT FUND

## BALANCE SHEET AS AT 31 DECEMBER 1995

ASSETS		LIABILITIES	
	USD		USD
Securities.....	2,193,195	Capital.....	1,395,409
(market value : USD 3,334,370)		<i>Provision for portfolio variation :</i>	
Time deposits.....	264,957	Balance brought forward from 1994....	603,006
Federal Tax Administration, Bern		Reduction of the provision for	
(withholding tax refund).....	28,926	portfolio variation.....	(165,100)
Banks.....	143,084		437,906
		<i>Receipts and expenditure account :</i>	
		Balance brought forward from 1994...	225,429
		Attribution decided in 1995.....	(225,429)
		Excess of receipts over expenditure	
		in 1995.....	793,541
			793,541
		International Committee of the	
		Red Cross, current account.....	3,306
	<u>2,630,162</u>		<u>2,630,162</u>

## RECEIPTS AND EXPENDITURE ACCOUNT FOR 1995

EXPENDITURE		RECEIPTS	
	USD		USD
Bank and custody charges.....	36,850	Income from securities.....	203,576
Charges on purchase / sale of securities	9,559	Income from time deposits.....	10,226
Premium on purchase / loss on sale of		Bank interest.....	11,226
securities.....	45,506	Discount on purchase / profit on sale	
Audit fees.....	3,305	of securities.....	465,775
		Net profit on exchange rates.....	32,858
		Reduction of the provision for	
		portfolio variation.....	165,100
	<u>95,220</u>		<u>888,761</u>

## RESULT

	USD
Excess of receipts over expenditure in 1995 for attribution.....	<u>793,541</u>

### ESTABLISHMENT

1 February 1968.

### OBJECT

The Fund's income is attributed to assistance activities for

the victims of armed conflicts, in accordance with Miss Benedict's wishes .

### ADMINISTRATION

A Commission composed of three persons appointed by the ICRC .



## MAURICE DE MADRE FRENCH FUND

### BALANCE SHEET AS AT 31 DECEMBER 1995

ASSETS	Sfr	LIABILITIES	Sfr	Sfr
Securities.....	2,943,050	<i>Capital :</i>		
(market value : Sfr 3,211,290)		Balance brought forward from 1994....	3,001,271	
Federal Tax Administration, Bern		Excess of expenditure over receipts		
(withholding tax refund).....	49,599	in 1995.....	(140,539)	
Banks.....	32,959			
		<i>Total capital</i>		2,860,732
		Dependant's allowance.....		13,725
		International Committee of the		
		Red Cross, current account.....		151,151
	<u>3,025,608</u>			<u>3,025,608</u>

### RECEIPTS AND EXPENDITURE ACCOUNT FOR 1995

EXPENDITURE	Sfr	RECEIPTS	Sfr
Allocations.....	186,091	Income from securities.....	118,610
Bank and custody charges.....	20,088	Income from time deposits.....	4,971
Premium on purchase /loss on sale of		Discount on purchase / profit on sale	
securities.....	98,220	of securities.....	42,112
Audit fees.....	4,637	Bank interest.....	3,051
Other expenses.....	247		
	<u>309,283</u>		<u>168,744</u>

### RESULT

	Sfr
Excess of expenditure over receipts in 1995.....	<u>(140,539)</u>

#### ESTABLISHMENT

ICRC Assembly decision of 19 December 1974. .

#### OBJECT

*To assist temporary or permanent staff, such as delegates and nurses, of international or national Red Cross or Red Crescent institutions who, in the course of their work or during war operations or natural disasters, have suffered injury and thereby find themselves in straitened circumstances or in reduced health .*

*In the event that the persons specified above should lose*

*their lives in the course of the said humanitarian activities payments may be made to their families.*

#### ADMINISTRATION

*A Board composed of five persons appointed by the ICRC, currently:*

- two ICRC members or staff;
- one representative of the International Federation of Red Cross and Red Crescent Societies;
- one representative of the de Madre family;
- one Swiss lawyer.

# OMAR EL MUKTAR FUND

## BALANCE SHEET AS AT 31 DECEMBER 1995

ASSETS		LIABILITIES	
	USD		USD
Securities.....	726,758	Initial capital.....	650,000
(market value : USD 1,060,748)			
Federal Tax Administration, Bern		<i>Receipts and expenditure account :</i>	
(withholding tax refund).....	3,272	Balance brought forward from 1994....	52,472
Banks.....	9,343	Attribution decided in 1995.....	(52,472)
		Excess of receipts over expenditure	
		in 1995.....	88,549
			88,549
		International Committee of the	
		Red Cross, current account.....	824
	<u>739,373</u>		<u>739,373</u>

## RECEIPTS AND EXPENDITURE ACCOUNT FOR 1995

EXPENDITURE		RECEIPTS	
	USD		USD
Bank and custody charges.....	5,971	Income from securities.....	43,394
Charges on purchase / sale of securities	4,182	Income from time deposits.....	3,999
Loss on sale of securities.....	13,487	Bank interest.....	240
Audit fees.....	824	Discount on purchase / profit on sale	
		of securities.....	54,893
		Net profit on exchange rates.....	10,487
	<u>24,464</u>		<u>113,013</u>

## RESULT

	USD
Excess of receipts over expenditure in 1995 for attribution.....	<u>88,549</u>

### ESTABLISHMENT

Pursuant to decision No. 5 of the Executive Board of 20 November 1980, adopted by the Committee in December 1980.

### OBJECT

A Fund in dollars, made up of one or several donations by the authorities of the Socialist People's Libyan Arab

Jamahiriya, the income of which is to be used to finance the ICRC's general assistance and protection activities .

### ADMINISTRATION

A Board composed of three ICRC representatives .



## PAUL REUTER FUND

### BALANCE SHEET AS AT 31 DECEMBER 1995

ASSETS	Sfr	LIABILITIES	Sfr	Sfr
Securities.....	225,900	Initial capital.....		200,000
(market value : Sfr 247,150)		<i>Receipts and expenditure account :</i>		
Federal Tax Administration, Bern		Balance brought forward from 1994....	27,670	
(withholding tax refund).....	3,689	Excess of receipts over expenditure		
Banks.....	40,338	in 1995.....	1,490	
				29,160
		<i>Reserve :</i>		
		Balance brought forward from 1994....		35,356
		International Committee of the		
		Red Cross, current account.....		5,411
	<u>269,927</u>			<u>269,927</u>

### RECEIPTS AND EXPENDITURE ACCOUNT FOR 1995

EXPENDITURE	Sfr	RECEIPTS	Sfr
Bank and custody charges.....	4,422	Income from securities.....	10,637
Audit fees.....	395	Bank interest.....	686
Other expenses.....	5,016		
	<u>9,833</u>		<u>11,323</u>

### RESULT

Excess of receipts over expenditure in 1995.....	Sfr <u>1,490</u>
--	---------------------

#### ESTABLISHMENT

Pursuant to decision No. 1 of the Executive Board of 6 January 1983 .

#### PURPOSE

The Fund's initial capital of Sfr 200,000 donated by Prof. Paul Reuter (his Balzan prize) may be augmented by gifts or bequest. The Fund's purpose is to :

- use the income to encourage and promote knowledge and dissemination of international humanitarian law;

- and to that effect award a prize every two years to reward work, assist in the implementation of a project or make a publication possible .

#### ADMINISTRATION

- A Committee composed of one member of the ICRC, who is its chairman, and two members of the ICRC staff, appointed by the Directorate ;
- and two persons from outside the ICRC who, with the Committee members, shall compose the Paul Reuter Prize jury.

## SPECIAL FUND FOR THE DISABLED

### BALANCE SHEET AS AT 31 DECEMBER 1995

ASSETS	Sfr	LIABILITIES	Sfr	Sfr
Securities.....	2,579,098	Initial capital.....	1,000,000	
(market value : Sfr 3,280,392)		<i>Receipts and expenditure account :</i>		
Federal Tax Administration, Bern		Balance brought forward from 1994....	1,436,056	
(withholding tax refund).....	10,371	Excess of expenditure over receipts		
Banks.....	136,057	in 1995.....	(164,552)	
				1,271,504
		<i>Total capital</i>		2,271,504
		Reserve funds (Cambodia project).....		200,000
		International Committee of the		
		Red Cross, current account.....		254,022
	<u>2,725,526</u>			<u>2,725,526</u>

### RECEIPTS AND EXPENDITURE ACCOUNT FOR 1995

EXPENDITURE	Sfr	RECEIPTS	Sfr
Expenditure for prosthetic / orthotic programmes		Contributions.....	2,247
- Training - Ethiopia	171,691	Income from securities.....	79,971
- Centre equipment - Nigeria	290	Income from time deposits.....	44,559
- Centre fees - Ho Chi Minh	79,992	Bank interest.....	242
Bank and custody charges.....	19,137	Discount on purchase of securities.....	14,910
Charges on purchase / sale of securities	6,168	Net profit on exchange rates.....	377
Premium on purchase / loss on sale of securities.....	25,285		
Audit fees.....	4,295		
	<u>306,858</u>		<u>142,306</u>

### RESULT

Excess of expenditure over receipts 1995.....	Sfr <u>(164,552)</u>
---	-------------------------

#### ESTABLISHMENT

Pursuant to the Assembly's decision No.2 of 19/20 October 1983.

#### OBJECT

- To help finance long-term projects for disabled persons, in particular the creation of workshops for the production of artificial limbs and orthotic appliances, and centres for rehabilitation and occupational retraining.
- To participate not only in ICRC and National Society projects, but also in those of other humanitarian bodies working in accordance with ICRC criteria.

#### ADMINISTRATION

A Committee composed of six ICRC staff members:

- one member of the ICRC, who shall act as chairman;
- the Chief Medical Officer ;
- one representative of the Department of Finance, Administration and Information Technology and one representative of the Department of Principles, Law and Relations with the Movement;
- the person in charge of programmes in aid of disabled persons at the Medical Division;
- one representative of the Operations Department appointed by the Director of Operations .



## RELIEF AND MEDICAL ASSISTANCE TABLES

The statistical data in the following tables can be summarized as follows:

### Relief and medical supplies dispatched by the ICRC in 1995:

All relief and medical goods received as contributions in kind or purchased by the ICRC and inventoried in the country of final destination between 1 January and 31 December 1995.

### Contributions in kind received and purchases made by the ICRC in 1995:

All relief and medical goods received as contributions in kind or purchased by the ICRC and inventoried in the country of final destination between 1 January and 31 December 1995. The figures for contributions in kind cover all material support received as a gift but do not include any services received, such as the provision of human resources and/or logistic means. The figures for medical and relief purchases comprise all procurements carried out both with unearmarked and with earmarked financial contributions ("cash for kind"). The grand total of Sfr 177,348,211 therefore corresponds to the grand total given in the table "Relief and medical supplies dispatched by the ICRC in 1995".

### ICRC relief and medical distributions in 1995:

All relief and medical goods distributed by the ICRC in the field between 1 January and 31 December 1995. These goods were either purchased or received in kind during 1995 or taken from stocks already constituted at the end of 1994.

# RELIEF SUPPLIES DISPATCHED BY THE ICRC IN 1995

(by receiving countries, according to stock entry date)

COUNTRIES	GIFTS IN KIND			PURCHASES BY THE ICRC			TOTAL DISPATCHED			
	MEDICAL (Sfr)	RELIEF (Sfr)	(Tonnes)	MEDICAL (Sfr)	RELIEF (Sfr)	(Tonnes)	MEDICAL (Sfr)	RELIEF (Sfr)	(Tonnes)	TOTAL (Sfr)
<b>AFRICA</b>	<b>521,953</b>	<b>21,316,130</b>	<b>29,378.5</b>	<b>11,553,229</b>	<b>28,743,260</b>	<b>31,644.6</b>	<b>12,075,182</b>	<b>50,059,390</b>	<b>61,023.1</b>	<b>62,134,572</b>
Angola	154,286	6,750,825	9,334.9	1,418,103	4,328,809	5,467.9	1,572,389	11,079,634	14,802.8	12,652,023
Burundi		1,345,757	594.2	431,447	960,408	297.1	431,447	2,306,165	891.3	2,737,612
Cape Verde				3,344			3,344			3,344
Chad				42,767	44,084	62.8	42,767	44,084	62.8	86,851
Ethiopia				285,985	115,668	26.1	285,985	115,668	26.1	401,653
Ghana				5,249	106,228	24.0	5,249	106,228	24.0	111,477
Gambia					5,002	0.6		5,002	0.6	5,002
Guinea				2,130			2,130			2,130
Côte d'Ivoire				15,687			15,687			15,687
Kenya				46,140	3,874	11.1	46,140	3,874	11.1	50,014
Liberia	3,600			130,663			134,263			134,263
Madagascar		29,000	50.0	157	6,494	10.2	157	35,494	60.2	35,651
Malawi				136,252	28,585	8.9	136,252	28,585	8.9	164,837
Mali		51,034	5.1	12,899	290,731	119.4	12,899	341,765	124.5	354,664
Mozambique				203,421			203,421			203,421
Niger					12,418	2.0		12,418	2.0	12,418
Rwanda		12,530,180	19,249.7	4,614,275	10,393,935	10,192.2	4,614,275	22,924,115	29,441.9	27,538,390
Senegal					16,839	31.0		16,839	31.0	16,839
Sierra Leone				11,657	116,370	69.5	11,657	116,370	69.5	128,027
Somalia	191,434			1,469,775	4,285,097	3,822.9	1,661,209	4,285,097	3,822.9	5,946,306
South Africa					226,016	185.2		226,016	185.2	226,016
Sudan	172,633	183,807	76.2	2,465,569	1,656,343	1,434.2	2,638,202	1,840,150	1,510.4	4,478,352
Tanzania				10,936			10,936			10,936
Uganda		840	0.1	13,525	8,729	7.7	13,525	9,569	7.8	23,094
Zaire		49,610	8.0	223,523	895,754	1,102.9	223,523	945,364	1,110.9	1,168,887
Zimbabwe				9,725	9,492	0.6	9,725	9,492	0.6	19,217
Regional stock in Kenya		375,077	60.3		5,232,384	8,768.3		5,607,461	8,828.6	5,607,461
<b>THE AMERICAS</b>		<b>81,648</b>	<b>13.6</b>	<b>276,718</b>	<b>570,918</b>	<b>627.6</b>	<b>276,718</b>	<b>652,566</b>	<b>641.2</b>	<b>929,284</b>
Colombia				46,598	23,619	15.8	46,598	23,619	15.8	70,217
Equador				24,076			24,076			24,076
Haiti				97,287	59,795	39.8	97,287	59,795	39.8	157,082
Mexico		81,648	13.6	4,486	381,046	532.7	4,486	462,694	546.3	467,180
Peru				104,271	106,458	39.3	104,271	106,458	39.3	210,729
<b>ASIA &amp; THE PACIFIC</b>	<b>18,060</b>	<b>1,223,558</b>	<b>5,312.8</b>	<b>4,369,002</b>	<b>6,352,423</b>	<b>9,160.5</b>	<b>4,387,062</b>	<b>7,575,981</b>	<b>14,473.3</b>	<b>11,963,043</b>
Afghanistan		1,223,558	5,312.8	2,956,338	5,311,552	8,498.2	2,956,338	6,535,110	13,811.0	9,491,448
Cambodia				662,936	54,519	27.2	662,936	54,519	27.2	717,455
Indonesia	18,060			73,777	21,960	7.0	91,837	21,960	7.0	113,797
Myanmar				30,276			30,276			30,276
Pakistan (conflict in Afghanistan)				287,416	90,444	91.9	287,416	90,444	91.9	377,860
Philippines				2,168	34,005	22.6	2,168	34,005	22.6	36,173
Sri Lanka				324,587	839,943	513.6	324,587	839,943	513.6	1,164,530
Vietnam				31,504			31,504			31,504
<b>WESTERN &amp; CENTRAL EUROPE</b>	<b>5,928,617</b>	<b>11,698,931</b>	<b>4,905.4</b>	<b>20,345,827</b>	<b>19,199,102</b>	<b>11,130.0</b>	<b>26,274,444</b>	<b>30,898,033</b>	<b>16,035.4</b>	<b>57,172,477</b>
Former Yugoslavia	5,928,617	11,698,931	4,905.4	20,345,827	19,199,102	11,130.0	26,274,444	30,898,033	16,035.4	57,172,477
<b>EASTERN EUROPE &amp; CENTRAL ASIA</b>	<b>301,022</b>	<b>14,643,885</b>	<b>5,017.5</b>	<b>4,069,507</b>	<b>19,276,054</b>	<b>10,886.5</b>	<b>4,370,529</b>	<b>33,919,939</b>	<b>15,904.0</b>	<b>38,290,468</b>
Armenia				109,780	1,169,818	792.0	109,780	1,169,818	792.0	1,279,598
Azerbaijan				321,971	15,208	7.1	321,971	15,208	7.1	337,179
Georgia				498,617	2,242,259	1,469.4	498,617	2,242,259	1,469.4	2,740,876
Russian Federation	301,022	10,822,837	3,409.1	2,558,331	11,703,138	6,556.1	2,859,353	22,525,975	9,965.2	25,385,328
Tajikistan		17,490	35.9	39,327	340,719	215.6	39,327	358,209	251.5	397,536
Emergency stock "Caucasus"		3,803,558	1,572.5	541,481	3,804,912	1,846.3	541,481	7,608,470	3,418.8	8,149,951
<b>MIDDLE EAST &amp; NORTH AFRICA</b>	<b>133,996</b>			<b>5,297,328</b>	<b>914,397</b>	<b>306.2</b>	<b>5,431,324</b>	<b>914,397</b>	<b>306.2</b>	<b>6,345,721</b>
Algeria				1,469			1,469			1,469
Iraq	133,996			4,857,395	24,668	3.9	4,991,391	24,668	3.9	5,016,059
Israel, the occ. terr. & the autonomous terr.				39,287	789,751	241.8	39,287	789,751	241.8	829,038
Lebanon				345,826	55,964	35.8	345,826	55,964	35.8	401,790
Yemen				53,351	44,014	24.7	53,351	44,014	24.7	97,365
<b>EMERGENCY STOCKS W. EUROPE</b>					<b>512,646</b>	<b>113.4</b>		<b>512,646</b>	<b>113.4</b>	<b>512,646</b>
Stocks in Brussels and Geneva					512,646	113.4		512,646	113.4	512,646
<b>GRAND TOTAL</b>	<b>6,903,648</b>	<b>48,964,152</b>	<b>44,627.8</b>	<b>45,911,611</b>	<b>75,568,800</b>	<b>63,868.8</b>	<b>52,815,259</b>	<b>124,532,952</b>	<b>108,496.6</b>	<b>177,348,211</b>



# CONTRIBUTIONS IN KIND RECEIVED AND PURCHASES MADE BY THE ICRC IN 1995

(divided by donors & purchases, according to stock entry date)

DONORS	FOOD (Tonnes)	SEEDS (Tonnes)	BLANKETS (Units)	TENTS (Units)	KITCHEN SETS (Units)	CLOTHES (Tonnes)	OTH.RELIEF GOODS (Tonnes)	TOTAL RELIEF (Sfr)	MEDICAL (Sfr)	GRAND TOTAL (Sfr)
<b>NATIONAL SOCIETIES</b>	<b>5,059.6</b>	<b>342.6</b>	<b>560,395</b>	<b>2,727</b>	<b>500</b>	<b>413.6</b>	<b>1,372.0</b>	<b>23,224,605</b>	<b>6,696,478</b>	<b>29,921,083</b>
Austria	1,079.8	342.6	100,000	200		10.2	347.3	3,917,628	1,370,977	5,288,605
Belgium	138.6		58,500				7.1	676,275		676,275
Canada			20,000			29.3	11.5	669,080		669,080
Denmark	129.5		60,640	200		21.9	7.0	1,156,771	634,120	1,790,891
Finland			10,000					234,915	18,060	252,975
Germany (1)	577.1		48,175	1,816		161.1	536.3	5,999,384	323,700	6,323,084
Hungary									29,872	29,872
Italy									161,601	161,601
Netherlands (1)	1,514.3		115,010			3.6	70.1	3,104,559	88,200	3,192,759
Norway	352.0		25,000				133.4	1,937,031	3,405,099	5,342,130
Poland			23,570	25			51.4	119,720		119,720
Portugal					500			13,315		13,315
Seychelles	30.6							61,200		61,200
Spain			30,000				36.0	460,961		460,961
Sweden			24,510			154.9	6.0	1,220,542	18,380	1,238,922
Switzerland	53.3		44,990			31.0	165.8	1,689,098	646,469	2,335,567
United Kingdom (1)	1,148.5			486		1.6		1,945,796		1,945,796
Int. Federation of RC & RC Societies	35.9							17,490		17,490
Others (2)							0.1	840		840
<b>GOVERNMENTS</b>	<b>27,307.3</b>	<b>0.0</b>	<b>376,480</b>	<b>801</b>	<b>400</b>	<b>6.8</b>	<b>538.3</b>	<b>22,091,974</b>	<b>61,970</b>	<b>22,153,944</b>
Austria	622.0						11.7	730,854		730,854
Belgium	1,560.0							703,304		703,304
Canada	1,067.7			1				1,106,354		1,106,354
Denmark			82,000	300			133.7	1,187,819		1,187,819
Germany	330.0		40,020			3.5	61.3	1,288,154		1,288,154
Finland			30,010				278.4	1,301,725		1,301,725
France	17.5		4,200		200	3.3		73,708	61,970	135,678
Norway			35,000					214,938		214,938
Spain			53,300	100	200		1.0	506,719		506,719
Sweden			20,010				42.3	248,474		248,474
Switzerland	60.0							150,207		150,207
United Kingdom	399.0		40,020	400			9.9	1,146,797		1,146,797
United States	23,251.1		71,920					13,432,921		13,432,921
<b>VARIOUS DONORS</b>	<b>7,326.1</b>	<b>538.0</b>	<b>25,530</b>	<b>10</b>	<b>0</b>	<b>0.7</b>	<b>90.9</b>	<b>3,647,573</b>	<b>145,200</b>	<b>3,792,773</b>
European Union	1,869.8	528.0					15.0	1,598,559		1,598,559
United Nations (WFP & UNICEF)	5,312.8	10.0						1,231,558		1,231,558
Other donors	143.5		25,530	10		0.7	75.9	817,456	145,200	962,656
<b>TOTAL GIFTS IN KIND</b>	<b>39,693.0</b>	<b>880.6</b>	<b>962,405</b>	<b>3,538</b>	<b>900</b>	<b>421.1</b>	<b>2,001.2</b>	<b>48,964,152</b>	<b>6,903,648</b>	<b>55,867,800</b>
ICRC PURCHASES (non-earmarked)	17,453.7	1,690.8	290,930	631	2,360	94.2	2,727.2	23,335,729	42,747,787	66,083,516
ICRC PURCHASES (cash for kind)	29,969.6	5,506.0	507,210	442	36,750	46.8	4,941.4	52,233,071	3,163,824	55,396,895
<b>TOTAL ICRC PURCHASES</b>	<b>47,423.3</b>	<b>7,196.8</b>	<b>798,140</b>	<b>1,073</b>	<b>39,110</b>	<b>141.0</b>	<b>7,668.6</b>	<b>75,568,800</b>	<b>45,911,611</b>	<b>121,480,411</b>
<b>GRAND TOTAL</b>	<b>87,116.3</b>	<b>8,077.4</b>	<b>1,760,545</b>	<b>4,611</b>	<b>40,010</b>	<b>562.1</b>	<b>9,669.8</b>	<b>124,532,952</b>	<b>52,815,259</b>	<b>177,348,211</b>

(1) Partly financed by the European Union (Sfr 3,870,040.-)

(2) Goods from stocks of local National Societies, original donors not determined.

# RELIEF SUPPLIES DISTRIBUTED BY THE ICRC IN 1995

C O U N T R I E S	M E D I C A L (Sfr)	R E L I E F		T O T A L (Sfr)
		(Sfr)	(Tonnes)	
<b>AFRICA</b>	<b>12,281,946</b>	<b>62,300,722</b>	<b>76,668.6</b>	<b>74,582,668</b>
Angola	1,512,880	16,897,802	20,754.2	18,410,682
Burundi	415,557	2,340,774	911.3	2,756,331
Chad	42,767	44,301	62.8	87,068
Cape Verde	3,344			3,344
Côte d'Ivoire	752	41,149	9.8	41,901
Ethiopia	417,080	167,055	32.8	584,135
Gambia		5,002	0.6	5,002
Ghana	6,899	106,228	24.0	113,127
Guinea	2,130			2,130
Kenya	46,140	18,427	17.8	64,567
Liberia	118,071	512,398	104.3	630,469
Madagascar	157	35,494	60.2	35,651
Malawi	128,253	28,519	9.0	156,772
Mali	9,682	222,035	98.4	231,717
Mozambique	203,421			203,421
Niger	1,926	12,418	2.0	14,344
Rwanda	4,840,171	32,254,386	47,249.5	37,094,557
Senegal		16,839	31.0	16,839
Sierra Leone	14,332	73,366	16.1	87,698
Somalia	1,652,613	5,351,071	4,078.9	7,003,684
South Africa		270,814	179.4	270,814
Sudan	2,614,365	2,245,870	1,459.3	4,860,235
Tanzania	10,936	16,248	0.6	27,184
Uganda	19,851	42,766	17.8	62,617
Zaire	210,894	1,576,222	1,547.3	1,787,116
Zimbabwe	9,725	21,538	1.5	31,263
<b>THE AMERICAS</b>	<b>275,012</b>	<b>766,368</b>	<b>656.6</b>	<b>1,041,380</b>
Colombia	46,598	23,619	15.8	70,217
Ecuador	24,076			24,076
Haiti	91,227	59,795	39.9	151,022
Mexico	4,486	462,694	546.3	467,180
Peru	108,625	220,260	54.6	328,885
<b>ASIA &amp; THE PACIFIC</b>	<b>4,339,365</b>	<b>6,783,668</b>	<b>12,759.7</b>	<b>11,123,033</b>
Afghanistan	2,937,767	6,391,248	12,362.9	9,329,015
Cambodia	662,936	54,519	27.2	717,455
Indonesia	91,837	21,960	6.9	113,797
Myanmar	30,276			30,276
Pakistan (conflict in Afghanistan)	287,416	90,444	91.9	377,860
Philippines	2,168	34,005	22.7	36,173
Sri Lanka	295,461	191,492	248.1	486,953
Vietnam	31,504			31,504
<b>WESTERN &amp; CENTRAL EUROPE</b>	<b>26,108,938</b>	<b>19,820,869</b>	<b>11,770.8</b>	<b>45,929,807</b>
Former Yugoslavia	26,108,938	19,820,869	11,770.8	45,929,807
<b>EASTERN EUROPE &amp; CENTRAL ASIA</b>	<b>3,404,563</b>	<b>27,182,854</b>	<b>12,873.3</b>	<b>30,587,417</b>
Armenia	72,721	2,788,999	1,587.2	2,861,720
Azerbaijan	286,728	2,578,710	1,035.4	2,865,438
Georgia	419,254	4,208,590	2,036.9	4,627,844
Russian Federation	2,580,979	17,340,790	8,025.9	19,921,769
Tajikistan	44,881	265,765	187.9	310,646
<b>MIDDLE EAST &amp; NORTH AFRICA</b>	<b>5,467,170</b>	<b>1,783,287</b>	<b>498.8</b>	<b>7,250,457</b>
Algeria	1,469			1,469
Iraq	4,917,680	803,799	181.0	5,721,479
Israel, the occupied terr. & the autonomous territories	39,287	808,591	243.0	847,878
Lebanon	351,265	79,754	44.1	431,019
Yemen	157,469	91,143	30.7	248,612
<b>GRAND TOTAL</b>	<b>51,876,994</b>	<b>118,637,768</b>	<b>115,227.8</b>	<b>170,514,762</b>